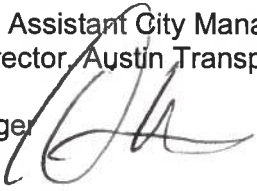




## MEMORANDUM

**TO:** Mayor and Council

**CC:** Robert D. Goode, P.E., Assistant City Manager  
Robert Spillar, P.E., Director, Austin Transportation Department

**FROM:** Marc A. Ott, City Manager 

**DATE:** June 23, 2014

**SUBJECT:** 2014 Austin Strategic Mobility Plan

---

I am pleased to formally present you with the enclosed copy of the 2014 Austin Strategic Mobility Plan which contains Staff recommendations on Projects of Regional Significance, including both highway related projects and the Project Connect Central Locally Preferred Alternative (LPA) for an urban rail system.

This plan reinforces the importance of working with our regional partners to construct significant infrastructure capacity investments in both roadways and high capacity transit options that focus on moving people and goods efficiently. In addition to leveraging the City's investments for projects with our regional partners, this plan builds on previous mobility investments, especially those contained in the 2010 and 2012 strategic mobility bond proposals.

Staff has proposed Council adoption of the 2014 Strategic Mobility Plan at your June 26<sup>th</sup> Council Meeting. Adoption of the plan would not only endorse a range of multi-modal projects that address regional congestion and safety issues, but also would adopt an Urban Rail LPA, a necessary step in advancing our Region's aspirations to expand transit services throughout our community.

Staff is prepared to discuss the plan and answer your questions as we approach the June 26<sup>th</sup> action item on your regular meeting agenda.





# 2014 AUSTIN STRATEGIC MOBILITY PLAN

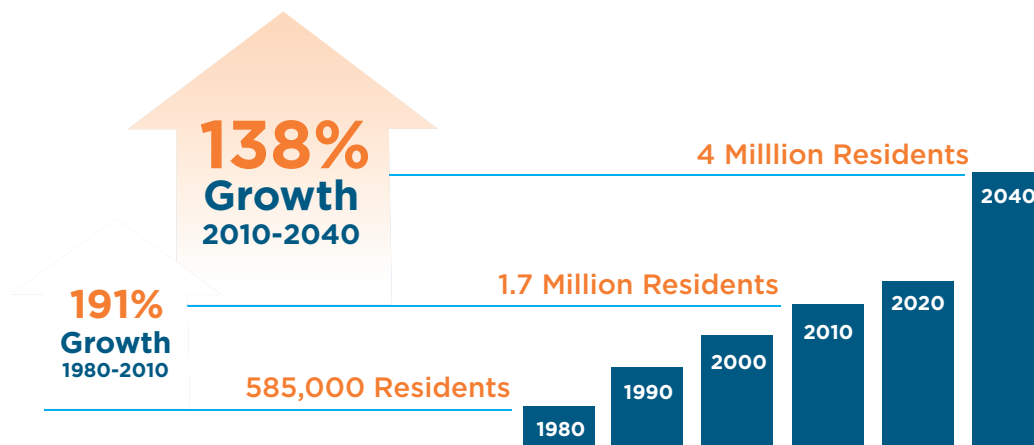


# THE GROWING NEED FOR TRANSPORTATION SOLUTIONS

The City of Austin is attracting new private sector investments, adding jobs and welcoming thousands of new residents. Austin has been consistently ranked in national publications as a top performing city for attracting jobs. The City of Austin demographer estimates that on average, 110 people are moving to Austin each day, supporting a trend of long-term, sustained, rapid population growth. In fact, Austin has led the top 30 US Metro areas in population growth from 2010-2011, and has been consistently one of the top 10 fastest growing metropolitan communities for the last decade, according to U.S. Census data.

## Austin Regional Population Growth:

US Census Data



This growth brings many benefits, but also presents challenges. As the 11th largest city in the U.S., Austin is experiencing significant travel congestion issues that will only increase as the region continues its rapid expansion. More people, going to more jobs, equals more cars on the road. This economic expansion has created traffic congestion throughout the city. Even with a renewed sense of urgency and regional cooperation, Central Texas is still growing too fast for our transportation system to keep up. Traffic grew more than 30 percent faster than the growth in road capacity in the Austin metro area over the past 25 years, according to a 2009 Texas Transportation Institute report.

## Austin Metropolitan Growth Impact on Travel - 1980-2010:

TTI Travel Data



Consequently, Austin is also known as the 4th most congested metropolitan area in the United States, according to Inrix, a national transportation research firm in its 2014 Traffic Scorecard. The congestion measure is based on the average commuter travel time during peak periods, as compared to free-flow conditions.

## REGIONAL/LOCAL PLANNING

How will we manage this challenge? The region has developed long term plans to accommodate growth in a way that mitigates the mobility challenges noted above. For example, the Capital Area Metropolitan Planning Organization (CAMPO) identified areas of “preferred growth” known as activity centers with a proposed transportation system to serve these centers. In support of that effort, the City of Austin, through its comprehensive plan “Imagine Austin,” set the framework for a “Compact and Connected” approach to promote development in compact centers, communities, and along corridors that are connected by roads and transit with interconnected development patterns and density to support public transit and a variety of transportation choices.

Our region will continue to grow. With these plans, and the associated transportation networks to support the plans, Austin is striving to manage its growth in a sustainable fashion. Our transportation investments must be designed to support Imagine Austin’s “Compact and Connected” vision. Solutions to mobility require a multi-modal system that works seamlessly to provide transportation options, address congestion, and increase mobility throughout the community while supporting and enhancing economic development opportunities within the established “centers.”

## ADDRESSING OUR TRANSPORTATION CHALLENGES WITH INFRASTRUCTURE

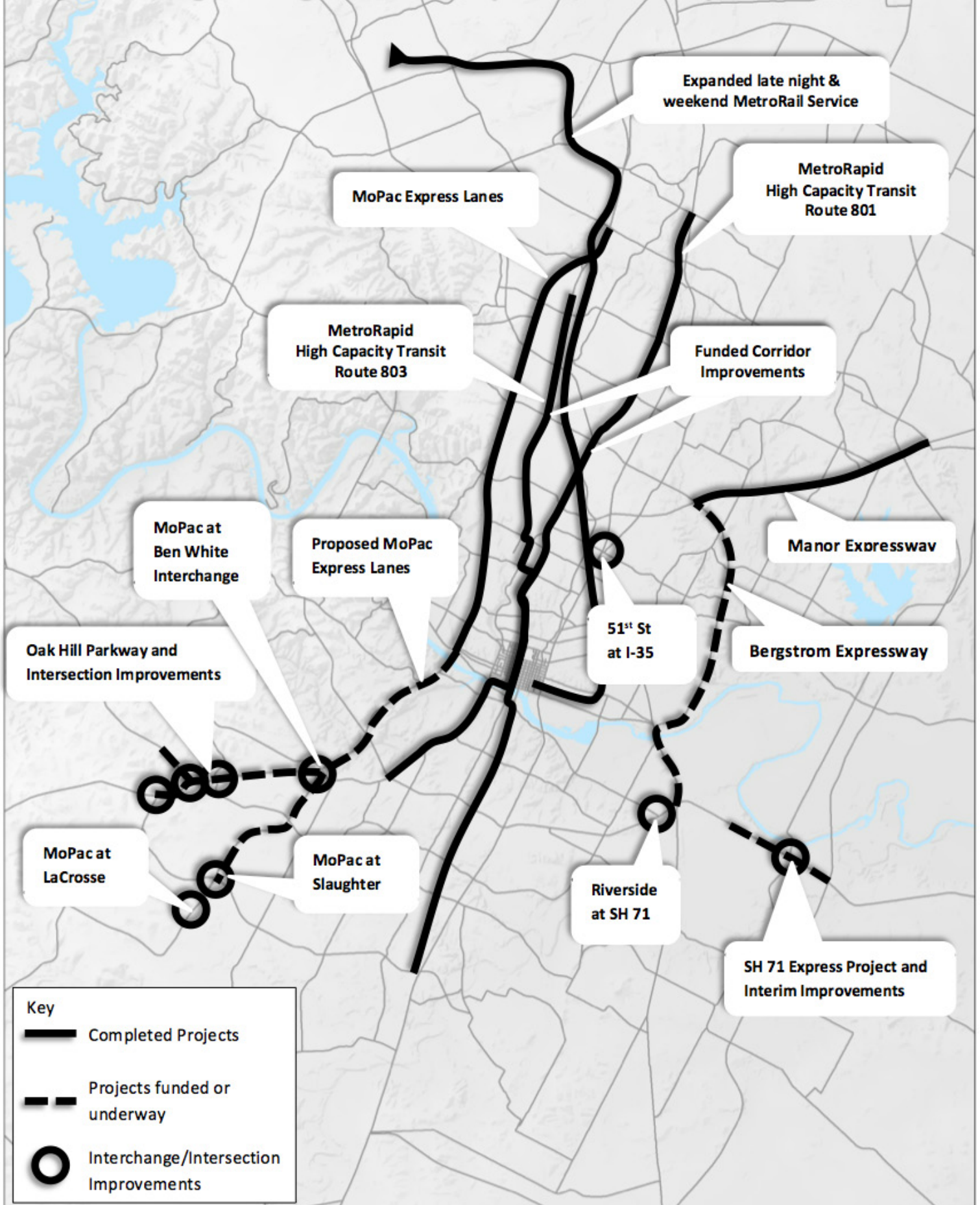
The region’s transportation providers have invested in transportation projects aimed to improve our mobility system. In fact, approximately \$5 billion has been spent on roadways within our region since 2000. A few of the more recent infrastructure projects that have been completed, or are underway, include:

- I-35/51st Street Interchange (Funded: City of Austin)
- MoPac/Ben White Interchange (Funded: City of Austin & TxDOT )
- Oak Hill Y Intersection Improvements (Funded: City of Austin, Travis County, TxDOT, CTRMA)
- MoPac Express Lanes (Funded: CTRMA/Regional Infra Bank)
- MoPac at Slaughter and LaCross Interchanges (Funded: TxDOT)
- US 290 Manor Expressway (Funded: CTRMA)
- US 183 Freeway/Bergstrom Expressway (Funded: CTRMA and TxDOT)
- Oak Hill Parkway (Funded: CTRMA)
- MetroRapid Bus Rapid Transit - BRT Route 801 (Funded: Capital Metro, City of Austin, Federal Transit Administration FTA)
- MetroRapid BRT Route 803 (Funded: Capital Metro, FTA)
- Expanded MetroRail Late Night and Weekend Service (Funded: City of Austin)
- SH 71 Express (Funded: TxDOT)
- SH 71/FM 973 Interim Improvements (Funded: TxDOT, City of Austin, Travis County)

Even with these investments, the mobility challenges continue to increase. Per Council’s direction, staff has developed a Mobility Plan that proposes building on past investments.



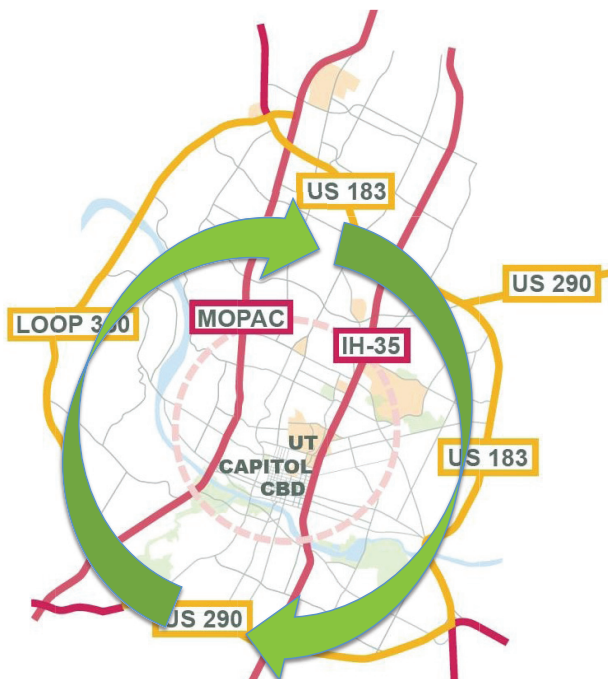
# Projects of Regional Significance completed, underway, or funded



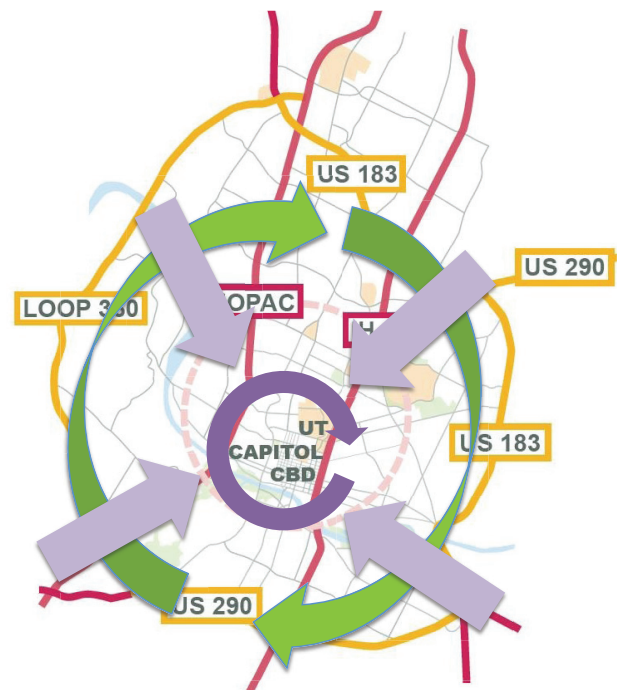
## AUSTIN STRATEGIC MOBILITY PLAN 2014

There is no one answer or “magic bullet” to solve the region's mobility issues - we must work together to improve mobility with a variety of solutions. In order to sustain Austin's vitality with ground transportation access and options, the City is implementing strategies to simultaneously invest in projects, such as completing the highway network that enhance **vehicle moving** capacity *around the region's core*, allows through trips to bypass the core, and by focusing on **moving people into and out of the congested regional core** on efficient roadways and transit.

Simultaneously invest in projects that enhance **vehicle moving** capacity *around the region's central core*, allowing through-trips to bypass the core.



Invest in projects and policies that increase **people moving** capacity *into the central core*, primarily focused on commuter trips, by maximizing traveler choice.



### Austin Strategic Mobility Plan (ASMP) Guiding Principles

The City of Austin seeks to add new capacity to the transportation network in all modes to alleviate some of the symptoms of growth, and pair it with better information systems to allow residents to make informed decisions about how and when they travel. The ASMP 2014 brings forward projects of regional significance that seek shared solutions and build on previous strategic mobility plans.



## Seeking Shared Solutions

Community ground transportation - the movement of people, goods, and services along local collector streets, arterials, highways, freeways, tollways, express lanes, and dedicated transit ways - must fully embrace an integrated, multi-modal system in order to meet the needs of a growing, highly urbanized region. Interdependent modes of transit are necessary to efficiently move people, goods, and services within the community. For example, a commuter may get in a personal vehicle to drive from his or her home to a park-and-ride facility, board a train or commuter bus to travel into the downtown core, and then walk a few blocks to work. This commuter does not view this as several independent/discrete trips, but as one trip from his/her home to work. Without an integrated, balanced transportation network that provides transportation choices, our mobility challenges will become unmanageable. Roads, rail, trails, bus, bike, and pedestrian modes must all be present and work together within the broader "community ground transportation" system to facilitate the region's growth. Therefore, we must reinforce partnerships to construct regionally significant infrastructure capacity investments in both **roadways** and **high capacity transit** options that focus on moving people and goods efficiently, leveraging Austin's investments.

### Building on previous mobility investments

- 2010 Strategic Mobility emphasized arterial efficiency with signal investment, bikes/pedestrian network expansion, and funded I-35 Corridor Development Program.
- 2012 Strategic Mobility Proposal added limited new roadway capacity, including investments on I-35 and to the Guadalupe/Lavaca BRT corridor and funded arterial corridor programs.
- Regional partnership funding with TxDOT, Capital Metro, Counties, Central Texas Regional Mobility Authority, etc.

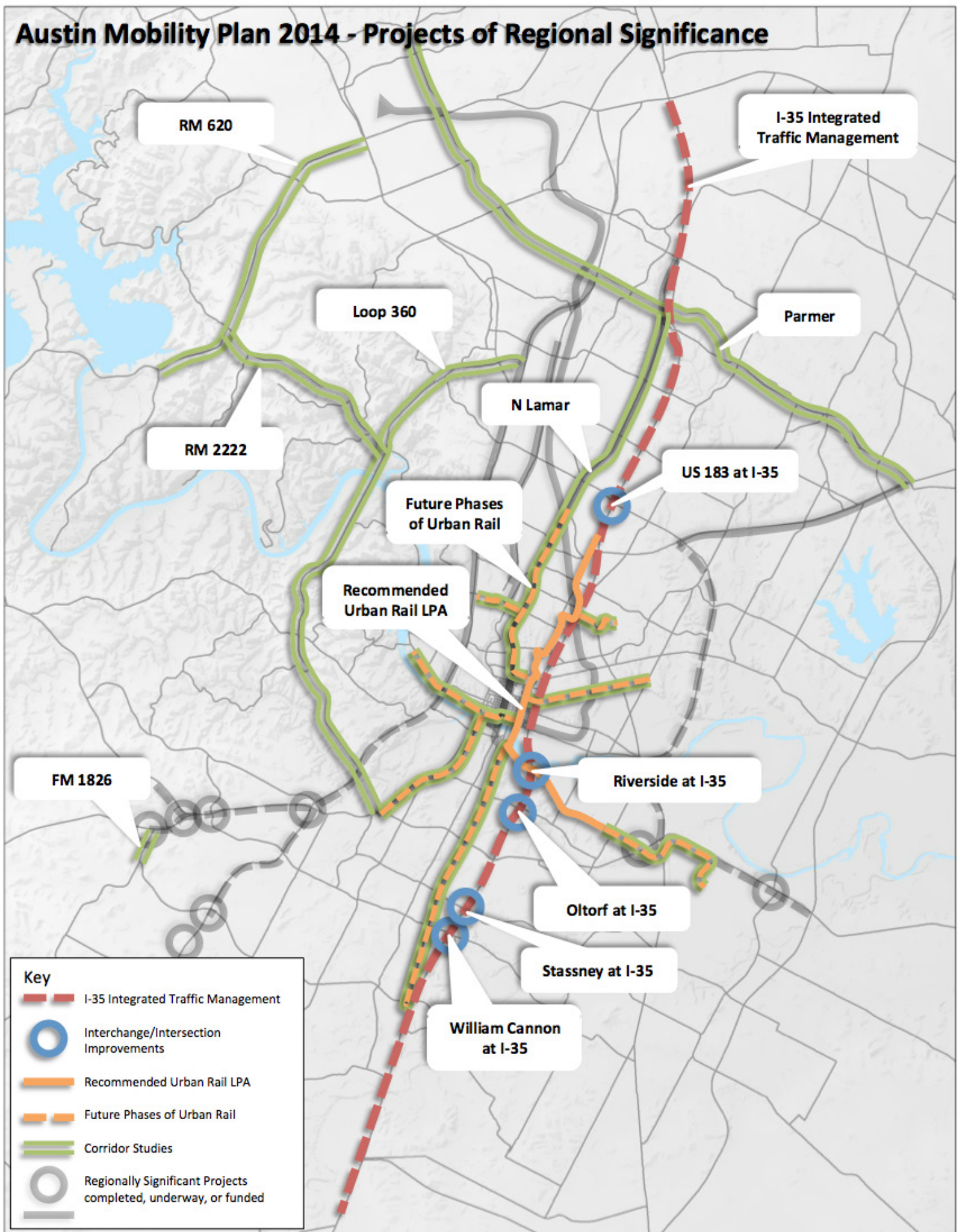
## PROJECTS OF REGIONAL SIGNIFICANCE

The Austin City Council is currently considering mobility projects of regional significance that might be incorporated into a proposed mobility bond for November 2014. The City Council directed staff in December 2013 to present to Council a Locally Preferred Alternative for High Capacity Transit serving the Austin Core Activity Center for consideration in the Spring/Summer 2014. Subsequently, Council directed staff to propose potential road and highway improvements, that are consistent with the values set forth by the City Council in the Imagine Austin Plan. The following package of High Capacity Transit Urban Rail and Roadways of Regional Significance are recommended by staff for funding consideration.

### Funding

Costs to construct the projects of regional significance noted above assume full funding from the City of Austin. That being said, as the partnership with TxDOT continues to develop, some of the local funding could very well be offset by other sources allowing more projects to be completed. City staff will continue future funding discussions with TxDOT and our other regional transportation partners.

# Austin Mobility Plan 2014 - Projects of Regional Significance





## Mobility 35: Capital Area Corridor



The I-35 corridor through central Austin ranks in the top 25 worst congested corridors in the nation, according to Inrix. The portion of I-35 through downtown Austin, which carries more than 200,000 vehicles a day, was ranked as the most congested roadway in Texas in 2013 by the Texas Transportation Institute (TTI).

The City of Austin has been focused on delivering near-term strategies to improve I-35 through Austin that offer to move more people and freight into and out of our region. Toward this end, Austin Transportation has represented the City of Austin since 2010 in working with the Texas Department of Transportation (TxDOT) on Mobility 35. This is a comprehensive TxDOT effort to select the best strategies to improve I-35 statewide. Mobility 35 includes multiple roadway segments in Travis, Hays and Williamson Counties; together they make up the "Capital Area Improvement Corridor." I-35 Capital Area Improvement Program (CAIP) is a partnership of the City of Austin and TxDOT. To improve travel conditions throughout the Central Austin Region.

### I-35 CAIP Goals:

- Increase capacity
- Better manage traffic
- Enhance safety
- Optimize existing facility
- Minimize additional right-of-way needs
- Improve east-west connectivity
- Improve compatibility with neighborhoods
- Enhance bicycle, pedestrian and transit options

### Local Trips on I-35

Since 1962, Interstate Highway 35 has been the transportation backbone of the region, connecting central Texas to the rest of the U.S., Mexico and Canada. Today I-35 is congested with three different kinds of trips: long-distance/freight, commuter, and local. The corridor (and its central Austin segment) is routinely ranked as one of the most congested roadways in the region and Texas. Yet 85% of trips within the Austin region are local to the 5-county area - 2013 TTI report.

**85%** of trips using I-35 within the Austin region are local to the Travis, Hays, Williamson, Bastrop and Caldwell area

SH 45N to SH 45SE

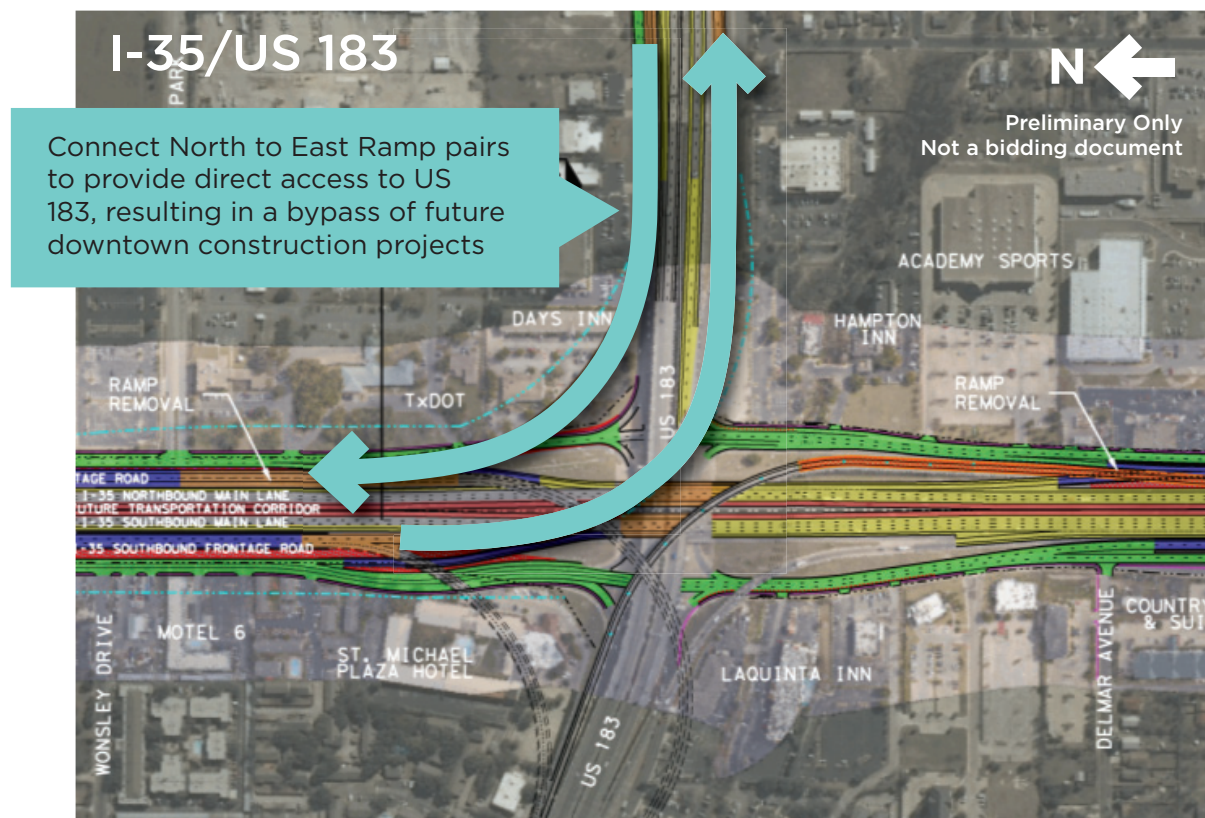


## Leveraging Funds – the Next Investment

Austinites approved \$3.4 million in 2010 and \$15.6 million 2012 bonds to directly address I-35 via corridor development, preliminary engineering, design and construction. Following the City's initial contribution in 2010, regional partners have invested a total of \$61M (\$46M from the State) to advance the I-35 program. This leveraging represents an approximate 17 to 1 return on the City's initial 2010 investment of \$3.4 million.

The I-35 Corridor Implementation Plan going forward identifies keystone projects that must be accomplished first in order to make room to add additional lanes and possible express transit, and to enable Downtown reconstruction. Each of these keystone projects are beneficial as stand alone projects, even if future added capacity via the Future Transit Corridor on the I-35 main lines is not constructed. They each reduce traffic independently, but as a system provide even greater benefits. Local investment in these keystone projects would be expected to attract state and regional funding partners to make complimentary investments. Keystone projects for interchanges and access roadways along I-35 include:

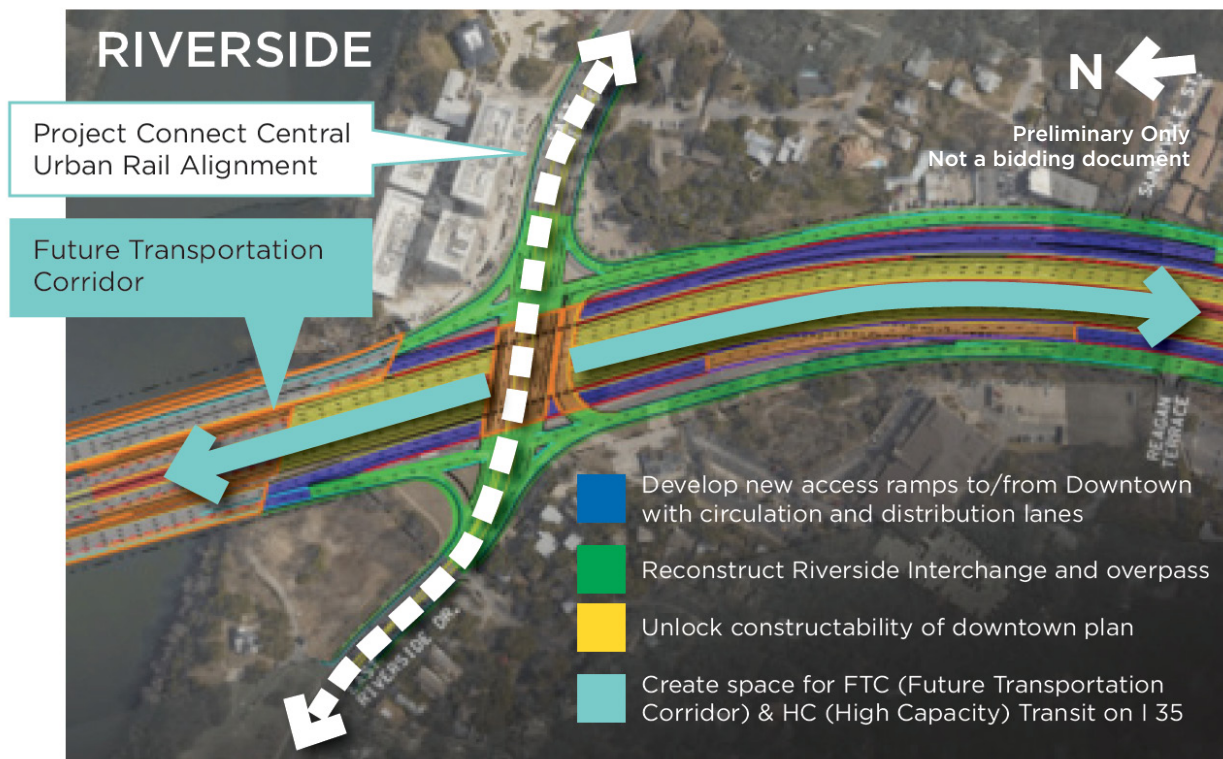
- **US 183 Fully-Directional Interchange Completion:** This project would connect the north to east ramp pairs, providing direct access between North I-35 and US 183. The resulting project would allow trips traveling to/from Williamson and North Travis County to easily access the US 183 corridor, which is currently funded for reconstruction to provide full access controlled freeway travel corridor between I-35 north and SH 71 on the south. Completion of this interchange would open a viable bypass route of Downtown Austin for trips traveling through the Central Austin Region. A bypass route to central Downtown Austin, allowing through-trips to avoid delays, is critical if future reconstruction of I-35 in Downtown is to be realized. The estimated cost for this project is approximately \$120 million. However, because this project ultimately feeds the funded US 183 project soon to be under construction, it is a strong candidate for alternative funding options (e.g., state or regional funding).





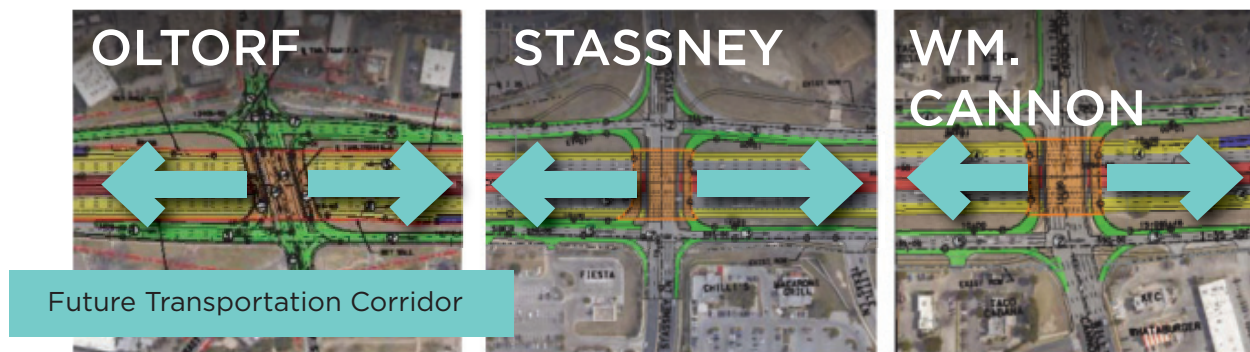
- **Downtown Access Roadway & Riverside Interchange:** This project would develop new and improved access ramps to/from Downtown Austin with circulation and distribution lanes. The addition of these new access lanes requires the reconstruction of the Riverside Interchange Overpass to make room for future new capacity construction within the existing footprint of I-35. The project unlocks the constructability of the proposed I-35 project in Downtown Austin, consistent with the Austin Downtown Plan. This project would also provide a pathway across I-35 for the proposed High Capacity Transit Urban Rail Locally Preferred Alternative (LPA), which must traverse this interchange to serve the Riverside Corridor. The estimated cost for this project is \$120 million and includes:

- Construct new access ramps to/from Downtown Austin with circulation and distribution lanes to separate local access traffic destined to downtown from traffic passing through downtown and headed to points north of the central Austin activity center
- Reconstruct the Riverside Interchange Overpass to accommodate I-35 ramping and provide structural capacity and room to convey Urban Rail into the Riverside Corridor
- Unlock constructability of planned Downtown Austin I-35 improvements by providing local construction bypass and improved access to Downtown ramps
- Create space for I-35 FTC (Future Transportation Corridor) and potential HCT (High Capacity Transit) on I-35 – the FTC would consist of new main lane capacity, one lane in each direction, that could provide a platform for future HCT up and down the I-35 corridor serving southern Travis and Hays Counties



- ***Oltorf, Stassney, and William Cannon Overpass and Interchange Replacements:*** These projects would reconstruct the frontage road access and intersections at each of these critical arterials, replacing the existing arterial overpasses, adding U-turn structures, widening the clearance for and relocating the I-35 main-lanes, and making other safety improvements. These projects would provide improved non-vehicular access across the freeway as well as make room for the FTC (Future Transportation Corridor) that is planned to add additional capacity within the existing I-35 footprint. The FTC would provide a platform for future High Capacity Transit (HCT) that could serve southern Travis and Hays Counties. The estimated cost of construction for these interchange replacements combined is approximately \$90 million. These projects offer opportunities to partner with TxDOT and other regional transportation agencies to realize their construction.

Each of these I-35 projects individually will reduce congestion, but the sum of the projects provides a greater anticipated benefit. These projects also create space for the Future Transportation Corridor (FTC) that is planned to add additional capacity on the main lanes of I-35.



Preliminary Only - Not a bidding document

- ***Regional Transportation Management and I-35 Integrated Corridor Management***

The City of Austin is focused on better managing the entire regional transportation system and is seeking to integrate freeway and arterial management to improve traffic flow throughout the urban arterial system. This requires better data within the City's arterial system, improved signalization, and on-going partnerships with both area highway and transit operating agencies. A new regional transportation management center, with improved and expanded technologies, would initially focus on the I-35 Corridor with Integrated Corridor Management (ICM) strategies to better manage peak hour traffic flow, construction activities, crash and weather related diversions, and special event surges with state of the art technologies. Improved signalization and traveler information systems on surrounding parallel and feeder arterials would also be important tools to fully achieve the ICM strategies. Estimated cost of this project is \$30 million. Technology objectives would include:

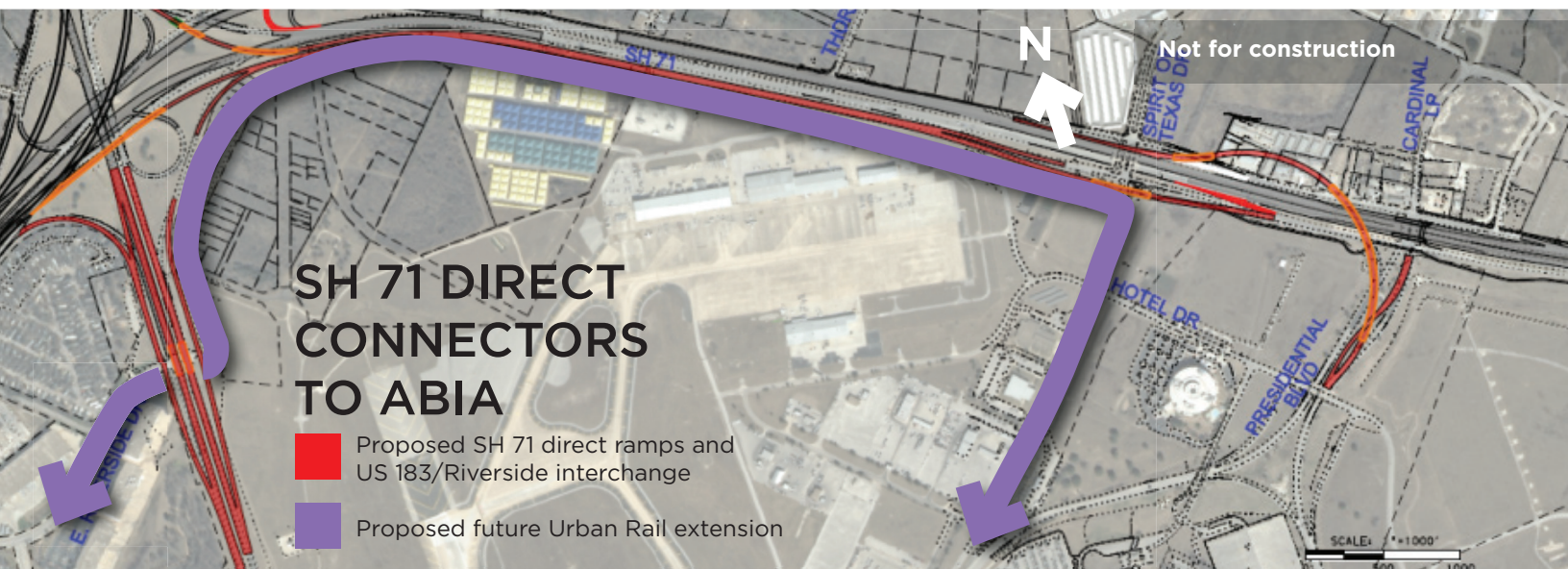
- Integrate corridor and incident management with ongoing 24/7 operations oversight
- Provide a multi-agency response to daily, construction, or incident related travel delay
- Optimize arterial, transit, and freeway networks with improved signalization to "level the load," deploying and using smart technologies to monitor and inform travel behavior
- Construct new signals and replace obsolete equipment to maximize the efficiency of the regional arterial system, reduce traffic congestion and increase signal system responsiveness
- Improve integration, management and operations of regional traffic signals, dynamic message signs, traffic cameras, detection systems, travel time monitoring equipment, and volume count stations across jurisdictional boundaries



- Provide actionable pre-trip and enroute traveler information via mobile devices and dynamic message signs about traffic conditions, roadway closures, incidents, and events

**Multi-modal Regional Roadways** that address congestion, and facilitate long-term transit investments, include:

- *SH 71 Direct Connectors to ABIA*, which will enable faster access to the airport for automobiles while also constructing portions of track bed, structures and drainage necessary for a future Urban Rail extension. TxDOT is currently improving the SH 71 corridor and proposes direct access ramps to ABIA from SH 71. The connection would greatly reduce anticipated traffic congestion within the SH 71/US 183 interchange caused by the confluence of regional travel streams with traffic destined to/from the ABIA terminals. This multi-modal project will include accommodation for elements of the track bed and environmental control systems to accommodate future rail extensions to the airport with minimal additional costs. Since the 2014 Austin Strategic Mobility Plan contemplates the construction of an Urban Rail system within the Riverside Corridor, terminating at approximately Grove Street (located to the west of ABIA TxDOT project) and the Project Connect System Plan calls for an extension to the regional airport, part of the funds for this project will be allocated to accelerate the feasibility analysis for connecting the existing proposed Urban Rail line in the Riverside Corridor to ABIA. This work would confirm alignment assumptions and requirements so that cost efficiencies with the TxDOT project could be maximized (The proposed budget for this effort is \$81.5 million).
- *US 183/Riverside Interchange*, as part of the SH 71 Direct Access Ramp Project to ABIA, a new grade separated overpass and interchange would be constructed at US 183 and Riverside Drive. This overpass would remove turn conflicts at the existing intersection and provide structure for a future Urban Rail extension to ABIA (The anticipated cost for this element is estimated at \$34 million).



**Regional Safety and Mobility, Corridor Development and Preliminary Engineering (including Project Connect Next Corridor Studies)**, for key regional roadways that experience congestion, traffic safety and have multi-modal mobility needs.

- ***Loop 360 Corridor Development Project (SH 71/290 to Loop 1 North)***: The proposed project represents a partnership project with TxDOT and others to conduct an open and meaningful public engagement process, work with corridor stakeholders to identify safety and congestion issues within the corridor, identify and design short-, mid- and long-term safety and mobility mitigation solutions to existing corridor constraints. This project will address the significant community concerns previously raised by residents in the corridor and seek solutions that would incrementally address overall safety and mobility challenges (The proposed budget for this effort is \$10 million).
- ***RM 620 and RM 2222 Corridor Development Project (Lakeline Area to Steiner Ranch and Four-Points to Loop 360)***: This project would consider the mobility needs on the western edge of Austin, evaluating the safety and congestion needs within the RM 620 and RM 2222 corridors. Each of these two roadways are today characterized as major urban arterials, operated and maintained by the TxDOT. Development pressures and environmental concerns have affected their original planned configuration, resulting in substantial congestion at key intersections, and a lack of alternative routes and travel options. The corridor development project will work with local stakeholders to define the most critical issues, identify a range of alternatives, and recommend a preferred approach for future regional consideration. This study will examine both land use options that might be employed to alleviate future problems as well as examine both roadway and transit options for this part of the city. It would include an extensive public engagement process to assist in the identification of issues and the range of viable solutions. The City of Austin would seek participation from both TxDOT and Travis County (The proposed budget for this effort is \$13 million).
- ***FM 734 Parmer Lane Corridor Development Project and Safety Program (Approximately Avery Ranch Road to US 290)***: The proposed corridor development and safety program would examine the entire extent of Parmer Lane within the City of Austin to identify and address where possible safety and congestion issues requiring near- and mid-term resolution. The program would seek to preserve the long-term ability of this corridor to efficiently convey the movement of goods and services as well as provide commuter transit options for residents adjacent this important north Austin corridor. The program would include a robust public engagement process to assist in the identification of issues and the range of viable solutions (The proposed budget for this effort is \$5 million).
- ***RM 1826 Corridor Safety Program (Slaughter Lane to US 290)***: The City of Austin, in partnership with Travis County, TxDOT, the Central Texas Mobility Authority and Capital Metro is currently investing in interim safety and mobility improvements to the US 290/SH 71 corridor in the vicinity of the Oak Hill Y. As an extension of these projects, the proposed RM 1826 safety program will examine existing and developing safety and mobility issues in this short corridor that feeds into the Oak Hill Y. Projects to identify the immediate safety issues that can be funded within the available safety program will be implemented. Long term projects requiring expanded funding will be identified by the City as potential partnering opportunities for future leveraged funding agreements with regional transportation providers (The proposed budget for this effort is \$8 million).
- ***Lamar Boulevard Development and High Capacity Transit Feasibility Program (Riverside to US 183)***: Portions of Lamar Boulevard are identified by the state as being among the top 100 most congested roadways in the state. The City of Austin, through the 2010 Mobility Bond, funded a corridor development program for North Lamar (north of US 183). As part of the 2012 Mobility Bond, Austin voters approved a similar corridor development program for South Lamar (south of Riverside Drive). The City is also in the process of initiating a Guadalupe Street/West Campus Corridor Program to identify mobility projects



that could improve east-west connectivity to the University as well as travel north-south through the district. The proposed Lamar Boulevard Corridor Development Program would examine opportunities to improve total mobility on the central portion of the Lamar Corridor, connecting with the recommendations identified in these three other corridor development projects. All modes of transportation will be considered, including high capacity transit options such as both urban rail and bus rapid transit to coordinate and build upon the Urban Rail investment. High capacity transit system elements will be evaluated to their logical destinations beyond the study limits if necessary and both traffic management and new capacity options will be considered for improving vehicle flow through the corridor (The proposed budget for this effort is \$5 million).

- ***Mueller High Capacity Transit and Corridor Development Program (Hancock Center to Mueller Community)***: As part of Project Connect, the City of Austin and its transit partners previously identified the potential for a high capacity transit connection between the Mueller community and Central Austin. Mueller and Central University/Downtown Austin are both identified as regional activity centers and a transit connection between the two has long been sought by area residents. The City of Austin recently completed the Airport Way Corridor Development plan that also called for a more intense transit presence within the corridor. The proposed Mueller High Capacity Transit and Corridor Development Program would seek to identify the optimal path forward for connecting the Mueller community to the University/Downtown Austin activity center. The development program will build on previous work within the corridor(s) and identify and prioritize appropriate technologies, routes, and funding opportunities to address transit connectivity issues between Mueller and the Central University/Downtown Austin activity centers (The proposed budget for this effort is \$1 million).
- ***Seaholm High Capacity Transit (HCT) and Corridor Development Program (Convention Center to Seaholm & West Austin)***: The Austin City Council has previously designated the 4th Street Corridor as a future east-west rail corridor in Downtown Austin to connect between the Convention Center and the developments in the Seaholm properties owned by the City of Austin. Capital Metro has deployed High Capacity Transit (Bus Rapid Transit) in the Guadalupe and Lavaca Corridors through Downtown Austin. The Lone Star Rail District has identified future Regional Rail using within the MoPac corridor. The proposed Seaholm HCT Corridor Development Program will examine the feasibility of connecting the Convention Center to the HCT investments in the Guadalupe and Lavaca Corridor, the future regional rail investments in the MoPac corridor and neighborhoods in West Austin, via the Seaholm District. Roadway improvements will also be examined to improve travel on the identified route corridors (The proposed budget for this effort is \$1 million).
- ***South/Southwest High Capacity Transit (HCT) Corridor Development Program (Downtown Austin to Hays County)***: The City of Austin is currently in partnership with regional transportation agencies, committed to bringing improved high capacity transit options to South and Southwest Austin. Corridors of study include the MoPac South Corridor serving Circle C and Oak Hill areas and the South Congress/South Lamar Corridor serving South-Central Austin. In addition, the City of Austin continues its work with TxDOT to improve the I-35 Corridor, potentially leading to the construction of new roadway capacity that could be used to facilitate high capacity transit within that corridor. The City of Austin is in partnership with the Lone Star Rail District to pursue Regional Commuter Rail within the UPRR/MoPac corridor serving South and Southwest Austin and ultimately connecting Austin to San Antonio. The proposed South/Southwest HCT Corridor Development Program will seek to identify these and other corridors of interest for possible implementation of future high capacity transit systems, linking these several corridors into an integrated network of transportation options. The proposed corridor development program would build on the regional Project Connect Service map that identified the South/Southwest as a high priority corridor for further development. It would seek to continue our partnership with Capital Metro, the Lone Star Rail District, TxDOT, Counties, and other transportation providers. The program would strive to enhance existing transit options by prioritizing park-

and-ride, transit priority technologies, and other capacity enhancing techniques to provide greater options for moving people, goods, and services throughout South and Southwest Austin (The proposed budget for this effort is \$1.5 million)

## High Capacity Transit: Project Connect

The Capital Area Metropolitan Planning Organization (CAMPO) 2035 Plan calls for high-capacity transit as an important part of the solution for improving mobility in Central Texas. In 2011, CAMPO formed a Transit Working Group (TWG) of regional elected and civic leaders to create a cohesive transit plan for our region with support from the City of Austin, Capital Metropolitan Transportation Authority (Capital Metro), Lone Star Rail District and CAMPO.

After 18 months of study and public involvement, the TWG endorsed the “Project Connect High-Capacity Transit System Plan” linking 25 activity centers, 13 cities, and 4 counties with a mix of Express Bus on Express Lanes, Bus Rapid Transit, Urban Rail, Commuter Rail, and Regional Rail. The Austin City Council, Capital Metro and Lone Star Rail District’s Board of Directors also endorsed the Project Connect High-Capacity Transit System Plan in resolutions on August 29, 2013, June 21, 2013 and October 4, 2013, respectively.

The TWG recognized that high-capacity transit is an important part of the solution for improving mobility in Central Texas and could also provide new travel options between Central Texas and the San Antonio metropolitan area.

The TWG determined that the Central Corridor is one of the highest priorities for regional high-capacity transit investment based on travel demand and high ridership potential, land use, economic development, employment, travel patterns and community input. A subsequent Central Corridor Advisory Group (CCAG) was formed of residents representing various constituencies to further evaluate and analyze the routes, alignments, modes, funding and organization and ensure a data-driven and open and transparent process with the community.

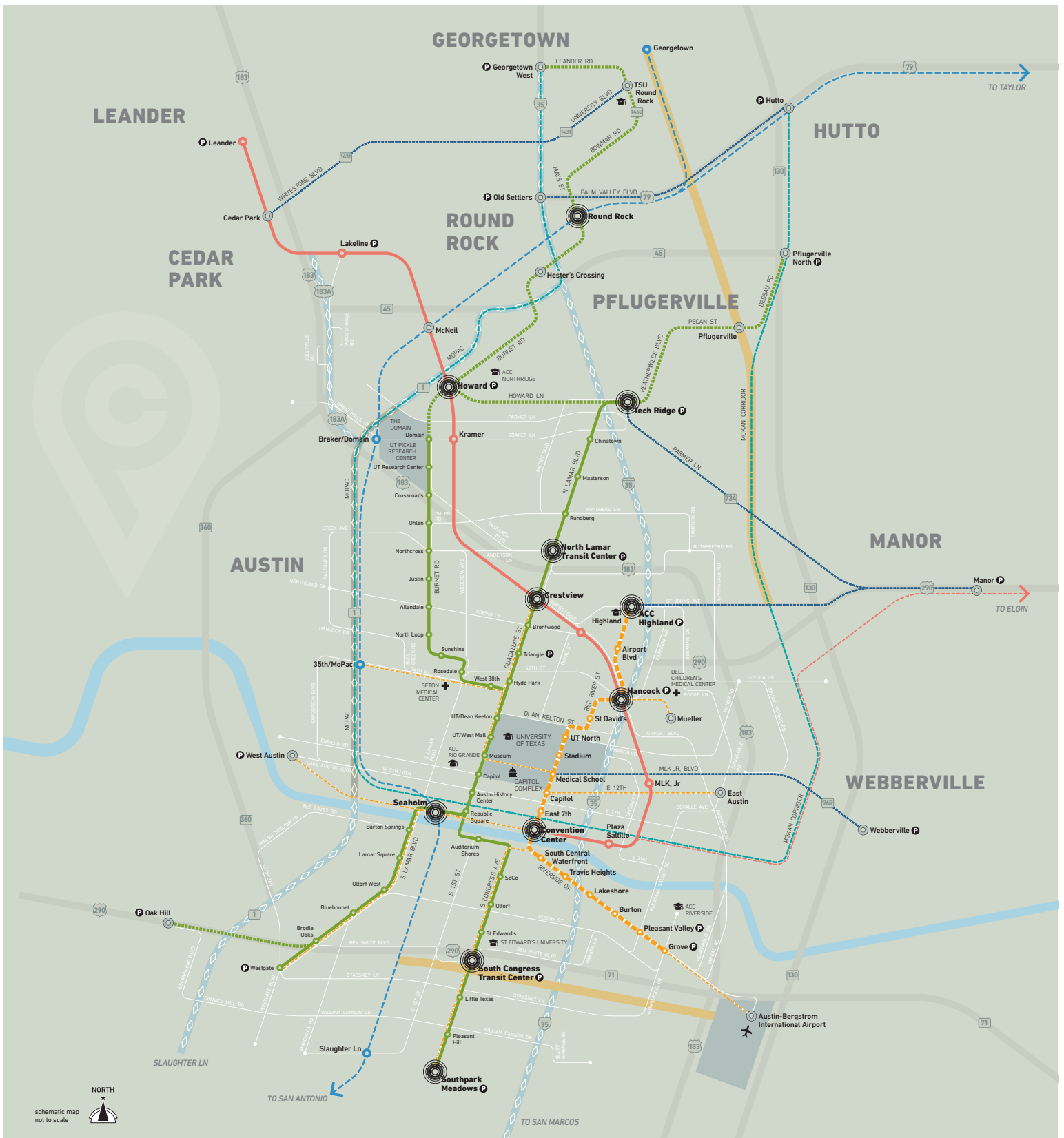
### **Central Corridor Urban Rail (recommended locally preferred alternative)**

The Central Corridor Advisory Group (CCAG), chaired by Mayor Lee Leffingwell, met throughout the year evaluating the most viable high-capacity transit alignment, mode, and service characteristics within the Central Corridor.

The Project Connect team identified and prioritized multiple sub-corridors appropriate for high-capacity transit investment, using the TWG priorities and an extensive data-driven process with equally extensive community involvement. The team ultimately recommended for further study the Core, East Riverside and Highland Sub-Corridors, as the next high-capacity transit investment area of the Project Connect High-Capacity System Plan. The recommendation was subsequently endorsed by the CCAG, Austin City Council, Capital Metro and Lone Star Rail District’s Board of Directors in resolutions on December 6, 2013, December 12, 2013, January 29, 2014 and February 6, 2014, respectively.

After further refinement from the project team on specific alignment, mode and service characteristics, CCAG endorsed the Project Connect team’s recommendation on June 13, 2014 for a Locally Preferred Alternative (LPA). The LPA consists of Urban Rail on a route from the East Riverside Corridor through the Downtown, Capitol Complex, Medical School Complex, the University of Texas to Hancock and Highland. The alignment and mode chosen maximize the service characteristics: stop spacing, speed, frequency, and reliability prioritized via public feedback. This investment is projected to take about 10,000 cars off the roadway every weekday.





CENTRAL TEXAS HIGH-CAPACITY TRANSIT SYSTEM PLAN  
adopted June 2012 / revised June 2014 / DRAFT

Corridors, stations, routes and transit modes for planned lines are conceptual only, and subject to review and modification.



#### Commuter Rail

MetroRail (operating)  
Extension (proposed)



#### Bus Rapid Transit

MetroRapid (operating)  
Extensions (proposed)



#### Regional Rail

LSTAR (proposed)



#### Transit in Express Lanes

MetroExpress (proposed)



#### Urban Rail

(proposed)  
Potential Future Extensions



#### Connect

MetroConnect  
Direct, limited-stop  
bus service (proposed)



#### Local Bus

MetroBus (operating)

Right-of-Way Preservation  
Potential Future Transportation  
Corridors

Express Lanes  
(planned)

Potential Future Extensions



Major Transfer Center



Rail or BRT Station



Planned Transit Destination



Park & Ride

## CENTRAL CORRIDOR



**Proposed First Line of Urban Rail**

Proposed Station

Transfer Point

## EXISTING HIGH-CAPACITY TRANSIT



**MetroRail**

**MetroRapid**

MetroRapid 801 is operating presently

MetroRapid 803 is coming Fall 2014

## PROPOSED HIGH-CAPACITY TRANSIT



**Potential Future Extension**



**Park & Ride**



**Planned Transit Destination**

**JUNE 2014** Subject to Change





The LPA meets the purpose and needs by providing a reliable alternative to congestion, reinforcing the success of the core through improved access and affordable mobility, and providing connectivity to the city's and region's activity centers. Additionally, the Urban Rail project provides a program compatible with urban physical constraints, with the bike and pedestrian components of the bridge to be built in accordance with the Council approved Waller Creek design, serving current demands and shaping future growth, implementing an integrated high-capacity transit system, and being competitive for Federal Transit Administration (FTA) funding.

**The Project Connect Central Corridor staff recommended Central Corridor LPA includes:**

- 9.5 mile Urban Rail double-tracked, electrified route in mostly dedicated guideways, with 10-15 minute frequency, stops one half to 1 mile apart, and with an average speed of 20-30 mph. The route runs along the following corridor:
  - Riverside corridor, Grove to South Shore
  - Ladybird Lake crossing at Trinity
  - Trinity Corridor, serving Convention Center, Downtown and Dell Medical School
  - San Jacinto, serving University of Texas
  - Red River serving St. David's Hospital and Hancock Center
  - Airport Boulevard to Highland ACC Campus
- Estimated 2030 daily ridership: 16,000-20,000 passengers per day
- 10,000 new transit riders to system
- Travel times: Grove to Convention Center = 11 minutes and ACC Highland to Convention Center = 17 minutes

### *Funding*

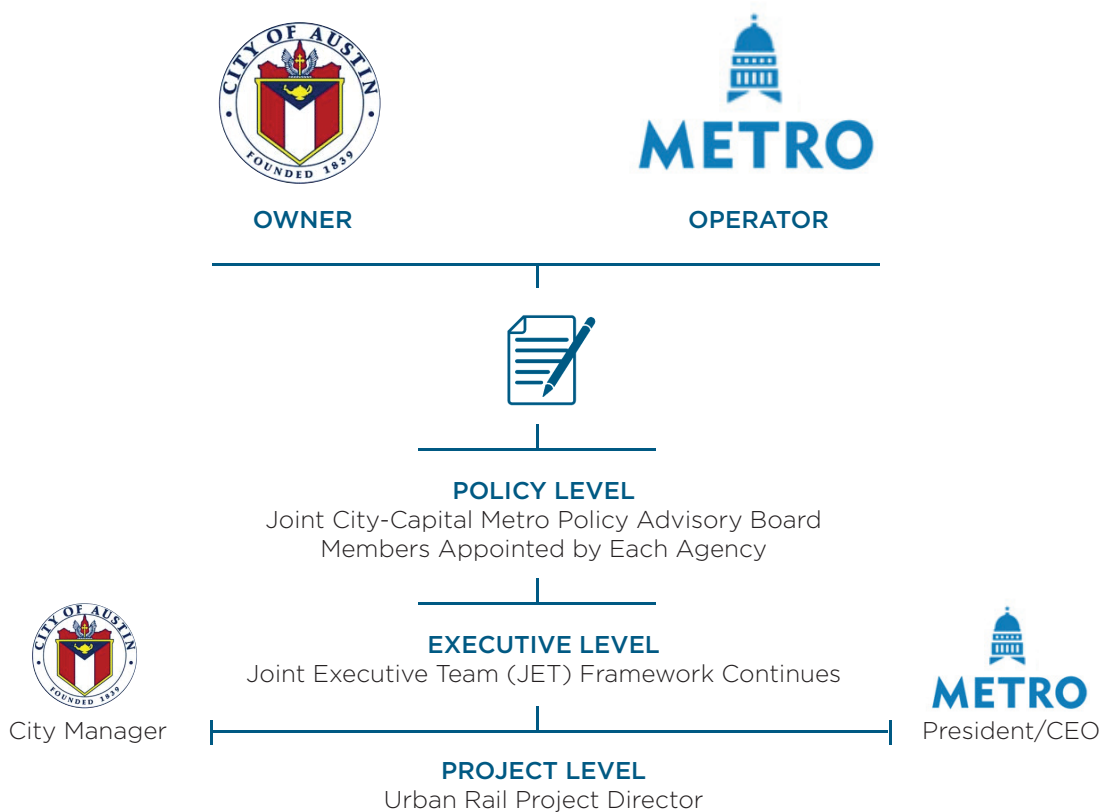
**Capital** – Costs to construct the LPA are estimated to total \$1.38 billion (2020 dollars). The city is planning on about one half (1/2) of that to be funded via grants from the Federal Transit Administration (FTA) and/or other granting agencies. Therefore, about \$700 million of the total capital funding would need to be funded from local, non-federal sources.

**Phasing** - The LPA contemplates a 9.5 mile urban rail system running from Riverside and Grove to the Highland/ACC campus. The costs include almost \$200 million for the Hancock to Highland portion of the route with almost \$100 million of those funds allocated for the interface (tunnel under existing rail line) with Capital Metro's Redline at the Hancock area. With design only at about 2-3% completion, this cost has been consciously set at a high level. With further refinement, these costs could come down. However, it is unknown at this time where the costs will ultimately land. With that in mind, the \$700 million estimate could be reduced in this next funding request. For example, a \$600 million request could be offered as long as it is clearly communicated that the LPA may have to be terminated at Hancock if the costs to construct all the way to the Highland/ACC campus don't drop substantially. In other words, the concept can remain to build from Grove to Highland with the understanding that Highland may not be achievable, but the intent will remain to perform the design and environmental clearance on the total 9.5 mile route.

**Operation and Maintenance** – Annual costs to operate the LPA in 2022 are estimated to total about \$22 million. Funding sources will be Capital Metro sales tax, FTA operating assistance (5307 funding), operations savings, fare revenue, the remaining/unallocated quarter (1/4) cent funds, parking revenue, potential Public Improvement Districts, etc.

## Governance

The City of Austin and Capital Metro will build on the existing Project Connect partnership with Austin as the “owner/constructor” and Capital Metro as the “operator.” The existing Executive Level “Joint Executive Team” framework will continue with an Urban Rail Project Director appointed to manage the day to day activities, including developing the New Starts grant submittal to the Federal Transit Administration. Both sovereign boards (the Austin City Council and the Capital Metro Board of Directors) would maintain their authority, with an Advisory Board consisting of Council members and Capital Metro Board members adding policy level guidance. An amended Interlocal Agreement (ILA), building on the existing agreement, will detail this partnership. The amendments to the ILA will be developed after November (due to workload considerations) and would be brought forward for consideration upon completion.





## SUMMARY OF 2014 AUSTIN STRATEGIC MOBILITY PLAN AND PROPOSED FUNDING

PROJECTS OF REGIONAL SIGNIFICANCE	PROPOSED FUNDING	NOTES/EXPECTED PROJECT START/DELIVERY
I-35 Downtown access roadway, Riverside Interchange	\$ 120M	Includes construction for Rail crossing. Project date: 2017
I-35 North/US 183 Interchange	Seek alternative funding	*No funding identified. City will advocate for alternative funding with regional partners. Project date: 2018
South I-35 Interchanges (Oltorf, Stassney, William Cannon)	\$ 90M	Project date varies 2015 (William Cannon to Stassney) - 2016 (Oltorf)
I-35 Regional TMC/ATMS	\$ 30M	Preliminary coordination underway. Project date: 2016
SH 71/ABIA Direct Access and Rail extension feasibility analysis	\$ 81.5M	Facilitates potential rail extension to ABIA. Project date: 2019
US 183/Riverside Interchange	\$ 34M	Facilitates potential rail extension to ABIA. Project date: 2019
Regional Safety and Mobility Corridor Development Programs (SL 360, RM 620, RM 2222, FM 734, Lamar, RM 1826, Seaholm, ABIA, South/Southwest, Mueller)	\$ 44.5M	Preliminary coordination underway for Loop 360; RR 620; RM 2222 and FM 734. Project date varies: 2015-2019
Urban Rail LPA E. Riverside to Highland ACC	\$ 600M	*Seek cost efficiencies/alternative funding for \$100M . If alternative funding or cost reductions are not achieved, build as far north of Hancock as possible. Engineering ongoing. Project date: 2019
<b>2014 Proposed Strategic Mobility Plan Total</b>	<b>\$1.0B</b>	

## Austin Strategic Mobility Plan 2014 – Funding Plan

**Capital Funding** - Financial staff evaluated the tax impact for various bond programs as part of the Bond Capacity Analysis in April 2014. They developed the tax rate increases projected over 5 years to fund programs up to a \$965 million – 6 cent increase. Since the \$1 billion program, shown above, exceeds the 6-cent tax rate increase scenario that staff presented, financial staff's subsequent analysis has determined that a tax rate increase of 6.25 cents would be required to issue \$1 billion in new bonds. As assumed with the other bond capacity scenarios, this 6.25 cent increase assumes an increase in assessed valuation. At 6.25 cents/ \$1 billion in new debt – the city would still be in compliance with its debt related financial policies. The tax rate increases required for alternative programs are shown below.

TAX RATE INCREASE OVER 5 YEARS	NEW DEBT CAPACITY
1-cent	\$115 million
2-cents	\$265 million
3-cents	\$440 million
4-cents	\$615 million
5-cents	\$790 million
6-cents	\$965 million
6.25 - cents	\$1.0 billion

**Operational and Maintenance Funding** – As stated above, the annual costs to operate the Urban Rail system in 2022 are estimated to total about \$22 million. Funding sources will be Capital Metro sales tax, FTA operating assistance (5307 funding), operations savings, fare revenue, the remaining/unallocated one quarter (1/4) cent funds, parking revenue, potential Public Improvement Districts, etc.

Funding for the operations and maintenance of the roadway projects will primarily be the responsibility of TxDOT since a majority of the projects in the Mobility Plan are on the State system.

# Appendix

- Transit Working Group Resolution on High-Capacity Transit (June 7, 2013)
- Capital Metropolitan Transportation Authority Board of Directors  
Project Connect Resolution of Support (June 21, 2013)
- Austin City Council Resolution No. 20130829-065 (August 29, 2013)
- Lone Star Rail District Resolution (October 4, 2013)
- Austin City Council Resolution No. 20131212-067 (December 12, 2013)
- Austin City Council Resolution No. 20140515-032 (May 15, 2014)
- Central Corridor Advisory Group Resolution on Central Corridor  
High-Capacity Transit Locally Preferred Alternative (June 13, 2014)



## **TRANSIT WORKING GROUP**

### **RESOLUTION ON HIGH-CAPACITY TRANSIT**

**WHEREAS**, the Transit Working Group (TWG), a subcommittee of the Capital Area Metropolitan Planning Organization (CAMPO), has deliberated for nearly 18 months on issues of regional mobility and connectivity; and

**WHEREAS**, the Transit Working Group has been supported in its deliberations by the Project Connect collaborative planning effort for high-capacity transit initiated by the Capital Metropolitan Transportation Authority, City of Austin, Lone Star Rail District and CAMPO; and

**WHEREAS**, central Texas' regional population is projected to double in the next 25 years and

**WHEREAS**, the TWG and the public agree that traffic congestion is a serious problem that threatens our region's economic health and quality of life and needs to be addressed; and

**WHEREAS**, high-capacity transit is an important part of the solution for improving mobility in Central Texas and will also provide new travel options between Central Texas and the San Antonio metropolitan area; and

**WHEREAS**, high-capacity transit includes modes such as Transit on Express Lanes, Bus Rapid Transit, Commuter/ Regional Rail and Urban Rail; and

**WHEREAS**, the TWG members have determined that the North and Central corridors are the highest priority for regional high-capacity transit based on travel

demand and high ridership potential, land use, economic development, employment and travel patterns, and

**WHEREAS**, high-capacity transit projects should maximize the use of dedicated rights-of-way and other means of gaining a travel time advantage where financially and physically reasonable; and

**WHEREAS**, future high-capacity transit projects should strive for a “true alternative” to driving, providing quality competitive trips between and within the CAMPO adopted regional activity centers and seamless connectivity between high-capacity transit components; and

**WHEREAS**, the TWG agrees that participating communities in the region should be required to participate financially if they benefit from the regional transit system (“pay to play”); and

**WHEREAS**, funding contributions from participating communities should be equitable (each pay a “fair share” and/or make “equal effort” in funding); and

**WHEREAS**, the TWG finds that the Project Connect effort to plan, fund and operate a regional high-capacity transit system as a “Single System” provides a solid framework that should be further developed; and

**NOW THEREFORE BE IT RESOLVED**, that the TWG endorses the vision as outlined in the Project Connect process; and **THE TWG ENCOURGES** the Central and North Corridor Studies project team and working groups to use the TWG Priorities and Recommendations to be outlined in the forthcoming System Plan to further evaluate and analyze the routes, alignments, modes, funding and organization; and.

**THE TWG DIRECTS** the Project Connect team to draft a report that summarizes its deliberations, findings and recommendations and return it to the Transit Working Group members for comment before submission to the CAMPO Transportation Policy Board of Directors; and that

**THE TWG RECOMMENDS** the report's findings and recommendations be incorporated to the fullest extent possible in the CAMPO 2040 Plan, especially projects identified for implementation under the anticipated initial available funding, and

**THE TWG ALSO RESOLVES** that Project Connect should continue its efforts to inform area agencies, organizations and the public about the TWG's recommendations and Project Connect efforts on high-capacity transit for Central Texas; and

**THE TWG MEMBERS EACH RESOLVE** to seek endorsement of the Project Connect high-capacity transit plan from each of their respective organizations, and continue support of the regional process.

**FURTHER, THE TWG REQUESTS** that it continue its regional advisory role including receiving updates from the corridor studies and subsequent recommendations to amend the Project Connect System Plan as needed.

**ADOPTED:** June 7, 2013    **ATTEST:** 



**METRO**

**RESOLUTION  
OF THE  
CAPITAL METROPOLITAN TRANSPORTATION AUTHORITY  
BOARD OF DIRECTORS**

**STATE OF TEXAS**

**COUNTY OF TRAVIS**

**RESOLUTION CMTA-2013-49**

**Project Connect Resolution of Support**

**WHEREAS, the Transit Working Group (TWG), a subcommittee of the Capital Area Metropolitan Planning Organization (CAMPO), has deliberated for nearly 18 months on issues of regional mobility and connectivity; and**

**WHEREAS, the Transit Working Group has been supported in its deliberations by the Project Connect collaborative planning effort for high-capacity transit initiated by the Capital Metropolitan Transportation Authority, City of Austin, Lone Star Rail District and CAMPO; and**

**WHEREAS, Central Texas' regional population growth is projected to double in the next 25 years; and**

**WHEREAS, the TWG and the public agree that traffic congestion is a serious problem that threatens our region's economic health and quality of life and needs to be addressed; and**

**WHEREAS, high-capacity transit is an important part of the solution for improving mobility in Central Texas and will also provide new travel options between Central Texas and the San Antonio metropolitan area; and**

**WHEREAS, high-capacity transit includes modes such as Transit on Express Lanes, Bus Rapid Transit, Commuter/ Regional Rail and Urban Rail; and**

**WHEREAS, the TWG members have determined that the North and Central corridors are the highest priority for regional high-capacity transit based on travel demand and high ridership potential, land use, economic development, employment and travel patterns; and**

**WHEREAS, high-capacity transit projects should maximize the use of dedicated rights-of-way and other means of gaining a travel time advantage where financially and physically reasonable; and**

[ ]

**WHEREAS**, future high-capacity transit projects should strive for a "true alternative" to driving, providing quality competitive trips between and within the CAMPO adopted regional activity centers and seamless connectivity between high-capacity transit components; and

**WHEREAS**, the TWG agrees that participating communities in the region should be required to participate financially if they benefit from the regional transit system ("pay to play"); and

**WHEREAS**, funding contributions from participating communities should be equitable (each pay a "fair share" and/or make "equal effort" in funding); and

**WHEREAS**, the TWG finds that the Project Connect effort to plan, fund and operate a regional high-capacity transit system as a "Single System" provides a solid framework that should be further developed.

**NOW THEREFORE BE IT RESOLVED**, that the Capital Metro Board of Directors endorses the vision as outlined in the Project Connect process; and encourages the Central and North Corridor Studies project team and working groups to use the TWG Priorities and Recommendations to be outlined in the forthcoming System Plan to further evaluate and analyze the routes, alignments, modes, funding and organization; and

**BE IT FURTHER RESOLVED** that the Project Connect Final Report be submitted to the CAMPO Board of Directors and that the report's findings and recommendations be incorporated to the fullest extent possible in the CAMPO 2040 Plan, especially including projects identified for implementation under the anticipated initial funding availability, and

**BE IT FURTHER RESOLVED** that Project Connect should continue its efforts to inform area agencies, organizations and the public about the TWG's recommendations and Project Connect efforts on high-capacity transit for Central Texas.

**RESULT:**       **ADOPTED [UNANIMOUS]**  
**MOVER:**       John Langmore, Vice Chair  
**SECONDER:**   Frank Fernandez, Secretary  
**AYES:**        Chafetz, Silas, Langmore, Fernandez, Stafford, Siebold, Martinez,  
                  Riley

**Date: June 21, 2013**

**Secretary of the Board --**  
**Frank Fernandez**

**RESOLUTION NO. 20130829-065**

**WHEREAS**, the Transit Working Group (TWG), a subcommittee of the Capital Area Metropolitan Planning Organization (CAMPO), has deliberated for nearly 18 months on issues of regional mobility and connectivity; and

**WHEREAS**, the Transit Working Group has been supported in its deliberations by the Project Connect collaborative planning effort for high-capacity transit initiated by the Capital Metropolitan Transportation Authority, City of Austin, Lone Star Rail District and CAMPO; and

**WHEREAS**, Central Texas' regional population is projected to double in the next 25 years; and

**WHEREAS**, Council and the public agree that deteriorating mobility is a serious problem that threatens our region's economic health and quality of life and needs to be addressed; and

**WHEREAS**, high-capacity transit is an important part of the solution for improving mobility in Central Texas and will also provide new travel options between Central Texas and the San Antonio metropolitan area; and

**WHEREAS**, high-capacity transit includes modes such as Transit on Express Lanes, Bus Rapid Transit, Commuter/ Regional Rail and Urban Rail; and

**WHEREAS**, the TWG members have determined that the North and Central corridors are the highest priority for regional high-capacity transit



based on travel demand and high ridership potential, land use, economic development, employment and travel patterns, and

**WHEREAS**, high-capacity transit projects should maximize the use of dedicated rights-of-way and other means of gaining a travel time advantage where financially and physically reasonable; and

**WHEREAS**, future high-capacity transit projects should strive for a “true alternative” to driving, providing quality competitive trips between and within the CAMPO adopted regional activity centers and seamless connectivity between high-capacity transit components; and

**WHEREAS**, Council agrees that participating communities in the region should be required to participate financially if they benefit from the regional transit system (“pay to play”); and

**WHEREAS**, funding contributions from participating communities should be equitable (each pay a “fair share” and/or make “equal effort” in funding); and

**WHEREAS**, Council finds that the Project Connect effort to plan, fund and operate a regional high-capacity transit system as a “Single System” provides a solid framework that should be further developed; **NOW THEREFORE**,

**BE IT RESOLVED BY THE CITY COUNCIL OF THE CITY OF AUSTIN:**

The Austin City Council endorses the vision as outlined in the Project Connect process; and encourages the Central and North Corridor project teams and advisory groups to use the TWG Priorities and Recommendations

to be outlined in the forthcoming System Plan to further evaluate and analyze the routes, alignments, modes, funding and organization.

**BE IT FURTHER RESOLVED:**

That the Project Connect Final Report be submitted to the CAMPO Board of Directors and that the report's findings and recommendations be incorporated to the fullest extent possible in the CAMPO 2040 Plan, especially including projects identified for implementation under the anticipated initial funding availability.

**BE IT FURTHER RESOLVED:**

That Project Connect should continue its efforts to inform area agencies, organizations and the public about the TWG's recommendations and Project Connect efforts on high-capacity transit for Central Texas.

**ADOPTED:** August 29, 2013

**ATTEST:**

  
Jannette S. Goodall  
City Clerk

# ***LONE STAR RAIL DISTRICT***

## **RESOLUTION**

**WHEREAS**, the Transit Working Group (TWG), a subcommittee of the Capital Area Metropolitan Planning Organization (CAMPO), has deliberated for nearly 18 months on issues of regional mobility and connectivity; and

**WHEREAS**, the Transit Working Group has been supported in its deliberations by the Project Connect collaborative planning effort for high-capacity transit initiated by the Capital Metropolitan Transportation Authority, City of Austin, Lone Star Rail District and CAMPO; and

**WHEREAS**, Central Texas' regional population is projected to double in the next 25 years; and

**WHEREAS**, the Lone Star Rail District Executive Committee and the public agree that traffic congestion is a serious problem that threatens our region's economic health and quality of life and needs to be addressed; and

**WHEREAS**, high-capacity transit is an important part of the solution for improving mobility in Central Texas and will also provide new travel options between Central Texas and the San Antonio metropolitan area; and

**WHEREAS**, high-capacity transit includes modes such as Transit on Express Lanes, Bus Rapid Transit, Commuter/ Regional Rail and Urban Rail; and

**WHEREAS**, the TWG members have determined that the North and Central corridors are the highest priority for regional high-capacity transit based on travel demand and high ridership potential, land use, economic development, employment and travel patterns, and

**WHEREAS**, high-capacity transit projects should maximize the use of dedicated rights-of-way and other means of gaining a travel time advantage where financially and physically reasonable; and

**WHEREAS**, future high-capacity transit projects should strive for a "true alternative" to driving, providing quality competitive trips between and within the CAMPO adopted regional activity centers and seamless connectivity between high-capacity transit components; and



**WHEREAS**, the Lone Star Rail District Executive Committee agrees that participating communities in the region should be required to participate financially if they benefit from the regional transit system ("pay to play"); and

**WHEREAS**, funding contributions from participating communities should be equitable (each pay a "fair share" and/or make "equal effort" in funding); and

**WHEREAS**, the Lone Star Rail District Executive Committee finds that the Project Connect effort to plan, fund and operate a regional high-capacity transit system as a "Single System" provides a solid framework that should be further developed; and

**NOW THEREFORE BE IT RESOLVED**, that the Lone Star Rail District Executive Committee endorses the vision as outlined in the Project Connect process; and encourages the Central and North Corridor Studies project teams and advisory groups to use the TWG Priorities and Recommendations to be outlined in the forthcoming System Plan to further evaluate and analyze the routes, alignments, modes, funding and organization; and

**BE IT FURTHER RESOLVED** that the Project Connect Final Report be submitted to the CAMPO Transportation Policy Board and that the report's findings and recommendations be incorporated to the fullest extent possible in the CAMPO 2040 Plan, especially including projects identified for implementation under the anticipated initial funding availability, and

**BE IT FURTHER RESOLVED** that Project Connect should continue its efforts to inform area agencies, organizations and the public about the TWG's recommendations and Project Connect efforts on high-capacity transit for Central Texas.

A handwritten signature in black ink, appearing to read "Sid Covington", is written over a horizontal line.

Sid Covington, Chairman  
Lone Star Rail District Board of Directors

October 4, 2013

**RESOLUTION NO. 20131212-067**

**WHEREAS**, the City Council, Capital Metro and Lone Star Rail District's Board of Directors endorsed the Project Connect High-Capacity Transit System Plan in resolutions on June 21, 2013, August 29, 2013 and October 4, 2013, respectively; and

**WHEREAS**, the Transit Working Group (TWG), a subcommittee of the Capital Area Metropolitan Planning Organization (CAMPO) was supported in its deliberations by the Project Connect collaborative planning effort for high-capacity transit, initiated by the Capital Metropolitan Transportation Authority (Capital Metro/CMTA), the City of Austin, Lone Star Rail District and CAMPO; and

**WHEREAS**, the TWG members determined that the North and Central corridors are the highest priority for regional, high-capacity transit, based on travel demand and high ridership potential, land use, economic development, employment, and travel patterns; and

**WHEREAS**, the TWG encouraged the Central and North Corridor Studies project team and working groups to use the TWG priorities and recommendations outlined in the system plan to further evaluate and analyze the routes, alignments, modes, funding, and organization; and

**WHEREAS**, the TWG finds that the Project Connect effort to plan, fund and operate a regional high-capacity transit system as a single system provides a solid framework that should be further developed; and

**WHEREAS**, Central Texas's regional population is projected to double in the next 25 years. and the TWG and the public agree that traffic

congestion is a serious problem that threatens our region's economic health and quality of life and needs to be addressed; and

**WHEREAS**, high-capacity transit is an important part of the solution for improving mobility in Central Texas and will also provide new travel options between Central Texas and the San Antonio metropolitan area; and

**WHEREAS**, high-capacity transit projects should maximize the use of dedicated rights-of-way and other means of gaining a travel time advantage where financially and physically reasonable; and

**WHEREAS**, future high-capacity transit projects should strive for a true alternative to driving, providing quality competitive trips between and within the CAMPO adopted regional activity centers and seamless connectivity between high-capacity transit components; and

**WHEREAS**, the Project Connect team has identified several sub-corridors which are appropriate for high-capacity transit investment; **NOW, THEREFORE,**

**BE IT RESOLVED BY THE CITY COUNCIL OF THE CITY OF AUSTIN:**

The City Council endorses the City Manager's Phase 1 recommendation to further evaluate and analyze the East Riverside and Highland Sub-Corridors as the Central Corridor priority for further evaluation of alignment and mode and selection of a possible draft Locally Preferred Alternative as part of Phase 2 of the project effort.



**BE IT FURTHER RESOLVED:**

The City Manager is directed to continue efforts to inform area agencies, organizations, and the public about the Project Connect efforts on high-capacity transit for Central Texas.

**BE IT FURTHER RESOLVED:**

The City Manager is directed to work with Project Connect to identify future funding needs and potential sources to prioritize and continue critical Central Corridor project definition and development activities in the remaining identified sub-corridors, including the Lamar, Mueller, and East Austin sub-corridors, and report back to Council by August 1, 2014.

**BE IT FURTHER RESOLVED:**


The City Manager is directed to work with Project Connect and CMTA to continue cultivating a relationship with our regional Federal Transit Administration officials to cooperatively prepare for any future high-capacity transit investments in the Lamar sub-corridor.

**BE IT FURTHER RESOLVED:**

The City Manager is directed to present a draft Locally Preferred Alternative for Council consideration in Spring/Summer of 2014.

**ADOPTED:** December 12, 2013

**ATTEST:**

  
Jannette S. Goodall  
City Clerk

**RESOLUTION NO. 20140515-032**

**WHEREAS**, Austin is now the 11th largest city in the U.S and our Metropolitan Statistical Area is projected to pass two million in 2015; and

**WHEREAS**, the City of Austin has an interest in the mobility provided by our transportation network for through traffic, local traffic and for both north-south and east-west mobility; and

**WHEREAS**, according to information from the Census Bureau, during the last three years, our metro area has seen the fastest growth among the top 30 metropolitan areas in the country with approximately 110 people moving to the area every single day and is expected to continue being one of the fastest growing regions in America; and

**WHEREAS**, on the INRIX web site, Austin is listed as one of the most gridlocked cities in America, wedged between San Francisco and New York; and

**WHEREAS**, the Texas Transportation Institute's "Mobility Investment Priority Study" concluded that all transportation modes will be required to address our growing traffic congestion; and

**WHEREAS**, our region is conducting major planning efforts for high capacity transit through Project Connect (connects 4 counties, 13 cities and 25 activity centers), which produced Mobility 35, a feasibility study to improve the efficiency of our nation's 4th most congested roadway (I-35); and Capital Area Metropolitan Planning

Organization (CAMPO) is developing their 2040 Long Range Plan which includes projects of regional significance; the Central Texas Regional Mobility Authority (Mobility Authority) is constructing express lanes on MoPac North and conducting an environmental study on MoPac South from Cesar Chavez to Slaughter Lane; and

**WHEREAS**, the City of Austin has partnered with other transportation organizations on regional roadway facilities and high capacity transit including the Texas Department of Transportation (TxDOT) on Mobility 35; and with the Mobility Authority on the MoPac Improvement Project; and with CAMPO, Lone Star Rail, Capital Metropolitan Transportation Authority on Project Connect; and

**WHEREAS**, solutions to mobility requires a multi-modal transportation system that works seamlessly together to address congestion and increase mobility throughout the community; and

**WHEREAS**, the design and successful implementation of mobility improvements to the IH 35 Corridor through central Austin represents a major opportunity for our community to address the long standing east/west mobility barriers and deficiencies of Austin's busiest road; and

**WHEREAS**, the City of Austin is considering a transportation bond referendum in November of 2014; **NOW THEREFORE**,

**BE IT RESOLVED BY THE CITY COUNCIL OF THE CITY OF AUSTIN:**

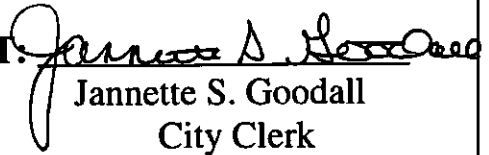
The City Council directs the City Manager to brief Council, by June 26, 2014, on



potential road and highway improvements, that are consistent with the values set forth by City Council in the Imagine Austin Plan, for IH-35 and other road projects of regional significance, including options for funding to construct and plan these projects, partnering opportunities with other transportation agencies, and the potential for including these projects in the November 2014 bond referendum.

**ADOPTED:** May 15, 2014

**ATTEST:**

  
Jannette S. Goodall  
City Clerk

## **CENTRAL CORRIDOR ADVISORY GROUP**

### **RESOLUTION ON CENTRAL CORRIDOR HIGH-CAPACITY TRANSIT LOCALLY PREFERRED ALTERNATIVE**

**WHEREAS**, the Project Connect: Central Corridor High-Capacity Transit Study was jointly initiated in 2013 by the City of Austin, Capital Metro Transportation Authority, and the Lone Star Rail District; and

**WHEREAS**, the Central Corridor Advisory Group (CCAG) was formed to advise the Mayor and the project team in prioritizing and defining a preferred alignment for the next high-capacity transit investment for the Central Corridor; and

**WHEREAS**, the CCAG charge is to ensure an open and transparent public process; and

**WHEREAS**, the CCAG charge is to assist the project team in a meaningful dialogue with the community; and

**WHEREAS**, the Central Corridor project team identified, defined, and evaluated ten sub-corridors within the Central Corridor; and

**WHEREAS**, the Central Corridor project team presented the results of their analysis to the public, stakeholder groups, and the CCAG, along with a Phase 1 recommendation to select the East Riverside and Highland sub-corridors for advancement to Phase 2 and the evaluation of alignments and modes; and

**WHEREAS**, the CCAG endorsed the project team Phase 1 recommendation of the East Riverside and Highland sub-corridors as the Central Corridor priority for further evaluation of alignment and mode, and selection of a Locally Preferred Alternative (LPA) during Phase 2; and

**WHEREAS**, the CCAG recommended that the project team continue critical Central Corridor system level planning and project development, with special consideration of the next tier of sub-corridors, including East Austin, Lamar, and Mueller, along with a crosstown connection to MetroRapid and future LSTAR service at Seaholm; and

**WHEREAS**, the Project Connect team has recommended a Locally Preferred Alternative of an urban rail transit mode on a route from the East

Riverside Corridor through the Downtown, Capitol Complex, and University of Texas Core to Highland for Phase 2 of the Central Corridor project;

**WHEREAS**, the proposed first line of urban rail directly addresses the regional and Central Corridor challenges and opportunities: Congestion, Core, Centers, Constraints, Growth, System, and Funding.

**NOW THEREFORE, BE IT RESOLVED:**

The CCAG endorses the project team recommended Locally Preferred Alternative (LPA) that serves East Riverside, Downtown, Capitol Complex, Medical School Complex, University of Texas, and Highland with urban rail.

**BE IT FURTHER RESOLVED:**

The CCAG endorses the City of Austin and Capital Metro partnership approach to a) governance; and b) funding, which includes securing a matching federal funding commitment to build the proposed project, and an identifiable, secure source of combined City-Capital Metro projected Operating and Maintenance funds at levels that are sufficient to support the new urban rail service without adversely impacting the remaining portions of the transit system operations.

**BE IT FURTHER RESOLVED:**

The CCAG recommends that the project team pursue environmental clearance of the recommended LPA.

**BE IT FURTHER RESOLVED:**

The CCAG recommends the continued use of data to monitor population trends, demographics, existing transit ridership, and economic development activities as the LPA advances towards implementation.

**ADOPTED:** \_\_\_\_\_, 2014      **ATTEST:** \_\_\_\_\_

Jannette Goodall  
City Clerk



Austin Transportation Department  
512.974.1150 | [austintexas.gov](http://austintexas.gov)