



MEMORANDUM

TO: Mayor and City Council

FROM: Rosie Truelove, Director
Neighborhood Housing and Community Development Department

DATE: July 8, 2020

SUBJECT: RENT (Relief of Emergency Needs for Tenants Program)

This memorandum serves to provide summary information related to the City of Austin RENT (Relief of Emergency Needs for Tenants) Program, which was funded by the City of Austin's Housing Trust Fund and administered by the Housing Authority of the City of Austin (HACA). Staff in the Neighborhood Housing and Community Development Department (NHCD) have worked with HACA to provide data regarding attributes of the households assisted through the program. This information is in the attachment, and includes the number of households served, household zip code, income, the average number of family members, age, race, ethnicity, veteran, and disability status.

The RENT program served nearly 1,680 City of Austin households, providing more than \$1.2 million in emergency rental assistance to households in need. Of the households served, nearly two-thirds earned at or below 30% of the Median Family Income (MFI). The majority of households served identified as LatinX households, and nearly 20% identified as African-American or Black. Geographically, the RENT program served households across the City of Austin, with the highest concentration in near Southeast and Northeast zip codes.

Based on a thorough data analysis of the RENT program, coupled with stakeholder and City Council feedback, NHCD is working to enhance program design to better serve the most vulnerable population and to better reach targeted populations. NHCD plans to launch an expanded RENT program, in conjunction with community-based partners, in the coming weeks. Should you have any questions, please feel free to contact Mandy DeMayo, Community Development Administrator, at (512) 974-1091.

cc: Spencer Cronk, City Manager
Nuria Rivera-Vandermyde, Deputy City Manager
Rodney Gonzales, Assistant City Manager
CMO Executive Team

Attachment

Households Served through the RENT Program in May 2020

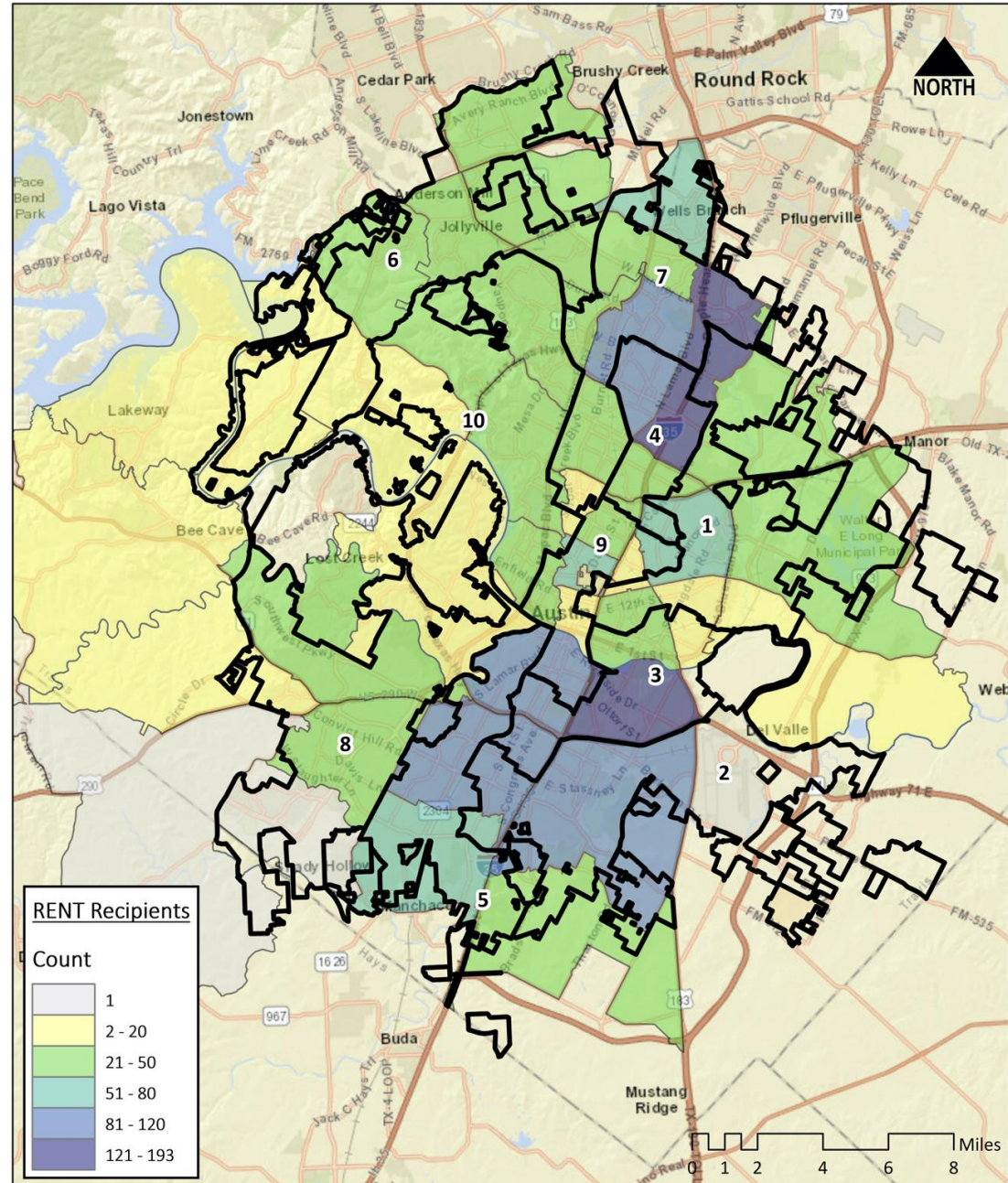


Top 18 Zip Codes Served

Recipient Zip Code	Recipient Count	Percent of Total
78741	193	11.5%
78753	128	7.6%
78745	108	6.4%
78704	106	6.3%
78758	95	5.7%
78744	82	4.9%
78748	72	4.3%
78705	71	4.2%
78723	70	4.2%
78728	57	3.4%
78702	50	3.0%
78759	45	2.7%
78729	42	2.5%
78717	40	2.4%
78752	40	2.4%
78731	39	2.3%
78750	35	2.1%
78754	35	2.1%

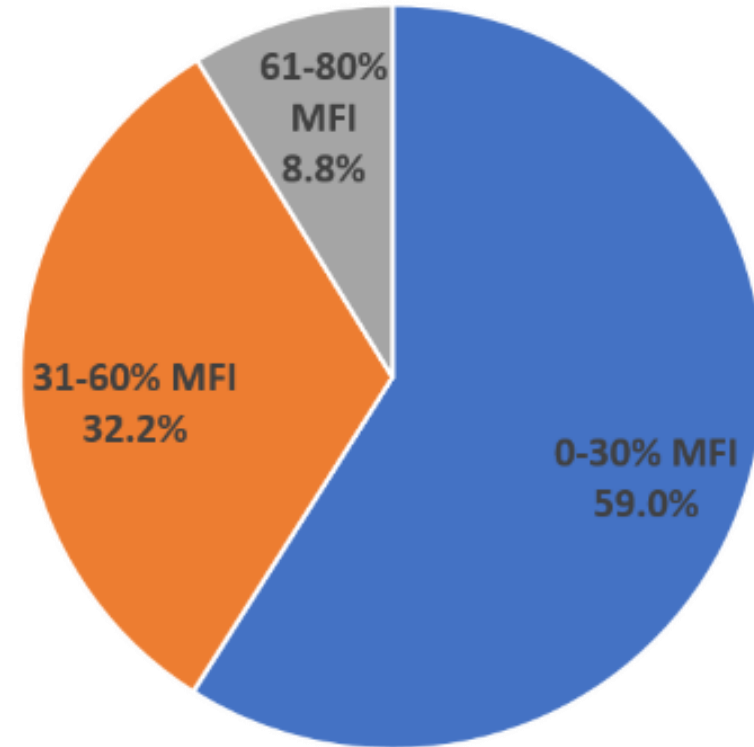
Source: RENT Program Data from HACA

RENT Program Recipients and City Council Districts



Median Family Income

Median Family income	Number of Households Served	Percentage of Households Served
0-30% MFI	728	59.0%
31-60% MFI	398	32.2%
61-80% MFI	109	8.8%
TOTAL	1,235	100.0%

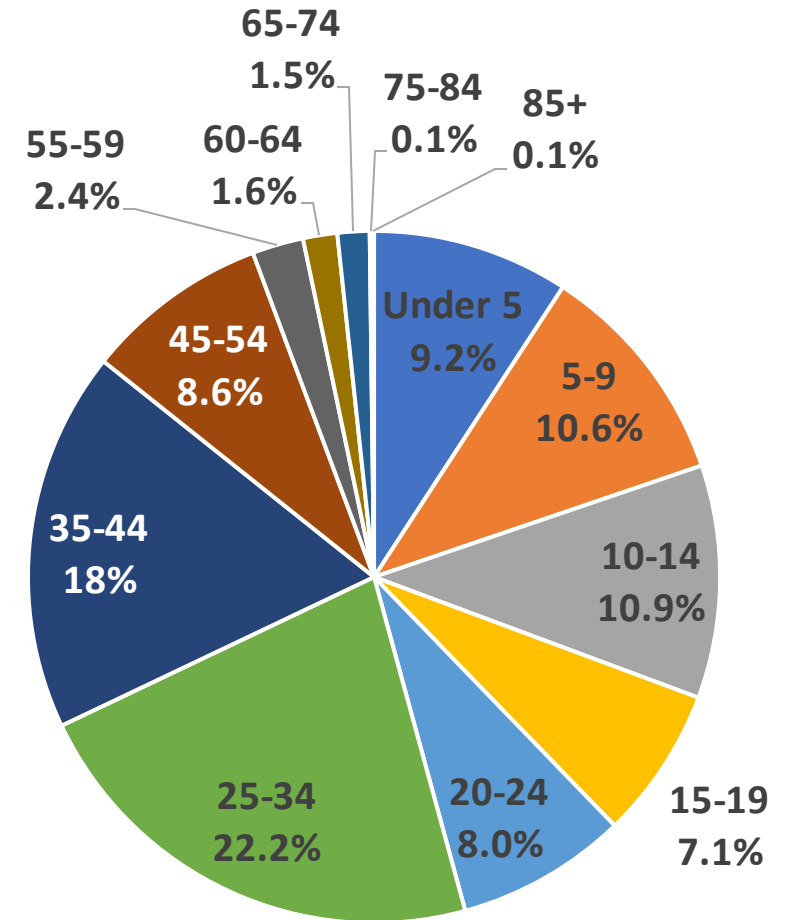


This chart is based on information provided by applicants during the initial application process. It does not include households for which income information was not included on the initial application. The incomes for all households were verified as part of the review process.

Source: RENT Program Data from HACA

Age

Age	Number of Persons Served	Percent of Persons Served
Under 5	343	9.2%
5-9	392	10.6%
10-14	404	10.9%
15-19	263	7.1%
20-24	296	8.0%
25-34	825	22.2%
35-44	662	17.6%
45-54	320	8.6%
55-59	88	2.4%
60-64	59	1.6%
65-74	56	1.5%
75-84	5	0.1%
85+	2	0.1%
TOTAL	3,715	100.0%

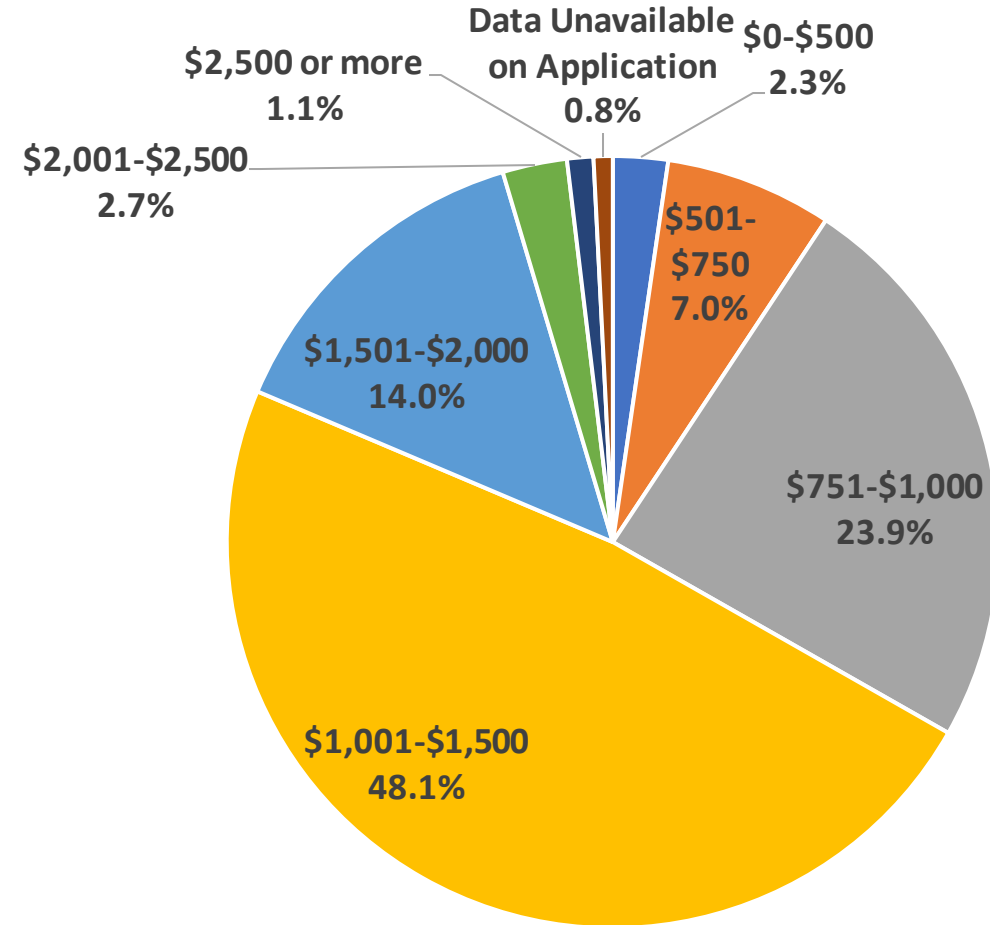


Median Age Served: 27.0

Source: RENT Program Data from HACA

Household Rent Amount (Monthly)

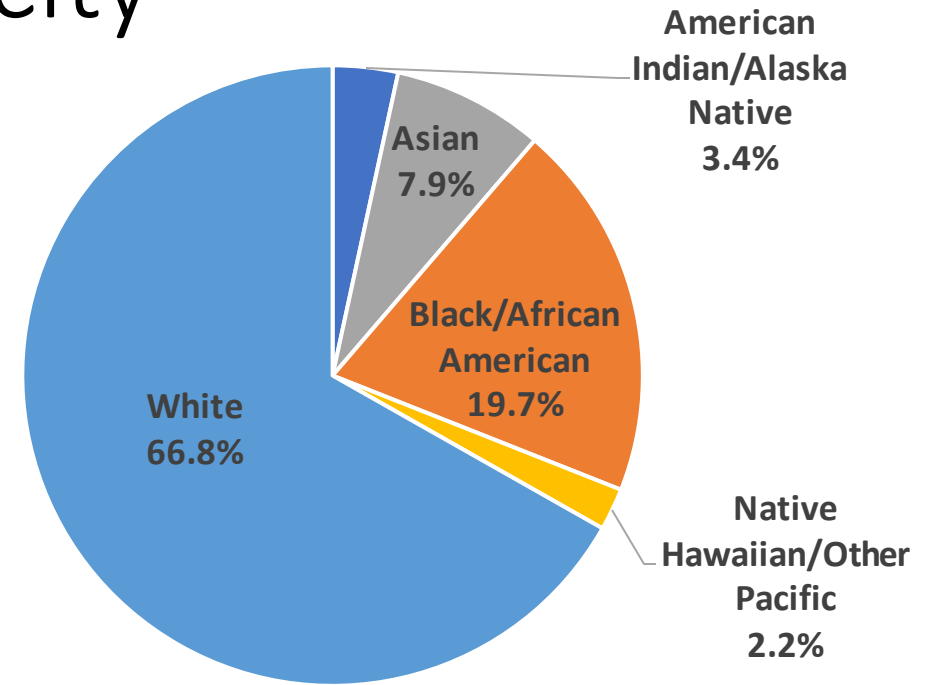
Rent Amount (Monthly)	Number of Households Served	Percentage of Households Served
\$0-\$500	39	2.3%
\$501-\$750	117	7.0%
\$751-\$1,000	401	23.9%
\$1,001-\$1,500	806	48.1%
\$1,501-\$2,000	235	14.0%
\$2,001-\$2,500	46	2.7%
\$2,500 or more	19	1.1%
Data Unavailable on Application	14	0.8%
Total	1,677	100.0%



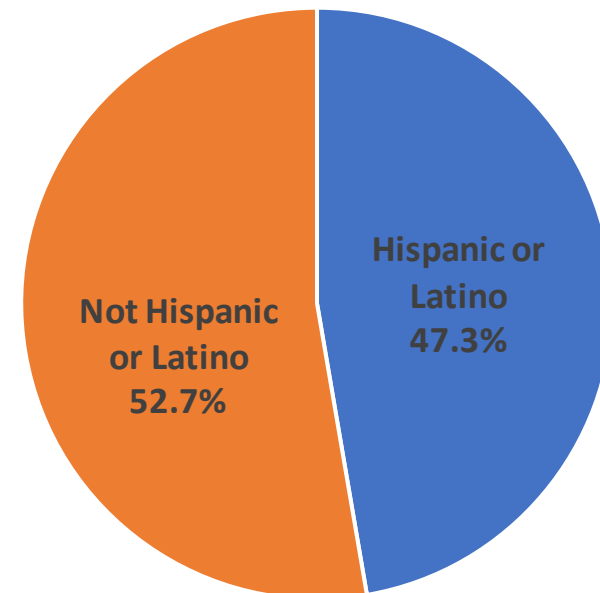
Source: RENT Program Data from HACA

Race and Ethnicity

Race	Number of Persons Served	Percent of Persons Served
American Indian/Alaska Native	128	3.4%
Asian	294	7.9%
Black/African American	732	19.7%
Native Hawaiian/Other Pacific	80	2.2%
White	2,481	66.8%
Total	3,715	100.0

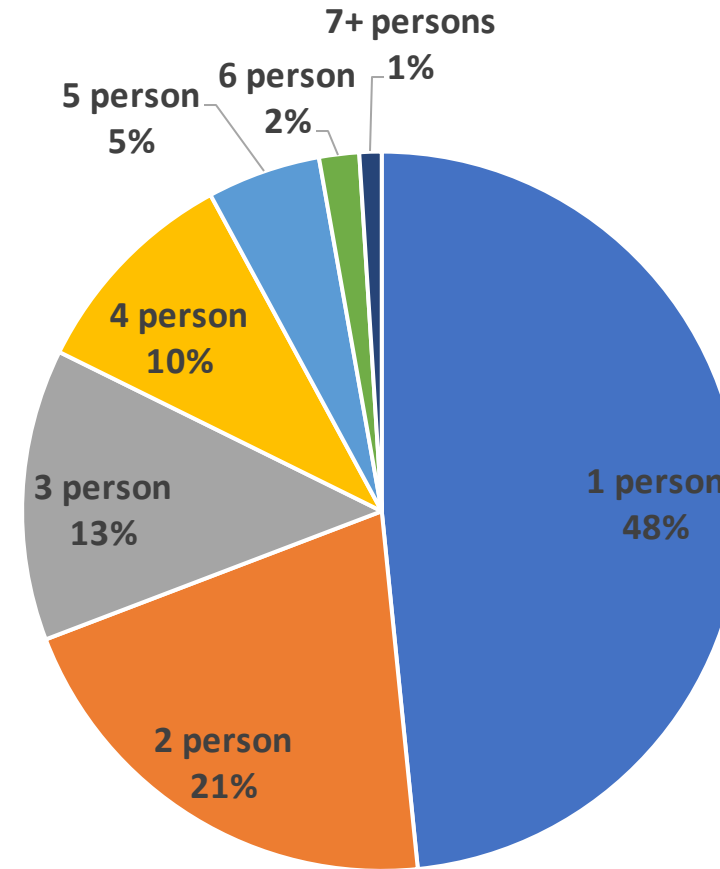


Ethnicity	Number of Persons	Percent of Persons
Hispanic or Latino	1,759	47.3%
Not Hispanic or Latino	1,956	52.7%
Total	3,715	100.0%



Number of Persons in Household

Household Size	Number of Households Served	Percent of Households Served
1 person	811	48.4%
2 person	348	20.8%
3 person	220	13.1%
4 person	164	9.8%
5 person	86	5.1%
6 person	31	1.8%
7 person	10	0.6%
8 person	4	0.2%
9 person	2	0.1%
10 person	1	0.1%
Total	1,677	100.0%
Median		2.13

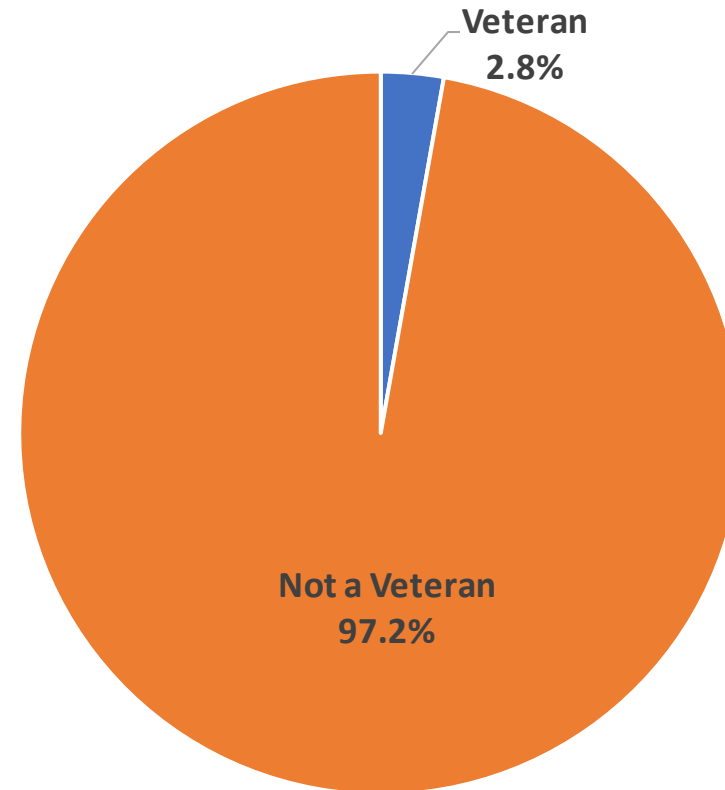


Source: RENT Program Data from HACA

Veteran Status

Veteran Status	Number of Persons	Percent of Persons
Veteran	105	2.8%
Not a Veteran	3,610	97.2%
Total	3,715	100.0%

Source: RENT Program Data from HACA



Disability Status

Disability Status	Number of Persons	Percentage of Persons
Disability	224	6.0%
No Disability	3,491	94.0%
Total	3,715	100.0%

Source: RENT Program Data from HACA

