



**Art in Public Places** | Cultural Arts Division | Economic Development Department

# **Women & Children's Shelter Renovations & Expansion AIPP Project**

***Artist Information Meeting & FAQ's  
December 17, 2014***



[www.austincreates.com](http://www.austincreates.com)

## AGENDA

### **Welcome, Introductions and Overview**

Anna Bradley, Art in Public Places Coordinator

### **Project Advisors**

Robin Camp - Public Works Department

Filip Gecic - Health & Human Services Department

Aaron Taylor – McKinney/York Architects

Catherine O'Connor - Co' Design Landscape Architecture

Stacy Schwarz - ASWC Director, The Salvation Army

Jan Gunter- Communications & community Relation Director , The Salvation Army

Jaime Castillo – AIPP Panel Liaison



## Austin Shelter for Women and Children

4523 Tannehill Road, Austin, TX 78721



Located on five acres of Travis County property leased to the City of Austin for a renewed 50 year lease.



City of Austin program and facility to give transitional assistance to women and children.

Two critical goals for the 2012 Bond Program:

- Addressing the most urgent repairs and safety upgrades
- Increasing shelter's bed capacity.



Operated by The Salvation Army, the facility includes

- a licensed child care center for children 18 mo. to 4 years;
- 20 bedrooms;
- accommodating up to 80 residents;
- a full service kitchen/dining area;
- computer learning center for adults and children;
- and a community garden.

## PROJECT OVERVIEW

- Funded from 2012 bonds
- McKinney/York Architects
- Renovations and expansion of the existing Austin Shelter for Women and Children (ASWC) will address the most urgent repairs, safety upgrades, and provide increase in housing family groups.
- The proposed expansion scenarios will offer three main benefits for the ASWC populations:
  - a safe place of respite for women and children;
  - a place of assistance for attaining and maintaining self-sufficiency;
  - and a natural setting that fosters awareness, healing, and growth.

# Women & Children's Shelter Renovations & Expansion Project



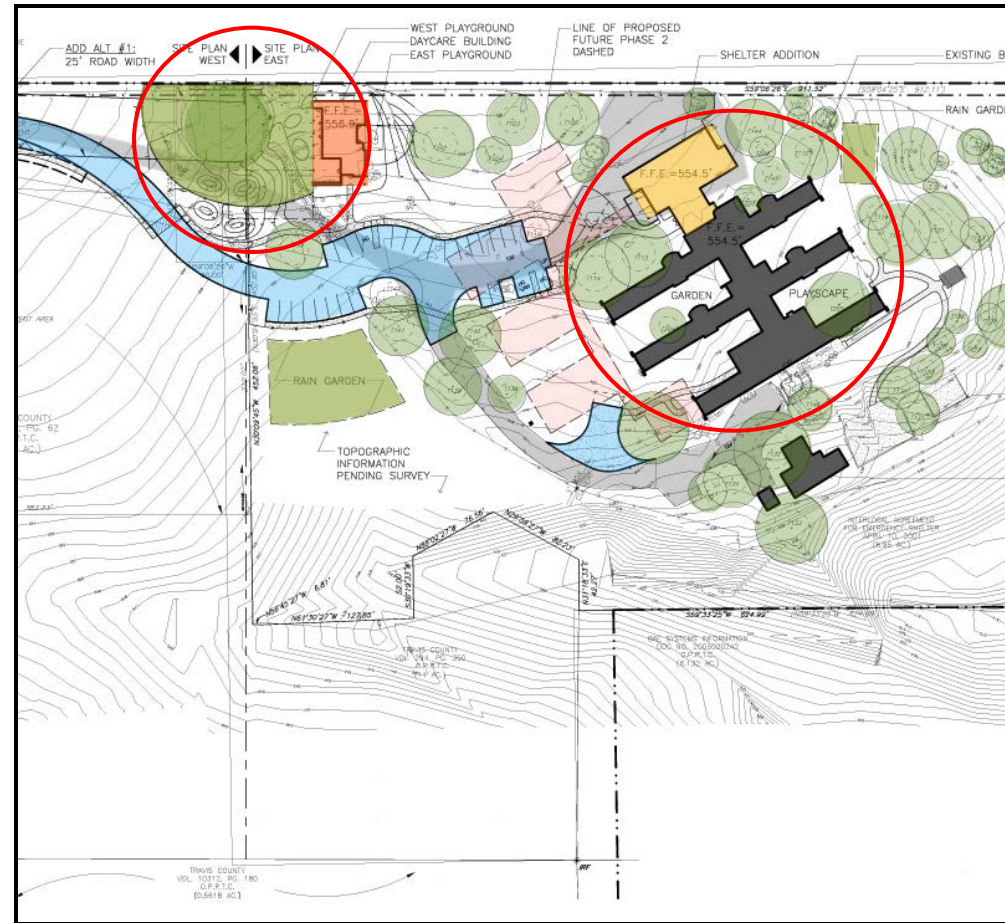
## Austin Shelter for Women and Children

4523 Tannehill Road, Austin, TX 78721



## Expansion will consist of the following:

- increased bed capacity and flexible room arrangements;
- relocation of the childcare facilities to a separate structure on the site;
- group bathroom with separate smaller stalls for increased privacy; and bathrooms for older boys
- generous common space adjacent to exterior covered porch;
- views to surrounding grounds; and
- new entrance lobby and circulation desk linking existing and new construction.



As part of the existing building renovations, a new **Daycare Building** will consist of the following:

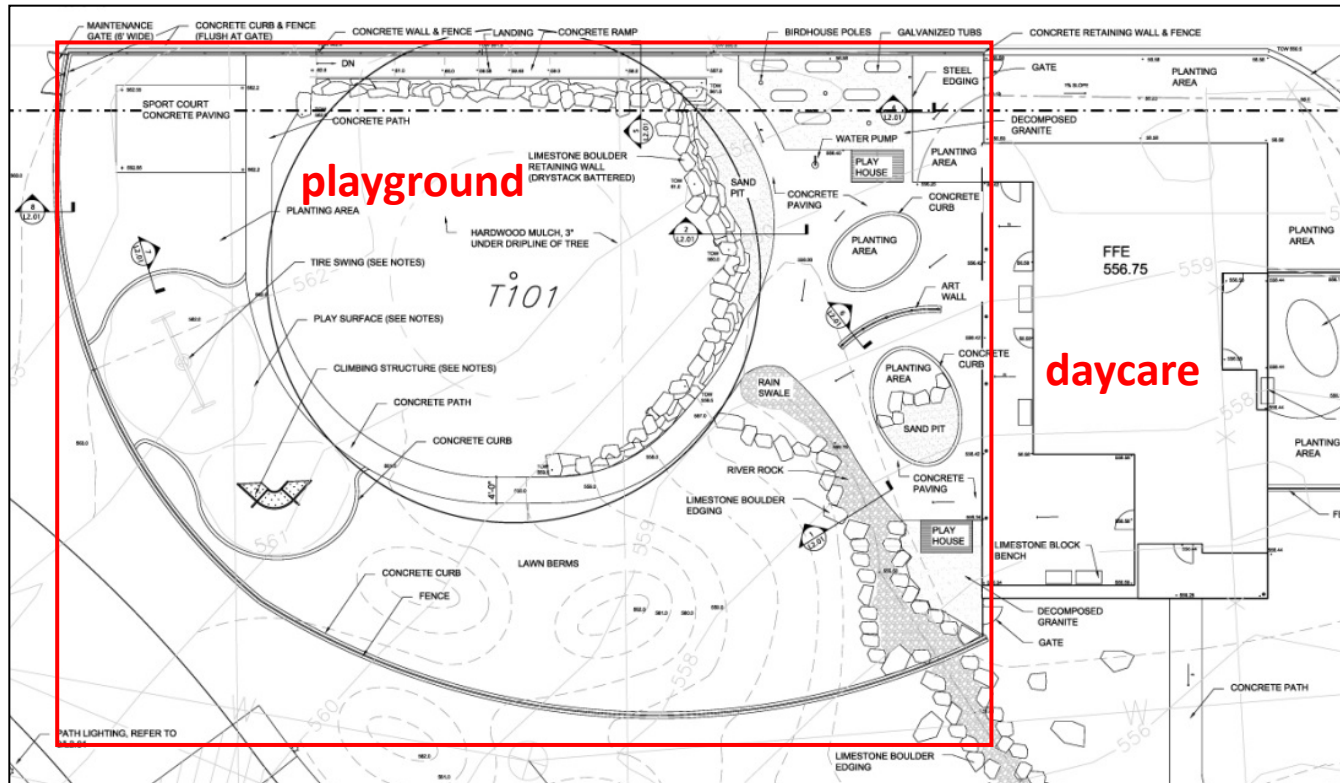
- increased number of rooms for different age groups – including new infant room (existing does not have infant care);
- ADA compliant children's bathroom;
- **new play areas integrated with existing mature live oak trees featuring “nature play” pedagogy (rocks, earth mounds, branches, sand, water, etc.) combined with traditional play devices;**
- generous exterior covered porches connected to play areas.



**View of the new daycare building looking north:  
The general form and material palette relates to the expansion portion of the project while the window arrangement offers a more playful variation of views for adults and small children.**

# Women & Children's Shelter Renovations & Expansion Project

## Artwork Opportunity:



The selected artist or artist team will work closely with the landscape architect to integrate the artwork(s) into the site.

The **playground** area will provide the selected artist or artist team with ample space to create an integrated, exterior artwork that contributes to elements such as **natural discovery learning, physical interaction, and sound and/or sensory exploration.**



# Women & Children's Shelter Renovations & Expansion Project



## Property Site

Entrance road to be relocated

Daycare and playground area



## Site Photos

Center tree in playground area



Main playground area

## Site Photos

Center tree in playground area

Facility entrance



## PROJECT GOALS

- to develop an artwork or series of artworks that provides or contributes to an exterior children's discovery area that **encourages sensory interaction**;
- to integrate the artwork into a natural setting that **fosters awareness, healing, and growth**;
- to **preserve a safe place of respite** for women and children; and
- to **consider the diverse community** served by the shelter including young children, teens and mothers as a place of assistance for attaining and maintaining self-sufficiency.

## EVALUATION CRITERIA

- artistic merit and technical expertise
- demonstrated successful, innovative and effective approach to public art projects of a similar scope
- ability to successfully execute a public art project on time and on budget
- expressed interest in creating artwork for the Austin Women and Children's Shelter and The Salvation Army

## BUDGET

The total award for an artist contract is  
**\$68,000.00** inclusive of:

- design
- fabrication
- installation
- permitting fees
- travel
- shipping
- Insurance
- contingency
- other project related costs

## ARTIST ELIGIBILITY

- Professional visual artists at least 18 years of age who live and work in **Texas** are eligible to apply.
- Full-time, permanent City of Austin employees including employees of the Health & Human Services Department and project consultants and their employees and sub-consultants are ineligible to apply.

A **professional visual artist** is defined as *“A practitioner in the visual arts with an original self-conceptualized body of work, generally recognized by critics and peers as a professional possessing serious intent and ability.”* Applications not meeting all eligibility criteria will be withdrawn from consideration.

## SUBMISSION REQUIREMENTS

**DEADLINE: 5:00pm (CDT), Thursday, January 8, 2015**

Applications submit on line via [www.PublicArtist.org](http://www.PublicArtist.org).

- **10 of 10 portfolio images**  
Artist teams must have each team member's work represented within the 10 images. All images **MUST** include materials, budget, client, location, and dimensions. Video submissions must be of kinetic work only in MP4, MOV or WMV format with maximum duration of 4 minutes.
- **Letter of Interest - 700 word limit**  
Briefly describe your specific interest in this Art in Public Places project and explain why your qualifications are a good fit for this project.
- **Up to 3 page professional resume**  
Maximum 3 pages for each team member
- **3 professional references**  
City of Austin Cultural Arts Division staff is not allowed



## Tentative Schedule

### **November 2014**

*Approval of Artist Selection Process by AIPP Panel and Austin Arts Commission*

### **November 18, 2014**

*Request for Qualifications (RFQ) released*

### **December 17, 2014**

*Project information meeting*

### **January 8, 2015**

*Deadline for RFQ submission*

### **January 21, 2015**

*Selection Committee review of submissions and selection of finalists for interview*

### **February 4, 2015**

*Finalist interviews, if needed*

### **March 2015**

*Approval of Artist and Alternate by AIPP Panel and Arts Commission  
(CIP Design phase ends)*

### **April 2015**

*Contract approval by City Council ;  
Negotiation and execution of artist contract;*

### **May 2015**

*Kick off meeting*

### **July 2015**

*Mid design review*

### **October 2015**

*Final design approval by AIPP Panel and Arts Commission;  
(CIP Construction Phase Starts)*

### **May 2016**

*Artwork installation*

### **April 2017**

*Anticipated CIP construction completion*

## SELECTION COMMITTEE

### **Selection Panel**

Sharon Engelstein – Public Artist, Houston, TX

Emily Cayton – Associate Educator for Teachers & Docents,  
The Contemporary Austin

Robert Mezquiti – Architect/Designer Studio Autoforma, LLC,  
Adjunct Faculty at University of Texas San Antonio

### **Project Advisors**

Robin Camp – Public Works Department, City of Austin

Filip Gecic – Health & Human Services Department, City of Austin

Aaron Taylor – McKinney York Architects

Catherine O'Connor – Co' Design Landscape Architecture

Stacy Schwarz – ASWC Director, The Salvation Army

Mitra Ekhtiar – ASWC Residential Services Director, The Salvation Army

Jan Gunter – Communications & community Relation Director , The Salvation Army

Jaime Castillo – AIPP Panel Liaison

## AIPP PANEL

### Visual Arts Professionals

**JAIME CASTILLO, CHAIR** - Artist, Independent Curator

**HOLLIS HAMMONDS, VICE CHAIR** - Assoc. Prof and Chair of Visual Studies,  
St. Edwards University

**JADE WALKER** - Artist + Gallery Director, Visual Arts Center at UT Austin

**CHRIS McCRAY** - Interior Designer

### Design Professionals

**ILSE FRANK** - Landscape Architect

**EMILY LITTLE** - Architect

### Arts Commission Liaison

**SCOTT DAIGLE** - Legislative Aide, Office of State Representative Donna Howard

# Women & Children's Shelter Renovations & Expansion Project



## APPLICATION PROCESS

[www.PublicArtist.org/AustinAIPP](http://www.PublicArtist.org/AustinAIPP)

[publicartist.org](http://publicartist.org)



The City of Austin's Art in Public Places (AIPP) program acquires and maintains works of art for City facilities through commissions, donations and loans for the cultural enrichment of the Austin community. AIPP is a program of the Cultural Arts Division within the City of Austin's Economic Development Department.

In 1985, the City of Austin became the first municipality in Texas to make a commitment to include works of art in construction projects. By ordinance, 2% of eligible capital improvement project budgets are allocated to commission or purchase art for that site. The AIPP Collection is found at sites such as the airport, convention center, libraries, parks, police stations, recreation centers, and streetscapes, enhancing public spaces for all residents and visitors to our City.



### Open Calls

Airport Entrance Project at Austin-Bergstrom International Airport - \$2,000,000 - Deadline: 9/30/2014

Terminal/Apron Expansion and Improvements Project at Austin-Bergstrom International Airport - \$1,000,000 - Deadline: 9/30/2014

## APPLICATION PROCESS

**publicartist.org**

Applying to calls is always free!

Life's easier with a Premium Membership.

**You've got creativity covered. Let us boost your productivity and efficiency.** Public Art is a numbers game; the more applications you submit, the more likely you are to get commissions. With an Artist Premium Membership you can quickly complete applications and **maximize your exposure**.

Artist Premium Memberships offer:

- Email notification of calls based on your preferences
- An unlimited online image library
- Automatic image resizing, renaming, and reordering
- Resume, Letter of Interest, Reference, Statement, and Biography management (easily customizable for each application)
- Download PDFs and JPGs of your information any time, for any purpose - via "Folios"

Sign up and get started with a free 30 day trial!

**Sign Up**

Email

Password

**Sign In**

[Forgot Password?](#)

**Sign up and get started  
with a free 30 day trial!**

**Sign Up**



"Like" us on Facebook to get special updates, offers, and news about public art!

For technical assistance: email [info@publicartist.org](mailto:info@publicartist.org)  
or call: 210-701-0775 (9am - 5pm CDT)

## QUESTIONS?

Contact:

Anna Bradley, AIPP Coordinator

[anna.bradley@austintexas.gov](mailto:anna.bradley@austintexas.gov)

or 512-974-7841

Questions and answers from this presentation  
will be posted on our website at:

[www.austintexas.gov/department/aipp-opportunities](http://www.austintexas.gov/department/aipp-opportunities)

## Frequently Asked Questions:

1. Will the outside of the tree drip line be paved?  
**Yes, 4' wide of concrete.**
2. Is there a desire to incorporate with the entrance gate as artwork?  
**Not the gate to the facility, but the daycare fence and gate could be addressed as the artwork.**
3. What is the age range of the kids at the facility?  
**The current age range is 18 months to 4 years, but the expanded facility will have a separate infant care area and may sometimes watch teens, but not specifically in daycare. Ages 6 and under are currently served at the daycare. The daycare may be used for therapy service to older kids.**
4. Any height for the climbing wall?  
**The climbing wall should be appropriated for ages 3-4 years old with no scaling or repelling. A fall zone must maintain 4' wide onto engineered wood fiber and be ADA compliant.**
5. Are there any restrictions to the artwork?  
**The artwork must be durable and low maintenance and comply with ADA accessibility. Artworks must meet playground safety standards as set forth in state law: The Consumer Safety Playground Standards.**
6. Will selected artist be able to site artwork?  
**Yes, the artist will work with the architect and landscape architect to integrate into the site and there is some flexibility in siting.**
7. What is the fence height that is defining the playground area?  
**The fence is 6'tall and may be made of wirework materials, no climbing will be allowed. Any artwork fencing created must meet anti climbing and security requirements and playground standards for safety.**
8. Can a 2-d artist be chosen?  
**We want the selected artist to conceptualize the artwork and work with the team (project team and perhaps sub-contractors) to design and develop an integrated artwork.**
9. What do facility "users" (the shelter clients) want?  
**There is no specific direction from the clients, but representatives from the Salvation Army, who runs the facility, are advisors on the project to help guide the facility's needs.**