



## Request for Qualifications

Project: Women and Children's Shelter Renovations and Expansion

Budget: \$68,000

Deadline: January 8, 2015, 5:00 pm

### Project Summary

The City of Austin Art in Public Places (AIPP) program of the Cultural Arts Division, Economic Development Department (EDD) seeks to commission a professional visual artist or artist team to design and fabricate artwork for the Austin Shelter for Women and Children (ASWC) located at 4523 Tannehill Lane in East Austin.

The City of Austin requests qualifications from professional visual artists who live and work in Texas. The total budget available for this project is \$68,000. The application deadline is **5:00 pm, Thursday, January 8, 2015**.

### Project Background

The Women and Children's Shelter Renovations and Expansion project includes renovations and expansion of the existing Austin Shelter for Women and Children to address the most urgent repairs, safety upgrades, and provide increase in housing family groups.

The proposed expansion scenarios strive to offer three main benefits for the Austin Shelter for Women and Children's populations: a safe place of respite for women and children; a place of assistance for attaining and maintaining self-sufficiency; and a natural setting that fosters awareness, healing, and growth.



Austin Shelter for Women and Children is funded by the City of Austin and is operated by the Salvation Army and located on five acres of property which is owned by Travis County with a newly executed lease to the city of Austin for 50 years. The shelter has the capacity of 60 beds (54 women with children and six single women). The facility includes a licensed child care center for children 18 month to 4 years, 20 bedrooms, a full service kitchen/dining area, computer learning center for adults and children, and a community garden. The ASWC strives to provide wrap-around services (case management, child/family therapy, employment assistance, life skills, training and child care) in an effort to help clients move from crisis to stability.

During and average stay of approximately 90 days, clients work on plans to acquire permanent housing and increase their skills and income. Many are linked to rapid rehousing, transitional and permanent

housing opportunities through The Salvation Army's collaborative initiatives such as the Passages Program. ASWC staff provided follow-up case management in these cases for 6 to 18 months after participants are housed. The ASWC has a highly qualified staff of social work, counseling and educational professionals who work as an interdisciplinary team. The focus on trauma-informed services, health/wellness, and connection of mainstream housing and employment resources contribute to the successful percentage of exits to safe and stable housing.

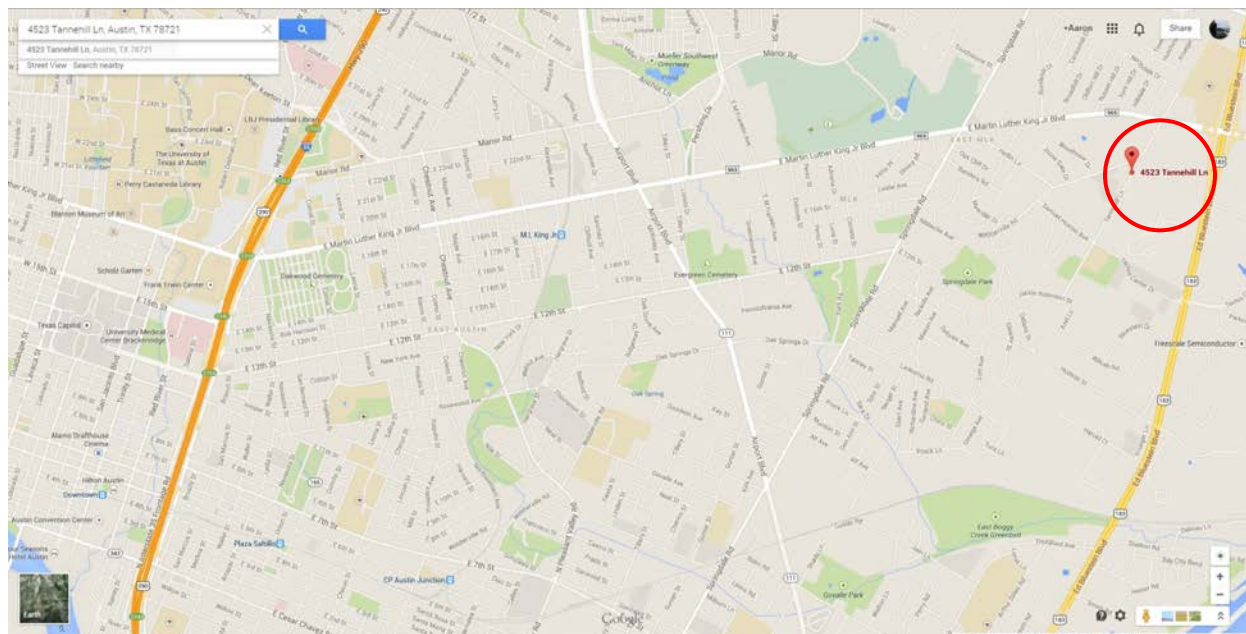
<http://www.salvationarmytexas.org/austin/housing/>.



**Austin / Travis County tuberculosis sanatorium - 1939**

It was the former location of the Austin /Travis County tuberculosis sanatorium. At that time, the facility was in a rural area for health safety reasons and contemporary treatment. Since then, the city has gradually expanded and the location now, at the intersection of 183 and MLK Blvd, offers resources to public transportation connectivity. The existing structure was built in 1939 and has undergone several reconstructions with the latest one being done in the mid 1990's.

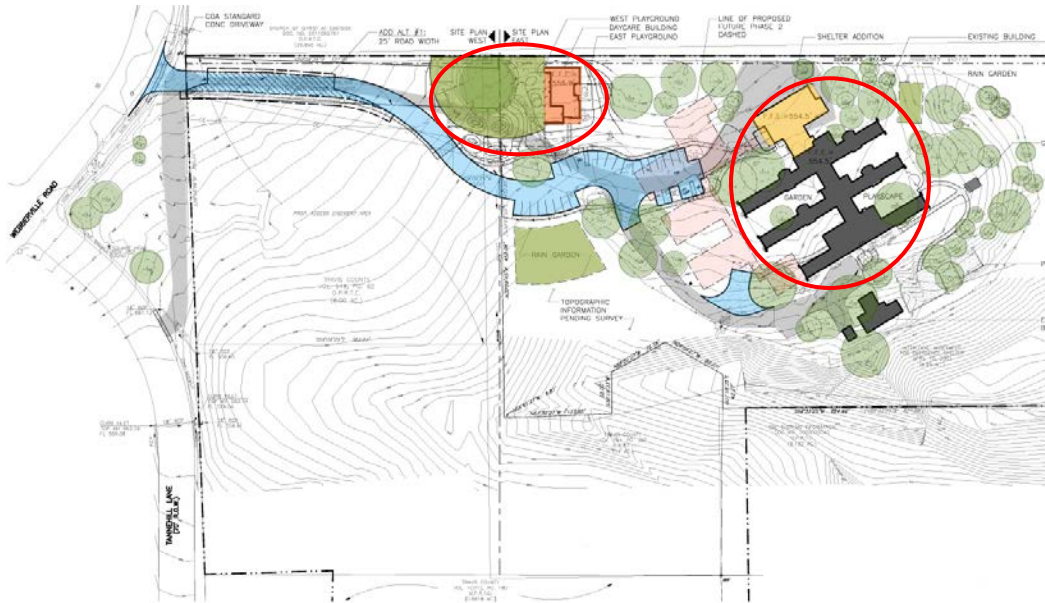
McKinney York Architects have designed the new facility, and construction is scheduled to begin in October 2015. The anticipated project substantial completion date is April 2017. The facility will remain open to service clients throughout the new construction and renovations.



**Women and Children's Shelter located at 4523 Tannehill Lane, Austin, TX 78721**

## Women and Children's Shelter Renovations and Expansion

Expansion will consist of the following: increased bed capacity and flexible room arrangements; relocation of the childcare facilities to a separate structure on the site; group bathroom with separate smaller stalls for increased privacy; addition of a gender specific bathroom for families with older boys (ADA compliant upgrade); generous common space adjacent to exterior covered porch; views to surrounding grounds; and a new entrance lobby and circulation desk linking existing and new construction.



**View of main entry looking southeast: The sloped form of the roof clerestory echoes the shape of the existing building roof, recalls iconic forms relating to the idea of shelter, and brings light from above into the main shared spaces (living room and main bathroom).**



## Public Art Intent & Goals

The Art in Public Places program seeks to commission works of art of redeeming quality that advance public understanding of visual art and enhance the aesthetic quality of public places through the selection of a qualified artist who can innovatively and thoughtfully design within the context of this project. For the Women and Children's Shelter Renovations and Expansion project, the AIPP program seeks to commission a contemporary work of art that complements the healing aspects of the shelter.

The goals of this specific public art project are:

- » to develop an artwork or series of artworks that provides or contributes to an exterior children's discovery area that encourages sensory interaction ;
- » to integrate the artwork into a natural setting that fosters awareness, healing, and growth;
- » to preserve a safe place of respite for women and children;
- » to consider the diverse community served by the shelter including young children, teens and mothers as a place of assistance for attaining and maintaining self-sufficiency; and
- » low maintenance, durable, and safe for children 18 months to 12 years old.

## Budget

The funds for this project are derived from the 2% for public art portion of the City of Austin's contribution to the estimated construction budget. The total award for an artist contract is \$68,000, inclusive of design, fabrication and installation, including permitting fees, travel and shipping expenses, insurance and other project related costs.

## Artwork Opportunity

As part of the existing building renovations, a new Daycare Building will consist of the following: increased number of rooms for different age groups – including new infant room (existing does not have infant care); ADA compliant children's bathroom; new play areas integrated with existing mature live oak trees featuring "nature play" pedagogy (rocks, earth mounds, branches, sand, water, etc.) combined with traditional play devices; generous exterior covered porches connected to play areas.

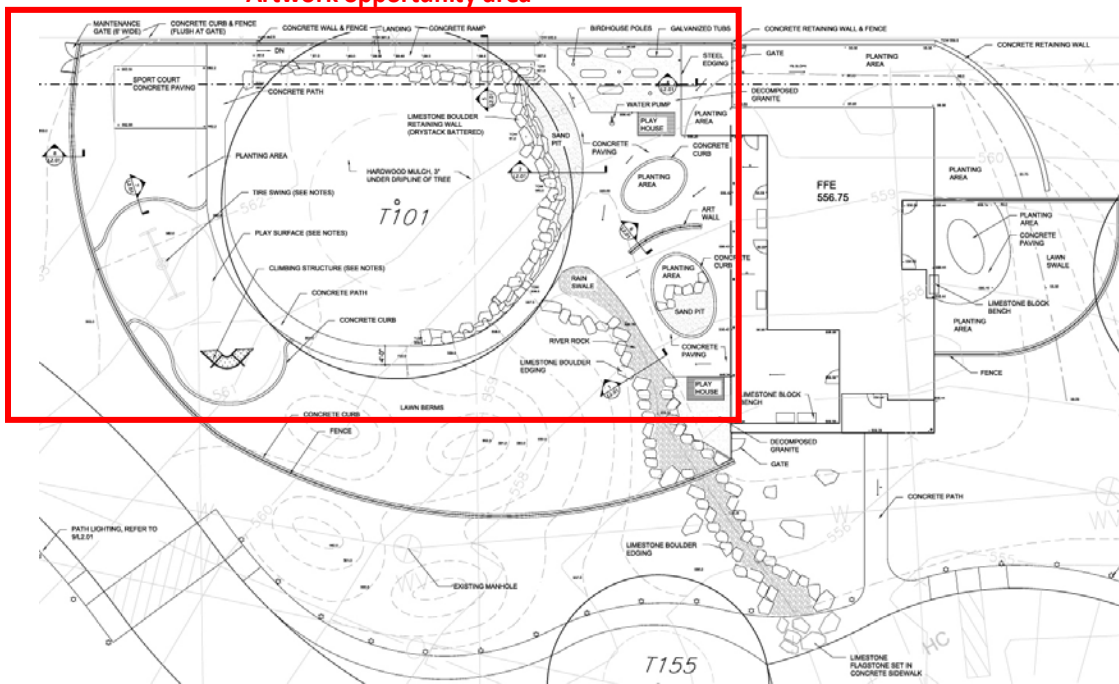
The playground area will provide the selected artist or artist team with ample space to create an integrated, exterior artwork that contributes to elements such as natural discovery learning, physical interaction, and sound and/or sensory exploration. The selected artist or artist team will work closely with the landscape architect to integrate the artwork(s) into the site.





**View of the new daycare building looking north: The general form and material palette relates to the expansion portion of the project while the window arrangement offers a more playful variation of views for adults and small children.**

### Artwork opportunity area



**Site plan: new daycare facility and playground area that will service shelter and general public clients.**

## Artist Eligibility

Professional visual artists at least 18 years of age who live and work in Texas are eligible to apply.

Full-time, permanent City of Austin employees including employees of the Health and Human Services Department and the Economic Development Department, and project consultants and their employees and sub-consultants are ineligible to apply.

## Evaluation Criteria

The selection of an artist, or artist team, shall be based on whose qualifications best meet the requirements contained in this Prospectus.

In addition to the standard AIPP project selection criteria found on the City of Austin's Art in Public Places website ([www.austintexas.gov/aipp/selectioncriteria.htm](http://www.austintexas.gov/aipp/selectioncriteria.htm)), the Selection Panel will review and consider the following evaluation criteria:

- » artistic merit and technical expertise;
- » demonstrated successful, innovative and effective approach to public art projects of a similar scope;
- » ability to successfully execute a public art project; and
- » expressed interest in creating artwork for the Women and Children's Shelter Renovation and Expansion project and The Salvation Army.

## Selection Process

**Applications must be received online via [www.PublicArtist.org](http://www.PublicArtist.org)** no later than 5:00 pm (CDT) on January 8, 2015. For technical assistance with your application, please contact [info@publicartist.org](mailto:info@publicartist.org) or 210-701-0775 (9:00 am – 5:00 pm CDT).

A Request for Qualifications will be solicited from professional visual artists who live and work in Texas. The City of Austin Art in Public Places Panel will convene a selection panel to evaluate the submissions. Up to three finalists may be selected for interviews. The selection panel shall review qualifications (images of work, resume, letter of interest, references) and select one artist and one alternate. This recommendation will be presented to the Art in Public Places Panel and Arts Commission for approval. The contract will require authorization from City Council prior to negotiation and execution.

## Selection Committee (Selection Panel & Project Advisors)

A 3 member selection panel shall be selected that includes at least 1 visual artist. Possible selection panel members include:

- » Sharon Engelstein - visual artist, Houston, TX
- » Robert Gay or Lucy Begg, The Though Barn – visual artists, Austin, TX
- » Paula Suchland – Environmental Education Coordinator at Foundation Communities, Austin, TX
- » Sunshine Mathon, M. Arch – Design and Development Director at Foundation Communities, Austin, TX

- » Emily Cayton – The Contemporary, Austin, TX

Project advisors will be invited to participate in the process to provide assistance and expertise to the selection panel. The project advisors to the panel may include:

- » Robin Camp - Project Manager, Public Work Department, City of Austin
- » Filip Gecic - Health and Human Services Department, City of Austin
- » Catherine O'Connor - Co'Design Landscape Architecture
- » Al York - McKinney York Architects
- » Stacy Schwarz – ASWC Director, The Salvation Army

No gallery owner, dealer, or art agent may serve as a juror due to the potential for conflict of interest. No juror may serve more than once in any two-year period in an attempt to bring a diversity of interests to the selection process and to more precisely match the expertise of the jury members to each project.

## Tentative Schedule

### *November 2014*

*Approval of Artist Selection Process by AIPP Panel and Austin Arts Commission*

### *November 19, 2014*

*Request for Qualifications (RFQ) released*

### *December 17, 2014*

*Project information meeting*

### *January 8, 2015*

*Deadline for RFQ submission*

### *January 19, 2015*

*Selection Committee review of submissions and selection of finalists for interview*

### *January 27, 2015*

*Finalist interviews, if needed*

### *February 2015*

*Approval of Artist and Alternate by AIPP Panel and Arts Commission*

### *March 2015*

*Contract approval by City Council ; Negotiation and execution of artist contract; (CIP Design phase ends)*

### *April 2015*

*Kick off meeting*

### *July 2015*

*Mid design review*

*October 2015*

*Final design approval by AIPP Panel and Arts Commission; (CIP Construction Phase Starts)*

*May 2016*

*Artwork installation*

*April 2017*

*Anticipated construction substantial completion*