



# Bond Election Advisory Taskforce Reinvestment in Facilities and Assets Working Group

---

John Daniels  
Facility Planning Manager  
Police Department  
08/25/2017



AUSTIN  
POLICE  
DEPARTMENT

# 2

## Outline

- APD Statistics
- CIP Overview
- 2018 Bond Proposal
- Prioritization
- Program Details



AUSTIN  
POLICE  
DEPARTMENT



# 3 Who We Are!

**3**  
Police Stations

**4**  
Satellite Offices



**1,908**  
Sworn  
FTEs

&

**732.25**  
Civilian  
FTEs



**22**  
Canines

**14**  
Mounted  
Unit  
Horses

**1,206**  
Fleet  
Maintained  
Items



**784**  
Boat  
Safety  
Checks



**937,000**  
Population  
Served

## POLICE PATROL, INVESTIGATIONS, & ENFORCEMENT

**143,173**  
Violations  
Issued  

---

**5,640**  
DWI Arrests  

---

**1,596**  
Metro Tactical  
Arrests  

---

**47,078**  
Total Arrests

**572,303**  
Incidents  
Responded  
to by Patrol  
Officers  
  
**51,921**  
Detective  
Cases  
Investigated

**Part 1 Investigations**  
**33,902**  
Property  
Crimes  
  
**3,745**  
Violent  
Crimes  
  
**Part 1 Cleared**  
**4,319**  
Property  
Crimes  
  
**1,900**  
Violent  
Crimes

**1,581**  
Special  
Operations  
Responses  
  
**1,658**  
Special  
Events

**1,031,276**  
9-1-1 Calls  
Received  

---

**346,473**  
Calls  
Dispatched  

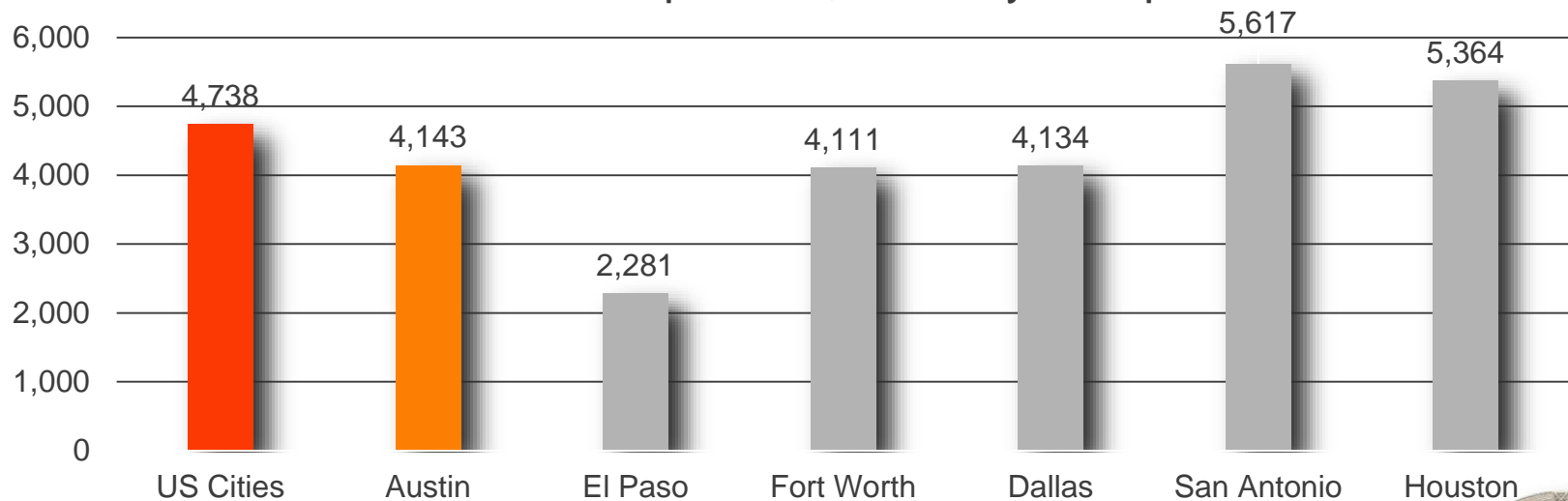
---

**87,251**  
Emergency &  
Urgent Calls



# 4 Compared to Other Cities

### Total Crime Rate per 100,000: City Comparison



This chart shows how Austin compares to large US cities (those with populations between 500,000 and 999,999; Austin's 2015 population was estimated at 938,728). For regional comparison, Texas cities are also identified; Houston is the only Texas city not included in the US city averages because its population exceeds the range.

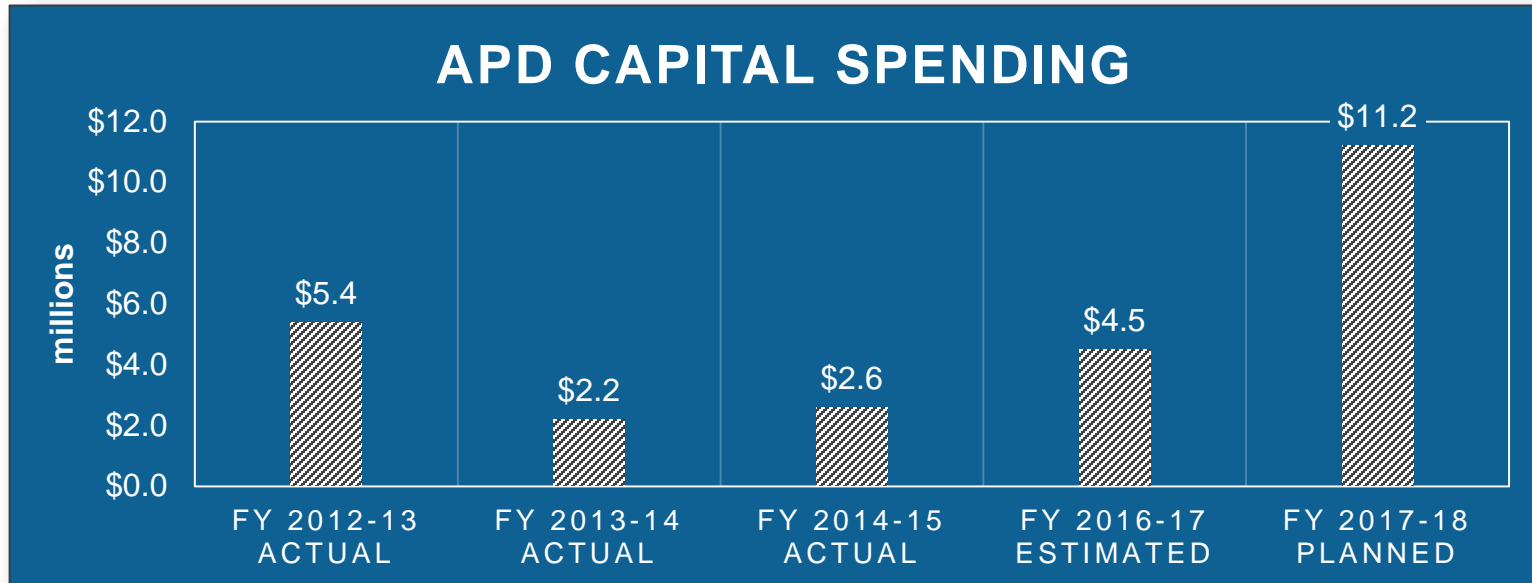
Austin's 2015 rate of 4,143 offenses per 100,000 was 13% lower than the average rate of 4,738 for all large US Cities.



**AUSTIN**  
POLICE  
DEPARTMENT



# 5 APD Capital Program Overview



- APD Capital Funding Sources
  - 2012 G.O. BONDS PROP 16: Public Safety



AUSTIN  
POLICE  
DEPARTMENT

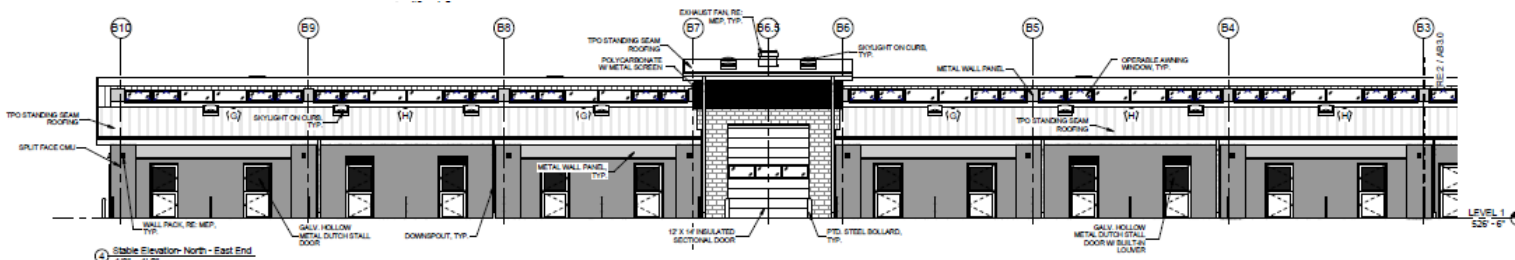
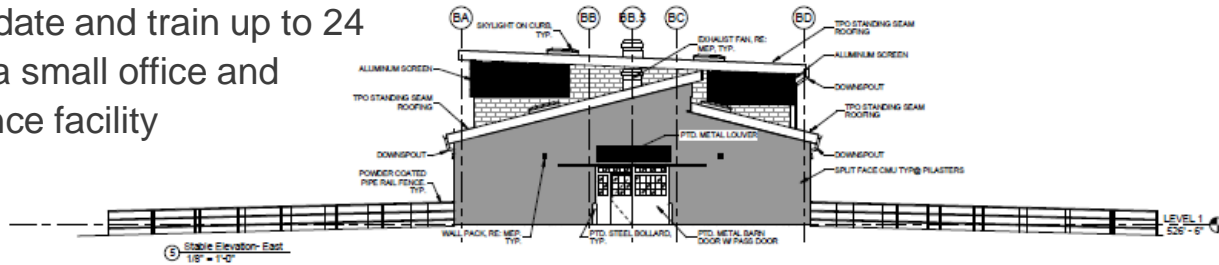


# 6

## 2012 G.O. Bond – Project Highlights

### Mounted Patrol Facility

- \$6.9M project budget
- Scope: Includes the development of a training facility for the Mounted Patrol Unit
- The facility is programmed to accommodate and train up to 24 horses/w a small office and maintenance facility

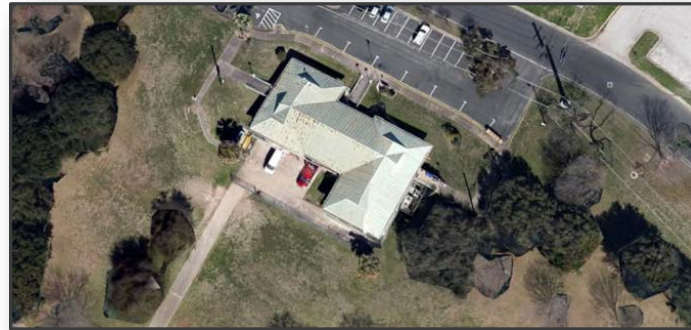


AUSTIN  
POLICE  
DEPARTMENT





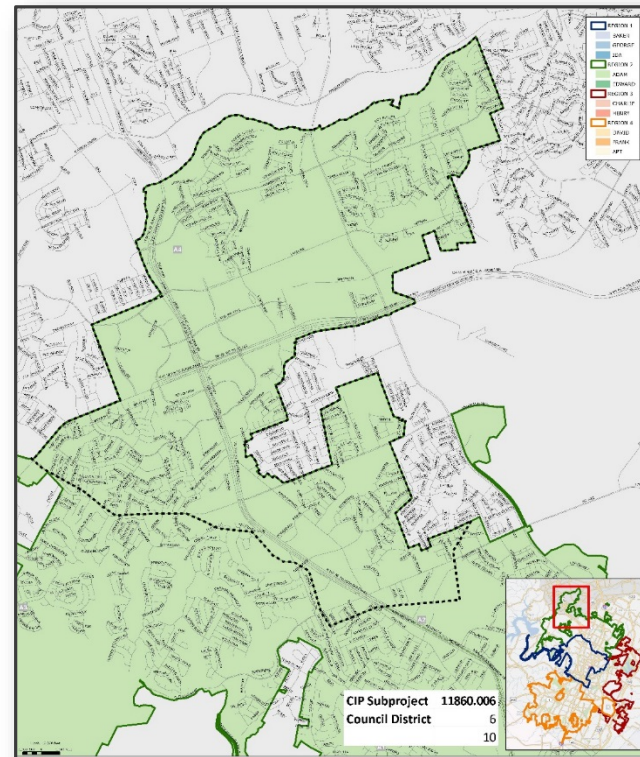
- **Park Patrol / PARD joint use facility**
  - \$8.3M project budget
  - Scope: Includes the renovation and replacement of the existing Nash Hernandez Bldg.
  - The facility is programmed to provide accommodations for policing services in the Central Parks Corridor





- **Site Acquisition Region 2, Adam Sector**

- \$5.8M project budget
- Scope: Includes the purchase of real property, land planning, architecture and engineering design of a Police Substation.



AUSTIN  
POLICE  
DEPARTMENT





# 9 2018 G.O. Bond – Proposal

## Reinvestment in Facilities and Assets

Department	Amount
Parks & Recreation	\$120 Million
Library	\$20 Million
Austin Public Health	\$10 Million
Public Safety	\$90 Million
<b>Total</b>	<b>\$240 Million</b>



- Austin Police - \$8 million
  - o Air Operations Facility



AUSTIN  
POLICE  
DEPARTMENT



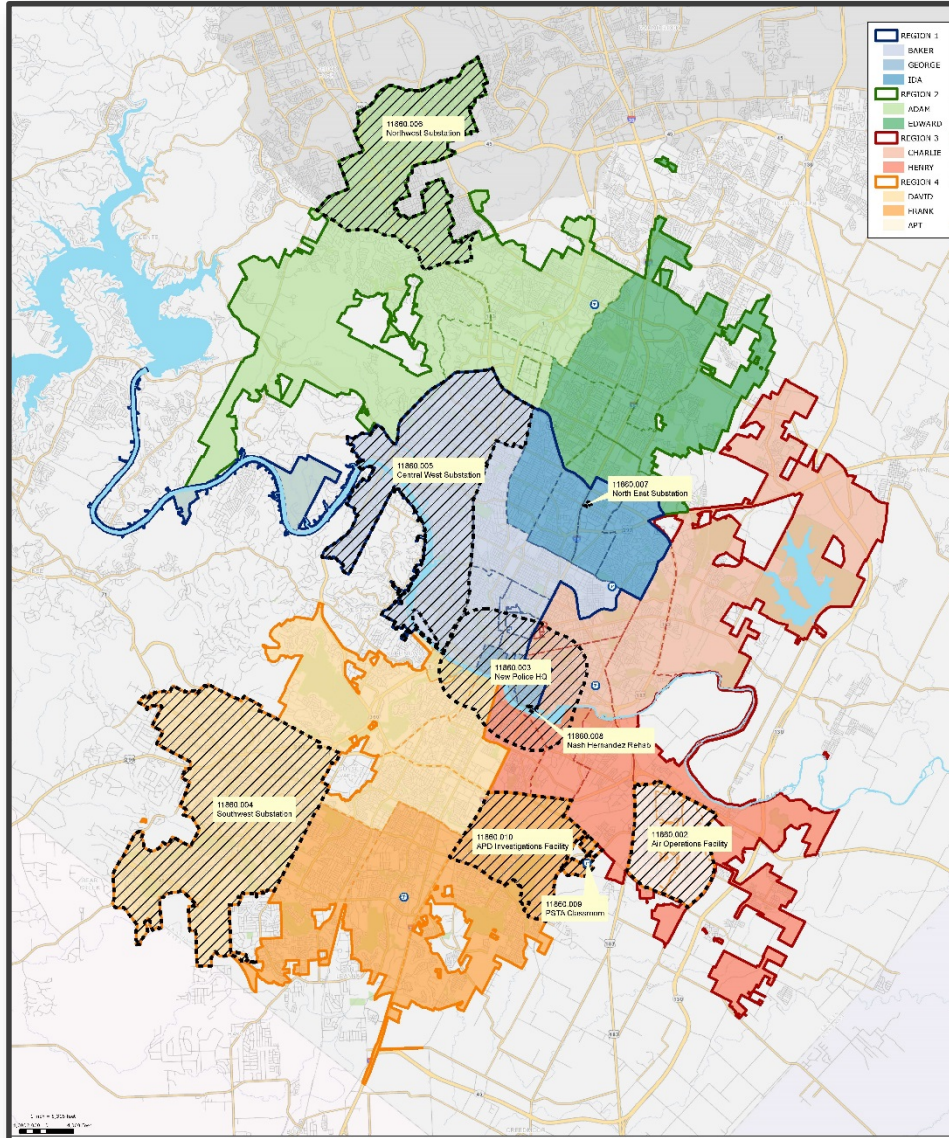
# 10 Prioritization Approach to CIP Program

- **Projected Population by Region & Sector (Service Area)**
  - Strategic deployment of resources
  
- **Crime Rates & Calls for service**
  - Maintain target response time to emergency and urgent calls
  - Improve resident's satisfaction with service delivery and perceptions of public safety
  
- **Index Crime & Arrest**
  
- **Police Service Projections**
  - Reduce the violent and property crime rate
  - Reduce traffic fatality rate
  
- **Site Selection – Process and Criteria**
  - Imagine Austin Comprehensive Master Plan
  - City of Austin Long-Range CIP Strategic Plan
  - IACP Police Facility Planning Guidelines
  - 5 Yr. Implementation Cycle



AUSTIN  
POLICE  
DEPARTMENT

# Overall Map – Proposed CIP Investments



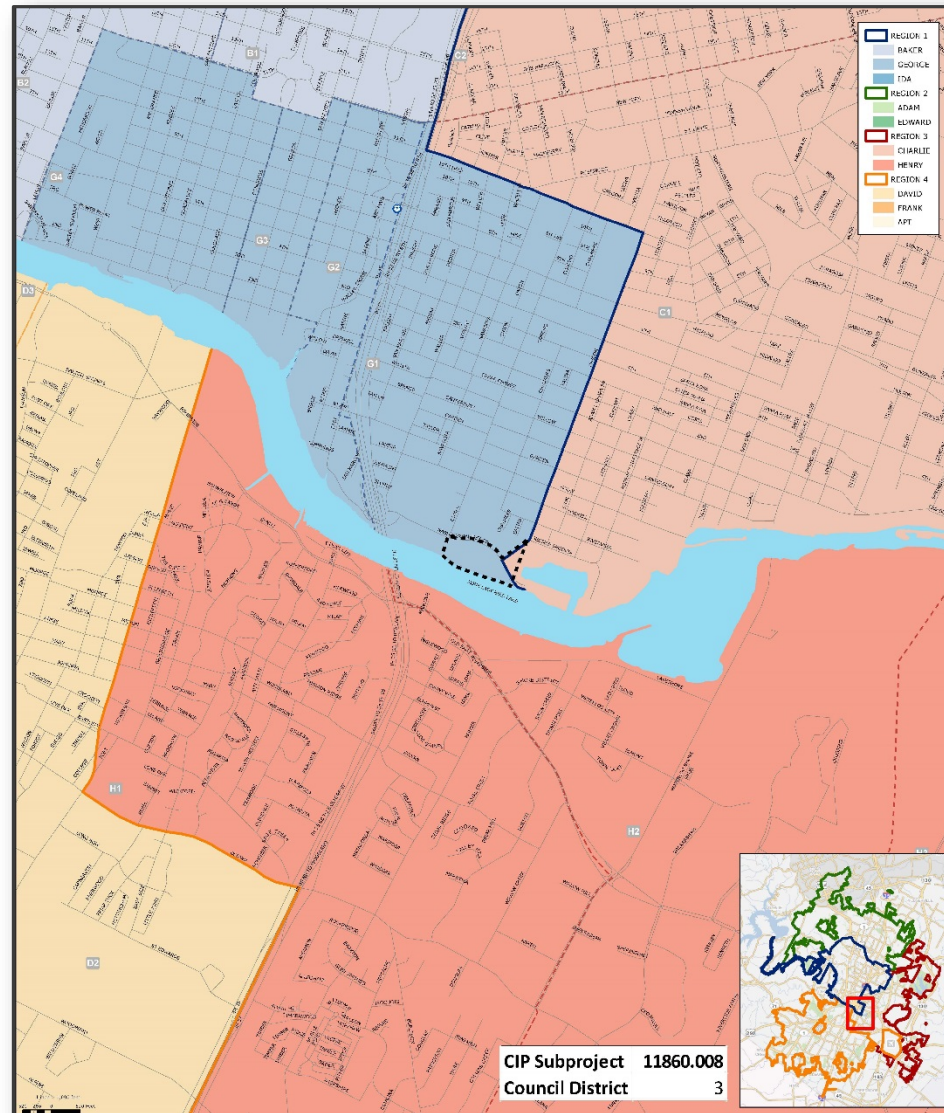
AUSTIN  
POLICE  
DEPARTMENT



# Facility Reinvestment – Park Patrol / PARD joint use facility



- \$6.3million
- Provide police services to the central parks corridor
- Who will benefit
  - City-wide
  - Strategic deployment of resources
  - Improve residents satisfaction with service delivery and perceptions of public safety



AUSTIN  
POLICE  
DEPARTMENT



13

# Facility Reinvestment – Park Patrol / PARD joint use facility



AUSTIN  
POLICE  
DEPARTMENT

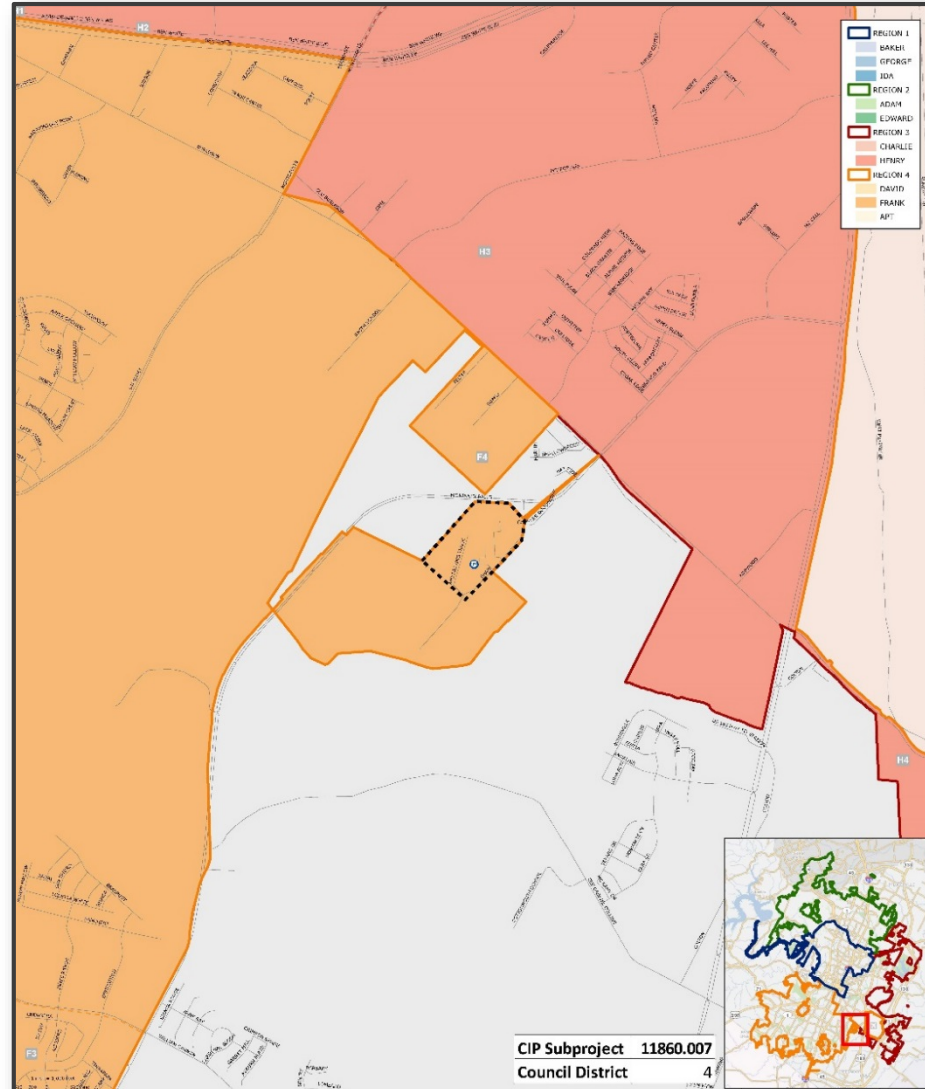




# 14

## Facility Reinvestment – PSTA Classroom 3<sup>rd</sup> Floor Addition

- \$7.7million
- 25,000 sf addition to the existing PSTA classroom Bldg.
- Who will benefit
  - City-wide
- Project Examples:
  - PSTA Campus



AUSTIN  
POLICE  
DEPARTMENT



15

# Facility Reinvestment – PSTA Classroom 3<sup>rd</sup> Floor Addition



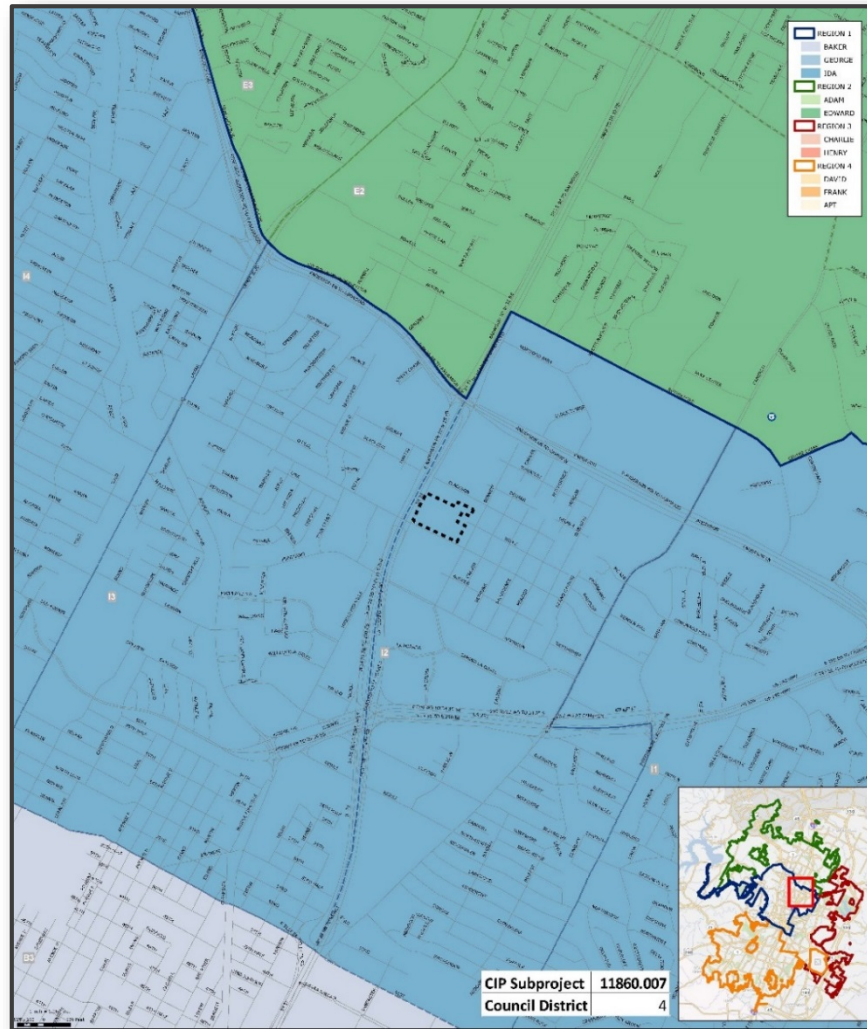
AUSTIN  
POLICE  
DEPARTMENT



# Assets Reinvestment – NE Substation; Region 1, Ida Sector



- \$16.7 million
- Substation to provide police services to the NE Quadrant of the City
- Who will benefit
  - City wide
  - Strategic deployment of resources
  - Crime rates and calls for service
- Project Examples:
  - East Substation
  - North Substation
  - South Substation



AUSTIN  
POLICE  
DEPARTMENT

# Assets Reinvestment – NE Substation; Region 1, Ida Sector



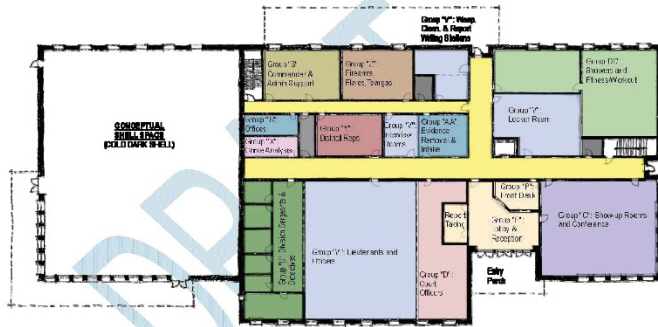
### Option 02 – Substation Rendering from Street



Conceptual architectural drawings intended for concept 'test fit' purposes only. Not intended to direct final design.



### Option 02 – Substation Floor Plan



Conceptual architectural drawings intended for concept 'test fit' purposes only. Not intended to direct final design.



AUSTIN  
POLICE  
DEPARTMENT

# Questions?



John Daniels  
Facility Planning Manager  
Austin Police Department  
[john.daniels@austintexas.gov](mailto:john.daniels@austintexas.gov)  
512.974.6980



AUSTIN  
POLICE  
DEPARTMENT