



St. Edwards Park

2018 Bond Election Advisory Task Force: Parkland and Open Space Working Group

Parkland Acquisition Priorities

August 23, 2017



Presentation Overview

- Current status of greenbelt protection
- Greenbelt priorities
- Infill park needs
- Destination park needs
- Bond program acquisition scenarios

Greenbelt Acquisition Priorities

Southern

Bear Creek

Little Bear Creek

Onion Creek

Slaughter Creek

South Boggy Creek

Williamson Creek

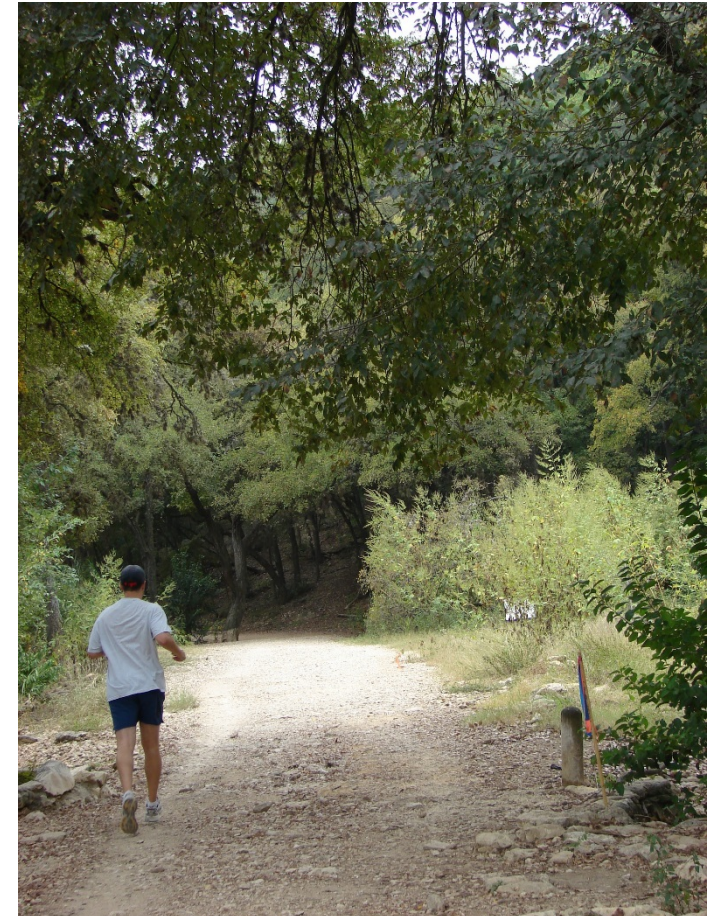
Colorado River

Northern

Bull Creek

Shoal Creek

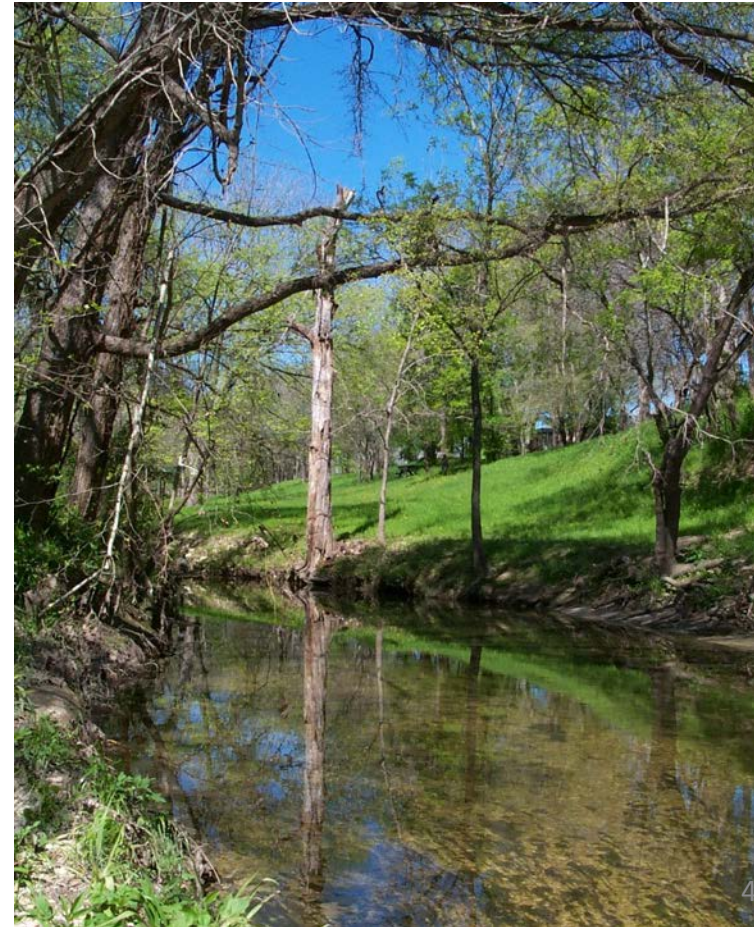
Walnut Creek



Shoal Creek Trail

Greenbelt Acquisition Criteria

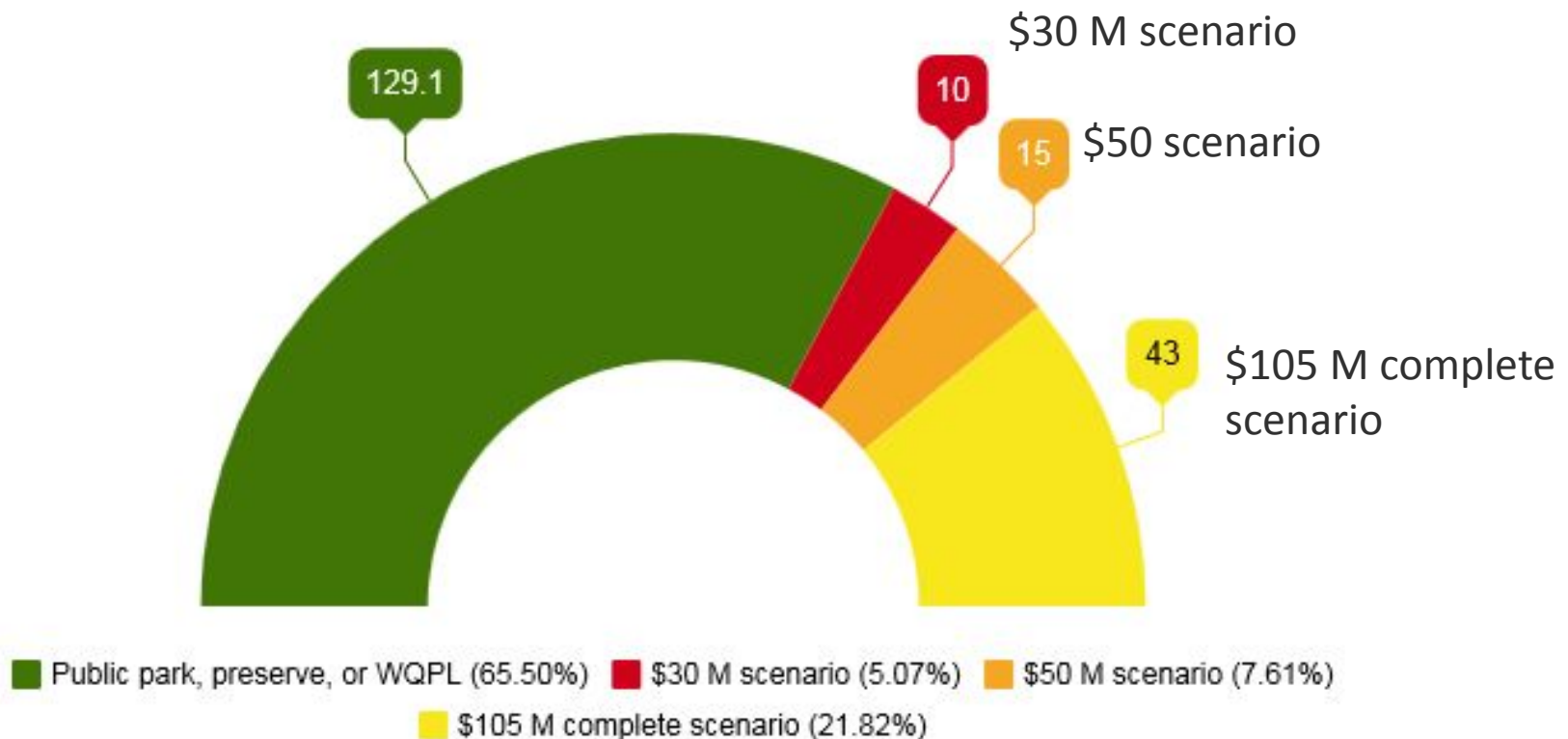
- Critical connection to existing park
- Development pressure
- Scenic value
- Opportunity to partner with developer or WPD
- Willing seller



Williamson Creek

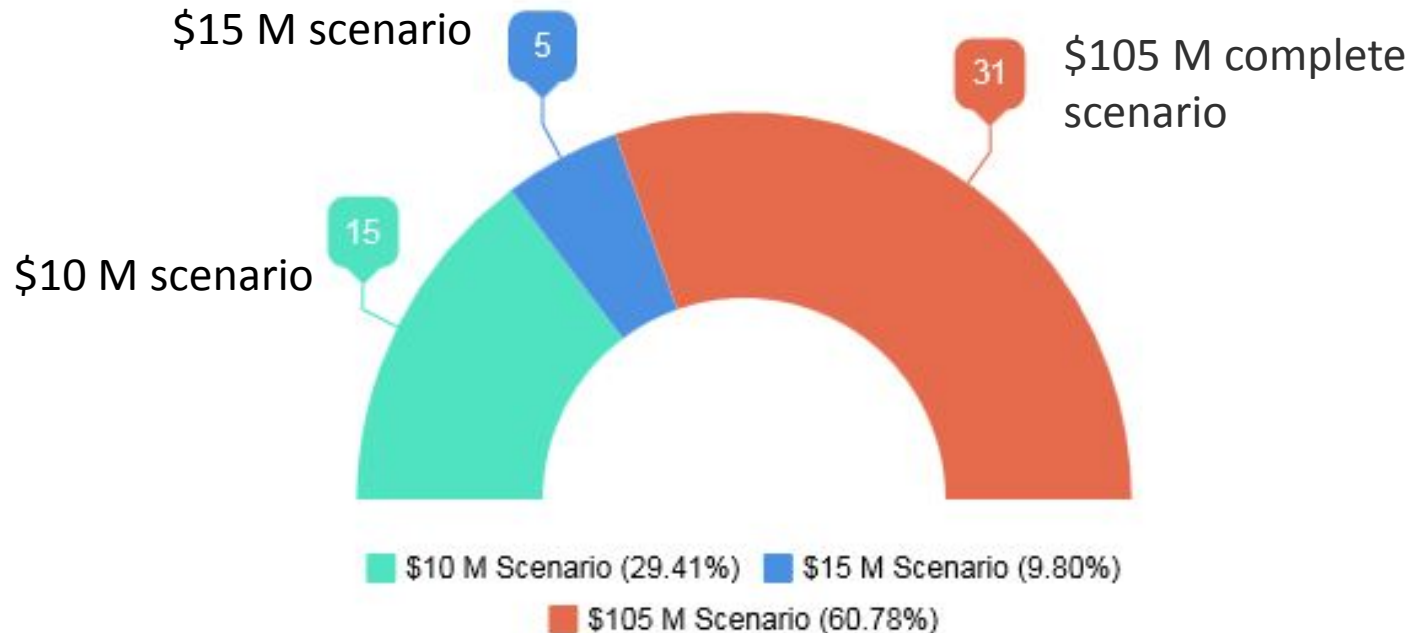
Nearly 2/3 of *priority* creek miles are protected by public lands

Protection of Priority Creeks (197 miles total)



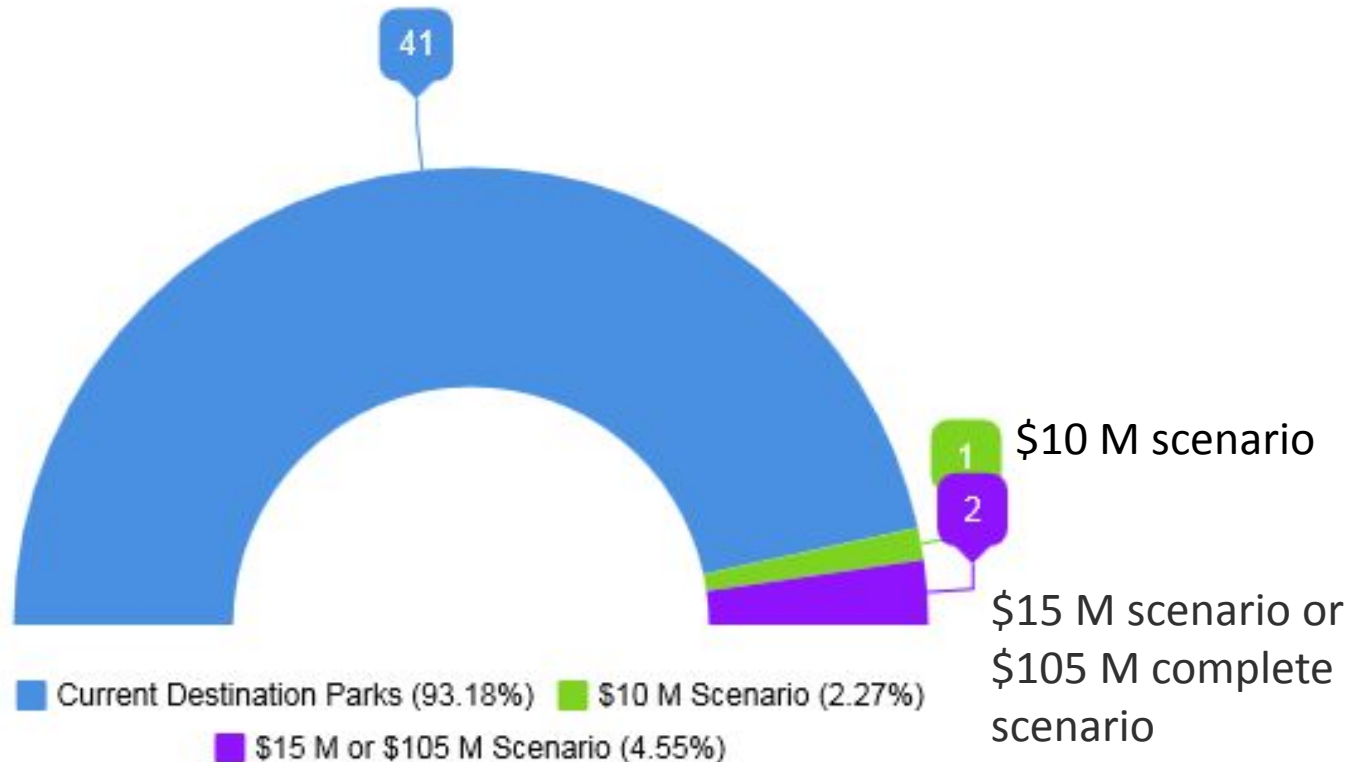
51 more infill parks are needed to serve nearly all Austin residents within walking distance

Infill Park Needs (51 Parks Total)



3 more destination parks are needed

Destination Park Needs (44 Total)



\$30 Million Proposal for Parkland Acquisition

\$30 Million for:

- Destination park in Oak Hill
- 15 Infill parks
- 10 miles of greenbelts



Mary Moore Searight Metropolitan Park

If parkland acquisition were increased to \$50 Million ...

These acquisitions could be added:

- Destination Park in North Austin
- Destination Park in Central Austin
- 5 more infill parks (20 total)
- 5 more miles of greenbelt (15 total)



Roy G. Guerrero Colorado River Park

If parkland acquisition were increased to \$105 Million ...

These acquisitions could be added:

- Destination Park in North Austin
- Destination Park in Central Austin
- 36 more infill parks (51 total)
- 58 more miles of greenbelt (68 total)



Gus Garcia District Park

What is the total park need today?

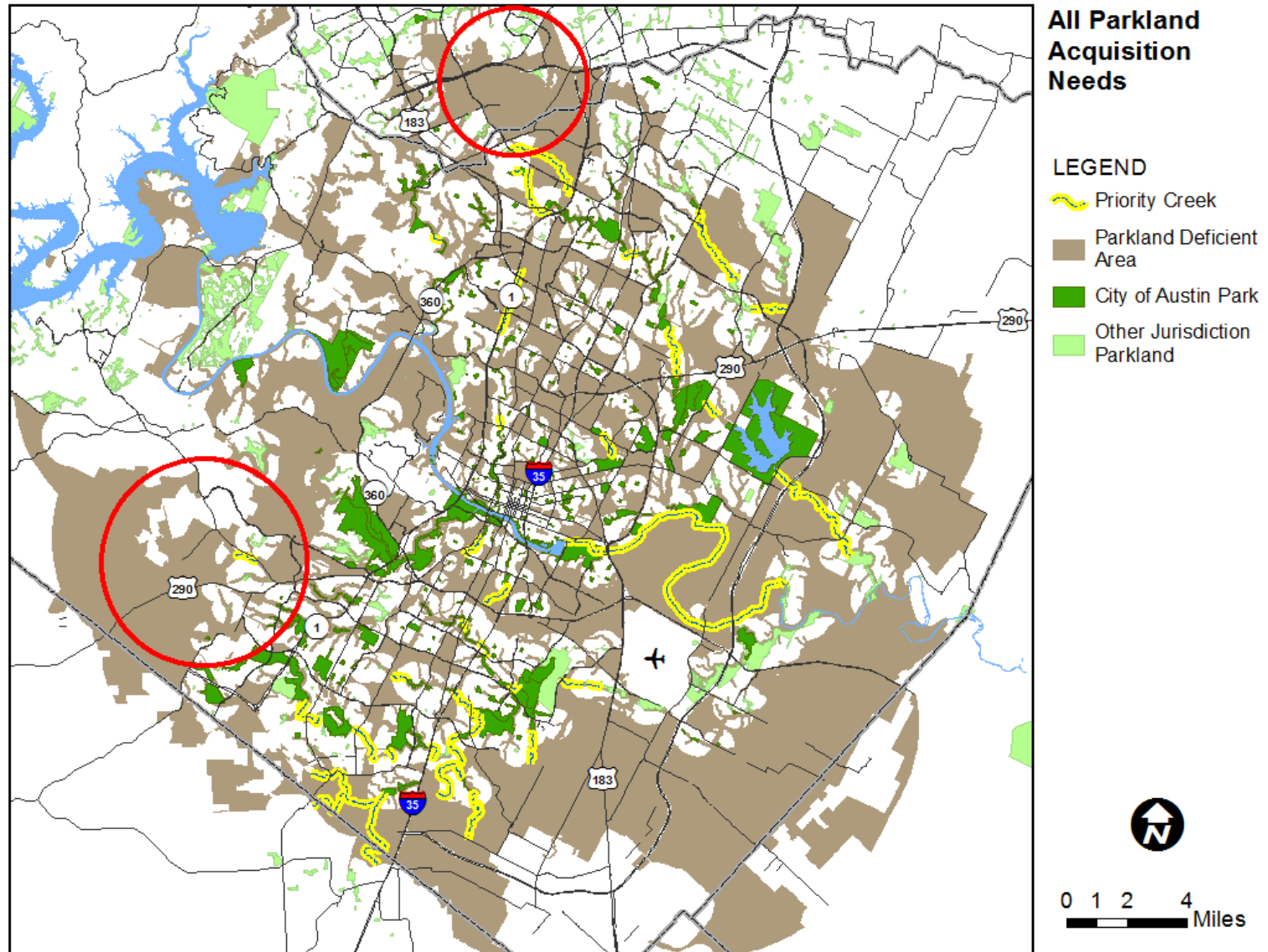
With \$105 Million, all current land acquisition needs would be met:

- Virtually all city residents would live within walking distance of a park
- All critical gaps in greenbelts would be filled
- Three more destination parks would be available



*Tom Lasseter-South Lamar
Neighborhood Park*

What is the total park need today?



What did the City purchase with previous bonds?

Bond Year	Funds	Acres	Parks Acquired or Expanded		
			Destination Parks, Sports Complexes & Centers	Infill Parks	Green-belts <i>(parcels)</i>
1998	\$40,000,000	2,045	7	3	8
2006	\$20,000,000	264	5	4	3
2012	\$ 4,000,000	99	0	3	3

How far could the bonds go?

Funds	Acres	Parks Acquired or Expanded		
		Destination Parks, Sports Complexes & Centers	Infill Parks	Green-belts (miles)
\$30,000,000	500	1	15	10
\$50,000,000	830	3	20	15
Total Parkland Acquisition Need \$105,000,000	1,660	3	51	68



Questions?



Ann and Roy Butler Hike and Bike Trail

Contact Information

Randy Scott
Parks and Recreation Department
City of Austin
(512) 974-6591
Randy.Scott@austintexas.gov

Jackie Chuter
Parks and Recreation Department
City of Austin
(512) 974-9457
Jackie.chuter@austintexas.gov