



St. Edwards Park

2018 Bond Election Advisory Task Force: Open Space Working Group

Parkland Acquisition Overview

August 10, 2017



Presentation Overview

- Imagine Austin policies
- Current parkland deficiencies
- Strategies
- Acquisitions with previous bonds
- 2018 Bond proposal

Implementing Imagine Austin

PARD is guided by these Imagine Austin polices:

- Integrate nature into the city
- Expand the trail network
- Maximize the role of parks and recreation in promoting healthy communities and lifestyles
- Expand the amount of natural areas for passive recreation
- Foster the use of creeks and lakes for recreation in a manner that maintains their natural character

Parks within walking distance

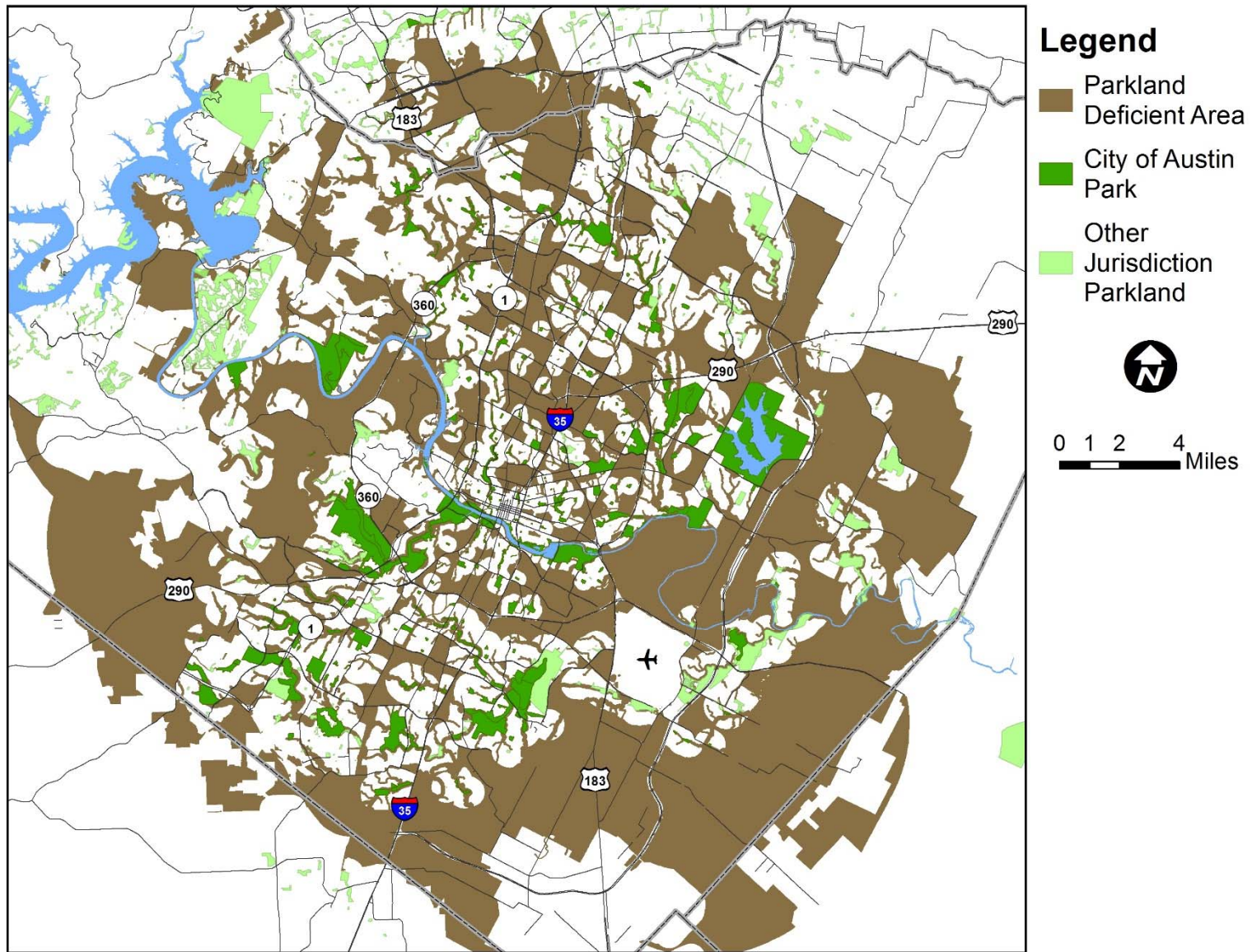
The Imagine Austin goal for access to parks is:

- $\frac{1}{4}$ mile walk in urban core
- $\frac{1}{2}$ mile walk outside the urban core

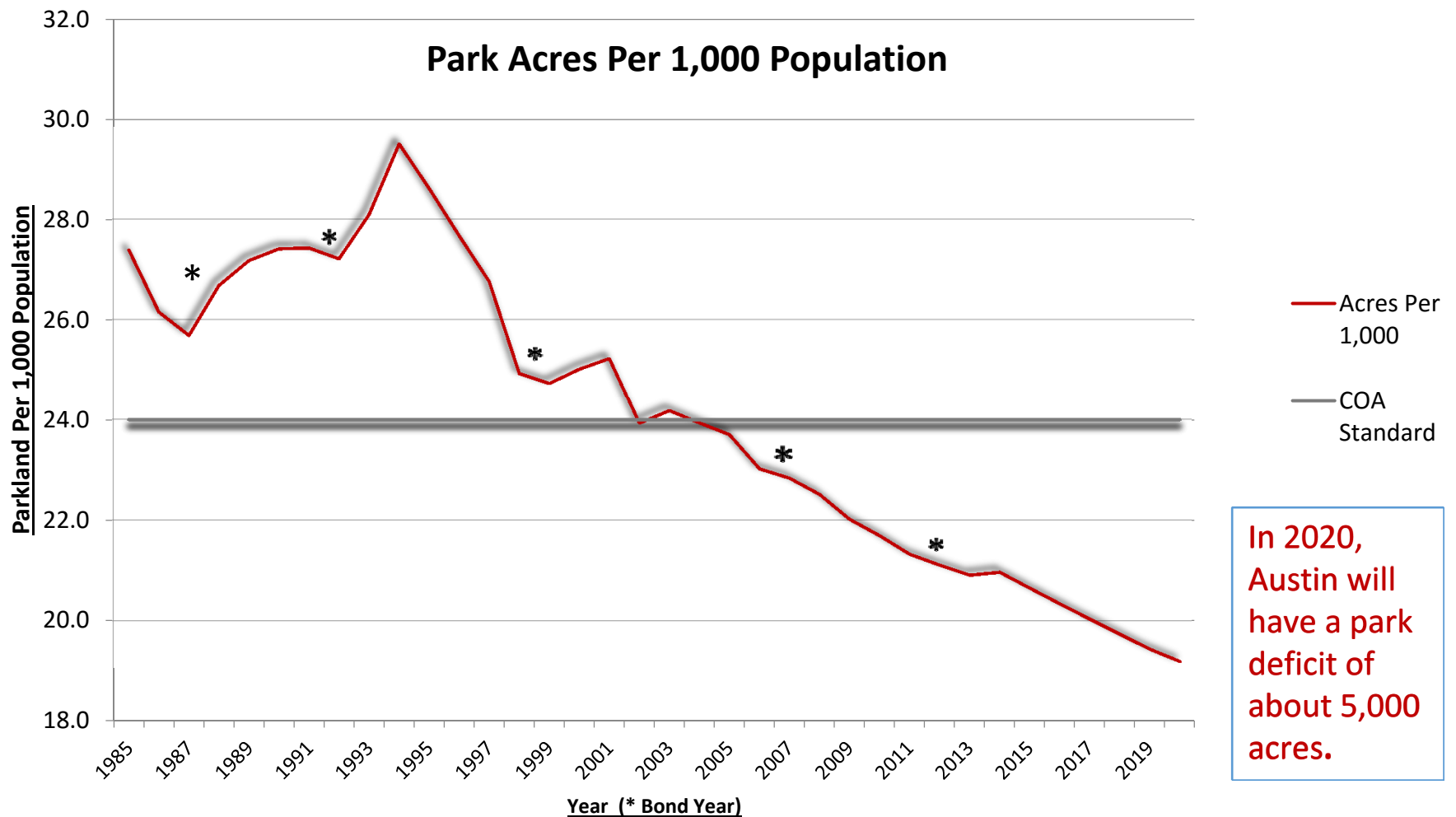


Adams-Hemphill Neighborhood Park

Where Austin is park-deficient



How park-deficient are we?



How PARD is reducing park deficiency

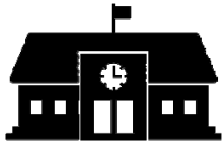
Parkland dedication



Created by Alexander Skusevsky
from Noun Project

Acquiring more parkland in new development and redevelopment projects and calibrating fees to actual land costs

School parks



Created by Adrien Coquet
from Noun Project

Enhancing partnerships with schools to make playgrounds available to non-school-aged children during school hours

Bonds



Created by Peter van Driel
from Noun Project

Proposing bonds to acquire larger parcels and critical connections

Parkland bonds and purchasing power have diminished over time

Bond Year	Funds	Acres	Parks Acquired or Expanded					
			Metro Parks	Sports Complexes & Centers	District Park	Neighborhood Parks	Pocket Parks	Green-belts
1998	\$40,000,000	2,045	3	3	1	2	1	8
2006	\$20,000,000	264	1	2	2	2	2	3
2012	\$ 4,000,000	99	0	0	0	3	0	3
2018*	\$30,000,000	500						

* Proposed

With these funds, new parks were acquired, and existing parks were expanded since 1998

METRO PARKS:

John Treviño Jr. at Morrison Ranch

Onion Creek

Roy G. Guerrero Colorado River Park

Zilker

District Parks:

Bolm

Colony

Old San Antonio

SPORTS COMPLEXES:

Onion Creek Soccer Complex

Walnut Creek Sports Complex

CENTERS:

North Austin YMCA

South Austin Senior Activity Center

NEIGHBORHOOD PARKS:

Brownie

Georgian Acres

Tom Lasseter-South Lamar

Heritage Oaks

Scofield Farms

Triangle Commons

Wunneburger



Heritage Oaks Park

With these funds, new parks were acquired, and existing parks were expanded since 1998

GREENBELTS:

Baurle Ranch at Slaughter Creek

Bull Creek – Spicewood Springs

Country Club Creek

Gracywoods

Little Walnut Creek

North Star

Onion Creek

Slaughter Creek

Upper Bull Creek

Waller Creek

Walnut Creek

Williamson Creek Central

Colorado River/Walnut Creek

POCKET PARKS:

Alderbrook

Chestnut

Pomerleau



Chestnut Pocket Park



2018 Bond Proposal

Current Proposal for Parkland Acquisition

\$30 Million for:

- Destination park
- Infill parks
- Greenbelts



Mary Moore Searight Metropolitan Park

Destination park to serve existing residents

Large metropolitan park in Oak Hill

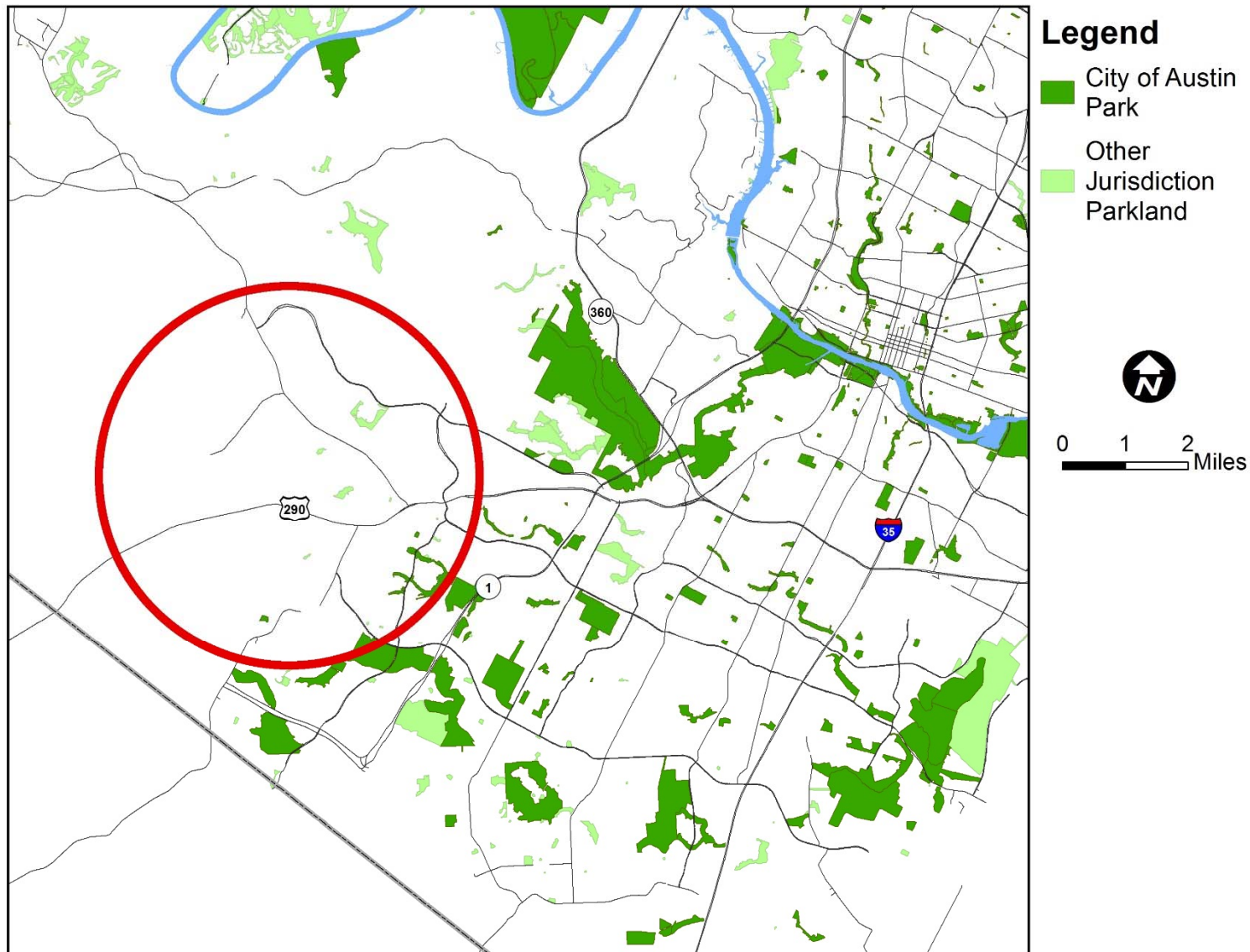
~ 200 acres with sports fields

Explore partnership with WPD to preserve water quality



*Onion Creek Soccer
Complex*

Preferred destination park location



Infill parks to serve existing residents

Located in park-deficient areas

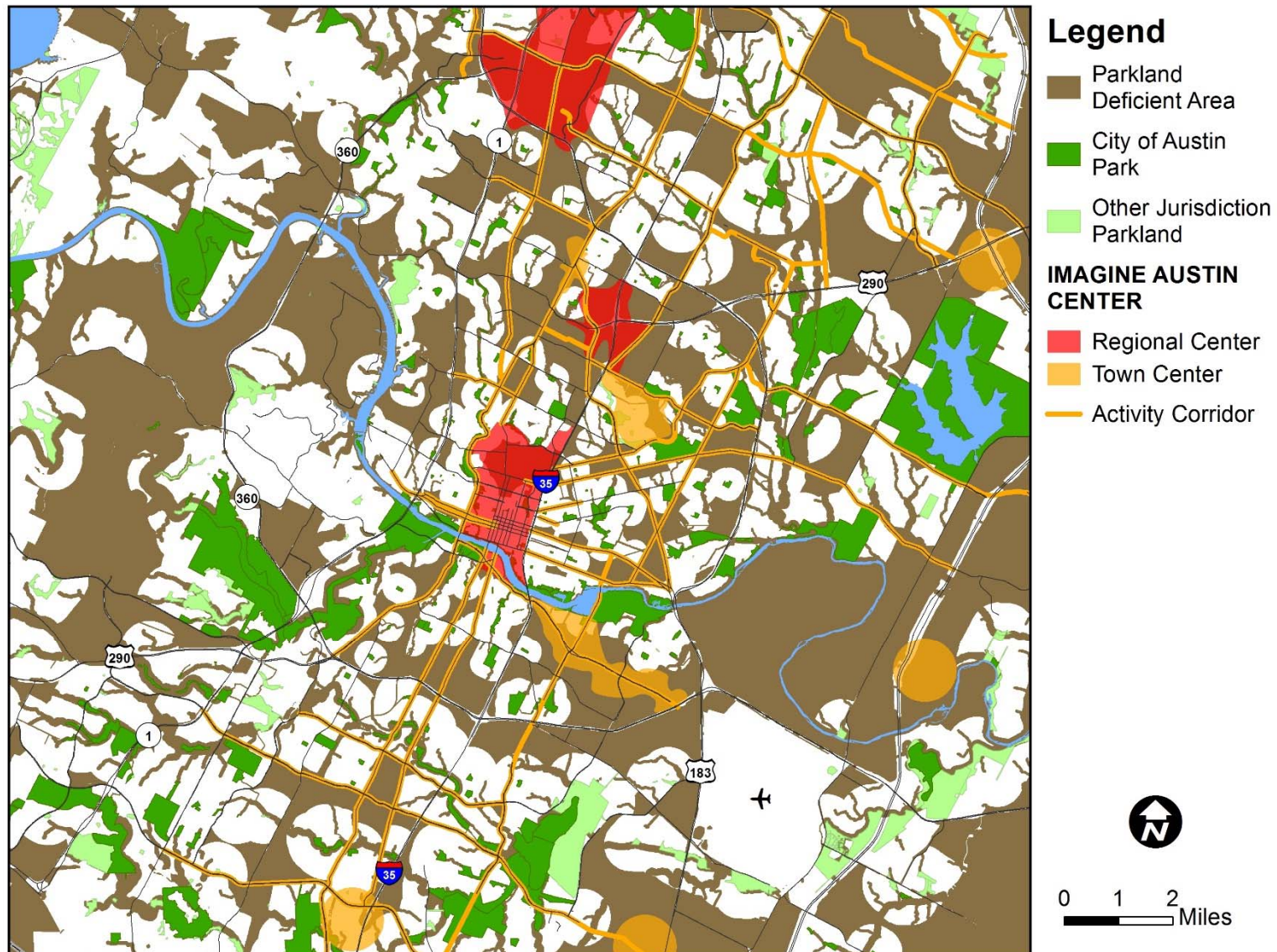
Pocket parks: up to 2 acres

Neighborhood parks: 2 – 30 acres



*Tom Lasseter-South Lamar
Neighborhood Park*

Infill parks to serve existing residents



Greenbelts to mitigate the impacts of urbanization on Austin residents

- Minimize flood potential
- Increase access to nature
- Connect neighborhoods to parks by trails



Country Club Creek Greenbelt

Southern Travis County Creeks

Bear Creek

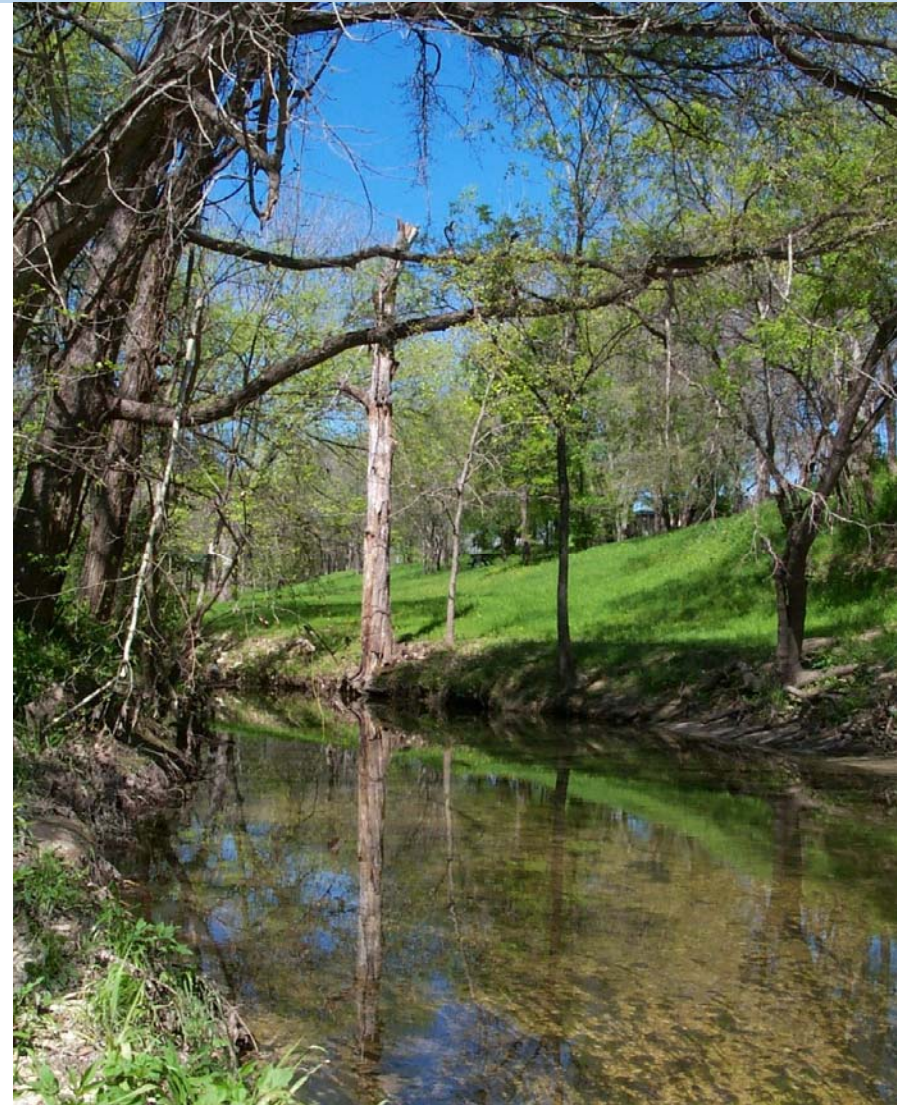
Little Bear Creek

Onion Creek

Slaughter Creek

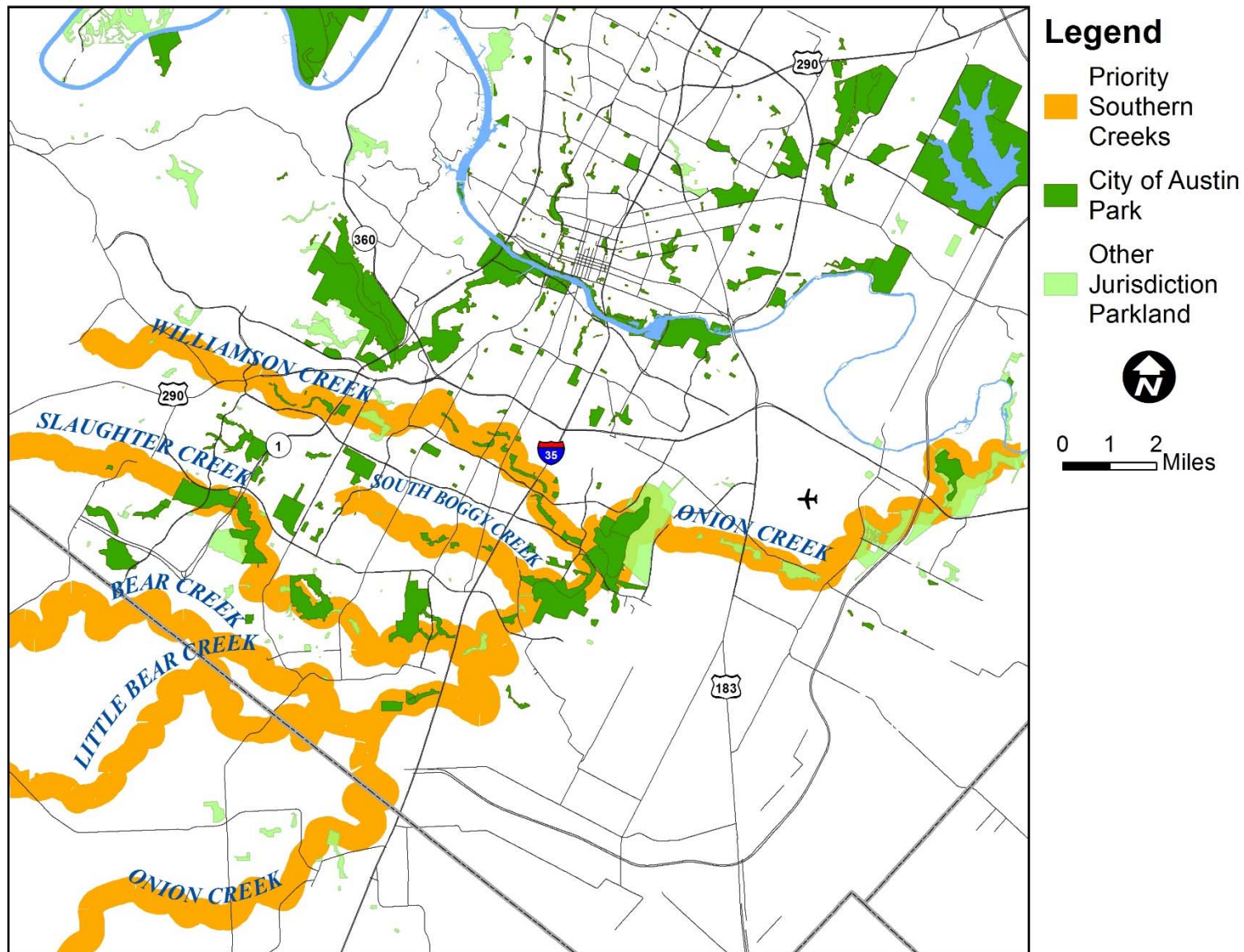
South Boggy Creek

Williamson Creek



Williamson Creek

Southern Travis County Creeks



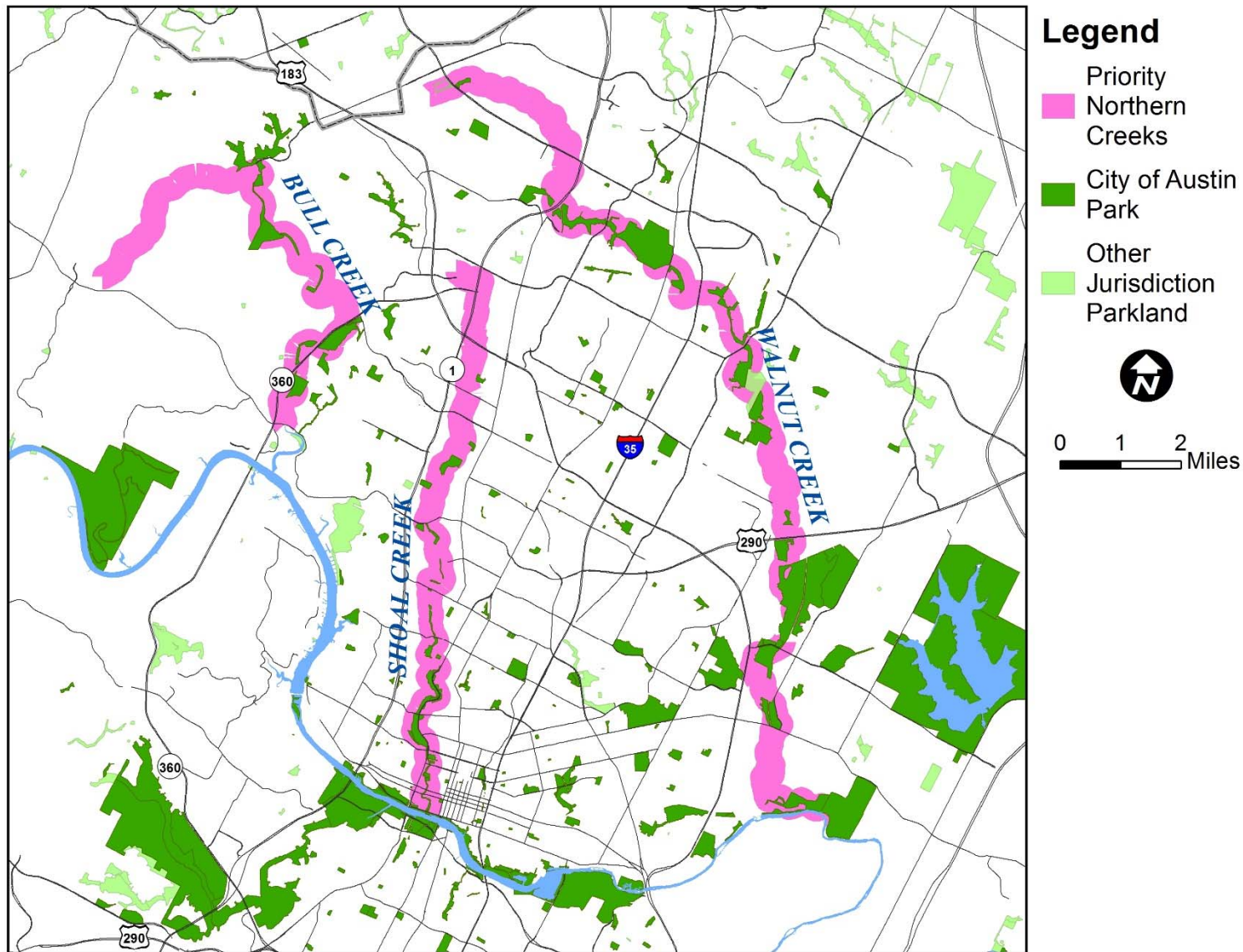
Northern Travis County Creeks

Bull Creek
Shoal Creek
Walnut Creek



*Copperfield Neighborhood Park
(Northern Walnut Creek)*

Northern Travis County Creeks

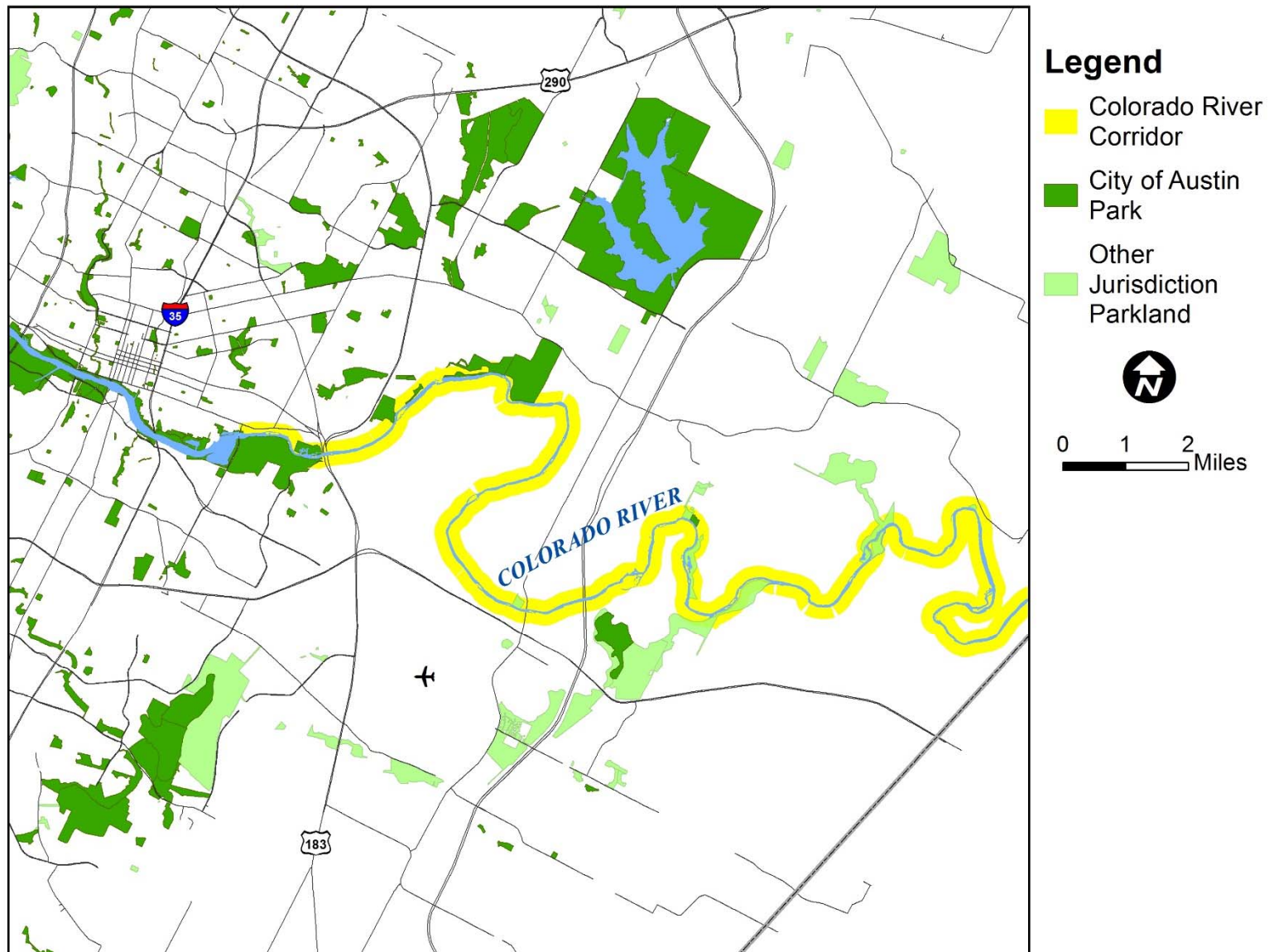


Colorado River Corridor Goals

- Expand the Lady Bird Lake Corridor eastward
- Acquire water access points along the Colorado River
- Corridor targets will be between Longhorn Dam and Hornsby

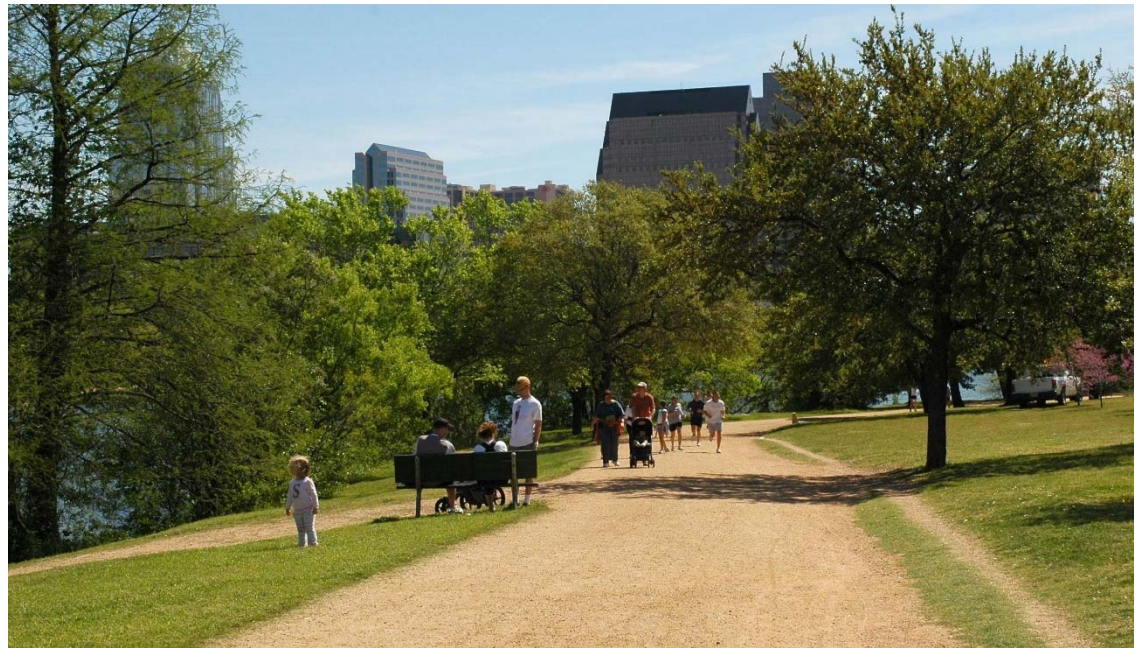


Colorado River Corridor



Summary and Closing

- PARD proposes acquisition of a destination park, infill parks, and greenbelts
- Bond funds for continued parkland acquisition are vital to maintaining park quality and access enjoyed by current residents



Ann and Roy Butler Hike and Bike Trail

Questions?

Randy Scott
Parks and Recreation Department
City of Austin
(512) 974-6591
Randy.Scott@austintexas.gov