

Travis County Influenza Surveillance



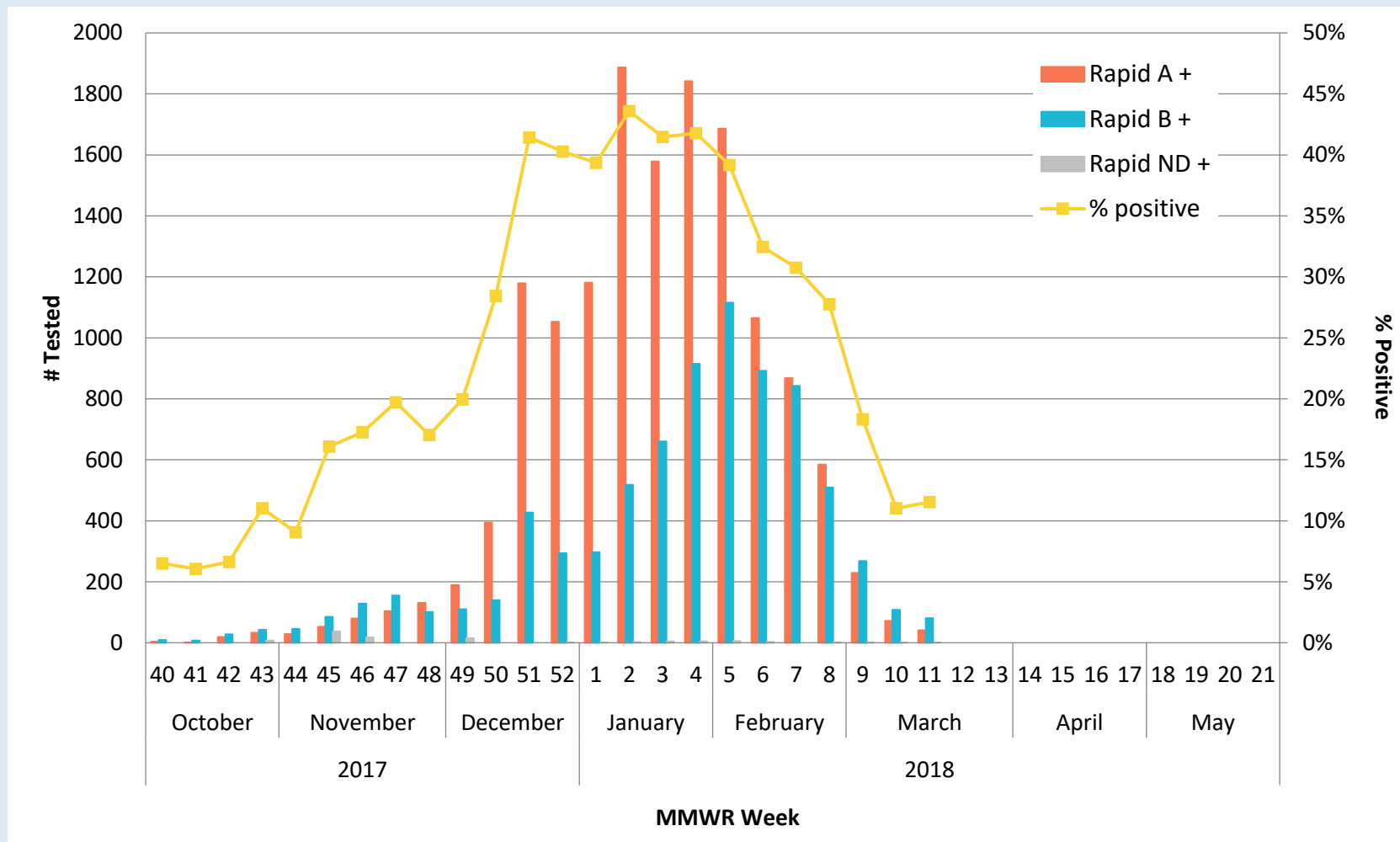
Summary – Season 2017-2018 (as of March 19, 2018).

- Influenza activity has decreased over the past few weeks in Travis County.
- The percentage of specimens positive by rapid antigen tests for influenza reported by hospital and public health laboratories in Travis County is around 11% (as of MMWR week 11).
- There have been 27 outbreaks reported among long term care facilities.
- Forty eight influenza-associated deaths have been reported among Travis County residents, no influenza-associated pediatric deaths have been reported.
- As of MMWR week 10, statewide the number of patient visits due to Influenza like Illness has marginally decreased (ILI) is around 6%. (Figure 2).
- In Texas, A(H3N2) virus is the predominate strain circulating; B, and A(H1N1) are co-circulating (Figure 3).
- In addition to flu, other respiratory viruses - especially rhinovirus/enterovirus - were detected in Texas during epidemiological week 10.
- According to CDC, although influenza activity has declined significantly for the fourth consecutive week, flu activity is expected to continue for several more weeks. Interim early estimates about flu vaccine effectiveness reported on the Morbidity and Mortality Weekly Report are: 36% overall; 25% against H3N2, 67% against H1N1 A viruses, and 42% against B viruses.
- Flu vaccination is always recommended, even if you have already been sick, and early antiviral treatment for people who are very ill or those who have influenza and are at high risk of complications.
- PCR testing is performed for specimens referred by area sentinel Influenza surveillance reporters. Providers interested in becoming sentinel providers may call the Austin Public Health - Epidemiology and Disease Surveillance Unit at (512) 972-5555.

Travis County Influenza Surveillance



Figure 1. Number Tested and Percent Positive Rapid Influenza tests in Travis County by week, 2017-2018 Influenza Season*



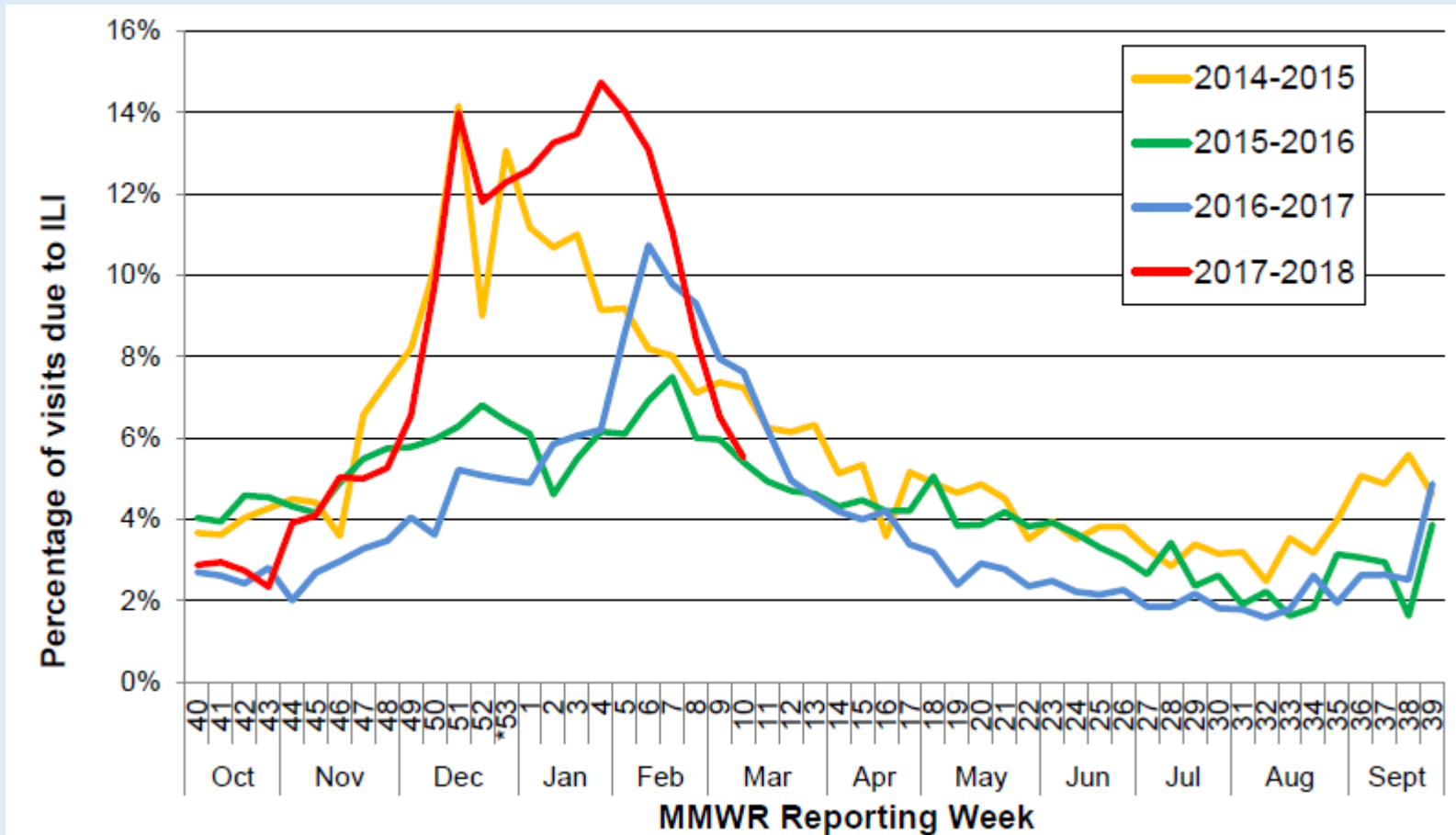
*Data source: Austin/Travis County Influenza surveillance reporters (St. David's, Seton, Austin Regional Clinic)

Austin/Travis County influenza surveillance does not attempt to capture all cases of influenza or influenza-like illness. These data should be used for trending purposes over time and for identifying types/strains of influenza that are occurring in the Austin area rather than for estimating the total number of cases.

Travis County Influenza Surveillance



Figure 2: Percentage of Visits Due to Influenza-like Illness Reported by Texas ILINet Participants, 2014–2018 Seasons*



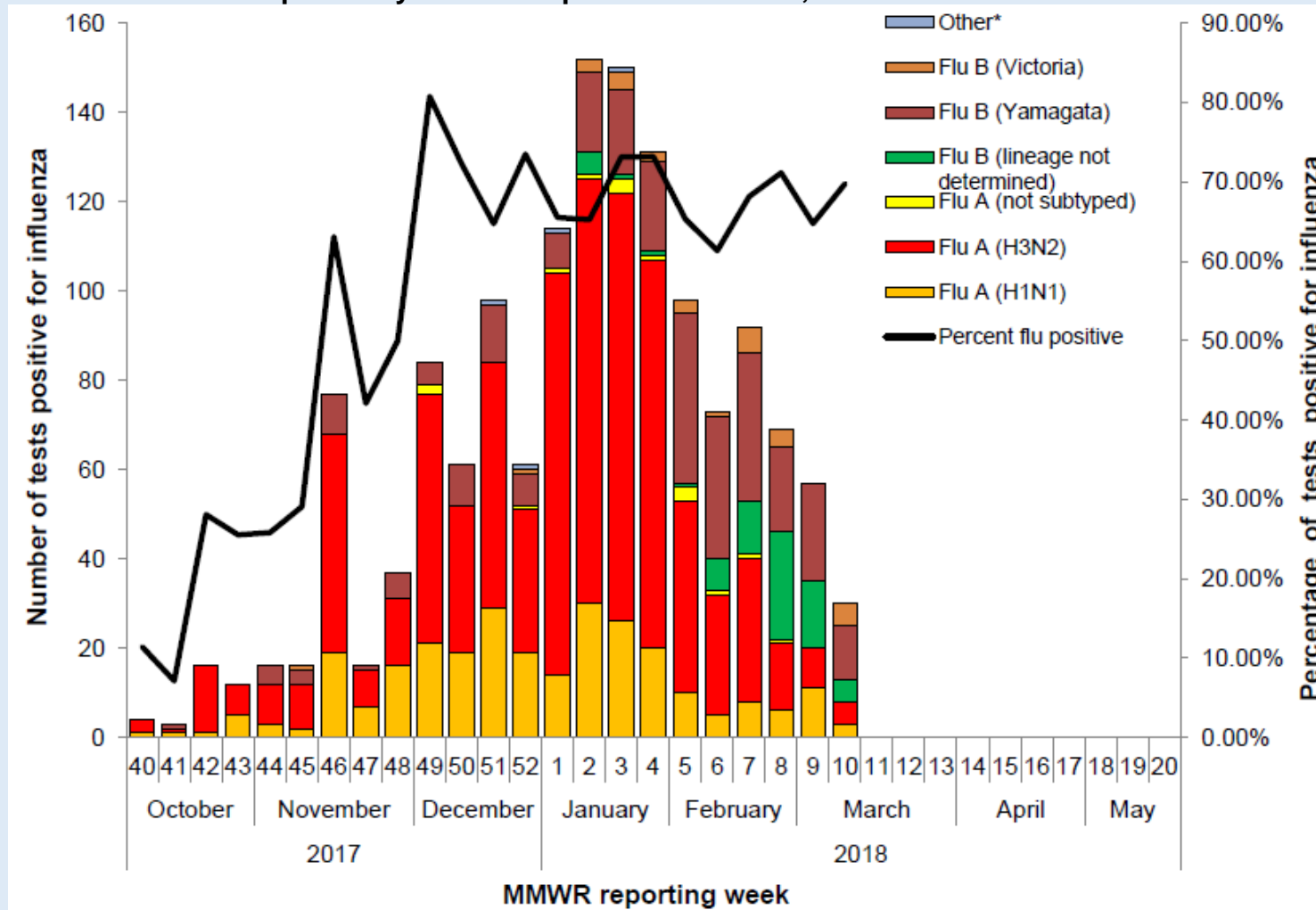
*There was a week 53 in the 2014-2015 influenza season, but there is not a week 53 for the 2017-2018 influenza season or the other previous seasons; therefore, the week 53 data point for those seasons is an average of week 52 and 1

Austin/Travis County influenza surveillance does not attempt to capture all cases of influenza or influenza-like illness. These data should be used for trending purposes over time and for identifying types/strains of influenza that are occurring in the Austin area rather than for estimating the total number of cases.

Travis County Influenza Surveillance



Figure 3: Number and Percentage of Tests (Antigen, Culture, PCR) Positive for Influenza by Type and Subtype Reported by Texas Hospital Laboratories, 2017–2018 Seasons



Austin/Travis County influenza surveillance does not attempt to capture all cases of influenza or influenza-like illness. These data should be used for trending purposes over time and for identifying types/strains of influenza that are occurring in the Austin area rather than for estimating the total number of cases.

Travis County Influenza Surveillance



For additional information about Influenza surveillance, contact:

The Austin/Travis County Health and Human Services Epidemiology and Health Statistics Unit at (512) 972-5555

Other Helpful Resources:

Texas Department of State Health Services (DSHS)

<http://www.texasflu.org/>

World Health Organization (WHO)

<http://www.who.int/influenza/en/>

Centers for Disease Control and Prevention (CDC)

<https://www.cdc.gov/flu/index.htm>