

Travis County Influenza Surveillance

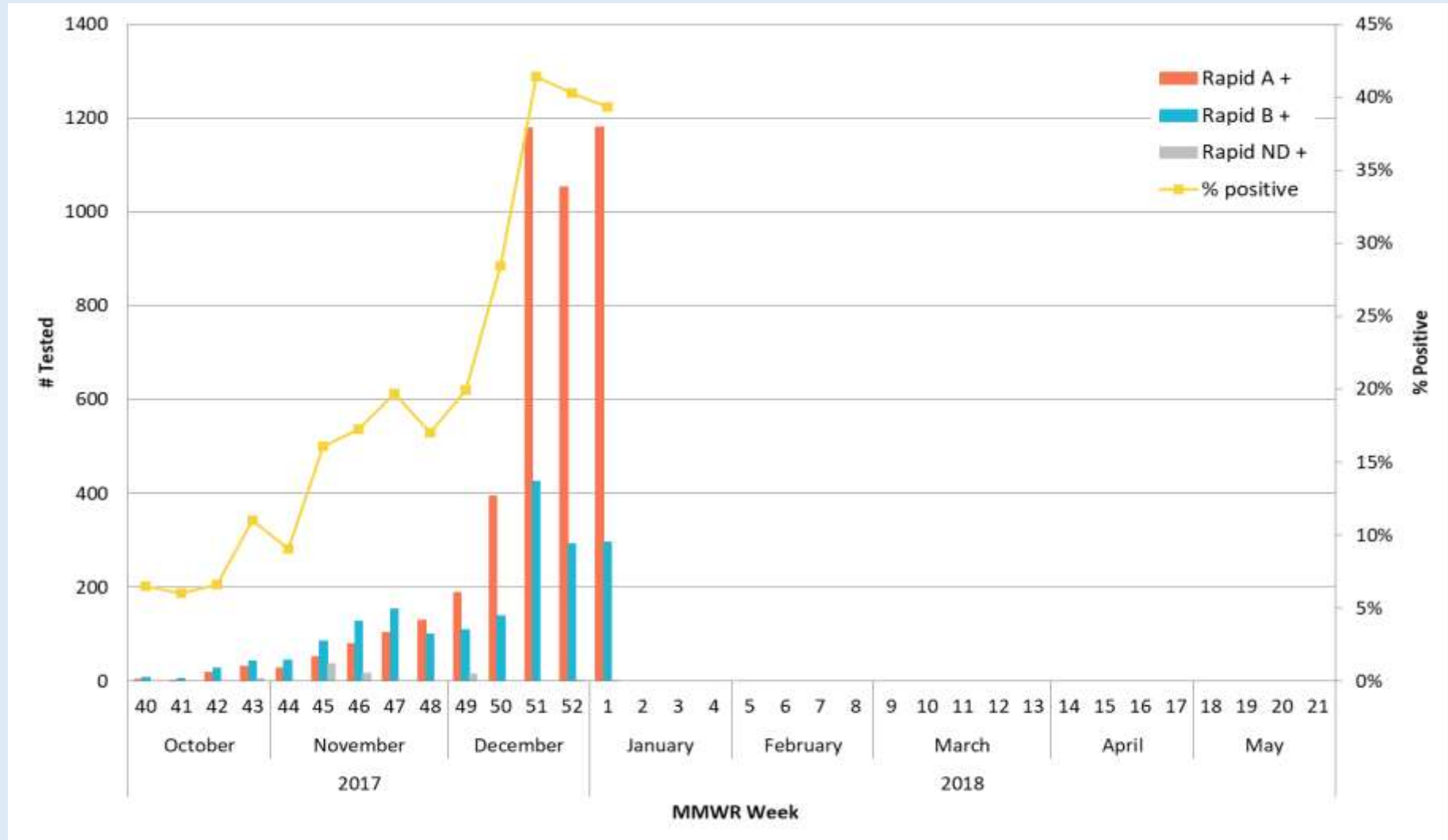


Summary – Season 2017-2018 (as of January 15, 2018).

- Influenza activity is widespread in Travis County.
- The percentage of specimens positive by rapid antigen tests for influenza reported by hospital and public health laboratories in Travis County is 39.3%.
- There have been 15 outbreaks reported among long term care facilities.
- Twelve influenza-associated deaths have been reported among Travis County residents, no influenza-associated pediatric deaths have been reported.
- Statewide the number of patient visits due to Influenza like Illness (ILI) is around 13% (Figure 2).
- In Texas, A(H3N2) virus is the predominate strain circulating; A(H1N1), and B are co-circulating (Figure 3).
- In addition to flu, other respiratory viruses - especially respiratory syncytial virus (RSV) - were detected in Texas during epidemiological week 01. No antiviral resistance testing data for Texas specimens are available at this time.
- According to CDC, influenza activity is expected to continue. When looking at different indicators, this season (2017-2018) is similar to the 2014-2015 and 2012-2013 seasons.
- PCR testing is performed for specimens referred by area sentinel Influenza surveillance reporters. Providers interested in becoming sentinel providers may call the Austin Public Health - Epidemiology and Disease Surveillance Unit at (512) 972-5555.

Travis County Influenza Surveillance

Figure 1. Number Tested and Percent Positive Rapid Influenza tests in Travis County by week, 2017-2018 Influenza Season*



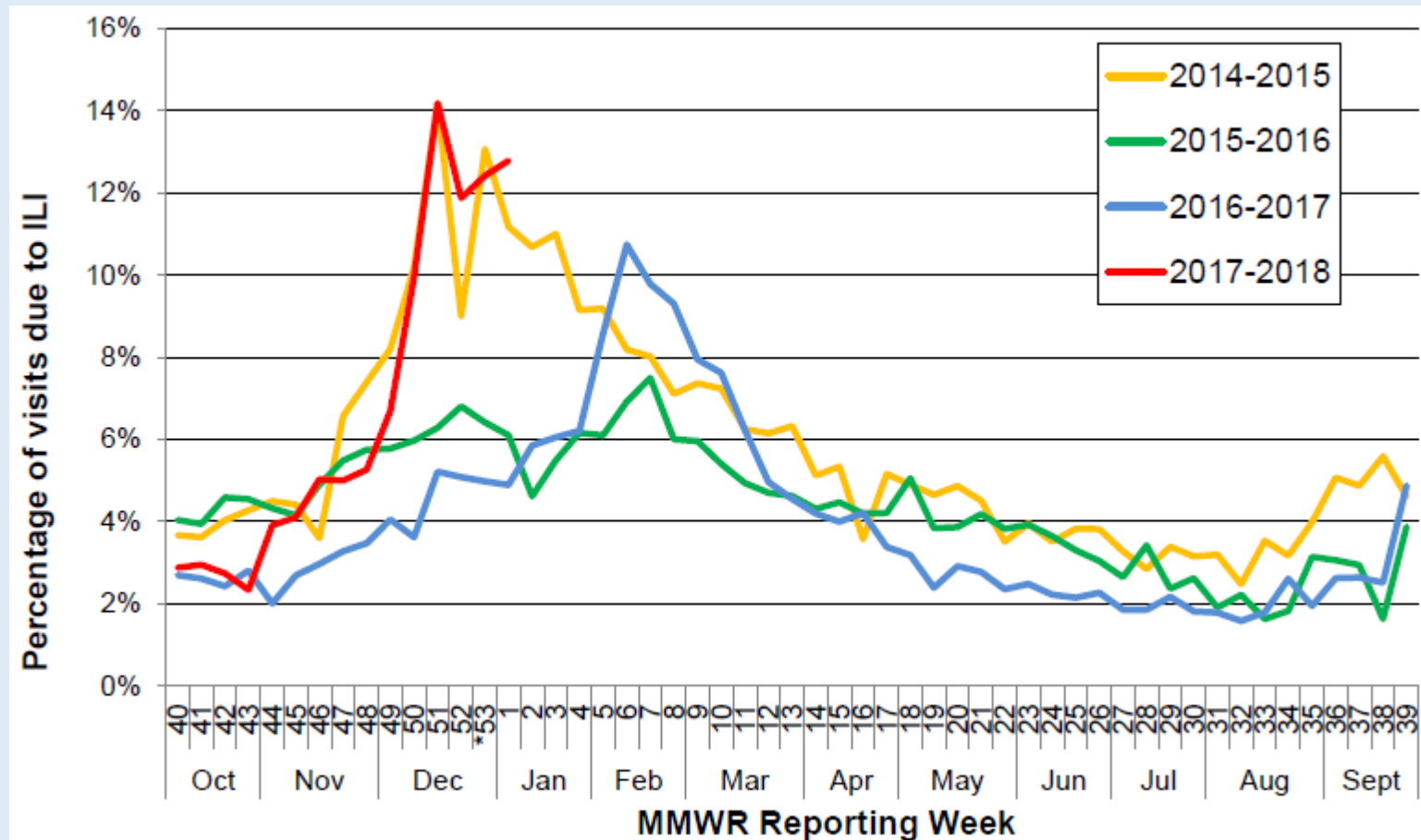
*Data source: Austin/Travis County Influenza surveillance reporters (Seton, St. David's, Austin Regional Clinic)

Austin/Travis County influenza surveillance does not attempt to capture all cases of influenza or influenza-like illness. These data should be used for trending purposes over time and for identifying types/strains of influenza that are occurring in the Austin area rather than for estimating the total number of cases.

Travis County Influenza Surveillance



Figure 2: Percentage of Visits Due to Influenza-like Illness Reported by Texas ILINet Participants, 2014–2018 Seasons*

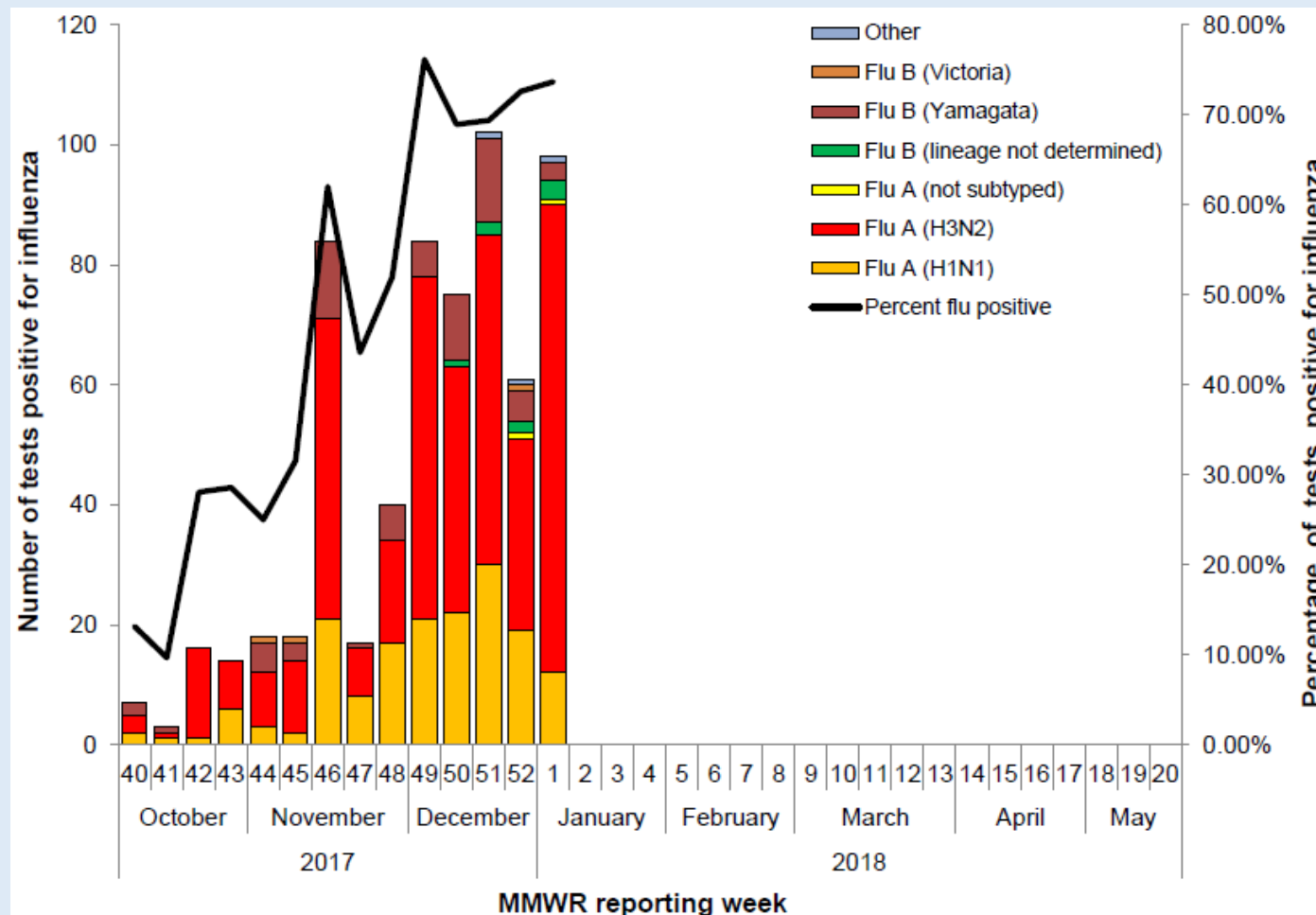


*There was a week 53 in the 2014-2015 influenza season, but there is not a week 53 for the 2017-2018 influenza season or the other previous seasons; therefore, the week 53 data point for those seasons is an average of week 52 and 1.

Austin/Travis County influenza surveillance does not attempt to capture all cases of influenza or influenza-like illness. These data should be used for trending purposes over time and for identifying types/strains of influenza that are occurring in the Austin area rather than for estimating the total number of cases.

Travis County Influenza Surveillance

Figure 3: Number and Percentage of Tests (Antigen, Culture, PCR) Positive for Influenza by Type and Subtype Reported by Texas Hospital Laboratories, 2017–2018 Seasons



Austin/Travis County influenza surveillance does not attempt to capture all cases of influenza or influenza-like illness. These data should be used for trending purposes over time and for identifying types/strains of influenza that are occurring in the Austin area rather than for estimating the total number of cases.

Travis County Influenza Surveillance



For additional information about Influenza surveillance, contact:

The Austin/Travis County Health and Human Services Epidemiology and Health Statistics Unit at (512) 972-5555

Other Helpful Resources:

Texas Department of State Health Services (DSHS)

<http://www.texasflu.org/>

World Health Organization (WHO)

<http://www.who.int/influenza/en/>

Centers for Disease Control and Prevention (CDC)

<https://www.cdc.gov/flu/index.htm>