

## Travis County Influenza Surveillance

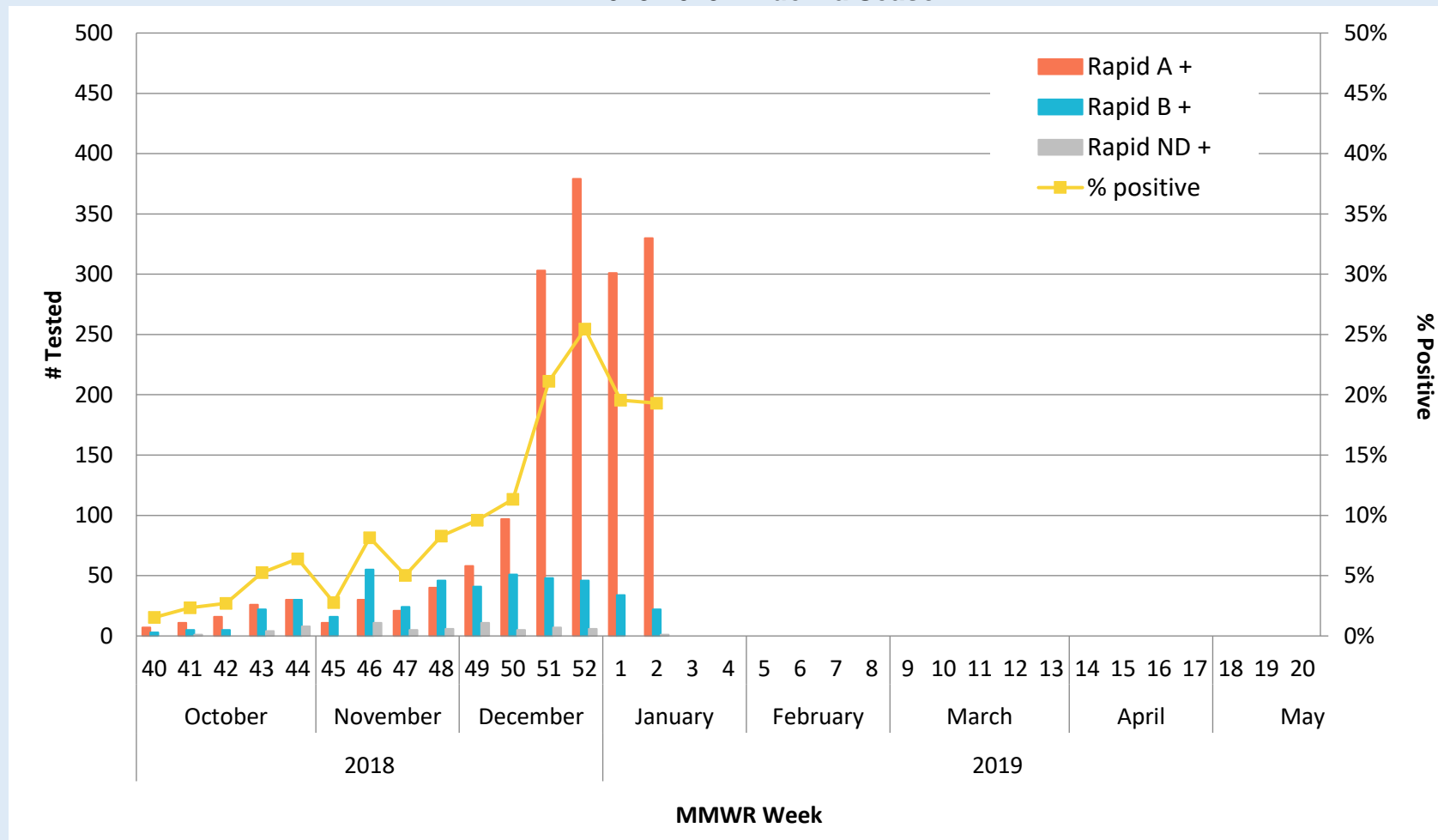


### **Summary** – Season 2018-2019 (as of January 18, 2018).

- Influenza activity has increased compared to the previous week, and is elevated in Travis County.
- The percentage of specimens positive by rapid antigen tests for influenza reported by hospital and public health laboratories in Travis County is 19.3% (as of MMWR week 2).
- Two outbreaks have been reported among long term care facilities.
- One influenza-associated death has been reported among Travis County residents during this season. No influenza associated pediatric deaths have been reported.
- As of MMWR week 2, the percentage of specimens testing positive for influenza reported by hospital laboratories increased across Texas, statewide the number of patient visits due to Influenza like Illness (ILI) was 5.01% (Figure 2).
- In Texas, as of week 2, A virus strain were more commonly detected (Figure 3).
- In addition to flu, other respiratory viruses - especially rhinovirus, respiratory syncytial virus (RSV) - were detected in Texas during epidemiological week 2.
- According to CDC, influenza activity remained elevated in the U.S, most of the country is reporting widespread geographic influenza. Influenza A(H1N1), influenza A(H3N2), and influenza B viruses continue to co-circulate.
- In the U.S., during week 49, the proportion of people seeing their health care provider for ILI was 3.1%, which is above the national baseline of 2.2%. All 10 regions reported ILI at or above their region-specific baseline level.
- It is not too late to get the flu vaccine, CDC recommends vaccination as long as flu viruses are circulating.
- Flu shots are available at Shots for Tots/Big Shots clinics for children who are uninsured or Medicaid recipients, and for uninsured adults. Cost of the flu vaccine is \$25 for adults, \$10 for children, and free for children with Medicaid. No one will be denied services if they are unable to pay. Appointments are needed at a clinic, please call 512-972-5520.
- PCR testing is performed for specimens referred by area sentinel Influenza surveillance reporters. Providers interested in becoming sentinel providers may call the Austin Public Health - Epidemiology and Disease Surveillance Unit at (512) 972-5555.

## Travis County Influenza Surveillance

**Figure 1. Number Tested and Percent Positive Rapid Influenza tests in Travis County by week, 2018-2019 Influenza Season\***



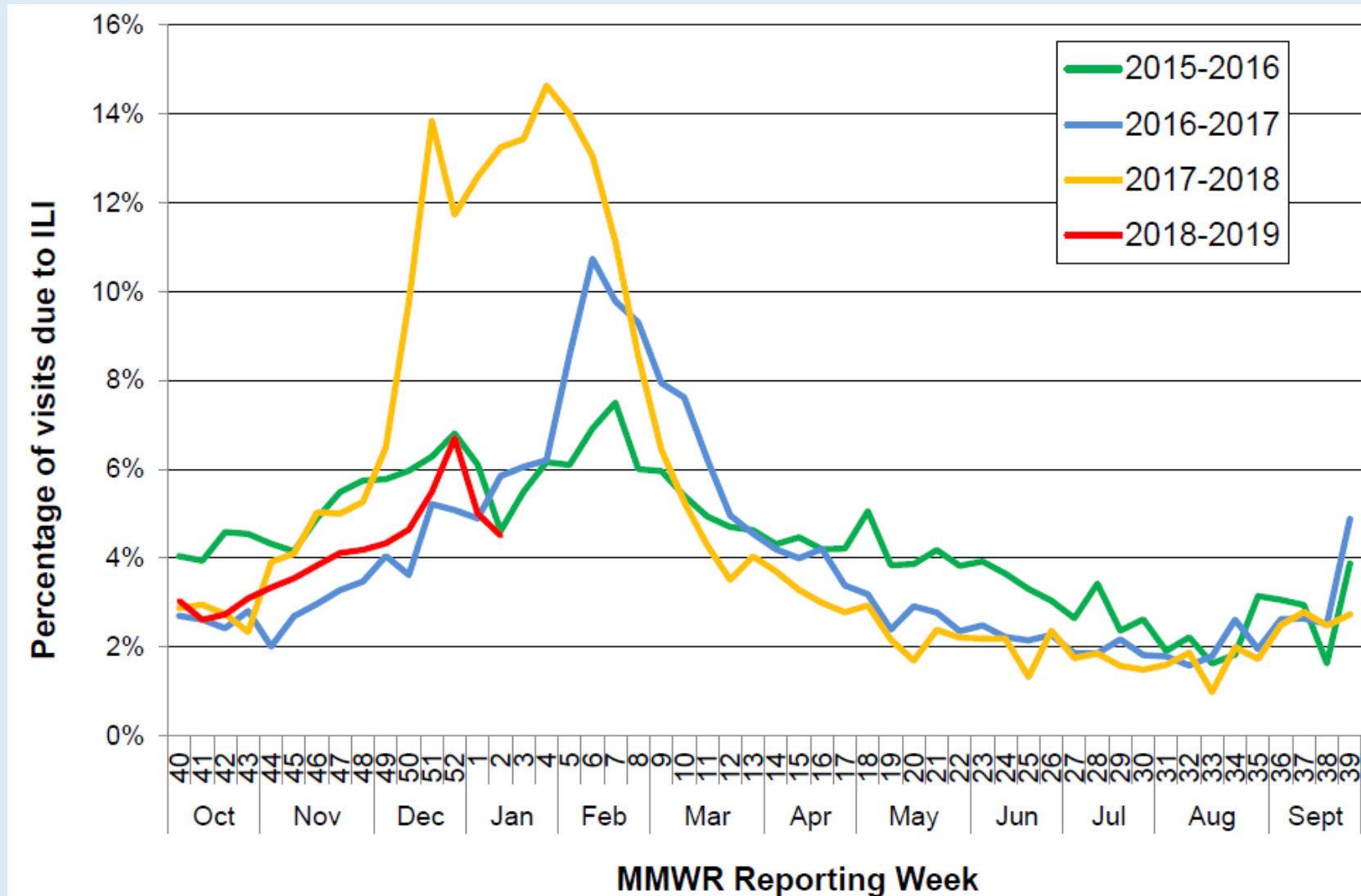
\*Data source: Austin/Travis County Influenza surveillance reporters (St. David's, Seton, Austin Regional Clinic, AISD, PISD, MISD, CommunityCare)

Austin/Travis County influenza surveillance does not attempt to capture all cases of influenza or influenza-like illness. These data should be used for trending purposes over time and for identifying types/strains of influenza that are occurring in the Austin area rather than for estimating the total number of cases.

## Travis County Influenza Surveillance



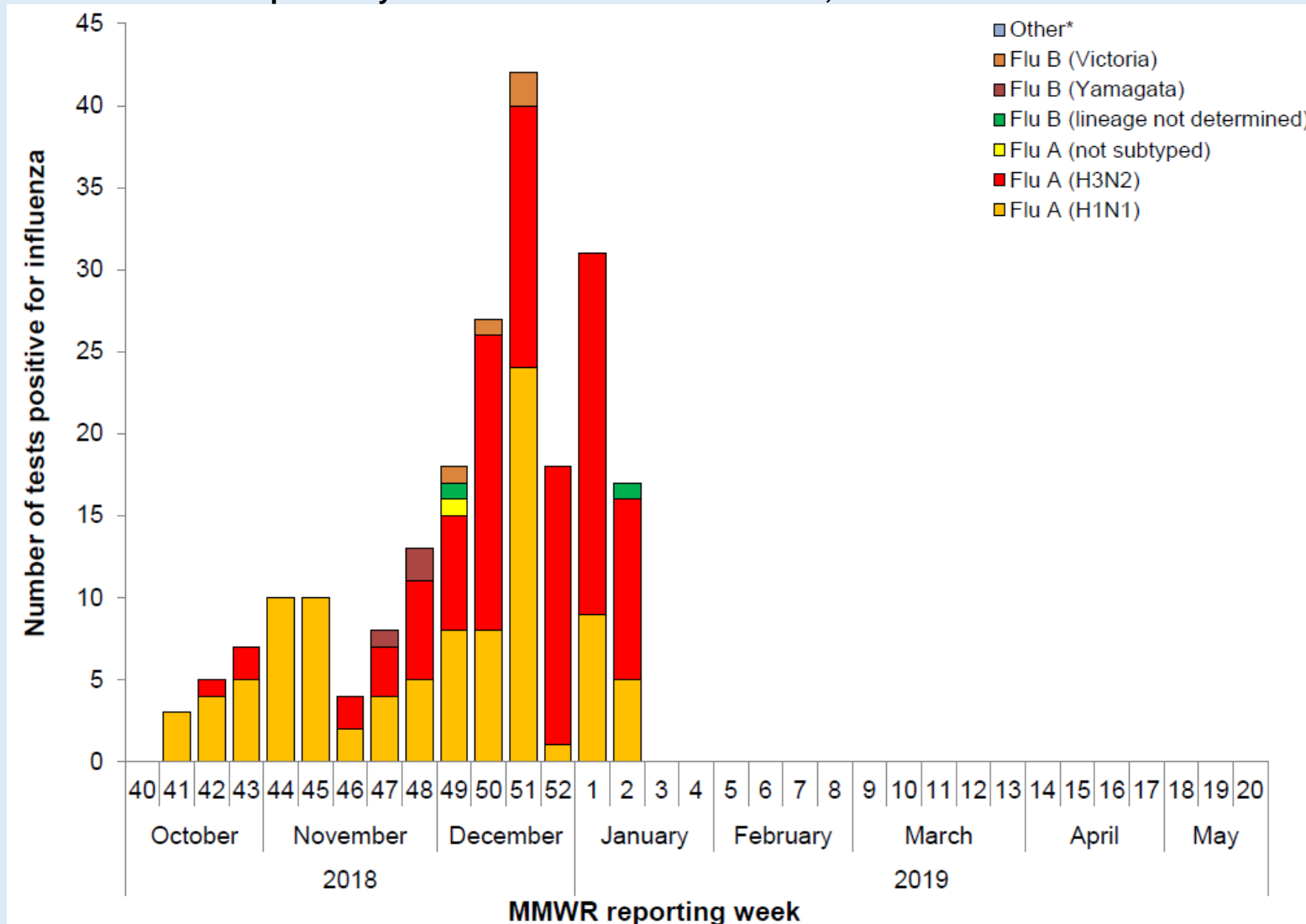
**Figure 2: Percentage of Visits Due to Influenza-like Illness Reported by Texas ILINet Participants, 2015–2019 Seasons**



Austin/Travis County influenza surveillance does not attempt to capture all cases of influenza or influenza-like illness. These data should be used for trending purposes over time and for identifying types/strains of influenza that are occurring in the Austin area rather than for estimating the total number of cases.

## Travis County Influenza Surveillance

**Figure 3: Number and Percentage of Tests (Antigen, Culture, PCR) Positive for Influenza by Type and Subtype Reported by Texas Public Health Laboratories, 2018-2019 Season**



Austin/Travis County influenza surveillance does not attempt to capture all cases of influenza or influenza-like illness. These data should be used for trending purposes over time and for identifying types/strains of influenza that are occurring in the Austin area rather than for estimating the total number of cases.

## Travis County Influenza Surveillance



**For additional information about Influenza surveillance, contact:**

*The Austin/Travis County Health and Human Services Epidemiology and Health Statistics Unit at (512) 972-5555.*

**Other Helpful Resources:**

Texas Department of State Health Services (DSHS) <http://www.texasflu.org/>

World Health Organization (WHO) <http://www.who.int/influenza/en/>

Centers for Disease Control and Prevention (CDC) <https://www.cdc.gov/flu/index.htm>

Flu in Austin <http://www.austintexas.gov/departments/flu-austin-influenza>