



**Austin/Travis County Health and Human Services Department  
Epidemiology and Health Statistics Unit**



**Travis County Epidemiological Summary of Salmonella Cases**

**2012 Salmonella Case Counts**

Total	250	100.0%
Confirmed	240	96.0%
Probable	10	4.0%

**Gender Distribution**

Male	118	47.2%
Female	132	52.8%

**Median Age**

16 Years

**Age Range**

1 Month - 89 Years

**Age Distribution**

Under 1 Year	38	15.2%
1-3 Years	45	18.0%
4-8 Years	27	10.8%
9-14 Years	13	5.2%
15-24 Years	22	8.8%
25-34 Years	24	9.6%
35-44 Years	26	10.4%
45-54 Years	17	6.8%
55-64 Years	16	6.4%
65 Years and Older	22	8.8%

Data presented in this report includes both confirmed and probable cases of Salmonella reported in Travis County. This report includes completed case investigations only. All data for 2012 are preliminary. The data provided for 2011 was generated on August 8, 2012 and 2012 data was generated on January 9, 2013.

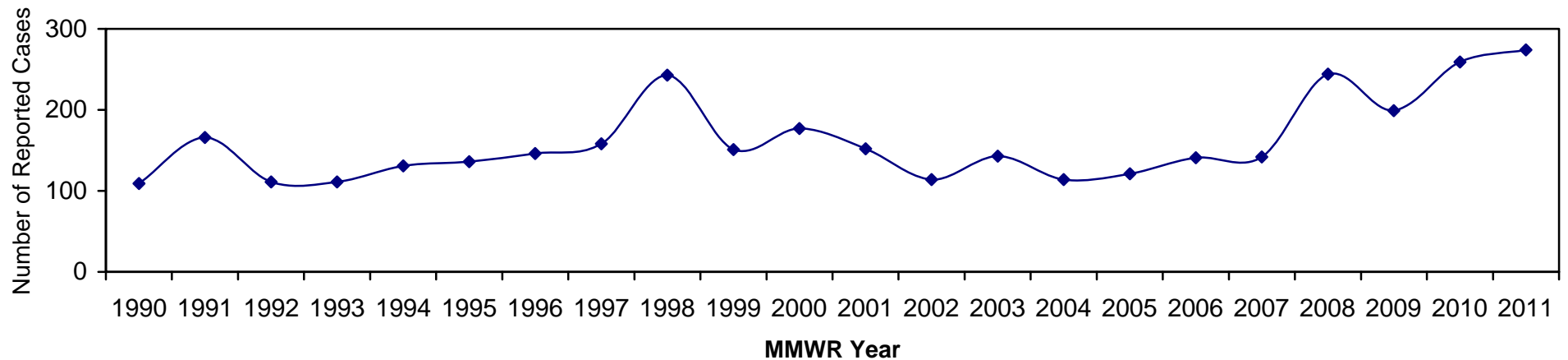


## Austin/Travis County Health and Human Services Department Epidemiology and Health Statistics Unit



The number of Salmonella cases varies over time in Travis County (Figures 1 and 3). The total number of annual Salmonella reports has been increasing each year since 2009 (Figure 1). Preliminary 2012 data is available and seems to suggest that there might be a slight decline in the number of Salmonella cases since 2011 (Figure 3). In 2012 to date, we have 44.0% of all Salmonella cases occurring in individuals eight years old and younger (Figure 4). However, data is not complete and preliminary results should be interpreted with caution. The true impact of Salmonella on the community will be determined from finalized data.

**Figure 1. Travis County Reported Cases of Salmonella by Year 1990 - 2011<sup>1,2</sup>**

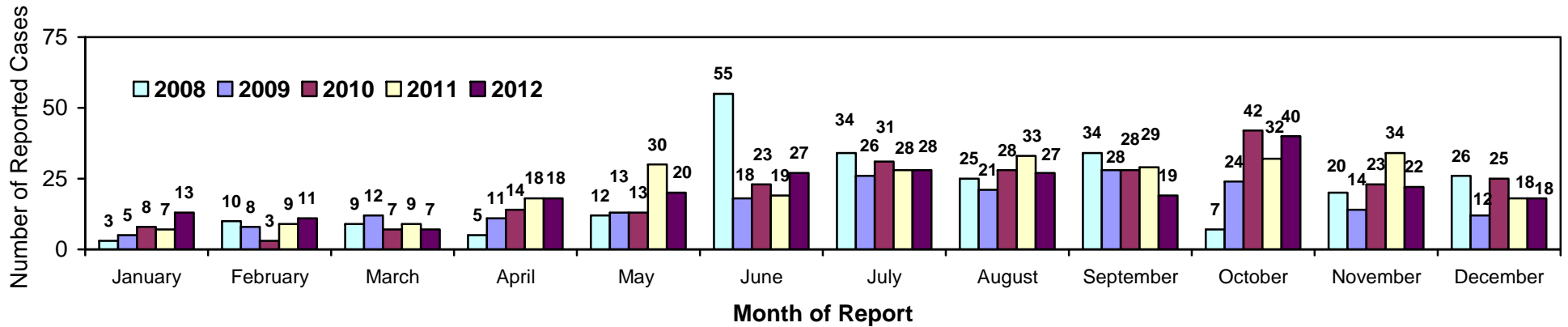




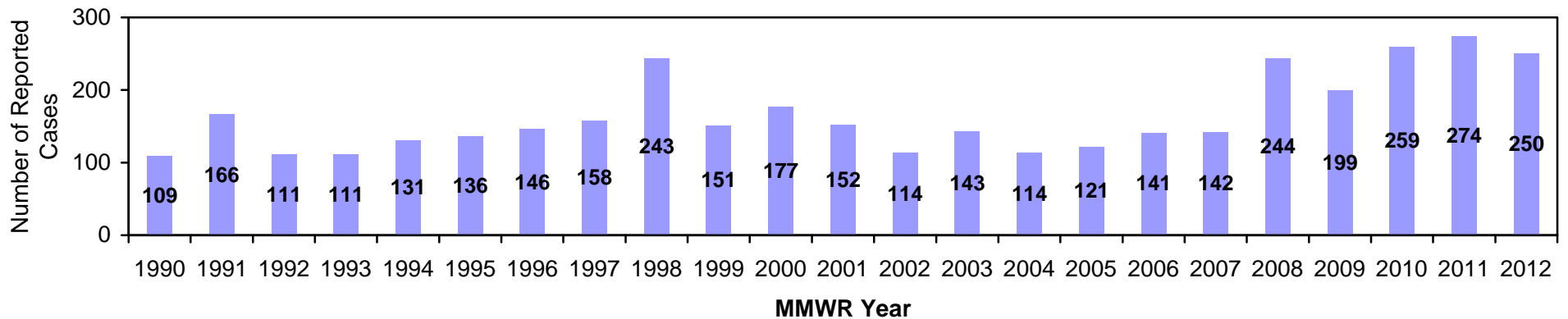
**Austin/Travis County Health and Human Services Department  
Epidemiology and Health Statistics Unit**



**Figure 2. Travis County Reported Cases of Salmonella by Month of Report 2008 - 2012<sup>1,3</sup>**



**Figure 3. Travis County Reported Cases of Salmonella by Year 1990 – 2012<sup>1,2</sup>**

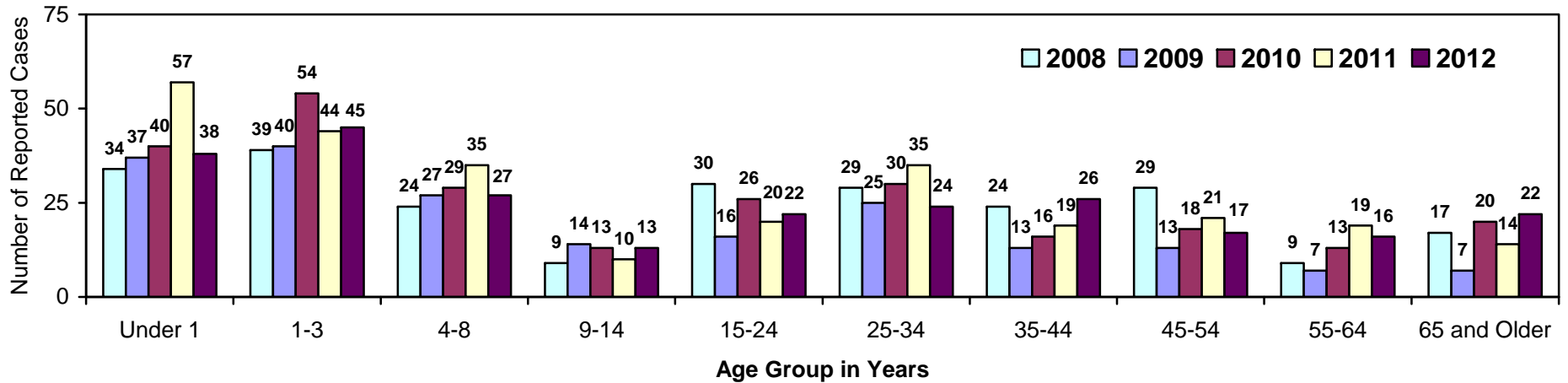




**Austin/Travis County Health and Human Services Department  
Epidemiology and Health Statistics Unit**



**Figure 4. Travis County Reported Cases of Salmonella by Age Group 2008 – 2012<sup>1,2</sup>**



For additional information about Salmonella and Salmonella Outbreaks:

<http://www.cdc.gov/salmonella/>

<http://www.cdc.gov/salmonella/outbreaks.html>

For additional information about hand washing:

<http://www.cdc.gov/handwashing/>

<sup>1</sup> Data provided for 2012 is preliminary data. The data provided for 2011 was generated on August 8, 2012 and 2012 data was generated on January 9, 2013.

<sup>2</sup> Yearly data provided is based on MMWR year and not on calendar year.

<sup>3</sup> Data by month of report may not include all cases for that MMWR year. All data are pulled by MMWR year and not calendar year. As a result, there are some instances in which cases are reported with a MMWR year in one year but the actual report was received the following calendar year. Consequently, the annual totals may not equal the exact total number of cases when each month's totals are summed.