



**Austin/Travis County Health and Human Services Department
Epidemiology and Health Statistics Unit**



Travis County Epidemiological Summary of Shigella Cases

2012 Shigella Case Counts

Total	146	100.0%
Confirmed	116	79.5%
Probable	30	20.5%

Gender Distribution

Male	65	44.5%
Female	81	55.5%

Median Age

7 Years

Age Range

10 Months - 87 Years

Age Distribution

Under 1 Year	1	0.7%
1-3 Years	42	28.8%
4-8 Years	42	28.8%
9-14 Years	15	10.3%
15-24 Years	13	8.9%
25-34 Years	10	6.8%
35-44 Years	9	6.2%
45-54 Years	3	2.1%
55-64 Years	4	2.7%
65 Years and Older	7	4.8%

Data presented in this report includes both confirmed and probable cases of Shigella reported in Travis County. This report includes completed case investigations only. All data for 2012 are preliminary. The data provided for 2011 was generated on August 8, 2012 and 2012 data was generated on January 9, 2013.

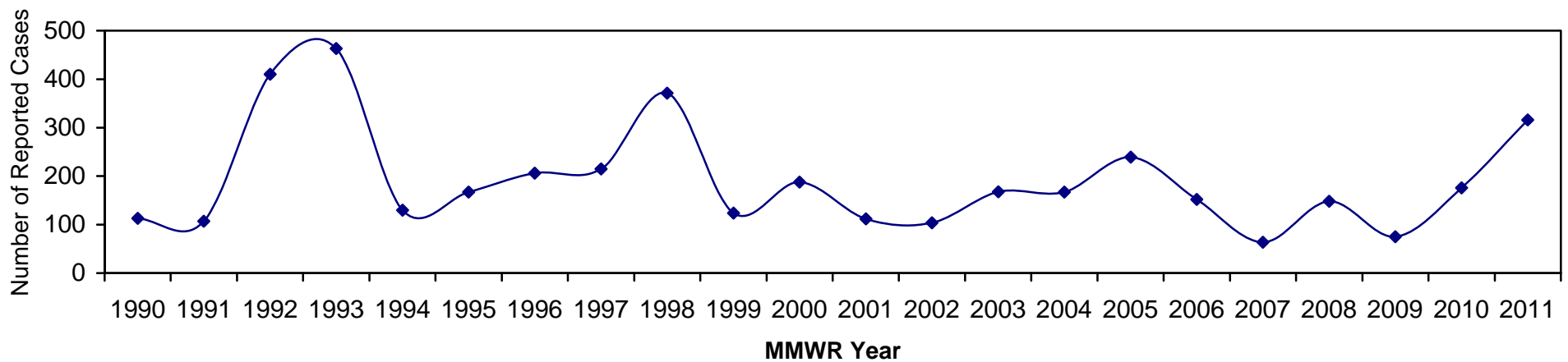


Austin/Travis County Health and Human Services Department Epidemiology and Health Statistics Unit



The number of Shigella cases varies over time in Travis County (Figures 1 and 3). The total number of annual Shigella reports have doubled or nearly doubled each year from 2009 to 2011 (Figure 3). The number of Shigella reports in 2011 (n=316) is the highest it has been in more than a decade (Figures 1 and 3). Early 2012 data is available and currently shows a marked decrease (Figure 2). However, data is preliminary and results should be interpreted with caution. The true impact of Shigella on the community will be determined from finalized data.

Figure 1. Travis County Reported Cases of Shigella by Year 1990 - 2011^{1,2}





Austin/Travis County Health and Human Services Department Epidemiology and Health Statistics Unit



Figure 2. Travis County Reported Cases of Shigella by Month of Report 2008 - 2012^{1,3}

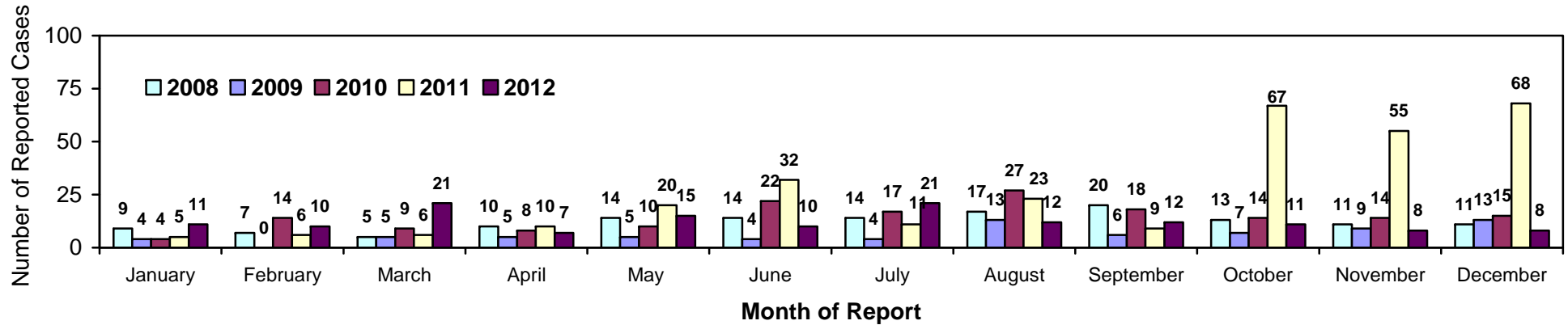
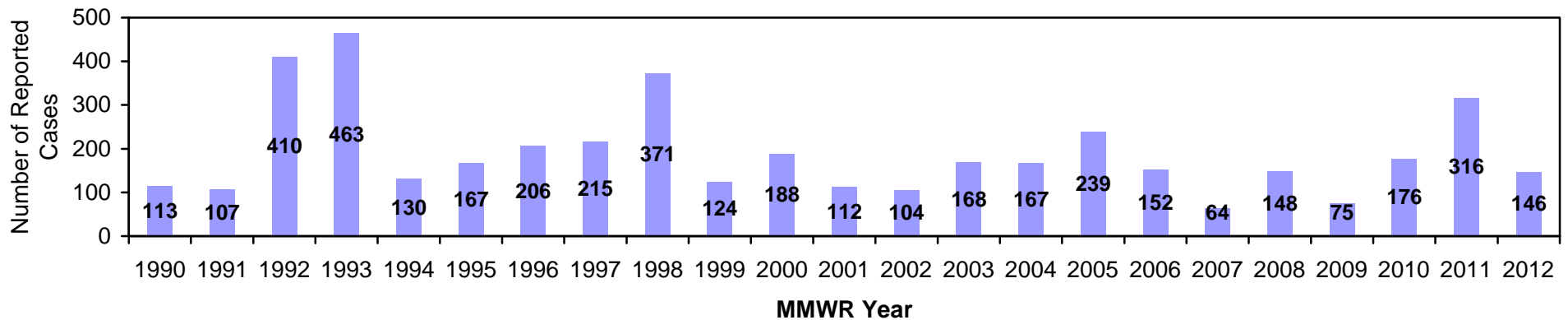


Figure 3. Travis County Reported Cases of Shigella by Year 1990 – 2012^{1,2}

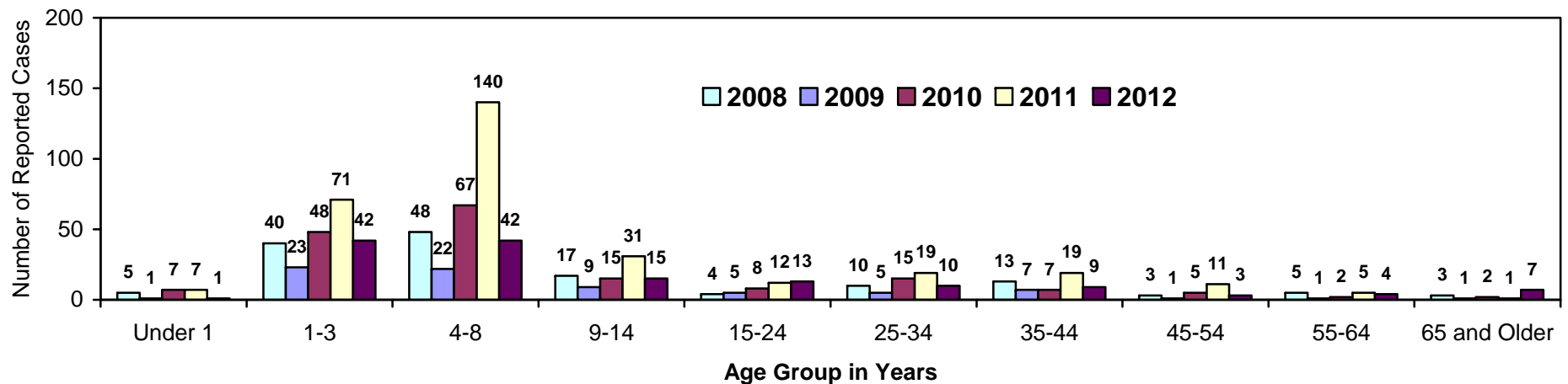




Austin/Travis County Health and Human Services Department
Epidemiology and Health Statistics Unit



Figure 4. Travis County Reported Cases of Shigella by Age Group 2008 – 2012^{1,2}



For additional information about Shigella:

<http://www.cdc.gov/nczved/divisions/dfbmd/diseases/shigellosis/#germ>

For additional information about hand washing:

<http://www.cdc.gov/handwashing/>

¹ Data provided for 2012 is preliminary data. The data provided for 2011 was generated on August 8, 2012 and 2012 data was generated on January 9, 2013.

² Yearly data provided are based on MMWR year and not calendar year.

³ Data by month of report may not include all cases for that MMWR year. All data are pulled by MMWR year and not calendar year. As a result, there are some instances in which cases are reported with a MMWR year in one year but the actual report was received the following calendar year. Consequently, the annual totals may not equal the exact total number of cases when each month's totals are summed.