



**Austin/Travis County Health and Human Services Department  
Epidemiology and Health Statistics Unit**



**Travis County Shigella Cases**

**2011 Shigella Case Counts**

Total	319	100.0%
Confirmed	262	82.1%
Probable	57	17.9%

**Gender Distribution**

Male	160	50.2%
Female	159	49.8%

Median Age: 6 Years  
Age Range: 9 months - 76 Years

**Age Distribution**

Under 1 Year	7	2.2%
1-3 Years	71	22.3%
4-8 Years	139	43.6%
9-14 Years	32	10.0%
15-24 Years	12	3.8%
25-34 Years	22	6.9%
35-44 Years	19	6.0%
45-54 Years	11	3.4%
55-64 Years	5	1.6%
65 Years and Older	1	0.3%

Data presented in this report includes both confirmed and probable cases of Shigella reported in Travis County. This report only includes cases in which investigations are complete, any pending reports and investigations for Shigella are not included. All data for 2011 and 2012 is preliminary and generated on February 8, 2012.

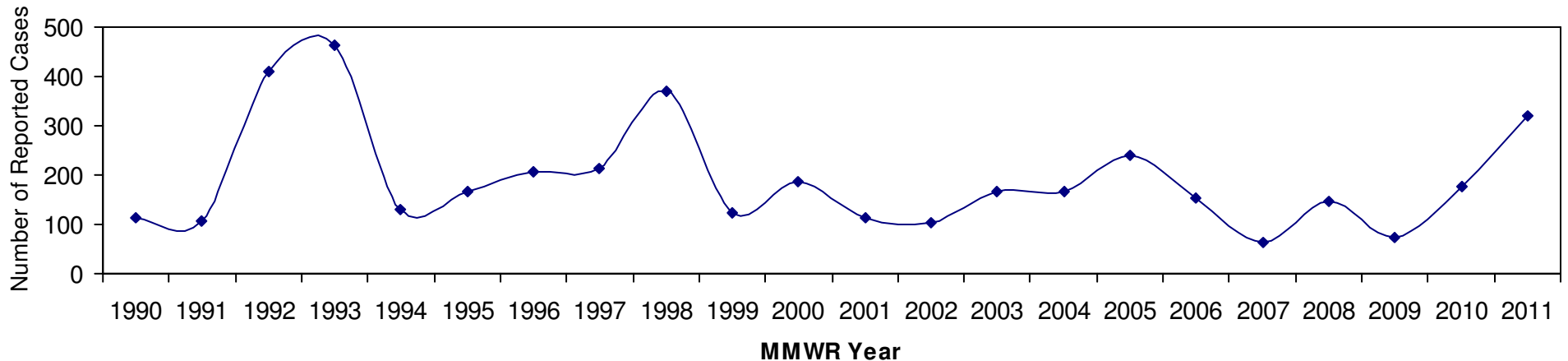


## Austin/Travis County Health and Human Services Department Epidemiology and Health Statistics Unit



The number of Shigella cases varies over time in Travis County (Figure 1 and Figure 5). The total number of annual Shigella reports have doubled or nearly doubled each year since 2009 (Figure 5). In 2011, the months of May and June show mild increases in the number of Shigella reports with sustained increases in October through December (Figure 3). When reviewing the dates of onset of illness, or when people first got sick with shigellosis, increases occurred in April 2011 and then again in August 2011 (Figure 4). Individuals most impacted by Shigella in 2011 seem to be children ages 1-3 and 4-8 years old. Overall cases of Shigella by gender are almost exactly even. There are 159 cases of females (49.8%) and 160 cases of males (50.2%). More detailed review of the data shows, however, differences by age group for each gender. Cases among younger males and older females are reported with more frequency than their similarly aged counterparts (Figure 2). January 2012 data is available and at this time shows a marked decrease (Figure 5). Data this recent often changes, consequently caution should be exercised when analyzing the decrease of data in January of 2012. The number of Shigella reports in 2011 (n=319) is the highest it has been in over a decade (Figure 1 and Figure 5).

**Figure 1. County Reported Cases of Shigella by Year 1990 - 2011<sup>1,2</sup>**

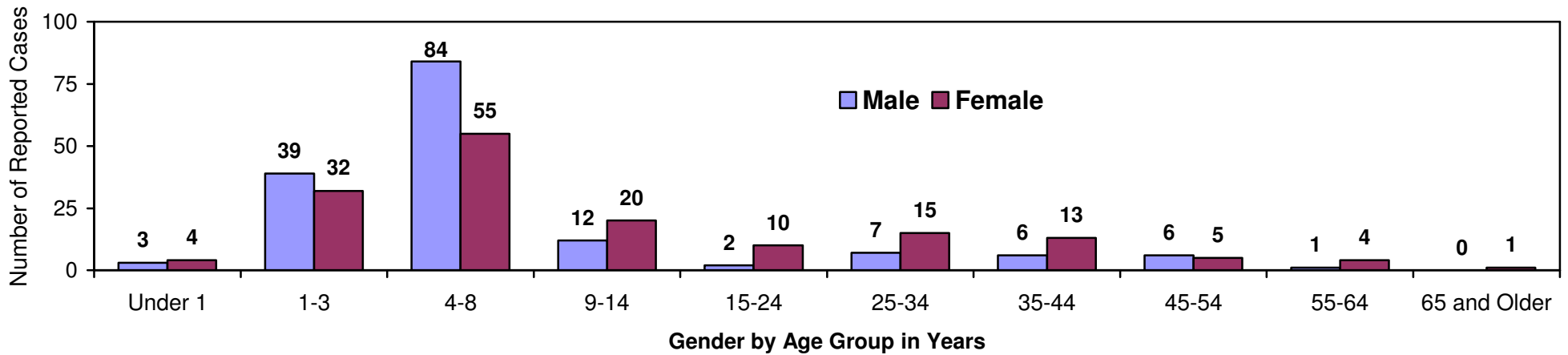




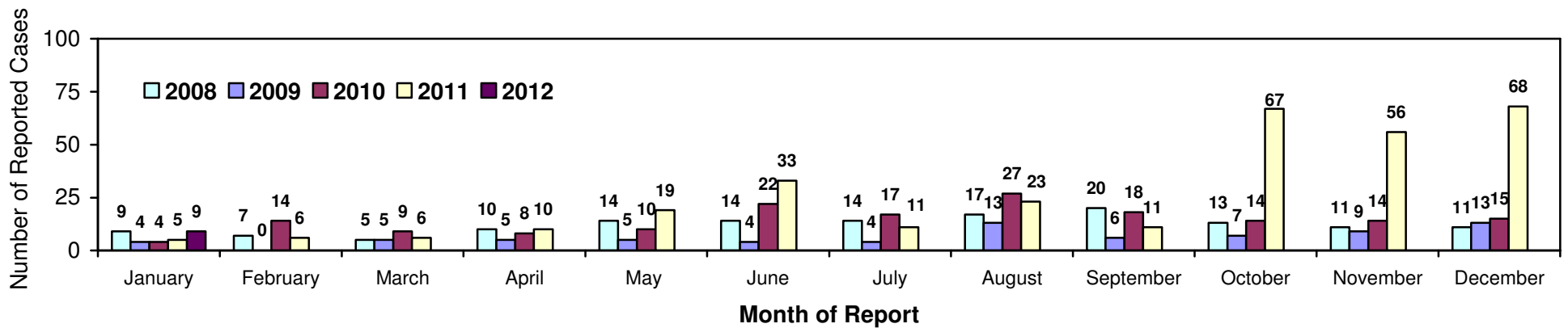
**Austin/Travis County Health and Human Services Department  
Epidemiology and Health Statistics Unit**



**Figure 2. 2011 Travis County Reported Cases of Shigella by Gender and Age Group<sup>1,2</sup>**



**Figure 3. Travis County Reported Cases of Shigella by Month of Report 2008 - 2012<sup>1,3</sup>**

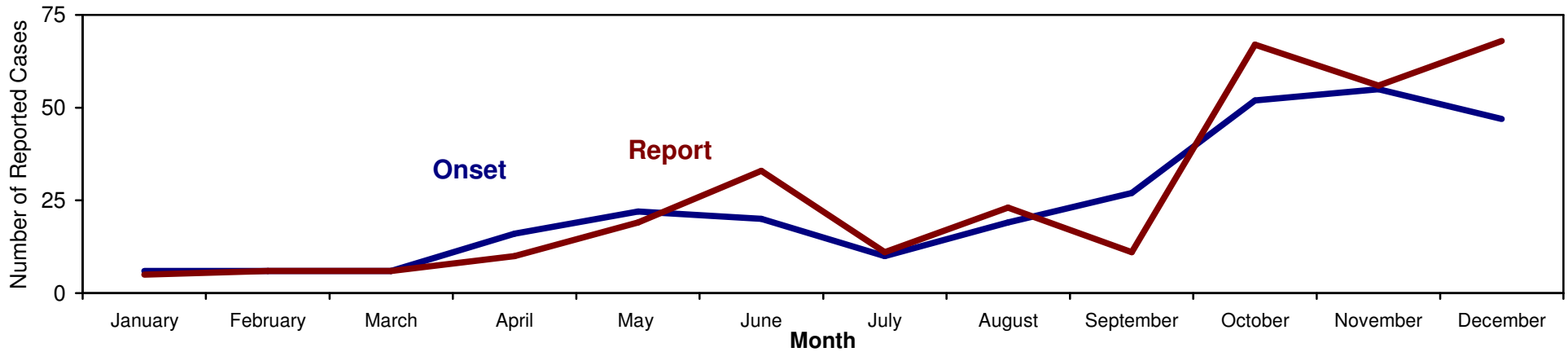




**Austin/Travis County Health and Human Services Department  
Epidemiology and Health Statistics Unit**

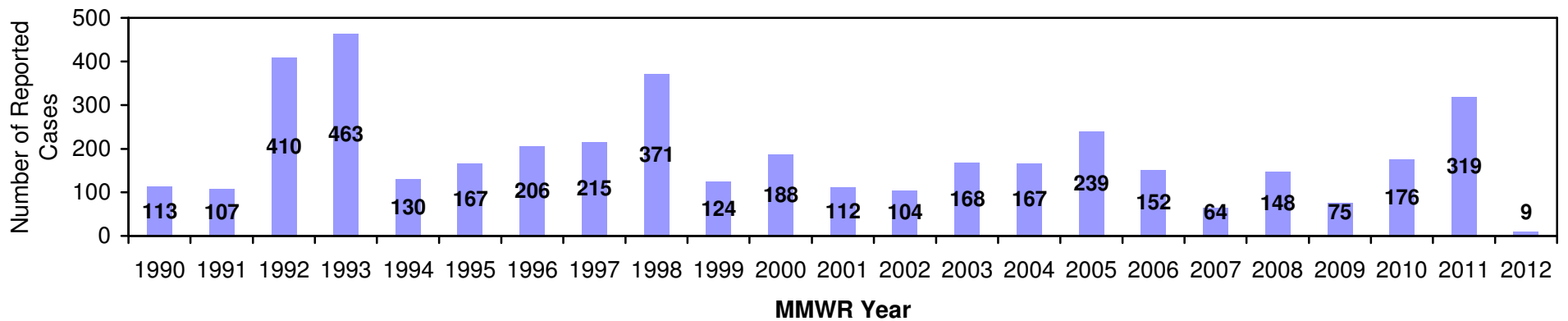


**Figure 4. 2011 Travis County Reported Cases of Shigella by Month of Onset and Month of Report<sup>1,3</sup>**



- Of note, in 2011 10% (n=32) of all cases did not have an onset available to include in the above graph. Any cases with an onset before 2011 are also not included in the above graph.

**Figure 5. Travis County Reported Cases of Shigella by Year 1990 – 2012<sup>1,2</sup>**

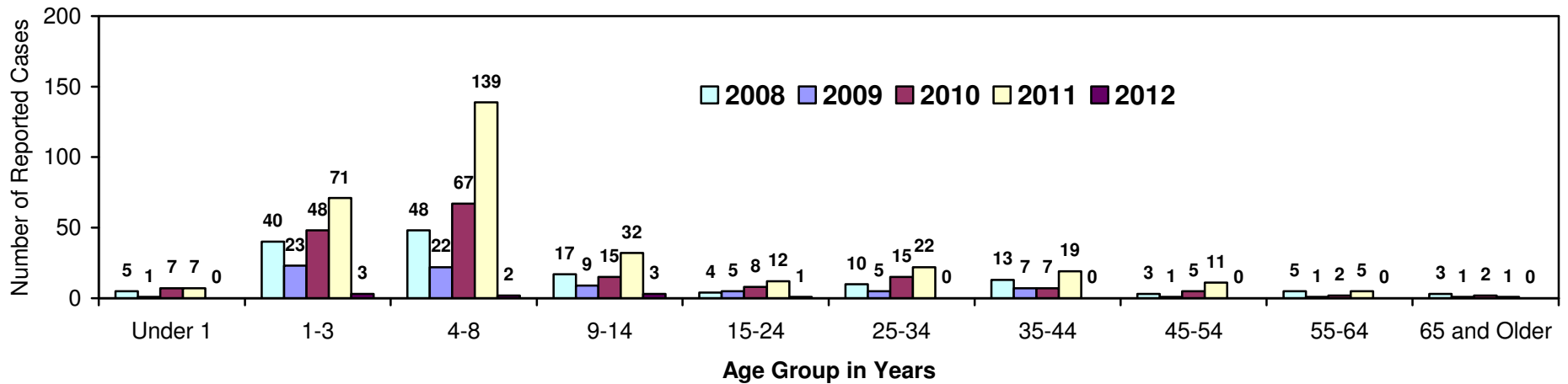




**Austin/Travis County Health and Human Services Department  
Epidemiology and Health Statistics Unit**



**Figure 6. Travis County Reported Cases of Shigella by Age Group 2008 – 2012<sup>1,2</sup>**



For additional information about Shigella:

<http://www.cdc.gov/nczved/divisions/dfbmd/diseases/shigellosis/#germ>

For additional information about handwashing:

<http://www.cdc.gov/handwashing/>

<sup>1</sup> Data provided for 2011 and 2012 are preliminary data. The data provided for 2011 and 2012 is generated on February 8, 2012.

<sup>2</sup> Yearly data provided are based on MMWR year and not calendar year.

<sup>3</sup> Data by month of report may not include all cases for that MMWR year. All data are pulled by MMWR year and not calendar year. As a result, there are some instances in which cases are reported with a MMWR year in one year but the actual report was received the following calendar year. Consequently, the annual totals may not equal the exact total number of cases when each month's totals are summed.