

APPENDIX A.

JURISDICTION LEVEL MAPS

APPENDIX A.

Jurisdiction-Level Maps

AUSTIN

Figure 1.
AUSTIN – Percent Decline in African American Residents
Residents by Census Tract, 2010 to 2016

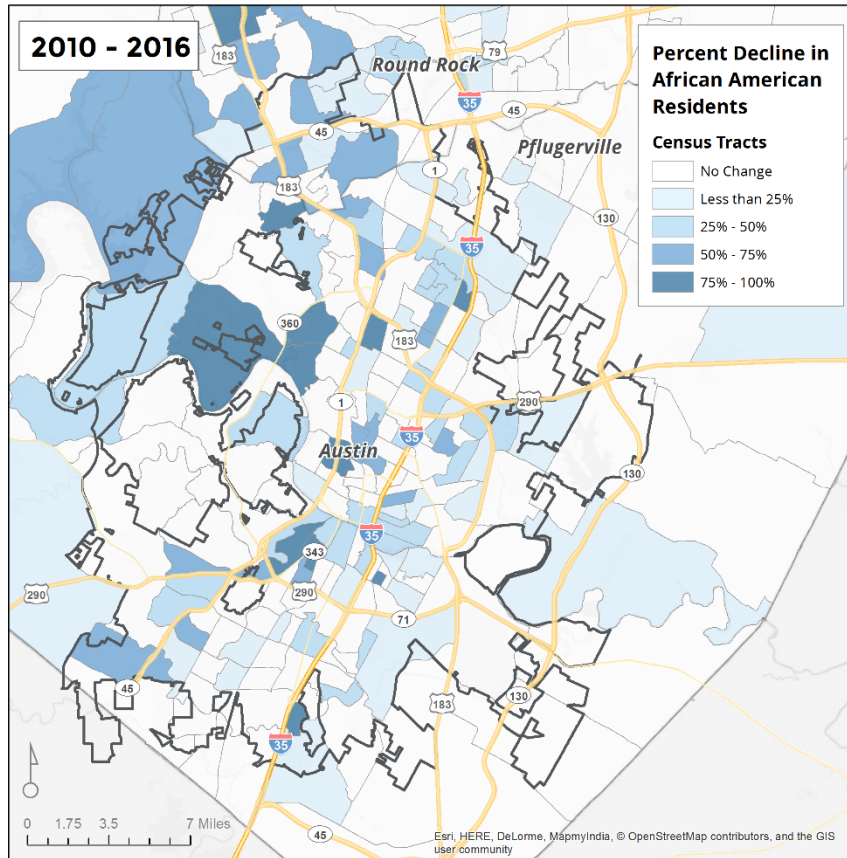
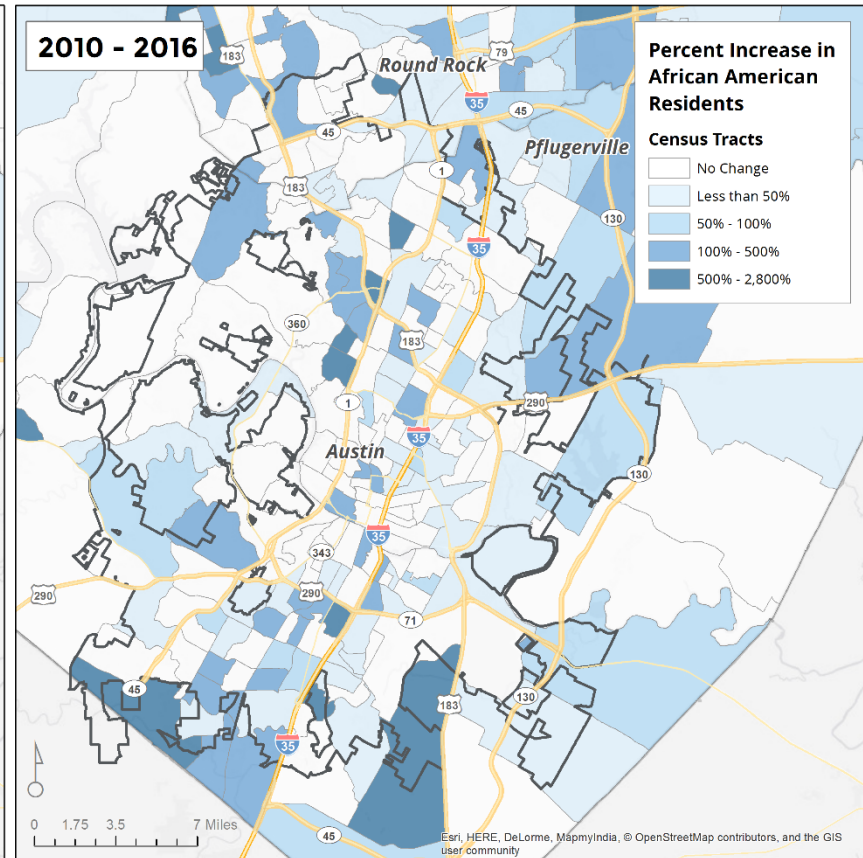


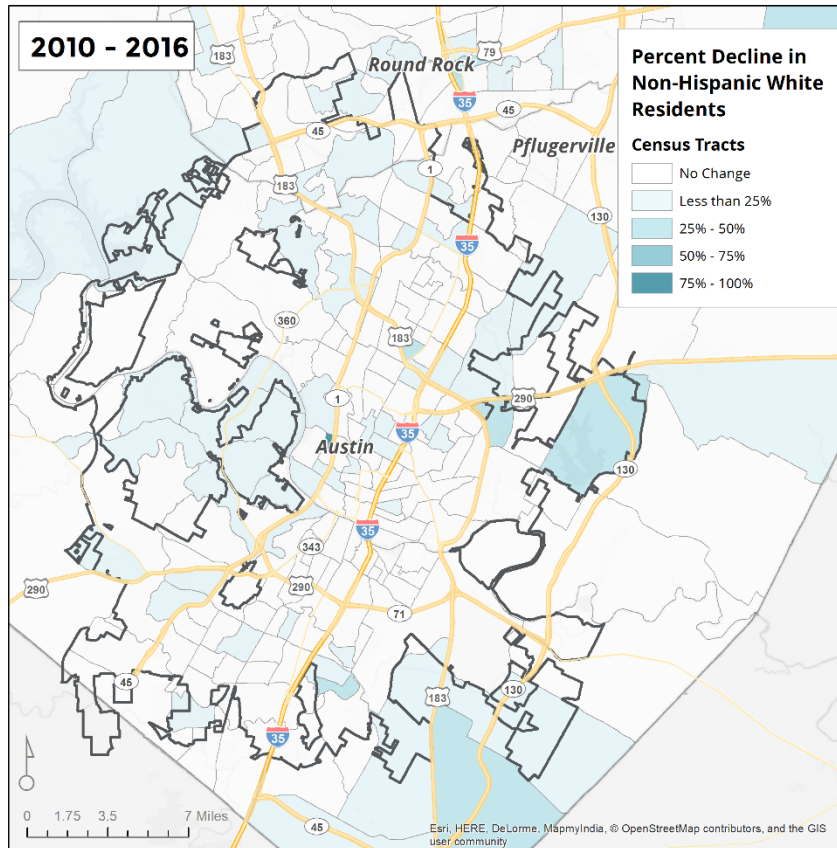
Figure 2.
AUSTIN - Percent Increase in African American
Residents by Census Tract, 2010 to 2016



ROOT POLICY RESEARCH

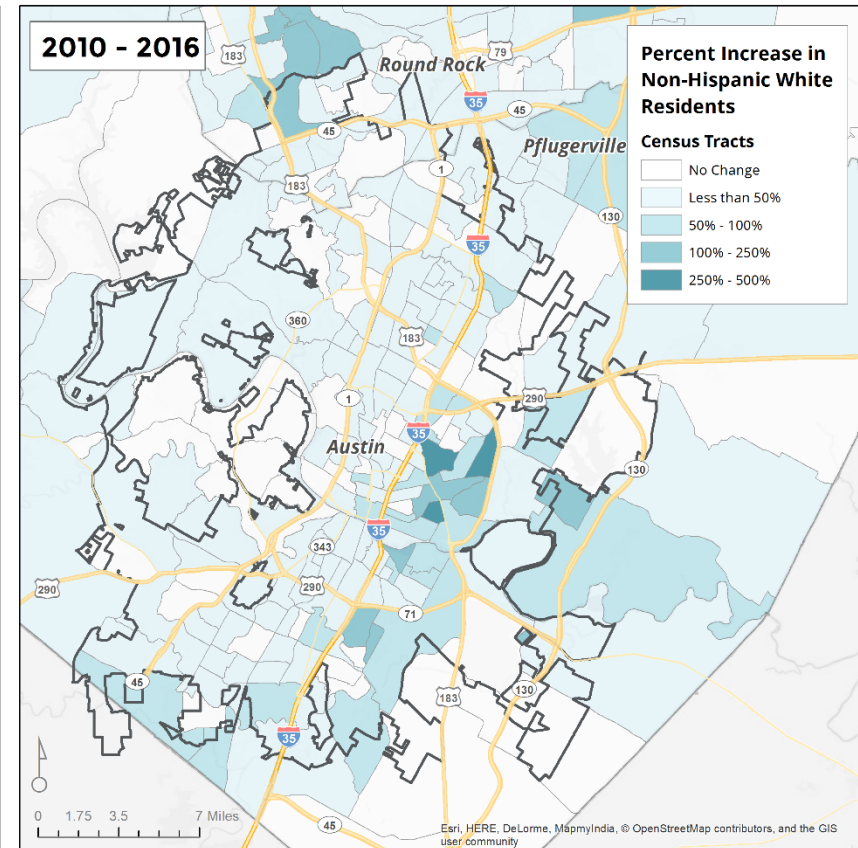
PAGE 3

Figure 5.
AUSTIN – Percent Decline in Non-Hispanic White Residents by Census Tract, 2010 to 2016



Source: American Community Survey, 2012-2016.

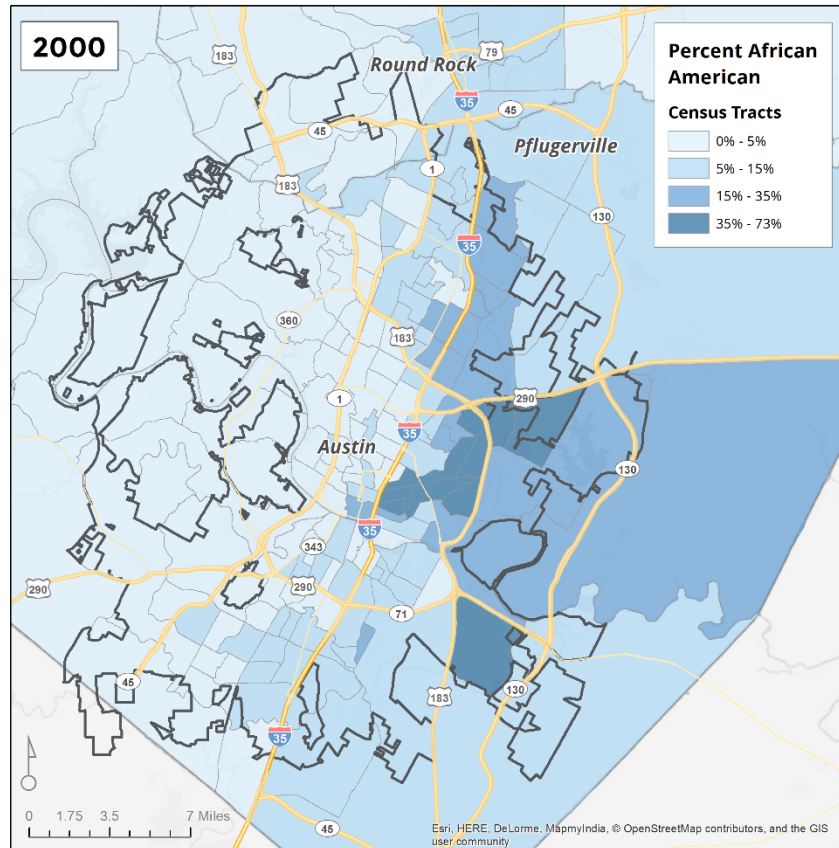
Figure 6.
AUSTIN – Percent Increase in Non-Hispanic White Residents by Census Tract, 2010 to 2016



Source: American Community Survey, 2012-2016.

Figure 7.

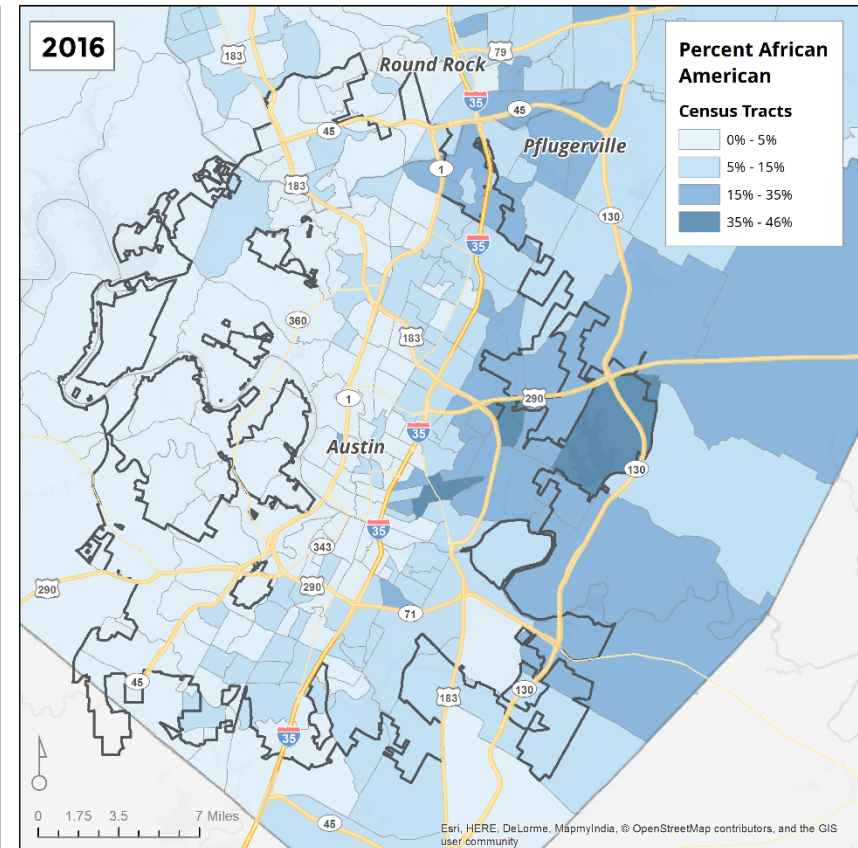
AUSTIN – Percent African American by Census Tract, 2000



Source: 2000 US Census.

Figure 8.

AUSTIN – Percent African American by Census Tract, 2016



Source: American Community Survey, 2012-2016.

Figure 9.
AUSTIN – Percent Hispanic by Census Tract, 2000

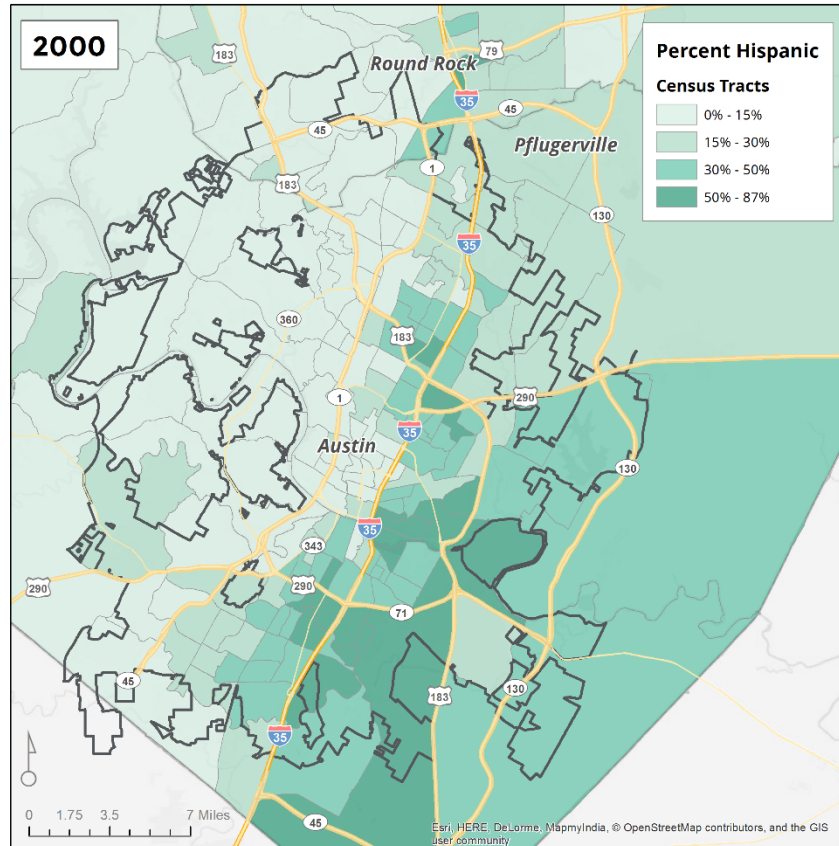


Figure 10.
AUSTIN – Percent Hispanic by Census Tract, 2016

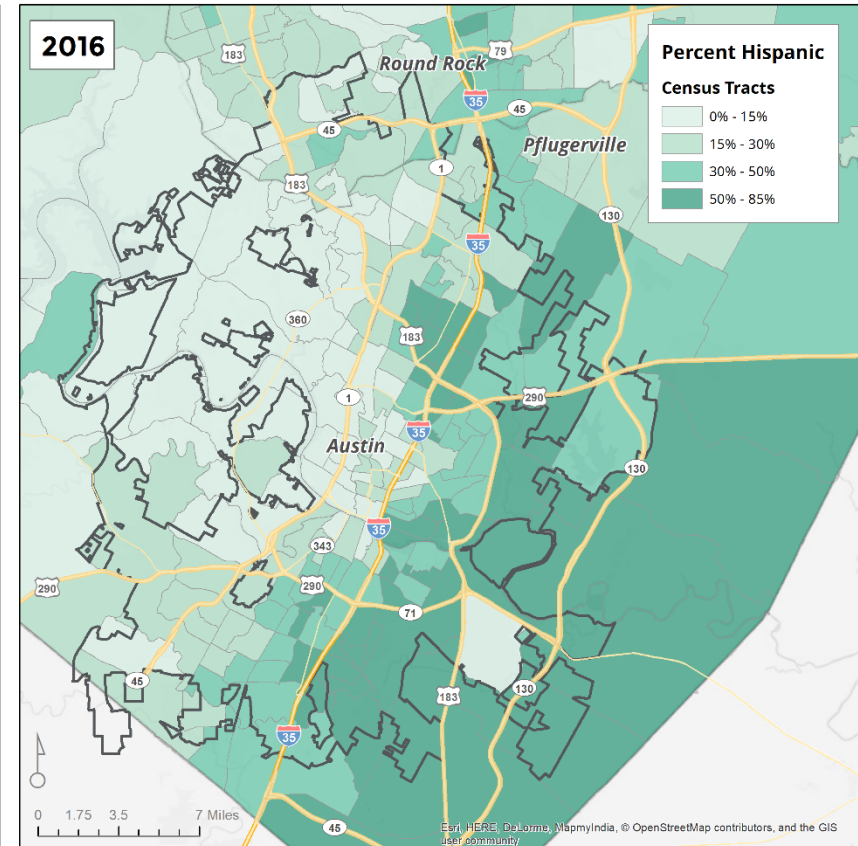
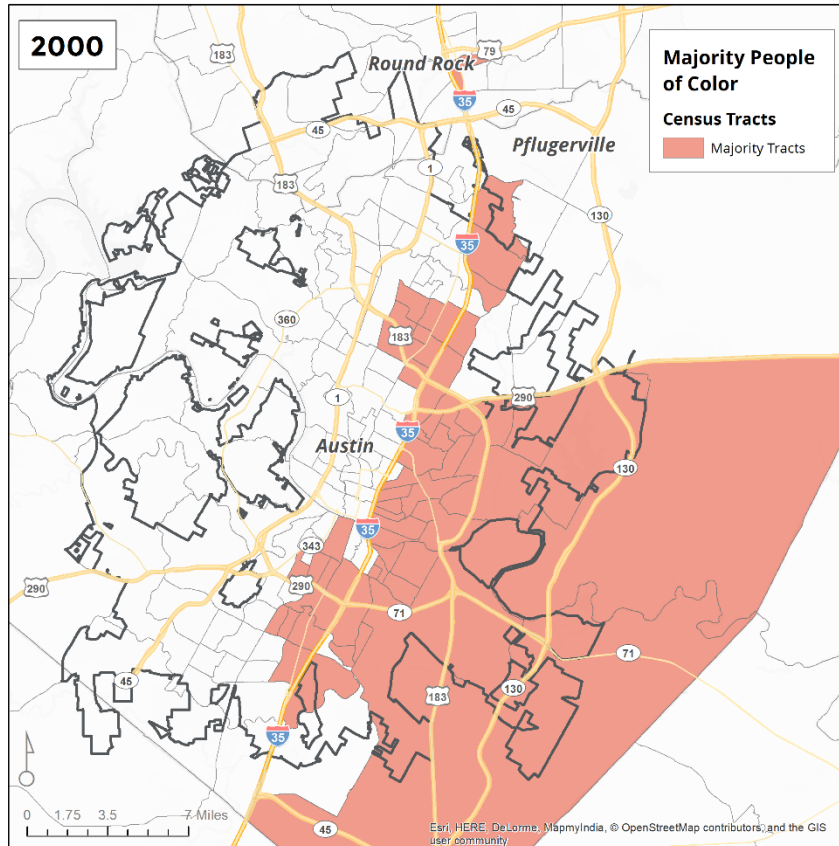
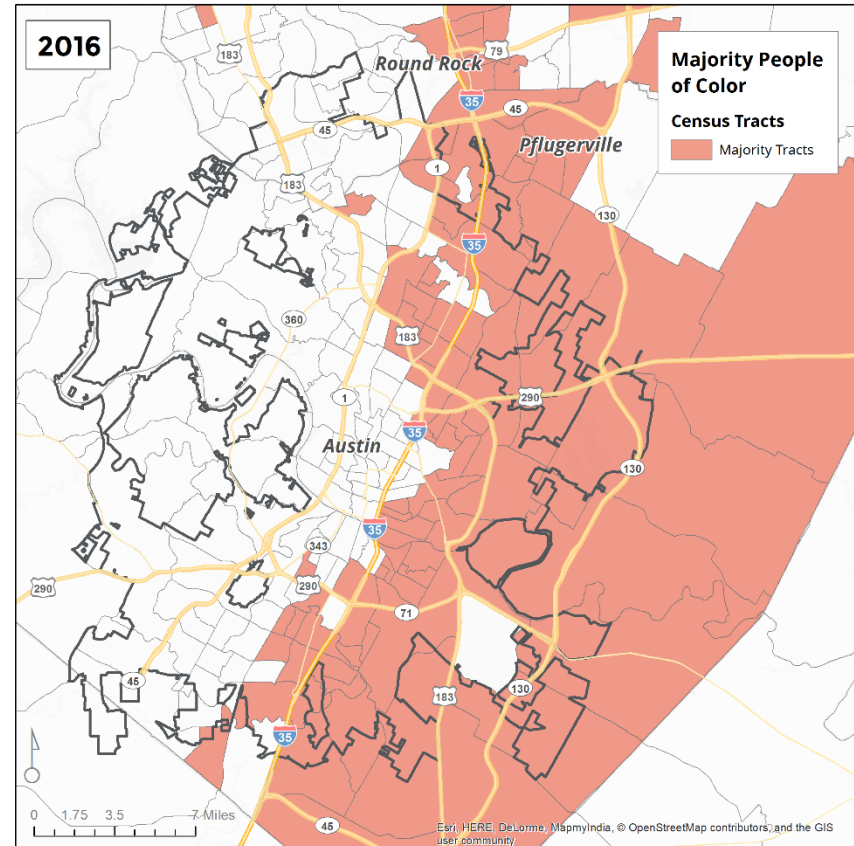


Figure 11.
AUSTIN – Majority People of Color by Census Tract, 2000



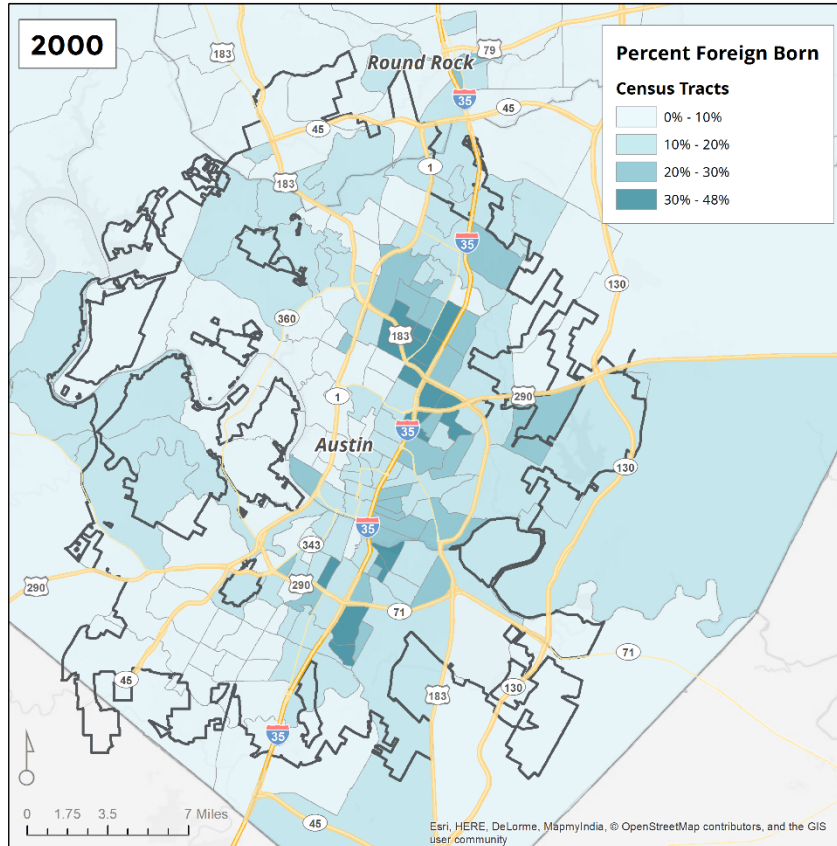
Source: 2000 US Census.

Figure 12.
AUSTIN – Majority People of Color by Census Tract, 2016



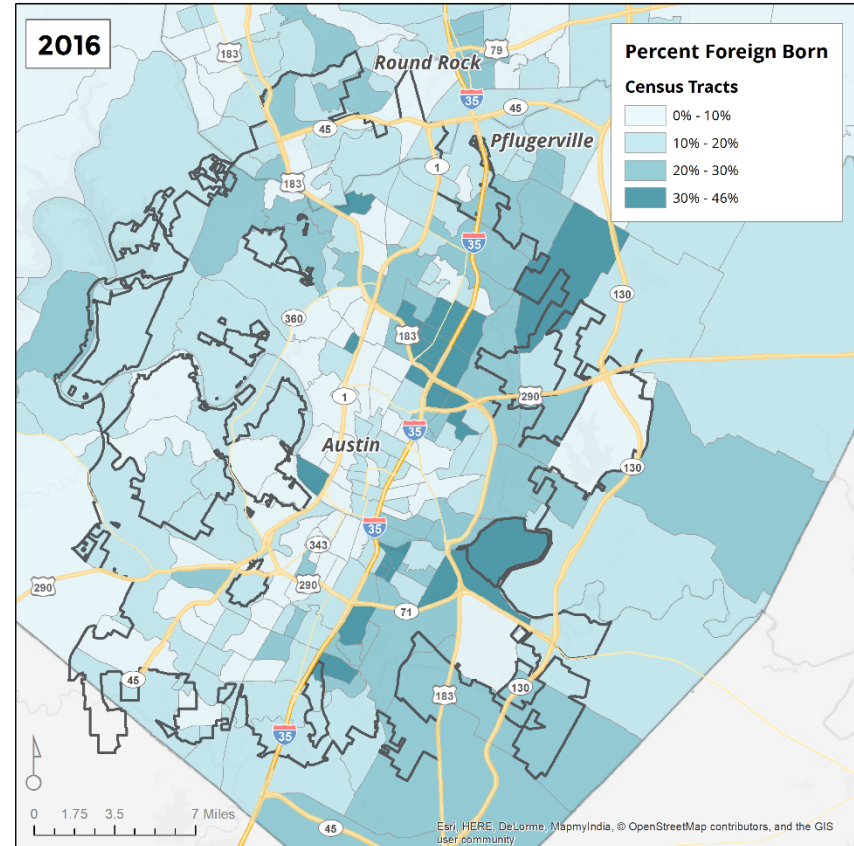
Source: American Community Survey, 2012-2016.

Figure 13.
AUSTIN – Percent Foreign Born by Census Tract, 2000



Source: 2000 US Census.

Figure 14.
AUSTIN – Percent Foreign Born by Census Tract, 2016



Source: American Community Survey, 2012-2016.

Figure 15.
AUSTIN – Percent Limited English Proficiency by Census
Tract, 2000

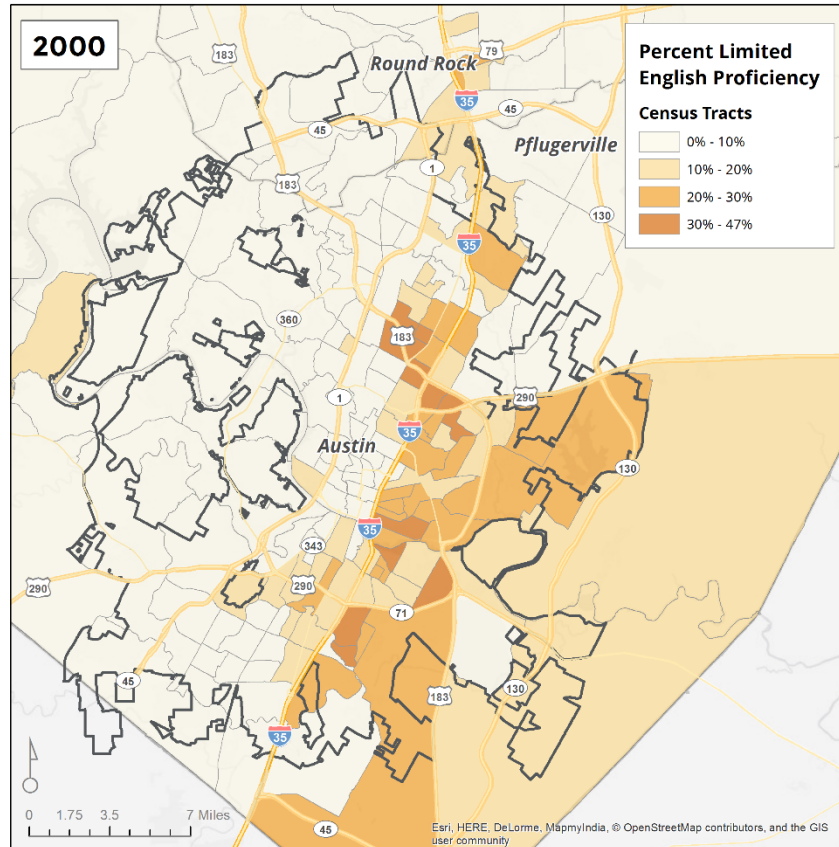


Figure 16.
AUSTIN – Percent Limited English Proficiency by Census
Tract, 2016

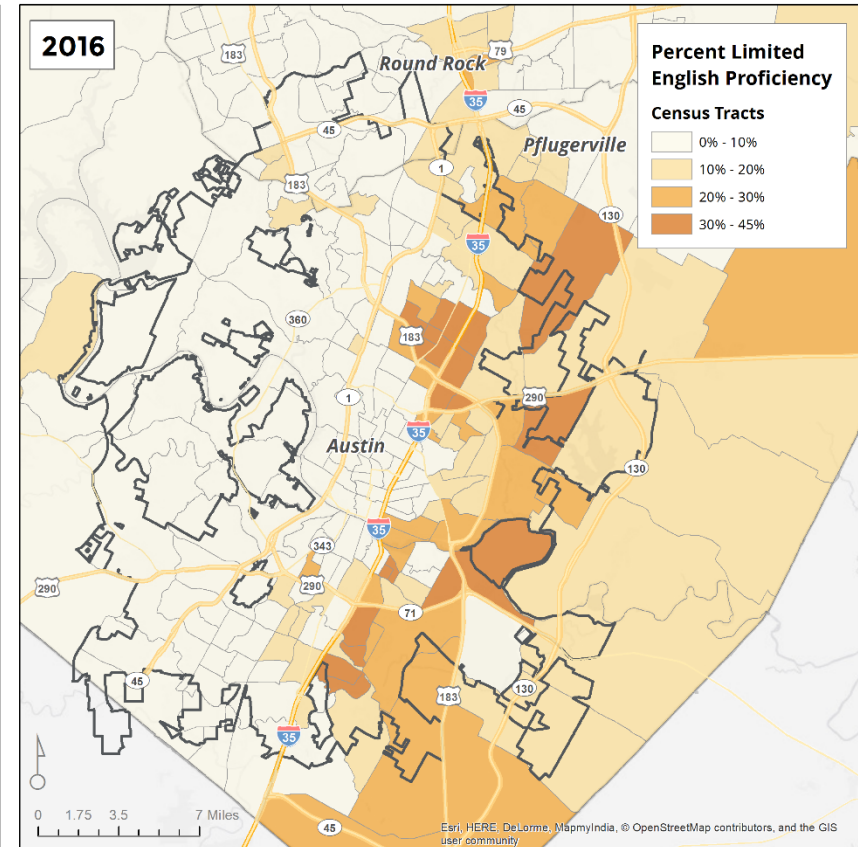
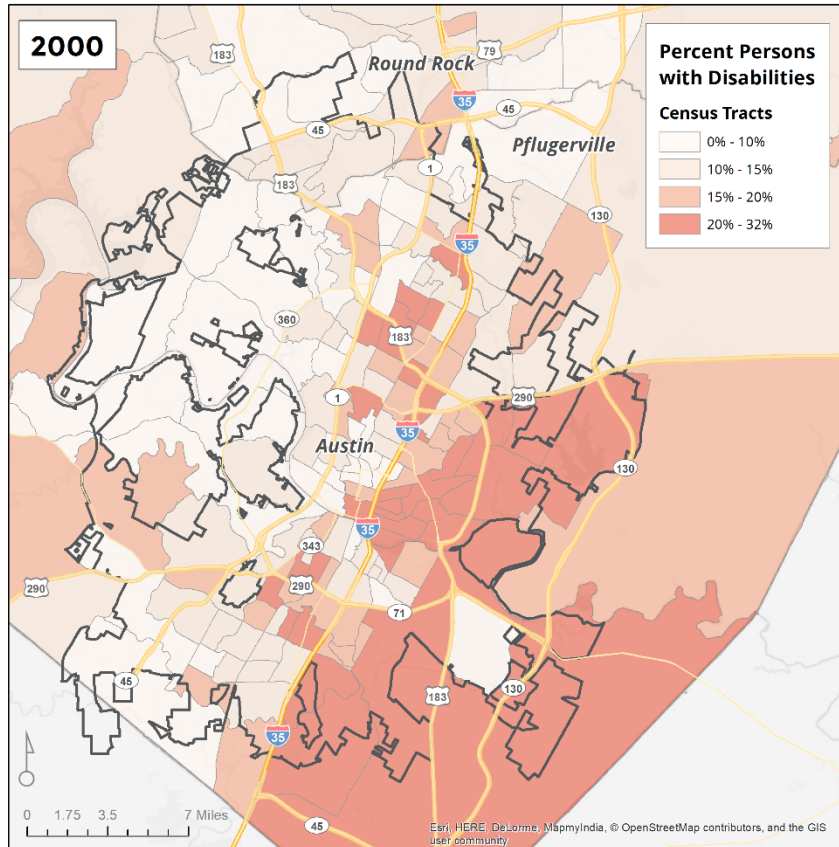


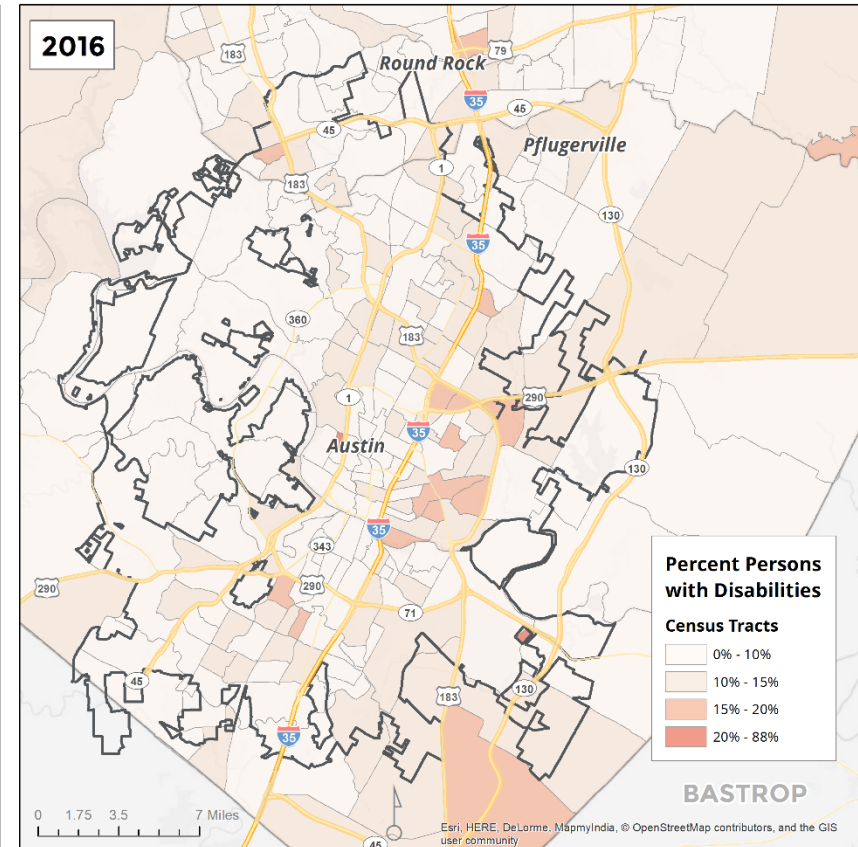
Figure 17.
AUSTIN – Percent Persons with Disabilities by Census Tract, 2000



Note: Includes employment disability, which is not captured in the 2016 map.

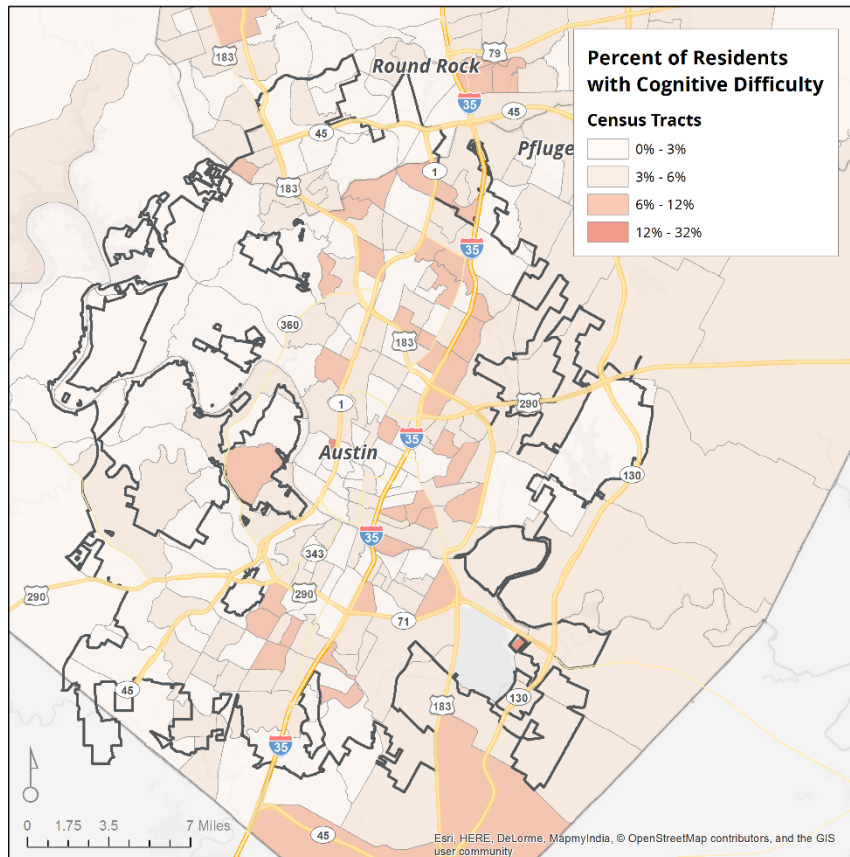
Source: 2000 US Census.

Figure 18.
AUSTIN – Percent Persons with Disabilities by Census Tract, 2016



Source: American Community Survey, 2012-2016.

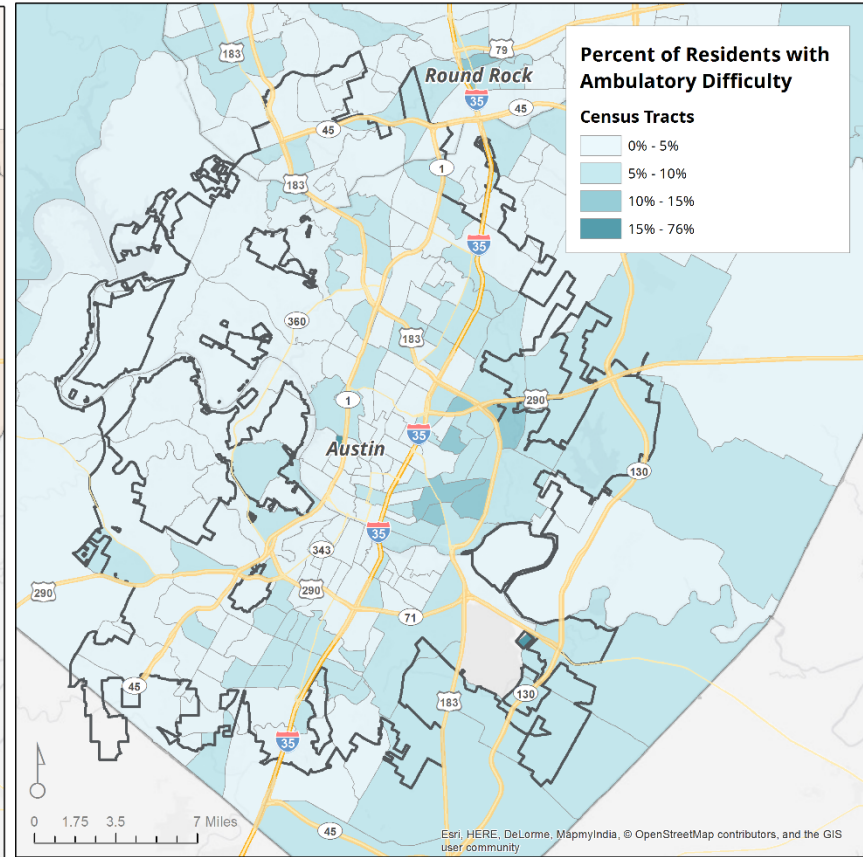
Figure 19.
AUSTIN – Percent of Residents with Cognitive Difficulty,
by Census Tract



Note: The ACS defines cognitive difficulty as having serious difficulty concentrating, remembering, or making decisions due to a physical, mental or emotional condition.

Source: Root Policy Research from the 2013-2017 ACS.

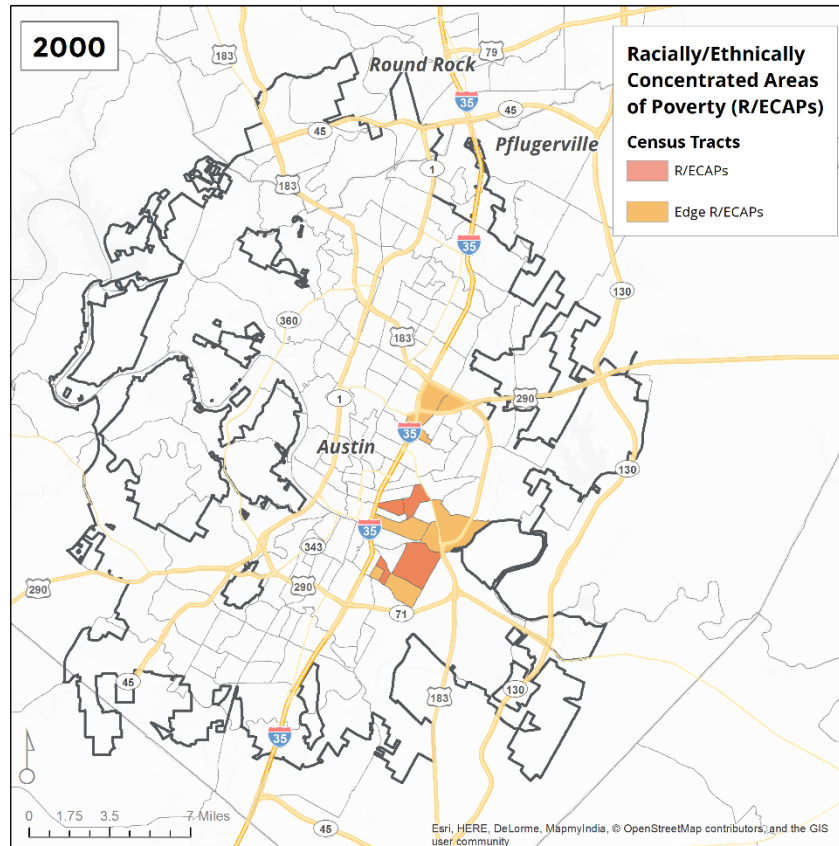
Figure 20.
AUSTIN – Percent of Residents with Ambulatory Difficulty,
by Census Tract



Note: The ACS defines ambulatory difficulty as having serious difficulty walking or climbing stairs.

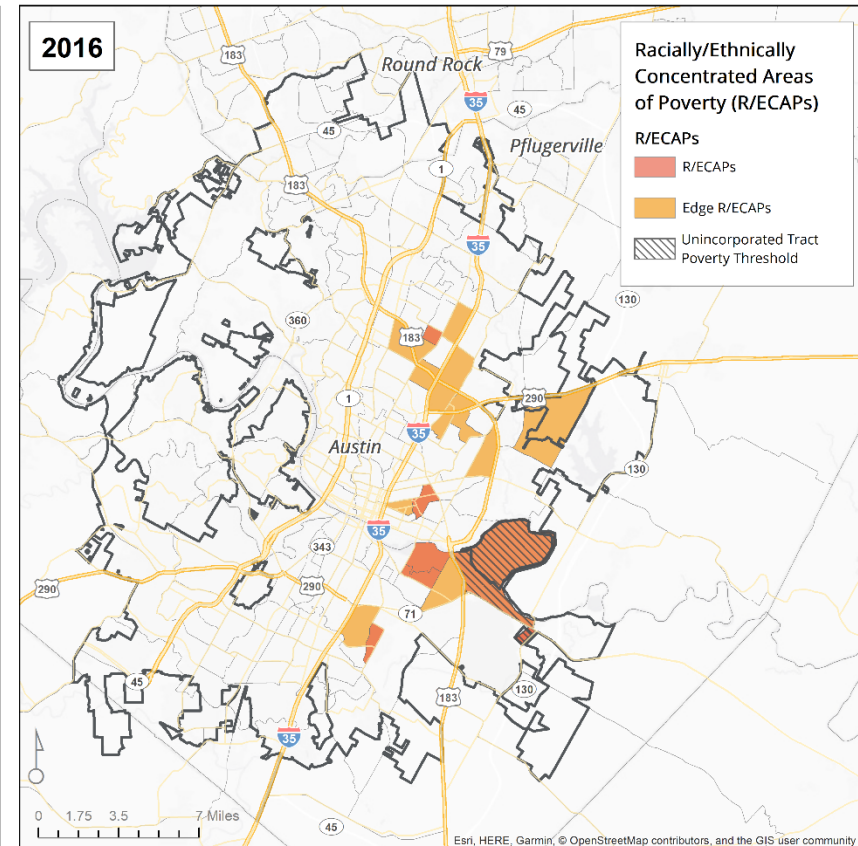
Source: Root Policy Research from the 2013-2017 ACS.

Figure 21.
AUSTIN – R/ECAPS and Edge R/ECAPS, 2000



Source: 2000 US Census.

Figure 22.
AUSTIN – R/ECAPS and Edge R/ECAPS, 2016



Note: The unincorporated tract poverty threshold uses an alternative poverty rate of 36% for the R/ECAP definition, which is three times the average of the poverty rate of fully unincorporated tracts.

Source: American Community Survey, 2012-2016.

Figure 23.
AUSTIN – Percent Poverty by Census Tract, 2000

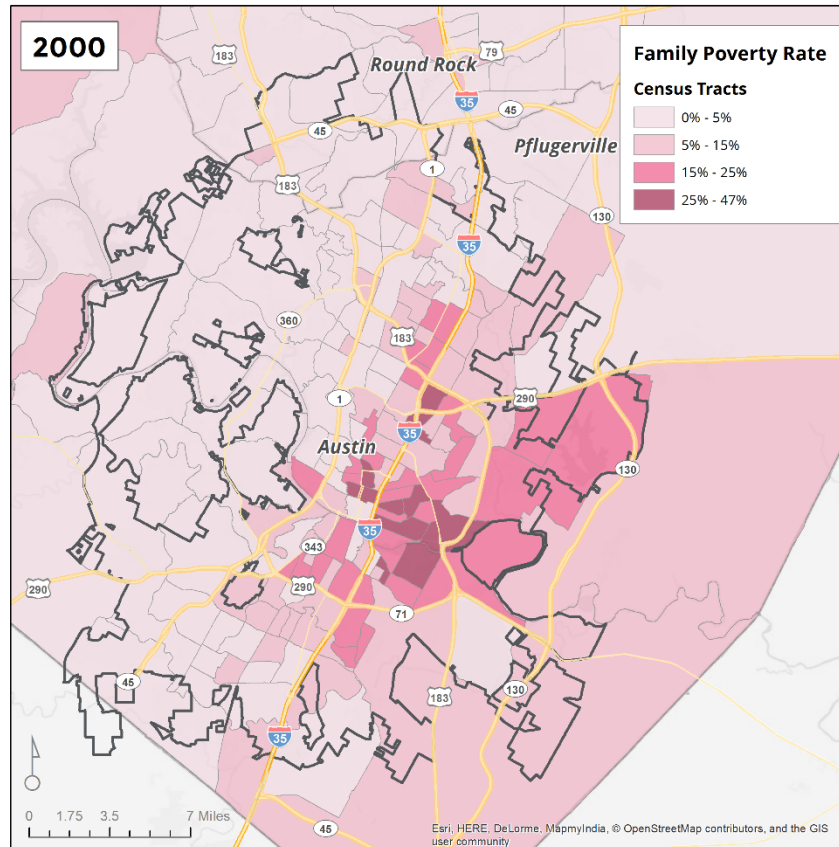


Figure 24.
AUSTIN – Percent Poverty by Census Tract, 2016

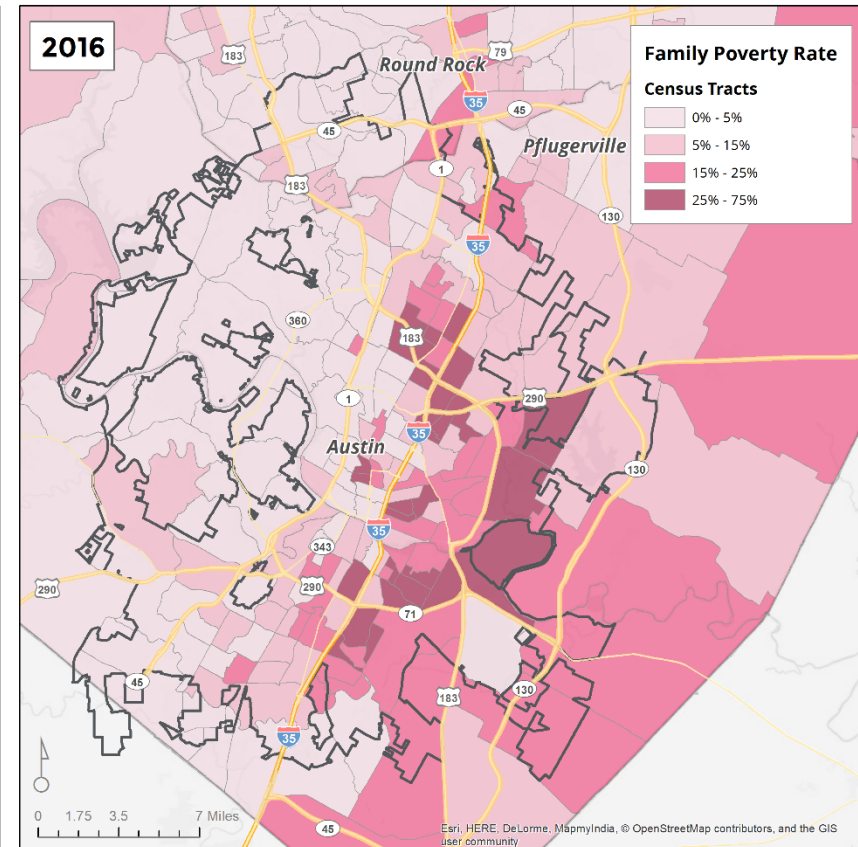


Figure 25.
AUSTIN – Percent African American Ownership, 2000

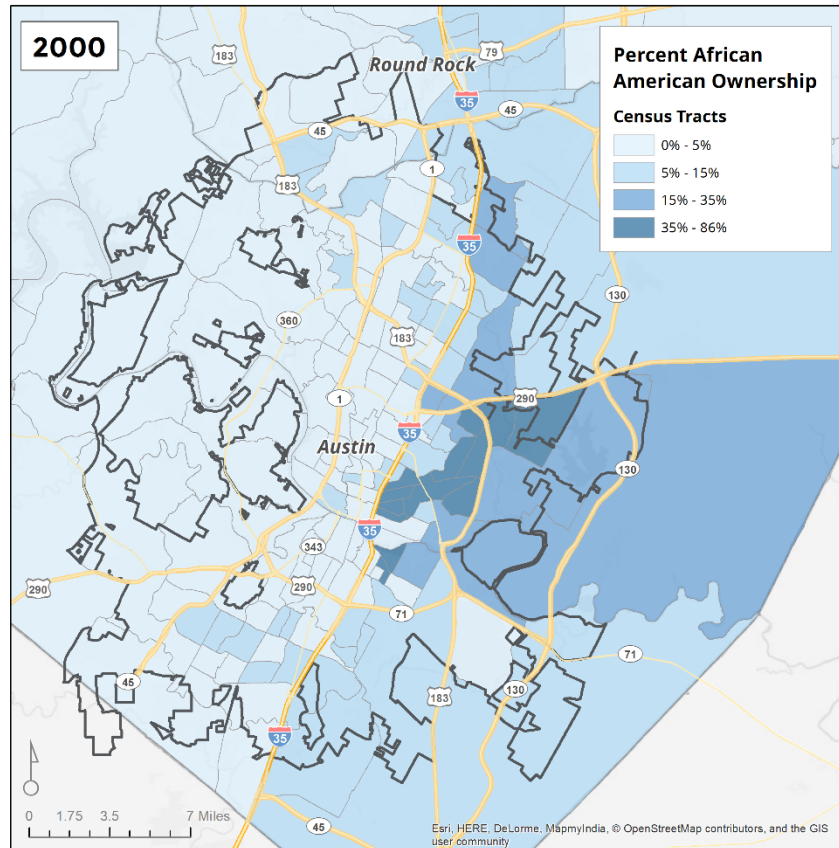


Figure 26.
AUSTIN – Percent African American Ownership, 2016

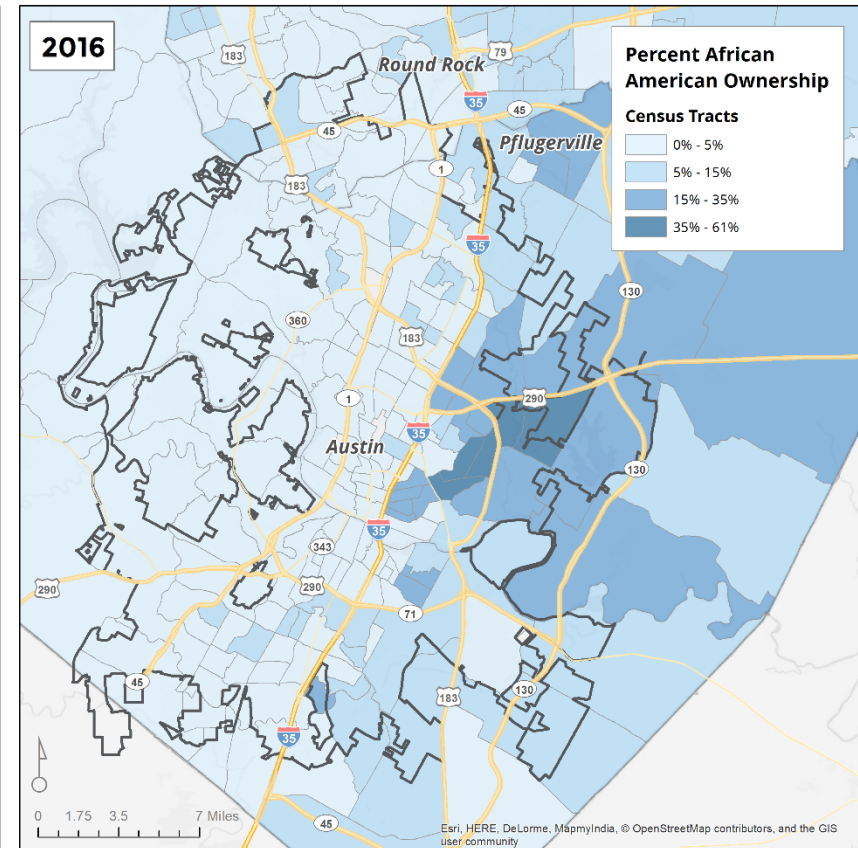
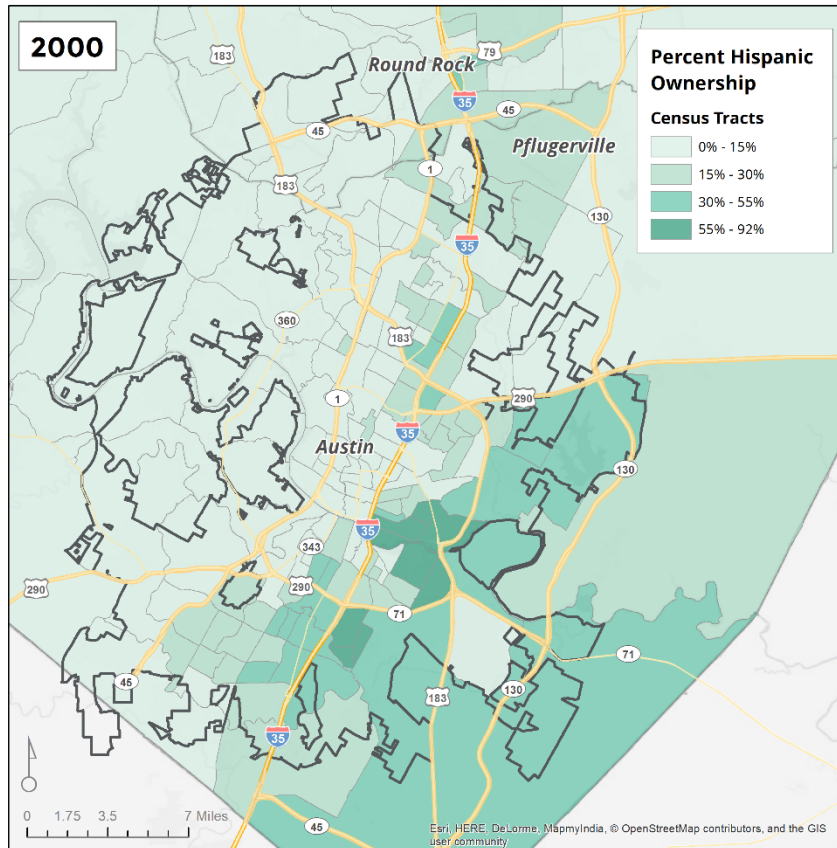
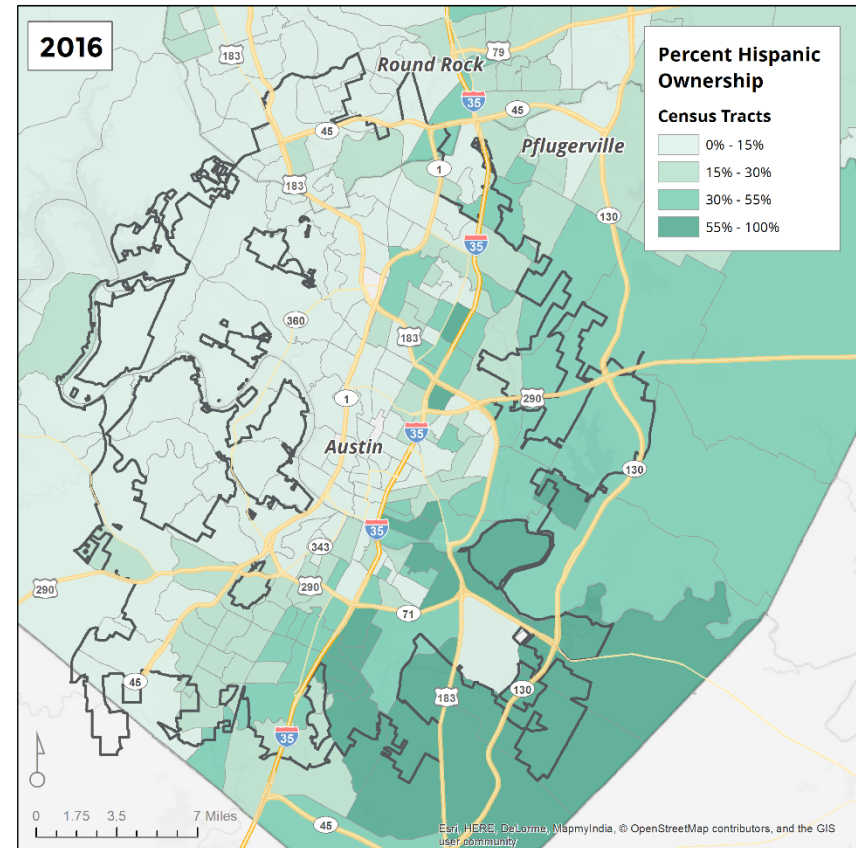


Figure 27.
AUSTIN – Percent Hispanic Ownership, 2000



Source: 2000 US Census.

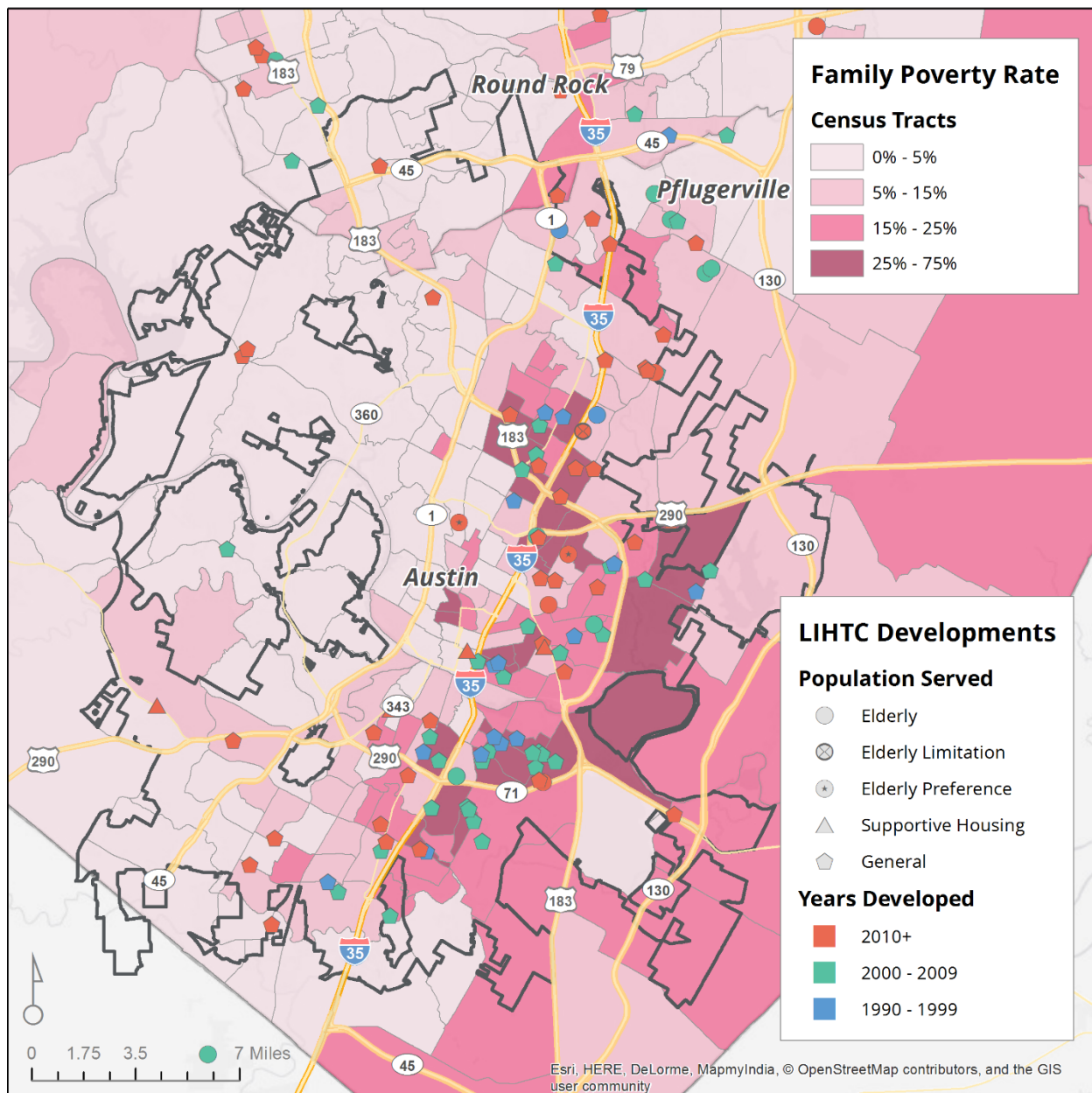
Figure 28.
AUSTIN – Percent Hispanic Ownership, 2016



Source: American Community Survey, 2012-2016

Figure 29.

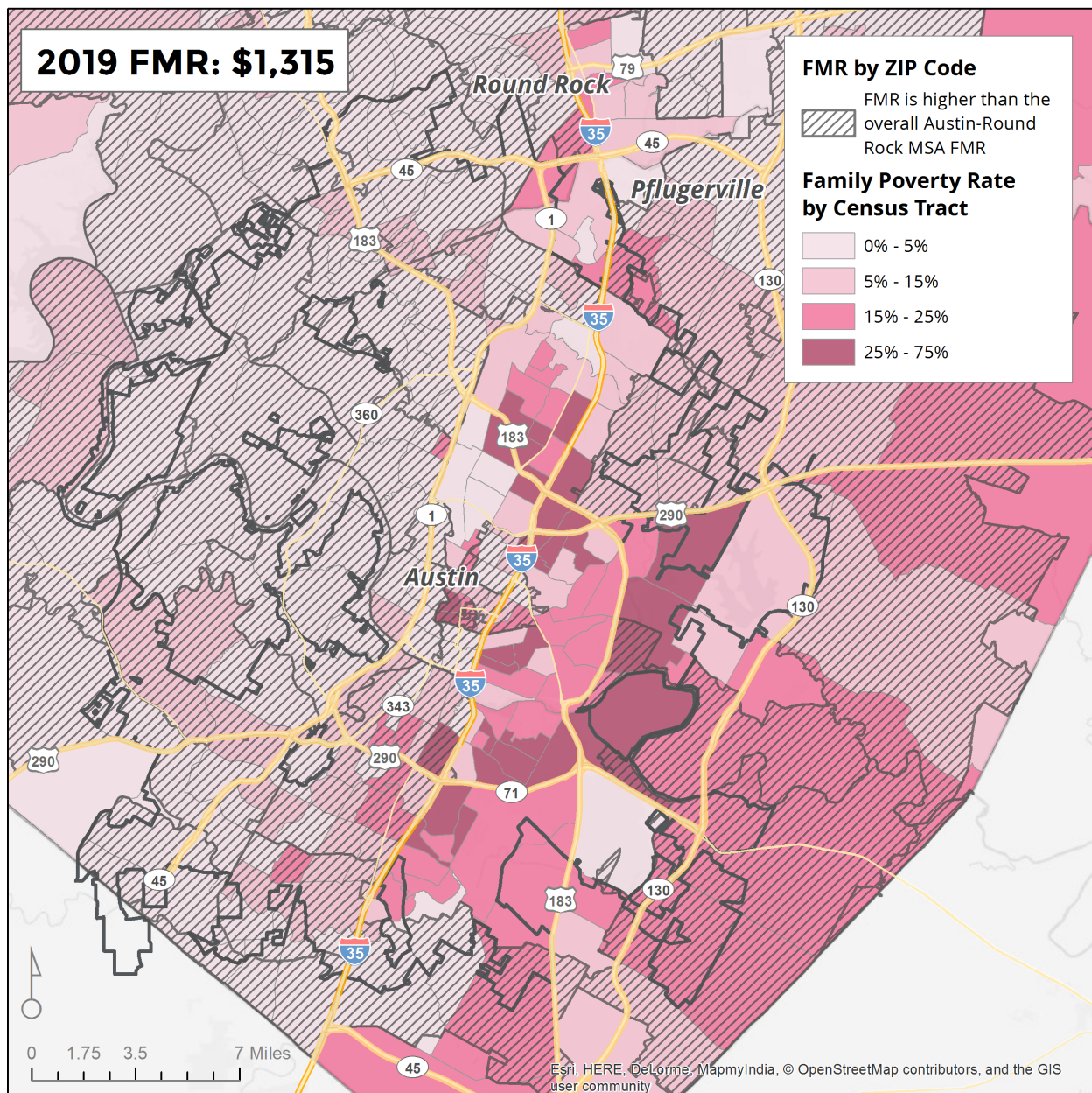
AUSTIN – Low-Income Housing Tax Credit (LIHTC) Developments and Poverty Rate by Census Tract, 2016 (Poverty) and 2018 (LIHTC)



Source: TDHCA, ACS 2012-2016.

Figure 30.

AUSTIN – Small Area Fair Market Rents (FMR) and Poverty Rates by Census Tract, 2016 (Poverty) and 2019 (FMR)



Note: The 2019 2-bedroom FMR for the Austin-Round Rock area is \$1,315. The crosshatch indicates a ZIP code where the zip code FMR is higher than metro wide FMR.

Source: www.huduser.org; Fair Market Rent database.