

## APPENDIX A.

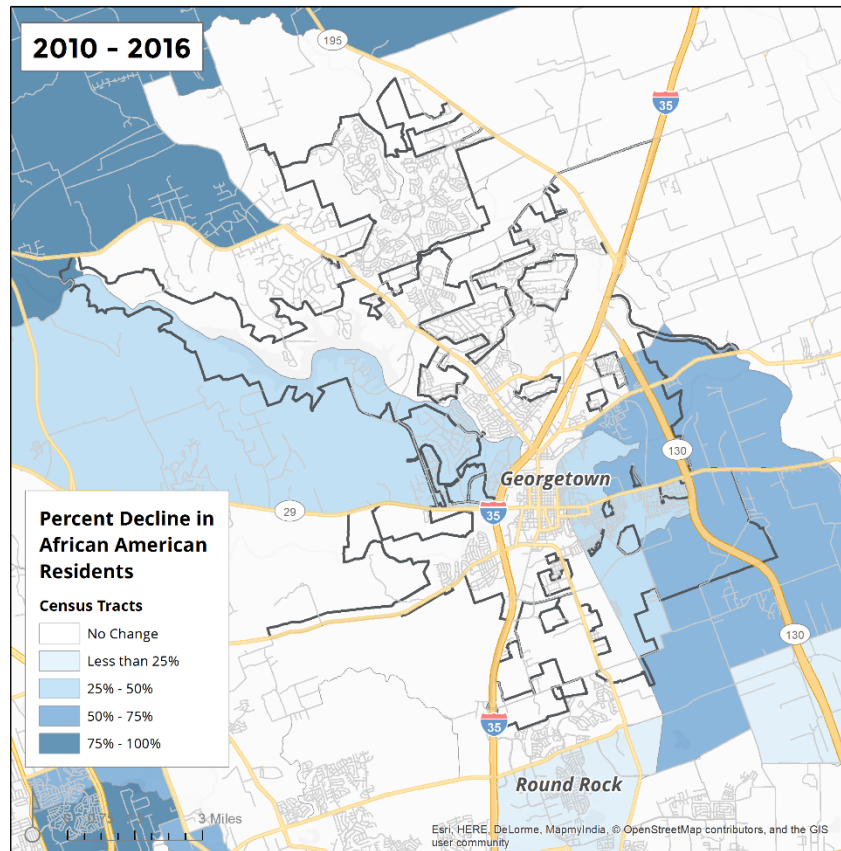
---

### JURISDICTION LEVEL MAPS

# GEORGETOWN

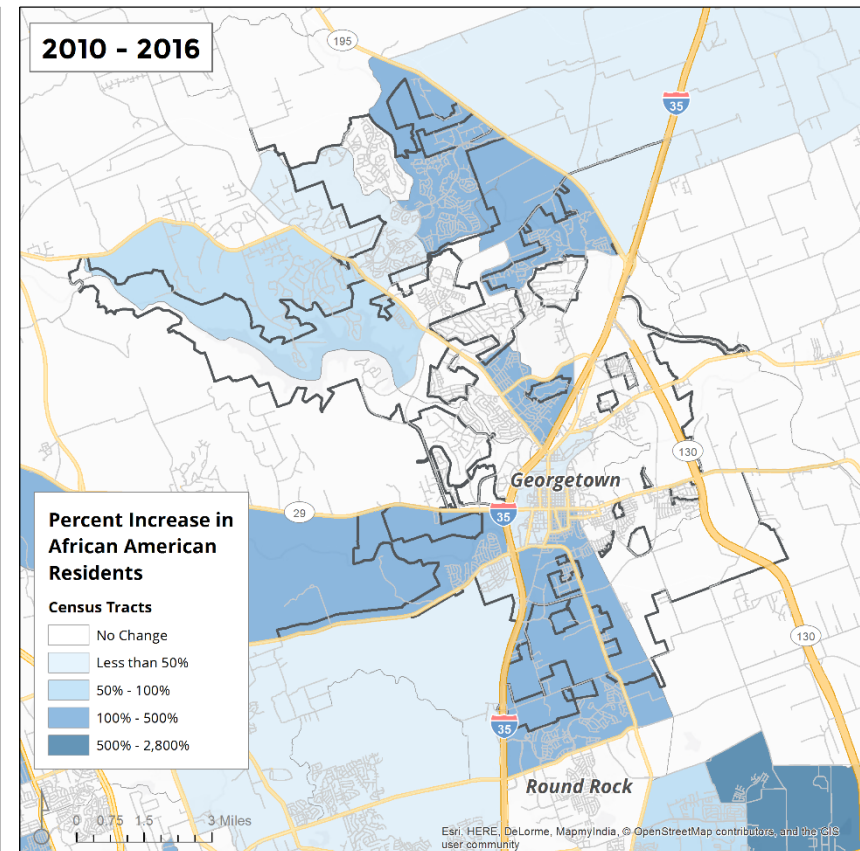
---

**Figure 1.**  
**GEORGETOWN – Percent Decline in African American Residents by Census Tract, 2010 to 2016**



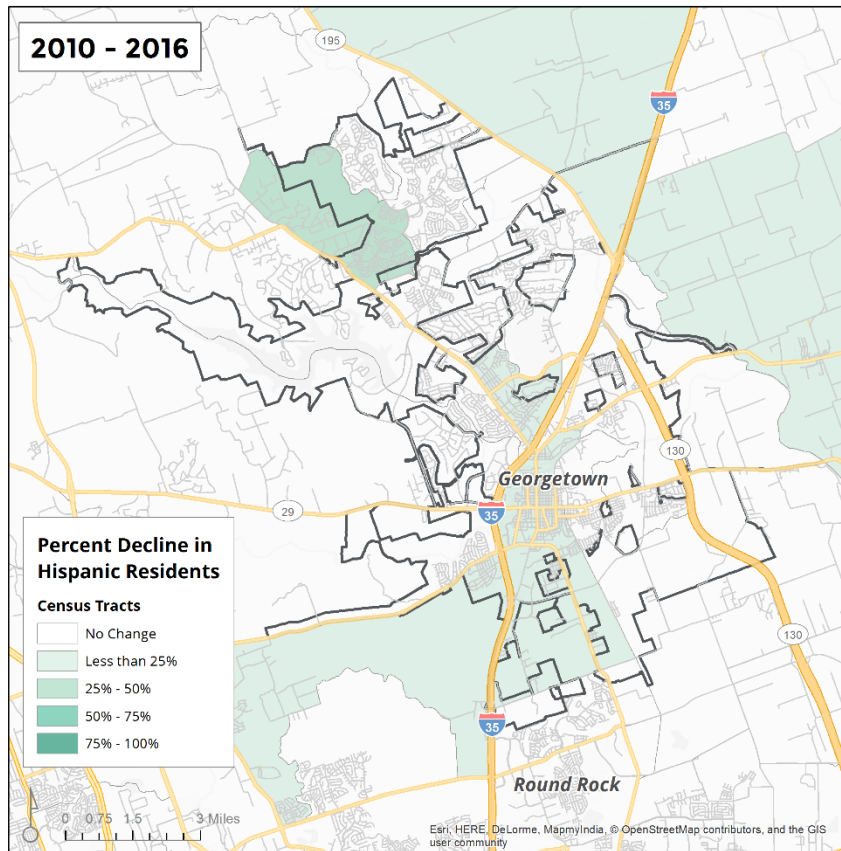
Source: American Community Survey, 2012-2016.

**Figure 2.**  
**GEORGETOWN - Percent Increase in African American Residents by Census Tract, 2010 to 2016**



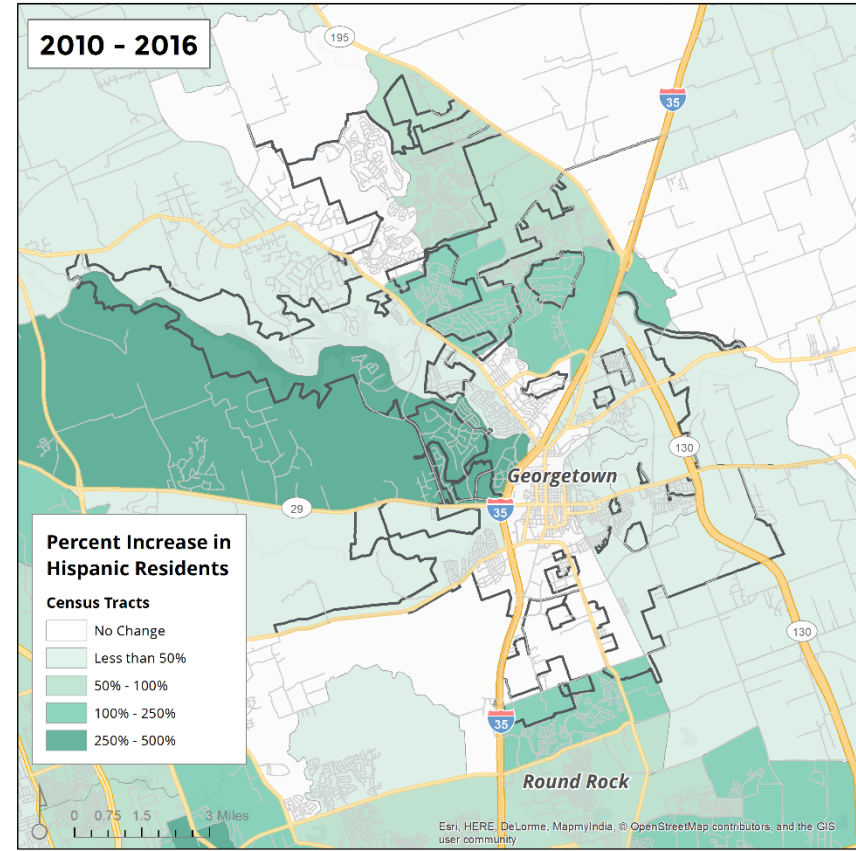
Source: American Community Survey, 2012-2016.

**Figure 3.**  
**GEORGETOWN – Percent Decline in Hispanic Residents**  
**by Census Tract, 2010 to 2016**



Source: American Community Survey, 2012-2016.

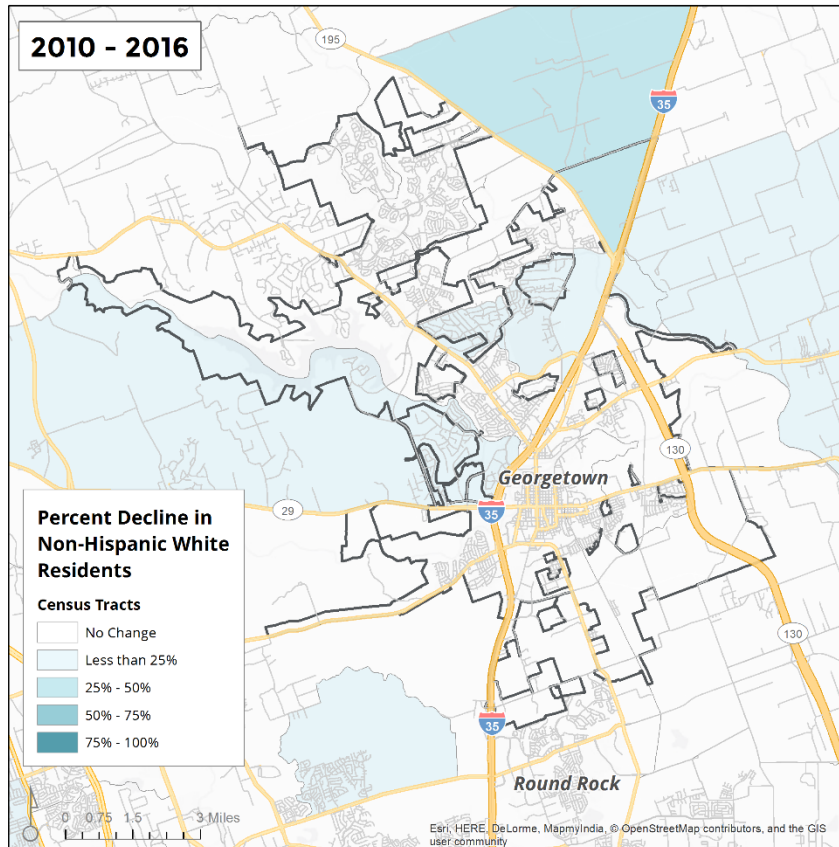
**Figure 4.**  
**GEORGETOWN – Percent Increase in Hispanic Residents**  
**by Census Tract, 2010 to 2016**



Source: American Community Survey, 2012-2016.

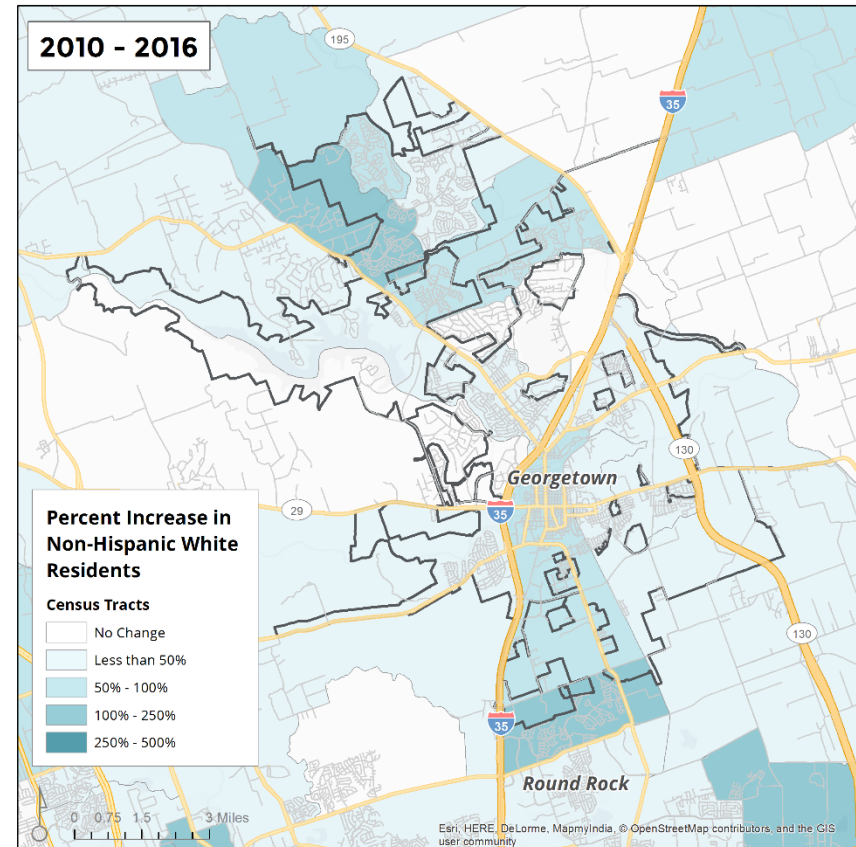


**Figure 5.**  
**GEORGETOWN – Percent Decline in Non-Hispanic White**  
**Residents by Census Tract, 2010 to 2016**



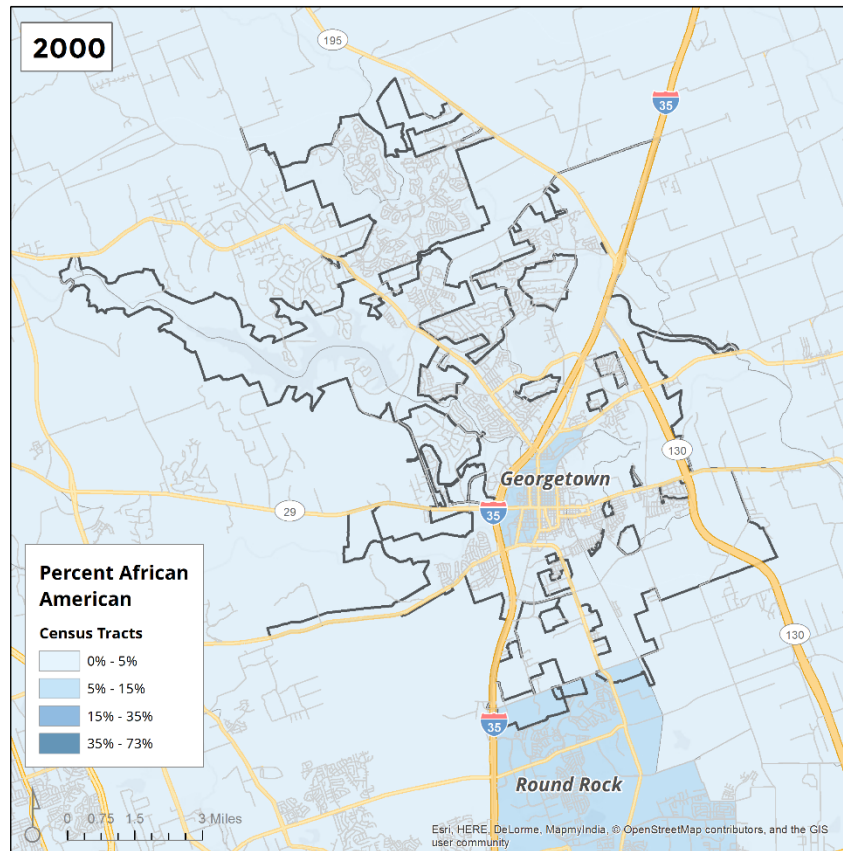
Source: American Community Survey, 2012-2016.

**Figure 6.**  
**GEORGETOWN – Percent Increase in Non-Hispanic**  
**Residents by Census Tract, 2010 to 2016**



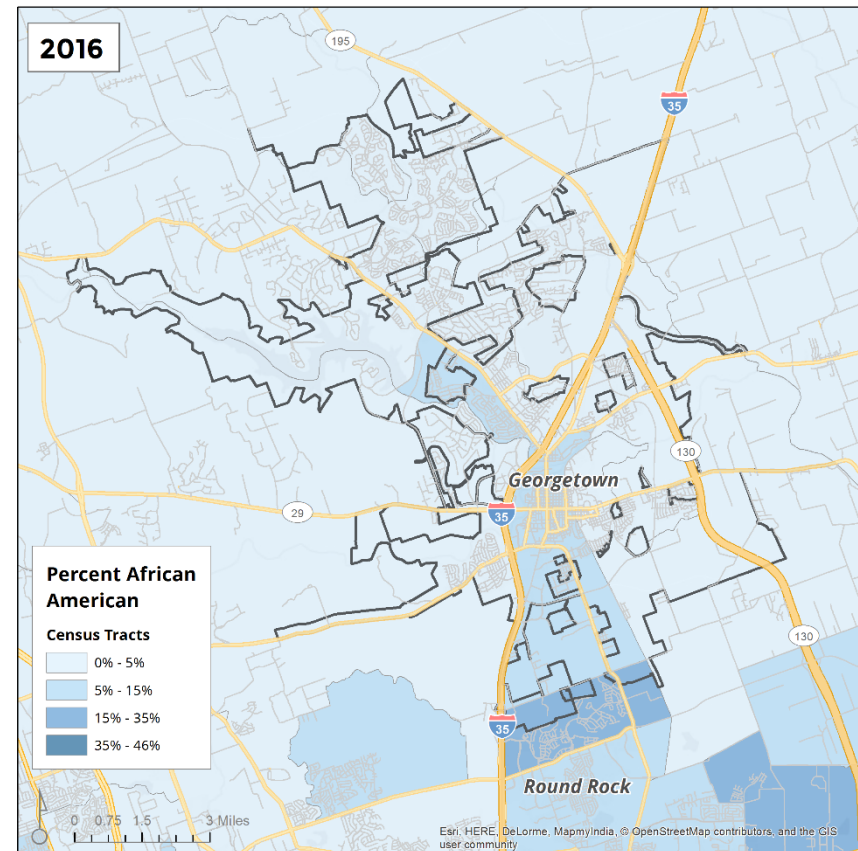
Source: American Community Survey, 2012-2016.

**Figure 7.**  
**GEORGETOWN – Percent African American by Census**  
**Tract, 2000**



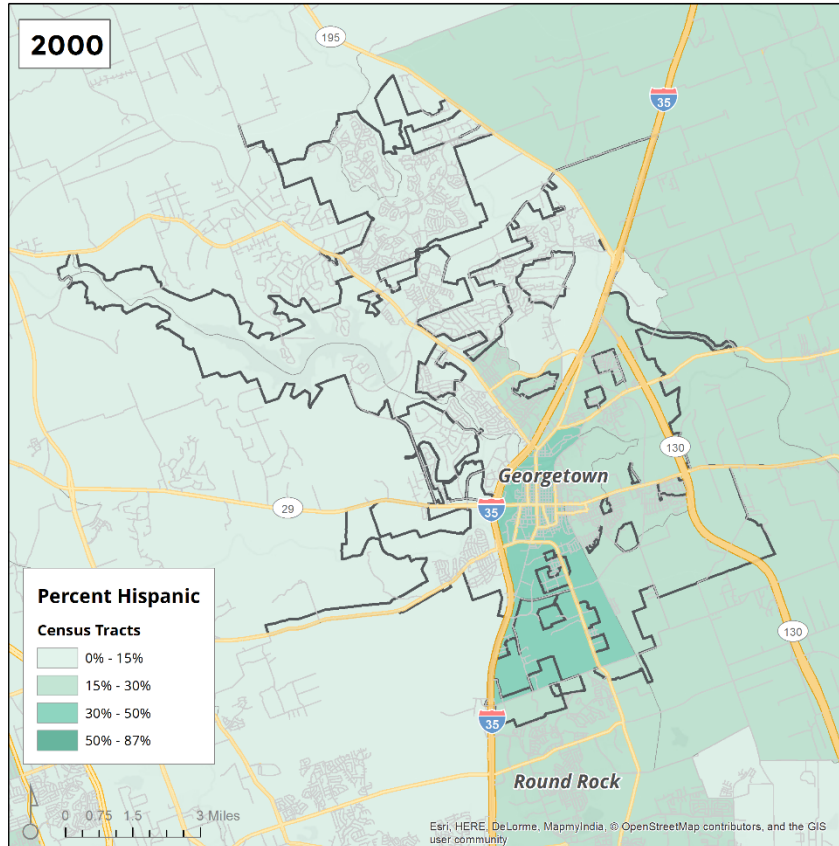
Source: 2000 US Census.

**Figure 8.**  
**GEORGETOWN – Percent African American by Census**  
**Tract, 2016**



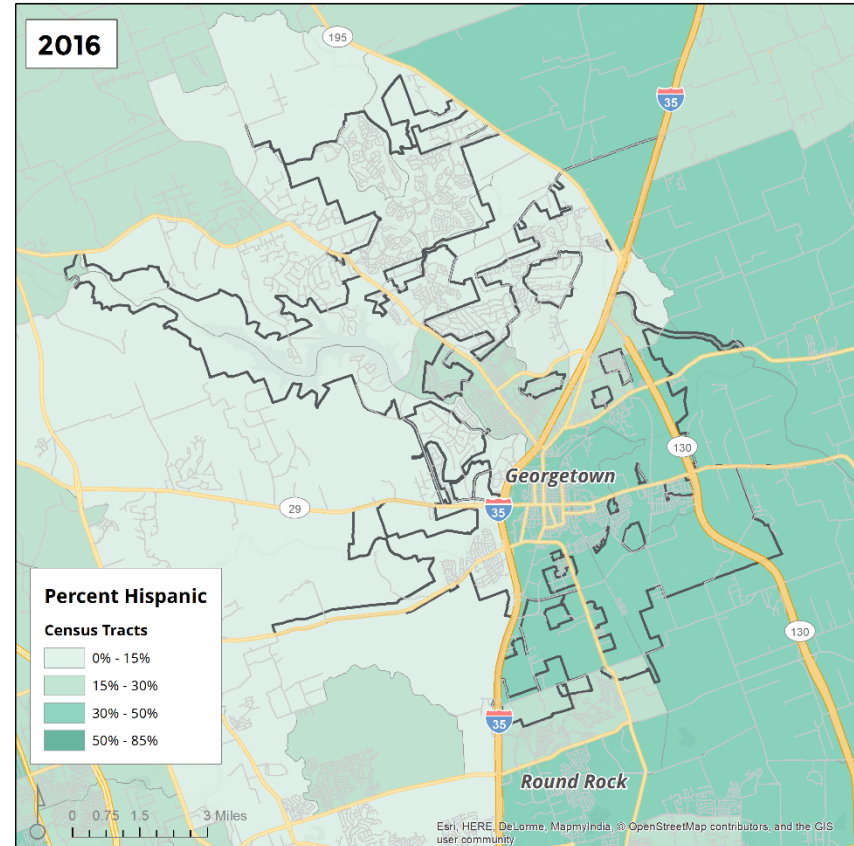
Source: American Community Survey, 2012-2016.

**Figure 9.**  
**GEORGETOWN – Percent Hispanic by Census Tract, 2000**



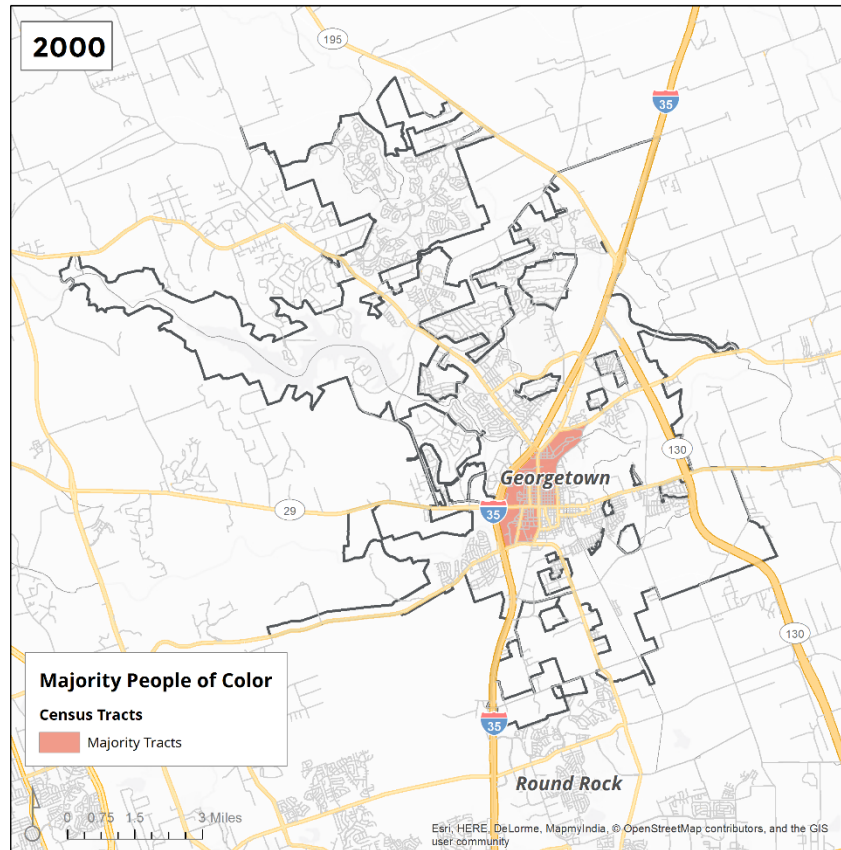
Source: 2000 US Census.

**Figure 10.**  
**GEORGETOWN – Percent Hispanic by Census Tract, 2016**



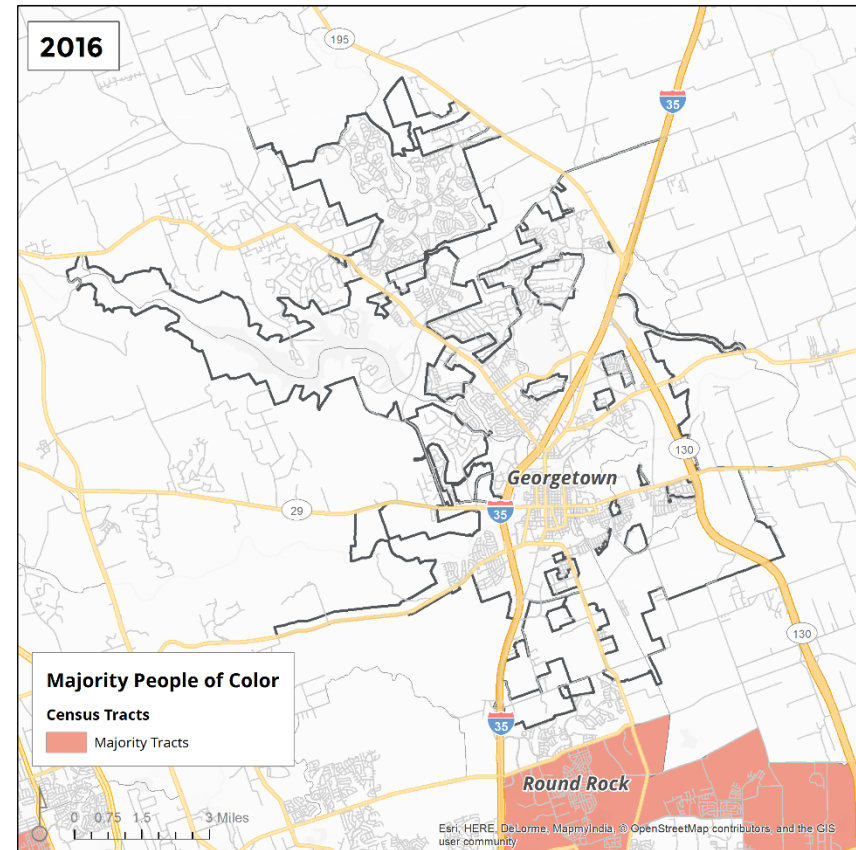
Source: American Community Survey, 2012-2016.

**Figure 11.**  
**GEORGETOWN – Majority People of Color by Census**  
**Tract, 2000**



Source: 2000 US Census.

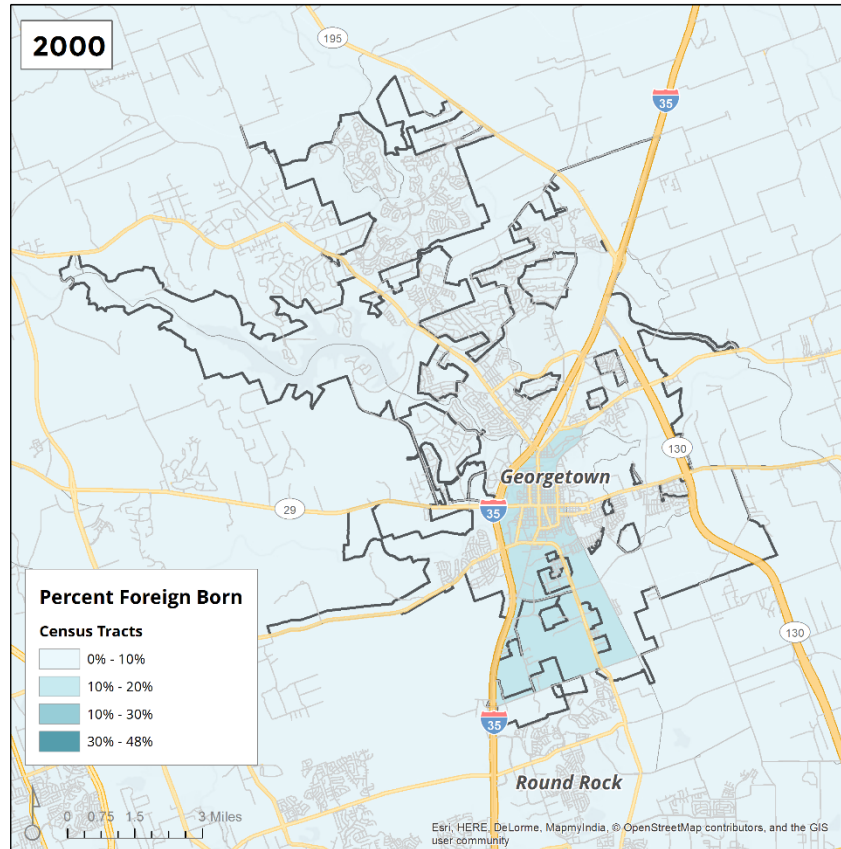
**Figure 12.**  
**GEORGETOWN – Majority People of Color by Census**  
**Tract, 2016**



Source: American Community Survey, 2012-2016.

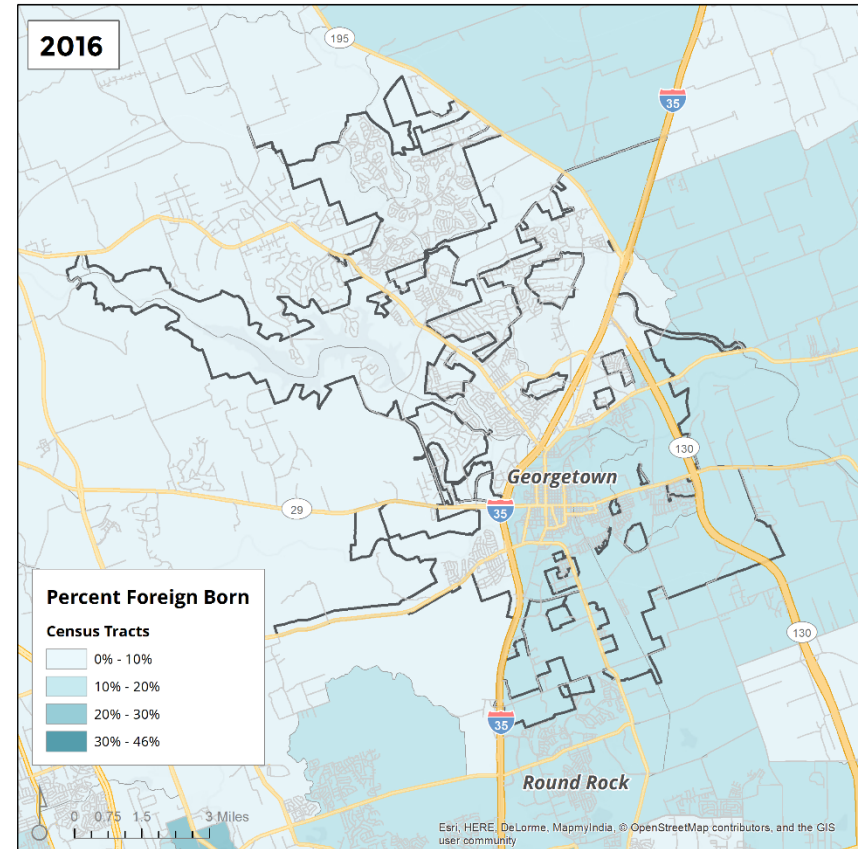


**Figure 13.**  
**GEORGETOWN – Percent Foreign Born by Census Tract,**  
**2000**



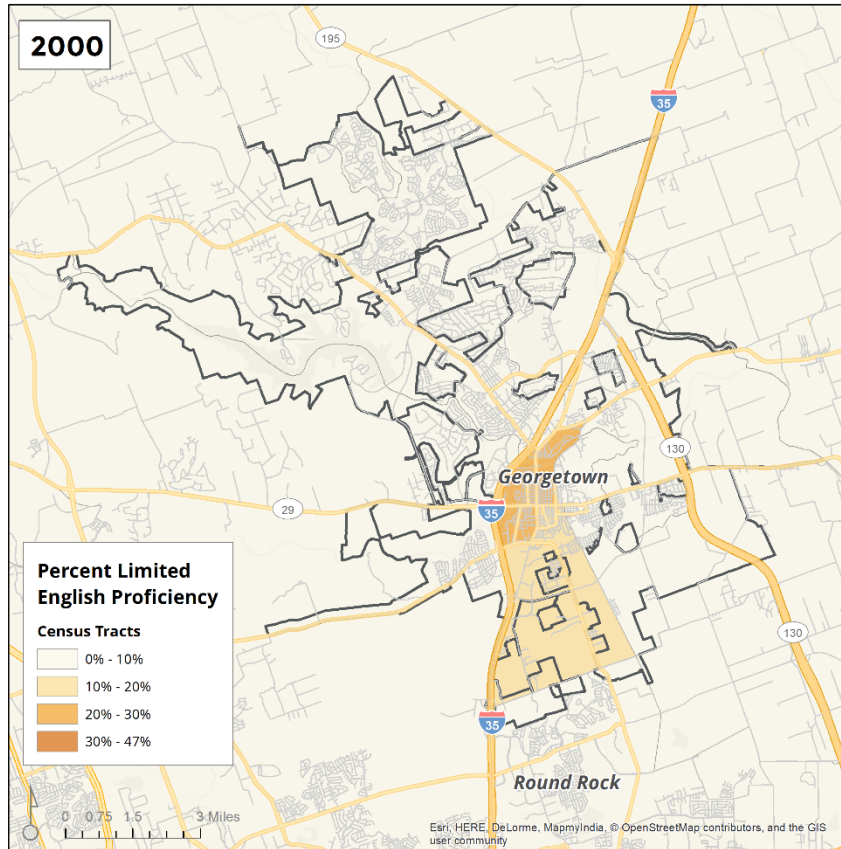
Source: 2000 US Census.

**Figure 14.**  
**GEORGETOWN – Percent Foreign Born by Census Tract,**  
**2016**



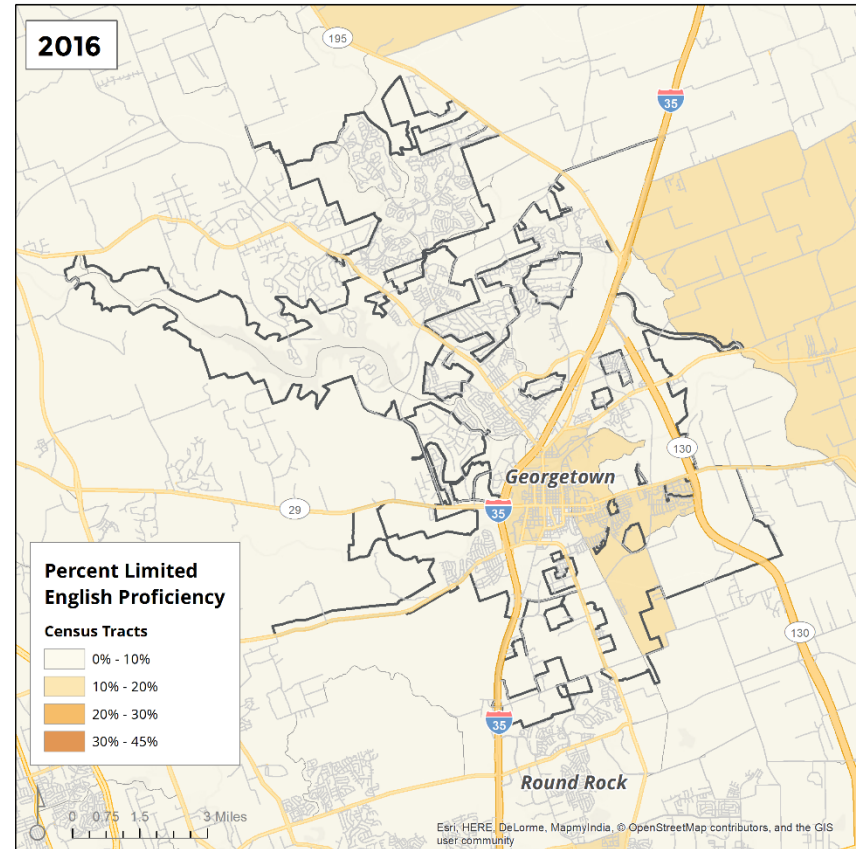
Source: American Community Survey, 2012-2016.

**Figure 15.**  
**GEORGETOWN – Percent Limited English Proficiency by**  
**Census Tract, 2000**



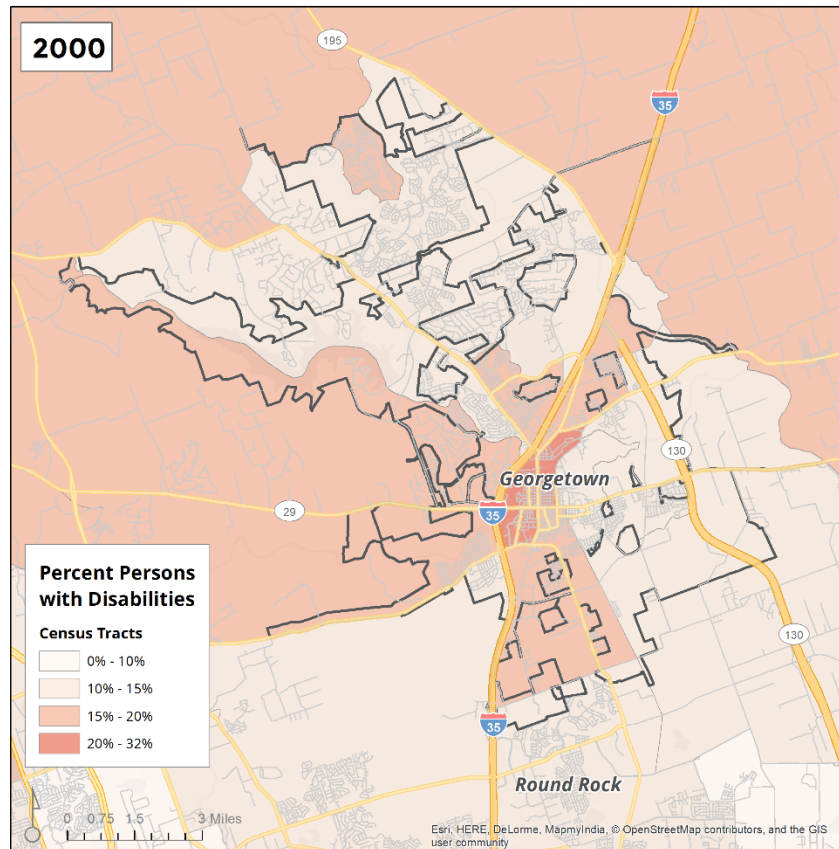
Source: 2000 US Census.

**Figure 16.**  
**GEORGETOWN – Percent Limited English Proficiency by**  
**Census Tract, 2016**



Source: American Community Survey, 2012-2016.

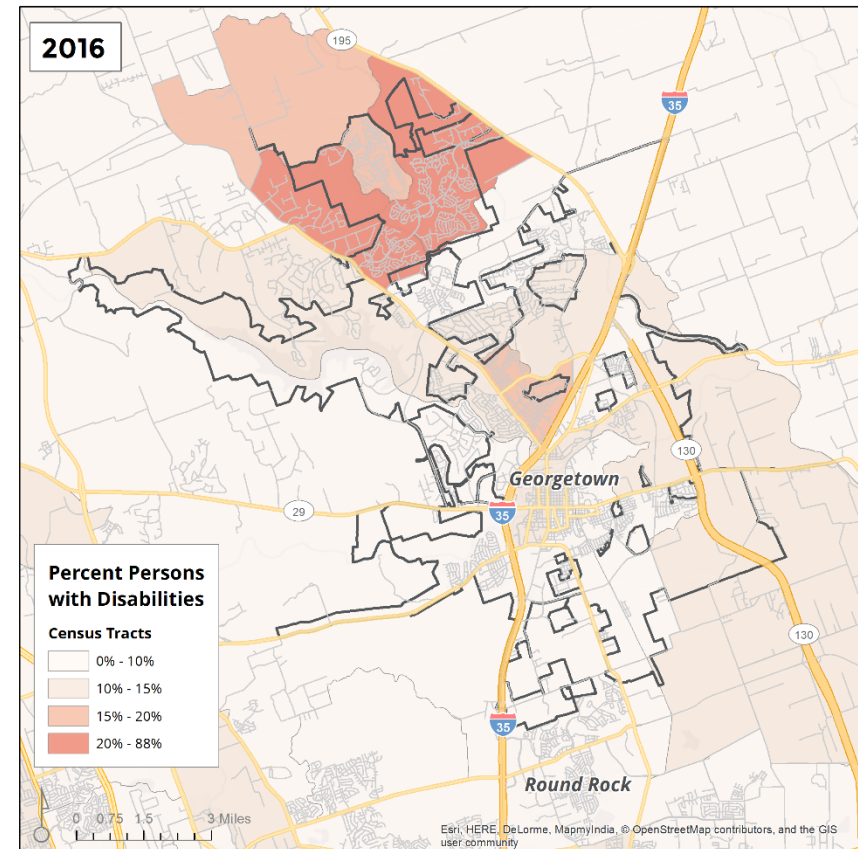
**Figure 17.**  
**GEORGETOWN – Percent Persons with Disabilities by**  
**Census Tract, 2000**



Note: Includes employment disability, which is not captured in the 2016 map.

Source: 2000 US Census.

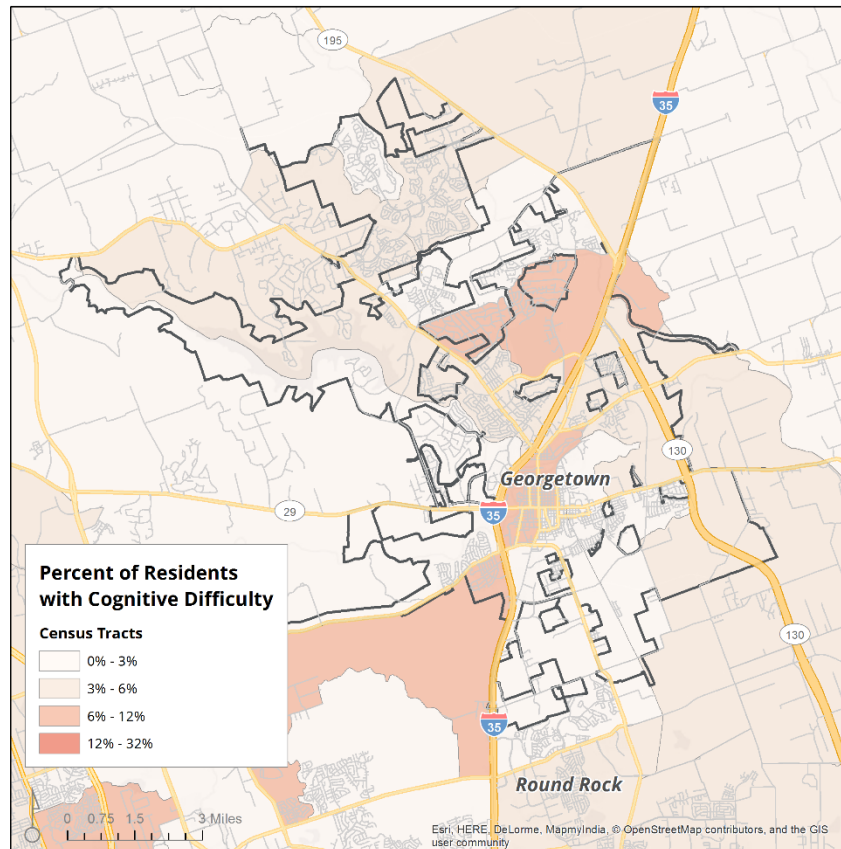
**Figure 18.**  
**GEORGETOWN – Percent Persons with Disabilities by**  
**Census Tract, 2016**



Source: American Community Survey, 2012-2016.



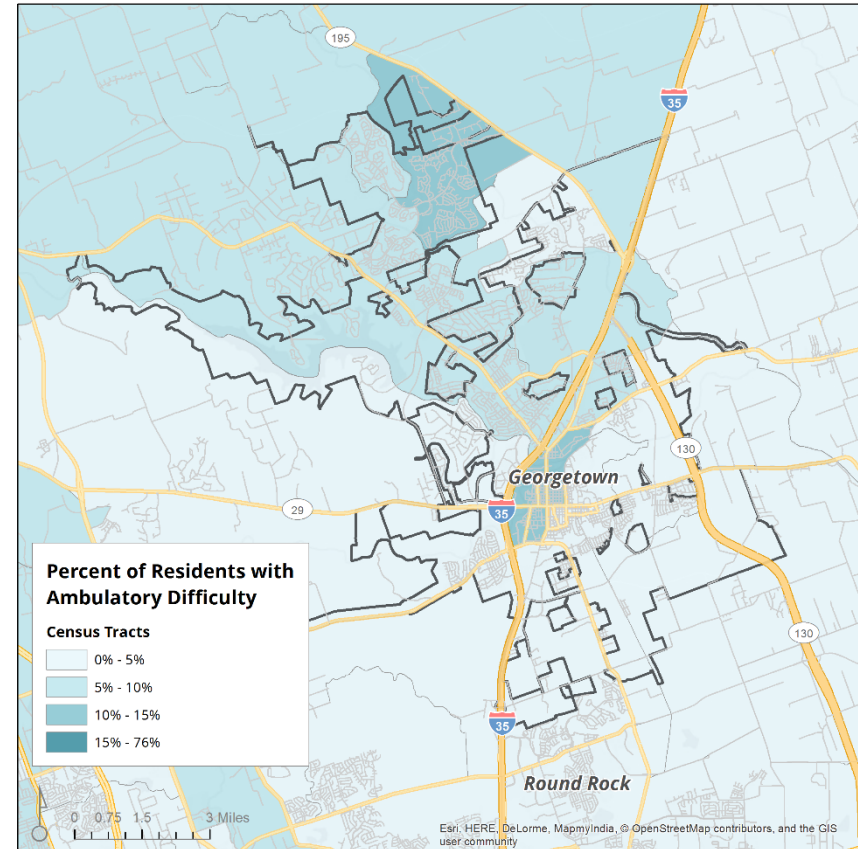
**Figure 19.**  
**GEORGETOWN – Percent of Residents with Cognitive**  
**Difficulty, by Census Tract**



Note: The ACS defines cognitive difficulty as having serious difficulty concentrating, remembering, or making decisions due to a physical, mental or emotional condition.

Source: Root Policy Research from the 2013-2017 ACS.

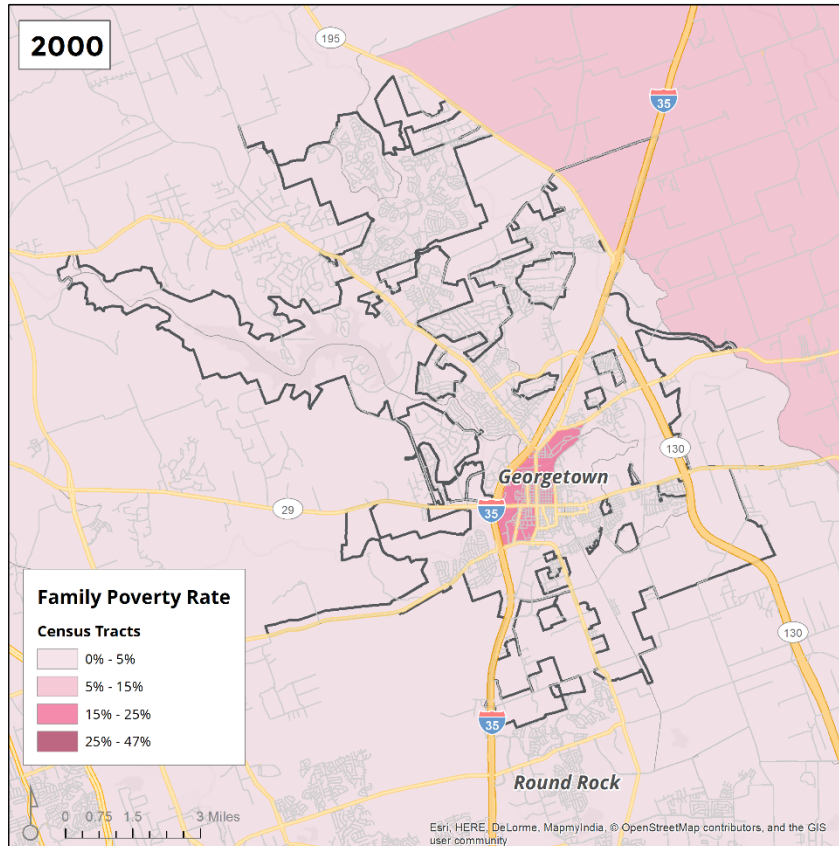
**Figure 20.**  
**GEORGETOWN – Percent of Residents with Ambulatory**  
**Difficulty, by Census Tract**



Note: The ACS defines ambulatory difficulty as having serious difficulty walking or climbing stairs.

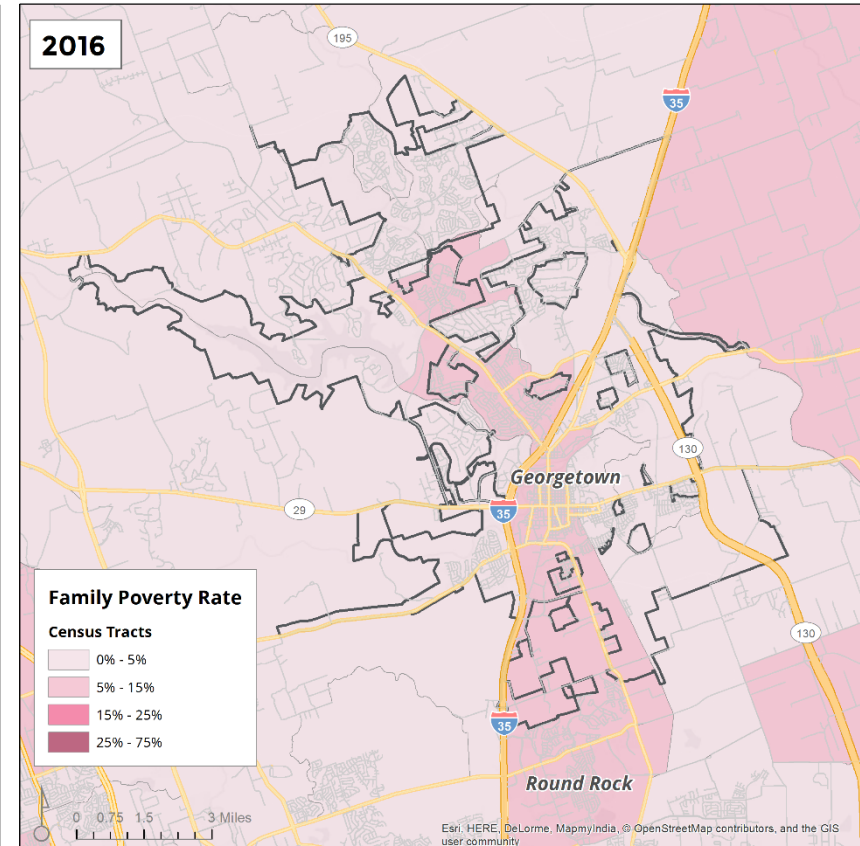
Source: Root Policy Research from the 2013-2017 ACS.

**Figure 21.**  
**GEORGETOWN – Percent Poverty by Census Tract, 2000**



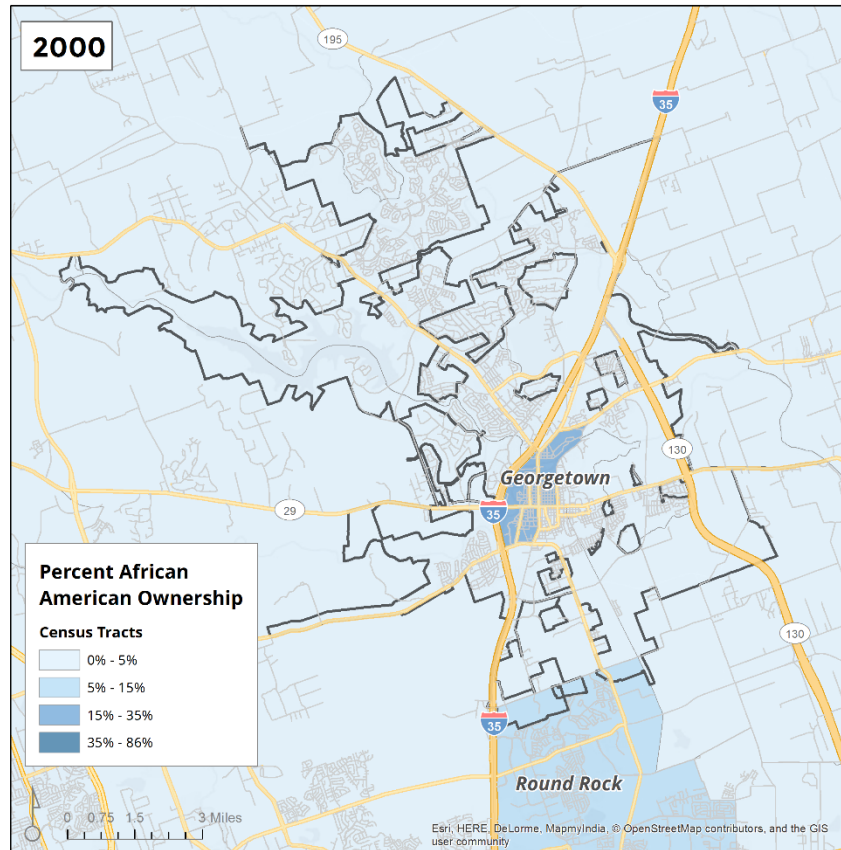
Source: 2000 US Census.

**Figure 22.**  
**GEORGETOWN – Percent Poverty by Census Tract, 2016**



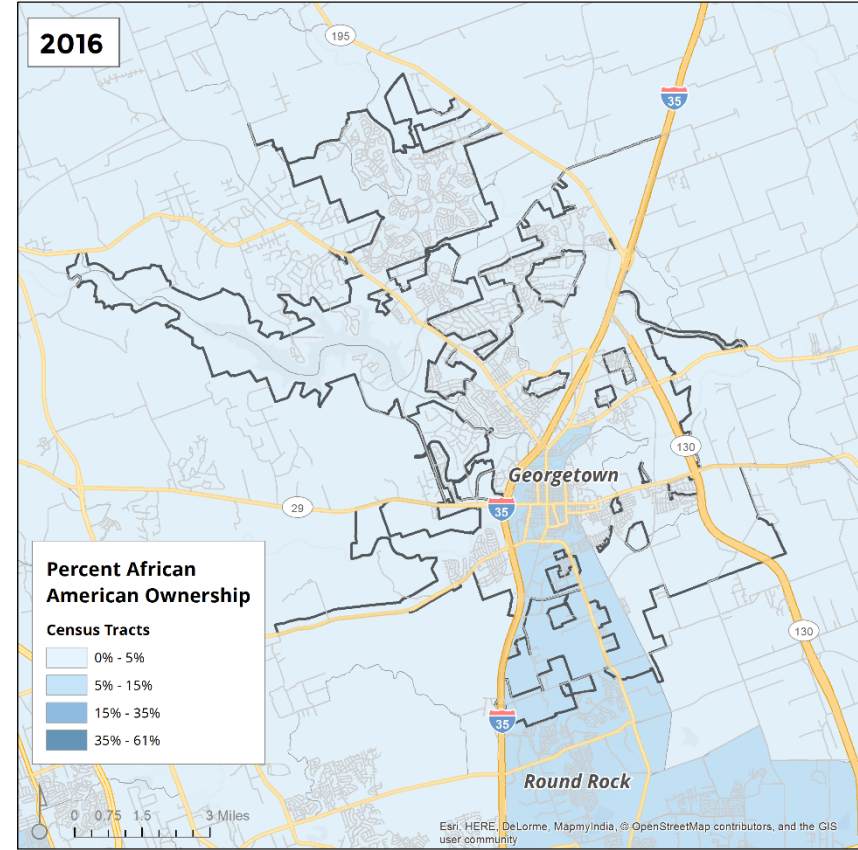
Source: American Community Survey, 2012-2016.

**Figure 23.**  
**GEORGETOWN – Percent African American Ownership,**  
**2000**



Source: 2000 US Census.

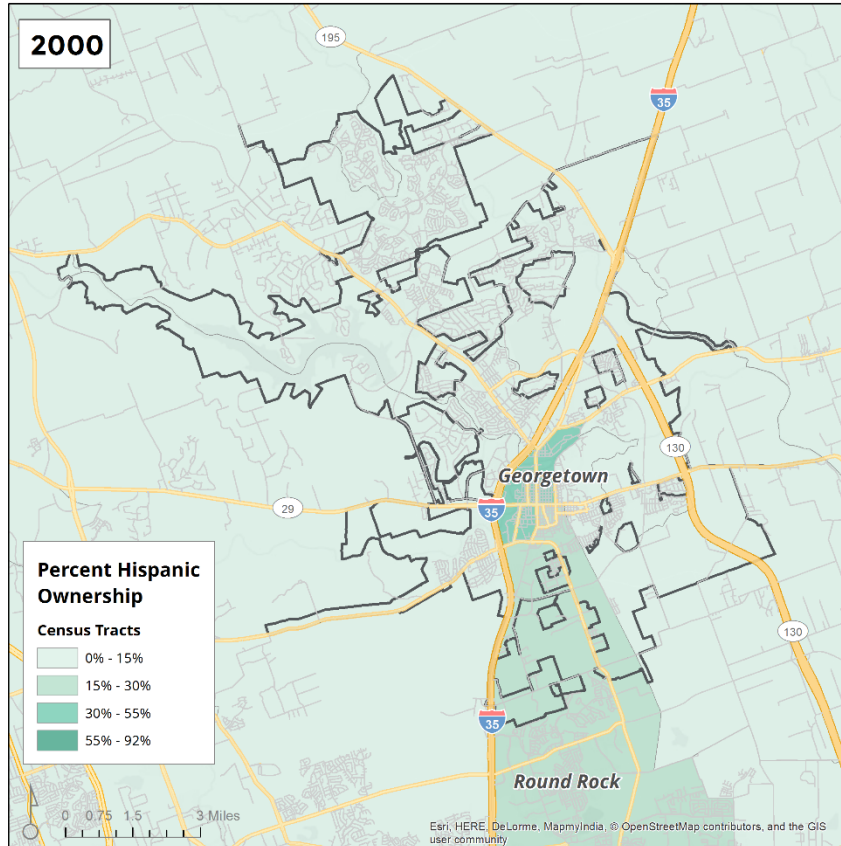
**Figure 24.**  
**GEORGETOWN – Percent African American Ownership,**  
**2016**



Source: American Community Survey, 2012-2016.

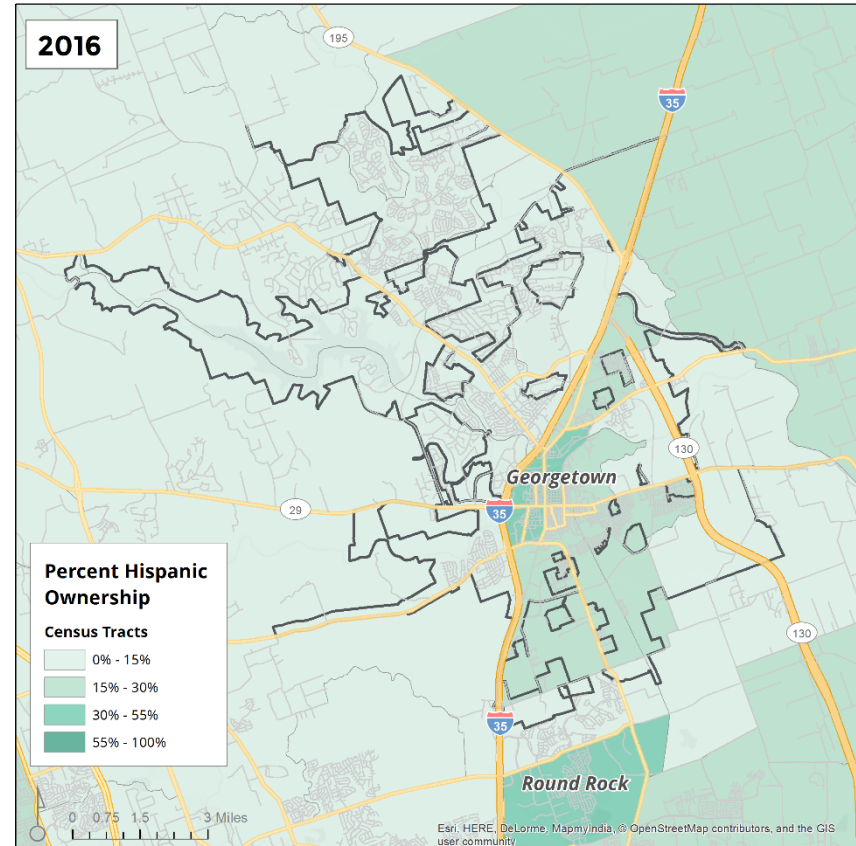


**Figure 25.**  
**GEORGETOWN – Percent Hispanic Ownership, 2000**



Source: 2000 US Census.

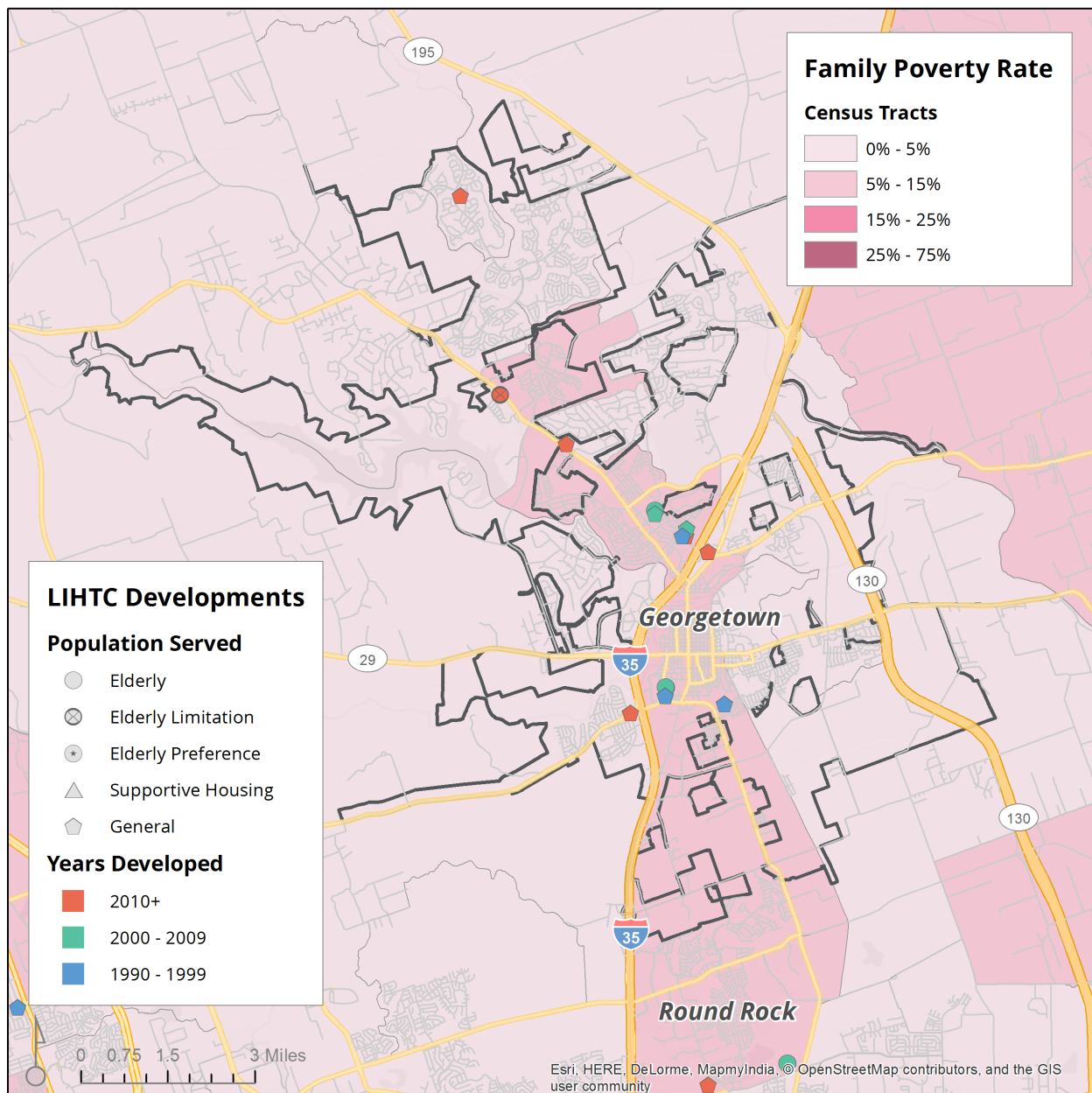
**Figure 26.**  
**GEORGETOWN – Percent Hispanic Ownership, 2016**



Source: American Community Survey, 2012-2016

**Figure 27.**

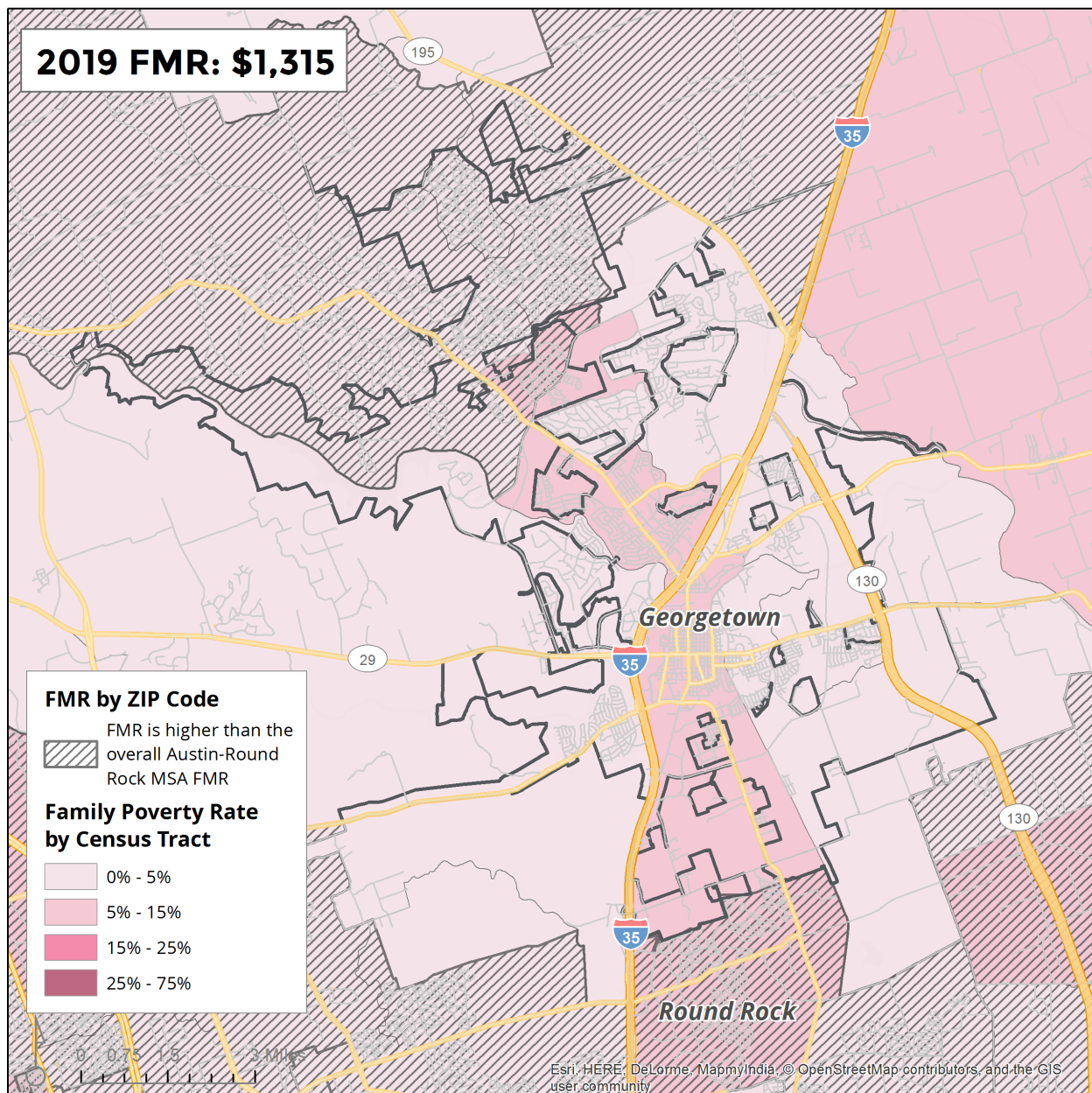
**GEORGETOWN – Low-Income Housing Tax Credit (LIHTC) Developments and Poverty Rate by Census Tract, 2016 (Poverty) and 2018 (LIHTC)**



Source: TDHCA, ACS 2012-2016.

**Figure 28.**

**GEORGETOWN – Small Area Fair Market Rents (FMR) and Poverty Rates by Census Tract, 2016 (Poverty) and 2019 (FMR)**



Note: The 2019 2-bedroom FMR for the Austin-Round Rock area is \$1,315. The crosshatch indicates a ZIP code where the zip code FMR is higher than metro wide FMR.

Source: [www.huduser.org](http://www.huduser.org); Fair Market Rent database.