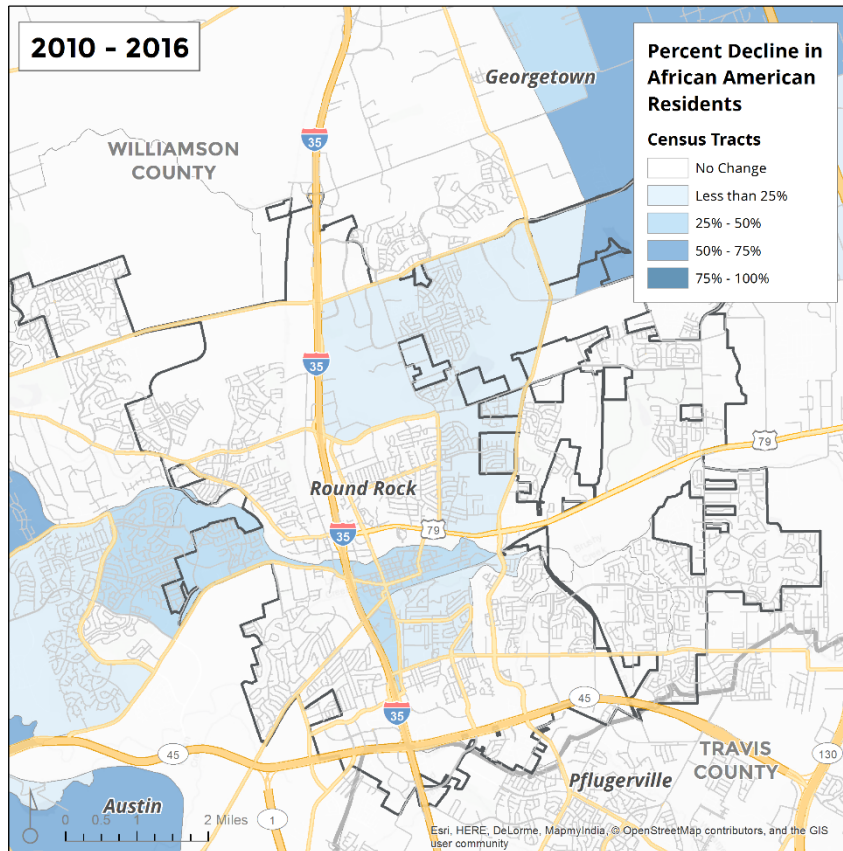


APPENDIX A.

JURISDICTION LEVEL MAPS

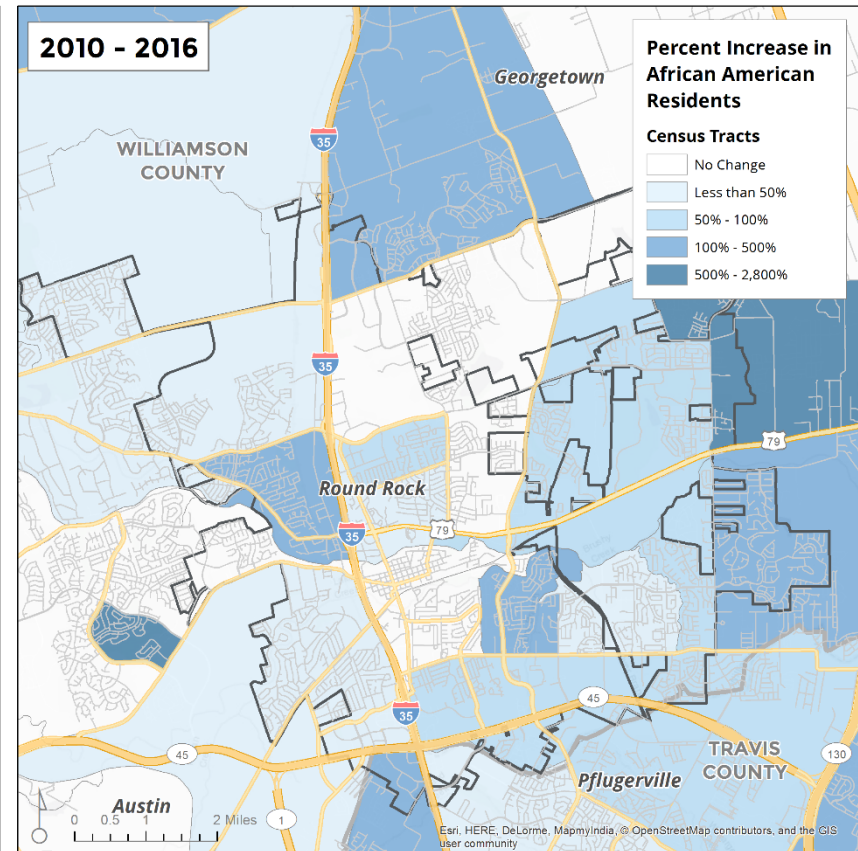
ROUND ROCK

Figure 1.
ROUND ROCK – Percent Decline in African American Residents by Census Tract, 2010 to 2016



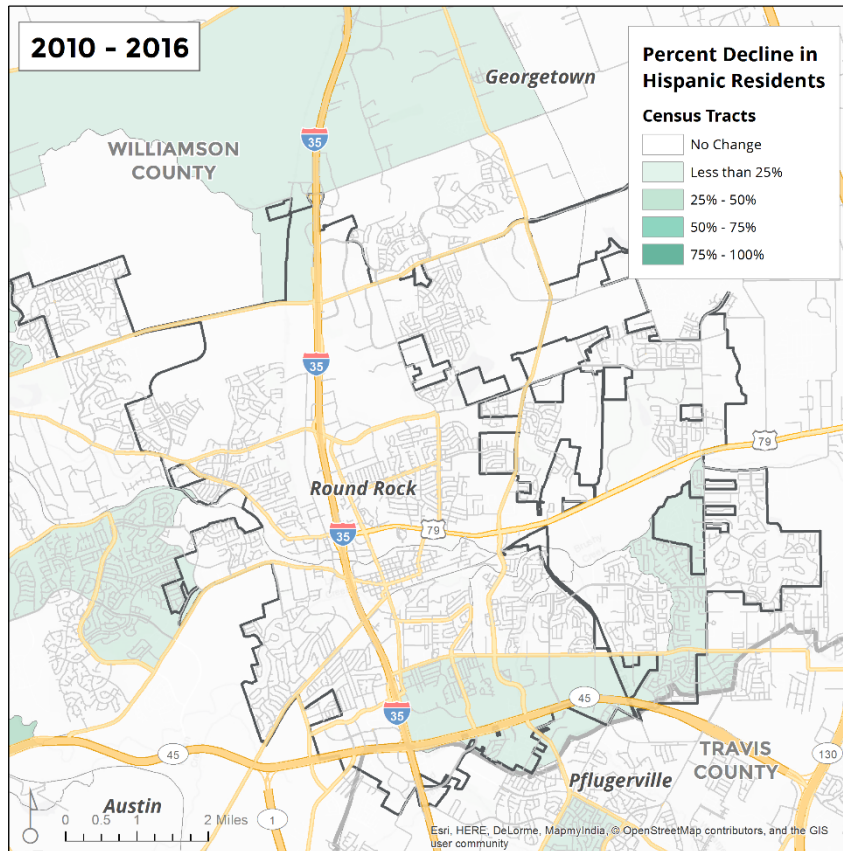
Source: American Community Survey, 2012-2016.

Figure 2.
ROUND ROCK - Percent Increase in African American Residents by Census Tract, 2010 to 2016



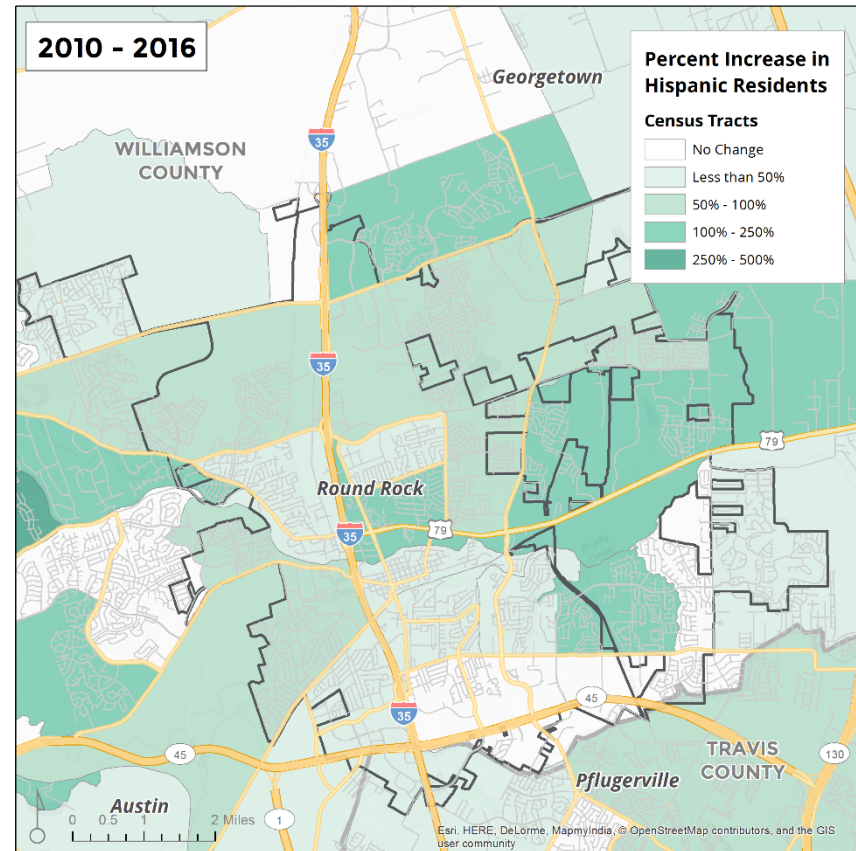
Source: American Community Survey, 2012-2016.

Figure 3.
ROUND ROCK – Percent Decline in Hispanic Residents
by Census Tract, 2010 to 2016



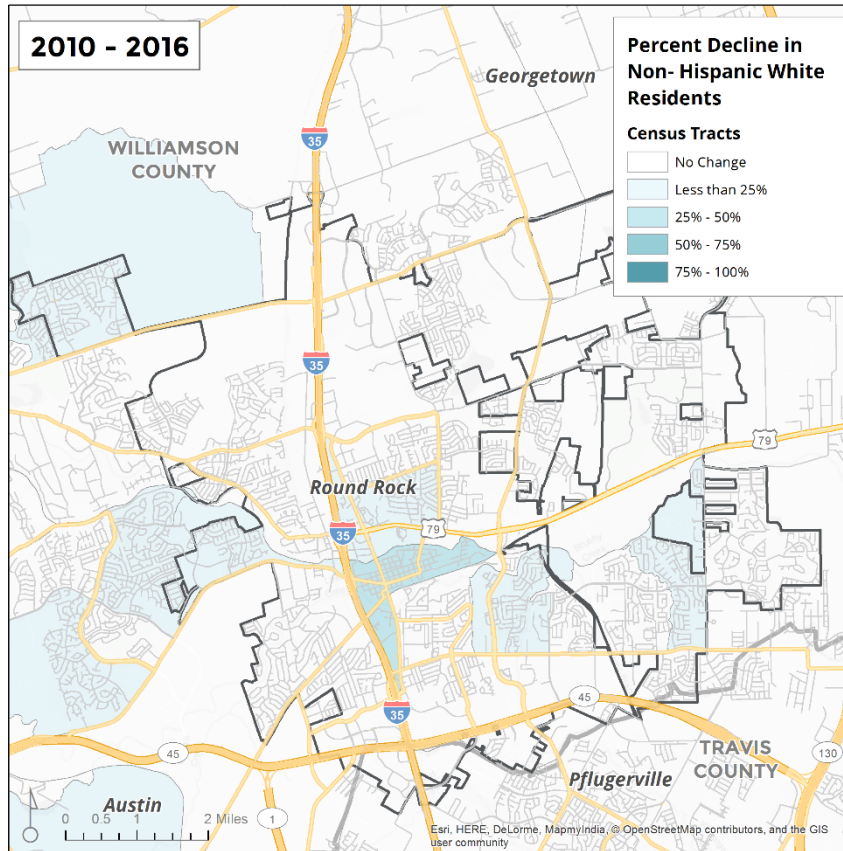
Source: American Community Survey, 2012-2016.

Figure 4.
ROUND ROCK – Percent Increase in Hispanic Residents
by Census Tract, 2010 to 2016



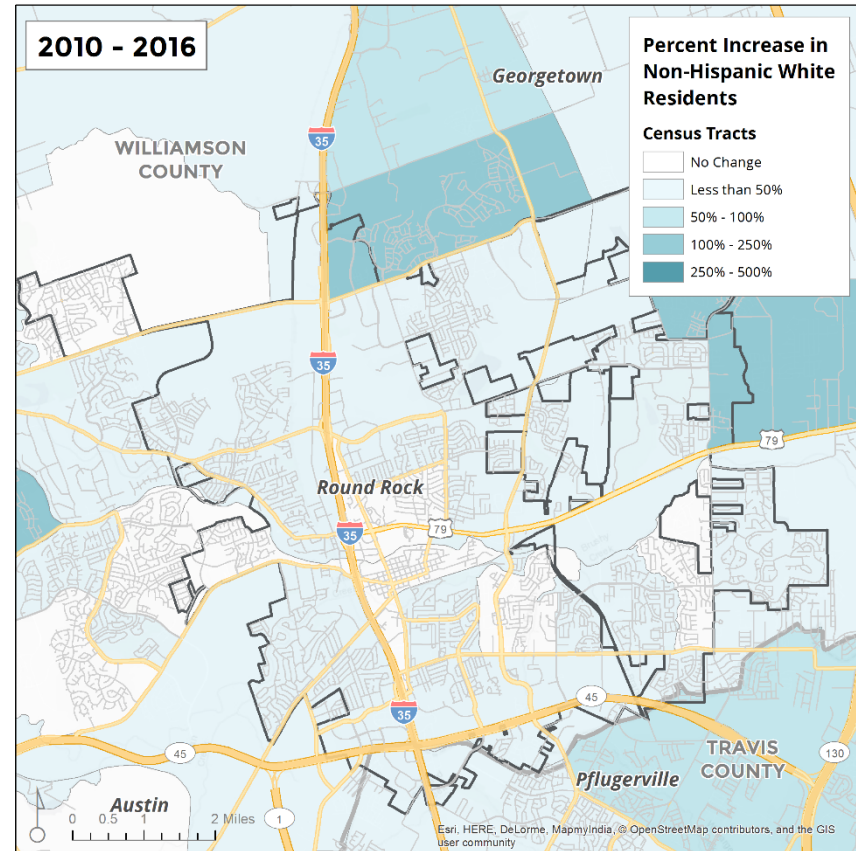
Source: American Community Survey, 2012-2016.

Figure 5.
ROUND ROCK – Percent Decline in Non-Hispanic White Residents by Census Tract, 2010 to 2016



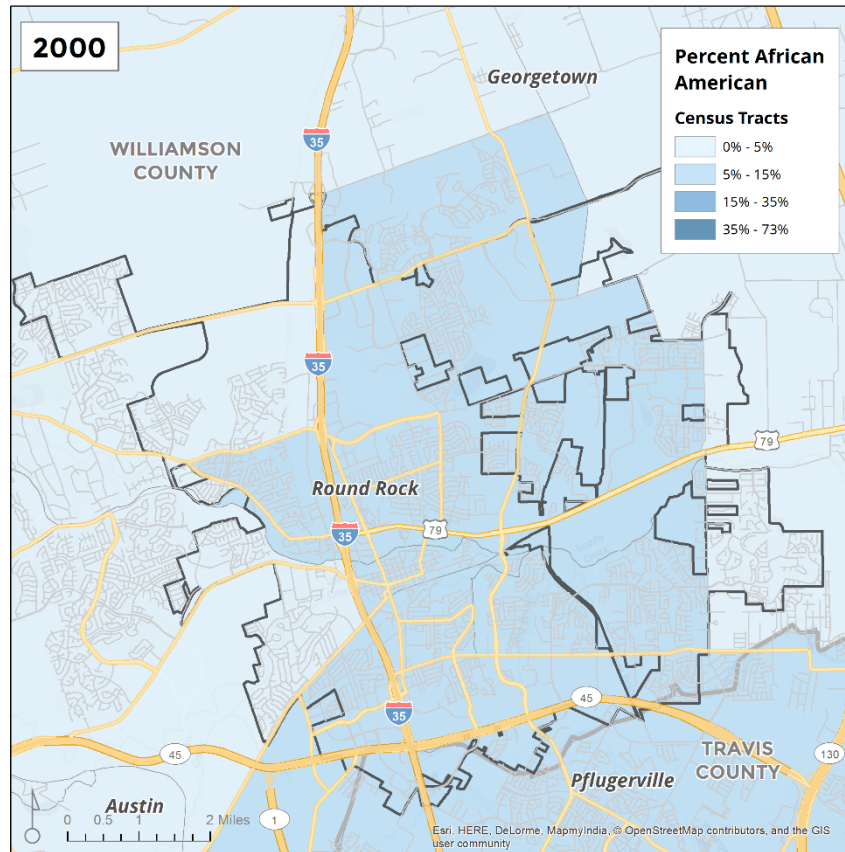
Source: American Community Survey, 2012-2016.

Figure 6.
ROUND ROCK – Percent Increase in Non-Hispanic White Residents by Census Tract, 2010 to 2016



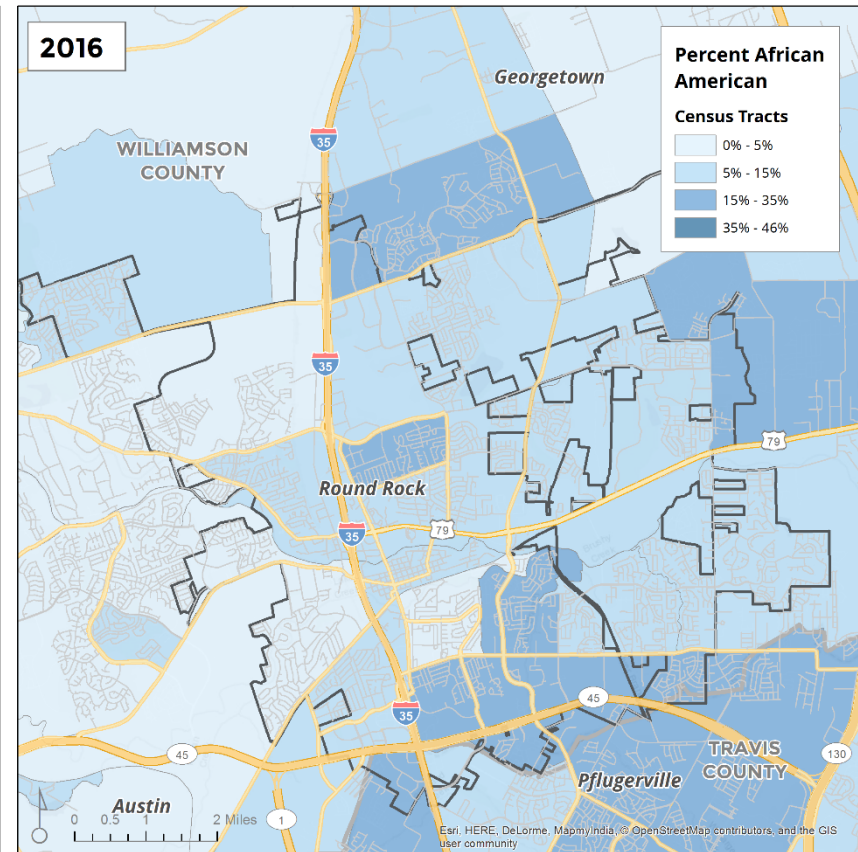
Source: American Community Survey, 2012-2016.

Figure 7.
ROUND ROCK – Percent African American by Census
Tract, 2000



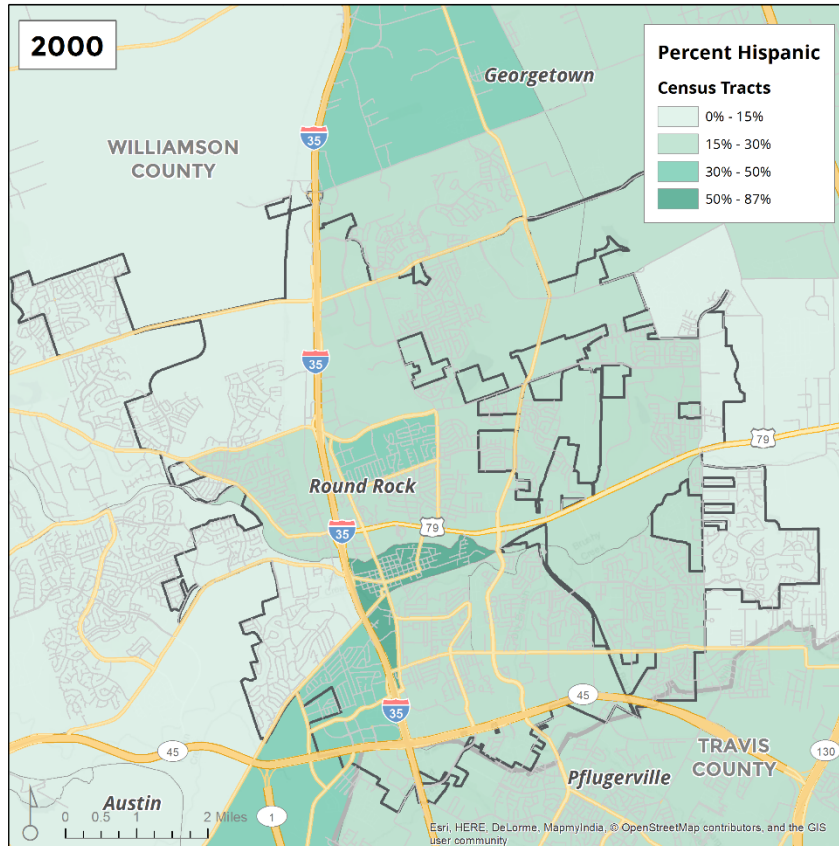
Source: 2000 US Census.

Figure 8.
ROUND ROCK – Percent African American by Census
Tract, 2016



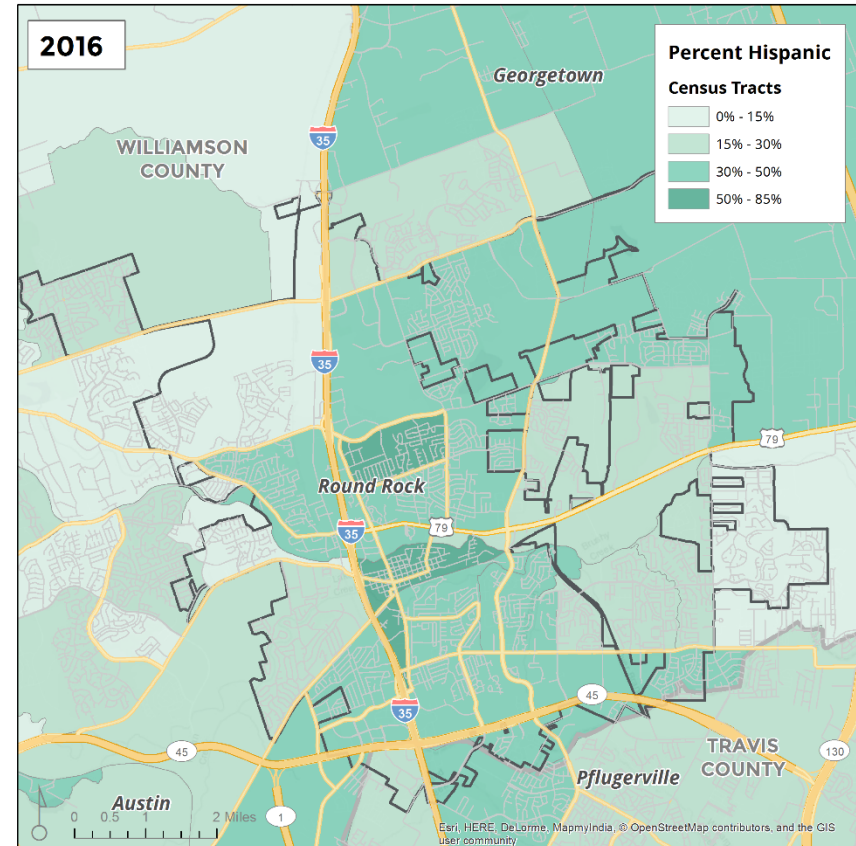
Source: American Community Survey, 2012-2016.

Figure 9.
ROUND ROCK – Percent Hispanic by Census Tract, 2000



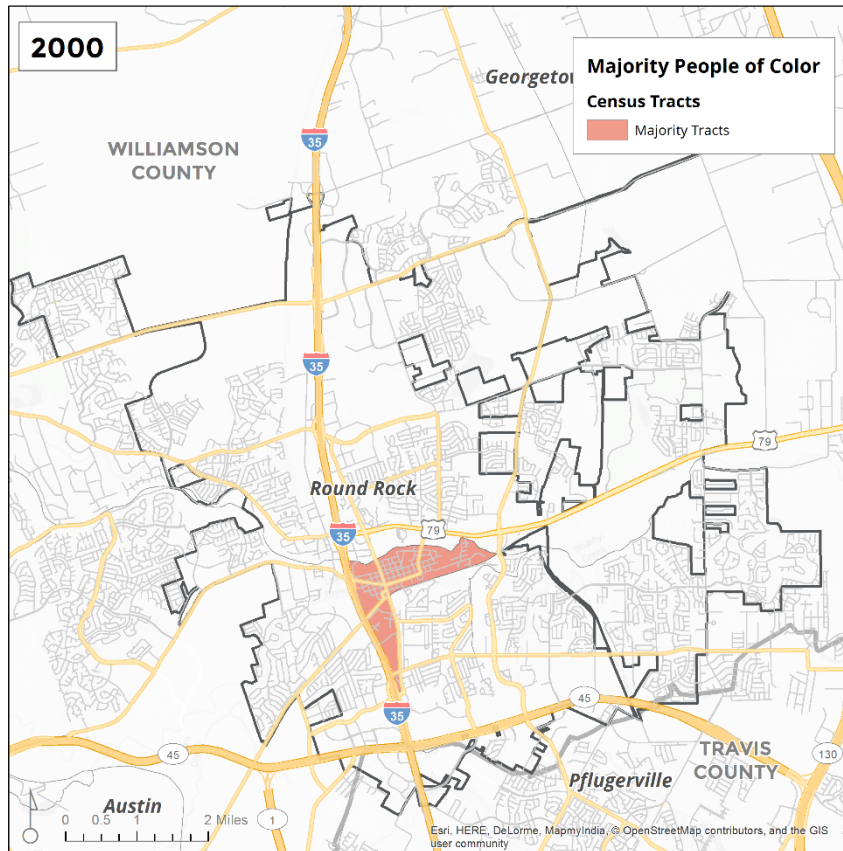
Source: 2000 US Census.

Figure 10.
ROUND ROCK – Percent Hispanic by Census Tract, 2016



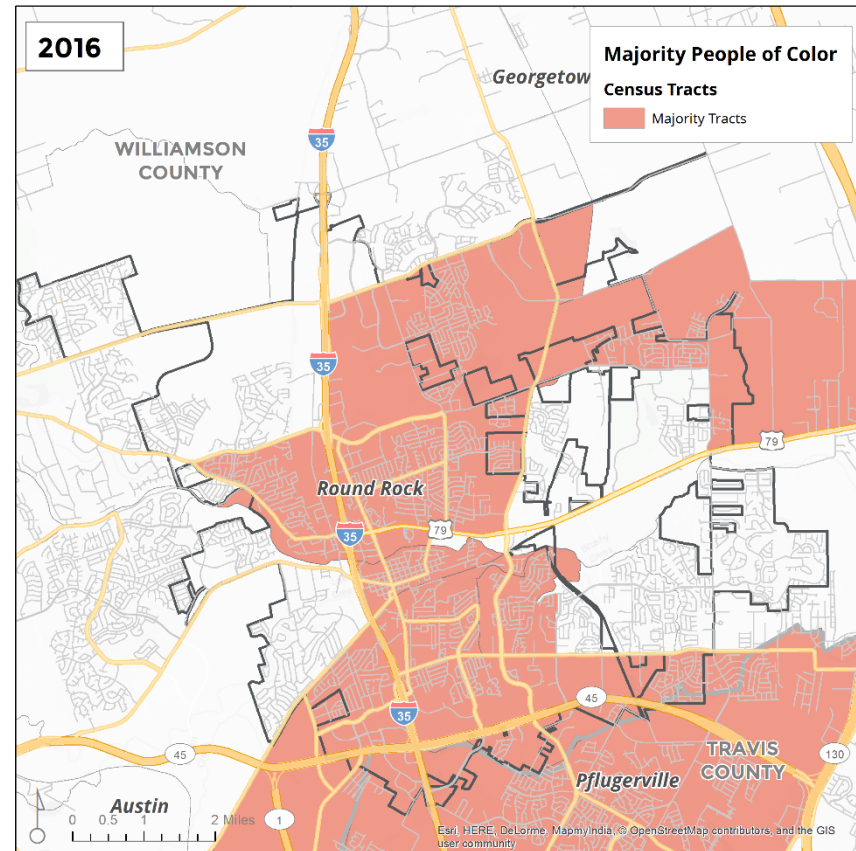
Source: American Community Survey, 2012-2016.

Figure 11.
ROUND ROCK – Majority People of Color by Census
Tract, 2000



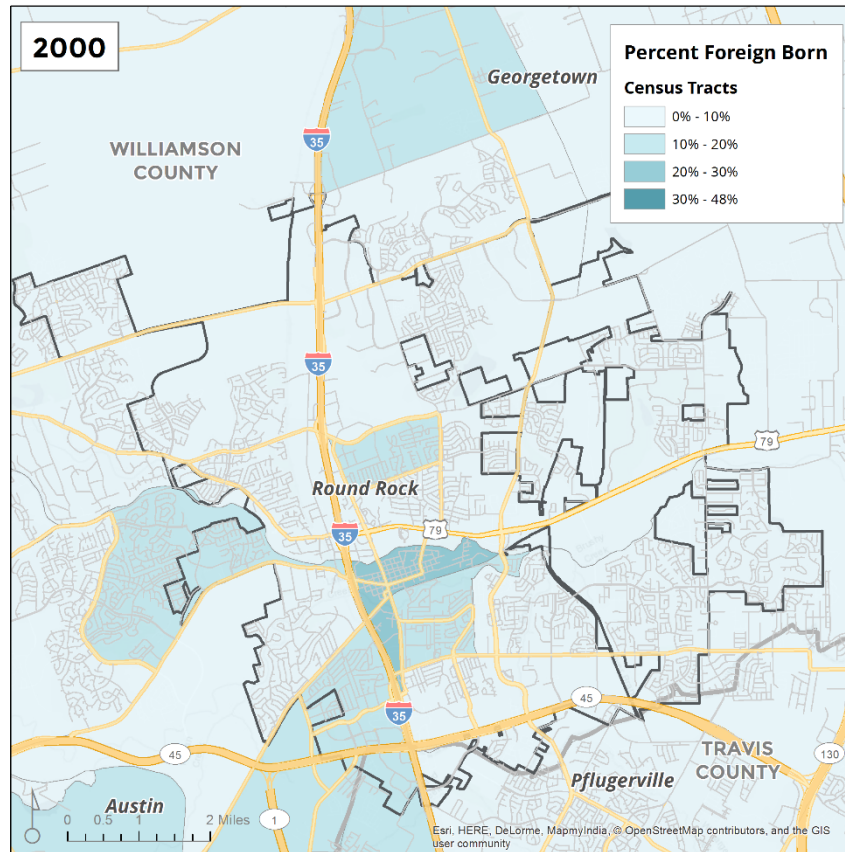
Source: 2000 US Census.

Figure 12.
ROUND ROCK – Majority People of Color by Census
Tract, 2016



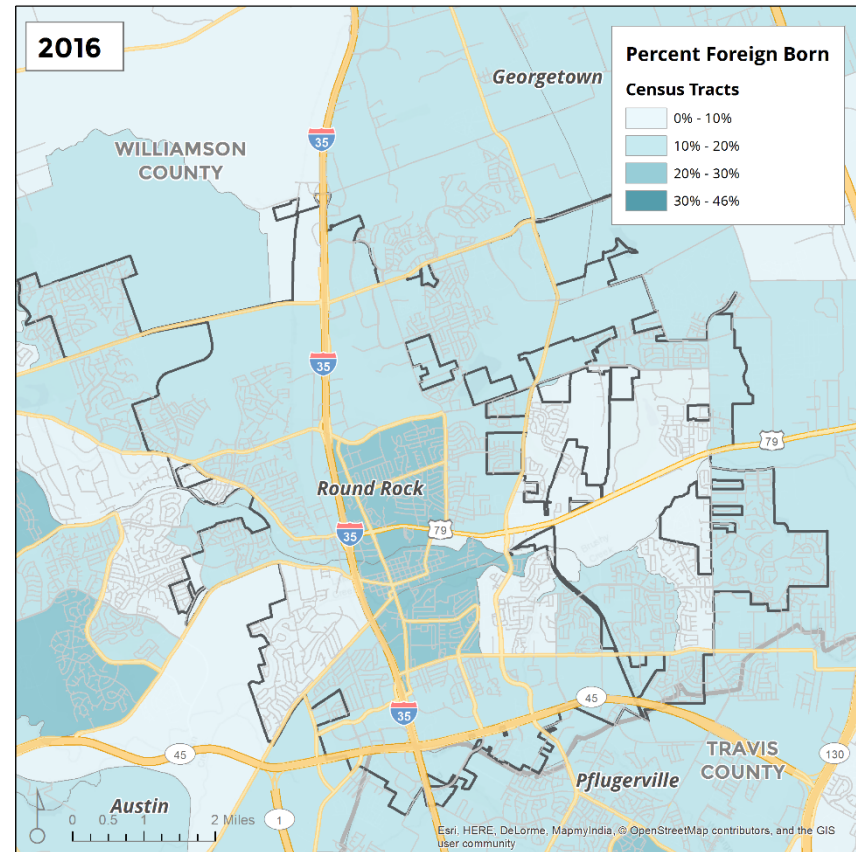
Source: American Community Survey, 2012-2016.

Figure 13.
ROUND ROCK – Percent Foreign Born by Census Tract,
2000



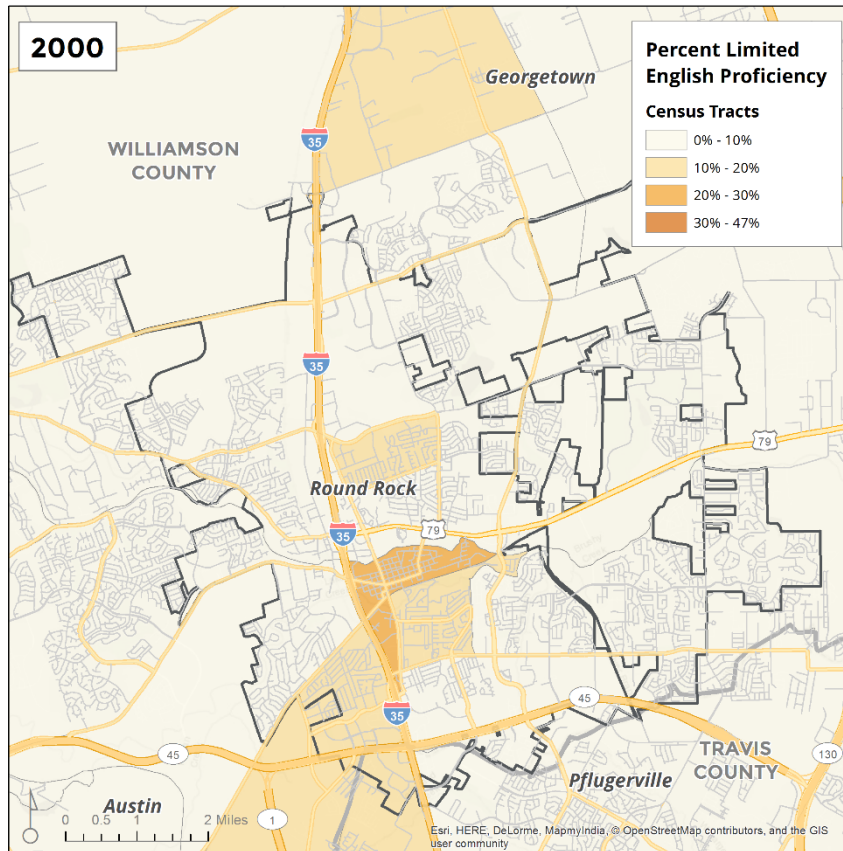
Source: 2000 US Census.

Figure 14.
ROUND ROCK – Percent Foreign Born by Census Tract,
2016



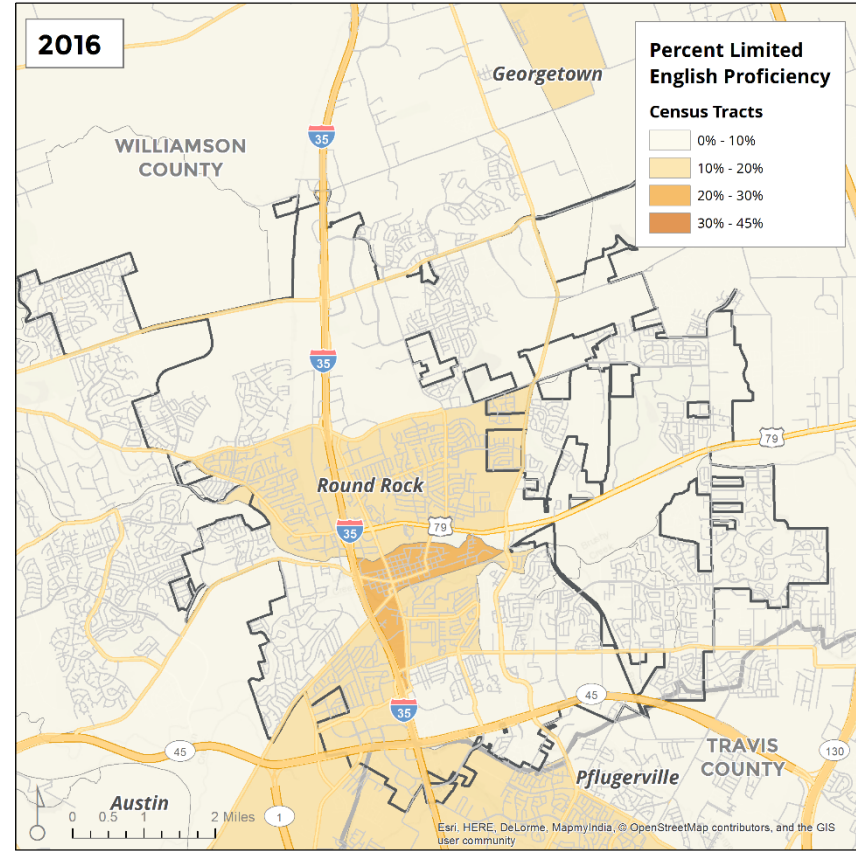
Source: American Community Survey, 2012-2016.

Figure 15.
ROUND ROCK – Percent Limited English Proficiency by
Census Tract, 2000



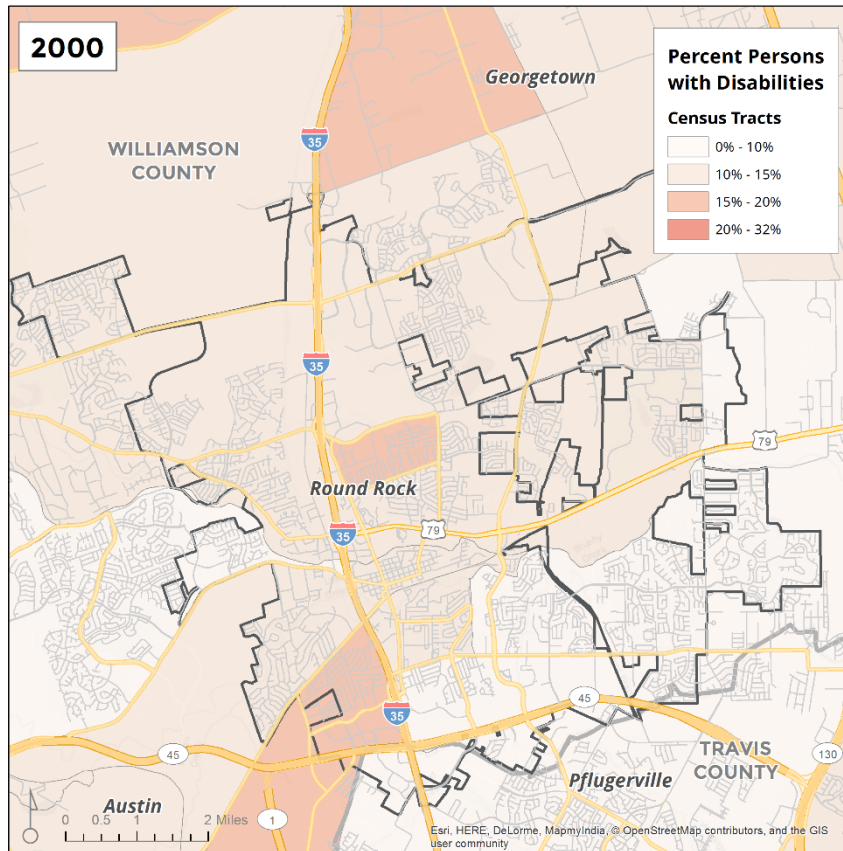
Source: 2000 US Census.

Figure 16.
ROUND ROCK – Percent Limited English Proficiency by
Census Tract, 2016



Source: American Community Survey, 2012-2016.

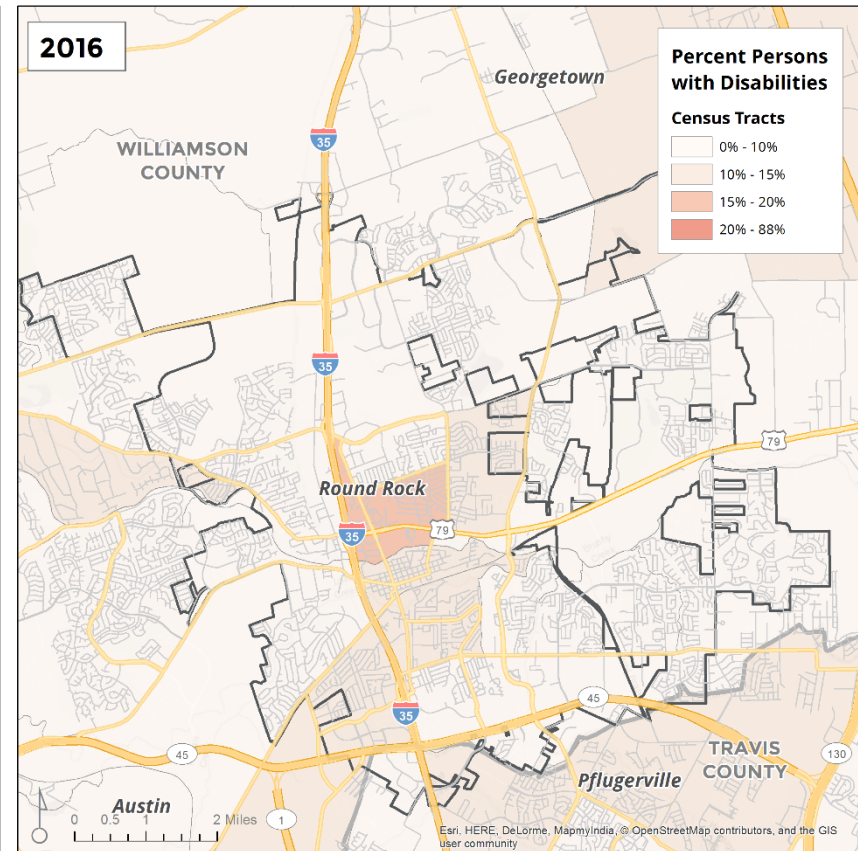
Figure 17.
ROUND ROCK – Percent Persons with Disabilities by
Census Tract, 2000



Note: Includes employment disability, which is not captured in the 2016 map.

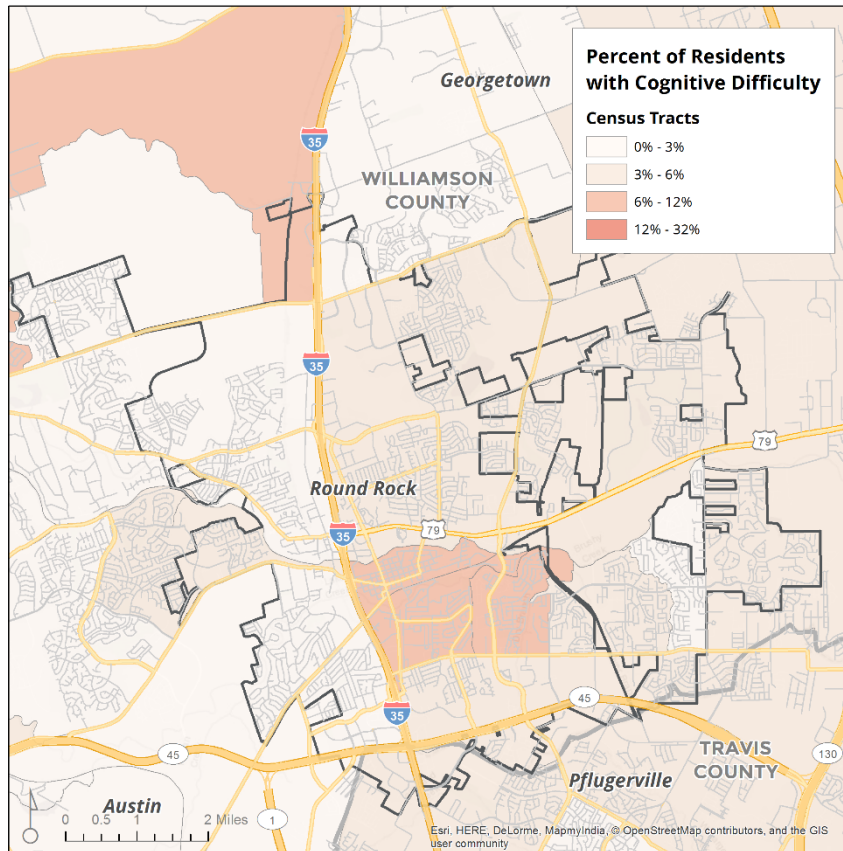
Source: 2000 US Census.

Figure 18.
ROUND ROCK – Percent Persons with Disabilities by
Census Tract, 2016



Source: American Community Survey, 2012-2016.

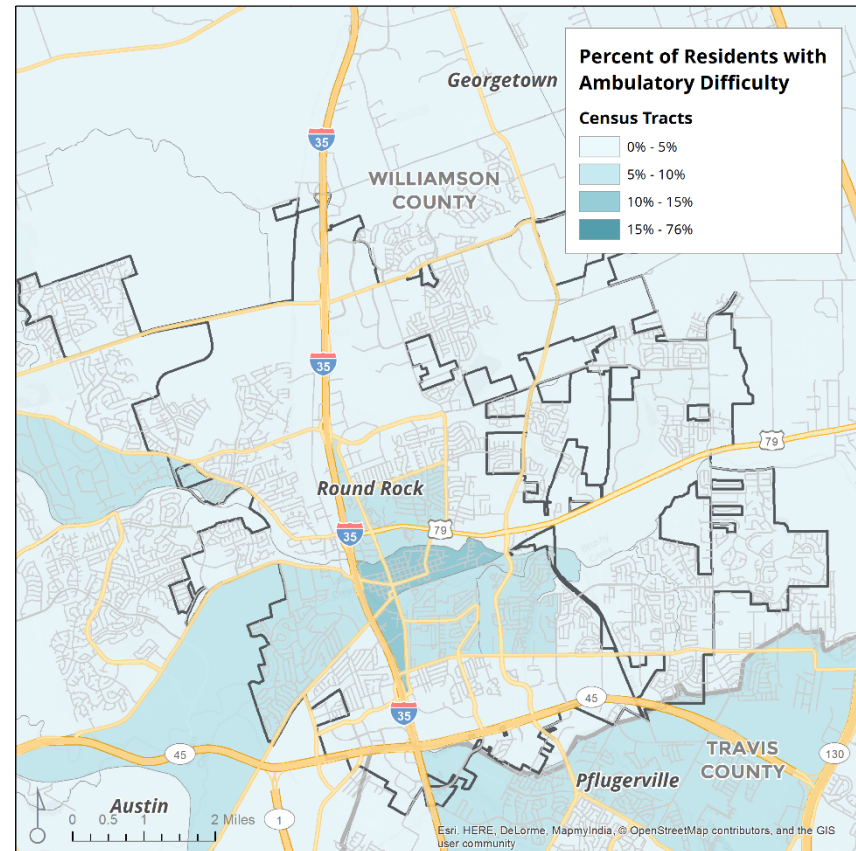
Figure 19.
ROUND ROCK – Percent of Residents with Cognitive
Difficulty, by Census Tract



Note: The ACS defines cognitive difficulty as having serious difficulty concentrating, remembering, or making decisions due to a physical, mental or emotional condition.

Source: Root Policy Research from the 2013-2017 ACS.

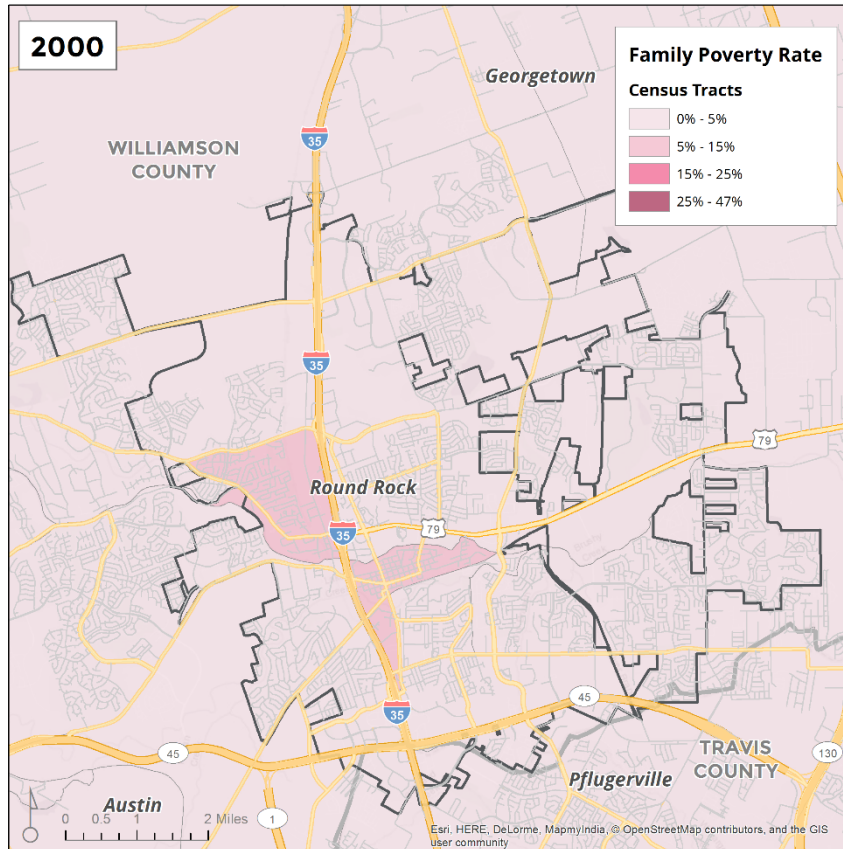
Figure 20.
ROUND ROCK – Percent of Residents with Ambulatory
Difficulty, by Census Tract



Note: The ACS defines ambulatory difficulty as having serious difficulty walking or climbing stairs.

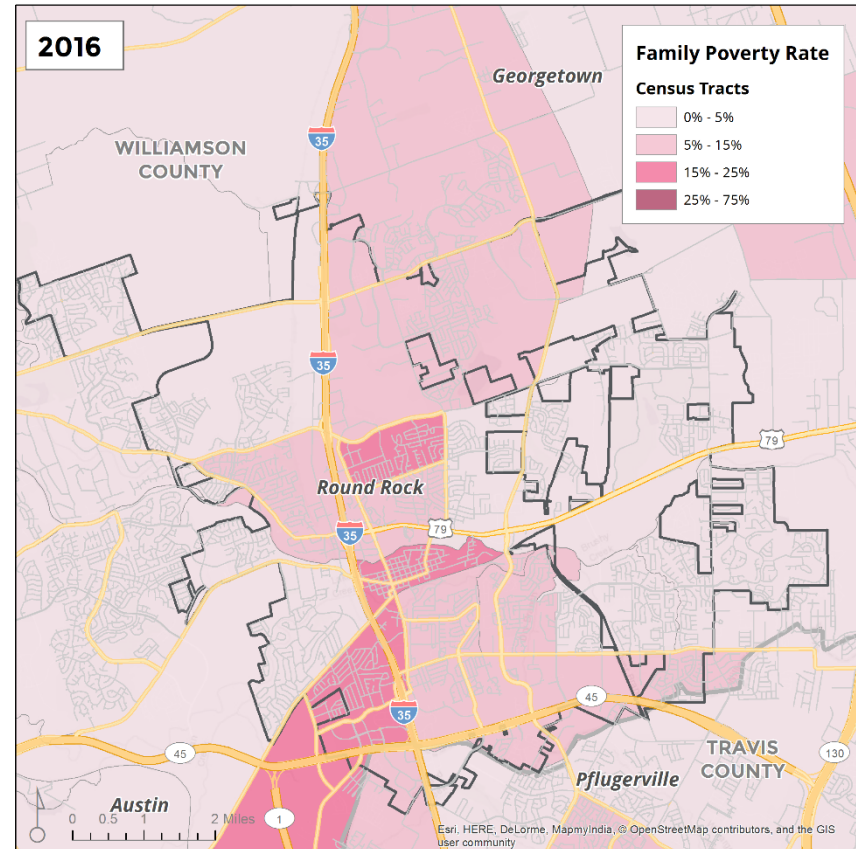
Source: Root Policy Research from the 2013-2017 ACS.

Figure 21.
ROUND ROCK – Percent Poverty by Census Tract, 2000



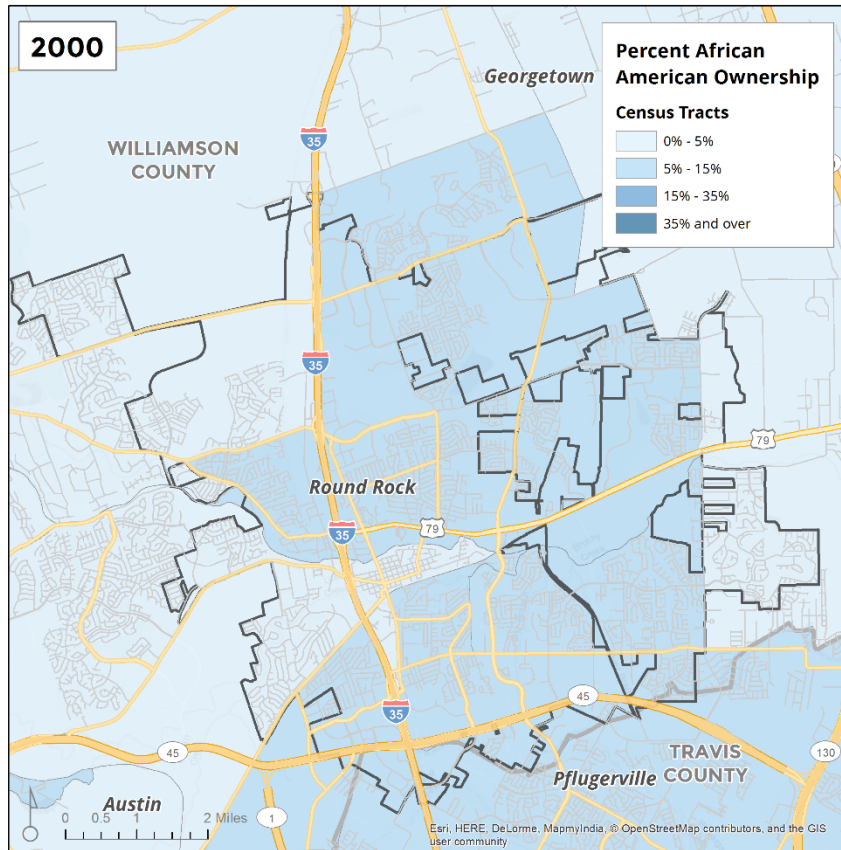
Source: 2000 US Census.

Figure 22.
ROUND ROCK – Percent Poverty by Census Tract, 2016



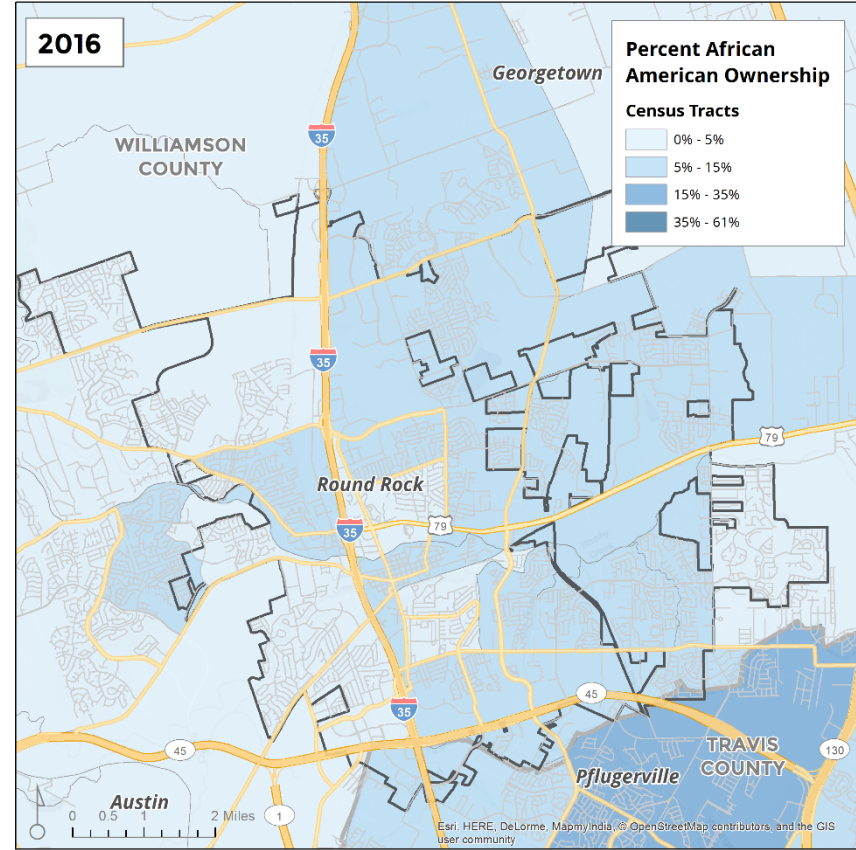
Source: American Community Survey, 2012-2016.

Figure 23.
ROUND ROCK – Percent African American Ownership,
2000



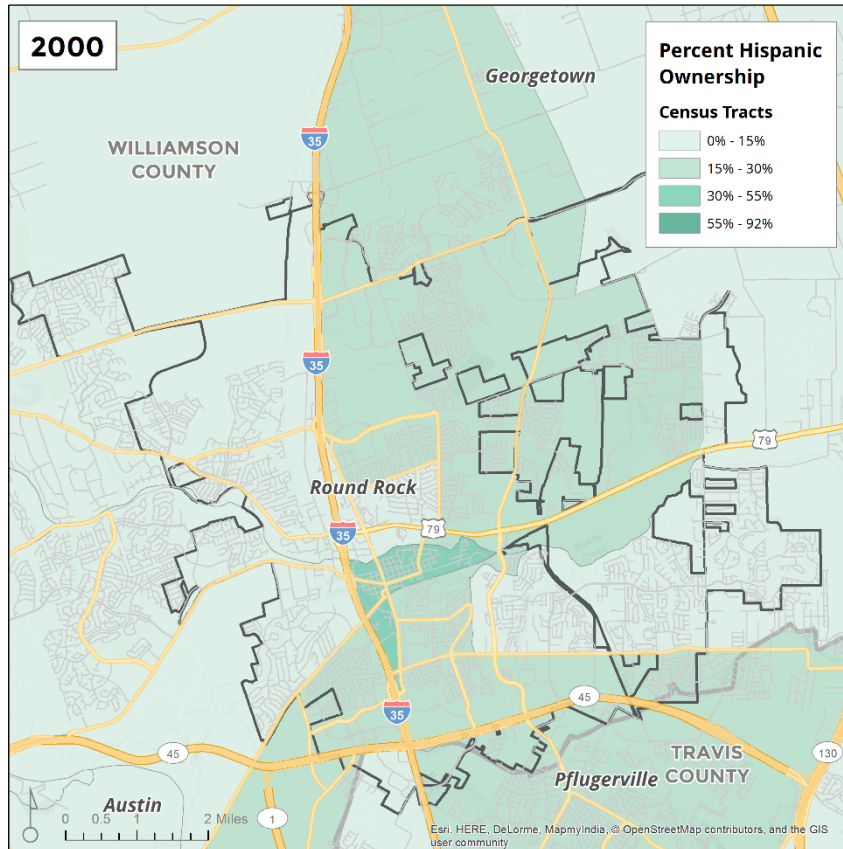
Source: 2000 US Census.

Figure 24.
ROUND ROCK – Percent African American Ownership,
2016



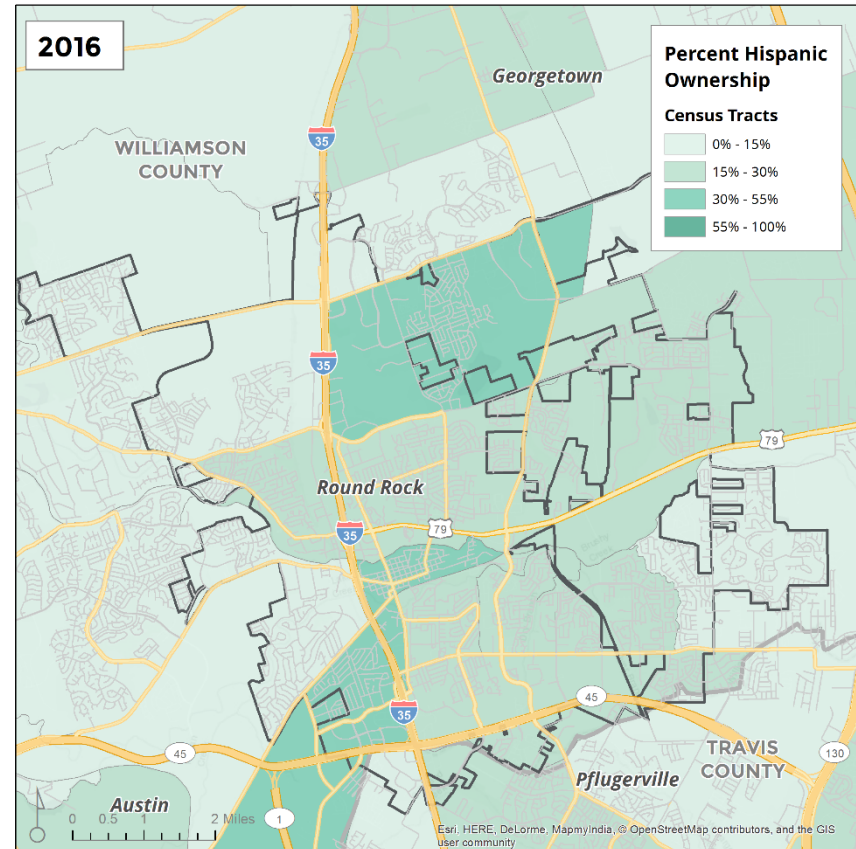
Source: American Community Survey, 2012-2016.

Figure 25.
ROUND ROCK – Percent Hispanic Ownership, 2000



Source: 2000 US Census.

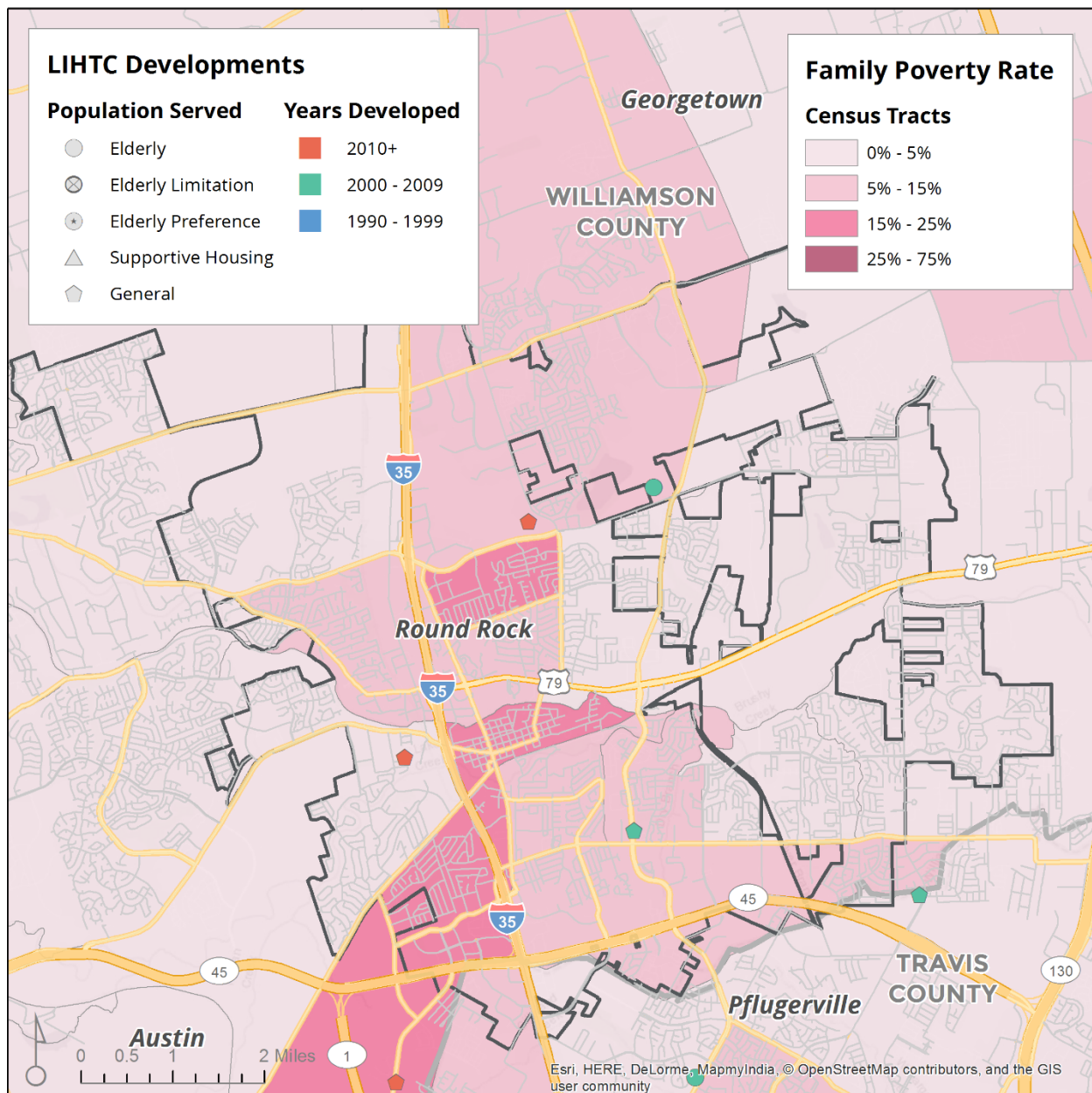
Figure 26.
ROUND ROCK – Percent Hispanic Ownership, 2016



Source: American Community Survey, 2012-2016

Figure 27.

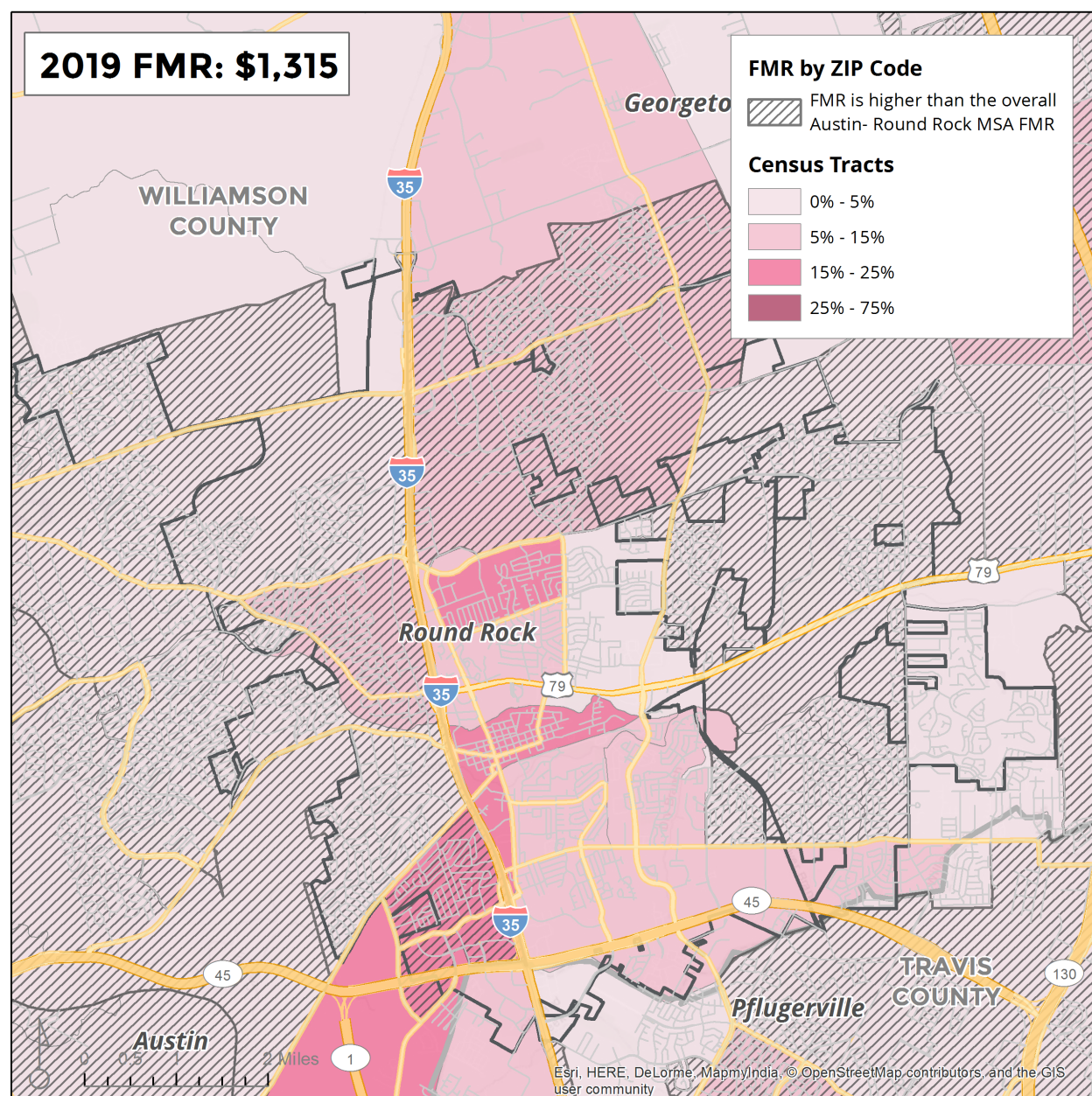
ROUND ROCK – Low-Income Housing Tax Credit (LIHTC) Developments and Poverty Rate by Census Tract, 2016 (Poverty) and 2018 (LIHTC)



Source: TDHCA, ACS 2012-2016.

Figure 28.

ROUND ROCK – Small Area Fair Market Rents (FMR) and Poverty Rates by Census Tract, 2016 (Poverty) and 2019 (FMR)



Note: The 2019 2-bedroom FMR for the Austin-Round Rock area is \$1,315. The crosshatch indicates a ZIP code where the zip code FMR is higher than metro wide FMR.

Source: www.huduser.org; Fair Market Rent database.