

APPENDIX A.

JURISDICTION LEVEL MAPS

TRAVIS COUNTY

Figure 1.
TRAVIS COUNTY – Percent Decline in African American Residents by Census Tract, 2010 to 2016

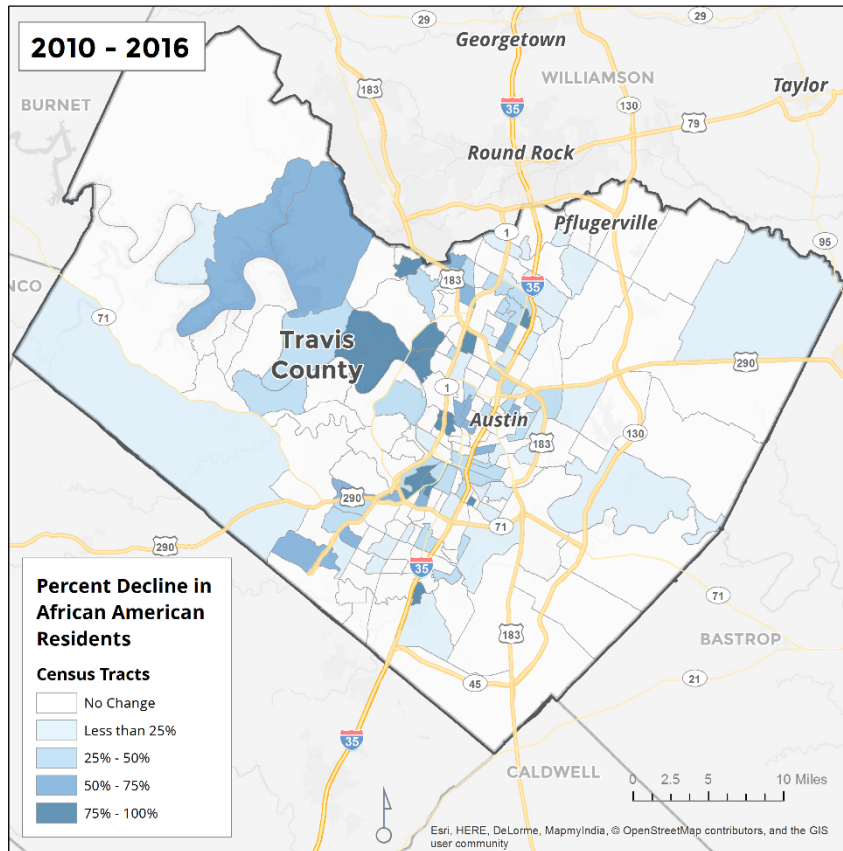


Figure 2.
TRAVIS COUNTY - Percent Increase in African American Residents by Census Tract, 2010 to 2016

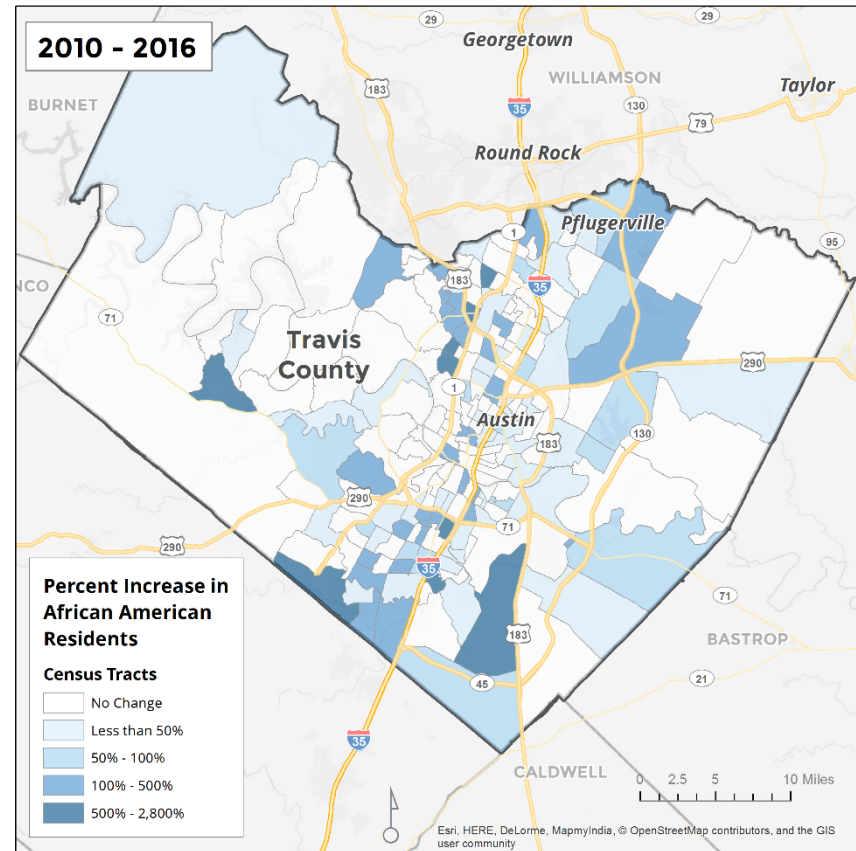
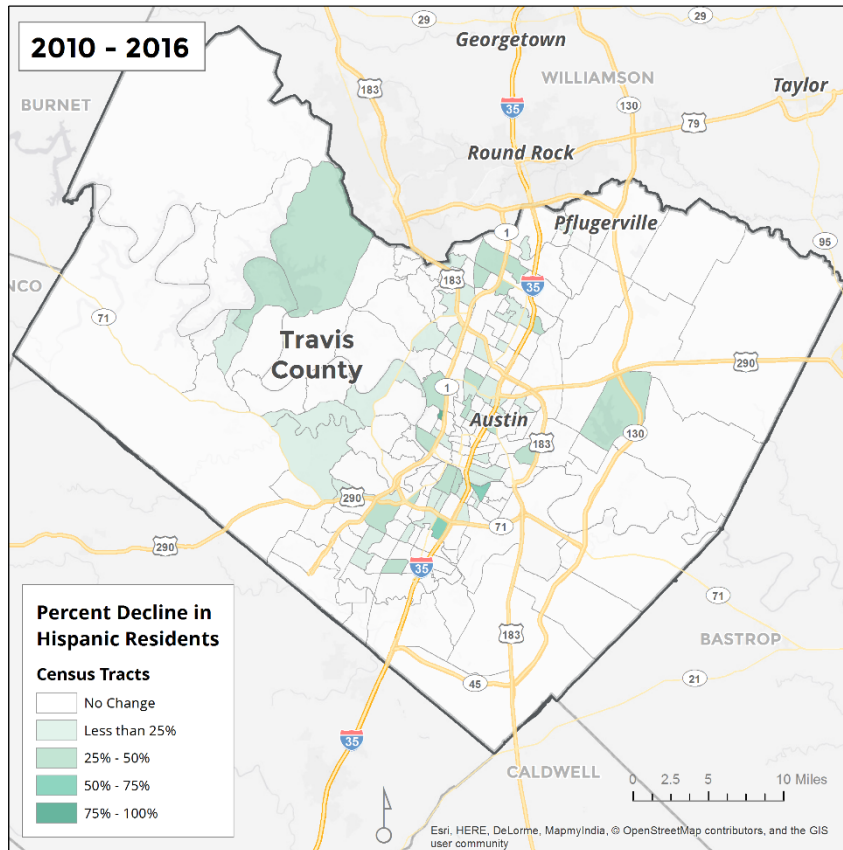
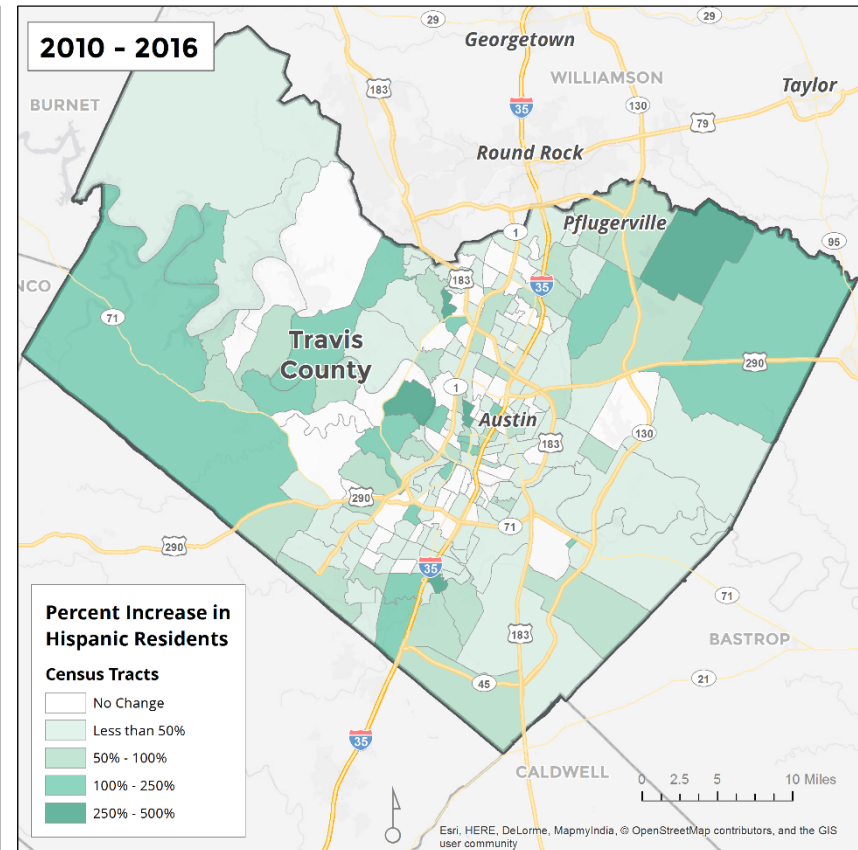


Figure 3.
TRAVIS COUNTY – Percent Decline in Hispanic Residents
by Census Tract, 2010 to 2016



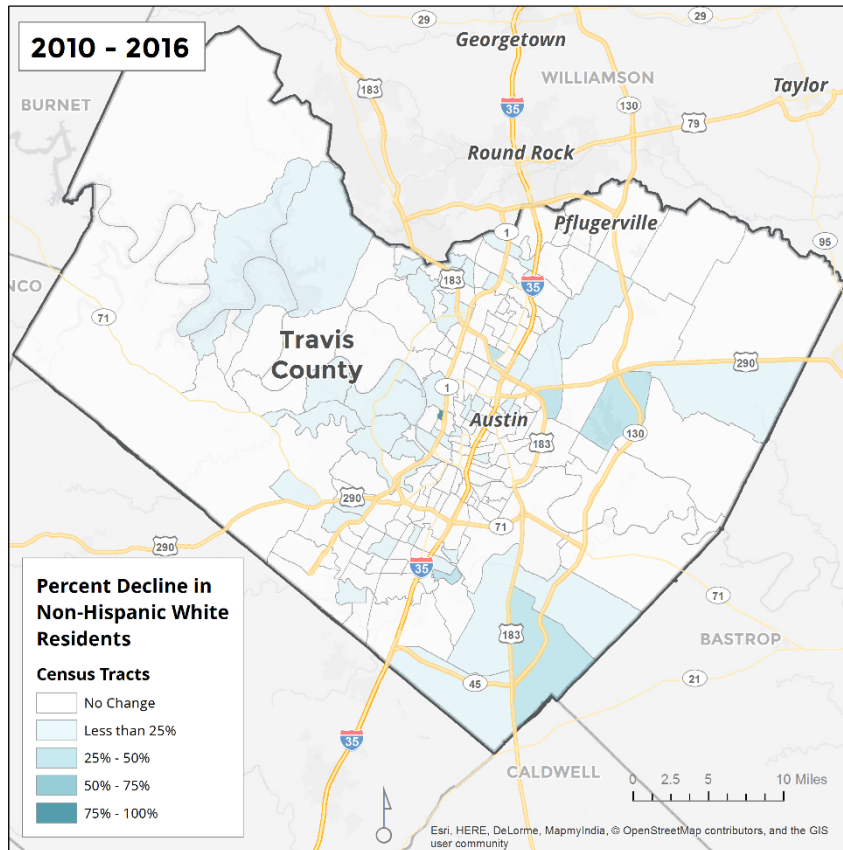
Source: American Community Survey, 2012-2016.

Figure 4.
TRAVIS COUNTY – Percent Increase in Hispanic
by Census Tract, 2010 to 2016



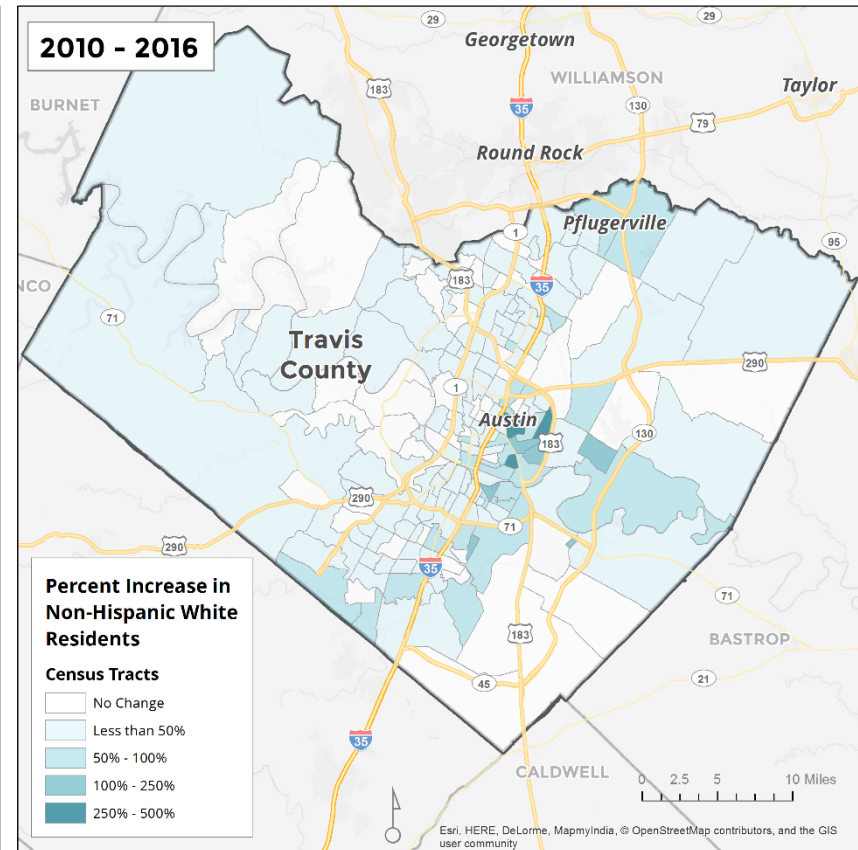
Source: American Community Survey, 2012-2016.

Figure 5.
TRAVIS COUNTY – Percent Decline in Non-Hispanic White
White
Residents by Census Tract, 2010 to 2016



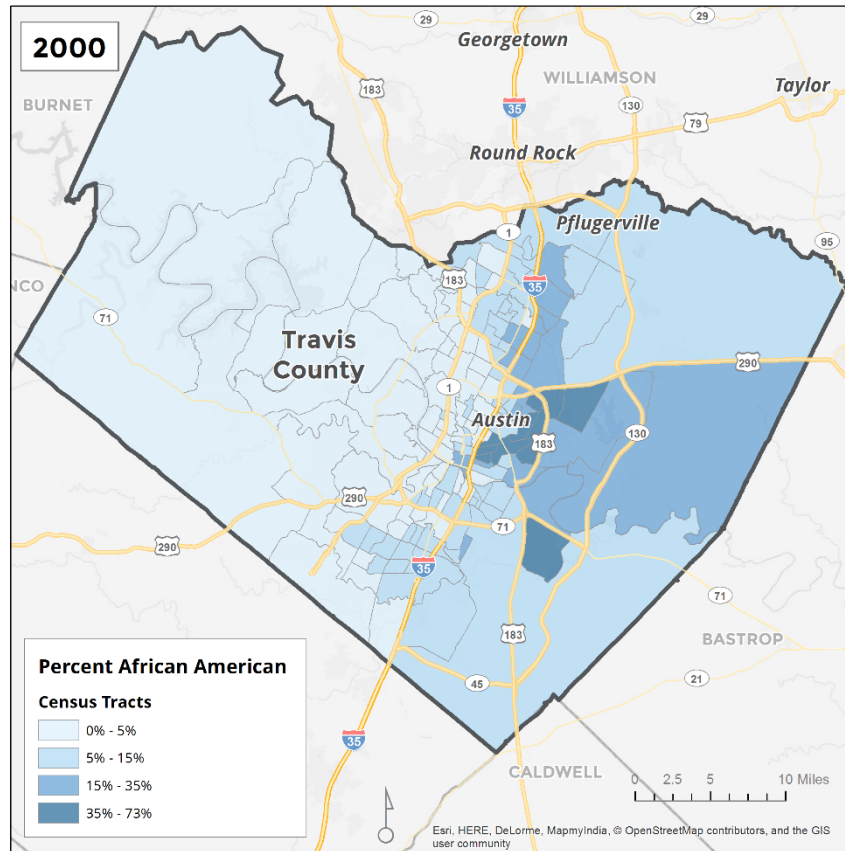
Source: American Community Survey, 2012-2016.

Figure 6.
TRAVIS COUNTY – Percent Increase in Non-Hispanic
Residents by Census Tract, 2010 to 2016



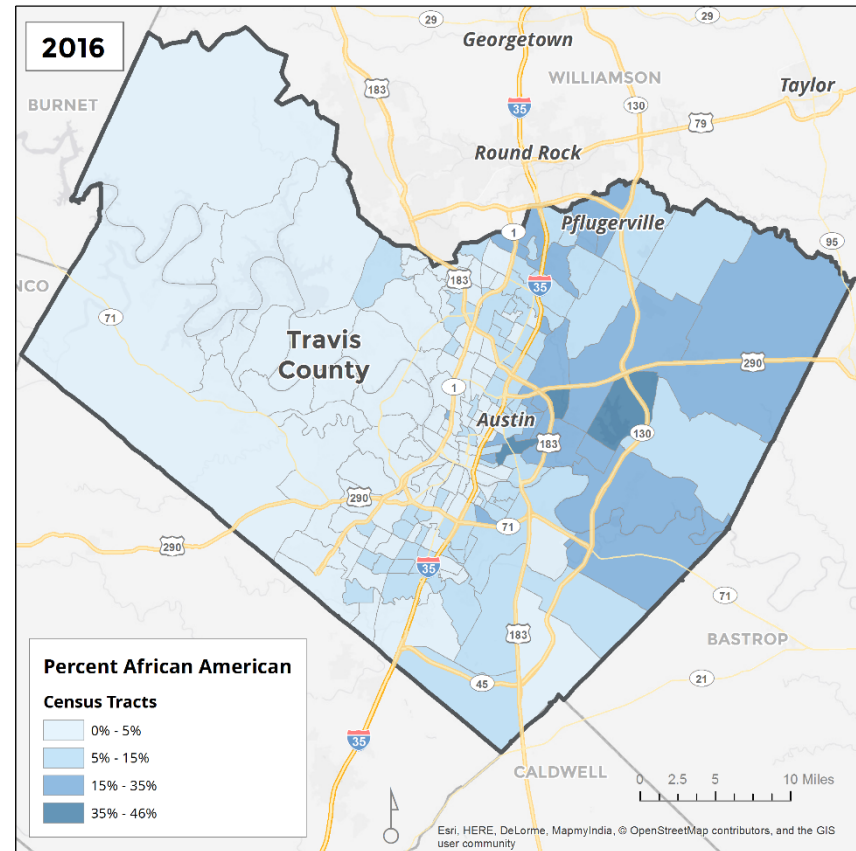
Source: American Community Survey, 2012-2016.

Figure 7.
TRAVIS COUNTY – Percent African American by Census
Tract, 2000



Source: 2000 US Census.

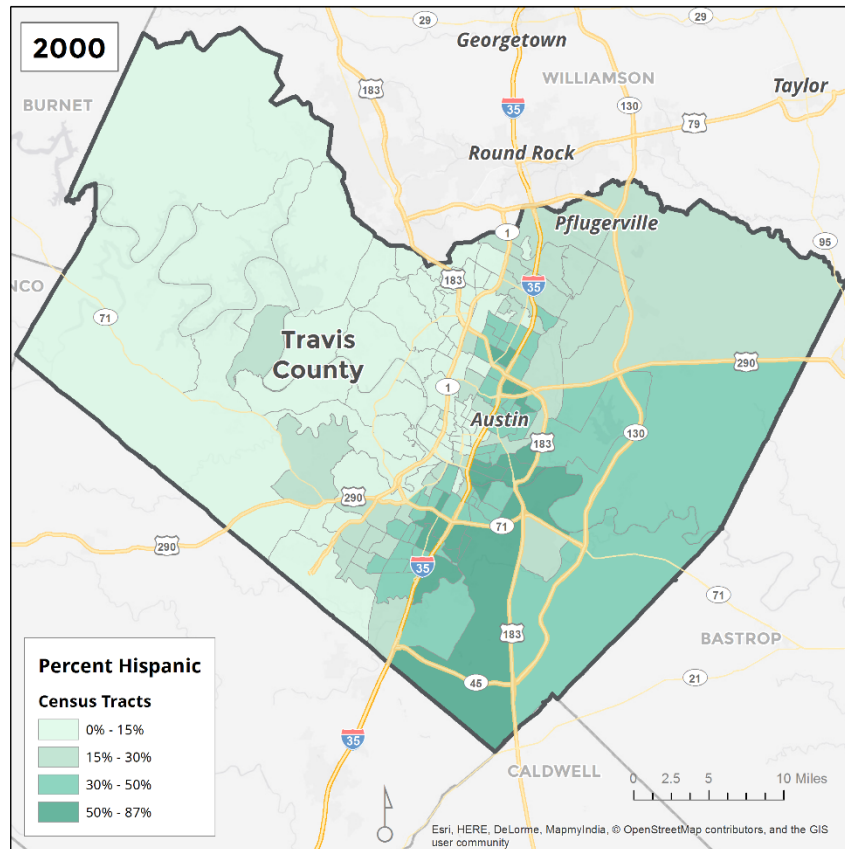
Figure 8.
TRAVIS COUNTY – Percent African American by Census
Tract, 2016



Source: American Community Survey, 2012-2016.

Figure 9.

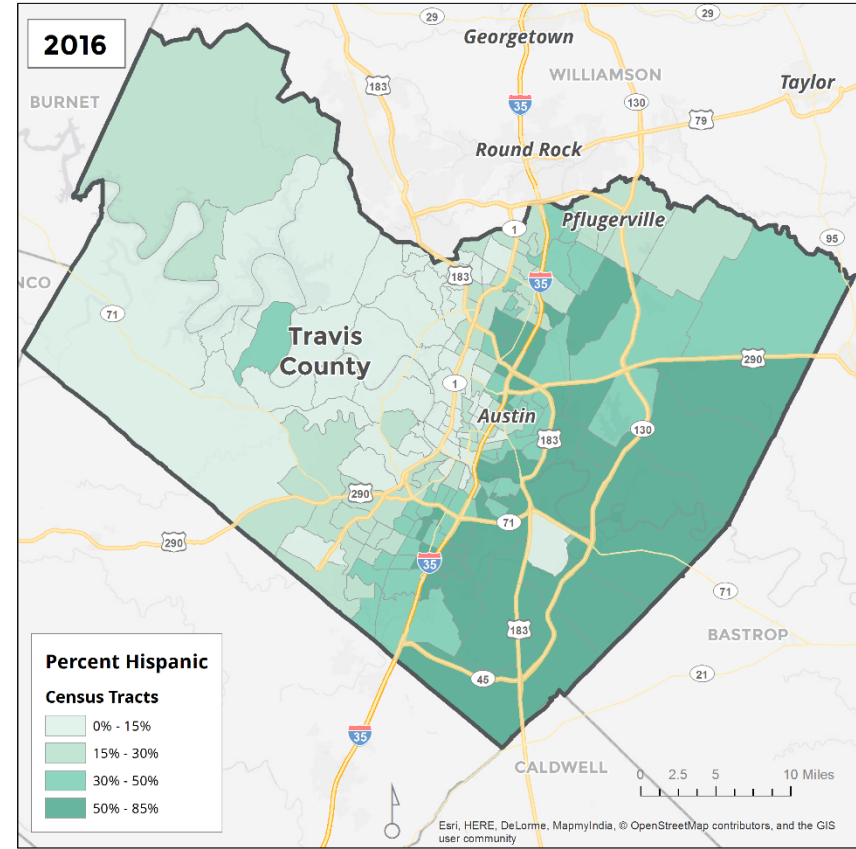
TRAVIS COUNTY – Percent Hispanic by Census Tract, 2000



Source: 2000 US Census.

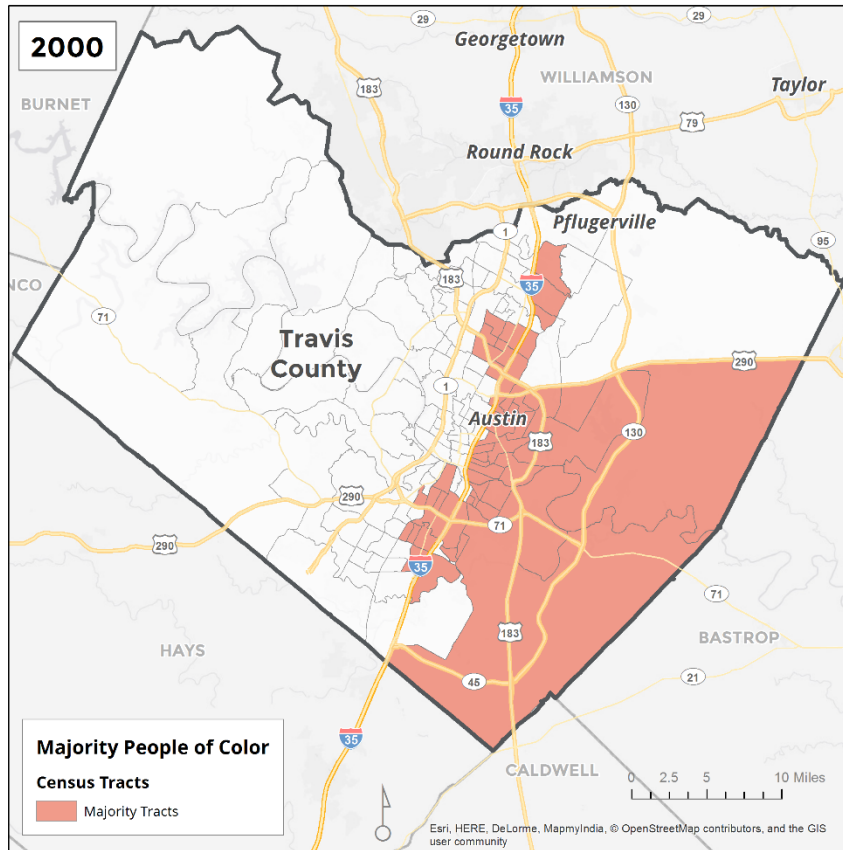
Figure 10.

TRAVIS COUNTY – Percent Hispanic by Census Tract, 2016



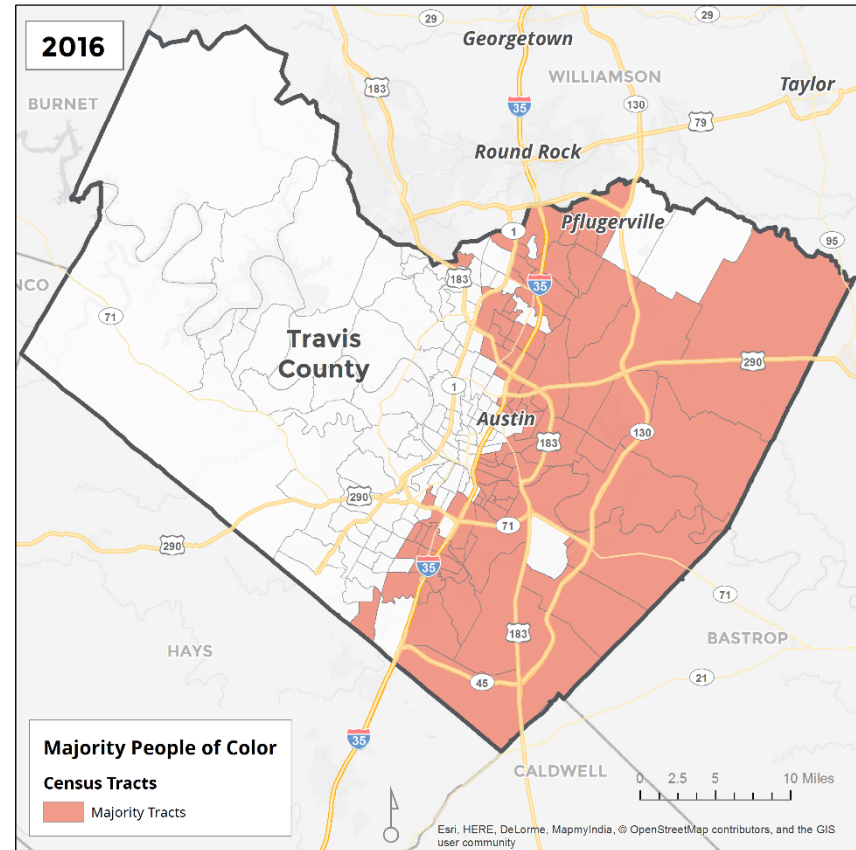
Source: American Community Survey, 2012-2016.

Figure 11.
TRAVIS COUNTY – Majority People of Color by Census
Tract, 2000



Source: 2000 US Census.

Figure 12.
TRAVIS COUNTY – Majority People of Color by Census
Tract, 2016



Source: American Community Survey, 2012-2016.

Figure 13.
TRAVIS COUNTY – Percent Foreign Born by Census Tract,
Tract,
2000

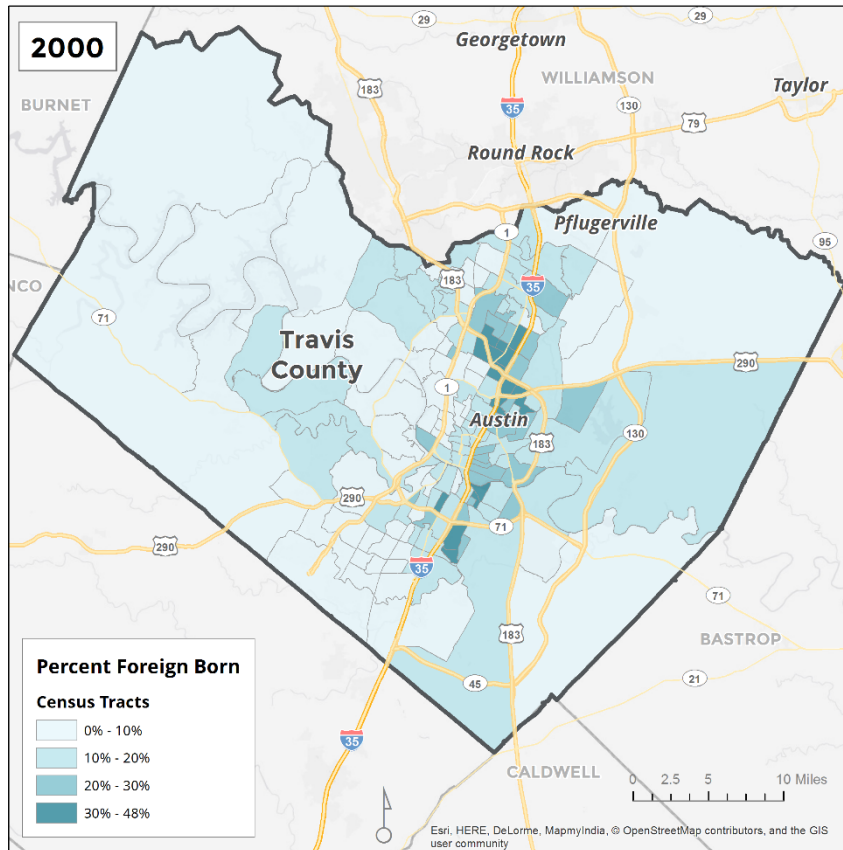


Figure 14.
TRAVIS COUNTY – Percent Foreign Born by Census
2016

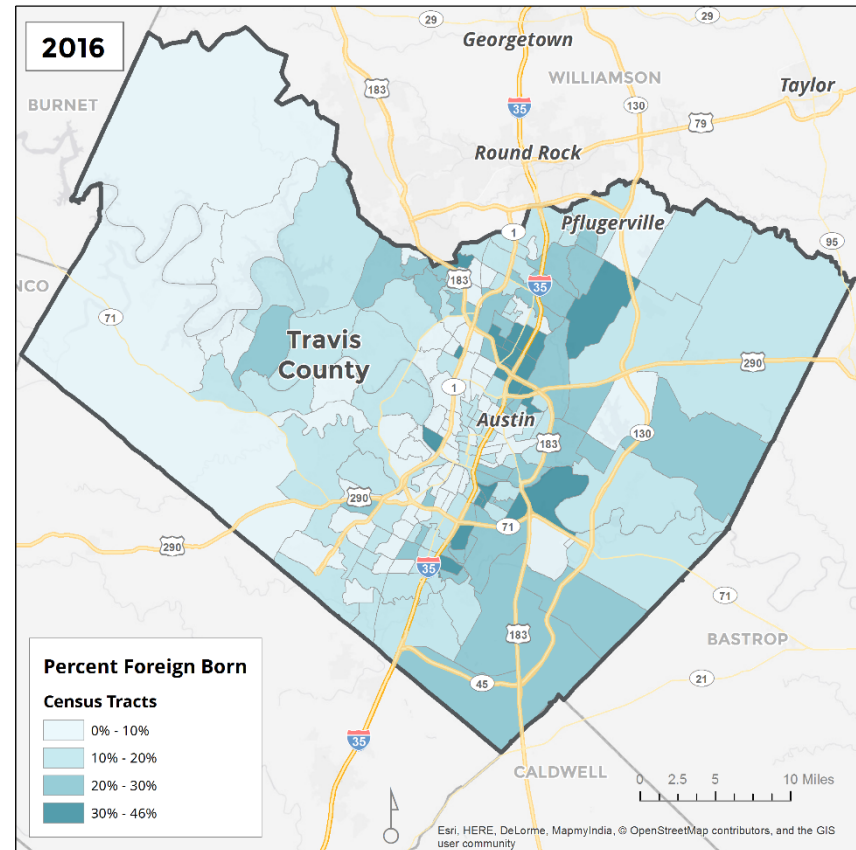
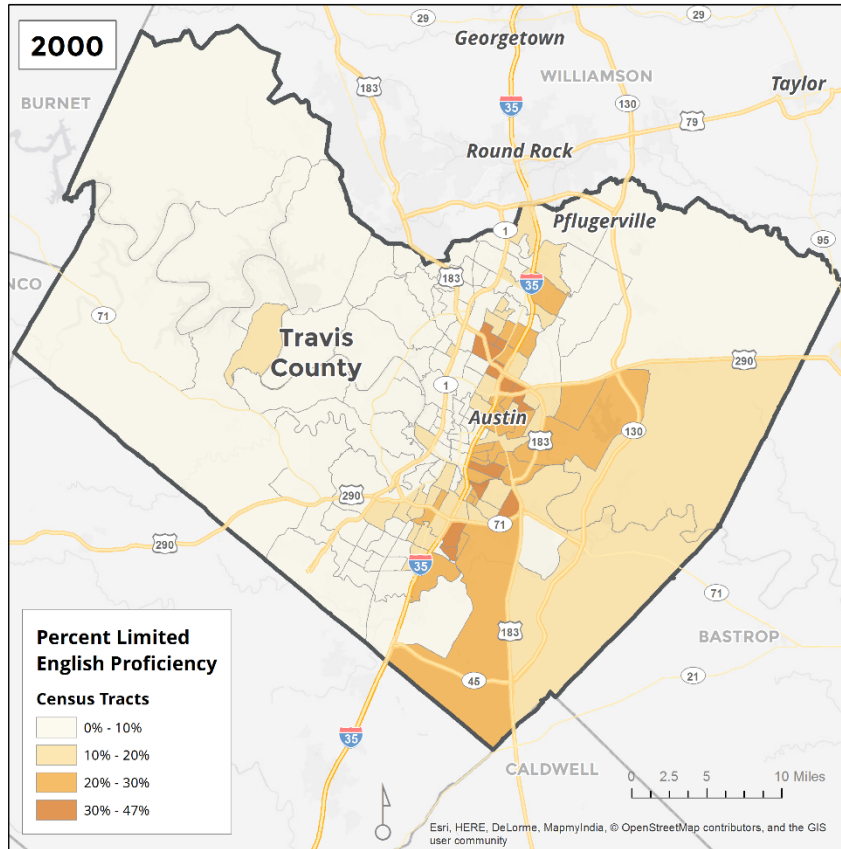
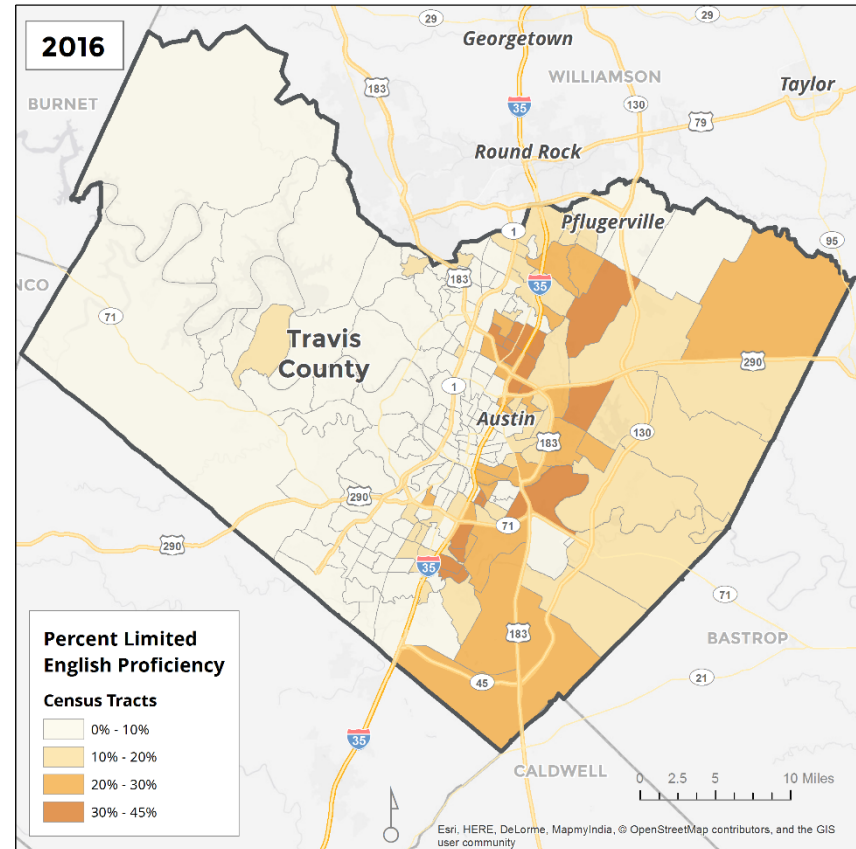


Figure 15.
TRAVIS COUNTY – Percent Limited English Proficiency
by Census Tract, 2000



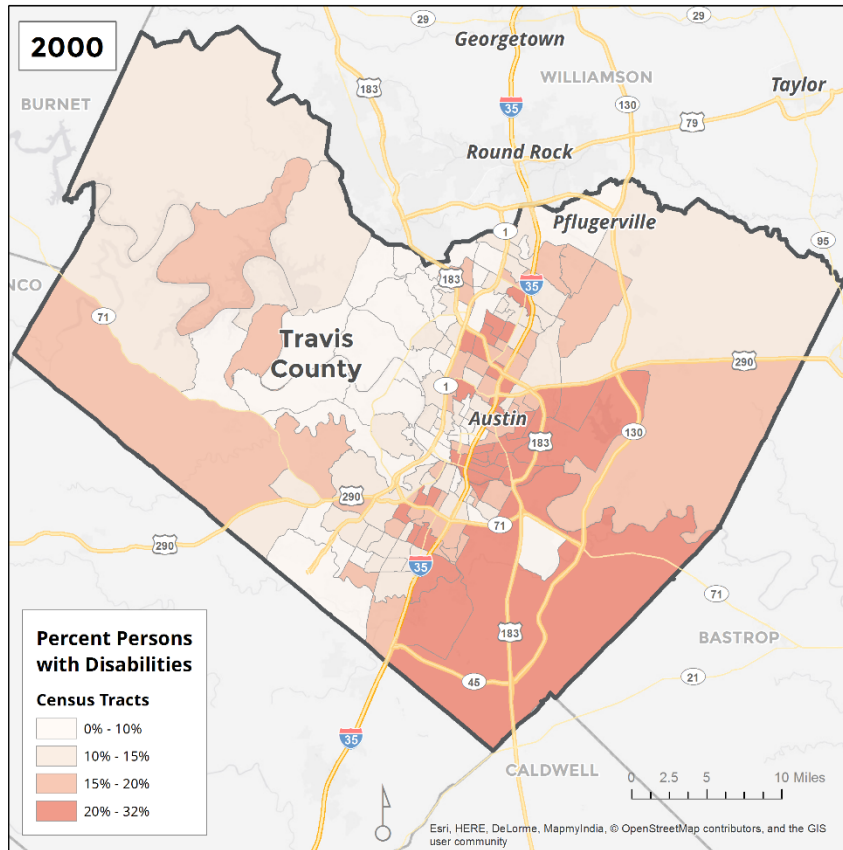
Source: 2000 US Census.

Figure 16.
TRAVIS COUNTY – Percent Limited English Proficiency
by Census Tract, 2016



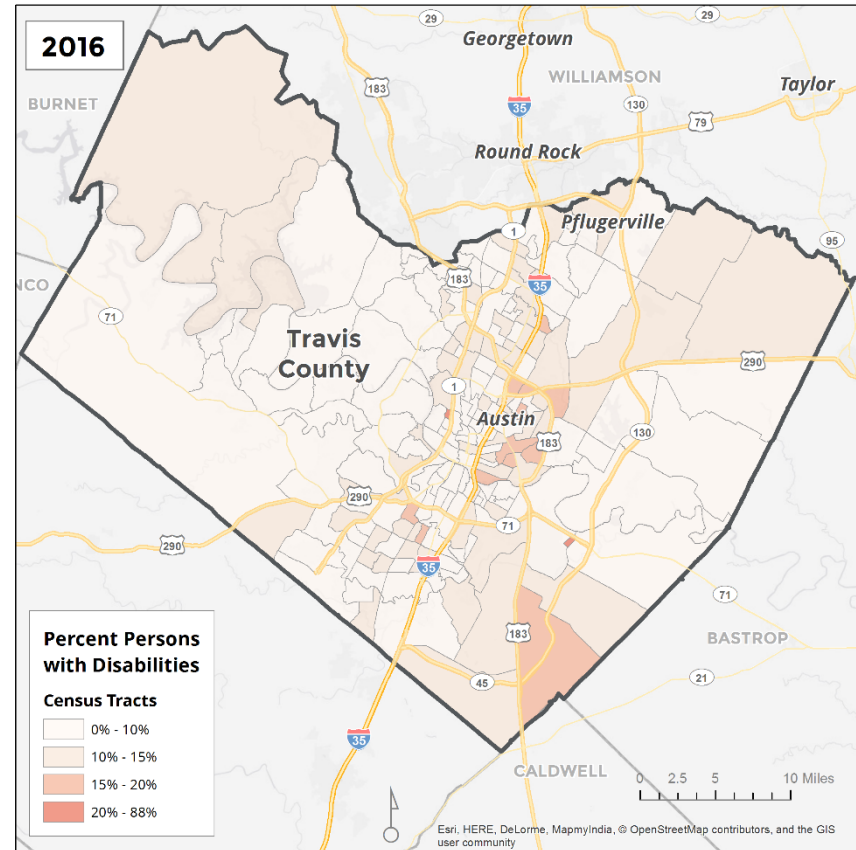
Source: American Community Survey, 2012-2016.

Figure 17.
TRAVIS COUNTY – Percent Persons with Disabilities by
Census Tract, 2000



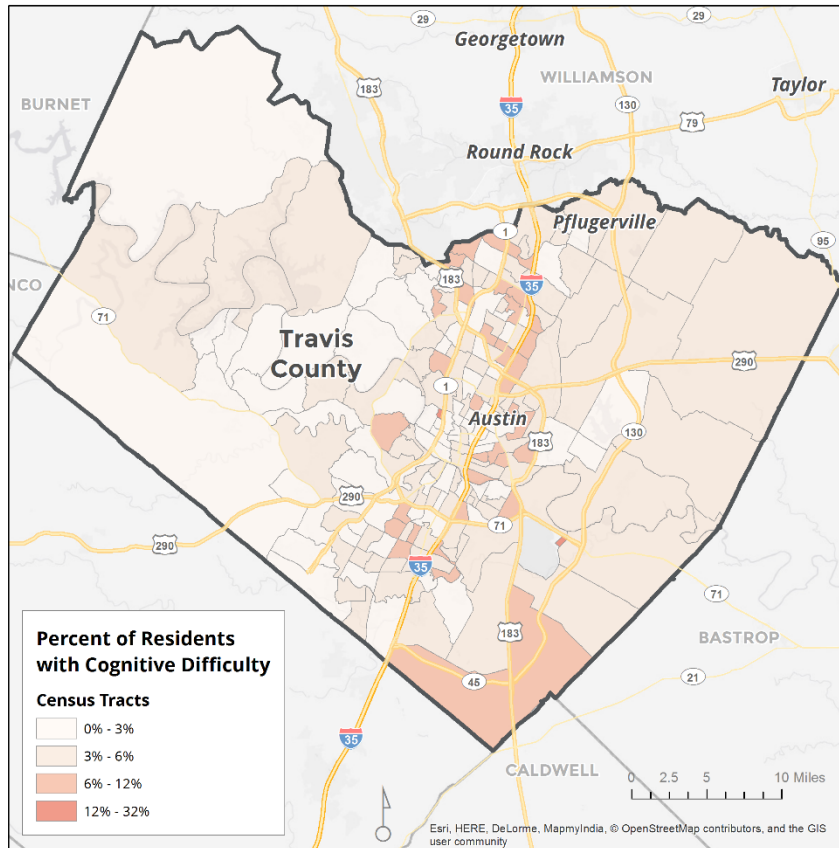
Note: Includes employment disability, which is not captured in the 2016 map.
 Source: 2000 US Census.

Figure 18.
TRAVIS COUNTY – Percent Persons with Disabilities by
Census Tract, 2016



Source: American Community Survey, 2012-2016.

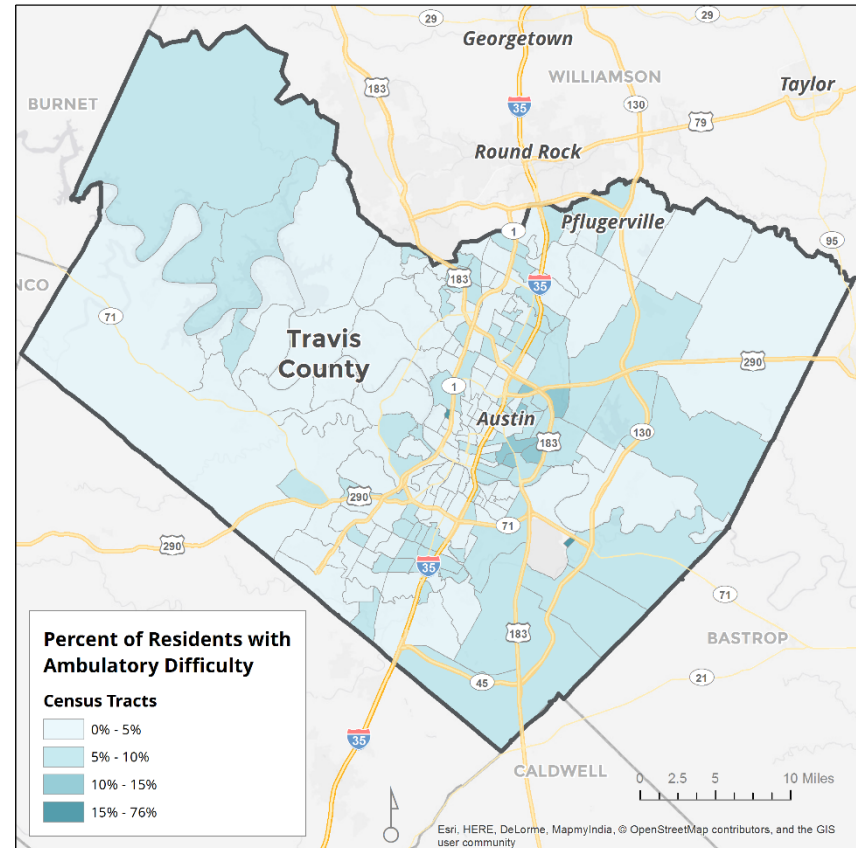
Figure 19.
TRAVIS COUNTY – Percent of Residents with Cognitive
Difficulty, by Census Tract



Note: The ACS defines cognitive difficulty as having serious difficulty concentrating, remembering, or making decisions due to a physical, mental or emotional condition.

Source: Root Policy Research from the 2013-2017 ACS.

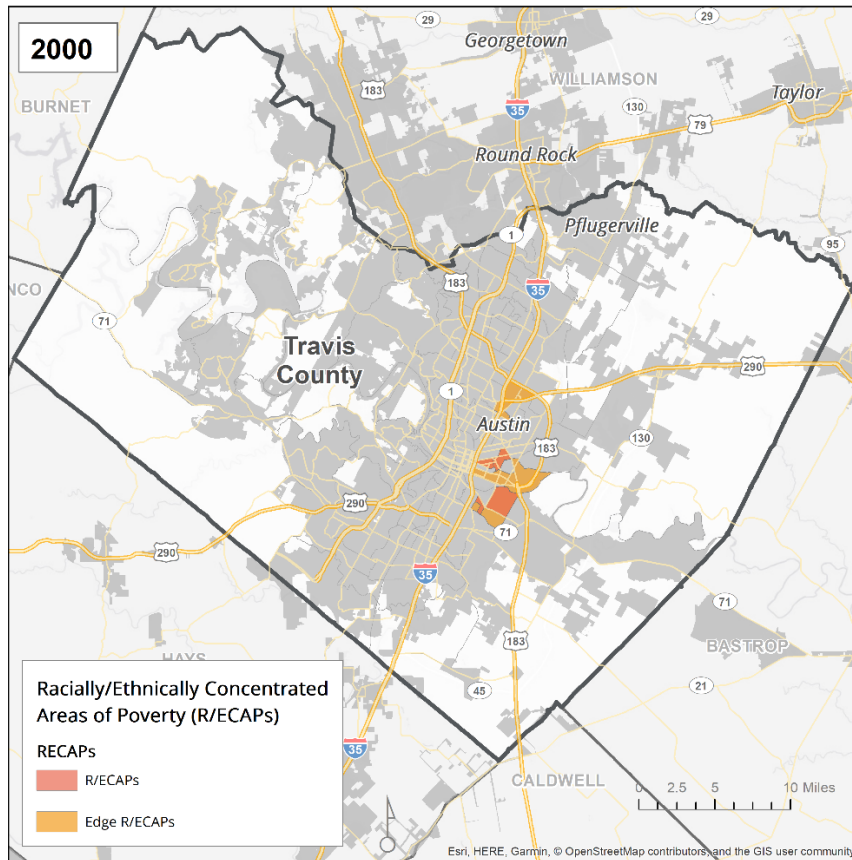
Figure 20.
TRAVIS COUNTY – Percent of Residents with Ambulatory
Difficulty, by Census Tract



Note: The ACS defines ambulatory difficulty as having serious difficulty walking or climbing stairs.

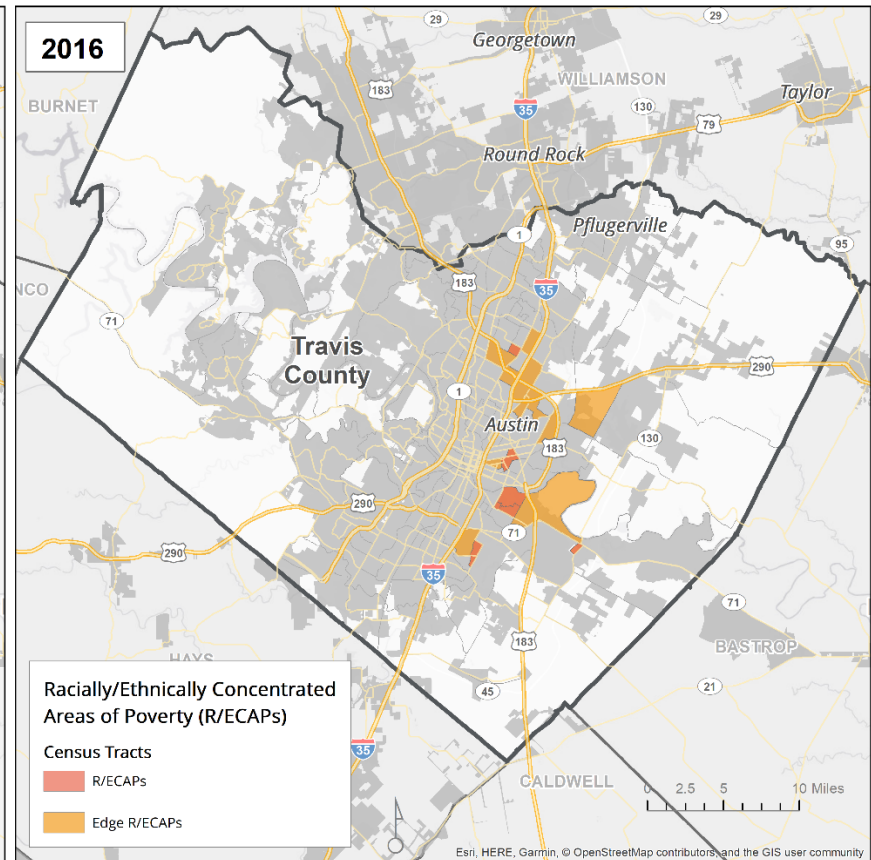
Source: Root Policy Research from the 2013-2017 ACS.

Figure 21.
TRAVIS COUNTY – R/ECAPS and Edge R/ECAPs, 2000



Source: 2000 US Census.

Figure 22.
TRAVIS COUNTY – R/ECAPS and Edge R/ECAPs, 2016



Source: American Community Survey, 2012-2016.

Figure 23.

TRAVIS COUNTY – Percent Poverty by Census Tract, 2000

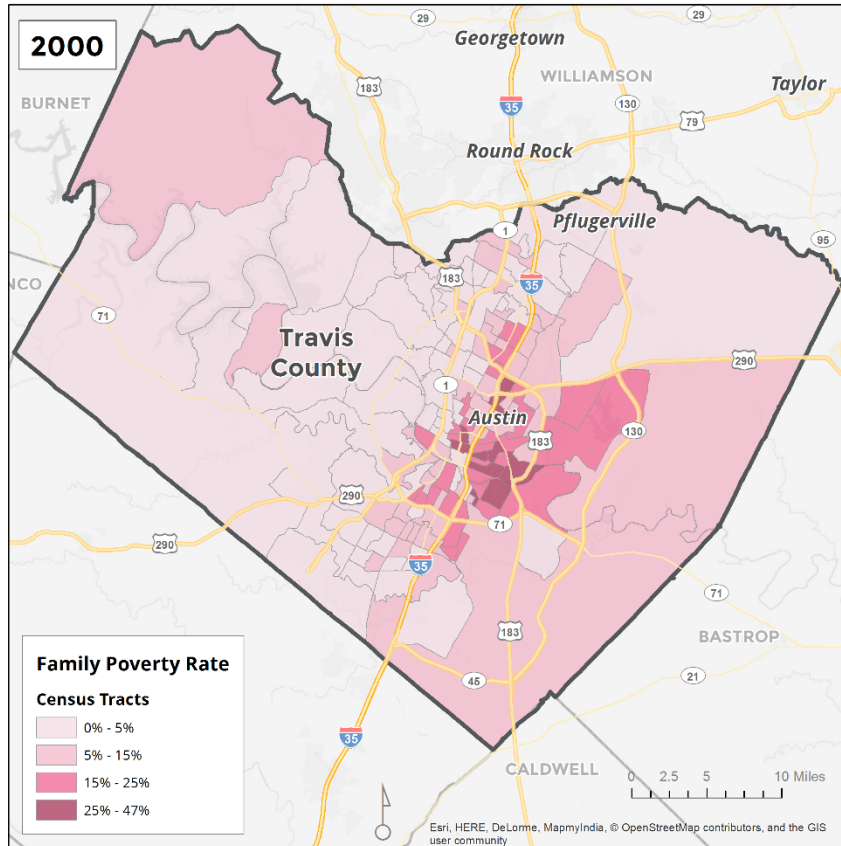


Figure 24.

TRAVIS COUNTY – Percent Poverty by Census Tract, 2016

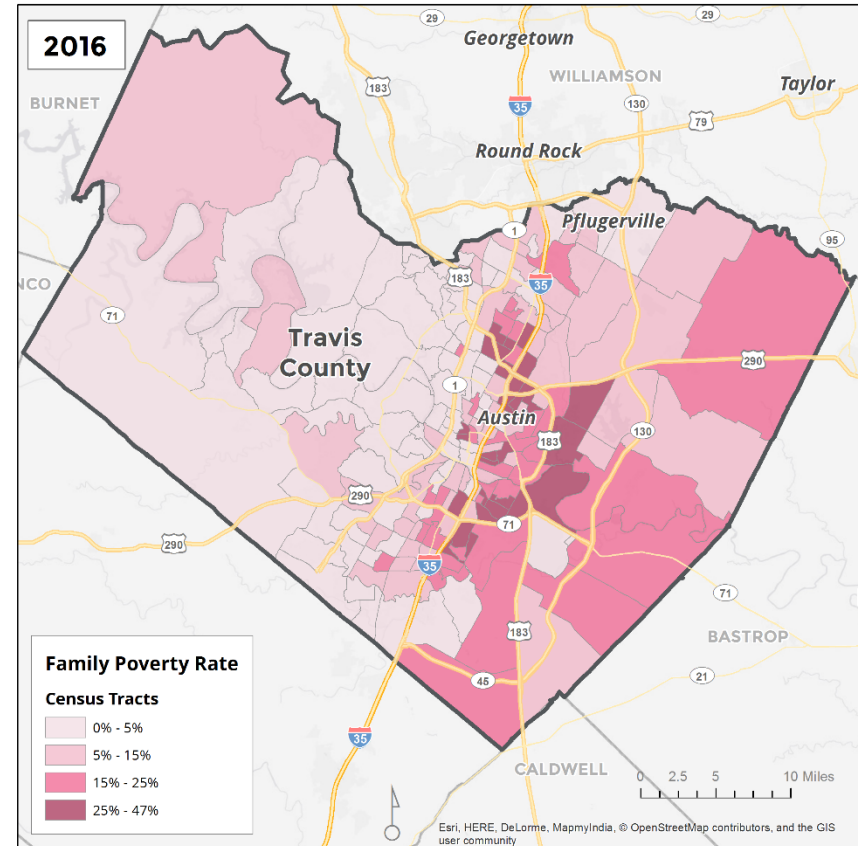
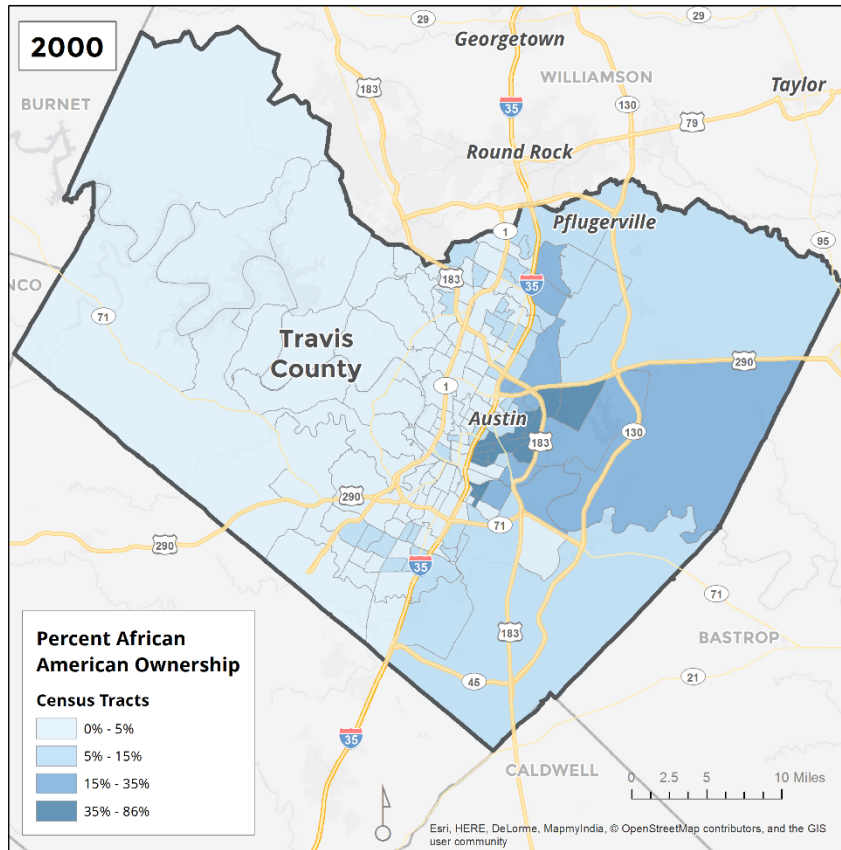
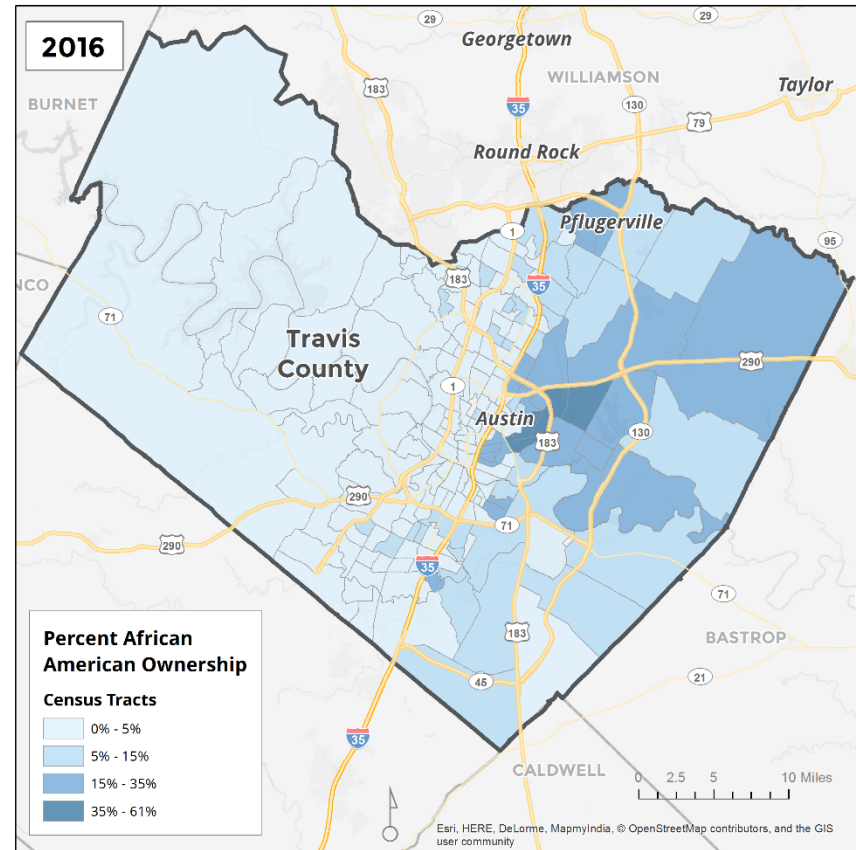


Figure 25.
TRAVIS COUNTY – Percent African American Ownership,
2000



Source: 2000 US Census.

Figure 26.
TRAVIS COUNTY – Percent African American Ownership,
2016



Source: American Community Survey, 2012-2016.

Figure 27.
TRAVIS COUNTY – Percent Hispanic Ownership, 2000

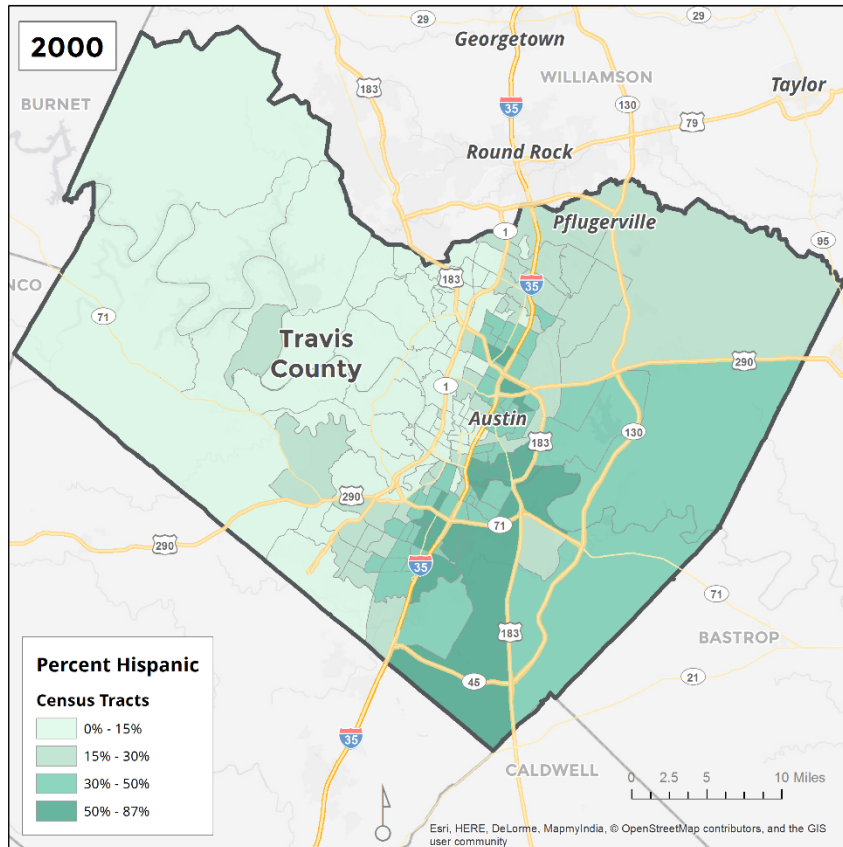


Figure 28.
TRAVIS COUNTY – Percent Hispanic Ownership, 2016

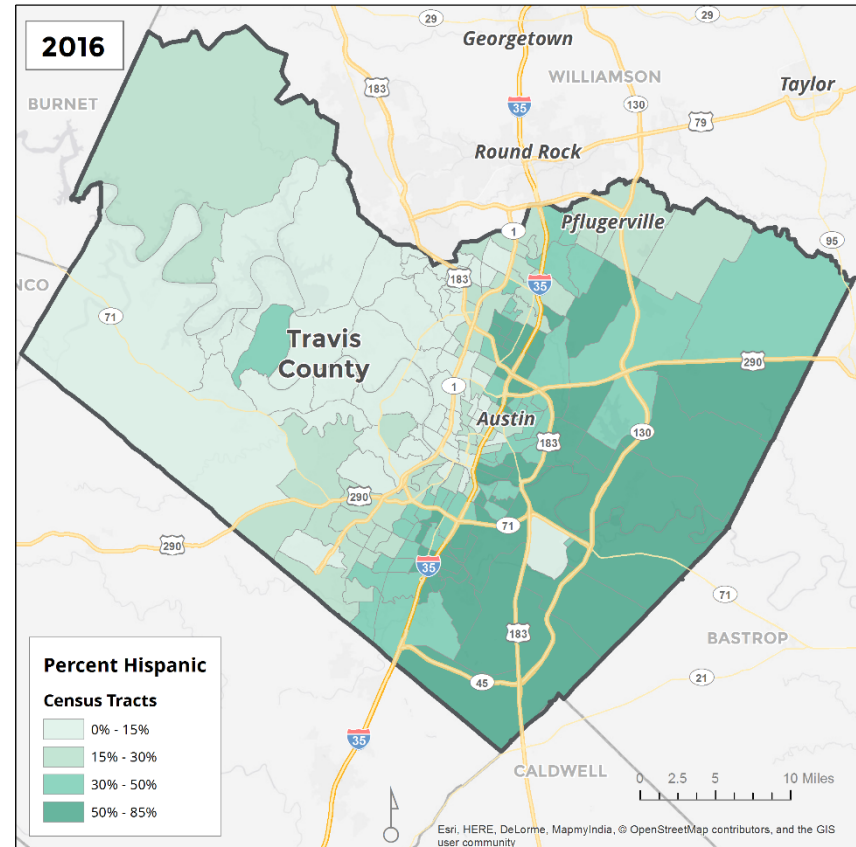
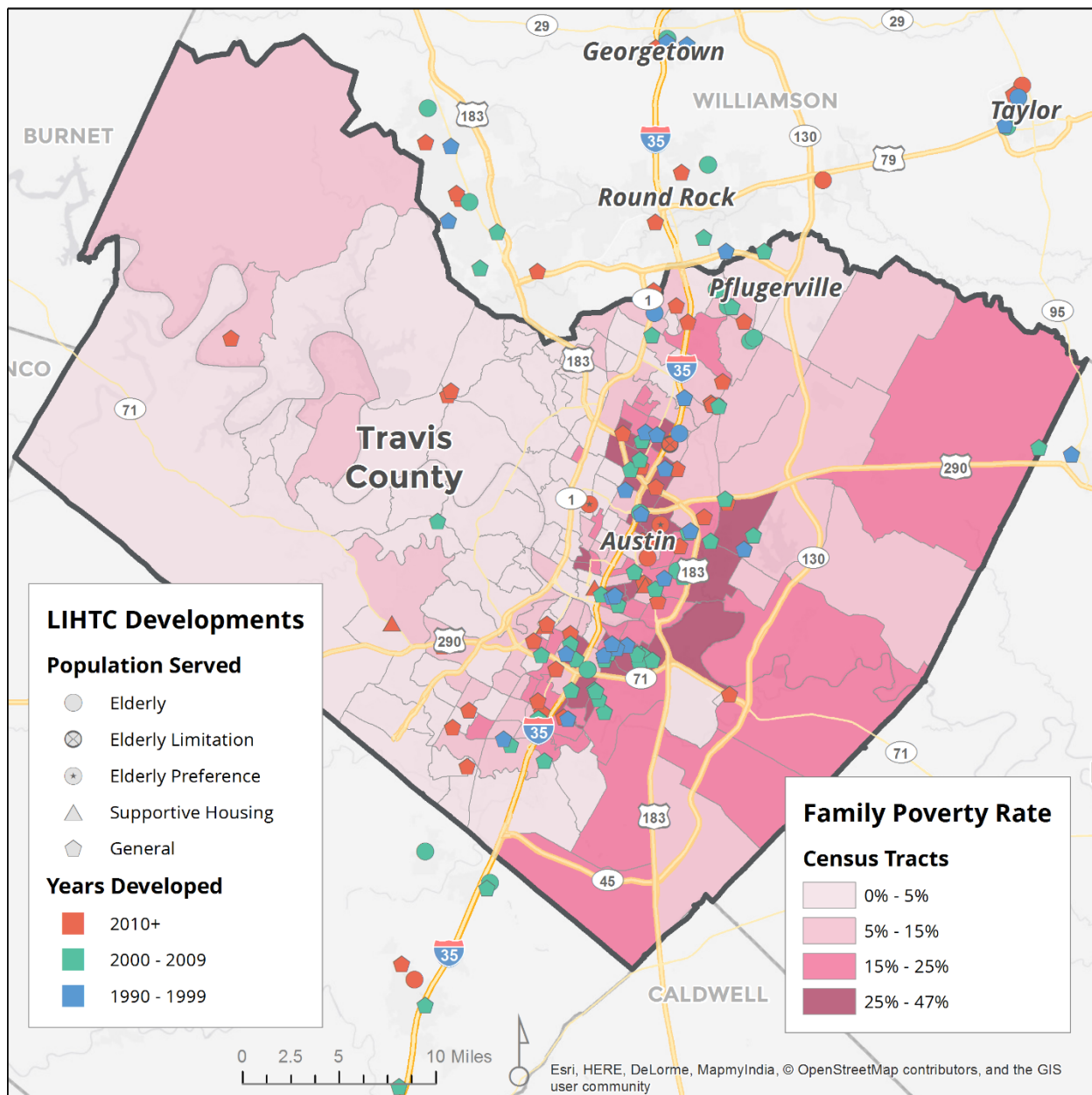


Figure 29.

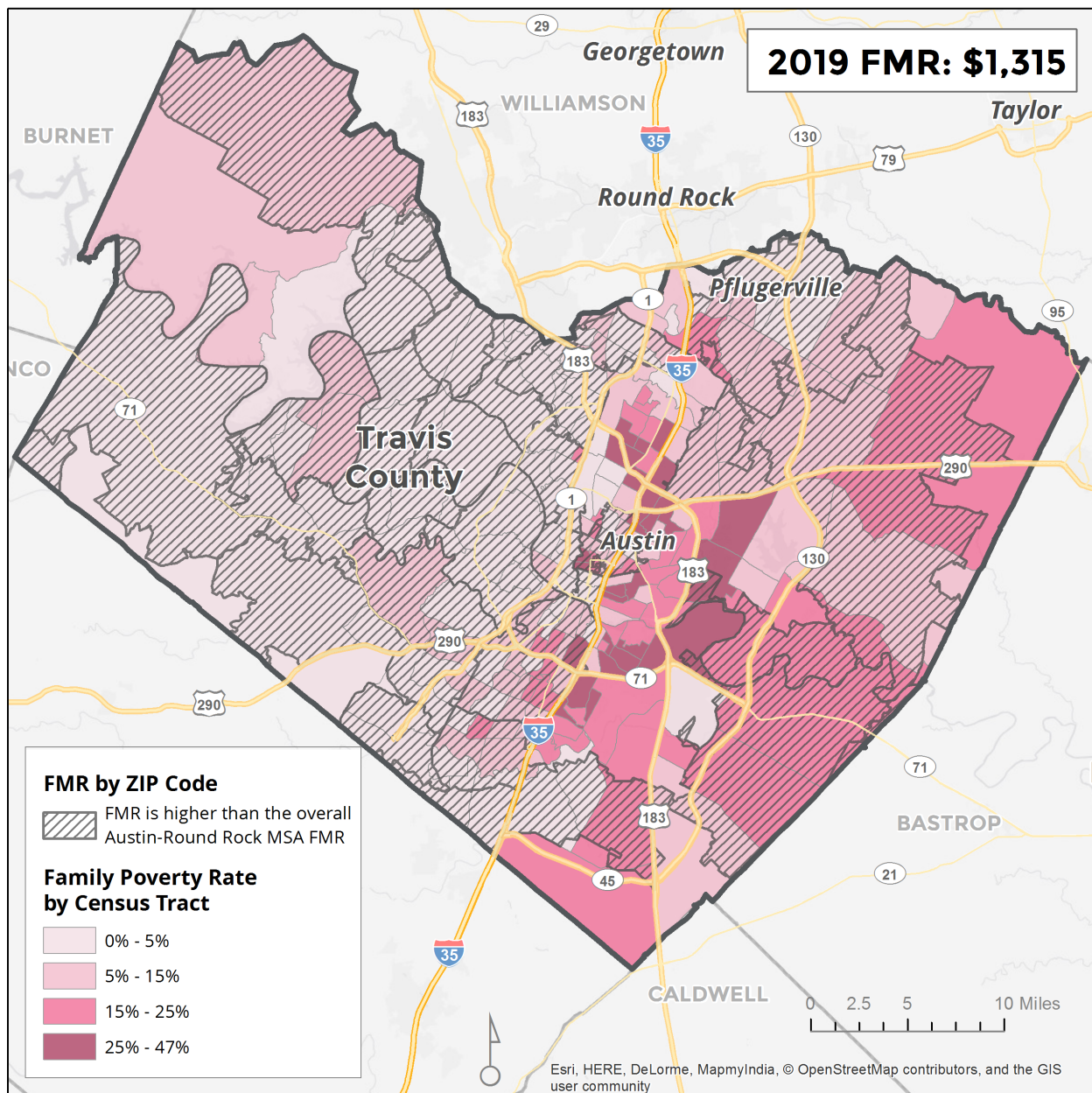
TRAVIS COUNTY – Low-Income Housing Tax Credit (LIHTC) Developments and Poverty Rate by Census Tract, 2016 (Poverty) and 2018 (LIHTC)



Source: TDHCA, ACS 2012-2016.

Figure 30.

TRAVIS COUNTY – Small Area Fair Market Rents (FMR) and Poverty Rates by Census Tract, 2016 (Poverty) and 2019 (FMR)



Note: The 2019 2-bedroom FMR for the Austin-Round Rock area is \$1,315. The crosshatch indicates a ZIP code where the zip code FMR is higher than metro wide FMR.

Source: www.huduser.org; Fair Market Rent database.