

Table 3 - Racial/Ethnic Dissimilarity Trends, Travis County, CDBG Service Areas Only

	(Travis County, TX CDBG) Jurisdiction				(Austin-Round Rock, TX) Region			
Racial/Ethnic Dissimilarity Index	1990 Trend	2000 Trend	2010 Trend	Current	1990 Trend	2000 Trend	2010 Trend	Current
Non-White/White	39.30	39.73	43.97	46.33	41.09	41.36	38.57	41.45
Black/White	56.02	52.39	59.04	61.69	54.14	51.20	48.40	52.33
Hispanic/White	34.01	39.19	46.62	49.10	41.65	45.64	43.23	45.37
Asian or Pacific Islander/White	35.72	38.40	30.43	37.71	39.76	40.23	38.36	44.28

Table 3 - Racial/Ethnic Dissimilarity Trends, Williamson County, Including Incorporated Areas

	(Williamson County, TX CDBG) Jurisdiction				(Austin-Round Rock, TX) Region			
Racial/Ethnic Dissimilarity Index	1990 Trend	2000 Trend	2010 Trend	Current	1990 Trend	2000 Trend	2010 Trend	Current
Non-White/White	36.10	24.22	23.52	24.21	41.09	41.36	38.57	35.75
Black/White	53.36	37.08	34.58	40.59	54.14	51.20	48.40	49.54
Hispanic/White	33.53	27.82	27.47	27.72	41.65	45.64	43.23	41.63
Asian or Pacific Islander/White	39.57	40.70	41.49	42.26	39.76	40.23	38.36	41.56

Table 3 - Racial/Ethnic Dissimilarity Trends, Williamson County, CDBG Service Areas Only

	(Williamson County, TX CDBG) Jurisdiction				(Austin-Round Rock, TX) Region			
Racial/Ethnic Dissimilarity Index	1990 Trend	2000 Trend	2010 Trend	Current	1990 Trend	2000 Trend	2010 Trend	Current
Non-White/White	36.10	24.22	23.52	26.92	41.09	41.36	38.57	41.45
Black/White	53.36	37.08	34.58	39.01	54.14	51.20	48.40	52.33
Hispanic/White	33.53	27.82	27.47	29.76	41.65	45.64	43.23	45.37
Asian or Pacific Islander/White	39.57	40.70	41.49	46.21	39.76	40.23	38.36	44.28

Source: Decennial Census.

Refer to the Data Documentation for details (www.hudexchange.info/resource/4848/affh-data-documentation).

Racially or Ethnically Concentrated Areas of Poverty (R/ECAPs)

HUD has developed a framework to examine economic opportunity at the neighborhood level, with a focus on racial and ethnic minorities. That focus is related to the history racial and ethnic segregation, which often limited economic opportunity.

“Racially or ethnically concentrated areas of poverty,” also known as R/ECAPs, are neighborhoods in which there are both racial concentrations and high poverty rates.

HUD’s definition of an R/ECAP is:

- A census tract that has a Non-White population of 50 percent or more (majority-minority) or, for non-urban areas, 20 percent, AND a poverty rate of 40 percent or more; OR
- A census tract that has a Non-white population of 50 percent or more (majority-minority) AND the poverty rate is three times the average tract poverty rate for the county, whichever is lower.

Why R/ECAPs matter. The 40 percent poverty threshold used in the R/ECAP definition is based on research identifying this to be the point at which an area becomes socially and economically dysfunctional. Conversely, research has shown that areas with up to 14 percent of poverty have no noticeable effect on community opportunity.⁸

Households within R/ECAP tracts frequently represent the most disadvantaged households within a community and often face a multitude of housing challenges. By definition, a significant number of R/ECAP households are financially burdened, which severely limits housing choice and mobility. The added possibility of racial or ethnic discrimination creates a situation where R/ECAP households are likely more susceptible to discriminatory practices in the housing market. Additionally, due to financial constraints and/or lack of knowledge (e.g., limited non-English information and materials), R/ECAP households encountering discrimination may believe they have little or no recourse, further exacerbating the situation.

It is very important to note that R/ECAPs are not areas of focus because of racial and ethnic concentrations alone. Many R/ECAPs, while not economically wealthy, are rich in culture, diversity, and community. R/ECAPs are meant to identify areas where residents may have historically faced discrimination and continue to be challenged by limited economic opportunity.

⁸ The Costs of Concentrated Poverty: Neighborhood Property Markets and the Dynamics of Decline.” In Nicolas P. Retsinas and Eric S. Belsky, eds., *Revisiting Rental Housing: Policies, Programs, and Priorities*. Washington, DC: Brookings Institution, 116–9.

R/ECAP trends. There are six R/ECAPs in the Central Texas region and all are located in Austin and Travis County. The maps below show the location of R/ECAPs in 2000 and 2016, as well as “edging” R/ECAPs, defined as those neighborhoods that meet 80 percent of the R/ECAP poverty threshold.

The location of the R/ECAPs have changed little since 2000, when they were largely located in east Austin. In contrast, the emerging R/ECAPs have migrated into the north and southeast.

Thirty-thousand residents and 2,300 families with children live in R/ECAPs. These residents are more likely to be of Hispanic descent and African American and slightly more likely to be families with children.

By definition, R/ECAPS are correlated with areas of very high poverty. Figures II-36 and II-37 show the proportion of families living in poverty in the region in 2000 and 2016, and nearly mirror the location of R/ECAPs and edge R/ECAPs.

A more important distinction is found in a comparison of the distribution of poverty against the distribution of people of color (Figures II-21 and II-22). Census tracts where the majority of residents are people of color comprise nearly all neighborhoods in the southeast portion of the region. This is also an area of moderate to high poverty; most neighborhoods exceed the region’s poverty rate. However, these neighborhoods are not exclusively high poverty areas and, as discussed below, have the highest rates of African American and Hispanic homeownership in the region. The economic opportunity in these areas should be nurtured and closely monitored for early risks of private disinvestment.

Figure II-36.
R/ECAPs and Edge R/ECAPs, Central Texas Region, 2000

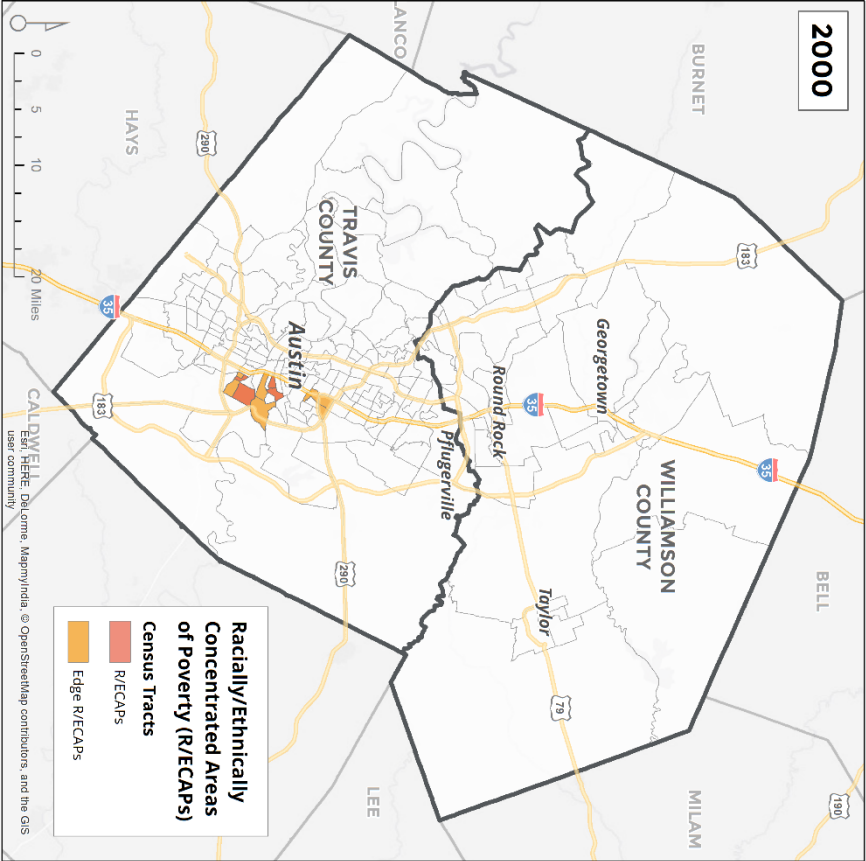


Figure II-37.
R/ECAPs and Edge R/ECAPs, Central Texas Region, 2016

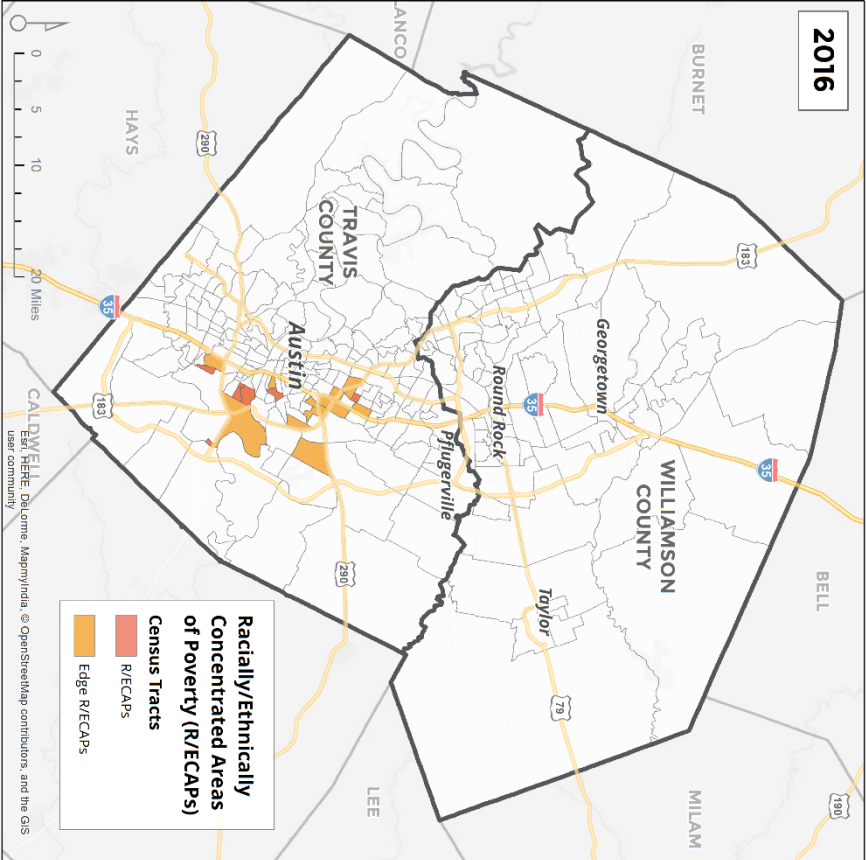
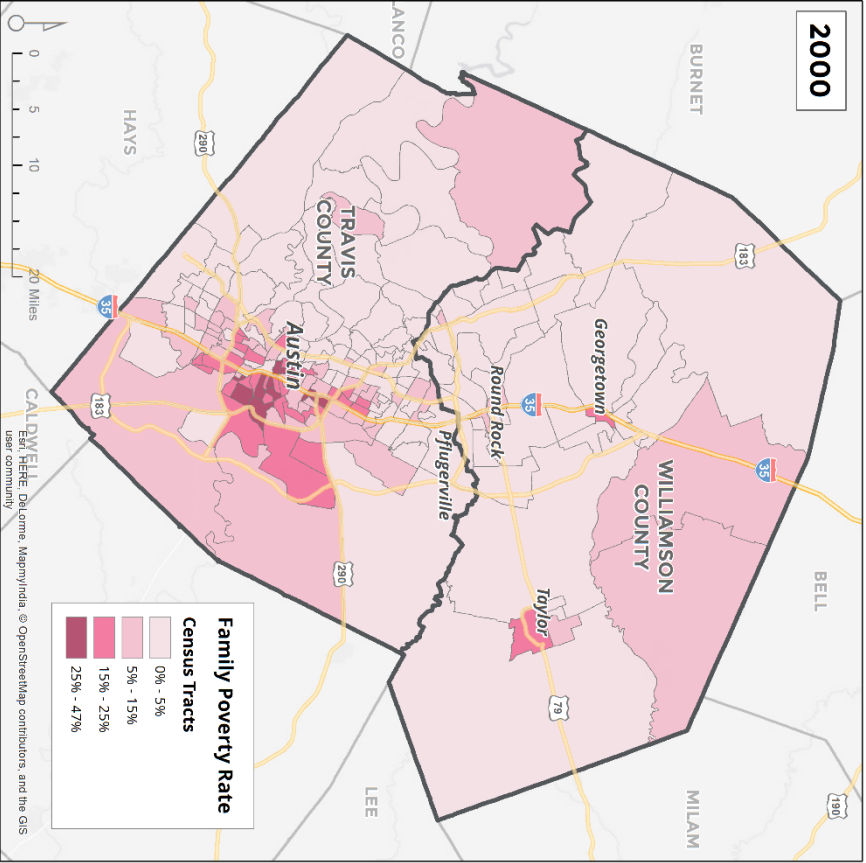
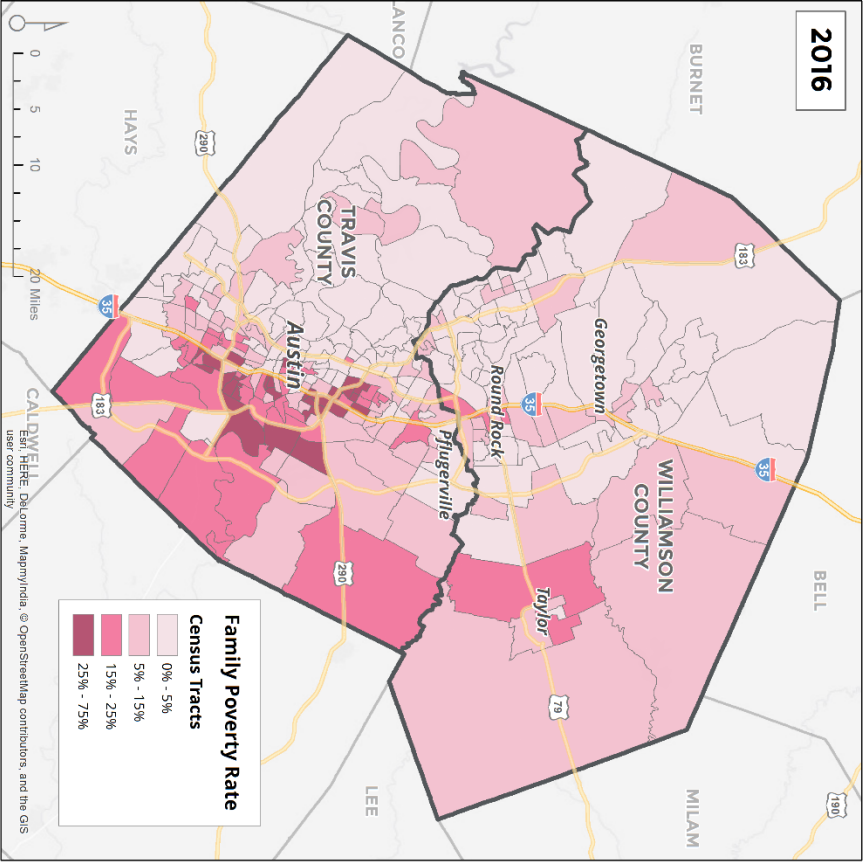


Figure II-38.
Percent Poverty by Census Tract, 2000



Source: 2000 US Census.

Figure II-39.
Percent Poverty by Census Tract, 2016

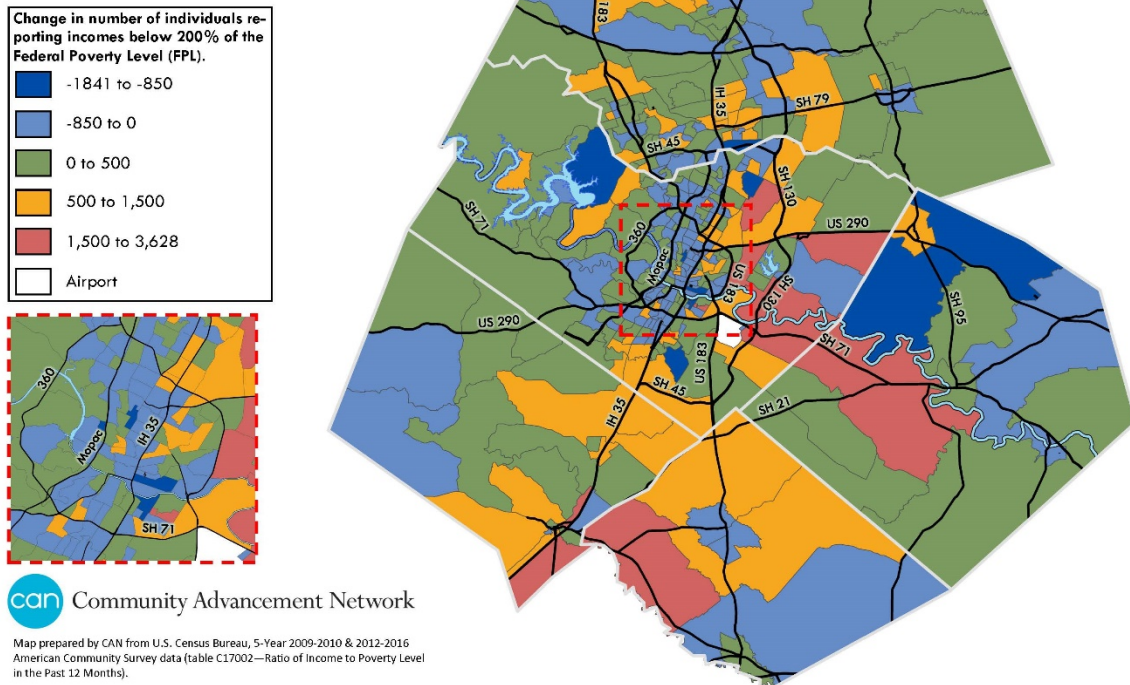


Source: American Community Survey, 2012-2016.

Figure II-40.

Low Income Population Change by Census Tract, 2010 - 2016

**Low-Income Population Change by
Census Tract from 2010 to 2016,
Austin MSA**



Source: Community Advancement Network, <http://canatx.org/dashboard/demographics/>.

Characteristics of R/ECAPs. HUD provides data on the characteristics of residents living in R/ECAPs; this Table 4 is shown for Austin and Travis County, where the R/ECAPs are found. According to HUD's data, residents living in the region's R/ECAPs are disproportionately likely to be African American (15% of R/ECAP residents v. 7% of residents overall), Hispanic (53% v. 32%), and families with children (58% v. 50%).

The composition of residents living in Austin's R/ECAPs has changed since 2000 to include fewer African Americans (18% in 2000 v. 15% in 2016) and more Hispanic residents (43% in 2000 v. 53% in 2016) and foreign born residents (11% in 2000 v. 20% in 2016).

The R/ECAP in Travis County is notable for its even larger proportion of African American residents (28% in R/ECAPs v. 9% overall).

Table 4 - R/ECAP Demographics, Austin

	(Austin, TX CDBG, HOME, ESG) Jurisdiction		(Austin-Round Rock, TX) Region	
R/ECAP Race/Ethnicity	#	%	#	%
Total Population in R/ECAPs	30,916	-	37,838	-
White, Non-Hispanic	6,801	22.00%	9,406	24.86%
Black, Non-Hispanic	4,673	15.12%	5,044	13.33%
Hispanic	16,486	53.33%	20,231	53.47%
Asian or Pacific Islander, Non-Hispanic	2,004	6.48%	2,122	5.61%
Native American, Non-Hispanic	40	0.13%	40	0.11%
Other, Non-Hispanic	113	0.37%	113	0.30%
R/ECAP Family Type				
Total Families in R/ECAPs	3,921	-	4,849	-
Families with children	2,269	57.87%	2,736	56.42%
R/ECAP National Origin				
Total Population in R/ECAPs	30,916	-	37,838	-
#1 country of origin	Mexico	3,345 10.82%	Mexico	3,726 9.85%
#2 country of origin	China*	984 3.18%	China*	1,001 2.65%
#3 country of origin	El Salvador	246 0.80%	Honduras	265 0.70%
#4 country of origin	Guatemala	229 0.74%	El Salvador	246 0.65%
#5 country of origin	Honduras	222 0.72%	Guatemala	229 0.61%
#6 country of origin	Belize	172 0.56%	India	224 0.59%
#7 country of origin	India	163 0.53%	Belize	172 0.45%
#8 country of origin	Iraq	143 0.46%	Iraq	143 0.38%
#9 country of origin	Nigeria	130 0.42%	Nigeria	130 0.34%
#10 country of origin	Nicaragua	123 0.40%	Nicaragua	123 0.33%

Note: *Excluding Hong Kong and Taiwan.

10 most populous groups at the jurisdiction level may not be the same as the 10 most populous at the Region level, and are thus labeled separately.

Source: Decennial Census; ACS. Refer to the Data Documentation for details (www.hudexchange.info/resource/4848/affh-data-documentation).

Table 4 - R/ECAP Demographics, Travis County, Including Incorporated Areas

	(Travis County, TX CDBG) Jurisdiction		(Austin-Round Rock, TX) Region	
R/ECAP Race/Ethnicity	#	%	#	%
Total Population in R/ECAPs	30,916	-	37,838	-
White, Non-Hispanic	6,801	22.00%	9,406	24.86%
Black, Non-Hispanic	4,673	15.12%	5,044	13.33%
Hispanic	16,486	53.33%	20,231	53.47%
Asian or Pacific Islander, Non-Hispanic	2,004	6.48%	2,122	5.61%
Native American, Non-Hispanic	40	0.13%	40	0.11%
Other, Non-Hispanic	113	0.37%	113	0.30%
R/ECAP Family Type				
Total Families in R/ECAPs	3,921	-	4,849	-
Families with children	2,269	57.87%	2,736	56.42%
R/ECAP National Origin				
Total Population in R/ECAPs	30,916	-	37,838	-
#1 country of origin	Mexico	3,345 10.82%	Mexico	3,726 9.85%
#2 country of origin	China*	984 3.18%	China*	1,001 2.65%
#3 country of origin	El Salvador	246 0.80%	Honduras	265 0.70%
#4 country of origin	Guatemala	229 0.74%	El Salvador	246 0.65%
#5 country of origin	Honduras	222 0.72%	Guatemala	229 0.61%
#6 country of origin	Belize	172 0.56%	India	224 0.59%
#7 country of origin	India	163 0.53%	Belize	172 0.45%
#8 country of origin	Iraq	143 0.46%	Iraq	143 0.38%
#9 country of origin	Nigeria	130 0.42%	Nigeria	130 0.34%
#10 country of origin	Nicaragua	123 0.40%	Nicaragua	123 0.33%

Note: *Excluding Hong Kong and Taiwan.

10 most populous groups at the jurisdiction level may not be the same as the 10 most populous at the Region level, and are thus labeled separately.

Source: Decennial Census; ACS. Refer to the Data Documentation for details (www.hudexchange.info/resource/4848/affh-data-documentation).

Table 4 - R/ECAP Demographics, Travis County, CDBG Service Areas Only

	(Travis County, TX CDBG) Jurisdiction		(Austin-Round Rock, TX) Region	
R/ECAP Race/Ethnicity	#	%	#	%
Total Population in R/ECAPs	2,281	-	81,150	-
White, Non-Hispanic	800	35.07%	18,401	22.68%
Black, Non-Hispanic	657	28.80%	11,408	14.06%
Hispanic	805	35.29%	47,716	58.80%
Asian or Pacific Islander, Non-Hispanic	6	0.26%	2,424	2.99%
Native American, Non-Hispanic	0	0.00%	143	0.18%
Other, Non-Hispanic	1	0.04%	116	0.14%
R/ECAP Family Type				
Total Families in R/ECAPs	97	-	13,970	-
Families with children	61	62.89%	8,031	57.49%
R/ECAP National Origin				
Total Population in R/ECAPs	2,281	-	81,150	-
#1 country of origin	Mexico	164 7.17%	Mexico	17,048 21.01%
#2 country of origin	Honduras	64 2.81%	Honduras	1,550 1.91%
#3 country of origin	Cuba	16 0.69%	Guatemala	655 0.81%
#4 country of origin	Canada	15 0.67%	Cuba	645 0.79%
#5 country of origin	El Salvador	12 0.51%	El Salvador	619 0.76%
#6 country of origin	Germany	1 0.03%	Vietnam	481 0.59%
#7 country of origin	Null	0 0.00%	China*	445 0.55%
#8 country of origin	Null	0 0.00%	India	320 0.39%
#9 country of origin	Null	0 0.00%	Pakistan	191 0.24%
#10 country of origin	Null	0 0.00%	Canada	149 0.18%

Note: *Excluding Hong Kong and Taiwan.

10 most populous groups at the jurisdiction level may not be the same as the 10 most populous at the Region level, and are thus labeled separately.

Source: Decennial Census; ACS. Refer to the Data Documentation for details (www.hudexchange.info/resource/4848/affh-data-documentation).

Linking Segregation to Housing Choice

One of the most negative outcomes of segregation and denial of ownership is limited accumulation of wealth. Homeownership is the largest asset of the majority of households in the U.S. and, for many low income households, provides an opportunity for future generations to attain homeownership.

Federal regulations preventing discrimination in lending have been in place for fewer than 50 years, yet actions limiting housing choice were in place much longer. As such, the impacts are still very present in homeownership differences.

As Figure II-41 shows, households in the region have vastly different homeownership rates depending on their race and ethnicity. African American households, and, less so, Hispanic households, have considerably lower rates of ownership than Non-Hispanic White and Asian residents.

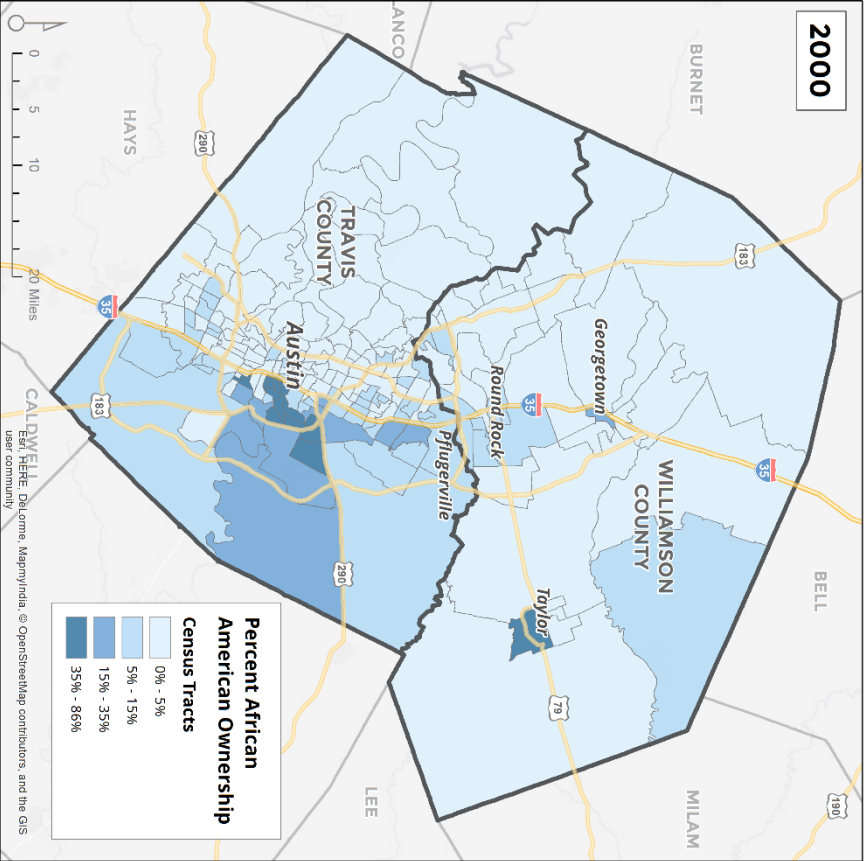
Figure II-41.
Homeownership and Change, 2000 to 2016

	2016				Black/White Difference	Hispanic/White Difference
	Black	Hispanic	White, Non- Hispanic	Asian		
Austin	32%	35%	52%	43%	-20%	-17%
Georgetown	55%	51%	77%	82%	-22%	-26%
Pflugerville	68%	73%	82%	90%	-13%	-9%
Round Rock	42%	50%	68%	70%	-26%	-19%
Taylor	47%	49%	67%	100%	-20%	-18%
Travis County	40%	41%	59%	50%	-19%	-18%
Williamson County	49%	57%	73%	69%	-25%	-17%

Source: American Community Survey, 2012-2016.

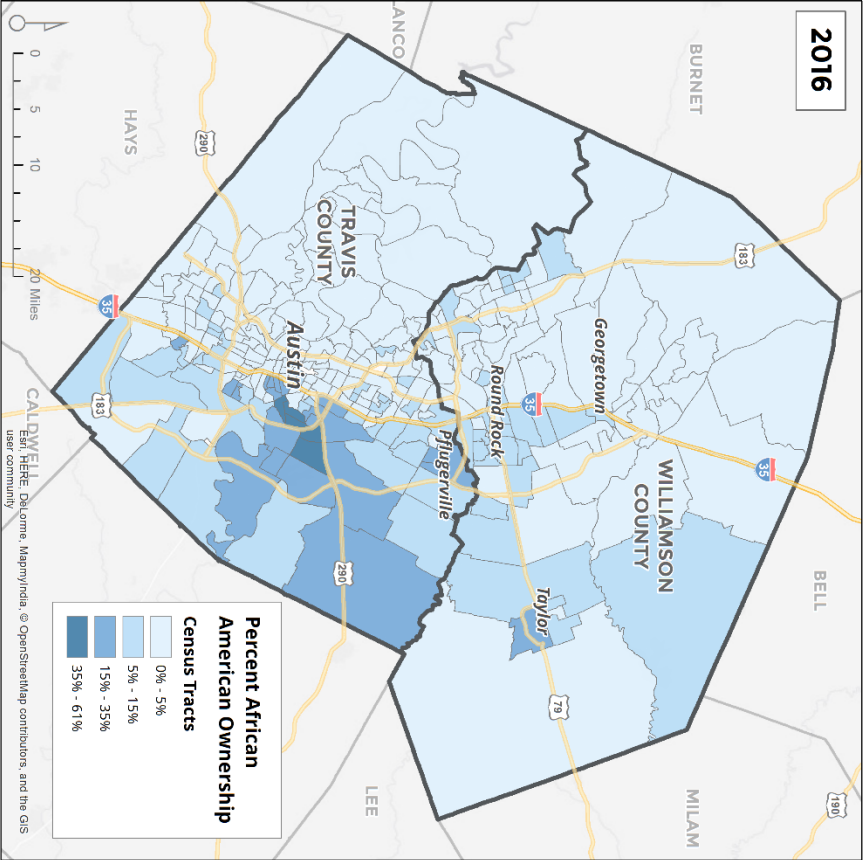
Figures II-42 through II-45 show where homeownership is the highest for African American and Hispanic households, as well as changes since 2000. African American ownership has changed only modestly 2000, except for growth east of Austin and in Pflugerville. In contrast, ownership has broadened geographically for Hispanic households throughout the eastern portions of both Travis and Williamson Counties, with the highest rates of ownership in south Travis County.

Figure II-42.
Percent African American Ownership, 2000



Source: 2000 US Census.

Figure II-43.
Percent African American Ownership, 2016



Source: American Community Survey, 2012-2016.

Figure II-44.
Percent Hispanic Ownership, 2000

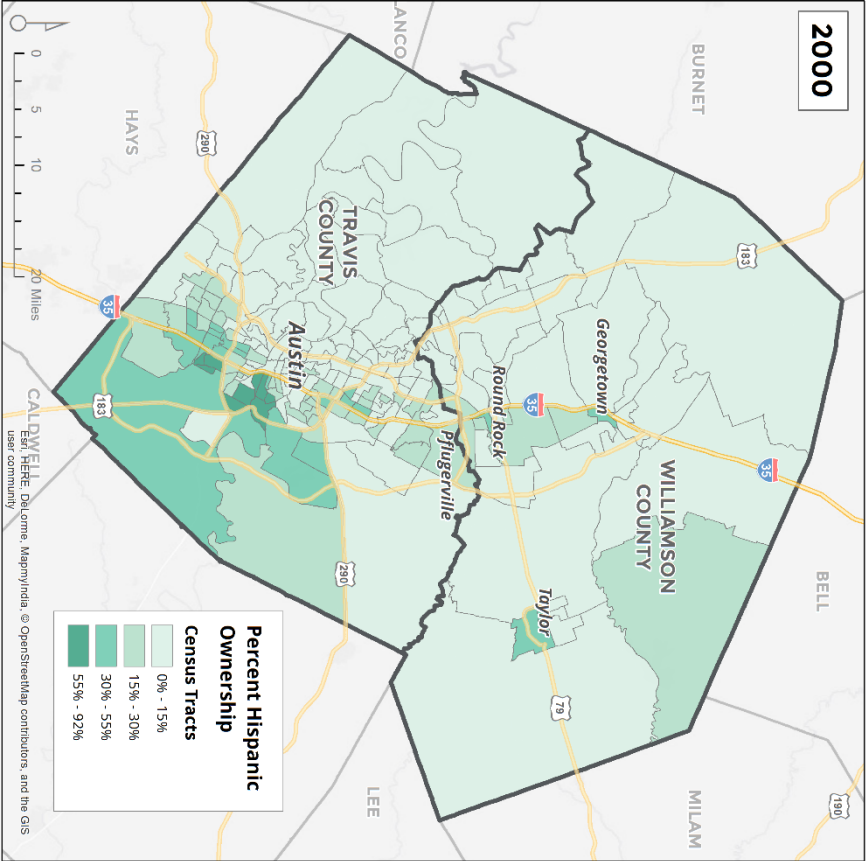
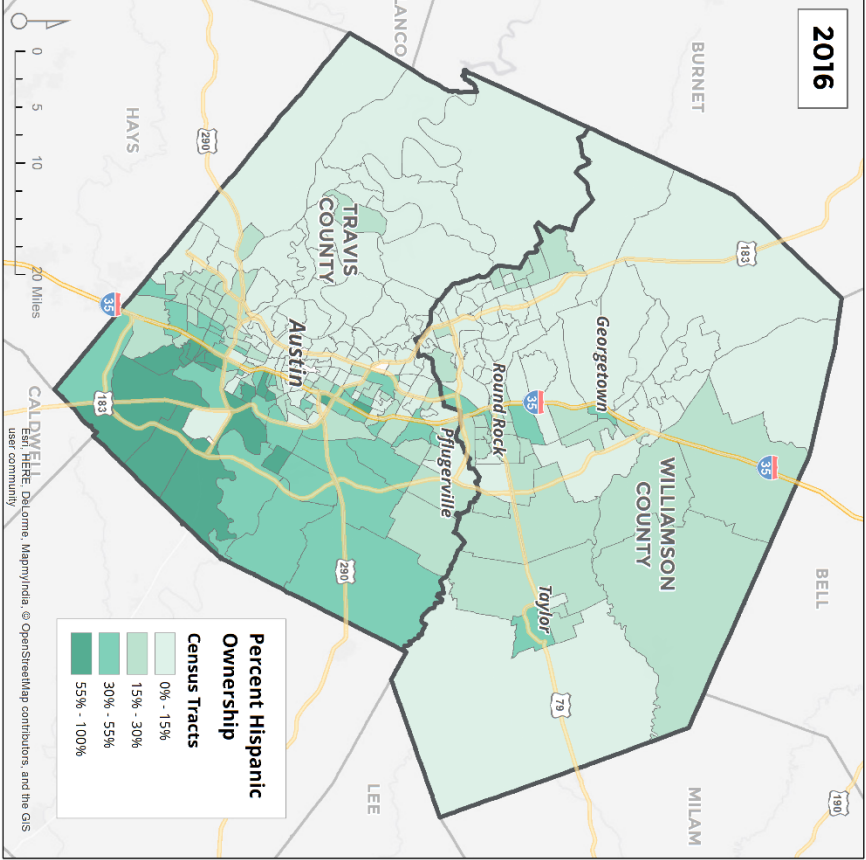


Figure II-45.
Percent Hispanic Ownership, 2016



HUD Tables not included in Main Body of Section

As part of the development of the Assessment of Fair Housing (AFH), HUD developed an online tool to provide communities with easily accessible data and maps to analyze in fair housing assessments. Relevant data tables and maps, which were used in this section, appear on the following pages.

Tables and maps are not available for all jurisdictions that are part of the Central Texas AI because HUD does not provide tables for non-entitlement cities or cities only represented through public housing authorities.

Table 1 – Demographics, Austin

	(Austin, TX CDBG, HOME, ESG) Jurisdiction		(Austin-Round Rock, TX) Region	
Race/Ethnicity	#	%	#	%
White, Non-Hispanic	443,808	48.89%	1,036,372	53.35%
Black, Non-Hispanic	65,631	7.23%	136,105	7.01%
Hispanic	312,822	34.46%	620,513	31.94%
Asian or Pacific Islander, Non-Hispanic	61,775	6.81%	102,444	5.27%
Native American, Non-Hispanic	1,515	0.17%	3,403	0.18%
Two or More Races, Non-Hispanic	20,777	2.29%	40,404	2.08%
Other, Non-Hispanic	1,451	0.16%	3,374	0.17%
National Origin				
#1 country of origin	Mexico	74,688 8.23%	Mexico	132,424 6.82%
#2 country of origin	India	13,932 1.53%	India	22,199 1.14%
#3 country of origin	China*	7,242 0.80%	Vietnam	12,315 0.63%
#4 country of origin	Vietnam	5,757 0.63%	China*	9,850 0.51%
#5 country of origin	Honduras	5,587 0.62%	Honduras	7,839 0.40%
#6 country of origin	El Salvador	3,755 0.41%	El Salvador	5,889 0.30%
#7 country of origin	Korea	3,687 0.41%	Canada	5,103 0.26%
#8 country of origin	Guatemala	3,206 0.35%	Korea	4,950 0.25%
#9 country of origin	Cuba	3,051 0.34%	Philippines	4,657 0.24%
#10 country of origin	Canada	2,733 0.30%	Cuba	4,405 0.23%
Limited English Proficiency (LEP) Language				
#1 LEP Language	Spanish	88,241 9.72%	Spanish	152,349 7.84%
#2 LEP Language	Chinese	4,453 0.49%	Vietnamese	7,583 0.39%
#3 LEP Language	Vietnamese	4,157 0.46%	Chinese	5,797 0.30%
#4 LEP Language	Korean	1,777 0.20%	Korean	2,391 0.12%
#5 LEP Language	Other Asian languages	1,378 0.15%	Other Asian languages	1,899 0.10%
#6 LEP Language	Hindi	1,056 0.12%	Urdu	1,547 0.08%
#7 LEP Language	Arabic	1,043 0.11%	Arabic	1,509 0.08%
#8 LEP Language	Urdu	877 0.10%	African languages	1,384 0.07%
#9 LEP Language	Persian	730 0.08%	French	1,337 0.07%
#10 LEP Language	African languages	674 0.07%	Hindi	1,271 0.07%
Disability Type				
Hearing difficulty		21,588 2.38%		52,018 2.68%
Vision difficulty		15,556 1.71%		32,324 1.66%
Cognitive difficulty		32,336 3.56%		68,918 3.55%
Ambulatory difficulty		36,552 4.03%		84,228 4.34%
Self-care difficulty		14,307 1.58%		32,883 1.69%
Independent living difficulty		24,781 2.73%		57,068 2.94%
Sex				
Male		458,374 50.49%		971,489 50.01%
Female		449,405 49.51%		971,126 49.99%
Age				
Under 18		194,262 21.40%		470,915 24.24%
18-64		641,598 70.68%		1,286,726 66.24%
65+		71,919 7.92%		184,974 9.52%
Family Type				
Families with children		90,493 48.58%		214,290 49.04%

Note: *Excluding Hong Kong and Taiwan.

All % represent a share of the total population within the jurisdiction or region, except family type, which is out of total families.

10 most populous places of birth and languages at the jurisdiction level may not be the same as the 10 most populous at the Region level, and are thus labeled separately.

Source: Decennial Census; ACS. Refer to the Data Documentation for details (www.hudexchange.info/resource/4848/affh-data-documentation).

Table 1 – Demographics, Pflugerville

	(Pflugerville City, TX CDBG) Jurisdiction		(Austin-Round Rock, TX) Region	
Race/Ethnicity	#	%	#	%
White, Non-Hispanic	24,894	44.68%	1,036,372	53.35%
Black, Non-Hispanic	8,946	16.06%	136,105	7.01%
Hispanic	15,551	27.91%	620,513	31.94%
Asian or Pacific Islander, Non-Hispanic	4,835	8.68%	102,444	5.27%
Native American, Non-Hispanic	194	0.35%	3,403	0.18%
Two or More Races, Non-Hispanic	1,185	2.13%	40,404	2.08%
Other, Non-Hispanic	107	0.19%	3,374	0.17%
National Origin				
#1 country of origin	Mexico	2,415 4.33%	Mexico	132,424 6.82%
#2 country of origin	Vietnam	1,858 3.34%	India	22,199 1.14%
#3 country of origin	India	493 0.88%	Vietnam	12,315 0.63%
#4 country of origin	Pakistan	312 0.56%	China*	9,850 0.51%
#5 country of origin	Nigeria	286 0.51%	Honduras	7,839 0.40%
#6 country of origin	Cuba	273 0.49%	El Salvador	5,889 0.30%
#7 country of origin	Philippines	200 0.36%	Canada	5,103 0.26%
#8 country of origin	China*	180 0.32%	Korea	4,950 0.25%
#9 country of origin	Ethiopia	164 0.29%	Philippines	4,657 0.24%
#10 country of origin	Other Western Asia	150 0.27%	Cuba	4,405 0.23%
Limited English Proficiency (LEP) Language				
#1 LEP Language	Spanish	3,445 6.18%	Spanish	152,349 7.84%
#2 LEP Language	Vietnamese	724 1.30%	Vietnamese	7,583 0.39%
#3 LEP Language	Urdu	164 0.29%	Chinese	5,797 0.30%
#4 LEP Language	Arabic	131 0.24%	Korean	2,391 0.12%
#5 LEP Language	African languages	94 0.17%	Other Asian languages	1,899 0.10%
#6 LEP Language	Chinese	62 0.11%	Urdu	1,547 0.08%
#7 LEP Language	Gujarati	42 0.08%	Arabic	1,509 0.08%
#8 LEP Language	Tagalog	40 0.07%	African languages	1,384 0.07%
#9 LEP Language	Korean	34 0.06%	French	1,337 0.07%
#10 LEP Language	Other Indic languages	29 0.05%	Hindi	1,271 0.07%
Disability Type				
Hearing difficulty		1,697 3.05%		52,018 2.68%
Vision difficulty		1,013 1.82%		32,324 1.66%
Cognitive difficulty		1,908 3.42%		68,918 3.55%
Ambulatory difficulty		2,354 4.23%		84,228 4.34%
Self-care difficulty		827 1.48%		32,883 1.69%
Independent living difficulty		1,262 2.27%		57,068 2.94%
Sex				
Male		26,321 47.24%		971,489 50.01%
Female		29,391 52.76%		971,126 49.99%
Age				
Under 18		15,391 27.63%		470,915 24.24%
18-64		35,943 64.52%		1,286,726 66.24%
65+		4,378 7.86%		184,974 9.52%
Family Type				
Families with children		7,146 50.16%		214,290 49.04%

Note: *Excluding Hong Kong and Taiwan.

All % represent a share of the total population within the jurisdiction or region, except family type, which is out of total families.

10 most populous places of birth and languages at the jurisdiction level may not be the same as the 10 most populous at the Region level, and are thus labeled separately.

Source: Decennial Census; ACS. Refer to the Data Documentation for details (www.hudexchange.info/resource/4848/affh-data-documentation).

Table 1 – Demographics, Round Rock

	(Round Rock, TX CDBG) Jurisdiction		(Austin-Round Rock, TX) Region	
Race/Ethnicity	#	%	#	%
White, Non-Hispanic	56,744	50.32%	1,036,372	53.35%
Black, Non-Hispanic	11,377	10.09%	136,105	7.01%
Hispanic	34,435	30.54%	620,513	31.94%
Asian or Pacific Islander, Non-Hispanic	7,119	6.31%	102,444	5.27%
Native American, Non-Hispanic	105	0.09%	3,403	0.18%
Two or More Races, Non-Hispanic	2,745	2.43%	40,404	2.08%
Other, Non-Hispanic	242	0.21%	3,374	0.17%
National Origin				
#1 country of origin	Mexico	6,544 5.80%	Mexico	132,424 6.82%
#2 country of origin	India	1,485 1.32%	India	22,199 1.14%
#3 country of origin	Vietnam	894 0.79%	Vietnam	12,315 0.63%
#4 country of origin	Philippines	486 0.43%	China*	9,850 0.51%
#5 country of origin	China*	412 0.37%	Honduras	7,839 0.40%
#6 country of origin	Pakistan	361 0.32%	El Salvador	5,889 0.30%
#7 country of origin	El Salvador	308 0.27%	Canada	5,103 0.26%
#8 country of origin	Cuba	241 0.21%	Korea	4,950 0.25%
#9 country of origin	Brazil	221 0.20%	Philippines	4,657 0.24%
#10 country of origin	Honduras	220 0.20%	Cuba	4,405 0.23%
Limited English Proficiency (LEP) Language				
#1 LEP Language	Spanish	7,118 6.31%	Spanish	152,349 7.84%
#2 LEP Language	Vietnamese	527 0.47%	Vietnamese	7,583 0.39%
#3 LEP Language	African languages	306 0.27%	Chinese	5,797 0.30%
#4 LEP Language	Chinese	193 0.17%	Korean	2,391 0.12%
#5 LEP Language	French	139 0.12%	Other Asian languages	1,899 0.10%
#6 LEP Language	Gujarati	132 0.12%	Urdu	1,547 0.08%
#7 LEP Language	Urdu	126 0.11%	Arabic	1,509 0.08%
#8 LEP Language	Other Asian languages	113 0.10%	African languages	1,384 0.07%
#9 LEP Language	Tagalog	100 0.09%	French	1,337 0.07%
#10 LEP Language	Persian	78 0.07%	Hindi	1,271 0.07%
Disability Type				
Hearing difficulty		2,653 2.35%		52,018 2.68%
Vision difficulty		1,896 1.68%		32,324 1.66%
Cognitive difficulty		4,378 3.88%		68,918 3.55%
Ambulatory difficulty		4,868 4.32%		84,228 4.34%
Self-care difficulty		2,452 2.17%		32,883 1.69%
Independent living difficulty		3,830 3.40%		57,068 2.94%
Sex				
Male		55,824 49.50%		971,489 50.01%
Female		56,943 50.50%		971,126 49.99%
Age				
Under 18		32,658 28.96%		470,915 24.24%
18-64		71,747 63.62%		1,286,726 66.24%
65+		8,362 7.42%		184,974 9.52%
Family Type				
Families with children		14,763 56.21%		214,290 49.04%

Note: *Excluding Hong Kong and Taiwan.

All % represent a share of the total population within the jurisdiction or region, except family type, which is out of total families.

10 most populous places of birth and languages at the jurisdiction level may not be the same as the 10 most populous at the Region level, and are thus labeled separately.

Source: Decennial Census; ACS. Refer to the Data Documentation for details (www.hudexchange.info/resource/4848/affh-data-documentation).

Table 1 – Demographics, Travis County, Including Incorporated Areas

	(Travis County, TX CDBG) Jurisdiction		(Austin-Round Rock, TX) Region	
Race/Ethnicity	#	%	#	%
White, Non-Hispanic	570,282	49.67%	1,036,372	53.35%
Black, Non-Hispanic	90,819	7.91%	136,105	7.01%
Hispanic	387,357	33.74%	620,513	31.94%
Asian or Pacific Islander, Non-Hispanic	71,051	6.19%	102,444	5.27%
Native American, Non-Hispanic	1,765	0.15%	3,403	0.18%
Two or More Races, Non-Hispanic	25,122	2.19%	40,404	2.08%
Other, Non-Hispanic	1,780	0.16%	3,374	0.17%
National Origin				
#1 country of origin	Mexico	93,373 8.13%	Mexico	132,424 6.82%
#2 country of origin	India	14,178 1.23%	India	22,199 1.14%
#3 country of origin	Vietnam	9,787 0.85%	Vietnam	12,315 0.63%
#4 country of origin	China*	7,444 0.65%	China*	9,850 0.51%
#5 country of origin	Honduras	6,146 0.54%	Honduras	7,839 0.40%
#6 country of origin	El Salvador	4,306 0.38%	El Salvador	5,889 0.30%
#7 country of origin	Cuba	3,649 0.32%	Canada	5,103 0.26%
#8 country of origin	Korea	3,598 0.31%	Korea	4,950 0.25%
#9 country of origin	Canada	3,587 0.31%	Philippines	4,657 0.24%
#10 country of origin	Guatemala	3,581 0.31%	Cuba	4,405 0.23%
Limited English Proficiency (LEP) Language				
#1 LEP Language	Spanish	109,030 9.50%	Spanish	152,349 7.84%
#2 LEP Language	Vietnamese	6,253 0.54%	Vietnamese	7,583 0.39%
#3 LEP Language	Chinese	4,150 0.36%	Chinese	5,797 0.30%
#4 LEP Language	Korean	1,575 0.14%	Korean	2,391 0.12%
#5 LEP Language	Arabic	1,346 0.12%	Other Asian languages	1,899 0.10%
#6 LEP Language	Other Asian languages	1,262 0.11%	Urdu	1,547 0.08%
#7 LEP Language	Urdu	1,023 0.09%	Arabic	1,509 0.08%
#8 LEP Language	Hindi	1,013 0.09%	African languages	1,384 0.07%
#9 LEP Language	African languages	933 0.08%	French	1,337 0.07%
#10 LEP Language	French	867 0.08%	Hindi	1,271 0.07%
Disability Type				
Hearing difficulty		27,371 2.38%		52,018 2.68%
Vision difficulty		19,070 1.66%		32,324 1.66%
Cognitive difficulty		39,899 3.47%		68,918 3.55%
Ambulatory difficulty		46,960 4.09%		84,228 4.34%
Self-care difficulty		18,187 1.58%		32,883 1.69%
Independent living difficulty		31,018 2.70%		57,068 2.94%
Sex				
Male		578,199 50.36%		971,489 50.01%
Female		569,977 49.64%		971,126 49.99%
Age				
Under 18		264,425 23.03%		470,915 24.24%
18-64		786,668 68.51%		1,286,726 66.24%
65+		97,083 8.46%		184,974 9.52%
Family Type				
Families with children		121,317 48.90%		214,290 49.04%

Note: *Excluding Hong Kong and Taiwan.

All % represent a share of the total population within the jurisdiction or region, except family type, which is out of total families.

10 most populous places of birth and languages at the jurisdiction level may not be the same as the 10 most populous at the Region level, and are thus labeled separately.

Source: Decennial Census; ACS. Refer to the Data Documentation for details (www.hudexchange.info/resource/4848/affh-data-documentation).

Table 1 – Demographics, Travis County, CDBG Service Areas Only

	(Travis County, TX CDBG) Jurisdiction		(Austin-Round Rock, TX) Region	
Race/Ethnicity	#	%	#	%
White, Non-Hispanic	90,475	53.85%	938,474	54.68%
Black, Non-Hispanic	15,133	9.01%	120,510	7.02%
Hispanic	49,299	29.34%	538,313	31.36%
Asian or Pacific Islander, Non-Hispanic	9,365	5.57%	82,040	4.78%
Native American, Non-Hispanic	443	0.26%	4,858	0.28%
Two or More Races, Non-Hispanic	3,004	1.79%	29,225	1.70%
Other, Non-Hispanic	301	0.18%	2,869	0.17%
National Origin				
#1 country of origin	Mexico	15,131 9.21%	Mexico	130,534 7.89%
#2 country of origin	Vietnam	1,958 1.19%	India	16,662 1.01%
#3 country of origin	India	1,301 0.79%	Vietnam	11,137 0.67%
#4 country of origin	Philippines	834 0.51%	China*	6,810 0.41%
#5 country of origin	China*	693 0.42%	Honduras	6,014 0.36%
#6 country of origin	Canada	676 0.41%	El Salvador	5,610 0.34%
#7 country of origin	Other UK	433 0.26%	Korea	5,330 0.32%
#8 country of origin	Korea	422 0.26%	Philippines	4,813 0.29%
#9 country of origin	Honduras	418 0.25%	Canada	4,613 0.28%
#10 country of origin	El Salvador	416 0.25%	Guatemala	4,131 0.25%
Limited English Proficiency (LEP) Language				
#1 LEP Language	Spanish	16,850 10.26%	Spanish	150,230 9.09%
#2 LEP Language	Vietnamese	1,786 1.09%	Vietnamese	7,546 0.46%
#3 LEP Language	Chinese	442 0.27%	Chinese	5,018 0.30%
#4 LEP Language	Arabic	287 0.17%	Korean	2,478 0.15%
#5 LEP Language	Tagalog	275 0.17%	Other Asian Language	1,605 0.10%
#6 LEP Language	Korean	167 0.10%	Arabic	1,289 0.08%
#7 LEP Language	Other Indic Language	137 0.08%	French	998 0.06%
#8 LEP Language	French Creole	129 0.08%	Urdu	988 0.06%
#9 LEP Language	Russian	103 0.06%	African	925 0.06%
#10 LEP Language	Other Asian Language	93 0.06%	Gujarati	907 0.05%
Disability Type				
Hearing difficulty		4,157 2.56%		45,013 2.75%
Vision difficulty		2,342 1.44%		29,474 1.80%
Cognitive difficulty		6,225 3.83%		62,942 3.84%
Ambulatory difficulty		7,283 4.48%		76,867 4.70%
Self-care difficulty		2,450 1.51%		29,277 1.79%
Independent living difficulty		4,445 2.73%		50,933 3.11%
Sex				
Male		84,452 50.26%		860,101 50.11%
Female		83,567 49.74%		856,188 49.89%
Age				
Under 18		49,389 29.39%		434,760 25.33%
18-64		107,481 63.97%		1,142,793 66.59%
65+		11,149 6.64%		138,736 8.08%
Family Type				
Families with children		23,352 55.23%		206,551 50.96%

Note: *Excluding Hong Kong and Taiwan.

All % represent a share of the total population within the jurisdiction or region, except family type, which is out of total families.

10 most populous places of birth and languages at the jurisdiction level may not be the same as the 10 most populous at the Region level, and are thus labeled separately.

Source: Decennial Census; ACS. Refer to the Data Documentation for details (www.hudexchange.info/resource/4848/affh-data-documentation).

Table 1 – Demographics, Williamson County, Including Incorporated Areas

	(Williamson County, TX CDBG) Jurisdiction		(Austin-Round Rock, TX) Region	
Race/Ethnicity	#	%	#	%
White, Non-Hispanic	302,516	61.66%	1,036,372	53.35%
Black, Non-Hispanic	29,923	6.10%	136,105	7.01%
Hispanic	116,943	23.84%	620,513	31.94%
Asian or Pacific Islander, Non-Hispanic	28,238	5.76%	102,444	5.27%
Native American, Non-Hispanic	924	0.19%	3,403	0.18%
Two or More Races, Non-Hispanic	11,171	2.28%	40,404	2.08%
Other, Non-Hispanic	904	0.18%	3,374	0.17%
National Origin				
#1 country of origin	Mexico	20,715 4.22%	Mexico	132,424 6.82%
#2 country of origin	India	7,589 1.55%	India	22,199 1.14%
#3 country of origin	Vietnam	2,294 0.62%	Vietnam	12,315 0.63%
#4 country of origin	China*	2,026 0.47%	China*	9,850 0.51%
#5 country of origin	Philippines	1,723 0.41%	Honduras	7,839 0.40%
#6 country of origin	Korea	1,280 0.35%	El Salvador	5,889 0.30%
#7 country of origin	Canada	1,058 0.26%	Canada	5,103 0.26%
#8 country of origin	Pakistan	977 0.22%	Korea	4,950 0.25%
#9 country of origin	El Salvador	955 0.20%	Philippines	4,657 0.24%
#10 country of origin	Germany	952 0.19%	Cuba	4,405 0.23%
Limited English Proficiency (LEP) Language				
#1 LEP Language	Spanish	21,810 4.45%	Spanish	152,349 7.84%
#2 LEP Language	Chinese	1,368 0.28%	Vietnamese	7,583 0.39%
#3 LEP Language	Vietnamese	1,208 0.25%	Chinese	5,797 0.30%
#4 LEP Language	Korean	772 0.16%	Korean	2,391 0.12%
#5 LEP Language	Other Asian languages	587 0.12%	Other Asian languages	1,899 0.10%
#6 LEP Language	Gujarati	516 0.11%	Urdu	1,547 0.08%
#7 LEP Language	Urdu	432 0.09%	Arabic	1,509 0.08%
#8 LEP Language	African languages	420 0.09%	African languages	1,384 0.07%
#9 LEP Language	Persian	407 0.08%	French	1,337 0.07%
#10 LEP Language	Hindi	258 0.05%	Hindi	1,271 0.07%
Disability Type				
Hearing difficulty		13,745 2.80%		52,018 2.68%
Vision difficulty		7,883 1.61%		32,324 1.66%
Cognitive difficulty		16,363 3.34%		68,918 3.55%
Ambulatory difficulty		21,219 4.32%		84,228 4.34%
Self-care difficulty		9,058 1.85%		32,883 1.69%
Independent living difficulty		15,242 3.11%		57,068 2.94%
Sex				
Male		241,189 49.16%		971,489 50.01%
Female		249,430 50.84%		971,126 49.99%
Age				
Under 18		132,887 27.09%		470,915 24.24%
18-64		304,268 62.02%		1,286,726 66.24%
65+		53,464 10.90%		184,974 9.52%
Family Type				
Families with children		61,073 51.12%		214,290 49.04%

Note: *Excluding Hong Kong and Taiwan.

All % represent a share of the total population within the jurisdiction or region, except family type, which is out of total families.

10 most populous places of birth and languages at the jurisdiction level may not be the same as the 10 most populous at the Region level, and are thus labeled separately.

Source: Decennial Census; ACS. Refer to the Data Documentation for details (www.hudexchange.info/resource/4848/affh-data-documentation).

Table 1 – Demographics, Williamson County, CDBG Service Areas Only

	(Williamson County, TX CDBG) Jurisdiction			(Austin-Round Rock, TX) Region		
Race/Ethnicity		#	%		#	%
White, Non-Hispanic		184,262	67.43%		938,474	54.68%
Black, Non-Hispanic		12,878	4.71%		120,510	7.02%
Hispanic		59,928	21.93%		538,313	31.36%
Asian or Pacific Islander, Non-Hispanic		10,131	3.71%		82,040	4.78%
Native American, Non-Hispanic		894	0.33%		4,858	0.28%
Two or More Races, Non-Hispanic		4,748	1.74%		29,225	1.70%
Other, Non-Hispanic		406	0.15%		2,869	0.17%
National Origin						
#1 country of origin	Mexico	11,055	4.13%	Mexico	130,534	7.89%
#2 country of origin	India	2,517	0.94%	India	16,662	1.01%
#3 country of origin	Philippines	1,150	0.43%	Vietnam	11,137	0.67%
#4 country of origin	Germany	789	0.29%	China*	6,810	0.41%
#5 country of origin	Korea	659	0.25%	Honduras	6,014	0.36%
#6 country of origin	Canada	649	0.24%	El Salvador	5,610	0.34%
#7 country of origin	China*	640	0.24%	Korea	5,330	0.32%
#8 country of origin	Vietnam	603	0.23%	Philippines	4,813	0.29%
#9 country of origin	Guatemala	529	0.20%	Canada	4,613	0.28%
#10 country of origin	Iran	464	0.17%	Guatemala	4,131	0.25%
Limited English Proficiency (LEP) Language						
#1 LEP Language	Spanish	11,787	4.40%	Spanish	150,230	9.09%
#2 LEP Language	Korean	447	0.17%	Vietnamese	7,546	0.46%
#3 LEP Language	Chinese	398	0.15%	Chinese	5,018	0.30%
#4 LEP Language	Gujarati	365	0.14%	Korean	2,478	0.15%
#5 LEP Language	Vietnamese	298	0.11%	Other Asian Language	1,605	0.10%
#6 LEP Language	Persian	265	0.10%	Arabic	1,289	0.08%
#7 LEP Language	Other Asian Language	171	0.06%	French	998	0.06%
#8 LEP Language	Tagalog	146	0.05%	Urdu	988	0.06%
#9 LEP Language	Other Indic Language	141	0.05%	African	925	0.06%
#10 LEP Language	German	131	0.05%	Gujarati	907	0.05%
Disability Type						
Hearing difficulty		8,027	3.02%		45,013	2.75%
Vision difficulty		4,720	1.78%		29,474	1.80%
Cognitive difficulty		9,689	3.65%		62,942	3.84%
Ambulatory difficulty		13,380	5.04%		76,867	4.70%
Self-care difficulty		5,092	1.92%		29,277	1.79%
Independent living difficulty		8,704	3.28%		50,933	3.11%
Sex						
Male		134,460	49.21%		860,101	50.11%
Female		138,787	50.79%		856,188	49.89%
Age						
Under 18		79,259	29.01%		434,760	25.33%
18-64		165,107	60.42%		1,142,793	66.59%
65+		28,881	10.57%		138,736	8.08%
Family Type						
Families with children		38,295	52.03%		206,551	50.96%

Note: *Excluding Hong Kong and Taiwan.

All % represent a share of the total population within the jurisdiction or region, except family type, which is out of total families.

10 most populous places of birth and languages at the jurisdiction level may not be the same as the 10 most populous at the Region level, and are thus labeled separately.

Source: Decennial Census; ACS. Refer to the Data Documentation for details (www.hudexchange.info/resource/4848/affh-data-documentation).

Table 2 - Demographic Trends, Austin

	(Austin, TX CDBG, HOME, ESG) Jurisdiction								(Austin-Round Rock, TX) Region							
Race/Ethnicity	1990 Trend		2000 Trend		2010 Trend		Current		1990 Trend		2000 Trend		2010 Trend		Current	
	#	%	#	%	#	%	#	%	#	%	#	%	#	%	#	%
White, Non-Hispanic	332,675	63.74%	381,503	54.54%	403,671	49.61%	443,808	48.89%	570,707	67.43%	758,214	60.66%	938,474	54.68%	1,036,372	53.35%
Black, Non-Hispanic	57,357	10.99%	67,134	9.60%	65,709	8.08%	65,631	7.23%	76,488	9.04%	101,419	8.11%	130,764	7.62%	136,105	7.01%
Hispanic	113,725	21.79%	206,475	29.52%	281,403	34.59%	312,822	34.46%	176,697	20.88%	327,660	26.22%	538,313	31.36%	620,513	31.94%
Asian or Pacific Islander, Non-Hispanic	15,336	2.94%	36,687	5.24%	56,090	6.89%	61,775	6.81%	18,079	2.14%	49,282	3.94%	93,678	5.46%	102,444	5.27%
Native American, Non-Hispanic	1,333	0.26%	4,199	0.60%	4,902	0.60%	1,515	0.17%	2,172	0.26%	7,920	0.63%	11,377	0.66%	3,403	0.18%
National Origin																
Foreign-born	43,134	8.26%	112,438	16.07%	149,668	18.40%	164,858	18.16%	56,152	6.64%	152,831	12.23%	235,592	13.73%	284,151	14.63%
LEP																
Limited English Proficiency	37,684	7.22%	86,620	12.38%	107,315	13.19%	108,513	11.95%	57,870	6.84%	121,850	9.75%	164,909	9.61%	185,607	9.55%
Sex																
Male	260,385	49.89%	357,002	51.03%	411,272	50.55%	458,374	50.49%	423,009	49.99%	634,043	50.73%	860,101	50.11%	971,489	50.01%
Female	261,540	50.11%	342,531	48.97%	402,353	49.45%	449,405	49.51%	423,226	50.01%	615,735	49.27%	856,188	49.89%	971,126	49.99%
Age																
Under 18	123,740	23.71%	165,447	23.65%	180,872	22.23%	194,262	21.40%	216,562	25.59%	325,908	26.08%	434,760	25.33%	470,915	24.24%
18-64	361,504	69.26%	487,826	69.74%	574,397	70.60%	641,598	70.68%	564,194	66.67%	833,878	66.72%	1,142,793	66.59%	1,286,726	66.24%
65+	36,681	7.03%	46,260	6.61%	58,356	7.17%	71,919	7.92%	65,480	7.74%	89,992	7.20%	138,736	8.08%	184,974	9.52%
Family Type																
Families with children	63,028	52.12%	61,373	50.08%	87,105	49.79%	90,493	48.58%	108,977	53.13%	104,775	51.60%	206,551	50.96%	214,290	49.04%

Note: All % represent a share of the total population within the jurisdiction or region for that year, except family type, which is out of total families.

Source: Decennial Census; ACS. Refer to the Data Documentation for details (www.hudexchange.info/resource/4848/aftf-data-documentation).

Table 2 - Demographic Trends, Pflugerville

	(Pflugerville City, TX CDBG) Jurisdiction						(Austin-Round Rock, TX) Region					
	1990 Trend	#	%	2000 Trend	#	%	2010 Trend	#	%	Current	#	%
Race/Ethnicity												
White, Non-Hispanic	5,656	78.08%		14,188	61.67%		21,591	44.41%		24,894	44.68%	
Black, Non-Hispanic	482	6.65%		2,750	11.95%		8,173	16.81%		8,946	16.06%	
Hispanic	958	13.22%		4,653	20.22%		14,225	29.26%		15,551	27.91%	
Asian or Pacific Islander, Non-Hispanic	109	1.50%		1,200	5.22%		4,268	8.78%		4,835	8.68%	
Native American, Non-Hispanic	16	0.22%		100	0.43%		264	0.54%		194	0.35%	
National Origin												
Foreign-born	184	2.52%		2,104	9.15%		6,674	13.73%		8,783	15.77%	
LEP												
Limited English Proficiency	271	3.71%		1,330	5.78%		3,752	7.72%		4,829	8.67%	
Sex												
Male	3,640	49.97%		11,522	50.09%		23,602	48.55%		26,321	47.24%	
Female	3,645	50.03%		11,479	49.91%		25,013	51.45%		29,391	52.76%	
Age												
Under 18	2,425	33.28%		7,925	34.46%		15,238	31.34%		15,391	27.63%	
18-64	4,629	63.53%		14,332	62.31%		30,848	63.45%		35,943	64.52%	
65+	232	3.18%		744	3.23%		2,529	5.20%		4,378	7.86%	
Family Type												
Families with children	1,313	63.55%		840	61.99%		7,444	59.18%		7,146	50.16%	
										108,977	53.13%	
										104,775	51.60%	
										206,551	50.96%	
										214,290	49.04%	

Note: All % represent a share of the total population within the jurisdiction or region for that year, except family type, which is out of total families.

Source: Decennial Census; ACS. Refer to the Data Documentation for details (www.hudexchange.info/resource/4848/affh-data-documentation).

Table 2 - Demographic Trends, Round Rock

	(Round Rock, TX CDBG) Jurisdiction										(Austin-Round Rock, TX) Region					
	1990 Trend		2000 Trend		2010 Trend		Current		1990 Trend		2000 Trend		2010 Trend		Current	
Race/Ethnicity	#	%	#	%	#	%	#	%	#	%	#	%	#	%	#	%
White, Non-Hispanic	24,322	75.28%	40,144	65.75%	54,018	54.29%	56,744	50.32%	570,707	67.43%	758,214	60.66%	938,474	54.68%	1,036,372	53.35%
Black, Non-Hispanic	1,615	5.00%	4,714	7.72%	9,947	10.00%	11,377	10.09%	76,488	9.04%	101,419	8.11%	130,764	7.62%	136,105	7.01%
Hispanic	5,842	18.08%	13,562	22.21%	28,718	28.86%	34,435	30.54%	176,697	20.88%	327,660	26.22%	538,313	31.36%	620,513	31.94%
Asian or Pacific Islander, Non-Hispanic	353	1.09%	2,075	3.40%	5,970	6.00%	7,119	6.31%	18,079	2.14%	49,282	3.94%	93,678	5.46%	102,444	5.27%
Native American, Non-Hispanic	101	0.31%	371	0.61%	604	0.61%	105	0.09%	2,172	0.26%	7,920	0.63%	11,377	0.66%	3,403	0.18%
National Origin																
Foreign-born	1,544	4.77%	5,658	9.26%	11,745	11.80%	15,377	13.64%	56,152	6.64%	152,831	12.23%	235,592	13.73%	284,151	14.63%
LEP																
Limited English Proficiency	1,557	4.81%	4,121	6.75%	7,018	7.05%	9,267	8.22%	57,870	6.84%	121,850	9.75%	164,909	9.61%	185,607	9.55%
Sex																
Male	16,131	49.80%	30,352	49.70%	48,899	49.15%	55,824	49.50%	423,009	49.99%	634,043	50.73%	860,101	50.11%	971,489	50.01%
Female	16,259	50.20%	30,721	50.30%	50,594	50.85%	56,943	50.50%	423,226	50.01%	615,735	49.27%	856,188	49.89%	971,126	49.99%
Age																
Under 18	10,646	32.87%	19,848	32.50%	30,719	30.88%	32,658	28.96%	216,562	25.59%	325,908	26.08%	434,760	25.33%	470,915	24.24%
18-64	20,195	62.35%	38,429	62.92%	63,157	63.48%	71,747	63.62%	564,194	66.67%	833,878	66.72%	1,142,793	66.59%	1,286,726	66.24%
65+	1,548	4.78%	2,796	4.58%	5,618	5.65%	8,362	7.42%	65,480	7.74%	89,992	7.20%	138,736	8.08%	184,974	9.52%
Family Type																
Families with children	5,591	64.65%	7,640	61.83%	14,892	58.26%	14,763	56.21%	108,977	53.13%	104,775	51.60%	206,551	50.96%	214,290	49.04%

Note: All % represent a share of the total population within the jurisdiction or region for that year, except family type, which is out of total families.

Source: Decennial Census; ACS. Refer to the Data Documentation for details (www.hudexchange.info/resource/4848/affh-data-documentation).

Table 2 - Demographic Trends, Travis County, Including Incorporated Areas

	(Travis County, TX CDBG) Jurisdiction						(Austin-Round Rock, TX) Region					
Race/Ethnicity	1990 Trend #	%	2000 Trend #	%	2010 Trend #	Current #	1990 Trend #	%	2000 Trend #	2010 Trend #	Current #	%
White, Non-Hispanic	46,055	77.30%	63,974	65.95%	90,475	53.85%	570,282	49.67%	570,707	67.43%	758,214	60.66%
Black, Non-Hispanic	3,923	6.58%	7,969	8.22%	16,221	9.65%	90,819	7.91%	76,488	9.04%	101,419	8.11%
Hispanic	8,209	13.78%	19,762	20.37%	49,299	29.34%	387,357	33.74%	176,697	20.88%	327,660	26.22%
Asian or Pacific Islander, Non-Hispanic	1,081	1.81%	4,284	4.42%	10,541	6.27%	71,051	6.19%	18,079	2.14%	49,282	3.94%
Native American, Non-Hispanic	166	0.28%	621	0.64%	1,104	0.66%	1,765	0.15%	2,172	0.26%	7,920	0.63%
National Origin												
Foreign-born	2,947	4.96%	9,675	9.98%	21,832	12.99%	201,148	17.52%	56,152	6.64%	152,831	12.23%
LEP												
Limited English Proficiency	2,499	4.21%	7,102	7.33%	13,726	8.17%	132,708	11.56%	57,870	6.84%	121,850	9.75%
Sex												
Male	30,542	51.43%	49,749	51.31%	84,452	50.26%	578,199	50.36%	423,009	49.99%	634,043	50.73%
Female	28,842	48.57%	47,200	48.69%	83,567	49.74%	569,977	49.64%	423,226	50.01%	615,735	49.27%
Age												
Under 18	16,579	27.92%	28,158	29.04%	49,389	29.39%	264,425	23.03%	216,562	25.59%	325,908	26.08%
18-64	39,128	65.89%	63,392	65.39%	107,481	63.97%	786,668	68.51%	564,194	66.67%	833,878	66.72%
65+	3,677	6.19%	5,399	5.57%	11,149	6.64%	97,083	8.46%	65,480	7.74%	89,992	7.20%
Family Type												
Families with children	8,691	54.50%	8,034	53.78%	23,352	55.23%	121,317	48.90%	108,977	53.13%	104,775	51.60%

Note: All % represent a share of the total population within the jurisdiction or region for that year, except family type, which is out of total families.

Source: Decennial Census; ACS. Refer to the Data Documentation for details (www.hudexchange.info/resource/4848/affh-data-documentation).

Table 2 - Demographic Trends, Travis County, CDBG Service Areas Only

	(Travis County, TX CDBG) Jurisdiction										(Austin-Round Rock, TX) Region					
	1990 Trend		2000 Trend		2010 Trend		Current		1990 Trend		2000 Trend		2010 Trend		Current	
Race/Ethnicity	#	%	#	%	#	%	#	%	#	%	#	%	#	%	#	%
White, Non-Hispanic	46,055	77.30%	63,974	65.95%	90,475	53.85%	90,475	53.85%	570,707	67.43%	758,214	60.66%	938,474	54.68%	938,474	54.68%
Black, Non-Hispanic	3,923	6.58%	7,969	8.22%	16,221	9.65%	15,133	9.01%	76,488	9.04%	101,419	8.11%	130,764	7.62%	120,510	7.02%
Hispanic	8,209	13.78%	19,762	20.37%	49,299	29.34%	49,299	29.34%	176,697	20.88%	327,660	26.22%	538,313	31.36%	538,313	31.36%
Asian or Pacific Islander, Non-Hispanic	1,081	1.81%	4,284	4.42%	10,541	6.27%	9,365	5.57%	18,079	2.14%	49,282	3.94%	93,678	5.46%	82,040	4.78%
Native American, Non-Hispanic	166	0.28%	621	0.64%	1,104	0.66%	443	0.26%	2,172	0.26%	7,920	0.63%	11,377	0.66%	4,858	0.28%
National Origin																
Foreign-born	2,947	4.96%	9,675	9.98%	21,832	12.99%	28,048	16.69%	56,152	6.64%	152,831	12.23%	235,592	13.73%	260,028	15.15%
LEP																
Limited English Proficiency	2,499	4.21%	7,102	7.33%	13,726	8.17%	18,742	11.15%	57,870	6.84%	121,850	9.75%	164,909	9.61%	180,430	10.51%
Sex																
Male	30,542	51.43%	49,749	51.31%	84,452	50.26%	84,452	50.26%	423,009	49.99%	634,043	50.73%	860,101	50.11%	860,101	50.11%
Female	28,842	48.57%	47,200	48.69%	83,567	49.74%	83,567	49.74%	423,226	50.01%	615,735	49.27%	856,188	49.89%	856,188	49.89%
Age																
Under 18	16,579	27.92%	28,158	29.04%	49,389	29.39%	49,389	29.39%	216,562	25.59%	325,908	26.08%	434,760	25.33%	434,760	25.33%
18-64	39,128	65.89%	63,392	65.39%	107,481	63.97%	107,481	63.97%	564,194	66.67%	833,878	66.72%	1,142,793	66.59%	1,142,793	66.59%
65+	3,677	6.19%	5,399	5.57%	11,149	6.64%	11,149	6.64%	65,480	7.74%	89,992	7.20%	138,736	8.08%	138,736	8.08%
Family Type																
Families with children	8,691	54.50%	8,034	53.78%	23,352	55.23%	23,352	55.23%	108,977	53.13%	104,775	51.60%	206,551	50.96%	206,551	50.96%

Note: All % represent a share of the total population within the jurisdiction or region for that year, except family type, which is out of total families.

Source: Decennial Census; ACS. Refer to the Data Documentation for details (www.hudexchange.info/resource/4848/affh-data-documentation).

Table 2 - Demographic Trends, Williamson County, Including Incorporated Areas

	(Williamson County, TX CDBG) Jurisdiction										(Austin-Round Rock, TX) Region				
Race/Ethnicity	1990 Trend		2000 Trend		2010 Trend		Current		1990 Trend		2000 Trend		2010 Trend		Current
	#	%	#	%	#	%	#	%	#	%	#	%	#	%	#
White, Non-Hispanic	63,709	79.63%	115,899	76.43%	184,262	67.43%	302,516	61.66%	570,707	67.43%	758,214	60.66%	938,474	54.68%	1,036,372
Black, Non-Hispanic	3,730	4.66%	6,660	4.39%	14,565	5.33%	29,923	6.10%	76,488	9.04%	101,419	8.11%	130,764	7.62%	136,105
Hispanic	11,673	14.59%	24,621	16.24%	59,928	21.93%	116,943	23.84%	176,697	20.88%	327,660	26.22%	538,313	31.36%	620,513
Asian or Pacific Islander, Non-Hispanic	479	0.60%	3,053	2.01%	11,963	4.38%	28,238	5.76%	18,079	2.14%	49,282	3.94%	93,678	5.46%	102,444
Native American, Non-Hispanic	192	0.24%	944	0.62%	2,016	0.74%	924	0.19%	2,172	0.26%	7,920	0.63%	11,377	0.66%	3,403
National Origin															
Foreign-born	2,615	3.27%	9,418	6.21%	23,009	8.42%	56,489	11.51%	56,152	6.64%	152,831	12.23%	235,592	13.73%	284,151
LEP															
Limited English Proficiency	3,917	4.91%	7,305	4.82%	14,087	5.16%	29,847	6.08%	57,870	6.84%	121,850	9.75%	164,909	9.61%	185,607
Sex															
Male	39,406	49.34%	75,537	49.83%	134,460	49.21%	241,189	49.16%	423,009	49.99%	634,043	50.73%	860,101	50.11%	971,489
Female	40,453	50.66%	76,056	50.17%	138,787	50.79%	249,430	50.84%	423,226	50.01%	615,735	49.27%	856,188	49.89%	971,126
Age															
Under 18	24,127	30.21%	46,080	30.40%	79,259	29.01%	132,887	27.09%	216,562	25.59%	325,908	26.08%	434,760	25.33%	470,915
18-64	47,571	59.57%	92,120	60.77%	165,107	60.42%	304,268	62.02%	564,194	66.67%	833,878	66.72%	1,142,793	66.59%	1,286,726
65+	8,161	10.22%	13,392	8.83%	28,881	10.57%	53,464	10.90%	65,480	7.74%	89,992	7.20%	138,736	8.08%	184,974
Family Type															
Families with children	12,066	55.47%	12,598	55.40%	38,295	52.03%	61,073	51.12%	108,977	53.13%	104,775	51.60%	206,551	50.96%	214,290

Note: All % represent a share of the total population within the jurisdiction or region for that year, except family type, which is out of total families.

Source: Decennial Census; ACS. Refer to the Data Documentation for details (www.hudexchange.info/resource/4848/affh-data-documentation).

Table 2 - Demographic Trends, Williamson County, CDBG Service Areas Only

	(Williamson County, TX CDBG) Jurisdiction										(Austin-Round Rock, TX) Region					
Race/Ethnicity	1990 Trend		2000 Trend		2010 Trend		Current		1990 Trend		2000 Trend		2010 Trend		Current	
	#	%	#	%	#	%	#	%	#	%	#	%	#	%	#	%
White, Non-Hispanic	63,709	79.63%	115,899	76.43%	184,262	67.43%	184,262	67.43%	570,707	67.43%	758,214	60.66%	938,474	54.68%	938,474	54.68%
Black, Non-Hispanic	3,730	4.66%	6,660	4.39%	14,565	5.33%	12,878	4.71%	76,488	9.04%	101,419	8.11%	130,764	7.62%	120,510	7.02%
Hispanic	11,673	14.59%	24,621	16.24%	59,928	21.93%	59,928	21.93%	176,697	20.88%	327,660	26.22%	538,313	31.36%	538,313	31.36%
Asian or Pacific Islander, Non-Hispanic	479	0.60%	3,053	2.01%	11,963	4.38%	10,131	3.71%	18,079	2.14%	49,282	3.94%	93,678	5.46%	82,040	4.78%
Native American, Non-Hispanic	192	0.24%	944	0.62%	2,016	0.74%	894	0.33%	2,172	0.26%	7,920	0.63%	11,377	0.66%	4,858	0.28%
National Origin																
Foreign-born	2,615	3.27%	9,418	6.21%	23,009	8.42%	26,966	9.87%	56,152	6.64%	152,831	12.23%	235,592	13.73%	260,028	15.15%
LEP																
Limited English Proficiency	3,917	4.91%	7,305	4.82%	14,087	5.16%	15,079	5.52%	57,870	6.84%	121,850	9.75%	164,909	9.61%	180,430	10.51%
Sex																
Male	39,406	49.34%	75,537	49.83%	134,460	49.21%	134,460	49.21%	423,009	49.99%	634,043	50.73%	860,101	50.11%	860,101	50.11%
Female	40,453	50.66%	76,056	50.17%	138,787	50.79%	138,787	50.79%	423,226	50.01%	615,735	49.27%	856,188	49.89%	856,188	49.89%
Age																
Under 18	24,127	30.21%	46,080	30.40%	79,259	29.01%	79,259	29.01%	216,562	25.59%	325,908	26.08%	434,760	25.33%	434,760	25.33%
18-64	47,571	59.57%	92,120	60.77%	165,107	60.42%	165,107	60.42%	564,194	66.67%	833,878	66.72%	1,142,793	66.59%	1,142,793	66.59%
65+	8,161	10.22%	13,392	8.83%	28,881	10.57%	28,881	10.57%	65,480	7.74%	89,992	7.20%	138,736	8.08%	138,736	8.08%
Family Type																
Families with children	12,066	55.47%	12,598	55.40%	38,295	52.03%	38,295	52.03%	108,977	53.13%	104,775	51.60%	206,551	50.96%	206,551	50.96%

Note: All % represent a share of the total population within the jurisdiction or region for that year, except family type, which is out of total families.

Source: Decennial Census; ACS. Refer to the Data Documentation for details (www.hudexchange.info/resource/4848/affh-data-documentation).

HUD maps. The maps on the following pages, from HUD’s mapping tool created for fair housing studies, provide a more detailed view of where residents live by race, ethnicity, foreign born status, and LEP status.

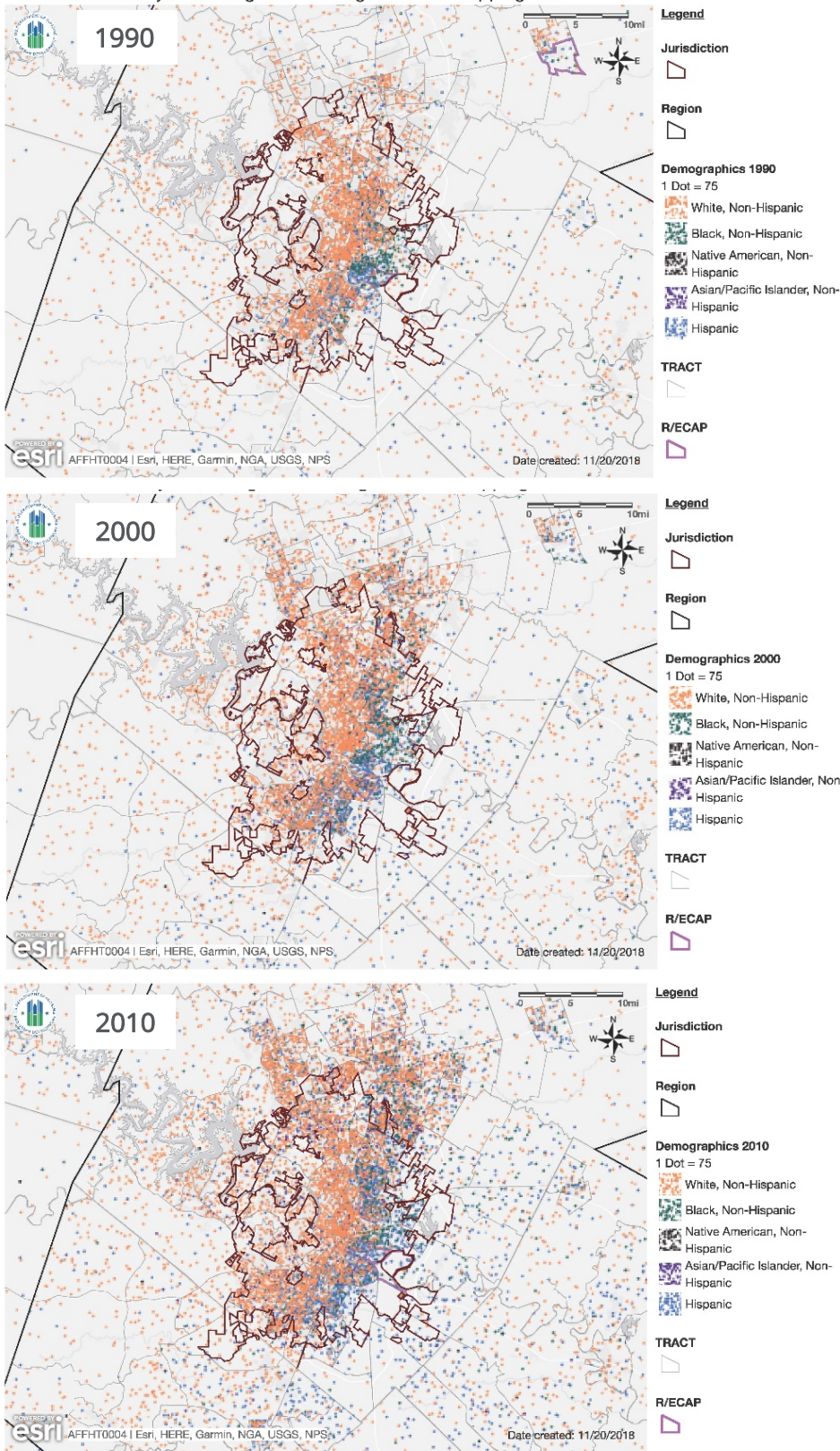
Maps are shown for each jurisdiction (except Georgetown and Taylor, for which they were unavailable) and include:

- Changes in racial and ethnic settlement patterns 1990 to 2000 to 2010;
- Location of foreign-born residents (a proxy for national origin in the Fair Housing Act); and
- Location of Limited English Proficiency (LEP) residents.

The maps also show a correlation between foreign-born residents of Hispanic origin and LEP residents.

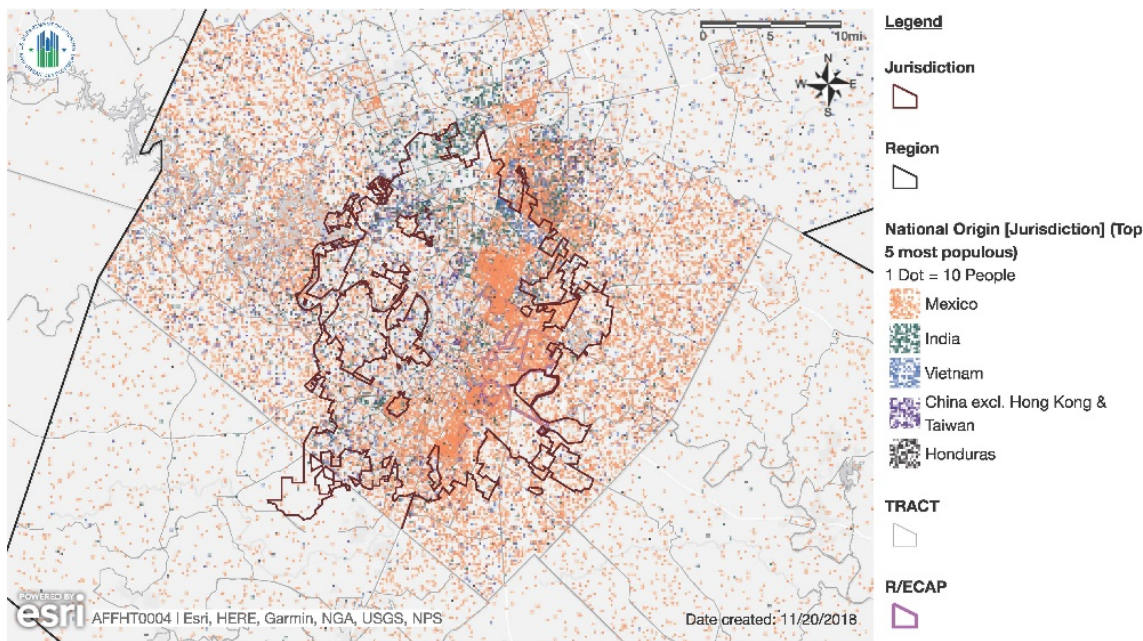
It is important to note that the data in the maps do not capture very recent growth trends and, as such, do not show the implications of recent growth, loss of affordability, and displacement of residents.

Race/Ethnicity Trends, 1990, 2000, and 2010, Austin



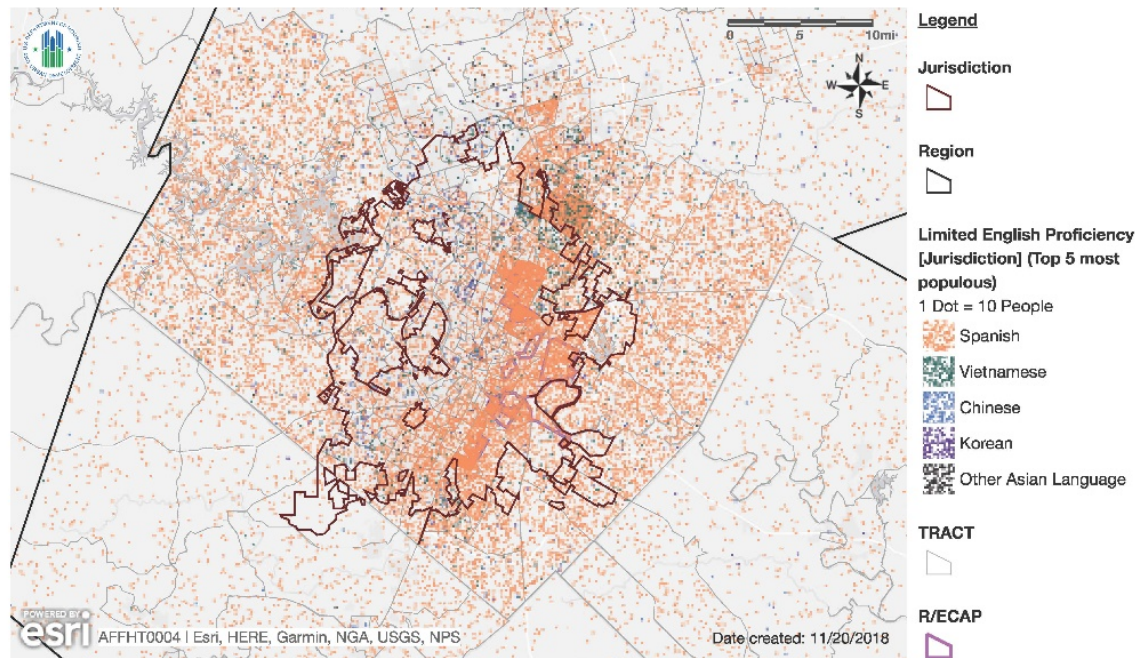
Source: HUD AFFH Data and Mapping Tool, version 4.

National Origin, 2010, Austin



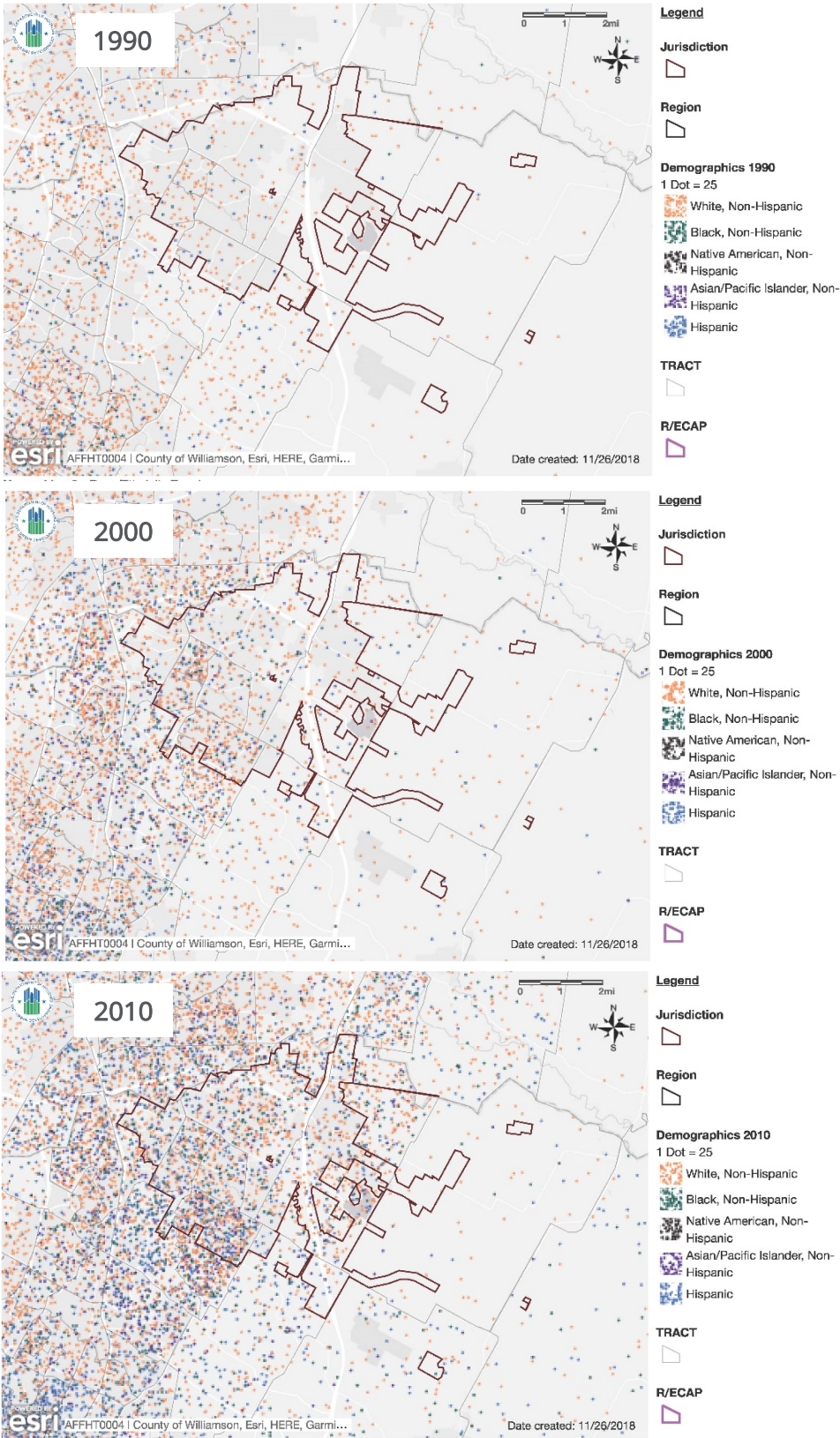
Source: HUD AFFH Data and Mapping Tool, version 4.

Limited English Proficiency (LEP), 2010, Austin



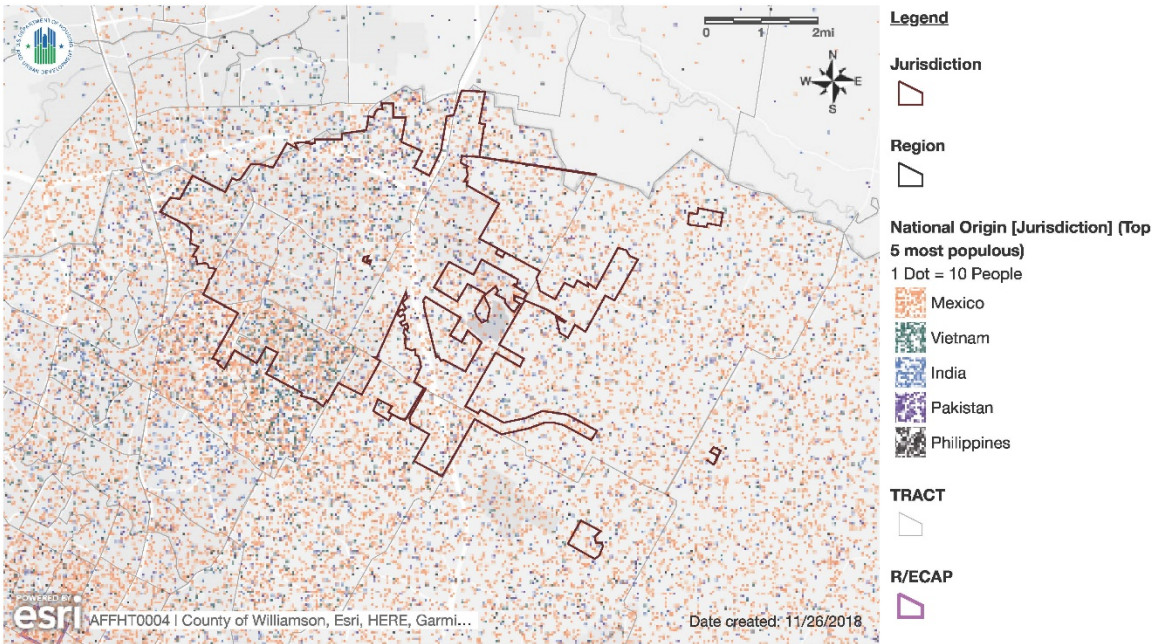
Source: HUD AFFH Data and Mapping Tool, version 4.

Race/Ethnicity Trends, 1990, 2000, and 2010, Pflugerville



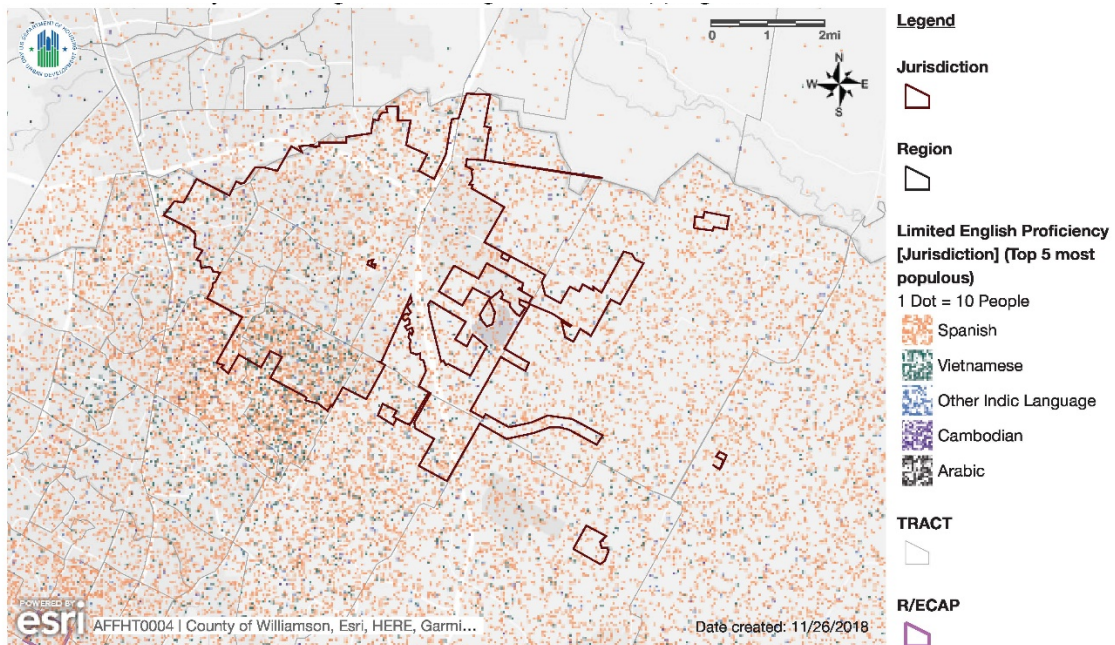
Source: HUD AFFH Data and Mapping Tool, version 4.

National Origin, 2010, Pflugerville



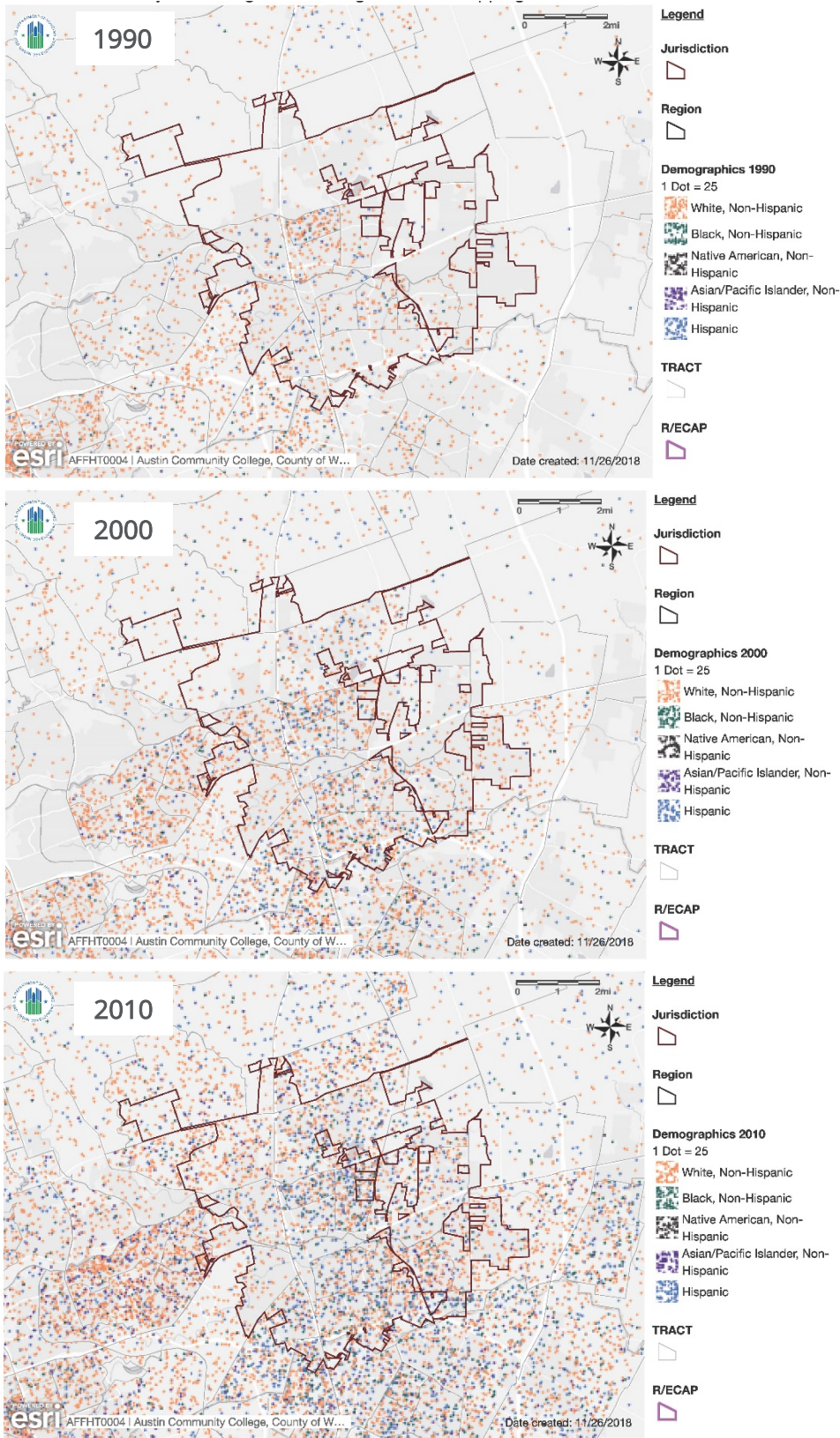
Source: HUD AFFH Data and Mapping Tool, version 4.

Limited English Proficiency (LEP), 2010, Pflugerville



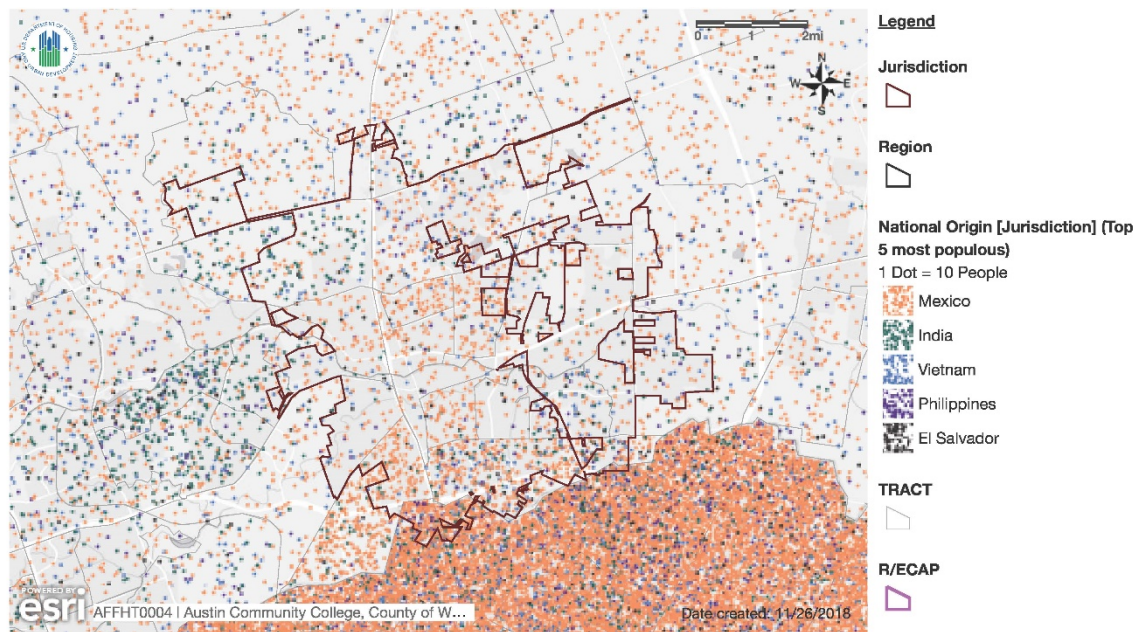
Source: HUD AFFH Data and Mapping Tool, version 4.

Race/Ethnicity Trends, 1990, 2000, and 2010, Round Rock



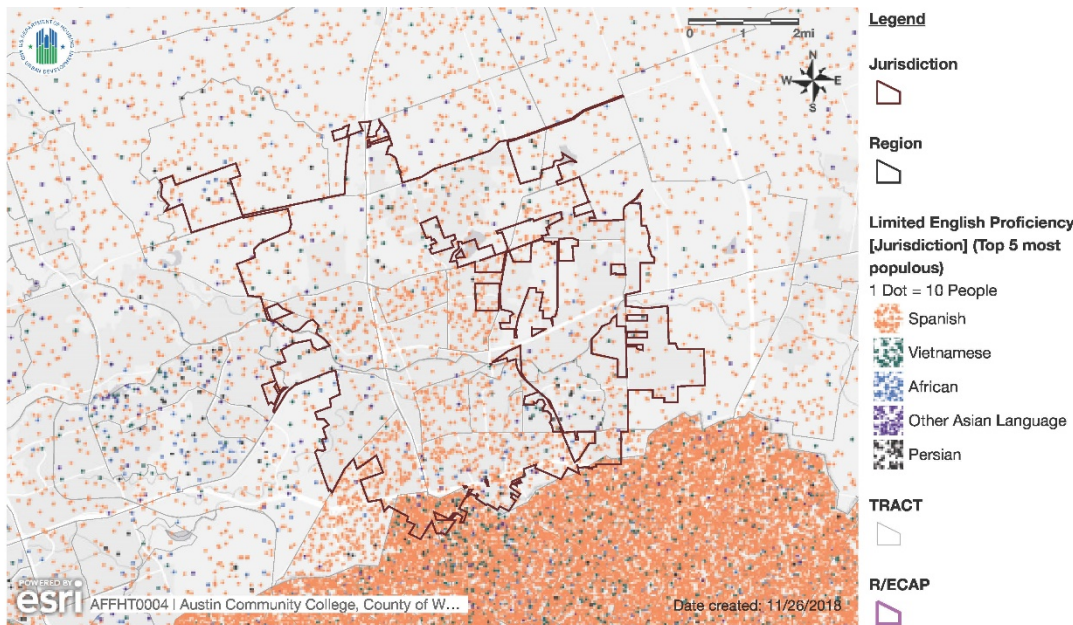
Source: HUD AFFH Data and Mapping Tool, version 4.

National Origin, 2010, Round Rock



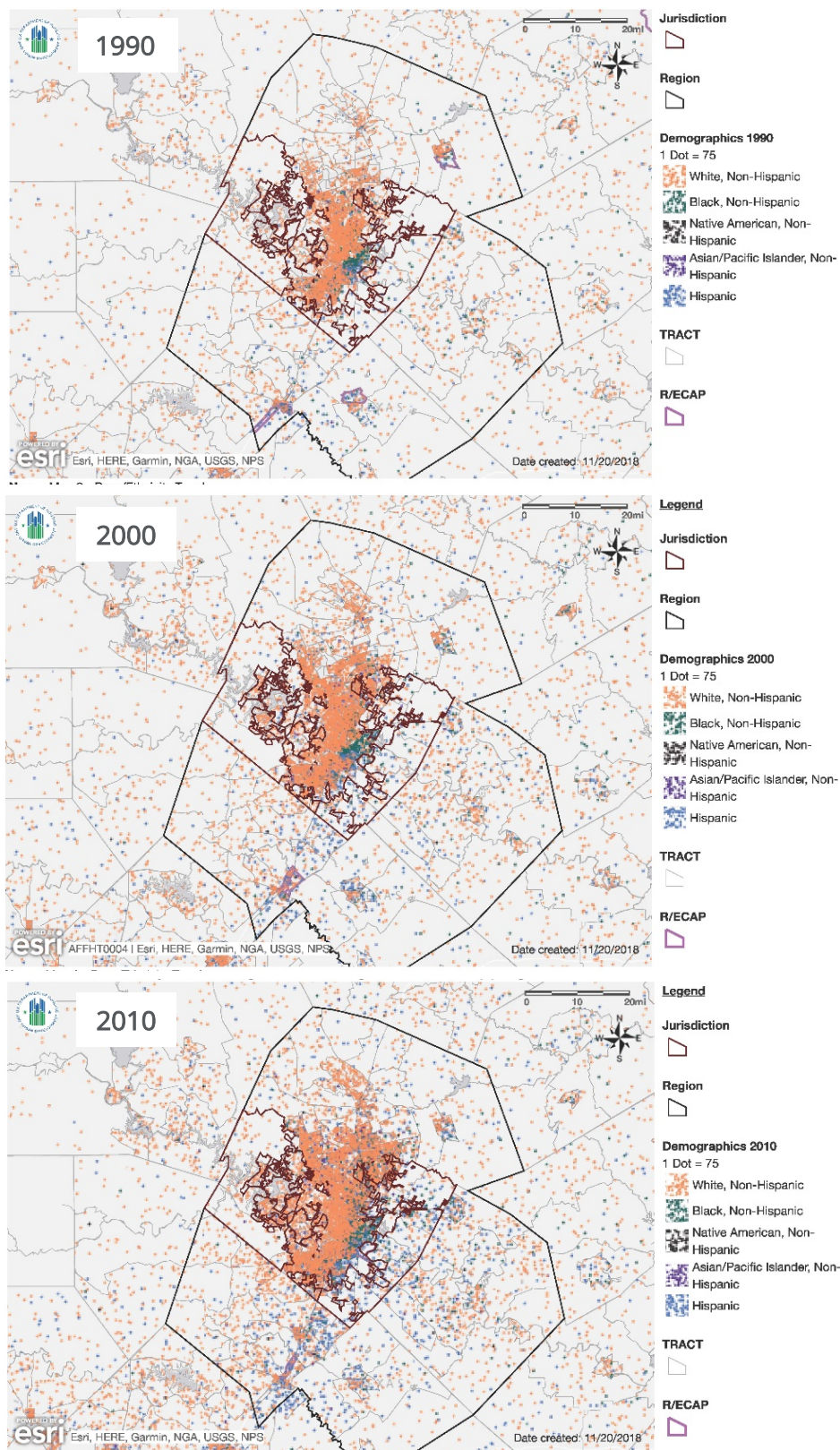
Source: HUD AFFH Data and Mapping Tool, version 4.

Limited English Proficiency (LEP), 2010, Round Rock



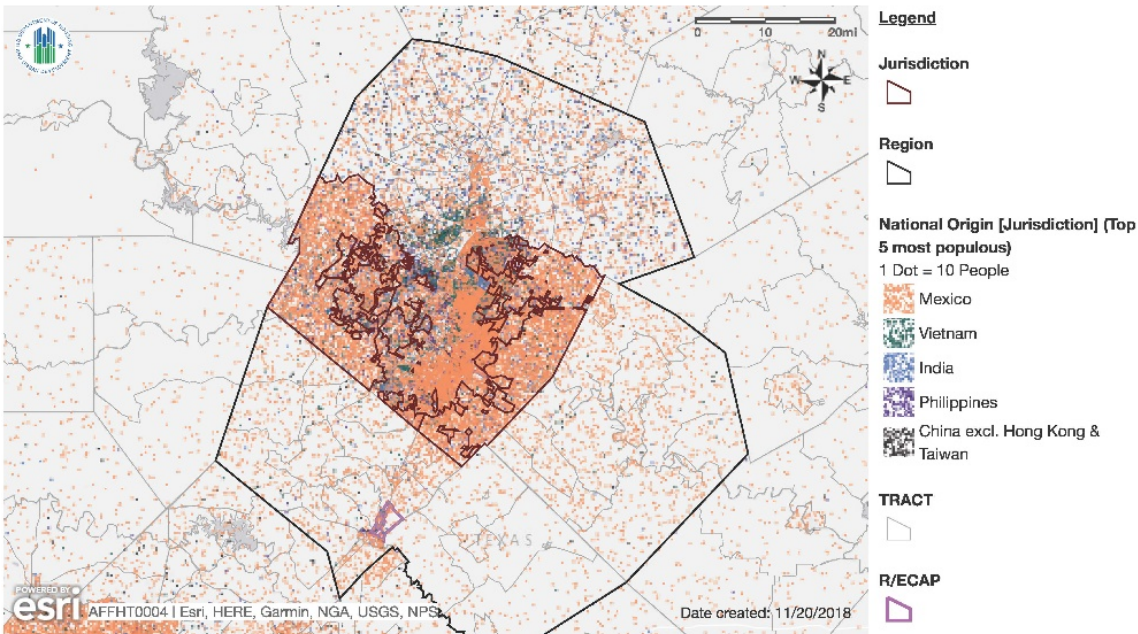
Source: HUD AFFH Data and Mapping Tool, version 4.

Race/Ethnicity Trends, 1990, 2000, and 2010, Travis County



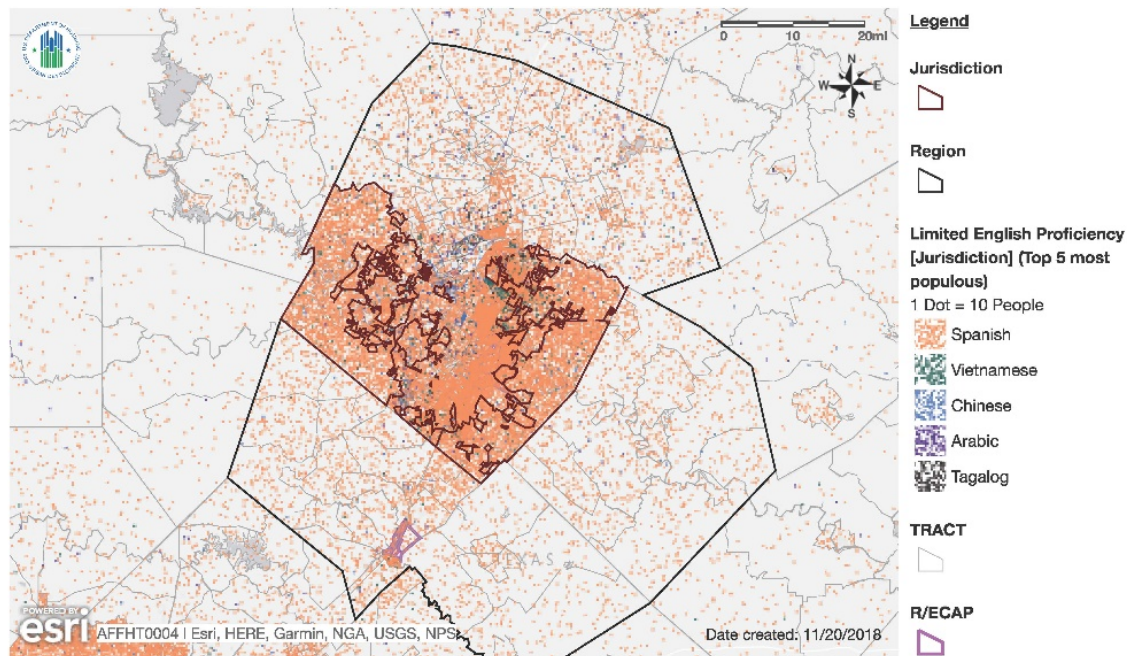
Source: HUD AFFH Data and Mapping Tool, version 4.

National Origin, 2010, Travis County



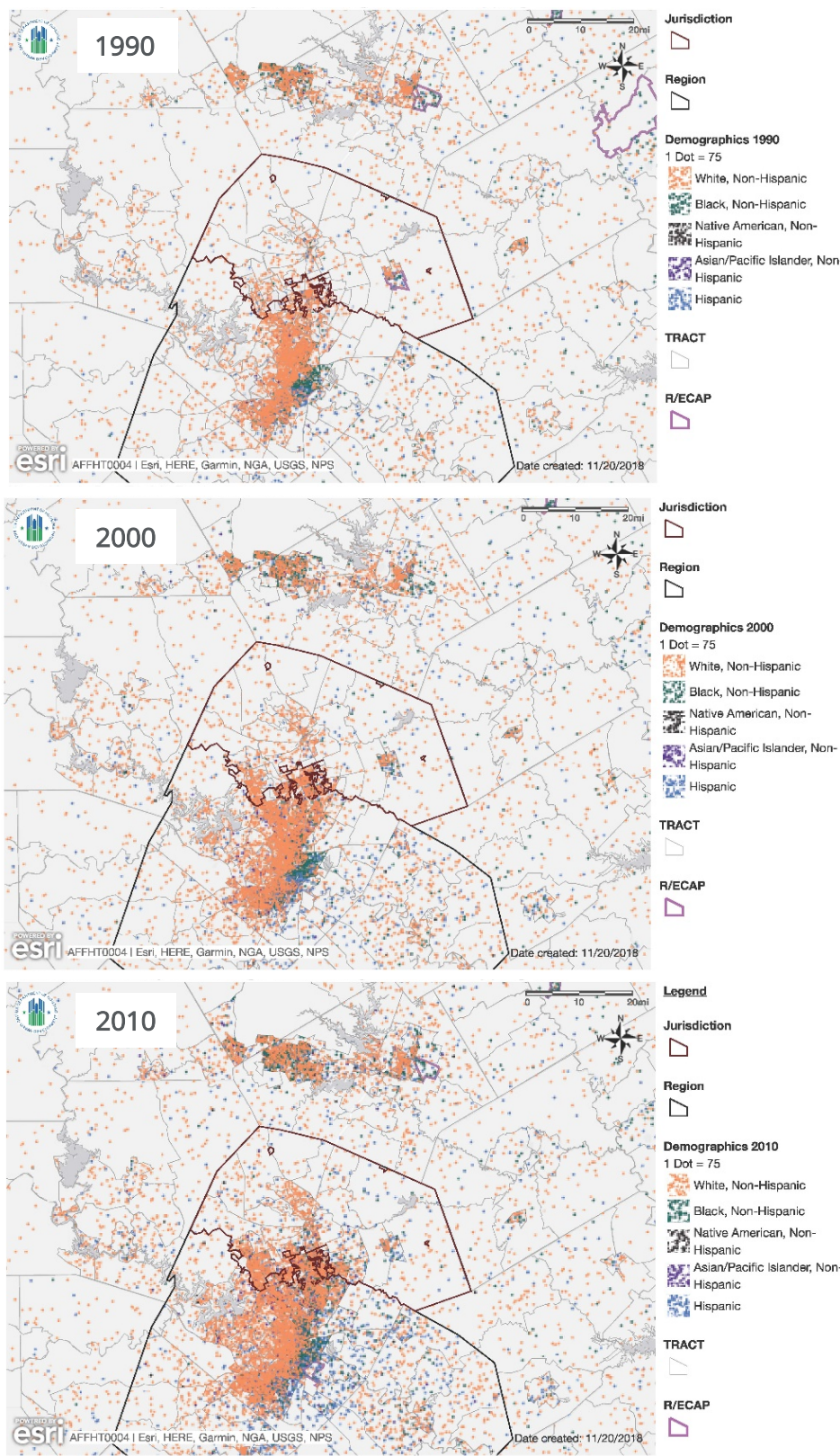
Source: HUD AFFH Data and Mapping Tool, version 4.

Limited English Proficiency (LEP), 2010, Travis County



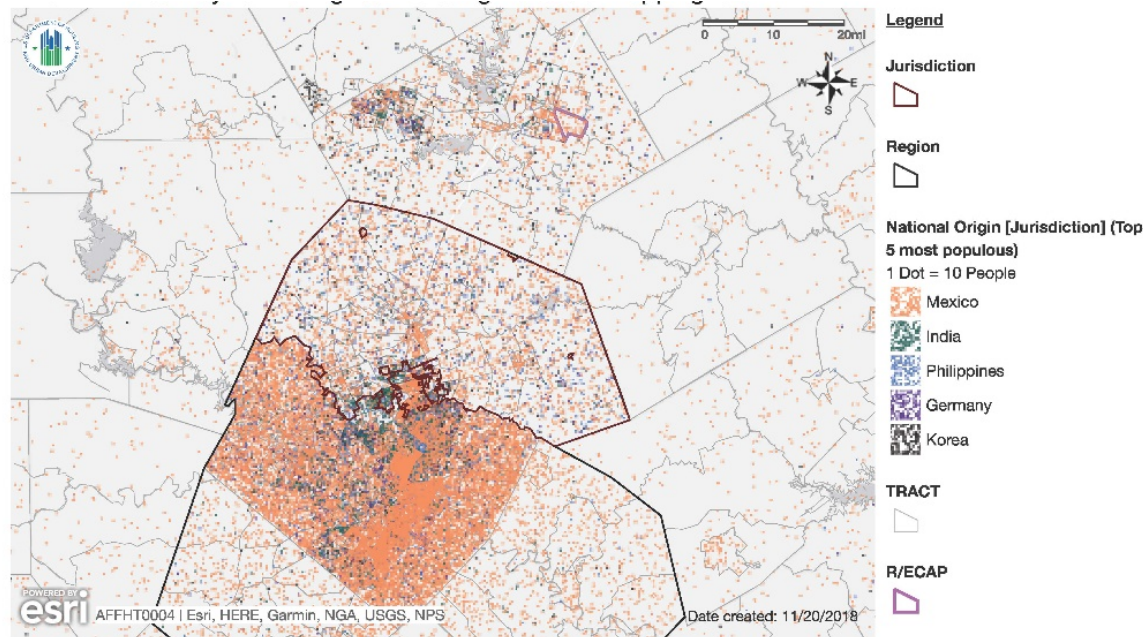
Source: HUD AFFH Data and Mapping Tool, version 4.

Race/Ethnicity Trends, 1990, 2000, and 2010, Williamson County



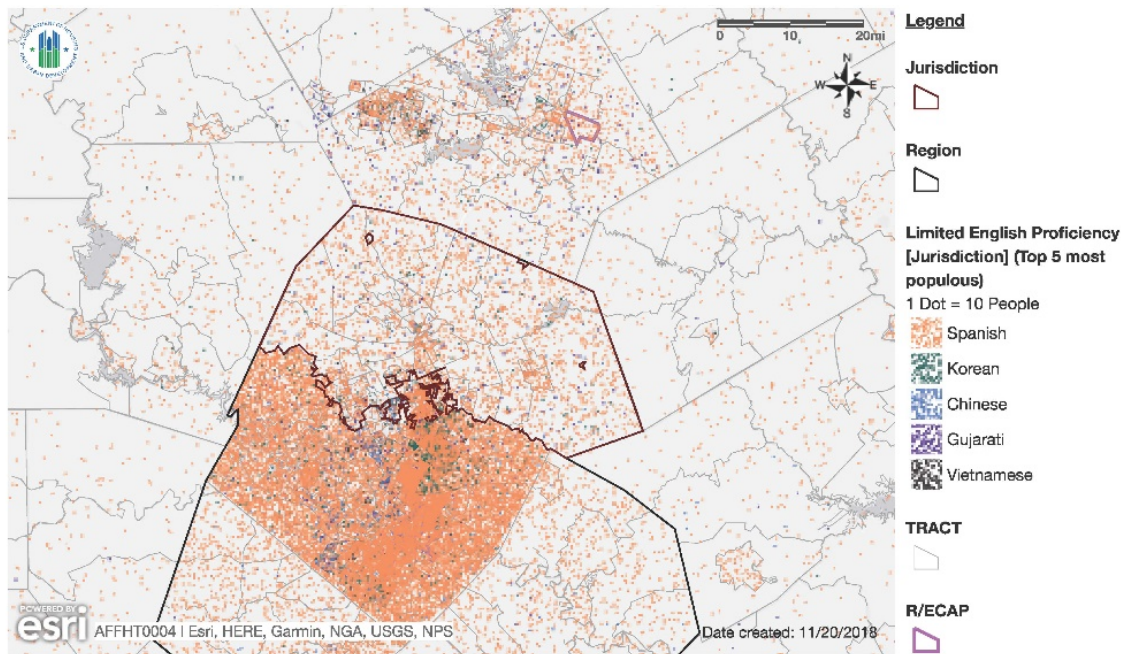
Source: HUD AFFH Data and Mapping Tool, version 4.

National Origin, 2010, Williamson County



Source: HUD AFFH Data and Mapping Tool, version 4.

Limited English Proficiency (LEP), 2010, Williamson County



Source: HUD AFFH Data and Mapping Tool, version 4.