

Beyond the 5Es:

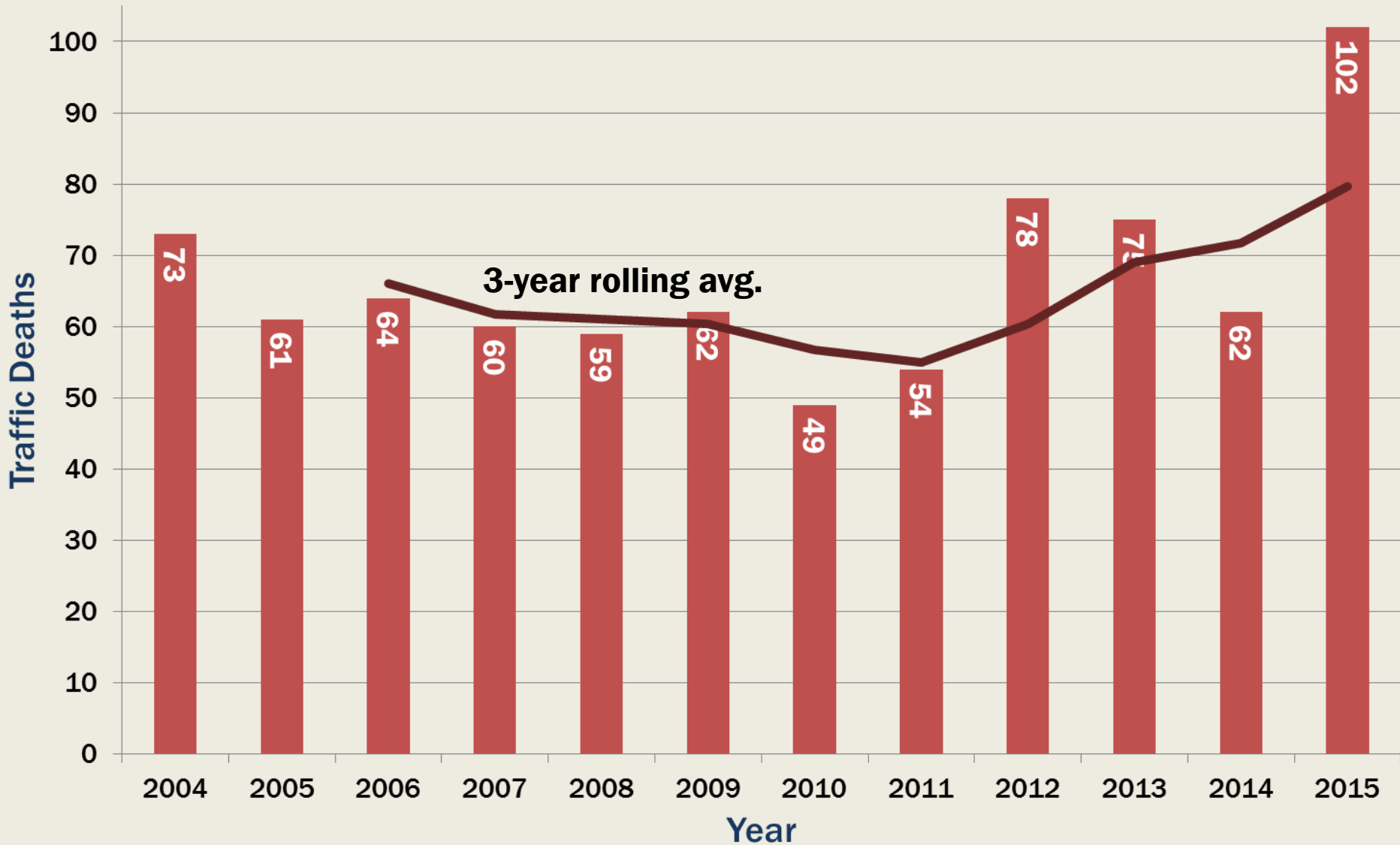
Adding equity to traffic safety

Vision Zero Conference

March 11, 2016

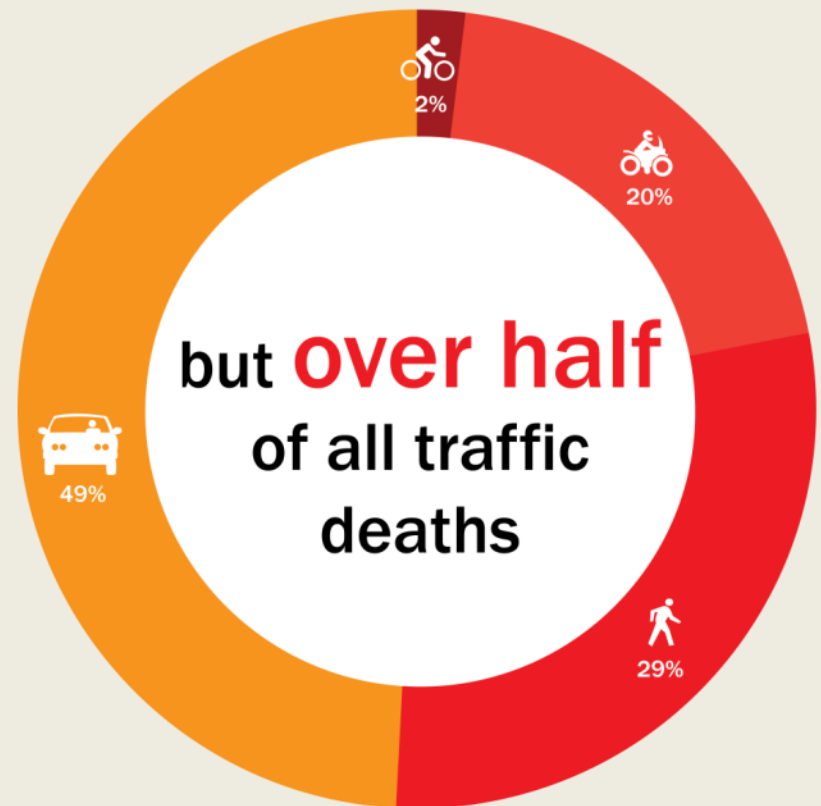
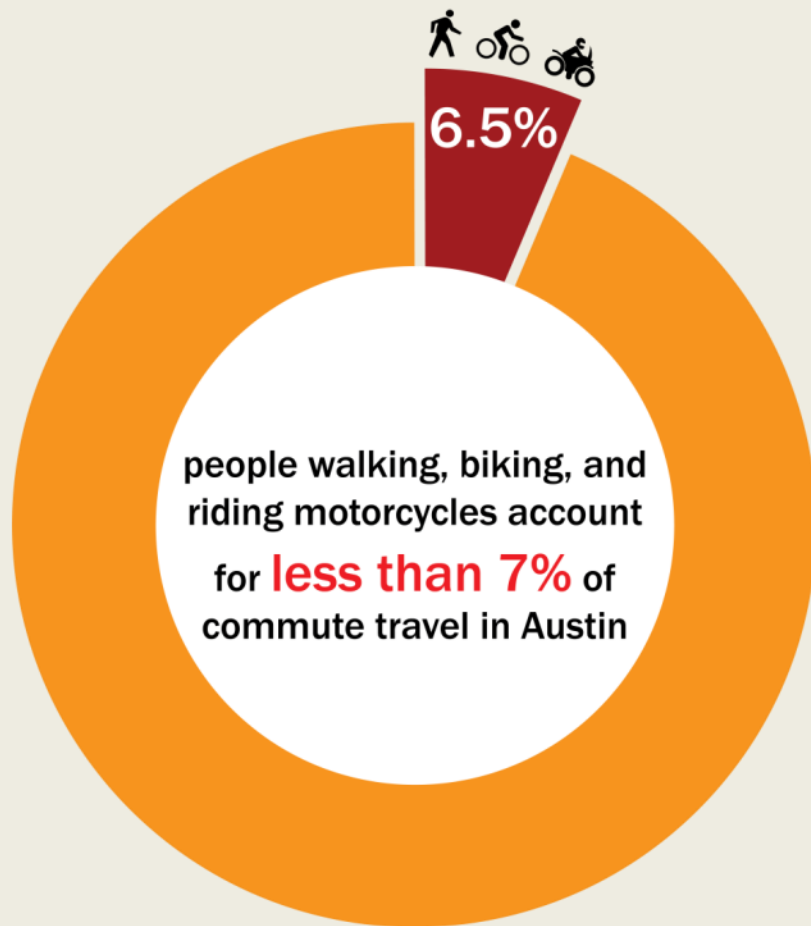


Austin traffic deaths



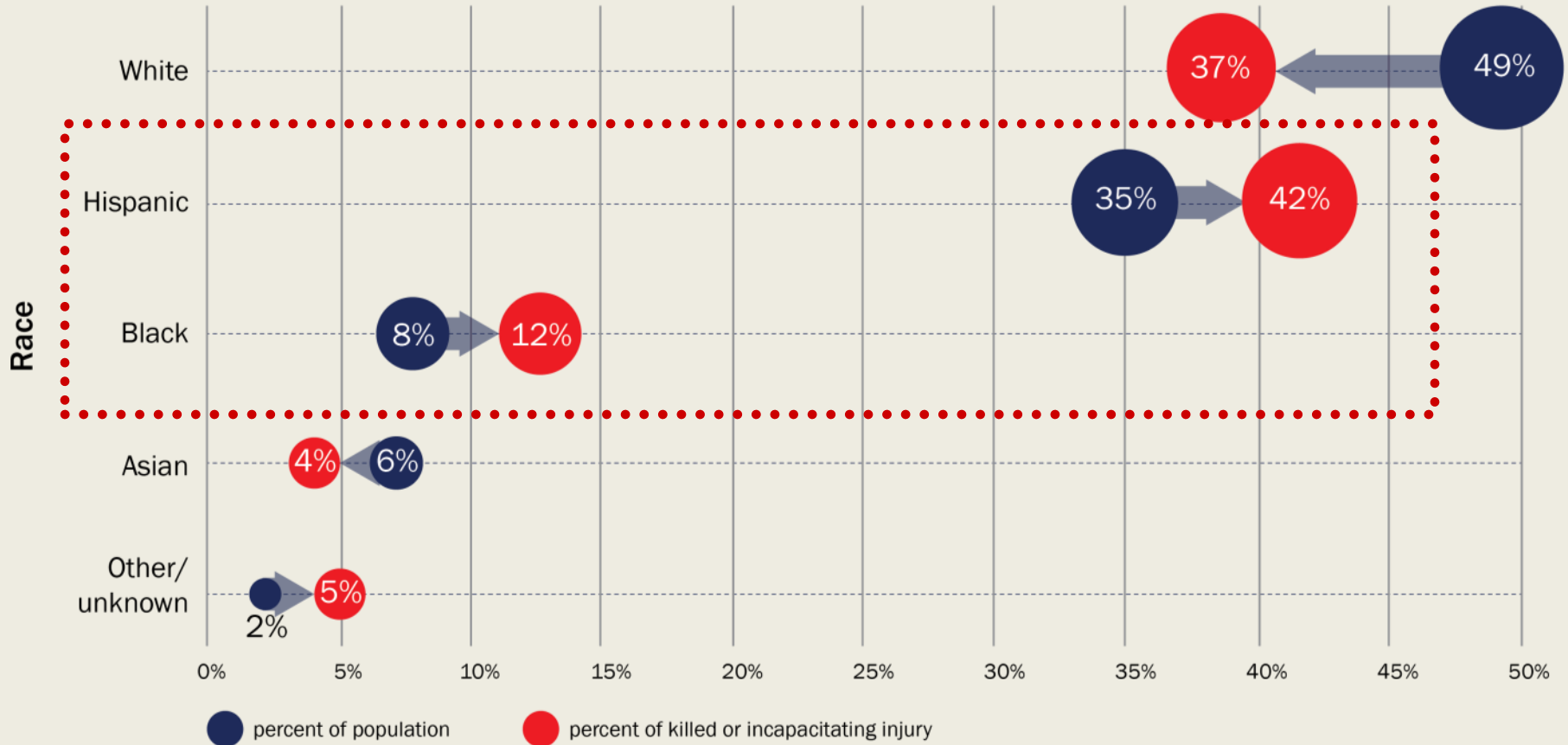
Who's Affected?

People walking, biking, & riding motorcycles



Who's Affected?

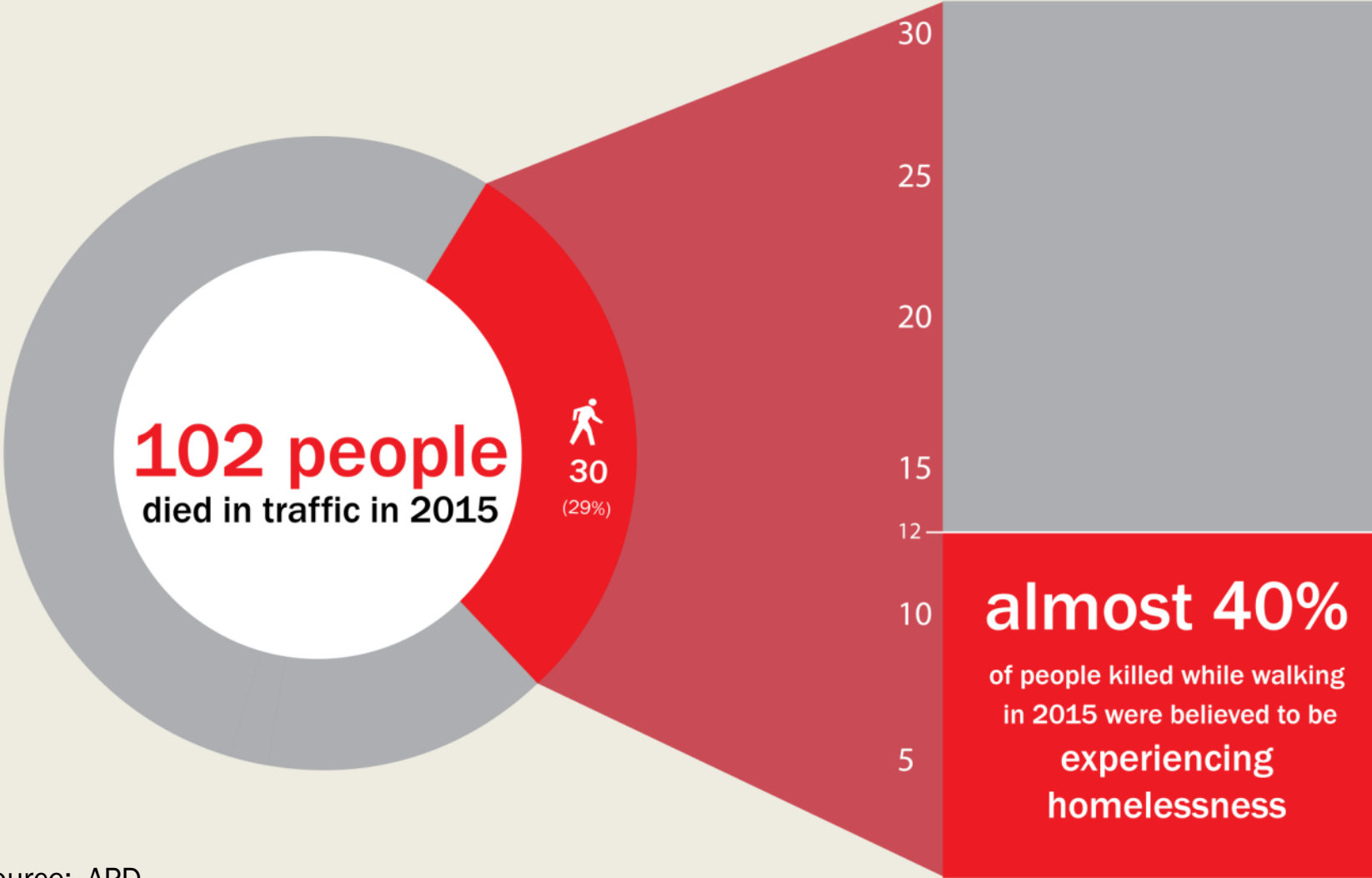
Black & Hispanic Austinites



Source: TXDOT and Census 2010

Who's Affected?

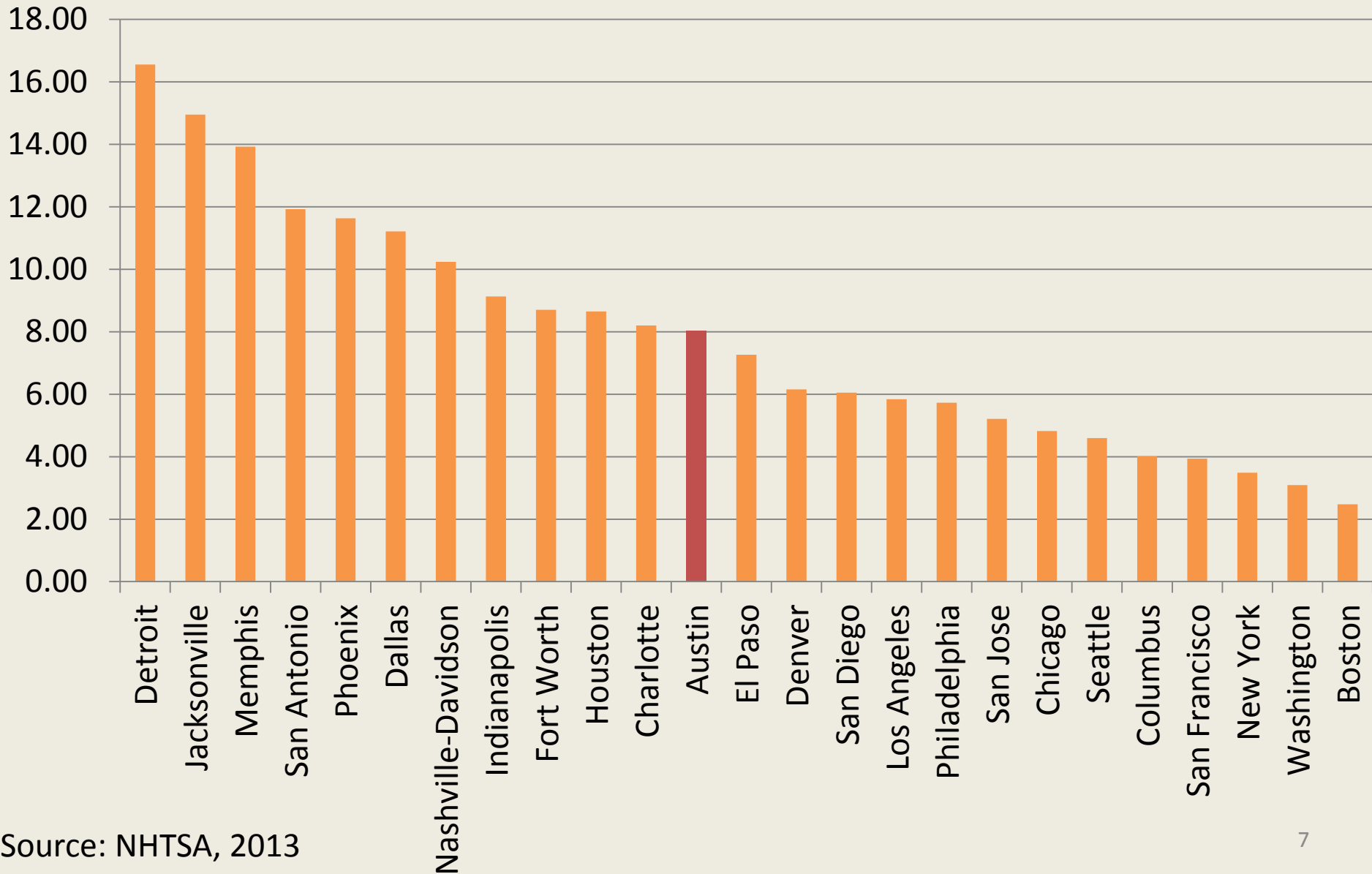
People experiencing homelessness



Source: APD

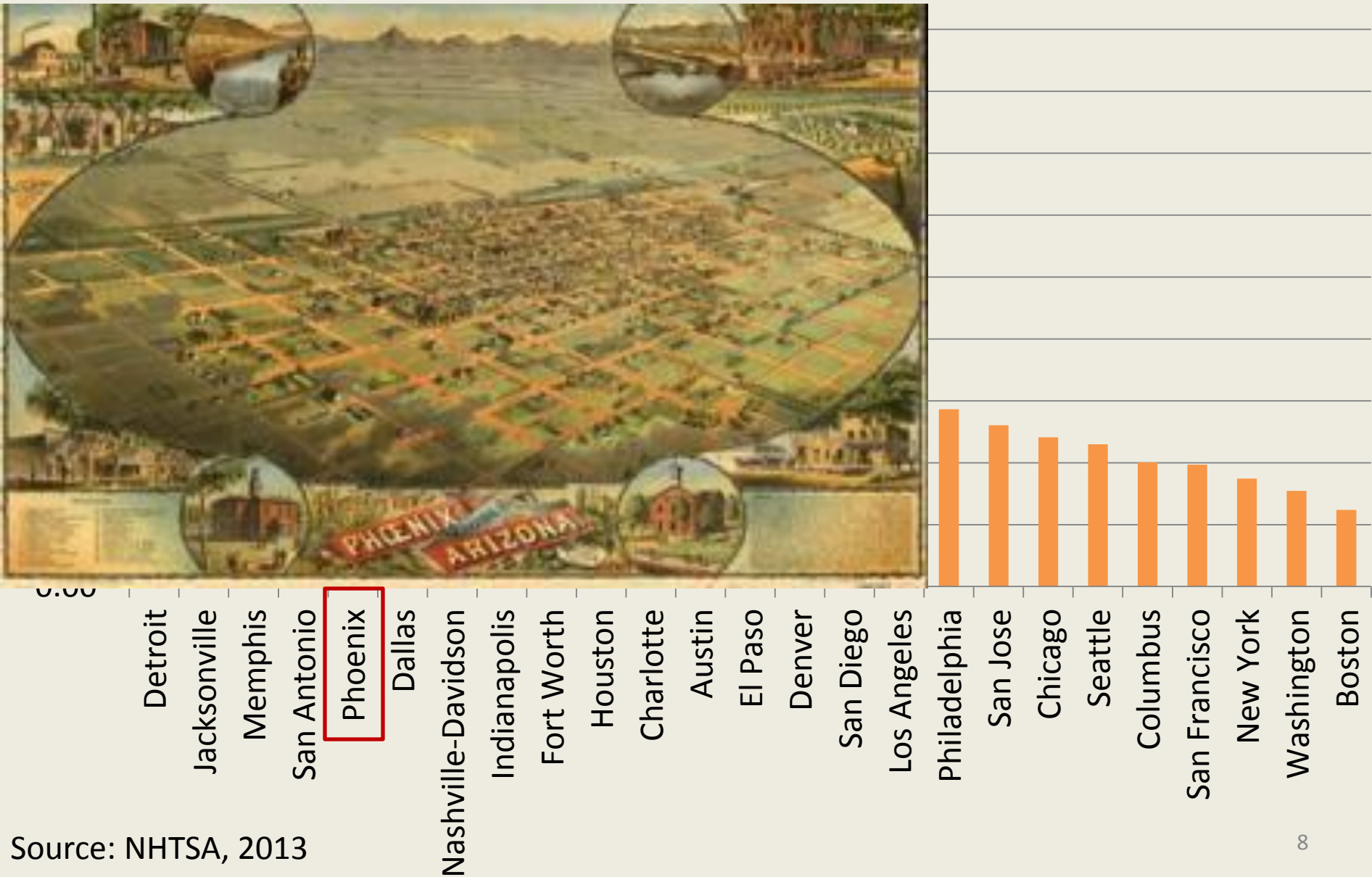
Land use & urban design directly affect safety. Cities that have compact and connected urban form reduce driving deaths.

Fatality rate per 100K



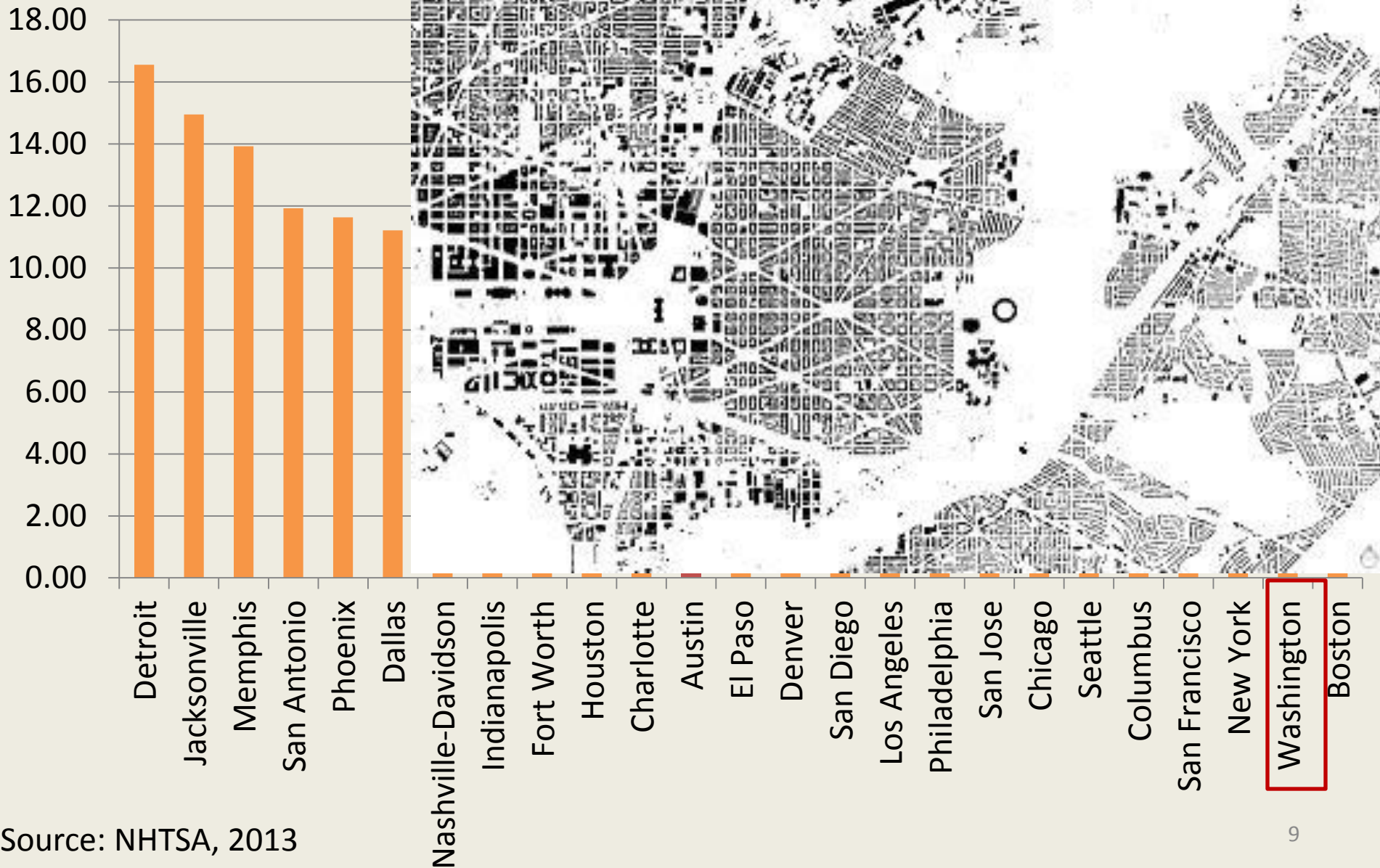
Source: NHTSA, 2013

Fatality rate per 100K



Source: NHTSA, 2013

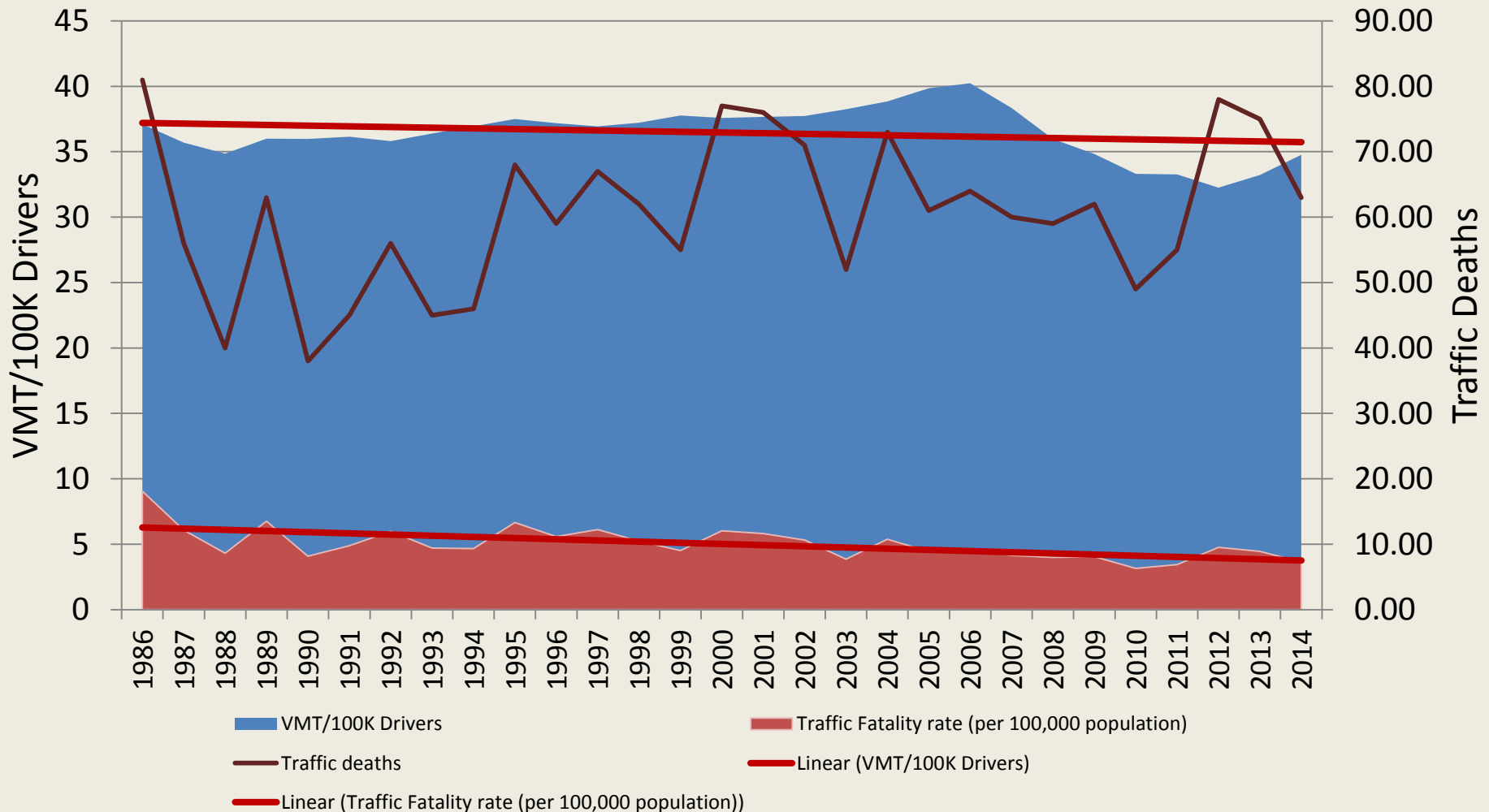
Fatality rate per 100K



Source: NHTSA, 2013

City form affects exposure

Traffic death rates in Austin declined slightly as VMT per capita also decreased slightly





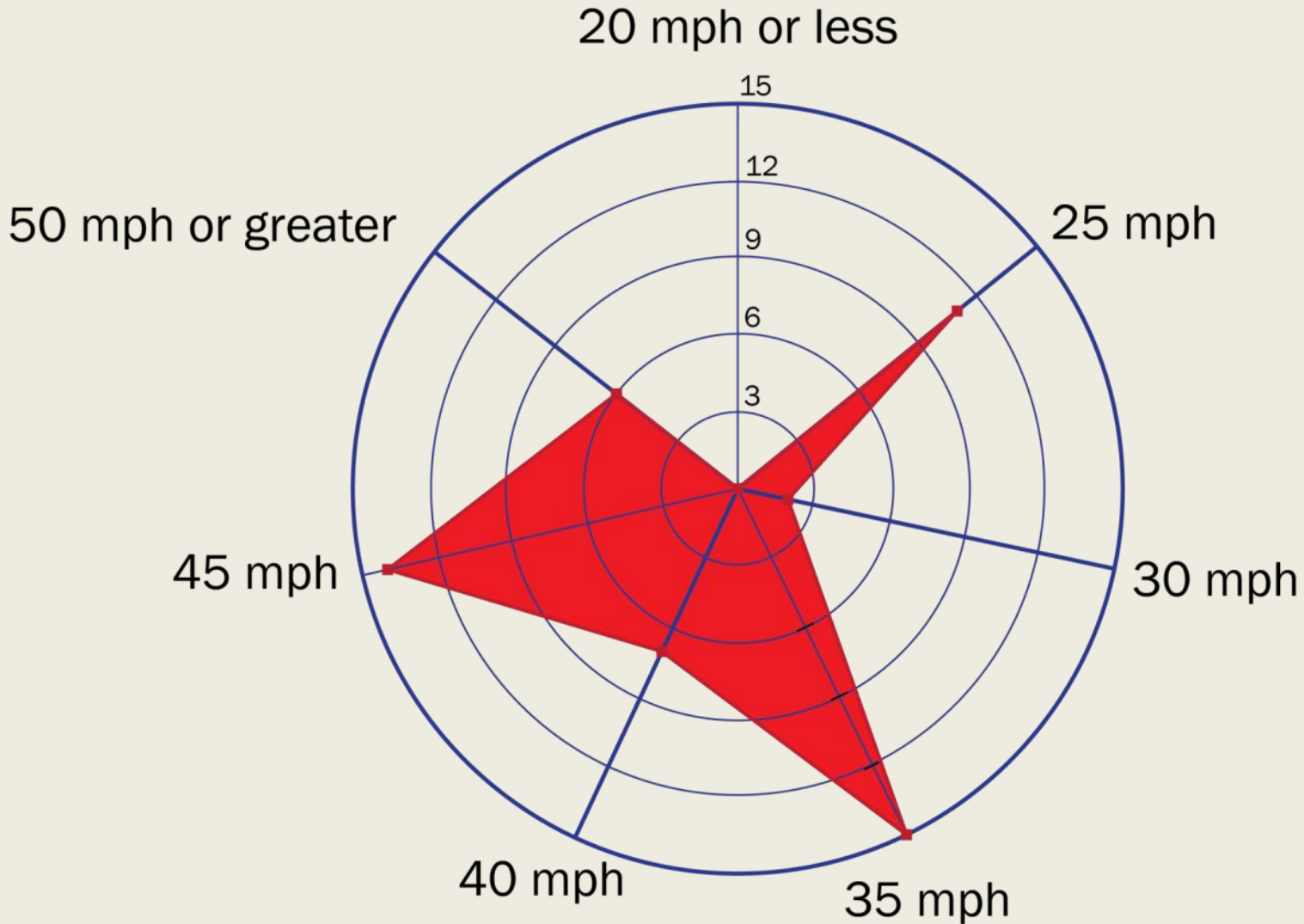
Walking deaths tend to be further from downtown & along higher-speed roads.





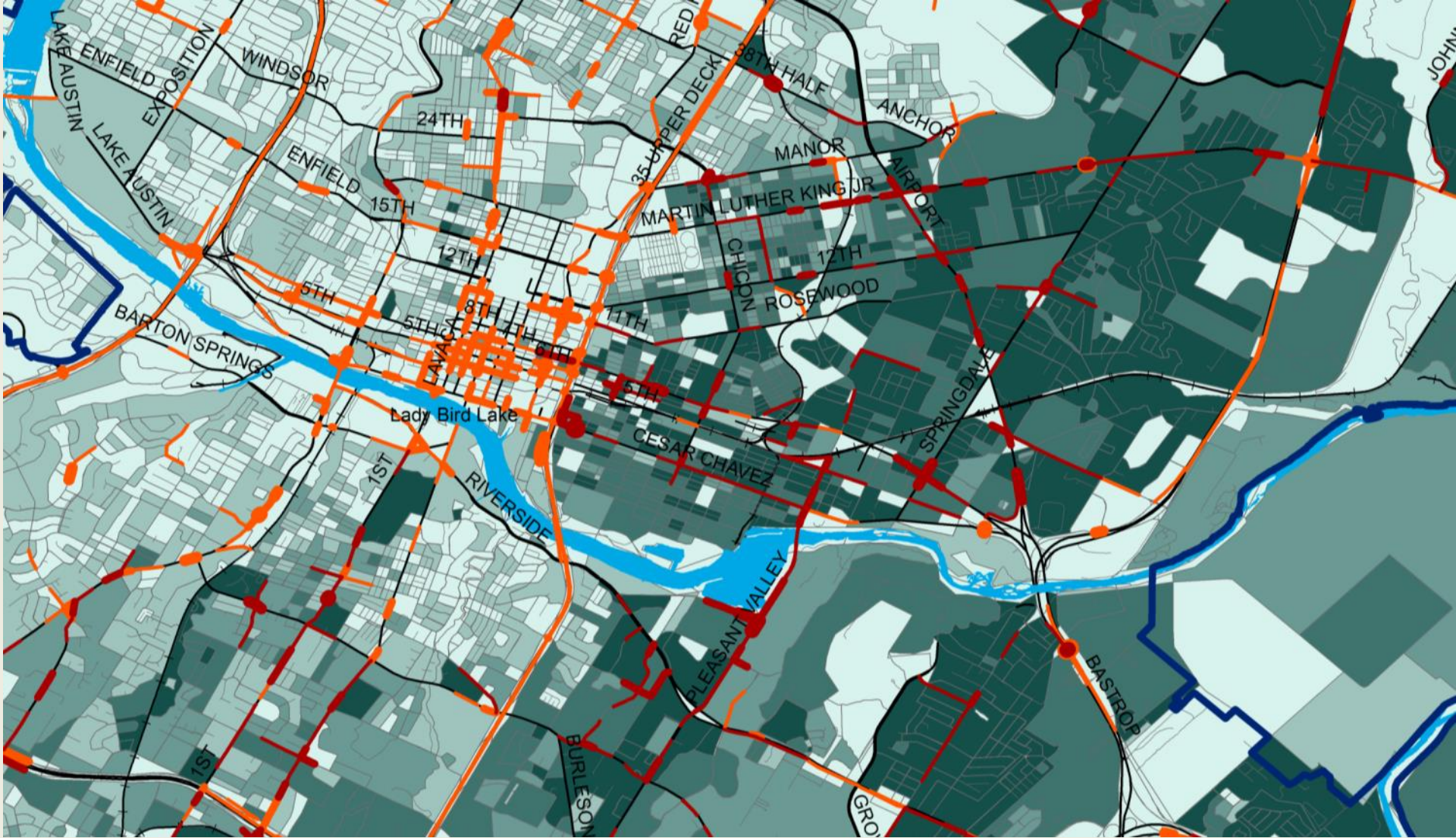
40% of Ped FTY crashes occurred on streets lacking sidewalks.

Ped FTY vs. Speed Limits

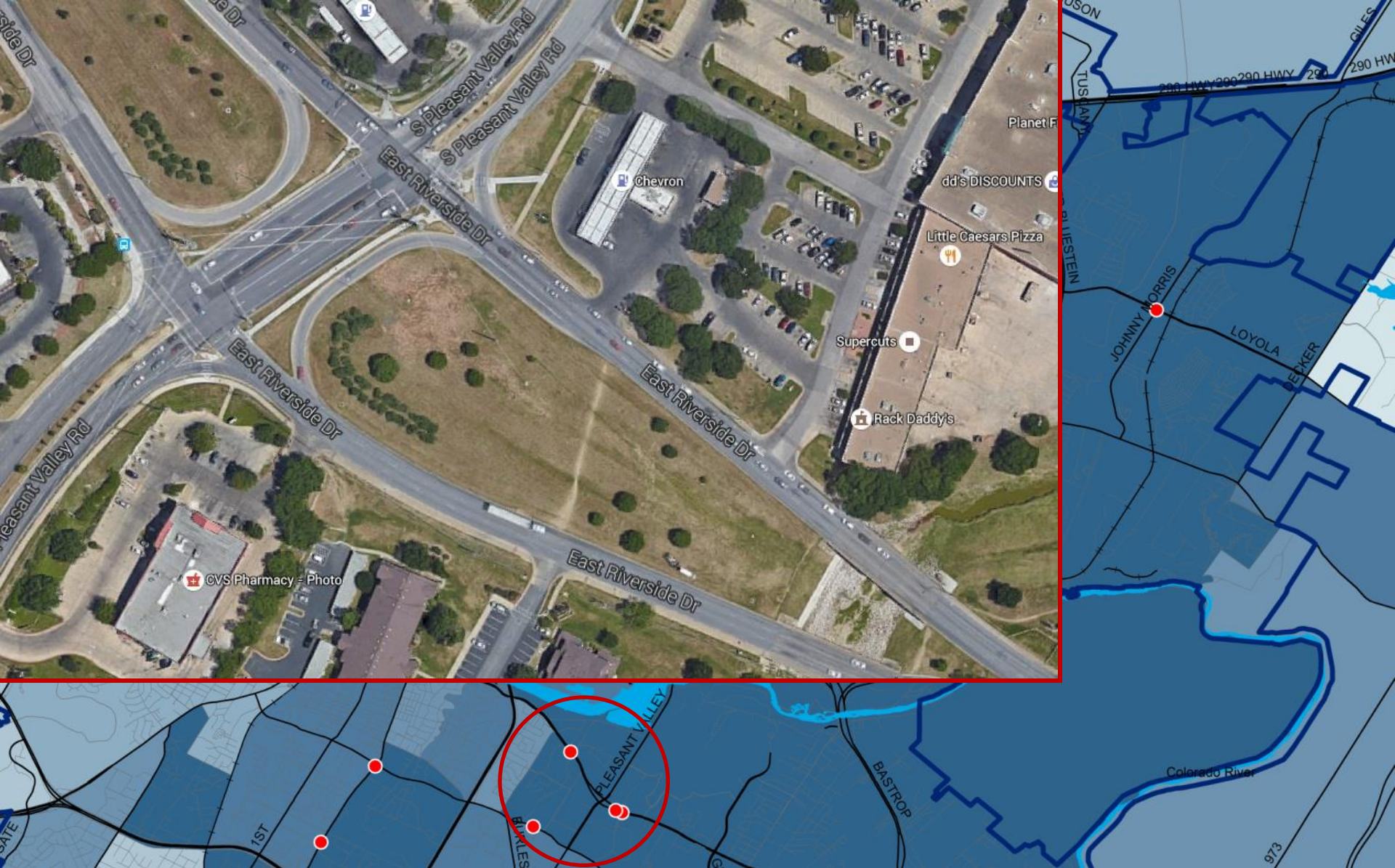


Many of the people walking were hit near bus stops

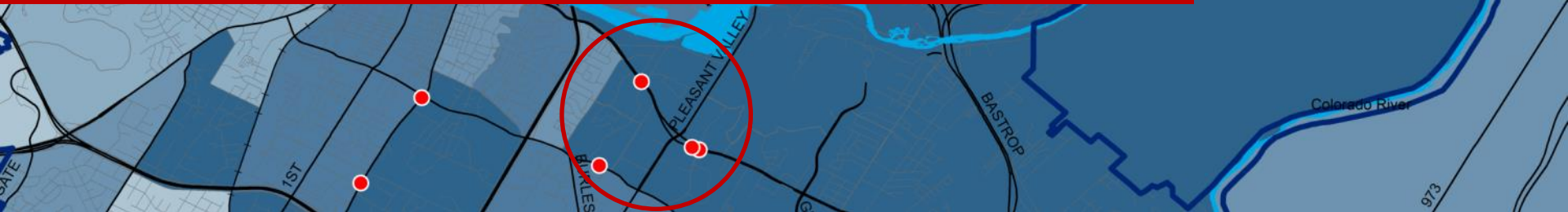
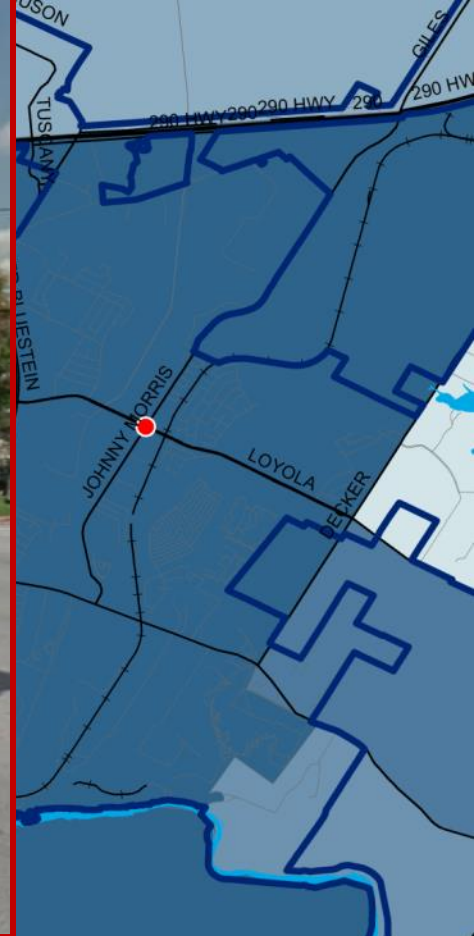




30% of the most dangerous road segments are in Census tracts where 25+% of the population is Black or Hispanic.



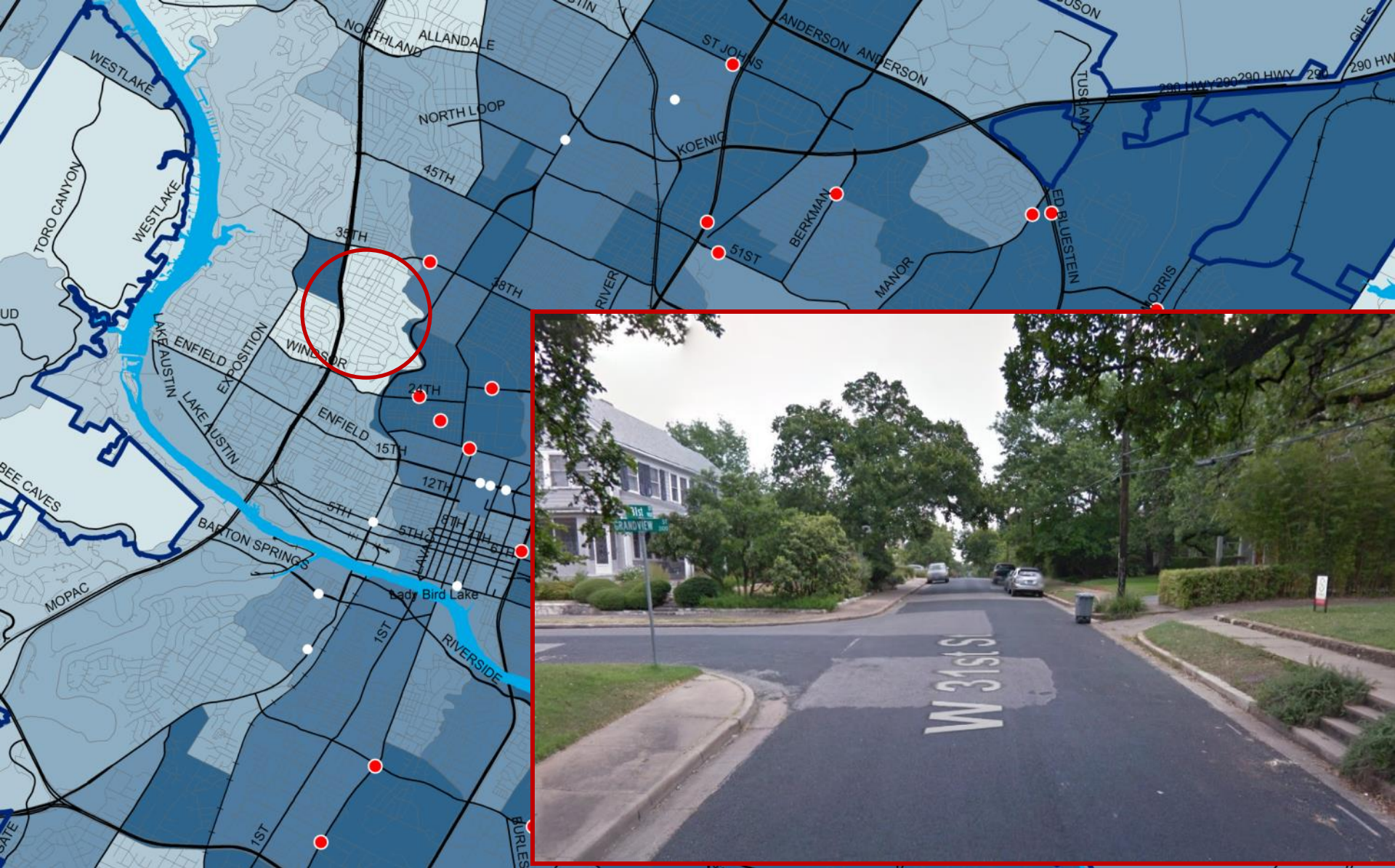
Ped FTY crashes are more common in Census tracts with greater poverty.



Ped FTY crashes are more common in Census tracts with greater poverty.

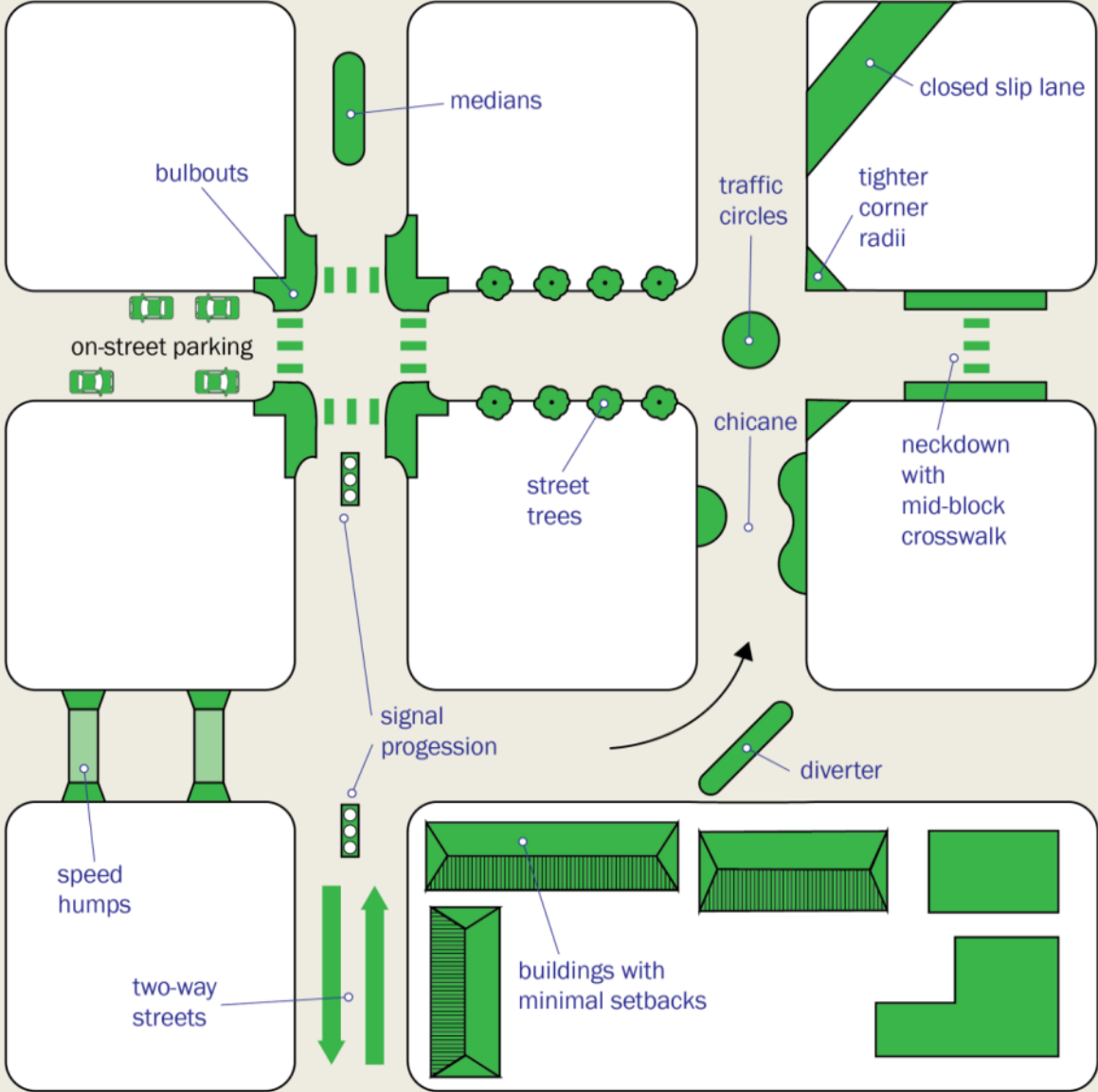


Ped FTY crashes are more common in Census tracts with greater poverty.



Ped FTY crashes are more common in Census tracts with greater poverty.

Design Solutions



shorter vs. longer blocks

People Solutions

1. **Engineering:** Distribute resources equitably.
2. **Enforcement:** Make sure we don't target behavior when design is the culprit. Don't blame the victim.
- 3 - 4. **Education & Encouragement:** Work with vulnerable populations to educate and encourage, but also better understand needs & barriers.
5. **Evaluation:** Are improving safety for vulnerable groups & in all parts of the city?
6. **Equity:** Make sure it's not just the usual players at the table. Include & focus on vulnerable pops.