

FOR IMMEDIATE RELEASE

Publication Date: January 20, 2015

Contact:

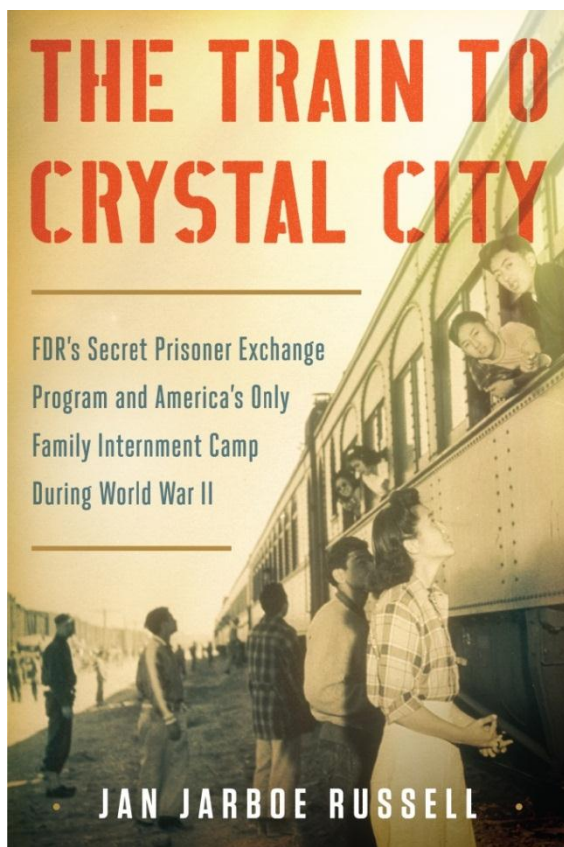
Gwyneth Stansfield
Senior Publicist, Scribner
212-632-4947

gwyneth.stansfield@simonandschuster.com

THE TRAIN TO CRYSTAL CITY

*FDR's Secret Prisoner Exchange Program
and America's Only Family Internment Camp
During World War II*

by Jan Jarboe Russell



“Engrossing... Russell documents in chilling details a shocking story of national betrayal.”

—*Kirkus Reviews*

“[An] informative, disturbing, and necessary reminder of the dangers produced by wartime hysteria.”

—*Booklist*

“Russell pulls no punches describing the cost of war and the conditions internees endured... a powerful piece.”

—*Publishers Weekly*

“...A story of heartbreaking dislocation, of lives smashed and ruined, and of almost unbelievable human endurance, resilience, and determination... a powerful book that will leave you shaking your head in disbelief.”

—S.C. Gwynne, *New York Times* bestselling author of *Rebel Yell* and *Empire of the Summer Moon*

Scribner is pleased to publish **THE TRAIN TO CRYSTAL CITY: FDR's Secret Prisoner Exchange Program and America's Only Family Internment Camp During World War II** by Jan Jarboe Russell (978-1-4516-9366-9), to be released on **January 20, 2015**.

In it you'll encounter the never-before-told secret history of an American internment camp in Crystal City, Texas, a desolate and dusty town just 35 miles from the Mexican border. During WWII, train cars with shades pulled shut delivered over 6,000 civilians to the guards at Crystal City. Men of German, Japanese, and Italian descent and their families—many of whom were US citizens—were ripped from their homes across the United States and Latin America and deposited at Crystal City without due process. They were arrested, charged with no crime, and incarcerated simply because of their country or culture of origin.

With expert investigation and skilled story-telling, Russell (*Lady Bird: A Biography of Mrs. Johnson*) exposes this little-known chapter of America’s history. Through extensive interviews with two women who were interned in Crystal City as children — Ingrid Eiserloh of Strongsville, Ohio and Sumi Utsushigawa of Los Angeles — Russell reveals not only the harsh realities of day-to-day life at the camp, but also the covert purpose of the entire “Quiet Passage” program. Throughout WWII, hundreds of prisoners from Crystal City, including American-born children, were traded for more “important” Americans behind enemy lines in Japan and Germany. Many of these children, including Sumi and Ingrid, and their parents struggled to rebuild their lives in foreign cities decimated by the war. They fought to return to the United States.

Complete with archival and family photographs, Russell’s latest work is an important addition to our understanding of World War II, and a timely read as we continue to grapple with contemporary international issues of preventative detainment and prisoner exchanges. Yet despite the seriousness of her inquiry and the harrowing experiences of internees, **THE TRAIN TO CRYSTAL CITY** is ultimately an inspiring story of resilience and patriotism.



Jan Jarboe Russell is a Neiman Fellow, a contributing editor for *Texas Monthly*, and has written for the *San Antonio Express-News*, *The New York Times*, *Slate*, and other magazines. She is the author of *Lady Bird: A Biography of Mrs. Johnson* and has also compiled and edited *They Lived to Tell the Tale*. She lives in San Antonio, Texas, with her husband, Dr. Lewis F. Russell, Jr.

JAN JARBOE RUSSELL WILL BE TOURING TO:

SAN ANTONIO, TX	The Twig Book Shop @ Coates Chapel – Southwest School of Art	Wednesday, January 14 / 5pm
NEW YORK, NY	Barnes & Noble / Upper West Side	Tuesday, January 20 / 7pm
PHILADELPHIA, PA	Barnes & Noble / Rittenhouse Square	Thursday, January 22 / 7pm
AUSTIN, TX	Book People	Monday, January 26 / 7pm
SEATTLE, WA	Elliot Bay Book Co.	Tuesday, January 27 / 7pm
LOS ANGELES, CA	Vroman’s	Thursday, January 29 / 7pm
WASHINGTON, DC	Politics & Prose	Tuesday, February 17 / 7pm
HOUSTON, TX	Brazos Bookstore	Thursday, February 26 / 7pm
SAN ANTONIO, TX	San Antonio Book Festival	details to come
DALLAS, TX	Barnes & Noble	Thursday, April 16 / 7pm
FORT WORTH, TX	Barnes & Noble	Friday, April 17 / 7pm

For additional information or to schedule an interview with Jan Jarboe Russell, contact:
Gwyneth Stansfield / 212-632-4947 / gwyneth.stansfield@simonandschuster.com

THE TRAIN TO CRYSTAL CITY

Jan Jarboe Russell

Scribner | on-sale January 20, 2015

\$30 | 416 pages | 978-1-4516-9366-9

www.simonandschuster.com

ABOUT SCRIBNER

Scribner is an imprint of Simon & Schuster, Inc., part of the CBS Corporation. Simon & Schuster is a global leader in the field of general interest publishing, dedicated to providing the best in fiction and nonfiction for consumers of all ages, across all printed, electronic and multi-media formats. Its divisions include the Simon & Schuster Adult Publishing Group, Simon & Schuster Children's Publishing, Simon & Schuster Audio, Simon & Schuster Digital, and international companies in Australia, Canada, and the United Kingdom. For more information, visit our website at www.simonandschuster.com.