

Holly Shores / Edward Rendon Sr. At Festival Beach Master Plan

**Michael Van Valkenburgh Associates, Inc., Landscape Architects
20 August 2012**

MVVA Team

MICHAEL VAN VALKENBURGH ASSOCIATES

Matthew Urbanski, Chris Matthews

McCANN ADAMS STUDIO

Jana McCann, Jim Adams

HR&A ADVISORS

Jamie Springer, Elissa Hoagland

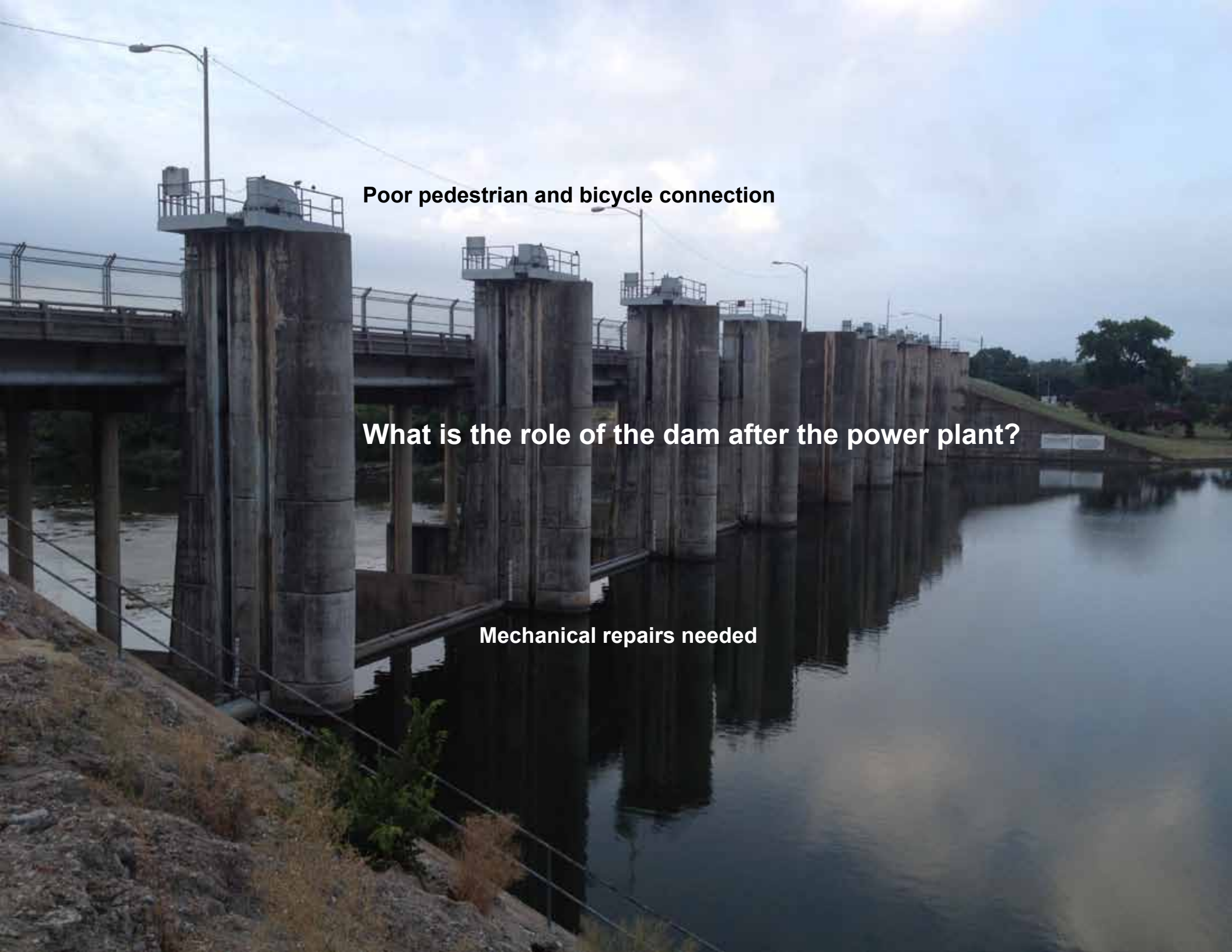
ELENA Q. MEDIA & ADVERTISING

Elena Q. Rodriguez, Paul Saldana

ADISA COMMUNICATIONS

Shuronda Robinson

A Walk Through the Park



Poor pedestrian and bicycle connection

What is the role of the dam after the power plant?

Mechanical repairs needed

Consider the role of the dam in storm water management, habitat creation, and as a connector for pedestrians and bicycles.





What is the role of the lake after the power plant?

Small, distributed parking lot





Public art with a park function

Representation of local culture

Trail of Tejano Legends

"Estamos en Tejas" by: Connie Arismendi, 2008

For more information visit www.austinlatinomusic.com/trail.html



Featured Artist's Biography

Roy Montelongo (1938-2001)

The oldest of twelve, Roy Montelongo was born into a family with a strong love of music. His father played the clarinet, saxophone, bajo sexto, and more, and he inspired Roy to both play and read music. As a teenager, he took up the saxophone, started singing, and began playing with bands.

He soon played with Beto Villa's Orquesta, and later went on to play with Isidro Lopez and Alfonso Ramos before forming his own band in 1964. Roy toured both regionally and nationally, and recorded many hits. Roy was highly acclaimed with a distinct singing style, accomplishments as a saxophonist, and skills as a musical arranger.

As a popular and successful artist, Roy Montelongo recorded over 20 albums, symbolized here sculpturally. After his father's death, Roy focused his career on radio broadcasting. For many years, his popular program ¡Estamos en Tejas! was heard on the Austin airwaves.



El mayor de doce niños, Roy Montelongo fue criado en una familia con un amor fuerte a la música. Su padre tocaba varios instrumentos incluyendo el clarinete, el saxofón y el bajo sexto, e inspiró a Roy a estudiar música. De adolescente, Roy aprendió a tocar el saxofón y a cantar, y empezó a tocar con grupos.

Dentro de poco tiempo, se unió a la orquesta de Beto Villa, y luego fue a tocar con Isidro Lopez y Alfonso Ramos antes de formar su propio conjunto en 1964. Roy estuvo de gira a nivel regional y nacional y grabó muchos éxitos. Gracias a su voz y estilo inconfundible, y sus talentos como saxofonista y arreglista musical, Roy fue sumamente aclamado.

Como un artista exitoso, Roy grabó más de 20 discos, simbolizados aquí en forma de escultura. Después de la muerte de su padre, Roy concentró su carrera en la radiodifusión, y por muchos años su programa popular ¡Estamos en Tejas! se podía escuchar en Austin.

A photograph of a paved path curving through a grassy area. The path is made of grey asphalt and curves from the foreground towards the left background. The surrounding area is covered in green grass, and there are several large, leafy trees in the background. The lighting suggests it's daytime.

Path gradient 8%

Path width 6'



Bridge width 6'

Threshold



Accumulating trash, burdened wildlife



Protected water, bounded scale

Consider the role of the lake in storm water management and habitat creation.






Views to dam

Deteriorating edge



Penninsula width approx 50'

Path width 6'

A wide, light-brown dirt path leads from the foreground towards the left side of the image. On the right side of the path, there is a wooden deck with a dark green railing. The railing is made of vertical posts and horizontal rails. The deck is situated at the edge of a body of water, which is visible in the background. The area is surrounded by lush green trees and bushes. In the distance, a building with a yellow roof is visible through the trees. The text "Designed water edge" is overlaid on the image, pointing to the deck area.

Designed water edge



Undesigned water edge

Lakeside trail ends at power plant



Configure the Austin Energy boundary to optimize pedestrian, bicycle and vehicle access in the new park area.





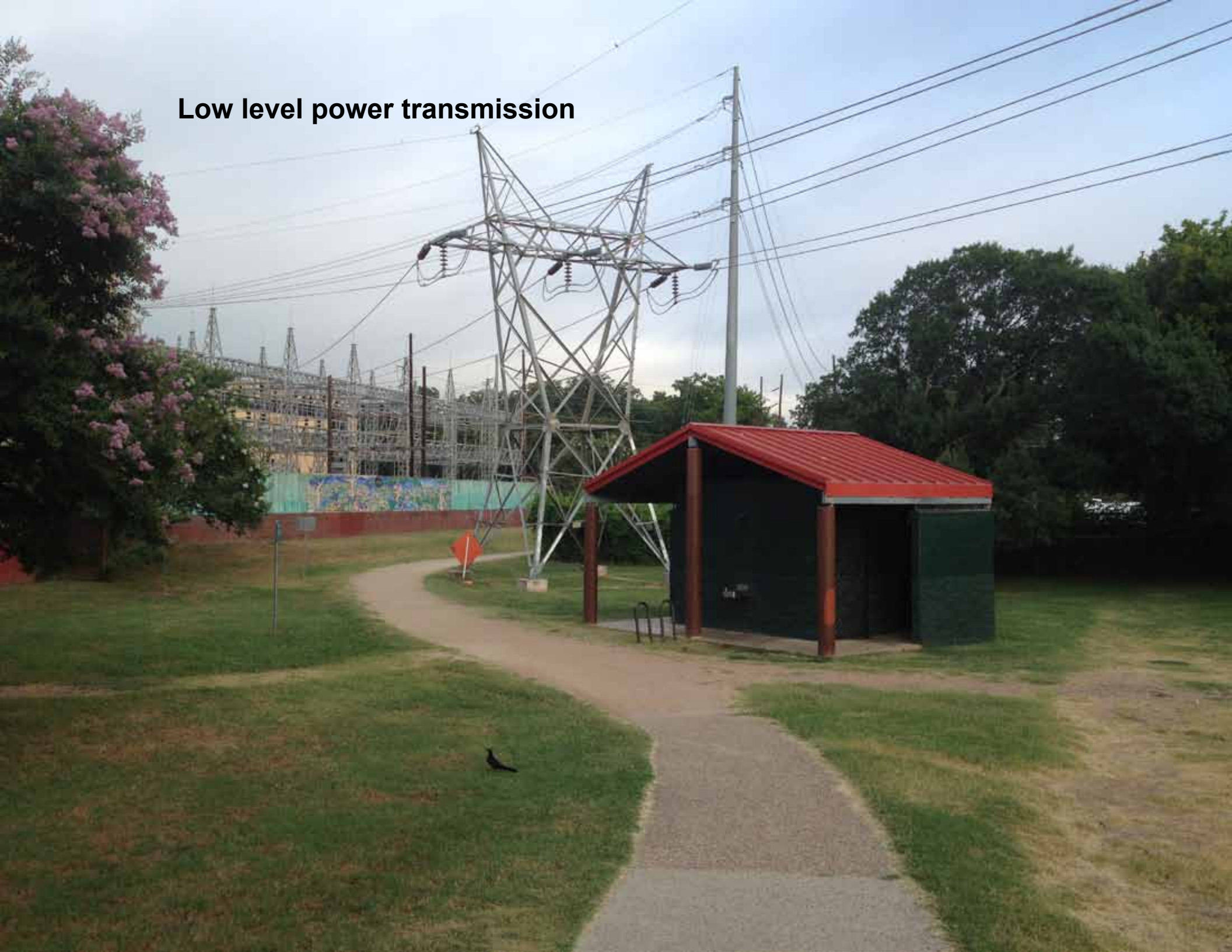
Poor connection to Metz Park

Path width 4'



Unplanned artistic expression

Low level power transmission





Planned artistic expression



Path width varies



Planned artistic expression



Well used neighborhood amenity



Disused infrastructure



Performance stage

Playground

No shade



Retain existing playgrounds while improving shade, planting, updating equipment, and enlarging where necessary.





Water play at Metz Recreation Center

Morning drop-off





Temporary parking lot on baseball field

Remove the temporary parking lot and rebuild the ball field at Metz?



Planned artistic expression



Shaded poolside

Metz swimming pool



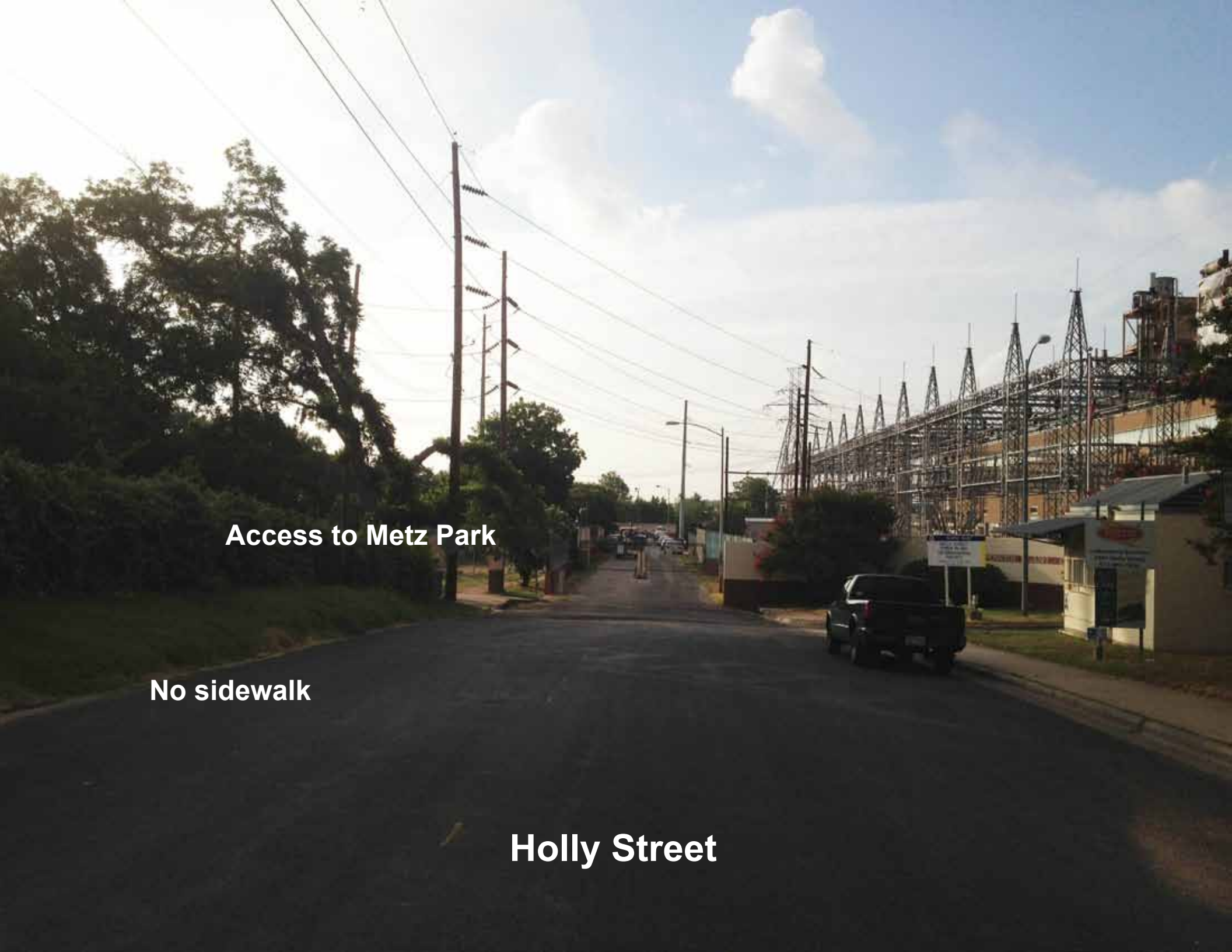
Shaded sidewalk

Canterbury Street





Mildred Street, quiet residential character



Access to Metz Park

No sidewalk

Holly Street

Improve access to Metz Park and new parkland areas.



Public art improves connectivity





Shaded walkway

How do you value planned and unplanned artistic expression?



Public open space as green connection

Picnic tables




gdc



JUST AS
HIS PREDECESSORS

How do you value planned and unplanned artistic expression?

A photograph of a dirt path leading into the distance. On the left is a fence made of a brick base and a green plastic top. On the right is a grassy area with several large, leafy trees. The path is shaded by the trees on the right. In the background, a house and more trees are visible.

Shaded walkway

Featureless boundary fence



Public art improves connectivity

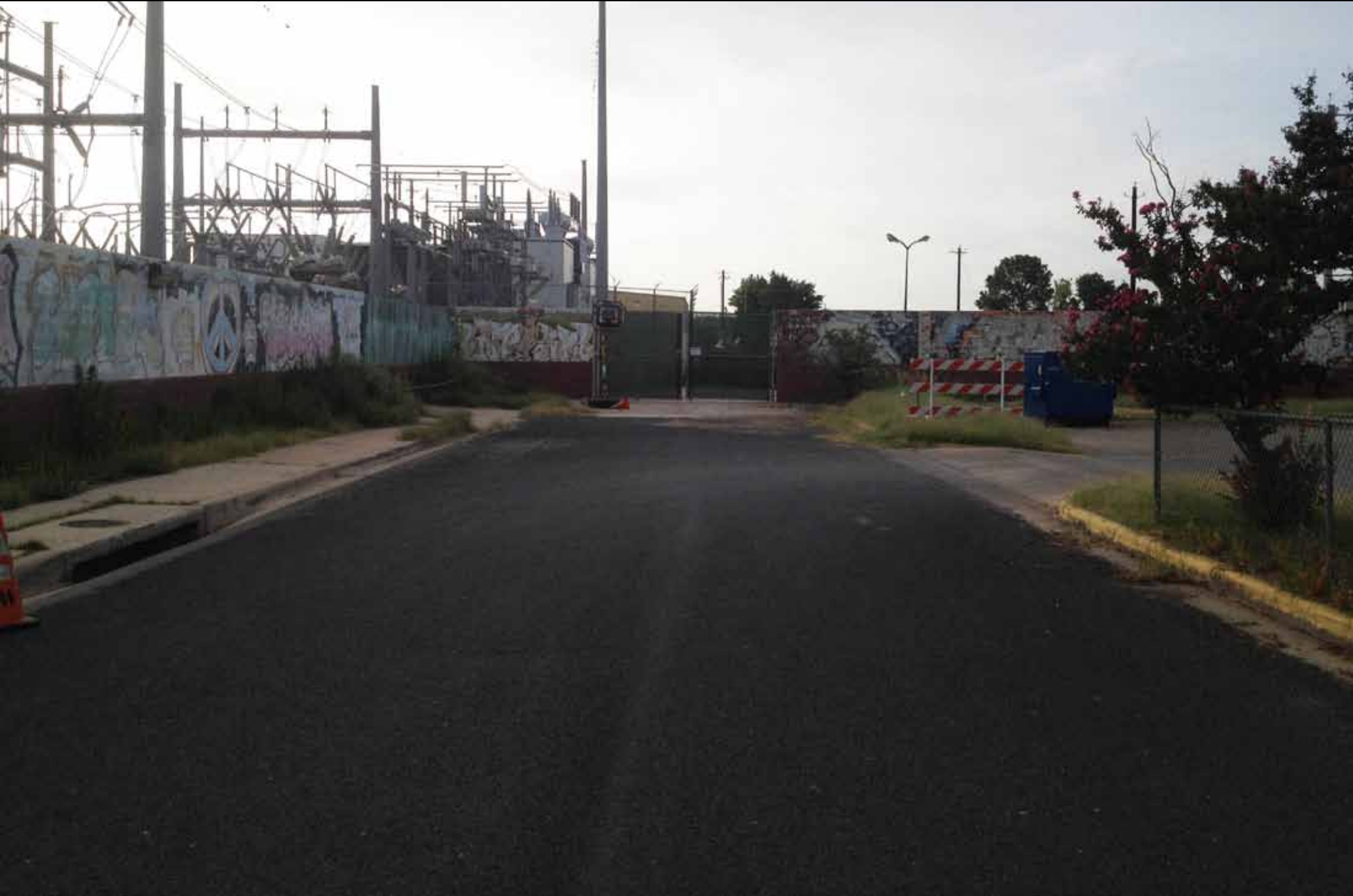
Retain public art and add to the collection in a way that enhances the experience and function of the park.





Riverview Street ends at power plant

Reopen Riverview Street to improve access to the new parkland areas.



Intensely used baseball fields with aging infrastructure



Little shade



Floodlights

Little shade



Improve the existing sports fields and surrounding landscape, adding shade trees and specator lawns.



Focus of social activity



A photograph of a park scene. In the foreground, a light-colored gravel path leads from the bottom center towards the middle ground. To the left of the path is a green lawn. Several large trees with thick, gnarled trunks and dense green foliage are scattered across the scene. Many of these trees are covered in bright pink flowers. In the background, a chain-link fence runs across the frame, behind which is a green field, possibly a sports field, and some structures that look like bleachers or a shelter. The sky is overcast and grey. Two text labels are overlaid on the image: 'Feeling of enclosure' in white text on the left, and 'Shaded lawn and pathway' in black text at the bottom center.

Feeling of enclosure

Shaded lawn and pathway

Focus of water-based activity

OPEN



Focus of social activity





Unwelcoming park edge

Remove fences along Jesse E. Segovia Street to open access between the neighborhood and the park.



Little shade

Unwelcoming park edge



AUSTIN
PARKS AND
RECREATION

Fiesta Gardens

2101 Jesse E. Segovia St.

Unwelcoming park edge



A photograph of an outdoor courtyard. In the foreground, there is a large, circular, empty fountain basin with a yellow wall and a brick top. The basin is surrounded by a paved area. In the background, there is a yellow building with a red door and windows. There are several palm trees and other green plants. The sky is blue with some clouds.

Little shade

Extensive hard surfaces

Empty fountain basin

Significant neighborhood history

Rich plantings



How can Fiesta Gardens become a center for everyday park activity?



Significant neighborhood history

Little used park facility



Sheltered water, center of activity

Limited public access

Rich garden plantings





Recently created park connection

Park maintenance facility



Limited public access

Open up and renovate Fiesta Gardens as a park amenity and focus of activity.



A photograph of a street scene. On the left, there is a grassy area with a chain-link fence and a large tree. A utility pole stands near the fence. The road is paved and leads into the distance, flanked by trees and a clear sky with some clouds. The text "Unwelcoming park edge" is overlaid on the left side, and "Little shade" is overlaid on the upper right side.

Little shade

Unwelcoming park edge



How can the park be open and welcoming everyday to the neighborhood?



Trees block views of lagoon

Grassy slope little used

Open up views and access to the Festival Beach lagoon to encourage use of sheltered water and potential beach.






Inadequate lighting

Path width 4'

Improve lighting throughout the park for safety, aesthetics, and sustainability.





Significant noise generator

Popular event venue

Locate events in the park to minimize noise and disturbance to surrounding neighborhoods.



How can roads be better integrated into the park landscape?



Shade structures as a focus of social activity



Improve park amenities, including shade structures, furniture, restrooms, emergency phones, and signs.





How can playgrounds be better integrated into the park landscape?



How can the Martin swimming pool be better integrated into the park landscape?

Preserve mural artwork that is valued by the community.





A popular swimming pool with possibility to broaden its appeal

Improve swimming facilities, including shade, sprinkler play, and better integration with the park landscape.





How can parking lots be better integrated into the park landscape?



Views to downtown

Little shade

Sparse planting



How can the park enhance the Martin School educational opportunities?



No sidewalk

Road width 32'

No sidewalk

Provide a connected pedestrian network of sidewalks, paths and trails, allowing ADA accessibility throughout the park.



A photograph of a landscape featuring two types of trees. In the foreground, several flowering trees with light-colored, gnarled trunks and dense clusters of bright pink blossoms are scattered across a grassy area. In the background, a dense line of mature, dark green shade trees forms a thick canopy. The sky is a clear, pale blue. The ground is covered with green grass and some fallen pink petals.

Shade trees

Flowering trees

A group of people are gathered in a park, enjoying a picnic under the shade of large, leafy trees. Several individuals are seated on folding chairs or on the grass, while others stand near a picnic table in the background. Red coolers are visible on the ground. The scene is dappled with sunlight and shadow from the trees.

Picnicking in the shade

A photograph of a wide, asphalt road stretching into the distance. On the left side of the road, there is a grassy area with a row of mature green trees. A tall, slender street light pole stands on the grass, with its arm extending over the road. On the right side of the road, there is a gravel shoulder followed by a wooden fence. Beyond the fence, there are several multi-story buildings, including a prominent one with a red and white facade. Power lines run along the right side of the road. The sky is blue with some white clouds. The text "Highway style lighting" is overlaid in white on the upper left, and "No sidewalk" is overlaid in white on the lower left and right sides of the road.

Highway style lighting

No sidewalk

No sidewalk



Poor lawn quality in areas of dense shade



View to community garden

Path width 5'

A photograph showing a dirt path on the left, a fence with a wire mesh and wooden posts in the middle, and a garden area on the right. In the background, there are trees and a city skyline under a cloudy sky. The text 'Informal path' is overlaid on the left side of the path.

Informal path

Visually open fence

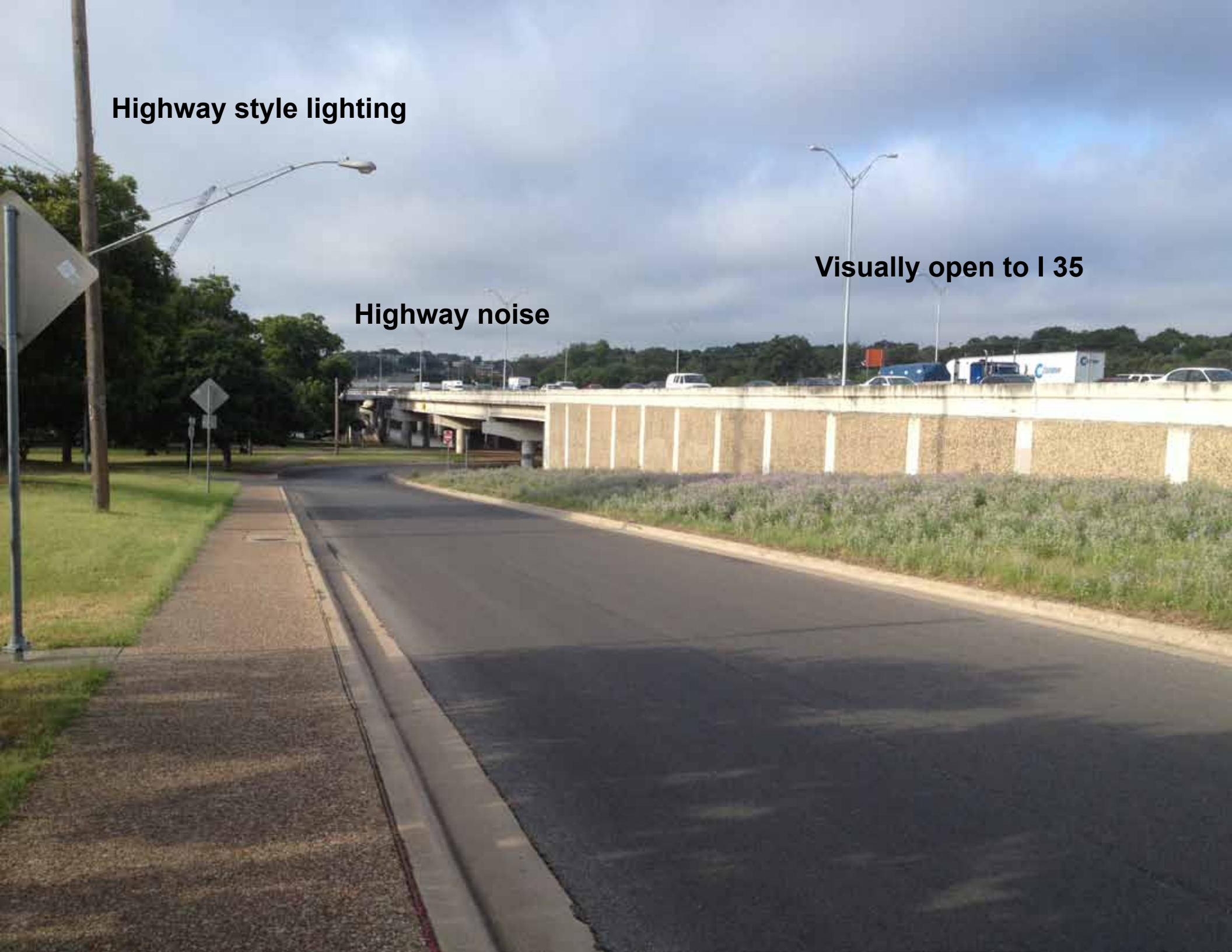
Festival Beach jardin comunal



Highway style lighting

Highway noise

Visually open to I 35





Pedestrian ramp to bridge

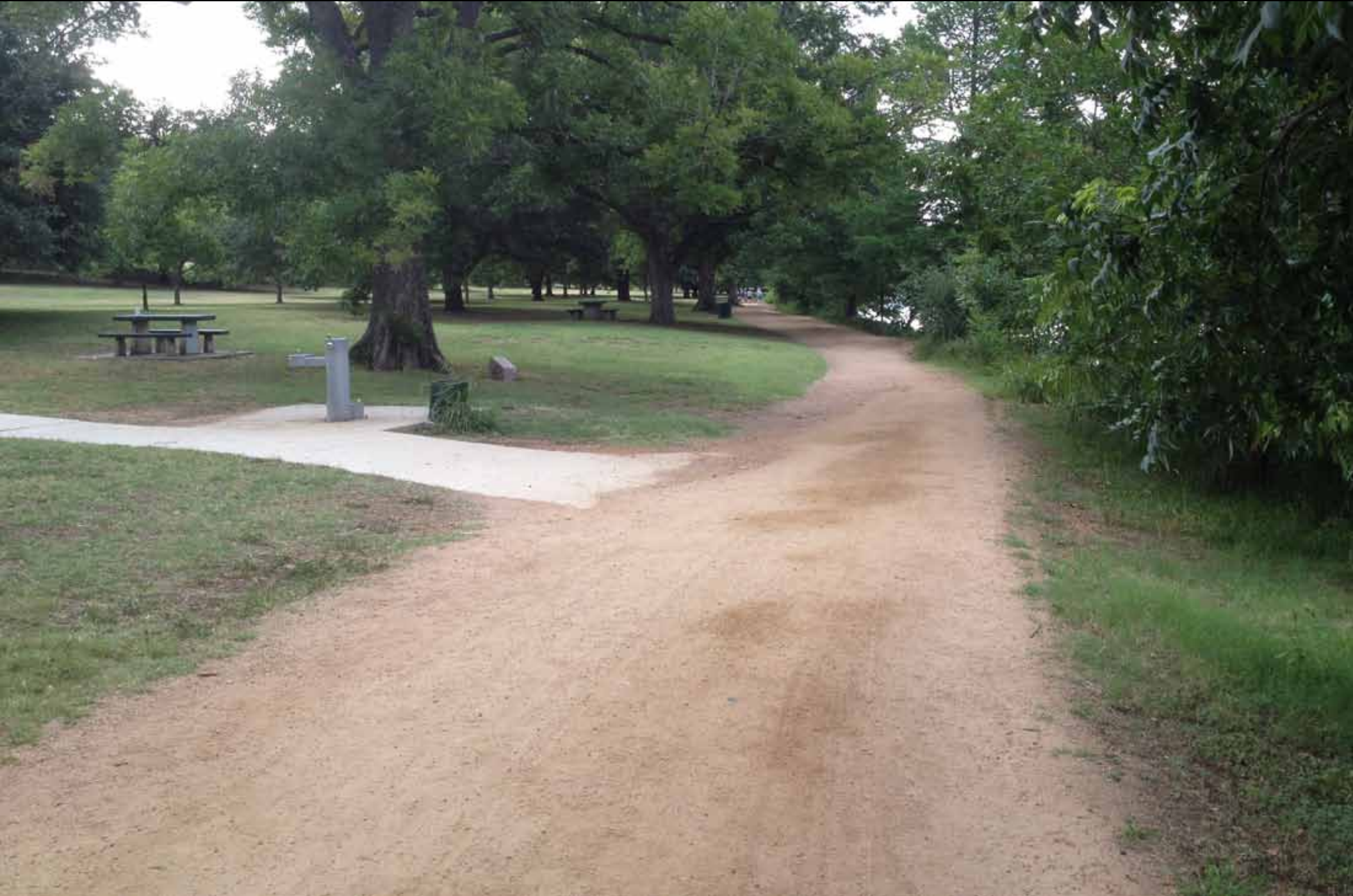
A photograph of a park scene. A wide, light-brown dirt path curves from the foreground towards the right. To the left of the path, there is a grassy area with several picnic tables and a drinking fountain. Large, leafy trees are scattered throughout the background and along the path. The sky is overcast.

Picnic table

Drinking fountain


Path width varies

Connect an ADA accessible multi-use trail for pedestrians and cyclists along the lake edge throughout the park.





Narrow riparian planting

A photograph of a park area next to a body of water. On the left, a black metal park bench sits on a sandy patch of ground under the shade of a large, mature tree. To the right of the bench, the ground is sandy and shows signs of being worn down. A dense line of green plants, including large-leafed aquatic species, grows along the edge of the water, forming a narrow riparian planting. The water is calm with some ripples and a few small logs floating near the shore. The background is filled with more trees and a clear sky.

Park bench

Grass worn from heavy use

Narrow riparian planting

Improve habitat quality along the lake edge, while allowing access to the lake for park users.





Pattern of sun and shade

Preserve existing green space within master plan area; improve natural habitat and park plantings.





No sidewalk

Road width 27'

No sidewalk



Grass slope with lake views

Integrate use of building and surroundings with park.





Boat ramp, lake access

A photograph showing a concrete storm water pipe discharging into a lake. The pipe is partially obscured by tall grass and other vegetation on the grassy bank. The water in the lake is blue with some ripples. The text "Storm water pipe at lake edge" is overlaid on the image in a bold, black font.

Storm water pipe at lake edge

Reconfigure storm water infrastructure to improve water quality, create habitat, and control storm water release to the lake.



A person is riding a bicycle away from the camera on a long, covered wooden bridge. The bridge has a dark brown metal frame with a series of horizontal slats forming a roof. The bridge is supported by wooden posts and has wooden railings on both sides. The bridge is situated over a body of water, which is visible through the railings. The surrounding area is lush with green trees and foliage. The lighting suggests it is daytime, with shadows cast across the bridge deck.

View to lagoon

View to lake



Historic grandstand

Richly planted edge

Sheltered water

Overhead power lines

Little shade

How can parking be better integrated into the park landscape?





Little shade

How can sports be better supported by the park landscape?

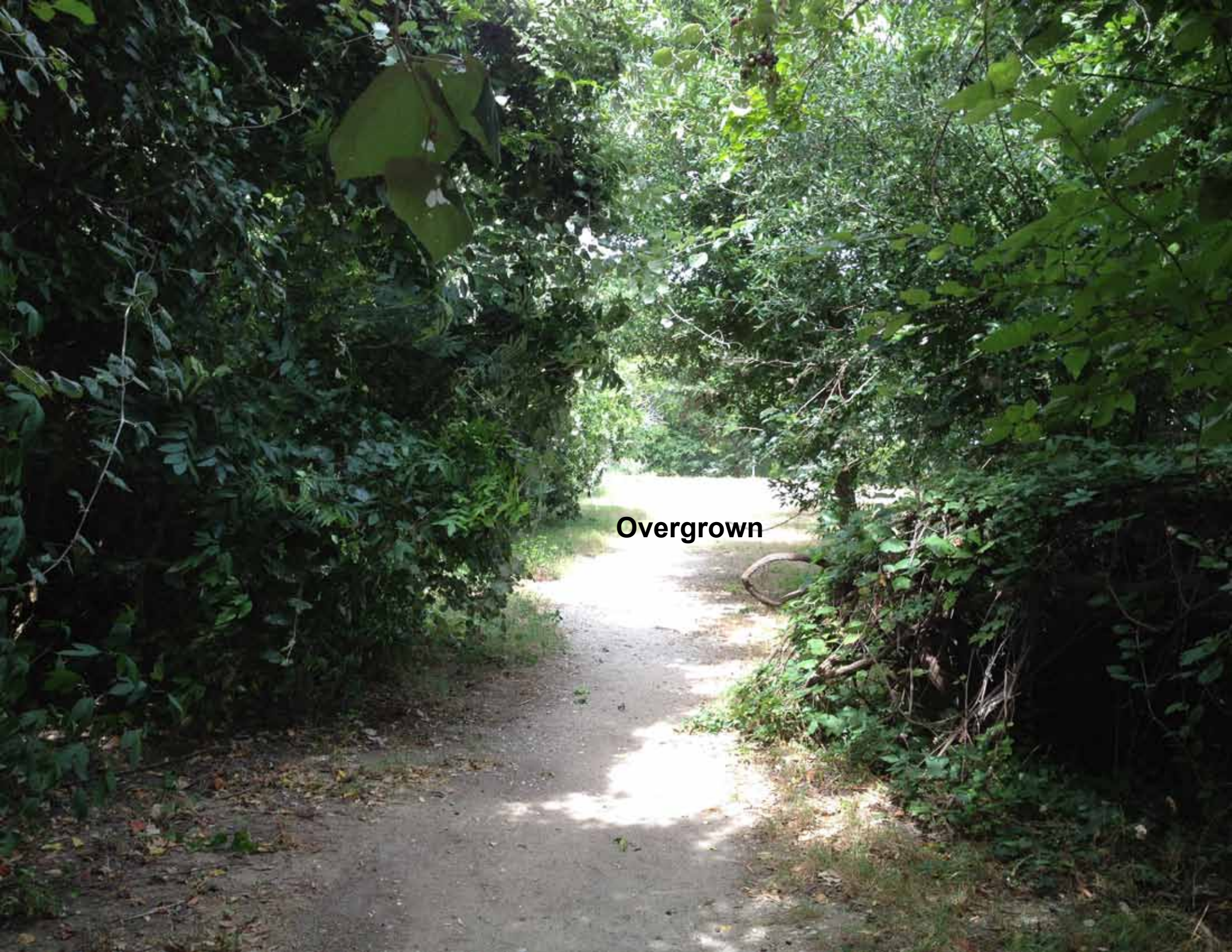


Informal path



Informal path

Lake view



Overgrown



Lake view

Create view points of the lake from the new park area.



**END OF
TRAIL**



Future park expansion area



Infrastructure at lake edge



Buildings to be repurposed



Recycle existing buildings to provide covered facilities in the new park area.





Buildings to be repurposed



Tank to be removed



Outfall structure to remain

Island





Overhead transmission lines

Future park expansion area

Establish a new park landscape including active and passive spaces, parking, and new park facilities on the land vacated by Austin Energy.



Entrance at Riverview Street

RIVERVIEW ST



A photograph of an industrial site, likely a power substation. In the foreground, a wide, light-colored gravel or dirt path leads towards the background. To the right of the path, a long, grey concrete wall runs parallel to the path. Above the wall is a chain-link fence. Behind the fence, several large, grey, rectangular transformers are visible, along with various electrical insulators and support structures. In the background, to the left of the wall, there are several orange and black storage containers or small trailers parked in a row. The sky is blue with scattered white clouds. The overall scene suggests a construction or maintenance project at a utility site.

Entrance at Riverview Street

Wall and transformers to remain

Neighborhood

History, Culture

Environment

Recreation

Family

