



Tree Canopy

Why measure tree canopy?

Canopy refers to a tree's aboveground layer of leaves, branches, and stems. When tree canopy density is high, we receive various benefits. These benefits include preventing flooding by intercepting rainfall and cooling our homes through shading among many other benefits. Monitoring tree canopy distribution is one way to measure the health of our urban forest over time and to ensure we continue receiving benefits.

What we have

The City of Austin digitally extracted tree canopy from aerial images flown in the summer of 2006. The image at top right shows dark red areas depicting tree canopy which was extracted into a Geographic Information Systems dataset shown in green at bottom right. This data was used to determine areas of high and low canopy cover throughout Austin. A 2010 canopy update is currently in the works, so stay tuned.

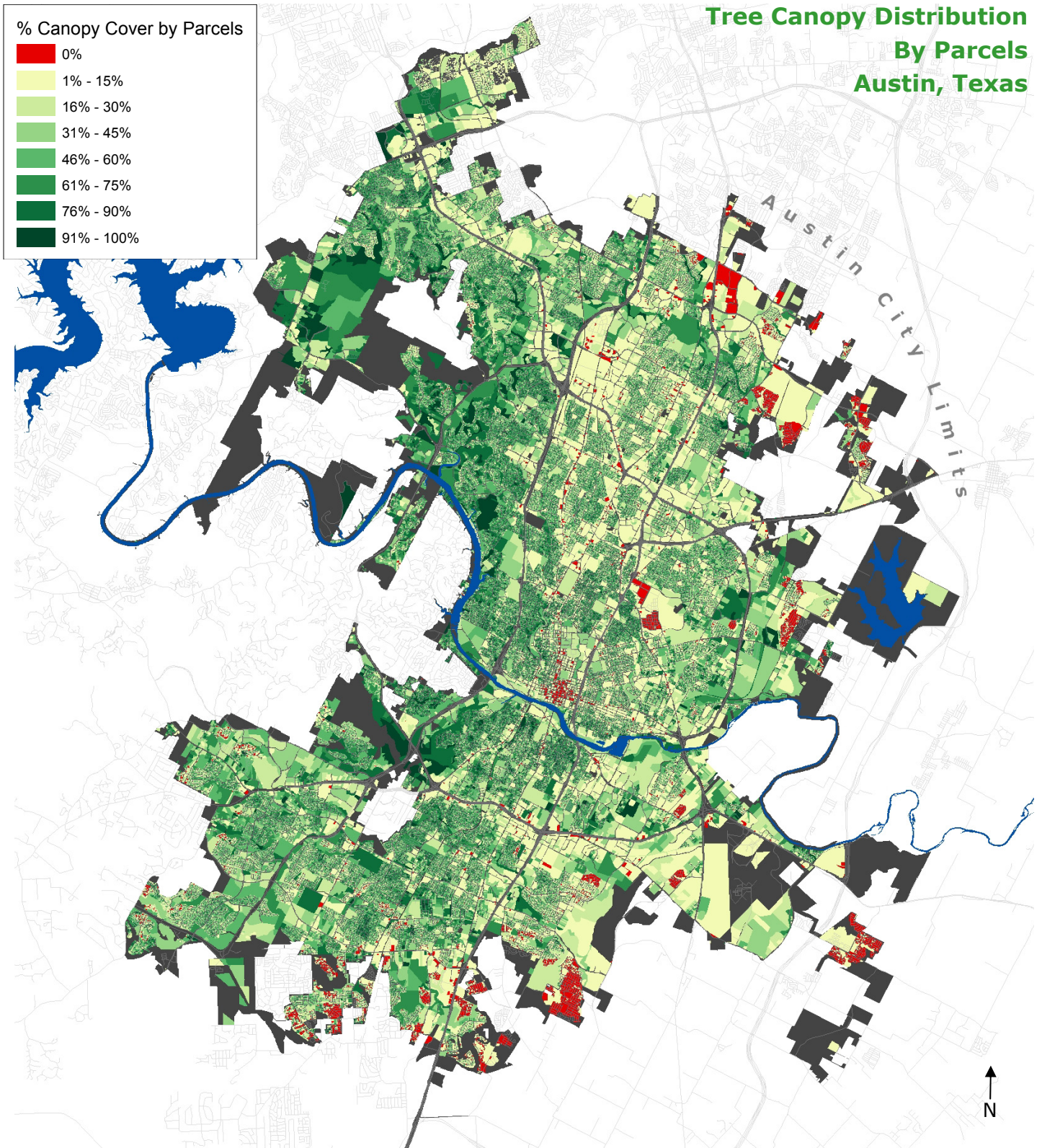
Colorinfrared image



Tree canopy data



Tree Canopy Distribution By Parcels Austin, Texas



This product is for informational purposes and may not have been prepared for or be suitable for legal, engineering, or surveying purposes. It does not represent an on-the-ground survey and represents only the approximate relative location of property boundaries. This product has been produced by the Parks and Recreation Department for the sole purpose of geographic reference. No warranty is made by the City of Austin regarding specific accuracy or completeness.

Further inquiries? urbanforestry@austintexas.gov
urbanforestplan@austintexas.gov
www.cityofaustin.org/parks
 April 26, 2013 Alan Halter

0 5 10 Miles