



ALLIANCE CHILDREN'S GARDEN

COMMUNITY ENGAGEMENT MEETING #1 • DECEMBER 5 2015

ENGAGEMENT SCHEDULE

DECEMBER 5, 2015

community engagement meeting #1

JANUARY 7, 2016

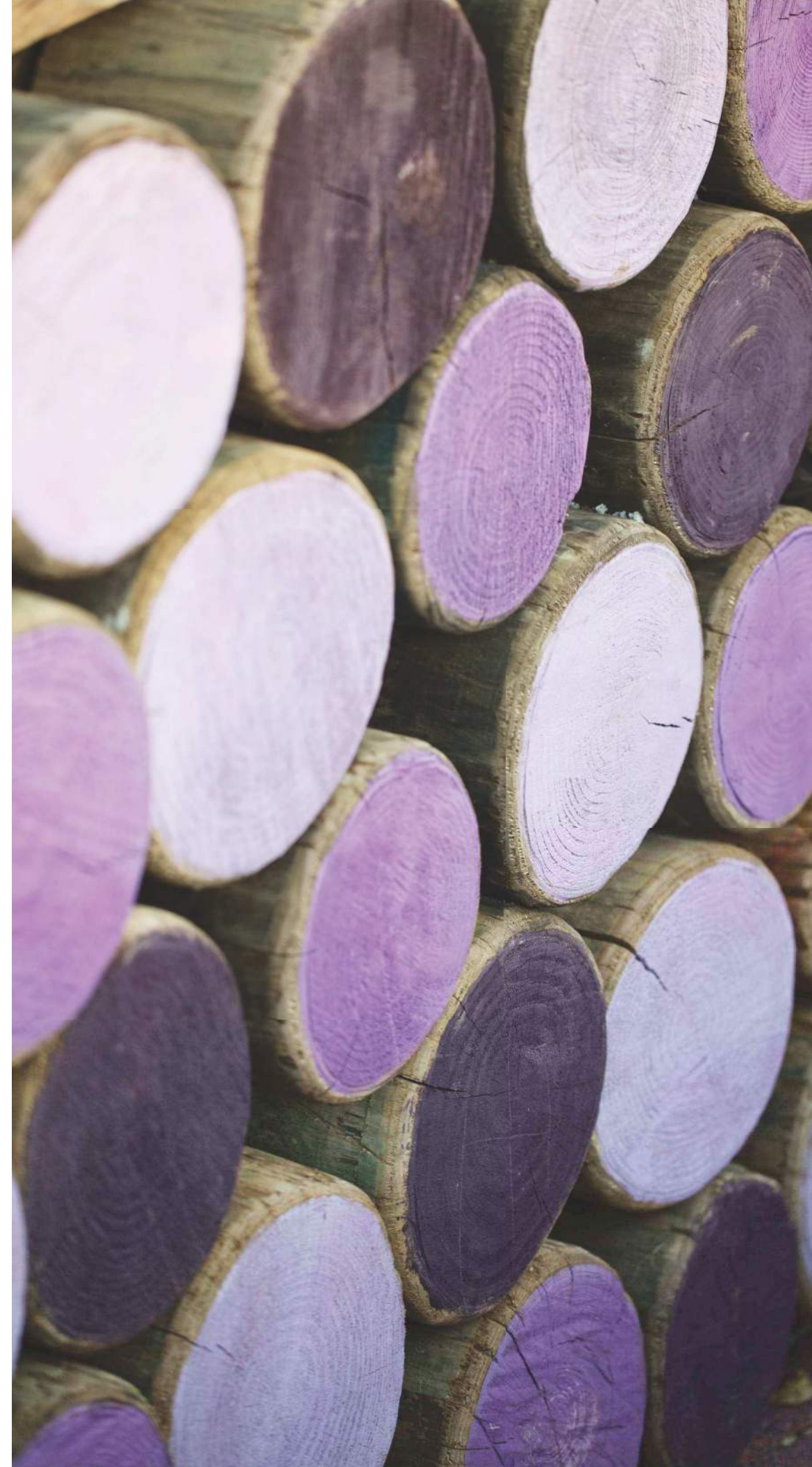
community engagement meeting #2

FEBRUARY, 2016

community open house

OTHER ENGAGEMENT OPPORTUNITIES

online survey, website, email, phone



PROJECT SCHEDULE

SPRING 2016

completion of design development phase
begin construction document phase

SPRING 2017

begin construction of garden

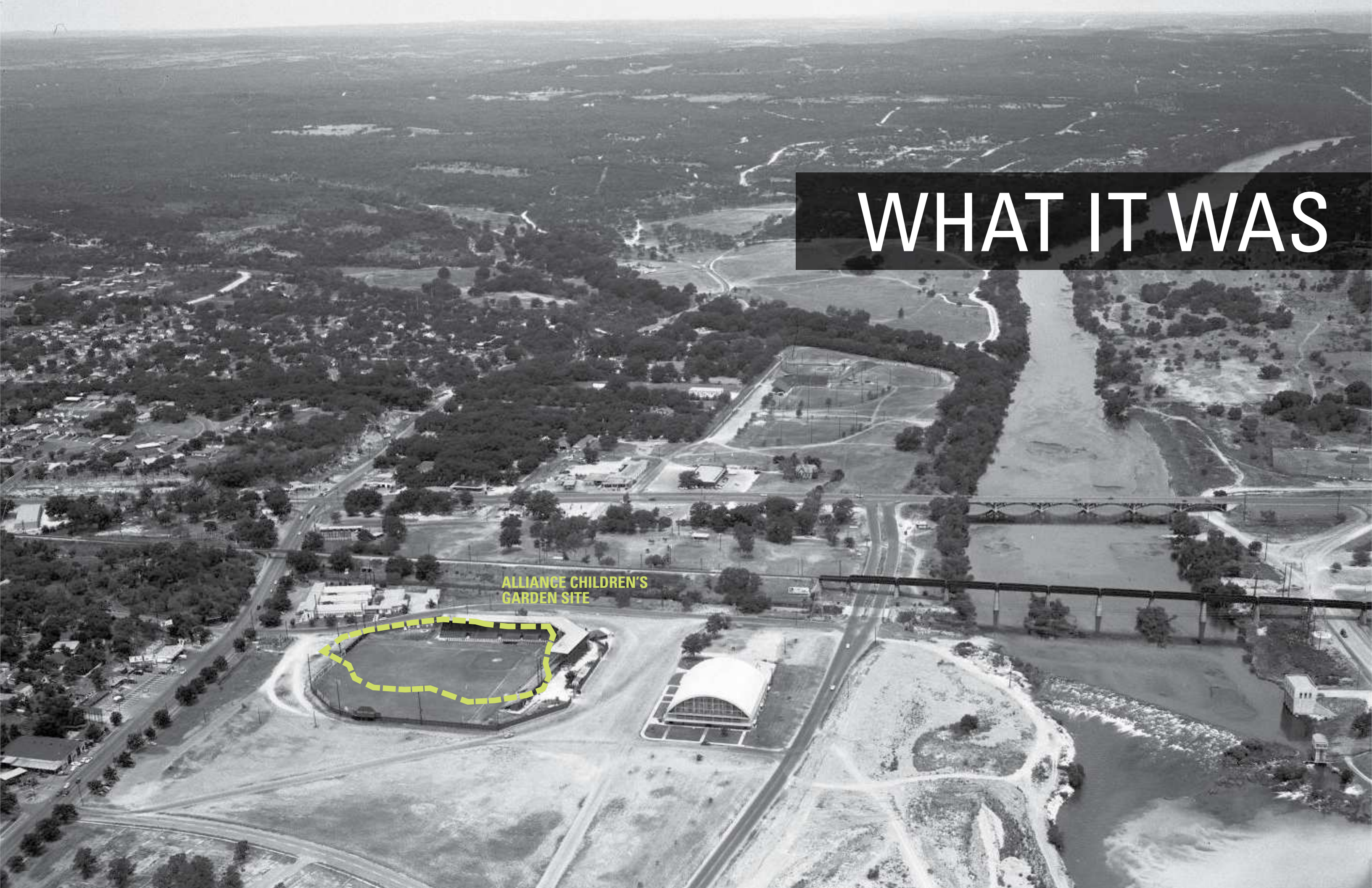
SPRING 2018

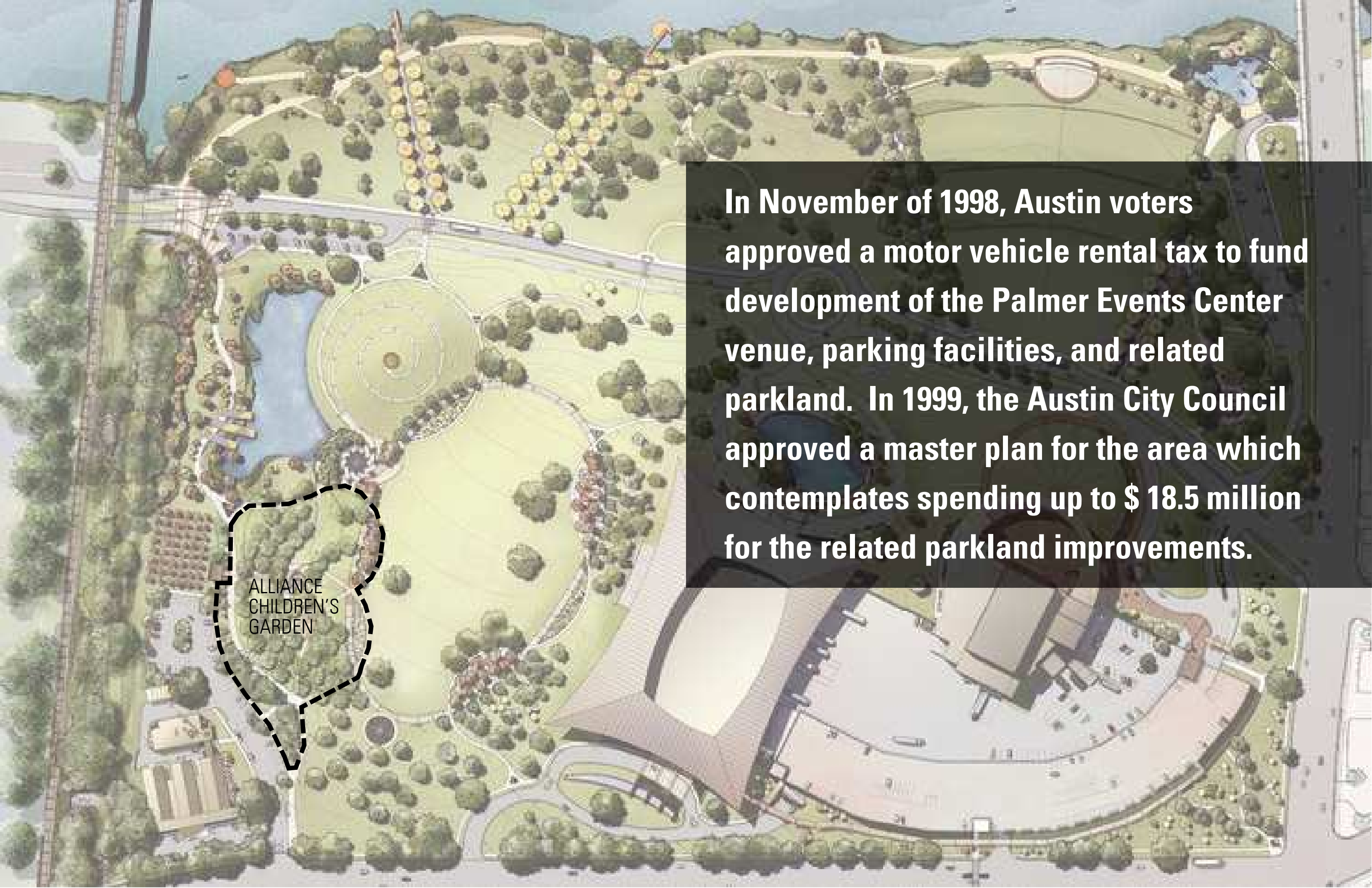
anticipated opening Alliance Children's Garden



WHAT IT WAS

ALLIANCE CHILDREN'S
GARDEN SITE





In November of 1998, Austin voters approved a motor vehicle rental tax to fund development of the Palmer Events Center venue, parking facilities, and related parkland. In 1999, the Austin City Council approved a master plan for the area which contemplates spending up to \$ 18.5 million for the related parkland improvements.

ALLIANCE
CHILDREN'S
GARDEN

DOUGHERTY ARTS
CENTER

ALLIANCE CHILDREN'S GARDEN
EXISTING SITE

WET POND

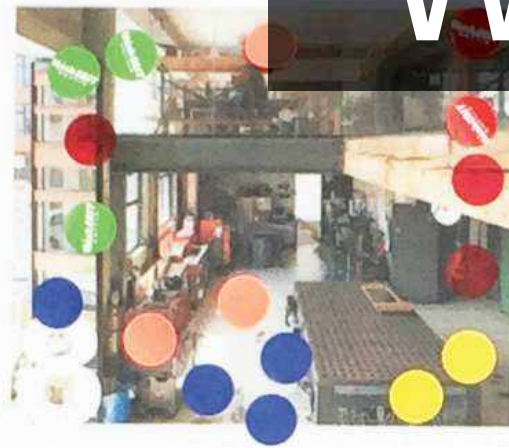
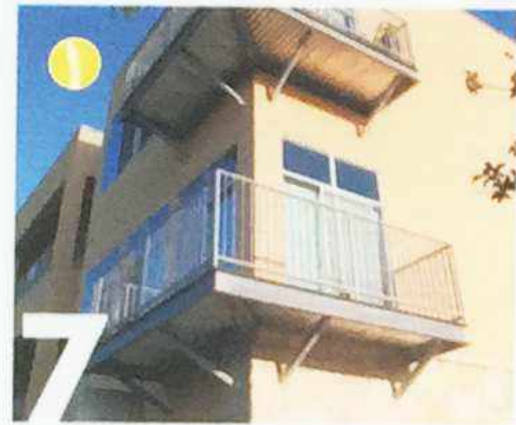
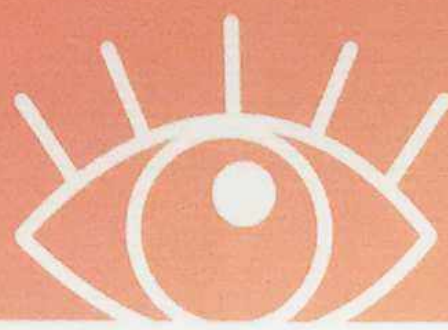
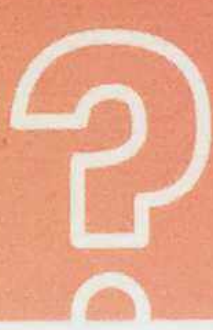
LIZ E. CARPENTER
FOUNTAIN

DOUG SAHM HILL

WILLIE WELLS FIELD

W RIVERSIDE DR





WHY WE'RE HERE

This place is to be a **children's garden** that will represent the unique **culture of Austin** through **contextual forms, imaginative play, playful elements, and strong aesthetics.**

The goal will be the creation of a **multigenerational** play venue that is **comfortable, inviting, imaginative, engaging** and **visually striking.**



WHERE WE'RE HEADED

EXPERIENTIAL PLAY



A photograph of a large, dark, layered rock wall, likely a natural rock formation or a man-made structure. The wall is composed of many thin, dark, rectangular layers stacked on top of each other, creating a textured, stepped appearance. In the foreground, two young children are walking on a paved path. The child in the foreground is wearing a light-colored t-shirt and shorts, and is looking towards the right. The child in the background is also wearing a light-colored t-shirt and shorts, and is looking towards the left. To the left of the path, there are green bushes and trees. The word "ICONIC" is overlaid in white text on a dark rectangular background in the upper right corner of the image.

ICONIC



URBAN



UNIFYING

A vibrant outdoor scene featuring a vast field of tall, thin metal poles planted in a green lawn. Each pole is topped with a large, colorful balloon in various shades including red, yellow, orange, teal, white, black, pink, and light green. The balloons are scattered across the field, creating a festive and whimsical atmosphere. In the background, modern city buildings and a white event tent are visible under a bright, slightly cloudy sky. A person is lying on their back on the grass in the foreground, and other people can be seen walking in the distance.

UNEXPECTED

WHAT'S IN AUSTIN NOW?



Brooklyn Bridge Park

location: Brooklyn, New York

size: 1.8 acre

type: play / community open space

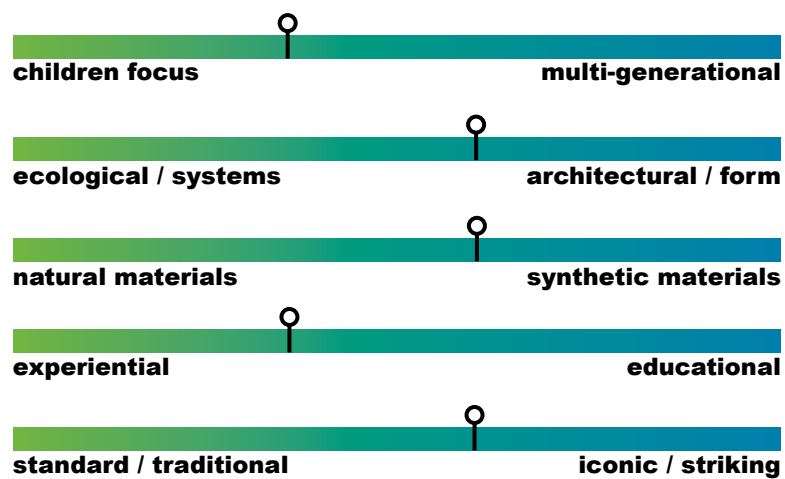
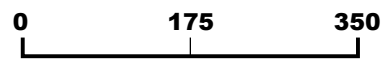
description:

Designed to be a community gathering area focused on childhood development and play. Meant to attract families and individuals year-round, and consists of picnic areas, seating, native planting, bikeway connection, dog run, and concession building with restrooms.

attributes:

- divided into sub-areas based on activities - Swing Valley, Slide Mountain, Sand Village, and Water Lab

- playgrounds are integrated into a landscape of hills, natural materials, and native plants









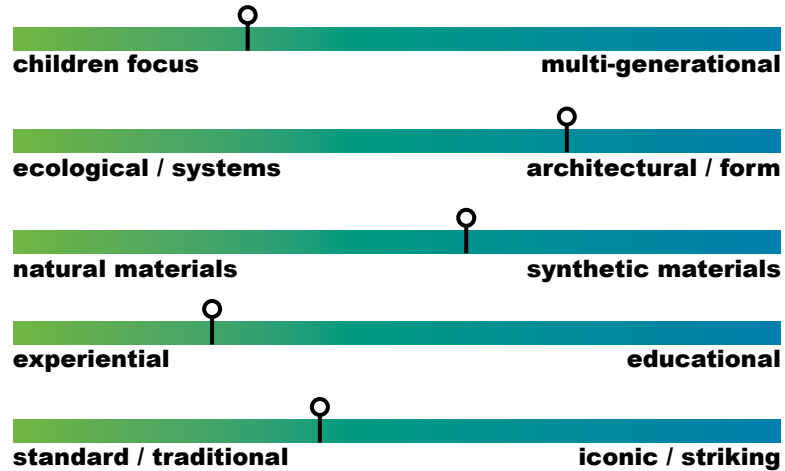
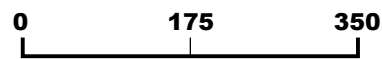
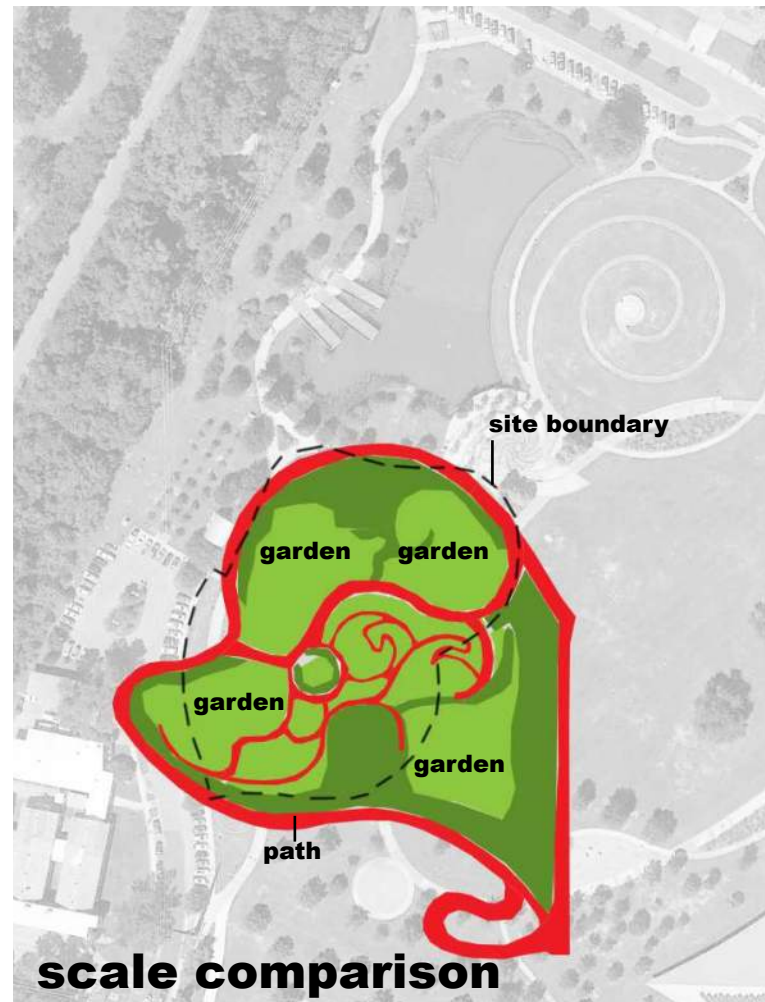


Maggie Daley Park Play Garden

location: Chicago, Illinois
size: approx. 3.25 acres
type: playground and park

description:
Places for multiple age groups for exploration, learning, and adventure. The garden is defined by topography and vegetation separating into different focused outdoor rooms.

- attributes:**
- mix of equipment based play and multifunctional landscape elements
 - diverse combination of planting and topography for exploration, defining edges of space, and screening
 - themed garden rooms focused on different experiences and physical challenges - 'the sea', 'the lighthouse', 'enchanted forest'











Woodland Discovery Playground

location: Memphis, Tennessee
size: 1.5 acres garden area
type: playground / restored woodland

description:
With a wooded context, here outdoor play promotes discovery, creativity, and interaction. The plan is organized by a series of programmed spaces connected by a covered walkway.

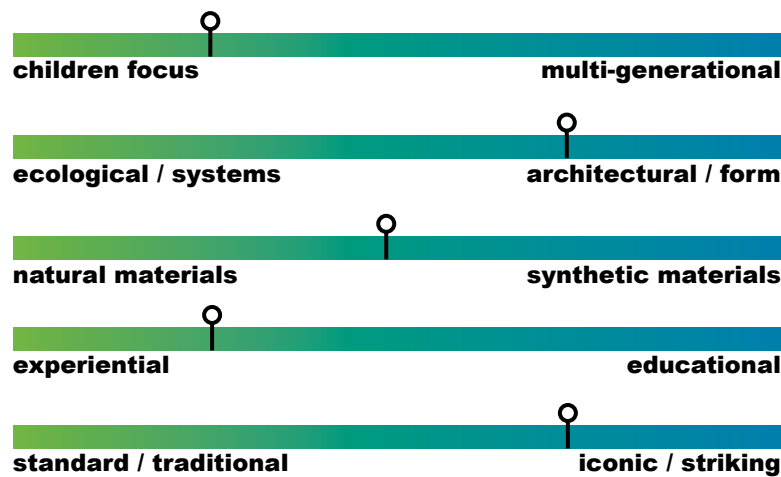
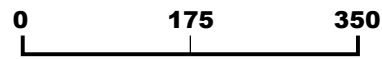
attributes:

- built on the desire for adventure, discovery, health, nature, fun and surprises

- winding arbor planted with native climbing plants and woody trees that frames the spaces

- series of outdoor rooms with different play experiences

- targeted different age groups, developmental abilities, and interests









DESIGN OBJECTIVES

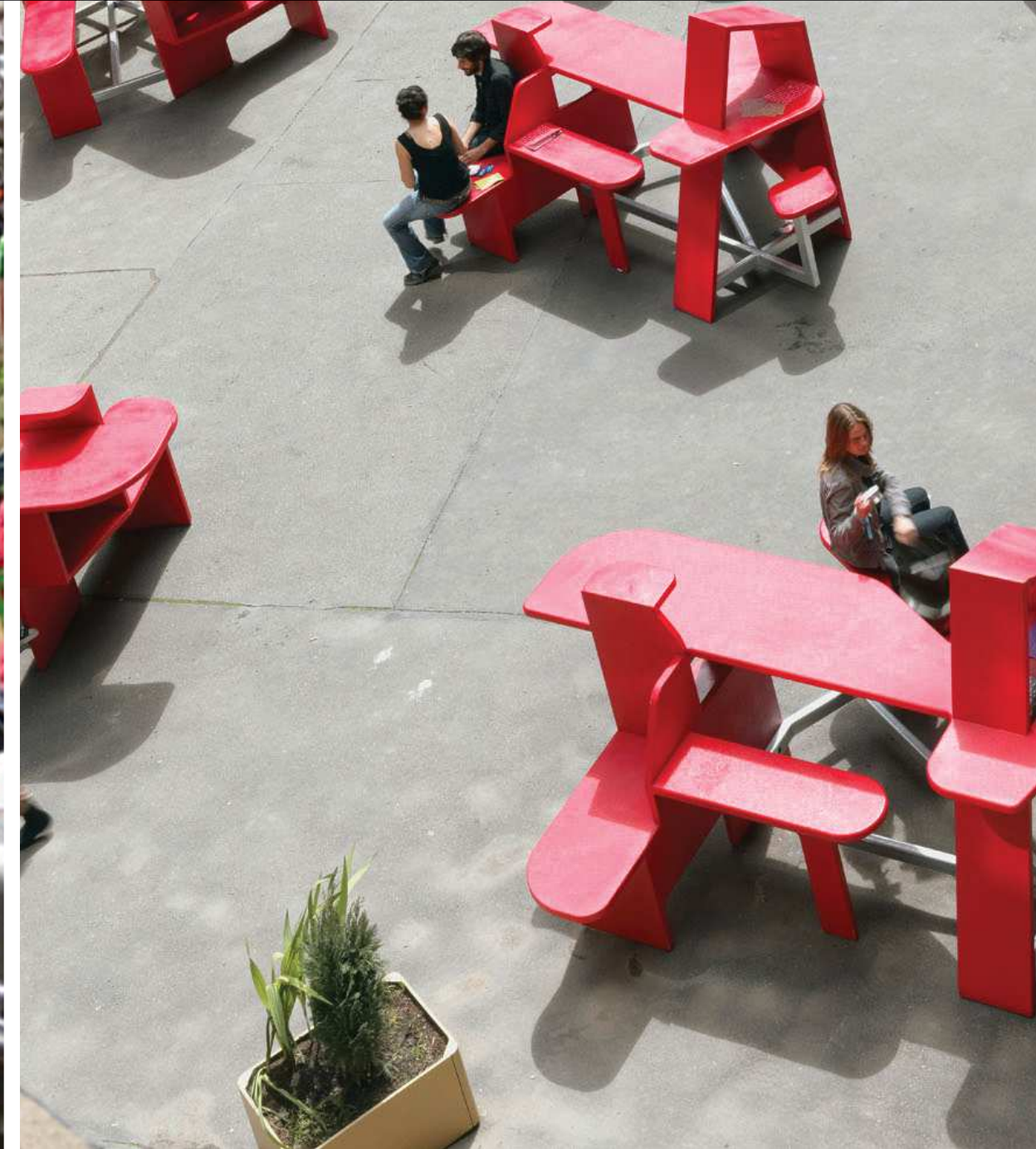
EXTENSION OF PLAY

provide a comfortable experience for both children and adults to extend the time spent in play





EATING, SITTING





ACTIVITIES FOR ALL AGES

SHADE



DESIGN OBJECTIVES



INCLUSIVE FOR ALL

although child-centric in focus, the garden will engage all ages, skill levels and physical capabilities



**ENGAGE ALL AGES,
ALL SKILL LEVELS**

CHALLENGE AND RISK



A group of four young girls are climbing a large, multi-level staircase made of stacked wooden logs in a park. The girls are wearing colorful clothing: one in a pink dress, one in a blue shirt and white shorts, one in a green tank top and purple shorts, and one in a yellow top and floral skirt. The background is filled with lush green trees and a clear blue sky. In the distance, a playground structure and a white car are visible. The text 'PHYSICAL VARIETY' is overlaid in white on a black rectangular background on the right side of the image.

PHYSICAL VARIETY

DESIGN OBJECTIVES

IMAGINATION DRIVEN

enable children to engage through active exploration and creative play to support physical, mental and sensory development capabilities





PRETEND PLAY



CREATIVE PLAY



SENSORY ACTIVITIES







A photograph of two young boys playing in a forest. One boy is standing on a large, fallen tree trunk, while the other is sitting on it. They are both wearing blue shirts and shorts. The background is filled with green trees and foliage. The text "LET'S PLAY!" is overlaid in the center of the image.

LET'S PLAY!