



## Dove Springs Recreation Center Expansion Project

Date: October 21, 12-1pm

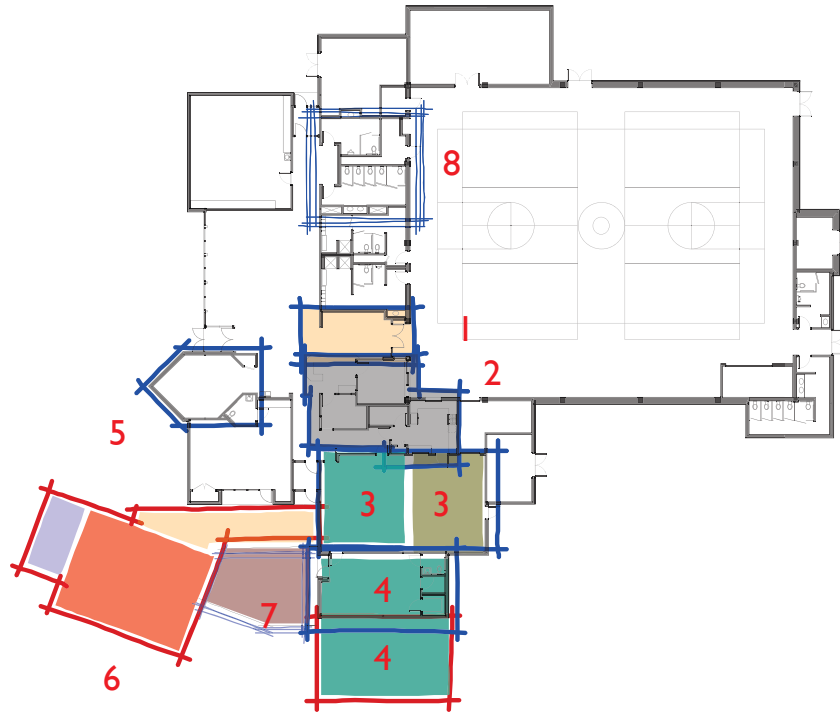
Location: Dove Springs Rec Ctr Multipurpose Room

### COMMUNITY UPDATE MEETING AGENDA

1. Progress update on Dove Rec Ctr Expansion Project
  - a. Schedule Updates (Kevin)
    - i. Nov. 2014 – Final community meeting with possible diagrams presented
    - ii. Feb. 2015 – Architect completes draft preliminary study with cost estimates
    - iii. Spring 2015 – PARC seeks supplemental grant opportunities, additional funding sources
    - iv. Summer 2015 – Architect presents new schemes, cost estimate analyses
    - v. September 2015 – Architect submits final preliminary report, alternative scheme
  - b. Next steps (David)
    - i. Finalize contract negotiation
    - ii. Move forward into design phase with scheme shown
    - iii. Design schematics posted at next project update
  - c. Introduce Art In Public Places opportunity (Carrie)
2. Other small projects & grants secured
  - a. APF – Fitness Equipment, \$50k match (Kevin, Ladye Anne)
  - b. APF – Slide Hill Feature, \$20k match (Kevin, Ladye Anne)
  - c. Nelson Puett Grant – Sportsfield Irrigation & Buildout, \$30k match (Kevin, Lucas)
    - i. Possible supplement from Neighborhood Partnering Program (Brian)
3. Impacts to Dove Rec Ctr as result of 2016 Budget (Lucas)



## Design scheme originally analyzed after outreach phase:



## NOTES

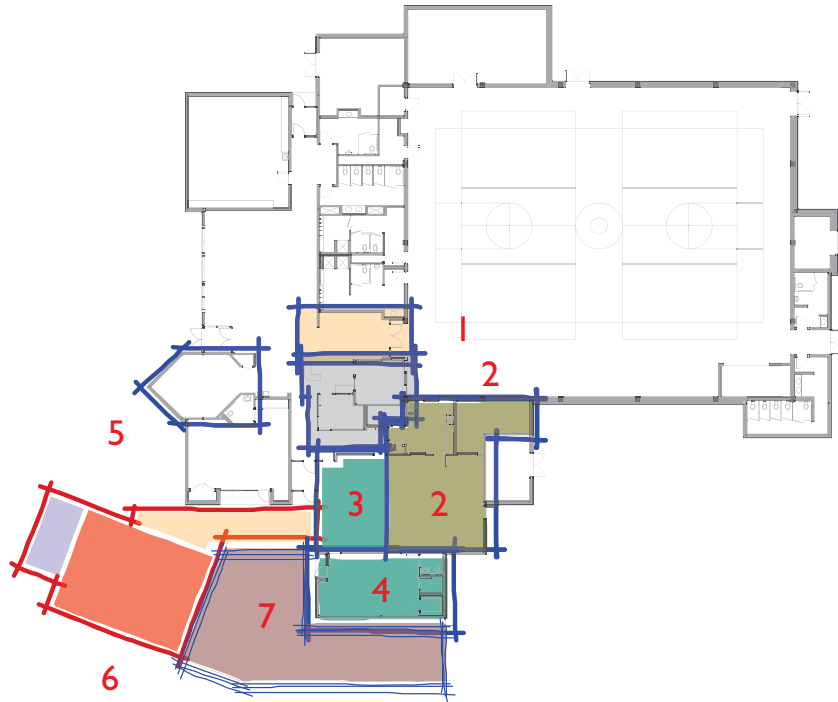
---

- 1** OPEN UP CIRCULATION AREA/REDUCE CONGESTION
  - Remove Vending Machines.
  - Relocate Check-out, check-in.
  - Mitigate noise from Lobby/Games.
- 2** REMOVE EXISTING KITCHEN, EXPAND OFFICES
  - Redesign control counter function.
  - Larger, better offices.
  - Window for check-in, check-out directly into gym.
- 3** CONVERT DANCE STUDIO
  - Instructional Kitchen
  - Multi-purpose program space
- 4** ENLARGE APD ROOM FOR TINY TOTS OR TEENS
- 5** CONVERT TELEVISION ROOM TO COMPUTER ROOM
  - Move TV to wall-mounted location in Lobby/Games.
  - Add door to secure computers.
- 6** NEW DANCE STUDIO
- 7** NEW COURTYARD
  - Paved, possibly shaded.
- 8** ACCESSIBILITY UPGRADES
  - Restrooms, protruding objects, reach range.

**SCHEME 3**

NOVEMBER 19, 2014

Design scheme currently being pursued:



## NOTES

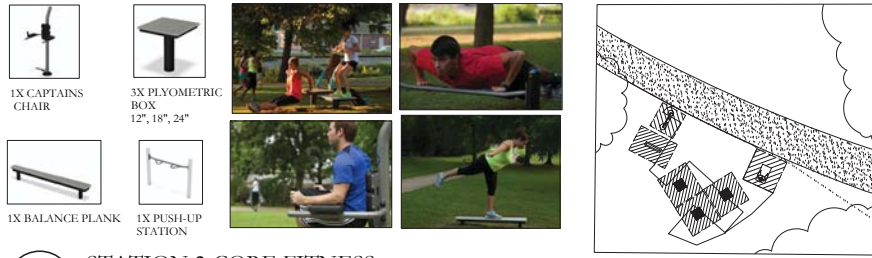
---

- 1** OPEN UP CIRCULATION AREA/REDUCE CONGESTION
  - Remove Vending Machines.
  - Relocate Check-out, check-in.
  - Mitigate noise from Lobby/Games.
- 2** EXPAND EXISTING KITCHEN, IMPROVE OFFICES
  - Redesign control counter function.
  - Instructional Kitchen.
- 3** DANCE STUDIO
  - Multi-purpose program space
- 4** CONVERT APD ROOM FOR TEEN ROOM
- 5** CONVERT TELEVISION ROOM TO COMPUTER ROOM
  - Move TV to wall-mounted location in Lobby/Games.
  - Add door to secure computers.
- 6** NEW DANCE STUDIO
- 7** NEW COURTYARD
  - Paved and shaded.

SCHEME 3a

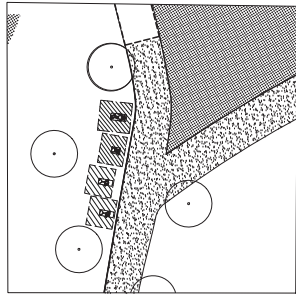
JUGUST 25, 2015

# Fitness equipment for installation on jogging trail:



**2** STATION 2-CORE FITNESS  
SCALE 1/16" = 1'-0"

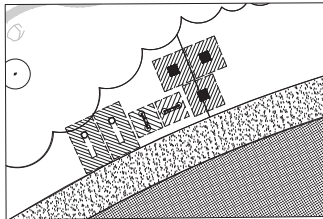
- LEGEND**
- BALANCE BOARD
  - BALANCE BLANK
  - FITNESS POMMELS
  - PLYOMETRIC BOX
  - RECUMBENT CYCLE
  - UPRIGHT CYCLE
  - HAND CYCLE/ACCESSIBLE HAND CYCLE
  - CHIN-UP STATION/PUSH-UP STATION
  - CAPTAINS CHAIR
  - ADULT CLIMBING WALL
  - PARALLEL BARS



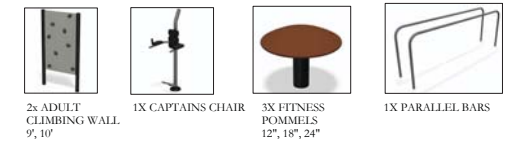
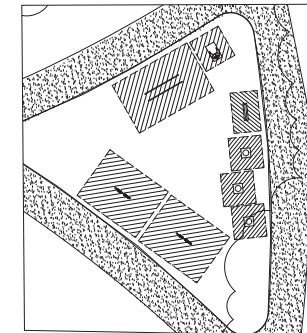
**FITNESS PLAN**  
SCALE 1" = 50'-0"



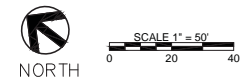
**3** STATION 3-AEROBIC FITNESS  
SCALE 1/16" = 1'-0"



**4** STATION 4-BALANCE/FLEXIBILITY  
SCALE 1/16" = 1'-0"



**1** STATION 1-MUSCLE FITNESS  
SCALE 1/16" = 1'-0"

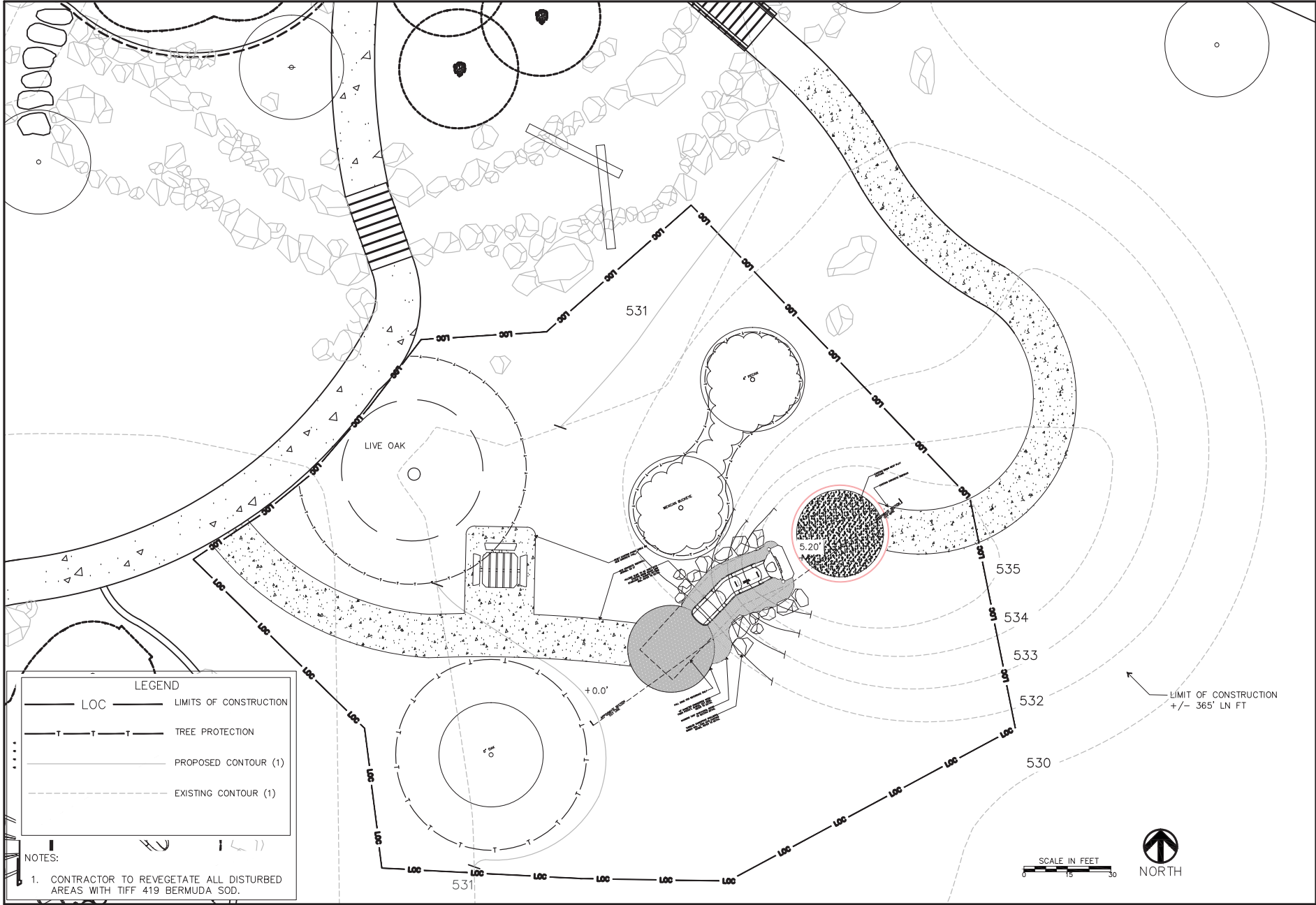


DIRECTOR Sara Hensley	ASSISTANT DIRECTOR Marty Slump	REVISIONS
DIVISION MANAGER Marty Slump		
PARK DEVELOPMENT COORDINATOR Marty Slump		APPROVED
LANDSCAPE ARCHITECT Marty Slump		DRAWN BY: CK

**DOVE SPRINGS FITNESS PLAN**  
5801 AINEZ DR.  
AUSTIN, TX 78744

SCALE	AS NOTED
DATE	07/16/15
SHEET 1 OF 1	

# Slide Hill for installation at Bird's Nest:



LEGEND	
	LOC LIMITS OF CONSTRUCTION
	TREE PROTECTION
	PROPOSED CONTOUR (1)
	EXISTING CONTOUR (1)

NOTES:

- CONTRACTOR TO REVEGETATE ALL DISTURBED AREAS WITH TIFF 419 BERMUDA SOD.

DIRECTOR	ASSISTANT DIRECTOR	REVISIONS
Sara Henley	Marty Shump	
DIVISION MANAGER		APPROVAL
Marty Shump		ID
LANDSCAPE ARCHITECT		DRAWN BY
Marty Shump		CR

## DOVE SPRINGS DISTRICT PARK - SLIDE HILL PROPOSED IMPROVEMENT PLAN

SCALE	1:10
DATE	06/19/15
SHEET	L1
3 OF 6	