

# VETERANS PARK

STAKEHOLDER MEETING 1  
SEPTEMBER 14, 2017



DESIGNWORKSHOP

# AGENDA

**Introduction**

**Project Background and Scope**

**The Monuments**

**Site Inventory and Analysis**

**Goals Discussion**

**Programming**

**Visual Preference Survey**

**Questions**



# MEET YOUR TEAM

The purpose of tonight's Veterans Park meeting is to present:

Background information

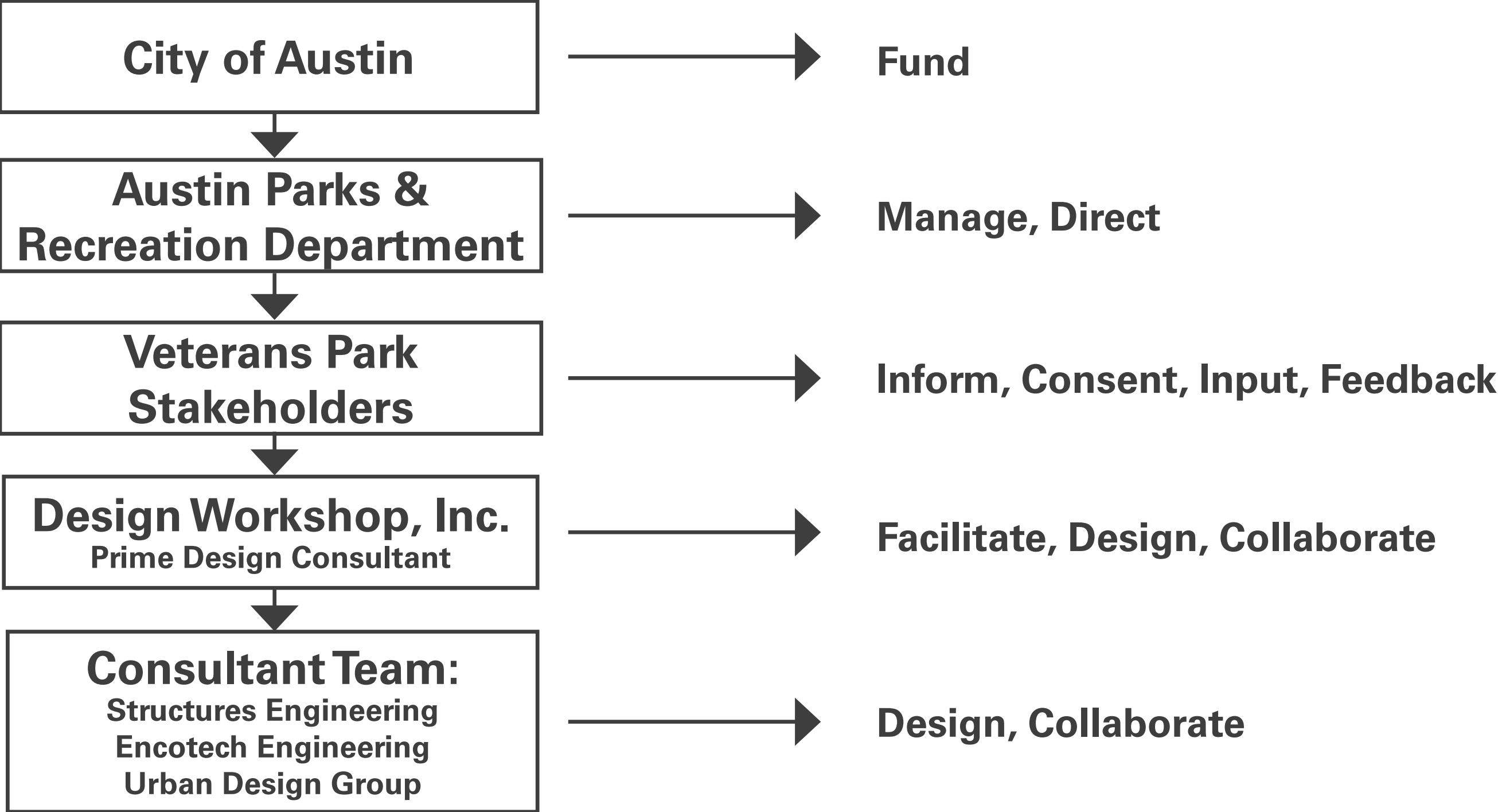
Existing conditions

Preliminary goals

And to gather stakeholder input to inform the design of the space.



# TEAM EXPECTATIONS AND ROLES



# **PROJECT BACKGROUND**

**The 2012 Bond initiative provides funding to design space for these memorials and future memorials at Veterans Park**

**Veterans Park is physically connected to the American Legion Post 76, although not administered as one site**

**The Post is not part of the City of Austin's Park and Recreation Department**

**Site will contain three war memorials previously located at Waterloo Park that honor the:**

- Korean War**
- Vietnam War**
- the Hostile Action in Beirut**

# **SCOPE**

**Accommodate formal and informal veterans events and observances as well as casual use by the public**

**Plan for potential future memorials**

**Work with the City of Austin Commission on Veterans Affairs to plan for the needs of the local veterans community**

**Work with the adjacent American Legion Post 76 to create a seamless and strong relationship between the park and the existing circulation, retaining wall, flagpoles and structure**

**Maximize accessibility and connect to surrounding context**

**Utilize the existing concrete sidewalk on Veterans Drive and plan for connectivity to the nearby Capital Metro bus stop and the Roy and Ann Butler Hike and Bike Trail**

**Address the drainage catch basin area on site**

**Develop and prepare conceptual, schematic, design development and construction documents**

# THE MONUMENTS | Korean War



IMAGES FROM ORIGINAL LOCATION AT WATERLOO PARK

# THE MONUMENTS | Vietnam War



**Dedicated May 26, 1980**

IMAGE FROM ORIGINAL LOCATION AT WATERLOO PARK



# THE MONUMENTS | Hostile Action in Beirut



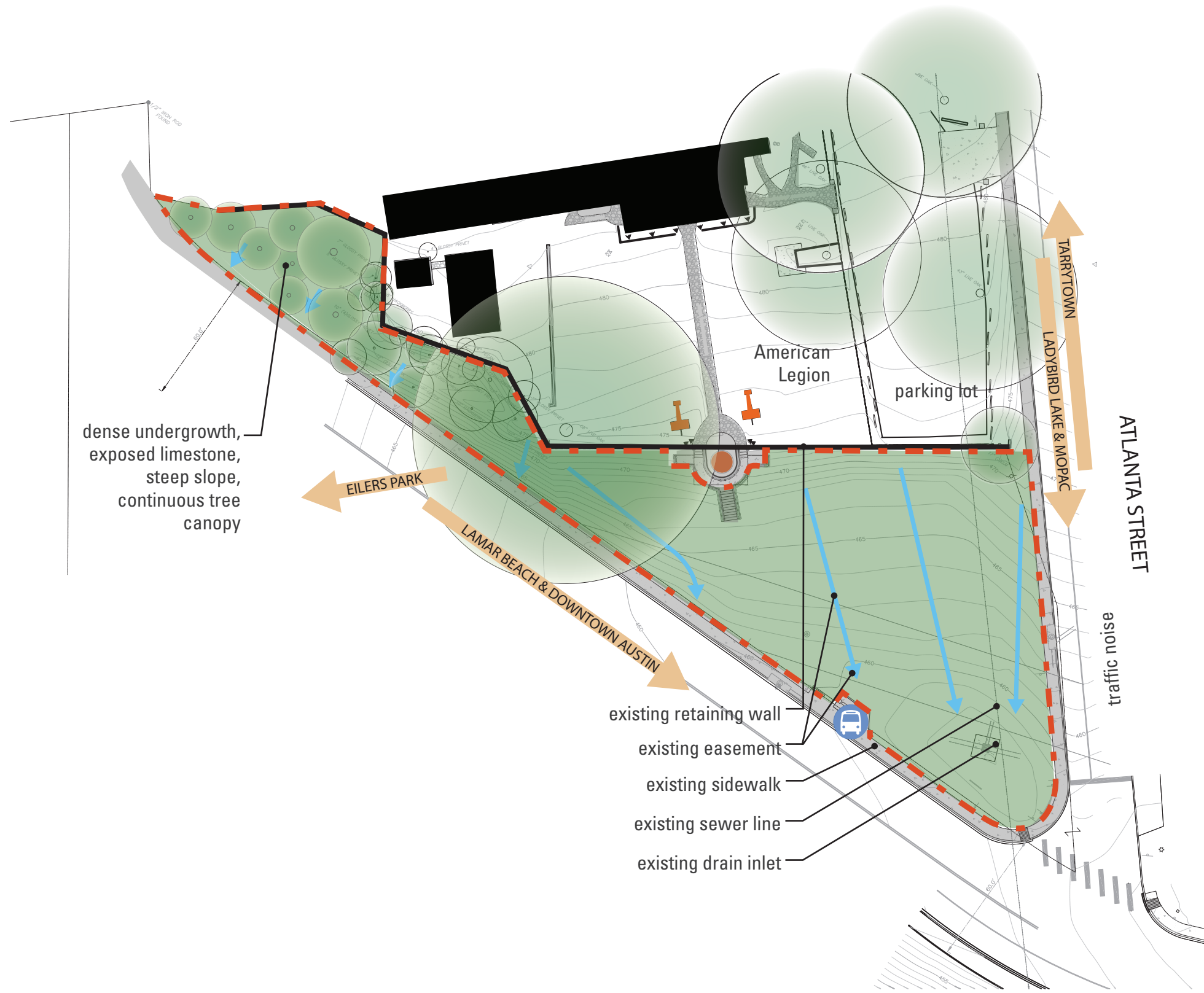
**Dedicated May 28, 1984**

IMAGE FROM ORIGINAL LOCATION AT WATERLOO PARK

# CONTEXT



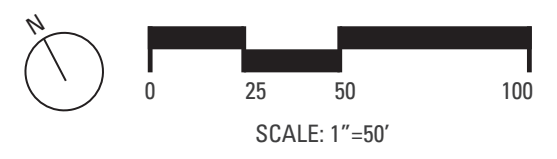
# SITE INVENTORY



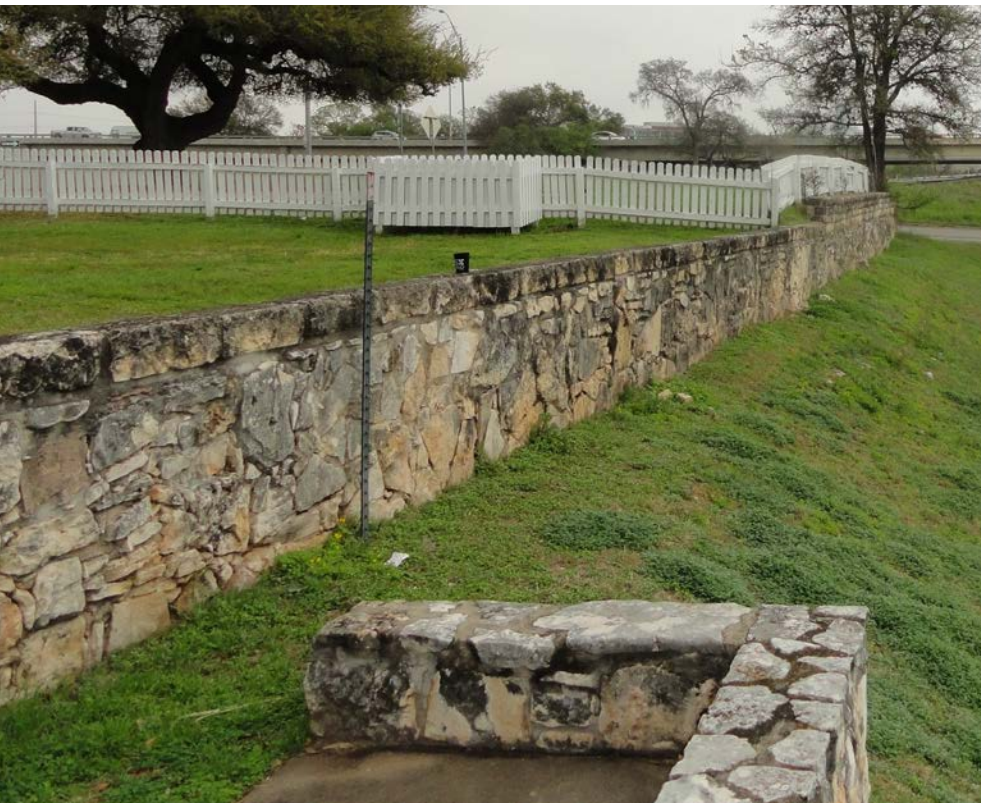
- ## Key Takeaways:
- Potential connections
  - High noise levels
  - Visibility to surroundings
  - Drainage and slope

### LEGEND

- SITE BOUNDARY
- BUILDING
- PAVING
- TRAFFIC
- WATER FLOW
- EXISTING CANNON MONUMENT
- EXISTING FLAGPOLE



# SITE INVENTORY



RETAINING WALLS



STAIRS TO AMERICAN LEGION



FLAGPOLE LOCATION



LAWN SPACE



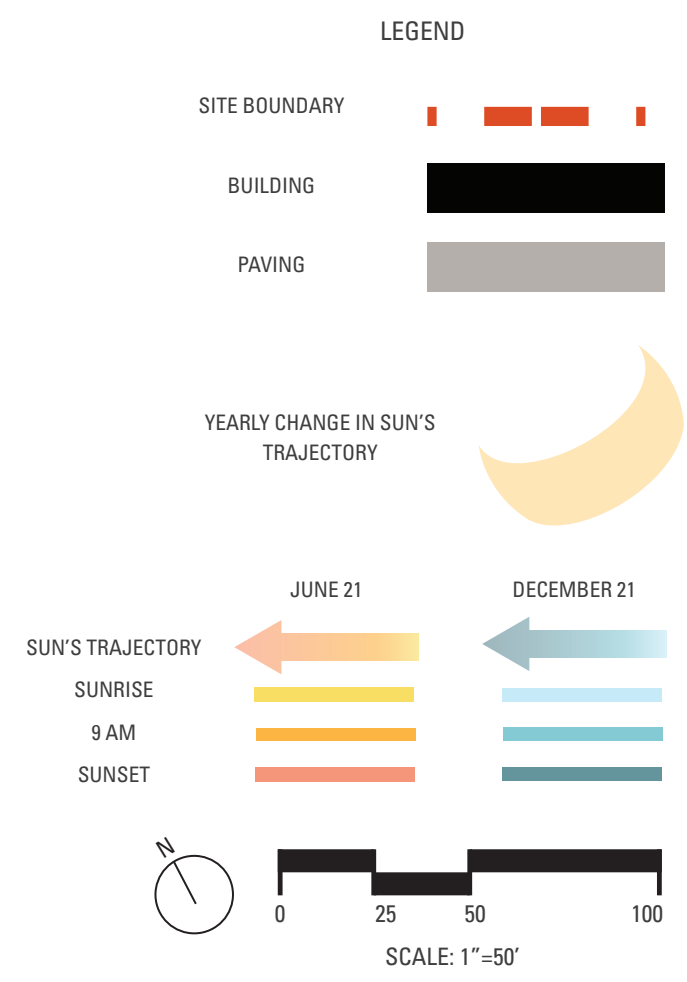
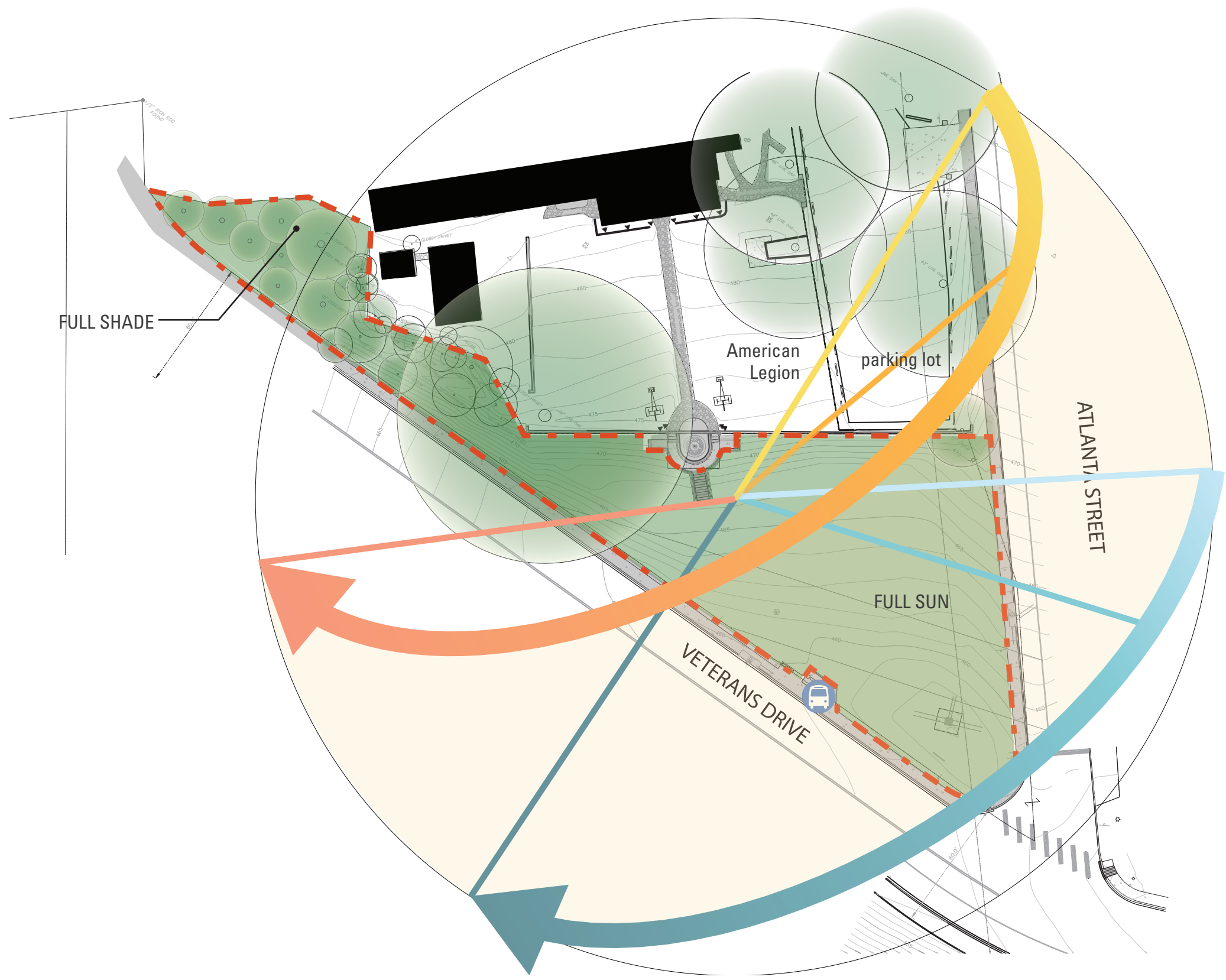
PATH CIRCULATION



TREES

# SITE ANALYSIS

- Key Takeaways:**
- Lack of shade and vegetation
  - Low human comfort
  - View of American Legion & Lady Bird Lake tree canopy



# PROJECT GOALS

## Memorials

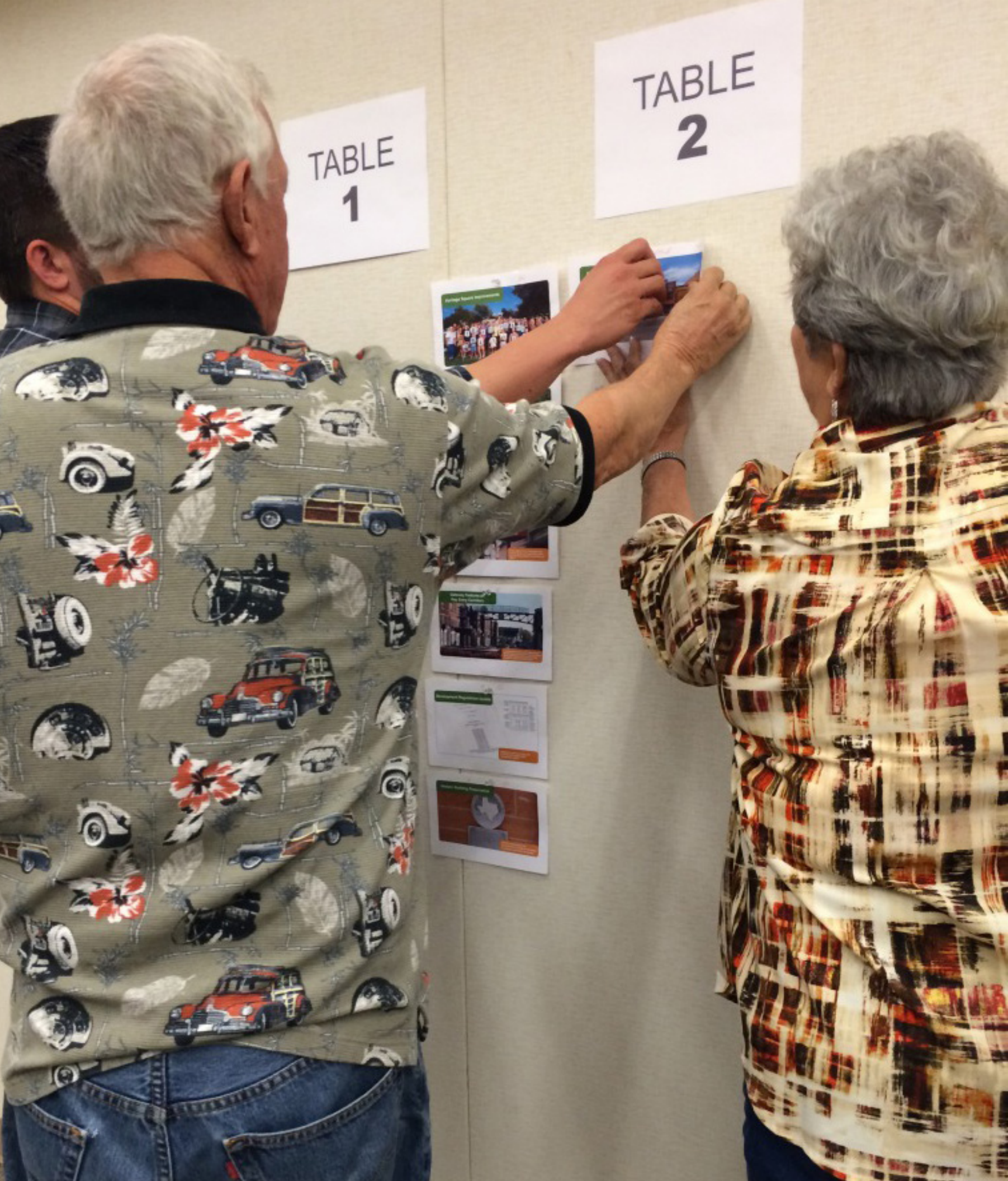
In what way should the memorials be located?  
How does the space around the memorials feel?

## Experience

What is your experience like when you're at the park?

## Use

How should the park be used?  
Where can you enter the park?



# PROGRAMMING + USE

**Active**

**Passive**

**Daytime**

**Nighttime**

**Everyday**

**Special Event**

**Informal**

**Formal**

**Individual**

**Group**

**Reflective**

**Stimulating**



# AESTHETIC STYLE



**MODERN**



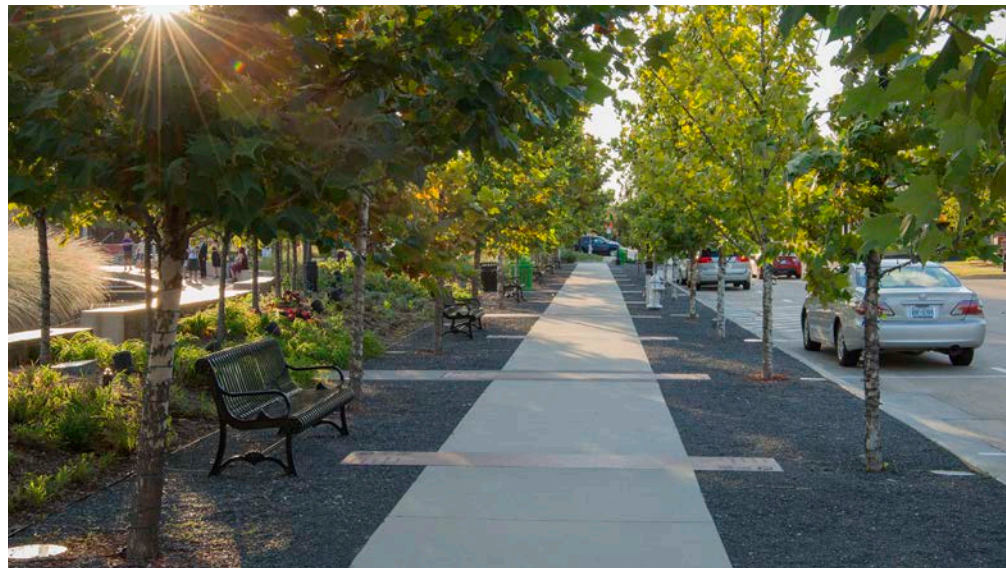
**COUNTRY / RUSTIC**



**CLASSIC AUSTIN**



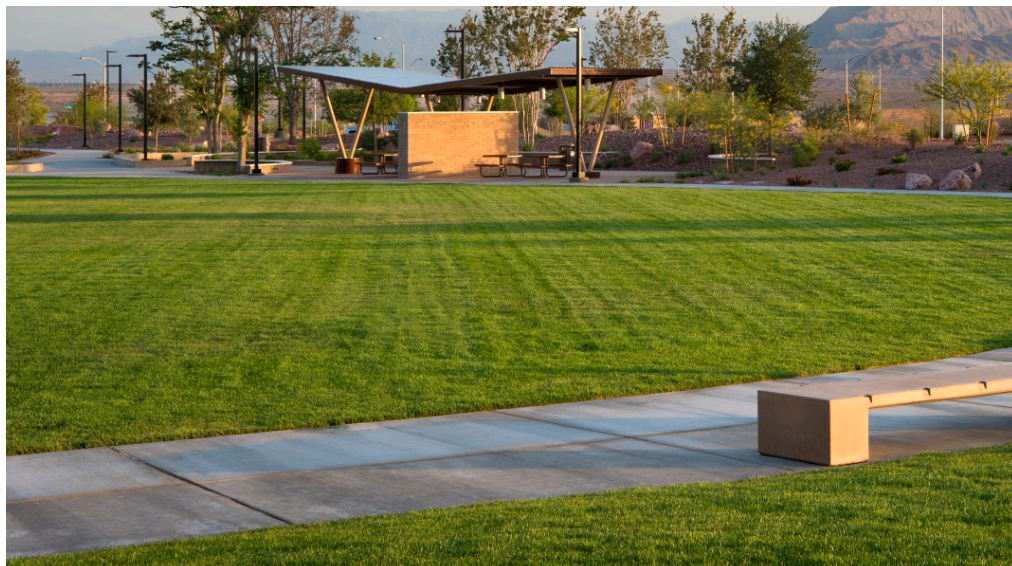
**CIVILIAN CONSERVATION CORPS (CCC)**



**FORMAL**



**CURVILINEAR**



**OPEN**



**NATURAL**



**REFINED**



# MATERIALS



DECOMPOSED GRANITE



CONCRETE



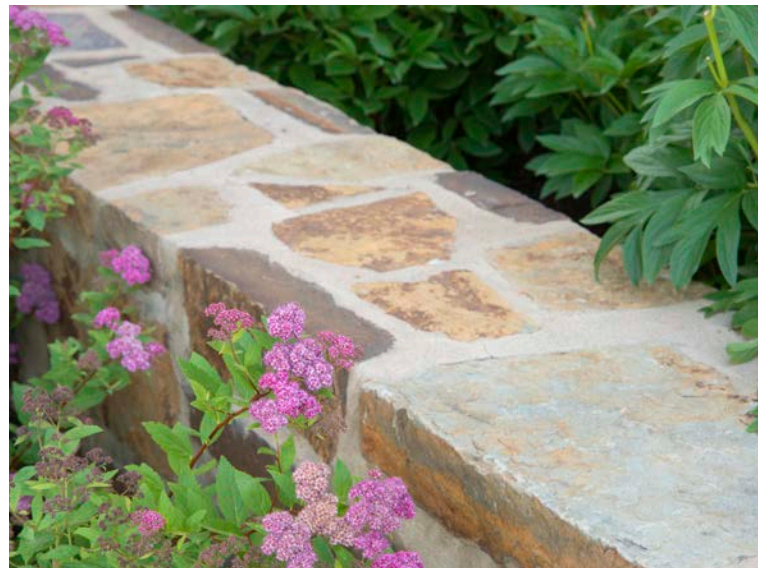
BOARD FORM CONCRETE



CORTEN STEEL



STAINLESS STEEL



IRREGULAR STONE



REGULAR STONE



LARGE BOULDERS



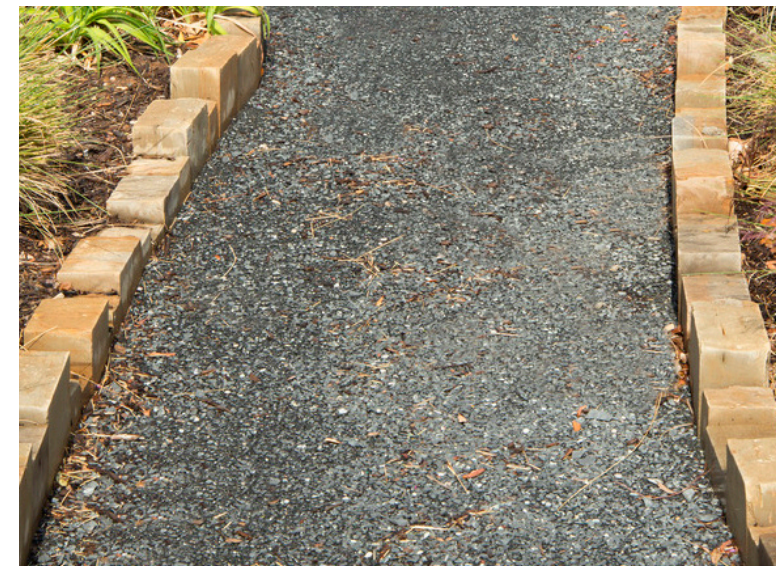
PAVERS



COLORED CONCRETE



WOOD OR SYNTHETIC WOOD



GRAVEL

# THANK YOU FOR YOUR INPUT!

Additional questions or comments?

Contact Rey Hernandez

or

visit the project website at

<http://www.austintexas.gov/department/veterans-park-plan>