



Eilers Park - Community Input Meeting 1



Why are we here?

The purpose of tonight's meeting is to:

- 1. Present background information and current plans for Eilers Park**
- 2. Present preliminary goals for Eilers Park**
- 3. Gather community feedback to inform the Eilers Park redesign**

Agenda

Introduction
Project Background and Budget
Site Inventory
Site Analysis
Design Goals
Project Examples
Keypad Polling
Question and Answer Period



Project Background

1902 - Deep Eddy Bathing Company was opened as a private swimming and recreation center

1915-1916 - Deep Eddy was purchased by A.J. Eilers and developed as a resort complete with a concrete swimming pool

1935 - The City of Austin purchased the five acre Eilers Park surrounding Deep Eddy and built the existing rock bathhouse.

Late 1970s - The existing picnic tables were installed in the Park.

Late 1970s/early 1980s - The existing accessible ramp between Eilers Park and Deep Eddy Pool was constructed.

1990s - The existing playground equipment was installed

2012 - Deep Eddy Pool was renovated by PARD and Design Workshop

Project Background

- Existing amenities include a play structure, barbecue grills, picnic tables and small contained open space areas;
- Landscape beds and plant material are minimal and in poor condition;
- PARD anticipates removal of existing play structures and park amenities, including barbecue grills, picnic tables, benches, shade structures, landscape edging, railings within the improvement area, play surface material such as engineered wood fiber and retaining walls and features constructed of wood members;
- The total construction budget for Park improvements, including demolition, mobilization, materials and installation, is \$363,000.

AIPP / Entry Sign

Selected Artists: Ryah Christensen + Sun McColgin

This team showed a great amount of experience through numerous media which can be used in this commission. We felt their experience and knowledge will allow for meaningful collaboration with the design team.

- Selection Panel Comments



Existing Entry Sign



Reflections on the Brazos (2015)
by Ryah Christensen

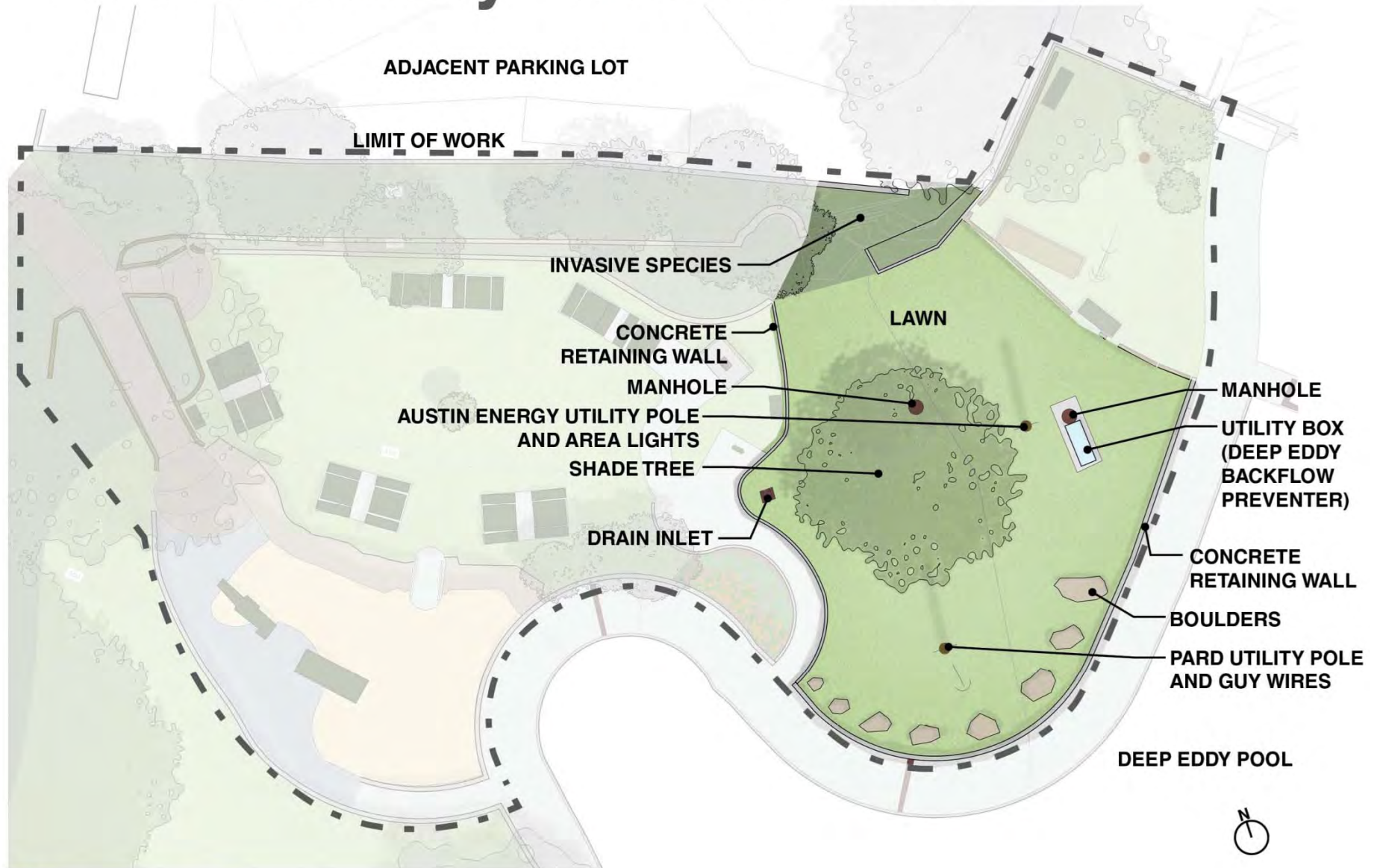


Invisible Womb (2013)
by Sun McColgin

Site Inventory - Entry Terrace



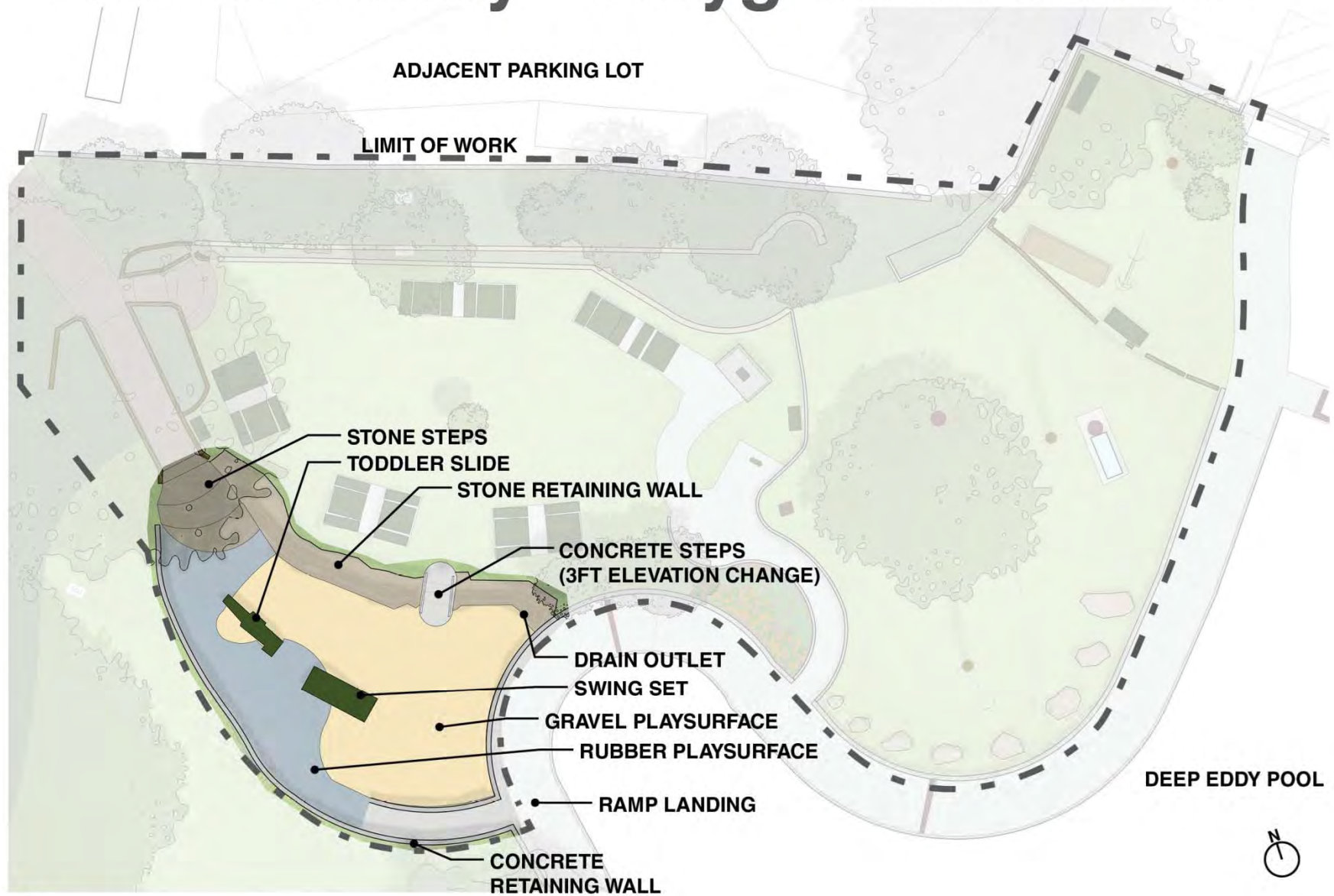
Site Inventory - Mid Terrace



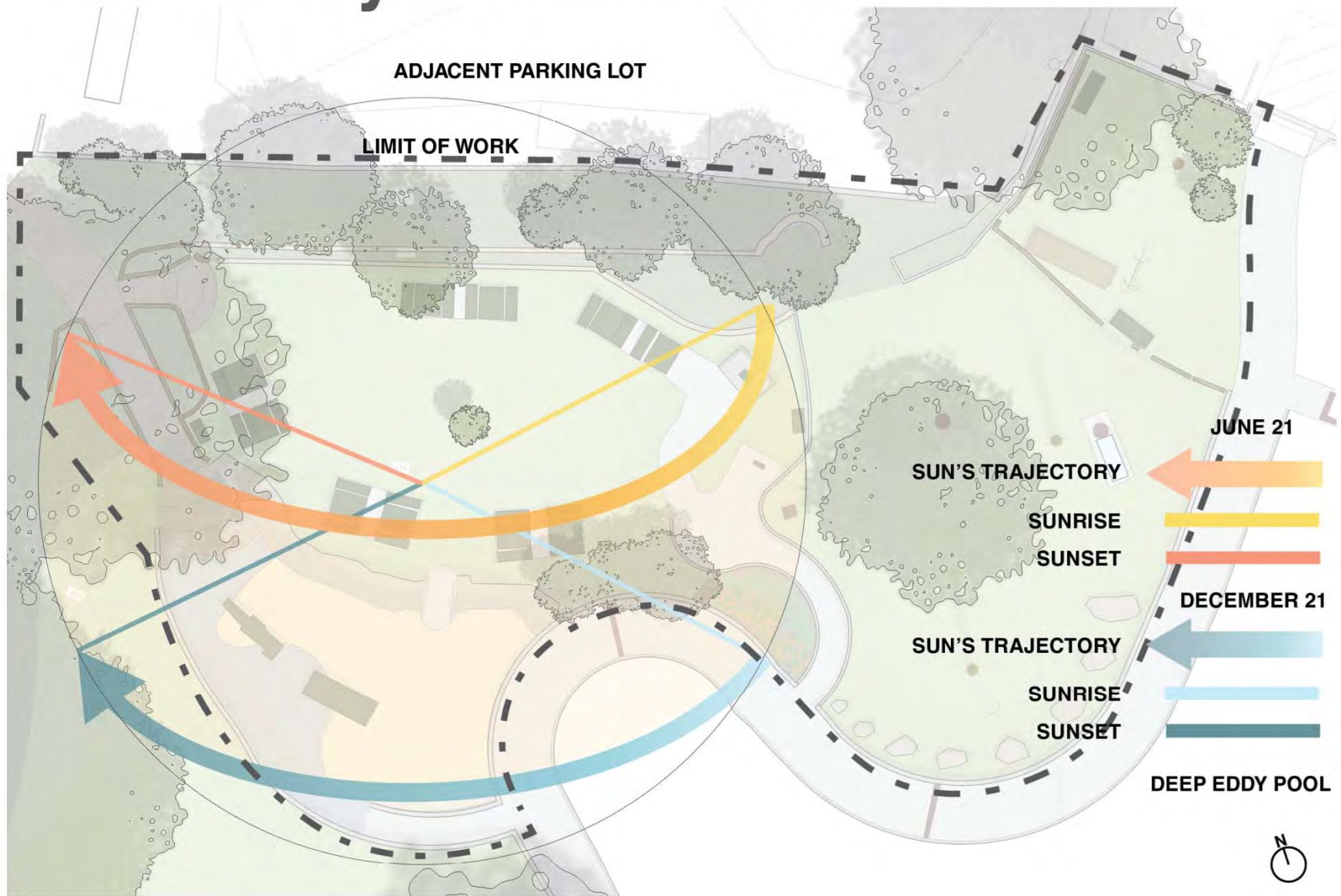
Site Inventory - Picnic Terrace



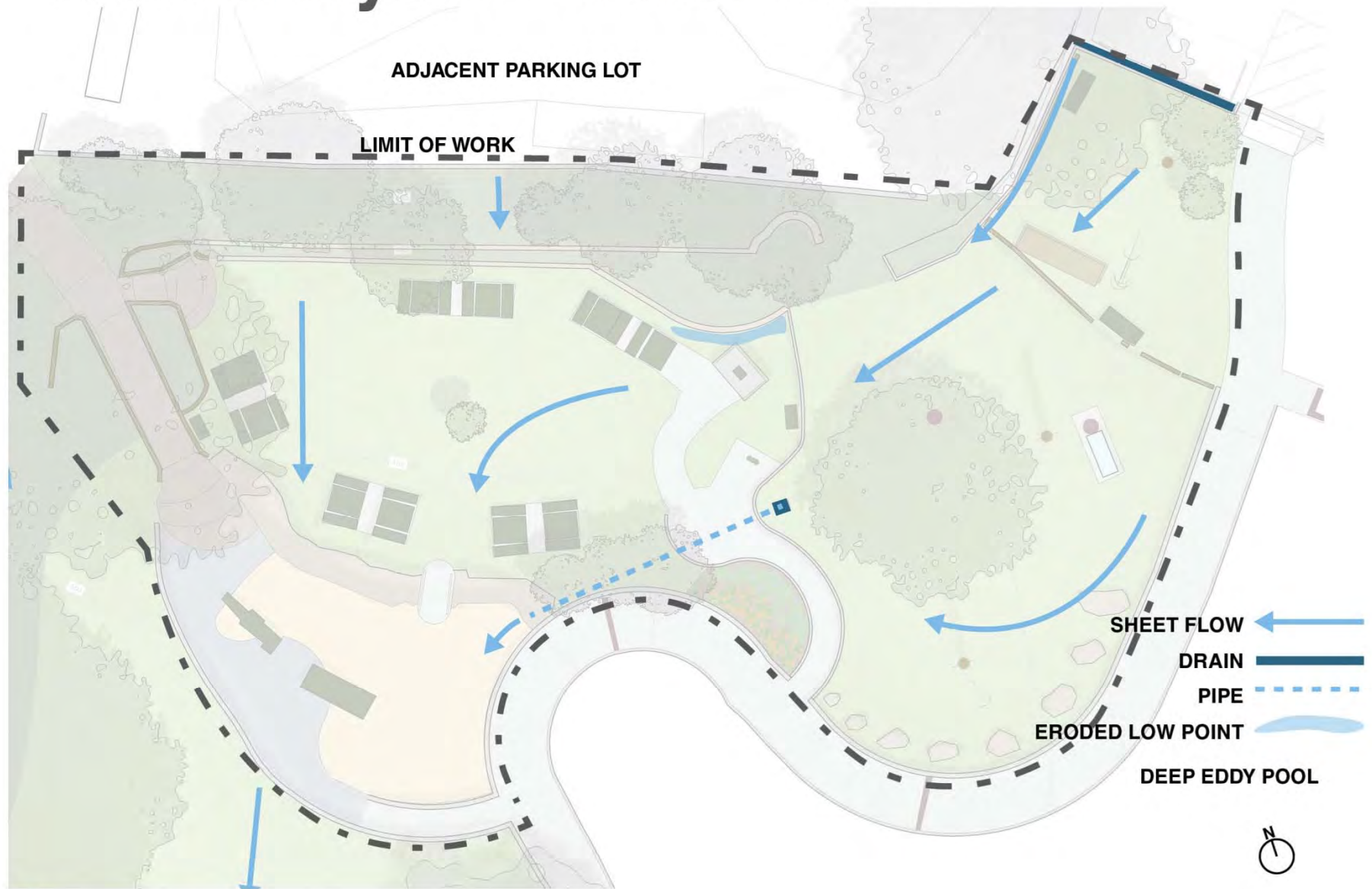
Site Inventory - Playground Terrace



Site Analysis - Sun and Shade



Site Analysis - Water Flow



Design Goals

- Create a sense of place complementary to Deep Eddy Pool
- Provide family and group oriented amenities
- Incorporate nature based play elements
- Improve site visibility/wayfinding from the parking lot
- Increase shade cover at playground and picnic areas
- Address invasive species
- Design within budget

Project Examples - Wildflower Center Family Garden



TREES REMOVED FROM SITE INVERTED AND USED AS PLAY STRUCTURES

CLIMBING LOGS & TREE STUMP HOP ALSO MADE BY REUSING TREES REMOVED FROM SITE

NEST PLAY AREAS - FOUND WOOD & STEEL TUBE WITH DECKING

Project Examples - Dove Springs



MORTARED STONE EDGE

**WOODED BALANCE BEAM AND DRY
STREAM CROSSING**

GRAVEL PLAYSURFACE

Project Examples - Other Texas “Nature” Playgrounds



SUNSIDE NATURE PLAY, HOUSTON, TX



CEDAR RANCH, KATY, TX



GUERRERO COLORADO RIVERPARK - AUSTIN, TX



DESIGNWORKSHOP

EILERS PARK - COMMUNITY INPUT MEETING 1

Keypad Polling

Why are you asking me question about myself?

- **The results of these questions are completely anonymous. We want to gather demographic information about who provided responses to these questions.**

Why are you asking me questions about my thoughts on the Park?

- **We want to know what your vision is for the Park. What should it feel like? What should people do there? What should it look like?**

What will you do with this information?

- **We will use the information we gather today to develop a design concept for Eilers Park that meets the goals and priorities of the community.**

Test question: My favorite color is:

(please raise your hand if you don't see a green light on your keypad)

- | | |
|-----------|----|
| A. Red | 0% |
| B. Orange | 0% |
| C. Yellow | 0% |
| D. Green | 0% |
| E. Blue | 0% |
| F. Purple | 0% |
| G. Other | 0% |

You are:

- | | |
|-------------------------|----|
| A. Male | 0% |
| B. Female | 0% |
| C. Prefer not to answer | 0% |

You are a:

- A. Child (0-12) 0%
- B. Teenager (13-19) 0%
- C. Young Adult (20-29) 0%
- D. Adult (30-54) 0%
- E. Senior (55+) 0%
- F. Prefer not to answer 0%

Number of children (0-12) living in your home:

A. 1	0%
B. 2	0%
C. 3	0%
D. 4	0%
E. 5	0%
F. 6	0%
G. 7+	0%
H. Prefer not to answer	0%

Number of teenagers (13-19) living in your home:

A. 1	0%
B. 2	0%
C. 3	0%
D. 4	0%
E. 5	0%
F. 6	0%
G. 7+	0%
H. Prefer not to answer	0%

What is your zip code?

A. 78701	0%
B. 78702	0%
C. 78703	0%
D. 78704	0%
E. 78705	0%
F. 78722	0%
G. 78723	0%
H. 78741	0%
I. 78746	0%
J. Other (raise your hand for a comment card)	0%

How often do you visit Eilers Park?

- | | |
|-------------------------|----|
| A. Weekly | 0% |
| B. Monthly | 0% |
| C. Every Few Months | 0% |
| D. Several Times a Year | 0% |
| E. About Once a Year | 0% |
| F. Almost Never | 0% |
| G. Never | 0% |

How often do you visit Deep Eddy?

- | | |
|-------------------------|----|
| A. Weekly | 0% |
| B. Monthly | 0% |
| C. Every Few Months | 0% |
| D. Several Times a Year | 0% |
| E. About Once a Year | 0% |
| F. Almost Never | 0% |
| G. Never | 0% |

How often do you use the Butler Hike and Bike Trail?

- | | |
|-------------------------|----|
| A. Weekly | 0% |
| B. Monthly | 0% |
| C. Every Few Months | 0% |
| D. Several Times a Year | 0% |
| E. About Once a Year | 0% |
| F. Almost Never | 0% |
| G. Never | 0% |

What programs and amenities could Eilers Park include that would pair with a trip to Deep Eddy or the Butler Hike and Bike Trail? (select all that apply):

- | | |
|---|----|
| A. Grills | 0% |
| B. Picnic Tables | 0% |
| C. Playground | 0% |
| D. Fitness Stations | 0% |
| E. Shaded Seating | 0% |
| F. Bottle Filling Station | 0% |
| G. Gardens | 0% |
| H. Other (raise your hand for a comment card) | 0% |

Eilers Park should include programs and amenities for the following age groups (select all that apply):

- | | |
|-------------------------|----|
| A. Children (0-12) | 0% |
| B. Teenagers (13-19) | 0% |
| C. Young Adults (20-29) | 0% |
| D. Adults (30-54) | 0% |
| E. Seniors (55+) | 0% |

What are the most important goals for Eilers Park (select your top three):

- | | |
|--|----|
| A. Create a sense of place complementary to Deep Eddy Pool | 0% |
| B. Provide family and group oriented amenities | 0% |
| C. Incorporate nature based play elements | 0% |
| D. Improve site visibility and wayfinding from the parking lot | 0% |
| E. Increase shade cover at playground and picnic areas | 0% |
| F. Address invasive species | 0% |
| G. Other (raise your hand for a comment card) | 0% |

The material character of the playground at Eilers Park should be (select one):



- | | | |
|----|--|----|
| A. | Natural (logs, stumps, rocks, stones and rope) | 0% |
| B. | Faux Natural (manufactured play features made to look like natural elements) | 0% |
| C. | Manmade (typical catalogue playground equipment) | 0% |
| D. | A combination of A and B | 0% |
| E. | A combination of A and C | 0% |
| F. | A combination of B and C | 0% |
| G. | Other (raise your hand for a comment card) | 0% |

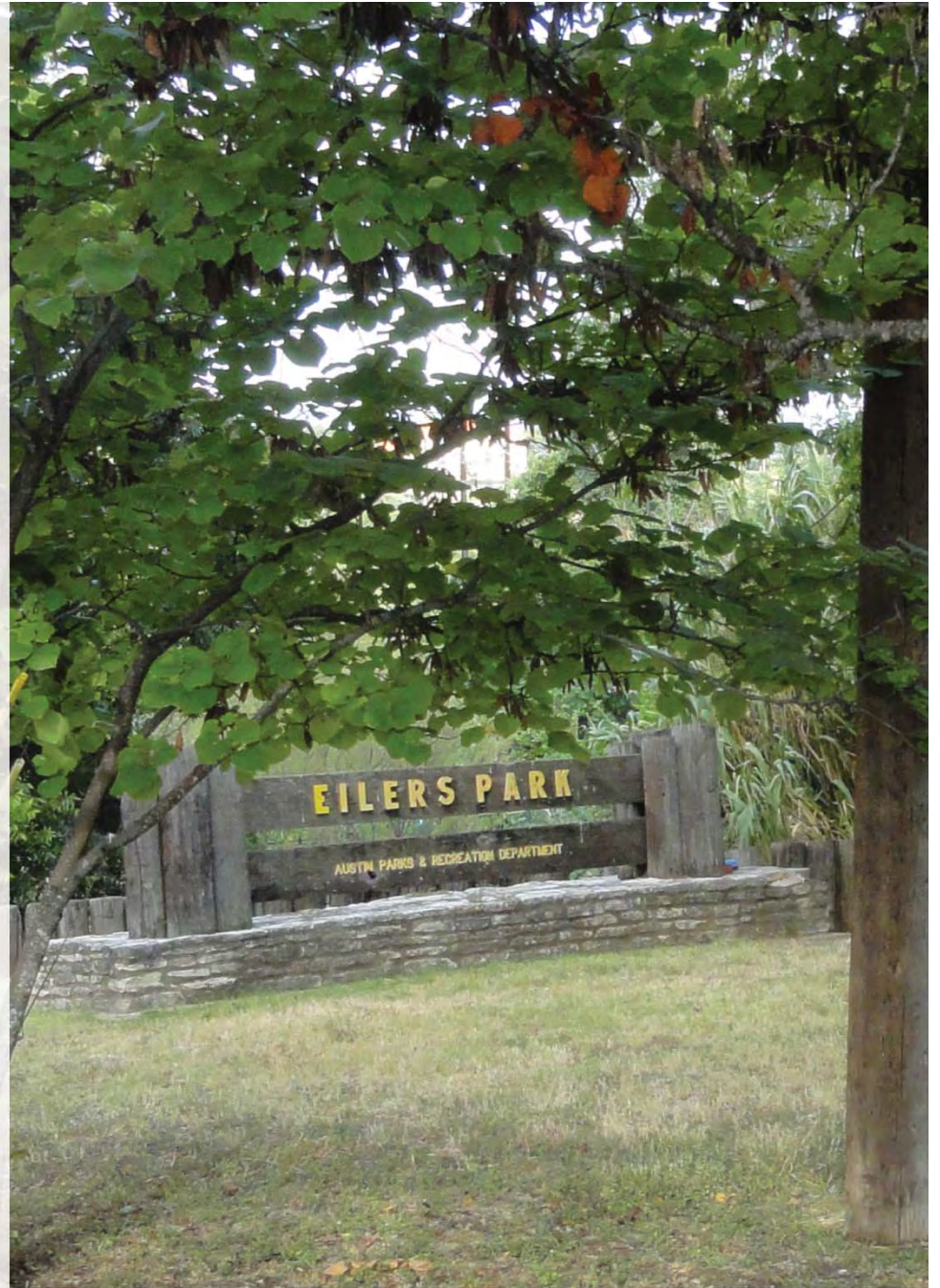
The playground at Eilers Park should provide children with opportunities to (select all that apply):

- | | |
|---|----|
| A. Balance | 0% |
| B. Build | 0% |
| C. Climb | 0% |
| D. Dig | 0% |
| E. Explore | 0% |
| F. Hide | 0% |
| G. Leap | 0% |
| H. Slide | 0% |
| I. Swing | 0% |
| J. Other (raise your hand for a comment card) | 0% |

Eilers Park should provide Adults with opportunities to (select all that apply):

- | | |
|---|----|
| A. Exercise | 0% |
| B. Grill | 0% |
| C. Picnic | 0% |
| D. Relax / Rest | 0% |
| E. Swing | 0% |
| F. Other (raise your hand for a comment card) | 0% |

Questions?



DESIGNWORKSHOP

EILERS PARK - COMMUNITY INPUT MEETING 1