



Emma Long Metropolitan Park Camping Guidebook



MENU

[Booking](#)

[Check In/Out](#)

[Cancellation](#)

[Campsites](#)

- [Bluff Sites \(tent camping\)](#)
- [Grove Sites](#)
- [Utility Sites](#)

[Utility Site Comparison Table](#)

[Map & Driving Directions Link](#)

[Online Resources](#)

[Park Campsite Map Overview](#)

[Park Rules Overview](#)

[Park Wide Amenities](#)



Emma Long Metropolitan Park - Camping

1600 City Park Road, Austin, Texas 78730

[Interactive Campsite Amenity and Picnic Site Map - Google Map](#)

Booking, Check In/Out, Cancellations

Campsite Booking: Book a site online up to 6 months before intended arrival time based upon availability. All bookings are first-come first-served. Please be aware that during peak season, “drive up” booking at the park may be affected by online reservations.

- Campsites may not be booked more than 14 consecutive nights in any 30-day period.
- Campers must leave the park for at least 1 night after 14 consecutive nights
- Campers should extend a visit/reservation through the online portal - www.austintexas.gov/parksonline.

On Site Staff Hours: Staff are available in booth from 8 am to 4 pm daily.

Check-In: Starts at 3 pm for all sites.

Check-Out: Check out time is 10 am.

NO check-out extensions are granted.

NOTICE – TOW AWAY	Vehicles/campers occupying sites beyond check out time, or sites rented by other users are subject to immediate towing at the owner’s expense.
--------------------------	--

Payments: Payment is due at the time the reservation is made and is paid [online](#).

Cancellations or Transfers:

- **14 days or more** – full refund of fees. **Less than 14 days** – 50% refund of fees.
- **No Show/Less than 24-hour notice (3 pm day before)** - NO refund.
- **Refunds** are returned to the payment source. Cash payments are returned by check from the City. Depending on demand/workload, refunds may take up to 6 weeks.
- **CANCELLATION EMAIL:** send cancellation requests to reservations@austintexas.gov

Park Entry Fee per Day:

- A park entrance fee is assessed per day per car. The fee for the first car is already included and paid with an online reservation.
 - Fees for additional vehicles/motorcycles by CAMPERS are paid at the pay station at check-in. **Pay at the automated pay stations** - ONLY Credit cards are accepted.
 - Fees for local or day visiting guests MUST be done online in advance by each user. See the park website park entry section for details. Passes do sell out. Sales start 14 days prior.
- **FEE:** \$5 per day, Monday through Thursday. \$10 per day Friday through Sunday, & Holidays

Park Amenities and Accessibility



Emma Long Metropolitan Park has a **sanitary sewer pump out** station located inside the park, along the main entry road near the main restroom complex. GRAY WATER AND BLACK WATER MUST BE DISCHARGED ONLY AT DUMP STATION



2 restroom complexes on site with hot/cold water. There are additional portable units throughout the park. The main restroom complex and showers are ADA accessible.



1 shower complex located in the central restroom complex on site with hot and cold water. There are 3 women's shower stalls, and 2 men's shower stalls in the main complex.



3 sand volleyball courts with nets are available for first-come first-served use. BRING YOUR OWN VOLLEYBALL.

1 half-court basketball area. BRING YOUR OWN BASKETBALL.



Swimming is allowed in the marked swimming area only, and is at your own risk. There is no lifeguard on duty.



Boats/watercraft may NOT beach/anchor on the shoreline, or tie off to any trees, or in any of the areas along the camping grounds. This creates erosion issues along the shoreline and harms beneficial plants. By law, a person may not operate sound equipment in a watercraft audible or causing a vibration 100 feet from the equipment.



- Grove Campsite #15 is ADA accessible.
- The west (upstream) pier is ADA accessible via the sidewalk from the main restroom complex.
- The main restroom complex is ADA accessible, and the showers are roll-in accessible.



There is **NO Wi-Fi** at this park location.



The Bluff-30 primitive (tent) sites-\$10 per site

A park entrance fee is charged per day per car. The 1st car fee is paid with an online reservation.

Capacity Limits:

- NO RV'S ALLOWED AT THESE SITES
- People per site: 8 people or less per site
- Motorized Vehicles: 2 personal vehicles/motorcycles or less per site.
- Sites limited as follows: All sites are limited to **4 tents or less.**

Site Information:

- **Picnic table(s):** At all sites except Bluff 30 Site.
- **Grill:** See chart below. Bring your own fire wood/charcoal.
- **Electrical:** No electricity is available at these sites.
- **Water:** 1 standard hose bib connection available for **communal/shared use** every 2-3 sites.
 - Backflow preventers are NOT provided at hose bib connections.
 - Campers may NOT exclusively use or block a communal water connection.
 - **Waterslides or temporary wading pools are NOT allowed in the parks.**

Campsite Number	Box Grill	Fire Ring	Picnic Table	Campsite Number	Box Grill	Fire Ring	Picnic Table
B1	Y	Y	Y	B16	Y	Y	Y
B2	Y	N	Y	B17	Y	Y	Y
B3	Y	Y	Y	B18	Y	Y	Y
B4	Y	Y	Y	B19	Y	N	Y
B5	Y	Y	Y	B20	Y	Y	Y
B6	Y	Y	Y	B21	Y	Y	Y
B7	Y	N	Y	B22	Y	Y	Y
B8	Y	Y	Y	B23	Y	Y	Y
B9	Y	Y	Y	B24	Y	Y	Y
B10	Y	Y	Y	B25	Y	Y	Y
B11	Y	Y	Y	B26	Y	N	Y
B12	Y	Y	Y	B27	Y	Y	Y
B13	Y	Y	Y	B28	Y	Y	Y
B14	Y	Y	Y	B29	Y	Y	Y
B15	Y	Y	Y	B30	Y	N	N

*Water is communal along the Bluff sites and is located every 2-3 sites. No camper may solely use or block use of the communal water connections.



The Grove-16 sites-\$10 per site

A park entrance fee is charged per day per car. The 1st car fee is paid with an online reservation.

Capacity Limits:

- People per site: 8 people or less per site.
- Motorized vehicles: 2 personal vehicles/motorcycles or less per site.
- Sites limited as follows: All sites are limited to **4 tents or less.**

Site Information:

- **Picnic table(s):** At all sites.
- **Grill:** See chart below. Bring your own fire wood/charcoal.
- **Electrical:** No electricity is available at these sites.
- **Water:** No water is available at these sites.

Waterslides or temporary wading pools are NOT allowed in the parks.

Campsite Number	Box Grill	Fire Ring	Picnic Table(s)
G1	Y	N	Y
G2	Y	N	Y
G3	Y	N	Y
G4	Y	N	1
G5	Y	N	Y
G6	Y	N	Y
G7	Y	N	Y
G8	Y	N	Y
G9	Y	N	2
G10	Y	N	Y
G11	Y	N	Y
G12	Y	N	Y
G13	Y	N	Y
G14	Y	Y	Y
G15	Y	Y	Y
G16	Y	Y	Y



Utility Sites- 20 sites

\$20 non-waterfront/\$25 waterfront per site

ONLY Sites 2, 4 and 7 are eligible for tent camping. All other sites require an RV.

A park entrance fee is charged per day per car. The 1st car fee is paid with an online reservation.

Utility Site Photo Gallery

Capacity Limits:

- People per site: 8 people or less per site
- Motorized Vehicles: 2 personal vehicles/motorcycles or less per site.
- Sites limited as follows: **1 RV & 2 tents maximum, OR**
Site 2,4, & 7 Only: 1 RV & 2 tents Maximum OR 4 tents & no RV

Site Information:

- **Improved pad:** 32' deep x 26' wide. All sites are back-in only.
Maximum RV/trailer length - 32 feet (bumper to bumper/hitch)
- **Picnic table(s):** A table is at all sites. Site 3 and 19 have 3 picnic tables.
- **Grill:** A box grill is at all sites. Bring your own firewood/charcoal.
- **Electrical at All Sites:** 50 Amp 4-prong grounded, 30 Amp 3-prong grounded, and a 20 Amp duplex outlet (2 Edison outlets)
- **Water:** At all sites. 1 potable water spigot (faucet) per site, back of pad.
 - Backflow preventers are NOT provided.

Waterslides or temporary wading pools are NOT allowed in the parks.

Side by side comparison table located on the next page.

Utility Campsites Side by Side Comparison Table

Campsite Number	Camping Device Type Allowed	Box Grill	Fire Ring	Picnic Table (s)	Water Back of Pad	Electrical Right or Left Side of Pad (facing pad from street)
U1	RV only	Y	Y	1	Y	Right
U2	RV or tent	Y	Y	1	Y	Right
U3	RV only	Y	Y	3	Y	Left
U4	RV or tent	Y	Y	1	Y	Right
U5	RV only	Y	Y	1	Y	Left
U6	RV only	Y	Y	1	Y	Right
U7	RV or tent	Y	Y	1	Y	Right
U8	RV only	Y	Y	1	Y	Left
U9	RV only	Y	Y	1	Y	Left
U10	RV only	Y	Y	1	Y	Left
U11	RV only	Y	Y	1	Y	Right
U12	RV only	Y	Y	1	Y	Right
U13	RV only	Y	Y	1	Y	Right
U14	RV only	Y	Y	1	Y	Right
U15	RV only	Y	Y	1	Y	Right
U16	RV only	Y	Y	1	Y	Left
U17	RV only	Y	Y	1	Y	Right
U18	RV only	Y	Y	1	Y	Right
U19	RV only	Y	Y	3	Y	Right
U20	RV only	Y	Y	1	Y	Right



Park Rules, Laws and Camping Restrictions Emma Long Specific Rules

- **Capacity Restrictions ALL Sites:**
 - Sites are restricted to 8 people or less per site.
 - Sites are restricted to 2 personal vehicles/motorcycles or less per site.
- **Quiet time** is: 10 pm – 8 am.
 - All radios and generators must be turned **OFF** during this time.
 - **NO MUSIC MAY BE PLAYED FROM CARS/TRUCKS PARKED ON SITE.**
 - As a courtesy to all campers, **vehicles should be in the park by 9:30 pm.**
- **Pets** must remain on leash under the control of the owner at all times.
- Styrofoam is prohibited. **Glass containers** are prohibited by law.
- Collection of fire wood at the park is prohibited.
- Rules and restrictions regarding firearms may be found in the park rules.
- A person under 18 years of age in the park between the hours of 10 p.m. and 5 a.m. must be accompanied or supervised by an adult. The ratio of adults to minors shall not be less than 1 adult for every 8 minors.
- **Waterslides or temporary wading pools are NOT allowed in the parks..**

Park Wide Rules:

City of Austin Parks and Recreation Department Rules: www.austintexas.gov/parks

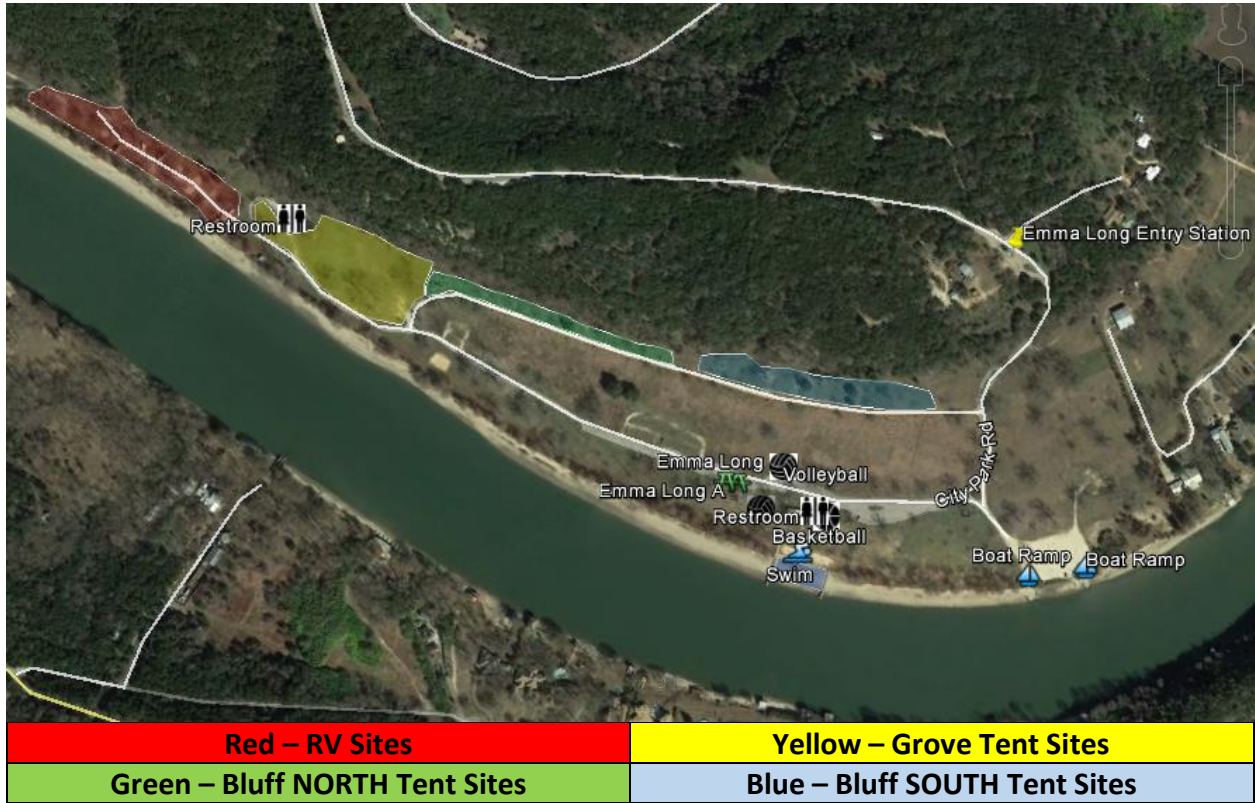
Common City of Austin Laws:

- **Alcohol** may be consumed directly at an approved (paid) campsite reservation. Alcohol is not permitted in other park locations. Sales are NOT allowed.
- **Glass containers** are prohibited in the entire park system.
- **Smoking** and vaping is prohibited in all park areas. Violations are a Class C Misdemeanor.
- Amplified music/sounds/dj's and/or bands all require a sound permit, and are ONLY issued for the picnic table areas with a reservation.
- **Watercraft and amplified sound:** A person may not operate sound equipment in a watercraft audible or causing a vibration 100 feet from the equipment.
- **8-5-81 - WATERCRAFT AND OTHER MOTORIZED CRAFT ON LAKE AUSTIN.** (A) A person may not use or possess a jet ski, wet bike, motorized surfboard, or similar device on Lake Austin: (1) from sunset on the Friday before Memorial Day until sunrise on the Tuesday after Memorial Day; (2) from sunset on the Friday before Labor Day until sunrise on the Tuesday after Labor Day; or (3) from sunset on July 3 until sunrise on July 5.

**For Emergencies or Illegal Activity please dial 911,
After hour Non-emergency please Dial 311.**

Park Overview Map

Interactive Campsite Amenity and Picnic Site Map - Google Map



RV/Utility Sites



Grove Tent Sites



Bluff North Tent Sites



Bluff South Tent Sites

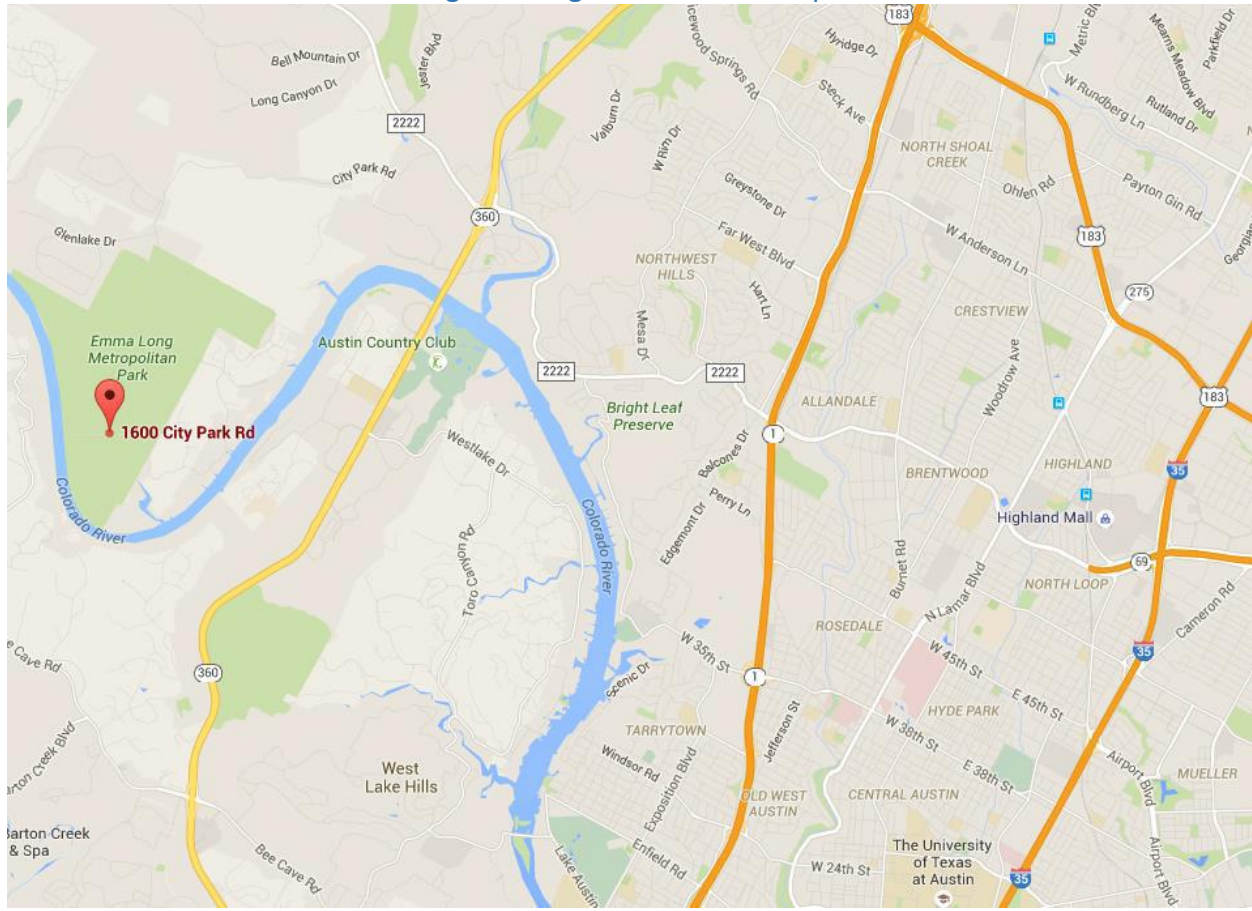


Emma Long Metropolitan Park - Camping

1600 City Park Road, Austin, Texas 78730

[Interactive Campsite Amenity and Picnic Site Map - Google Map](#)

[Google Driving directions to the park](#)



ONLINE RESOURCES

- Read up!** [Emma Long Park Website](#)
- Find us!** [Google Driving directions to the park](#)
- See us!** [Photo gallery of the park](#)
[Google Map of park sites, features, and campsites \(with images\)](#)
- Book us!** [Online calendar availability! Select "campsites".](#)