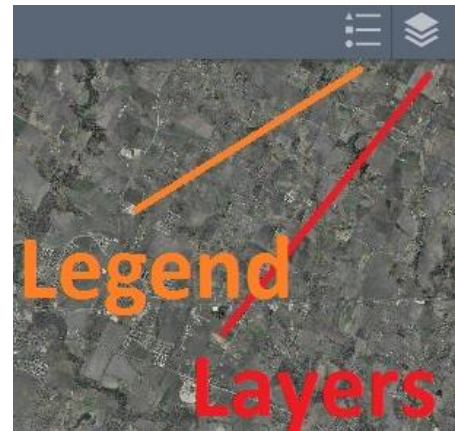
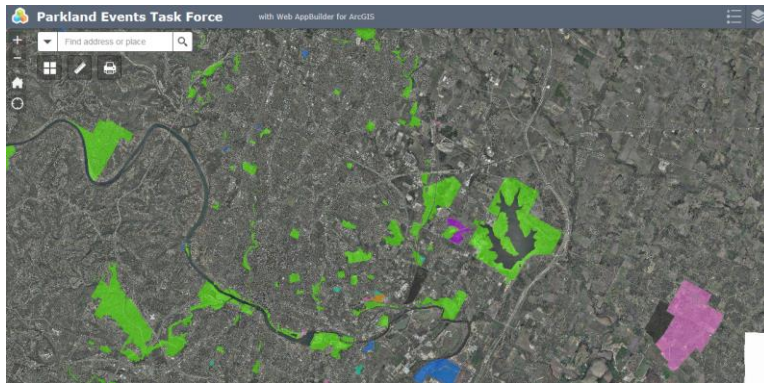


City of Austin Properties Approximately 10+ Acres or More

[Link](#)

<http://austin.maps.arcgis.com/apps/webappviewer/index.html?id=5acee44567084e0a84d9e57080963deb>

You can click/select a parcel and a pop-up screen will identify information about the site.



Layers TAB

- Council Member Districts (select feature to activate)
- Creeks/floodplain (auto turns on when opened)
 - o NOTE: this layer is viewable ONLY at certain "zoom in" levels.
 - o NOTE: (25 and 100yr). This layer is takes a bit of time to load.

Legend TAB

- Properties color coded by OWNER.