



Summary Report of Public Meeting #3

April 23, 2019

Austin Parks Foundation, in coordination with the City of Austin Parks and Recreation Department, awarded park design services to Pomerleau Pocket Park for Park Master Planning. Throughout the year long master planning process, public input from the surrounding community was solicited to provide a long range vision and amenity prioritization for future development of the park.



The third public meeting included approximately thirty (30) attendees and was held from 6pm-8pm on Tuesday, April 23, 2019 at the Earl J. Pomerleau Pocket Park at 1906 Patton Lane. The meeting featured two final draft boards along with park amenity lists giving the participants an opportunity to rank their top ten amenities and add comments and preferences to the final draft boards.

Activity: Park Amenity Prioritization



The Pomerleau Community at the Meeting



Earl J. Pomerleau Pocket Park

Park Master Planning

Meeting attendees were provided with a list of park amenities to rank from 1 (highest priority) to 10 (lowest priority.) The number of people who ranked each in first, second, and third place is listed below:

	Estimated Installment Cost	#1	#2	#3
CONCRETE LOOP TRAIL/ WALKS	\$43,000	5	3	3
PAVILION	\$75,000	2	3	3
PLAY AREA	\$250,000-\$350,000	9	4	2
FITNESS PLAZA	\$75,000	-	-	1
KIOSK	\$15,000	-	-	0
DECOMPOSED GRANITE TRAIL	\$17,000	4	3	6
MEADOW RESTORATION	VARIABLES	3	2	2
PICNIC AREAS	\$4,000	2	7	3
BENCHES	\$2000 EACH	1	-	4
SHADE TREES	\$500 EACH	3	6	4

Master Plan Final Draft:

The park master plan will lay the framework to preserve the **CHARACTER** of the existing parkland



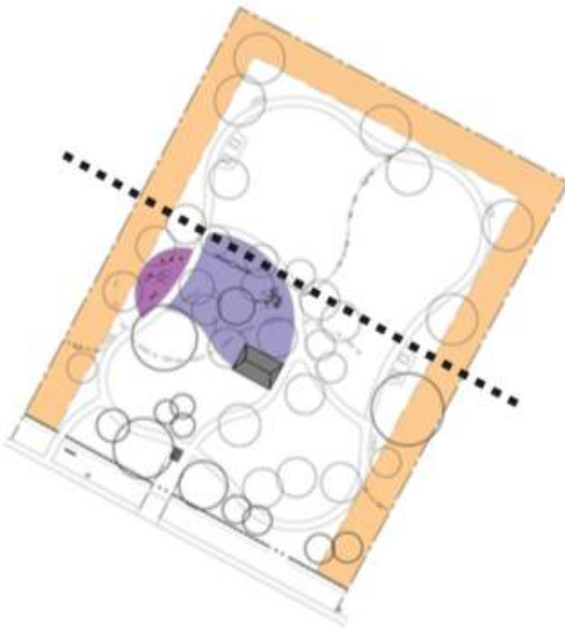
while providing flexible community **AMENITIES** for all.

Placed to serve as the hub of the park, the pavilion is centered in the middle of the site for ease of access and safety. The layout combines both maintained turf for flexible open space uses and the establishment of a native meadow for a portion of the site. There are many options for exploration through a meandering loop trail layout and connection walks while serving the neighborhood with many options for seating, gathering and play.



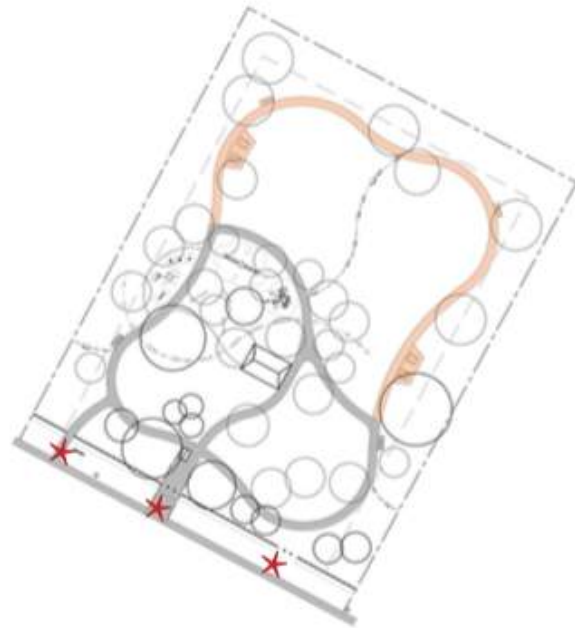


Final Framework Diagrams:



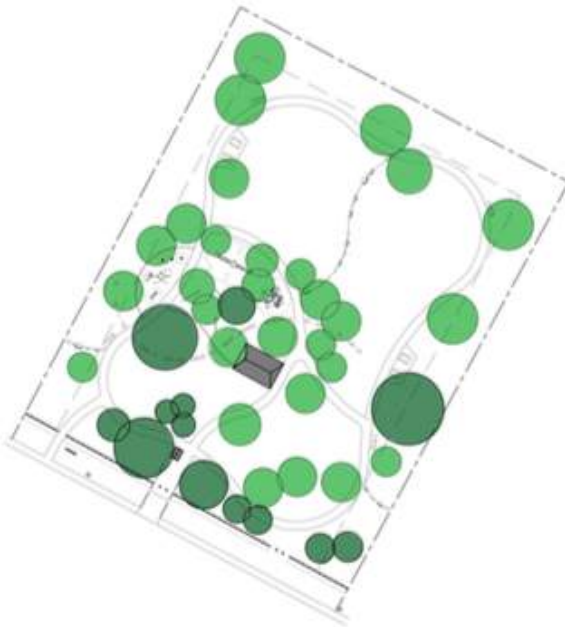
SETBACKS/ BUFFER ZONE

- 25' SETBACK FROM ALL ADJACENT PROPERTIES
- PAVILION CENTERED IN MIDDLE OF PARKLAND
- ACTIVE AMENITIES IN FRONT HALF OF PARK, AND PASSIVE USES IN REAR HALF
- PLAY AREA AND FITNESS PLAZA LOCATED CLOSER TO ADJACENT CHURCH



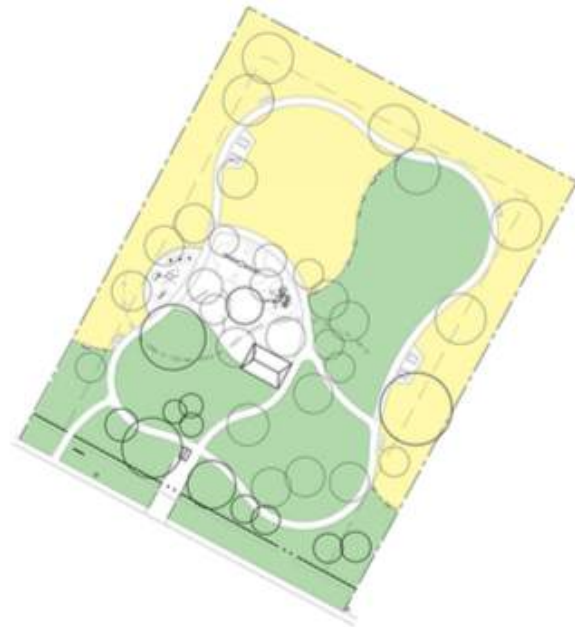
CIRCULATION/ ACCESS

- THREE ACCESS POINTS FROM PATTON LANE
- PROPOSED BOLLARDS AT ACCESS POINTS OPEN PARK WHILE PROHIBITING VEHICULAR ACCESS BY GENERAL PUBLIC
- MAINTAIN CONTINUOUS FENCING ALONG NORTH, WEST AND EAST PROPERTY LINES



SHADE/ TREE COVER

- EXISTING MATURE TREES TO REMAIN AT FRONT OF PROPERTY
- NEW SHADE TREES PLACED AROUND PLAY AREA AND PAVILION
- SHADE TREES PROPOSED ALONG LOOP TRAIL, ADJACENT TO PICNIC AREAS AND BENCH LOCATIONS, WHILE KEEPING NATIVE RESTORATION MEADOW OPEN



OPEN SPACE

- MAINTAINED LAWN AROUND ACTIVE USES FOR FLEXIBLE USE
- NATIVE GRASS MEADOW ALONG EDGES AND IN REAR OF PROPERTY WHERE THERE IS LESS EXISTING TREE COVER
- BOULDERS PLACED TO DELINEATE EDGE BETWEEN MAINTAINED TURF AND NATIVE GRASS MEADOW



Earl J. Pomerleau Pocket Park

Park Master Planning

Some of the hopes and concerns expressed about the development of the park included:

1. Talk to multi-family apartments to add gates so the families there can easily access it on their end
2. Add play structures with slides and swings
3. Add a soccer field/goal
4. Control vegetation on the fenceline