



# North Shoal Creek Neighborhood Plan

## Workshop #1

City of Austin Planning and Zoning Department

October 1, 2016



# Presentation Overview

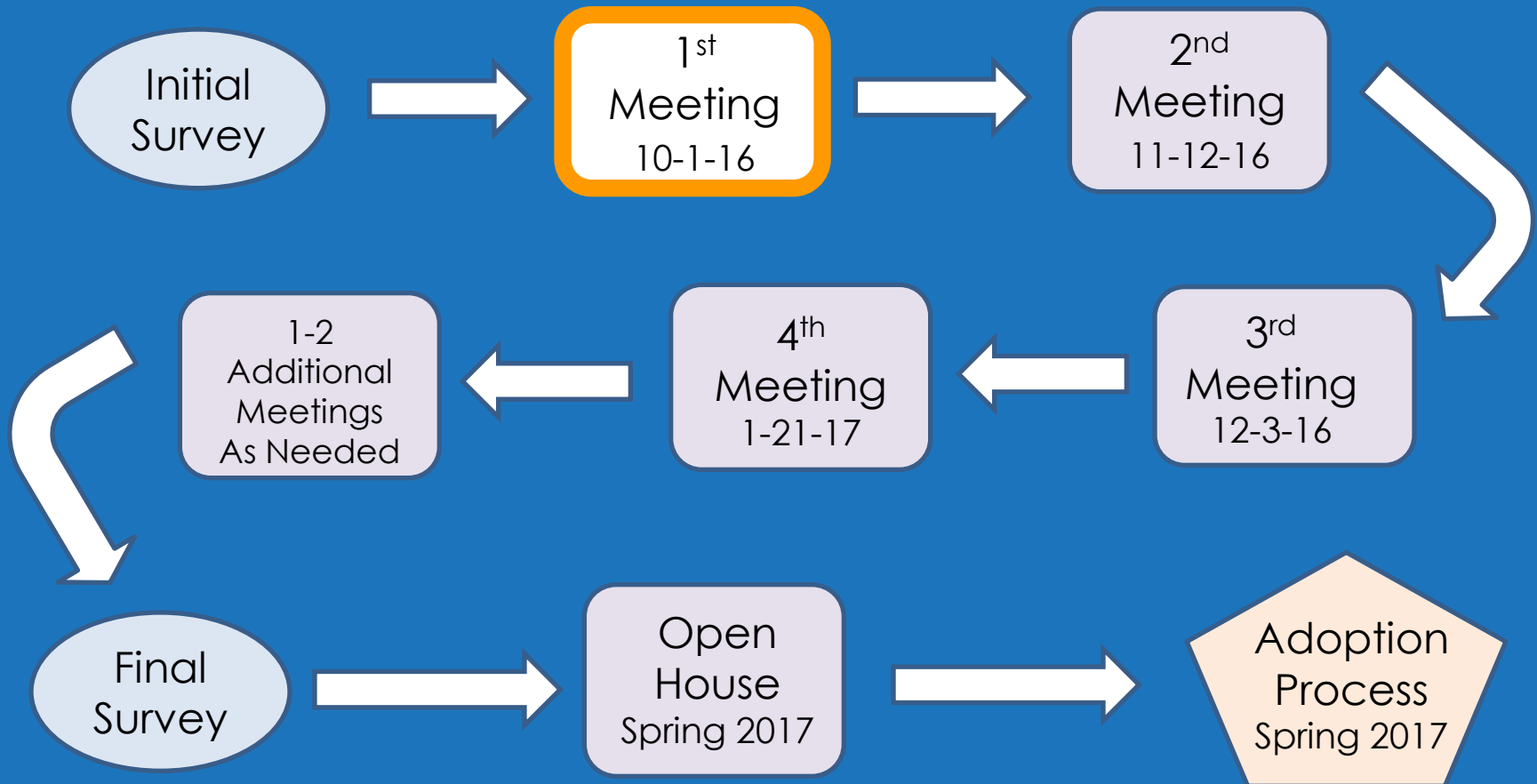
- ❑ The North Shoal Creek Planning Process
- ❑ Why plan?
- ❑ Neighborhood Plans Overview
- ❑ Initial Survey Results
- ❑ North Shoal Creek Overview
- ❑ Creating Our Ground Rules
- ❑ Exercise #1: How Complete is Your Community
- ❑ Exercise #2: Mapping Existing Conditions
- ❑ Exercise #3: Potential for Change

# Today's Meeting



- Introduce and orient participants to the planning process.
- Collect preliminary information to begin planning

# Neighborhood Planning Process



***Planning is bringing the future into the present so that you can do something about it now.***

Alan Lakein

***If you don't know where you are going, you'll end up someplace else.***

Yogi Berra

***A good plan today is better than a perfect plan tomorrow.***

Gen. George S. Patton

# Why plan?

- Austin is changing
- City's population is expected to nearly double by 2040
- Establish a vision and then identify the steps to achieve it

# Austin Municipal Airport – 1930s







# Loop 360 / Lake Austin – 1980





# Allandale Village — 1950





H-E-B

LOW PRICES EVERY DAY

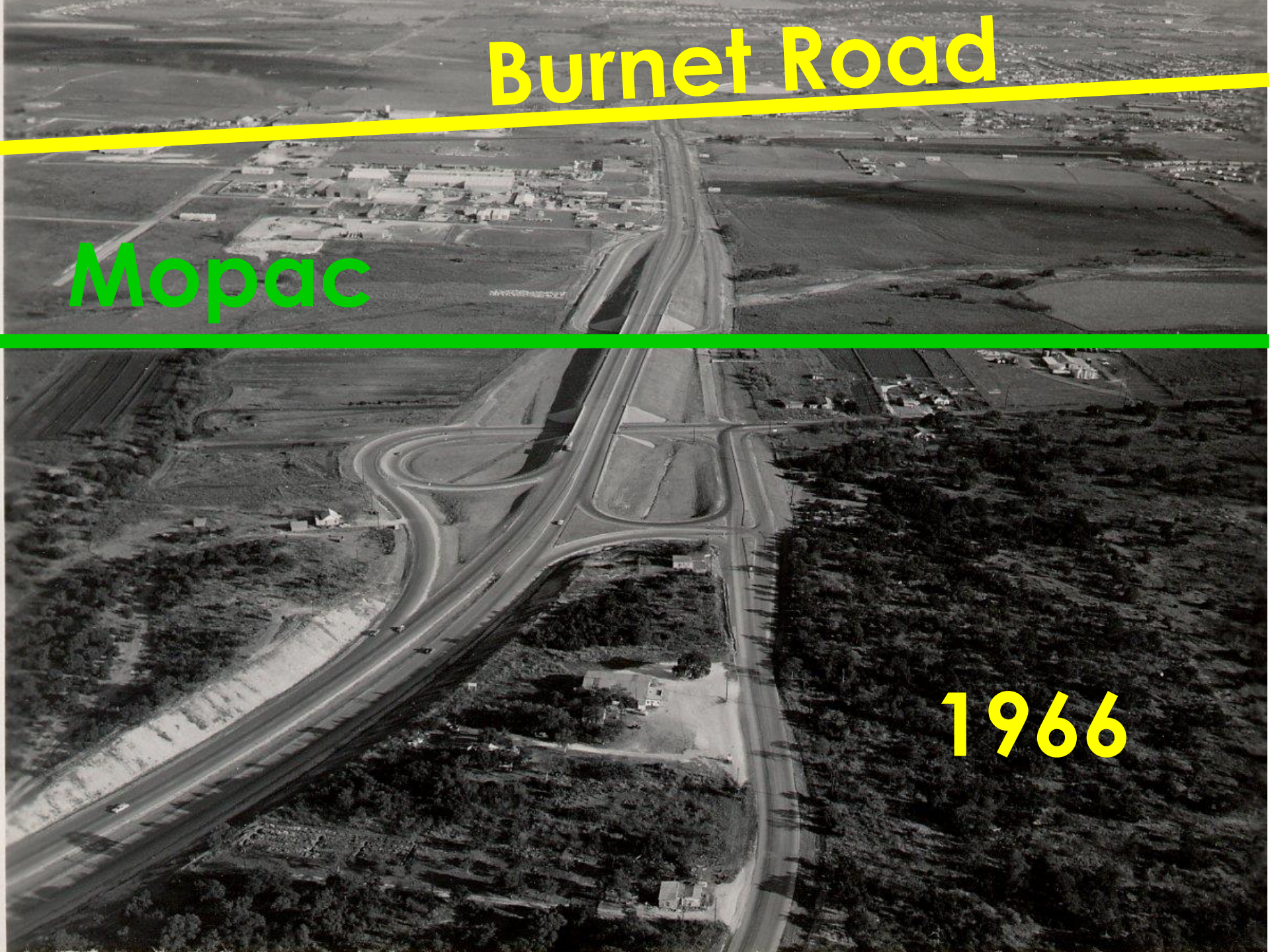
PHARMACY

ALLANDALE  
KROENIG

# Burnet Road

Mopac

1966



# Burnet & Lawnmont — 2016













# Austin's Planning Framework

- City Charter
- *Imagine Austin Comprehensive Plan*
- Small Area Plans



# The Comprehensive Plan

*Imagine Austin* provides a city-wide vision for how to accommodate growth.

# Creating Complete Communities

- Central goal of *Imagine Austin*
- Creates a more sustainable city
- Promotes physical activity and community engagement



# Creating Complete Communities

- Residences
- Employment
- Shopping
- Learning
- Open space
- Recreation
- Other amenities and services



# Creating Complete Communities

- Fulfills material, social, and economic needs
- For Austinites of all ages and abilities
  - Children
  - Adults
  - Seniors



**Growth Concept Map**

**Legend**

- Regional Center
- Town Center
- Neighborhood Center
- Activity Corridor
- Activity Centers for Redevelopment in Sensitive Environmental Areas
- Job Center
- Current Open Space
- Future Open Space
- Barton Springs Contributing Zone
- Barton Springs Recharge Zone
- College / University

**Transportation**

- High Capacity Transit Stop
- ⊕ Proposed High Capacity Transit Stop
- High Capacity Transit
- Highway
- Other Streets

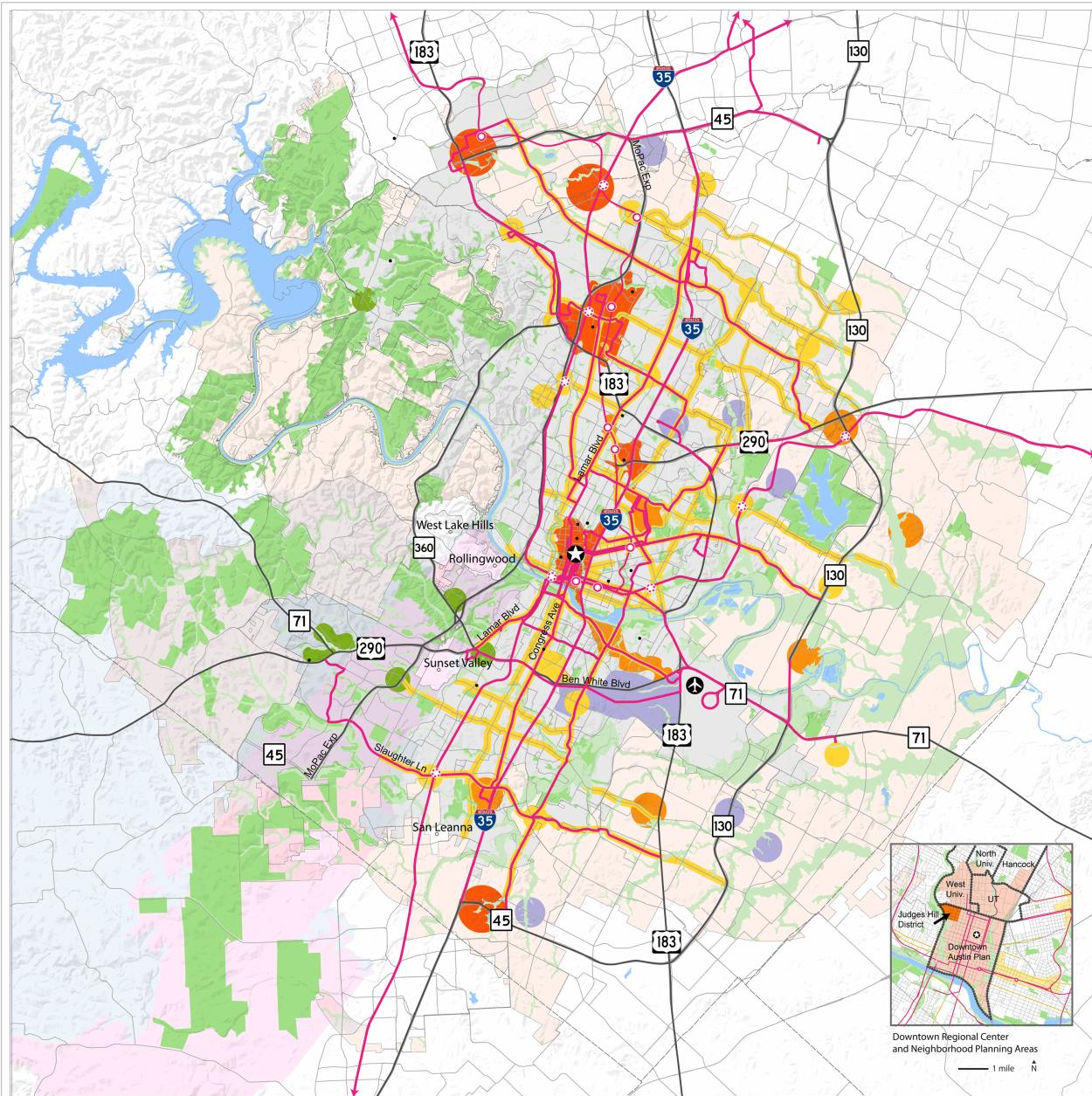
**Boundaries**

- City Limits
- ETJ
- County Boundaries

The Growth Concept Map applies the Imagine Austin vision statement to the city's physical development. Generated through a public scenario-building process, it defines how we plan to accommodate new residents, jobs, mixed use areas, open space, and transportation infrastructure over the next 30 years.

Map Disclaimers: A comprehensive plan shall not constitute zoning regulations or establish zoning district boundaries. This product is for informational purposes and may not have been prepared for or be suitable for legal, engineering, or surveying purposes. It does not represent an on-the-ground survey and represents only the approximate relative location of property boundaries. This product has been produced by the Planning and Development Review Department for the sole purpose of geographic reference. No warranty is made by the City of Austin regarding specific accuracy or completeness.

Adopted June 15, 2012



Downtown Regional Center and Neighborhood Planning Areas  
1 mile N

# Growth Concept Map - 2039

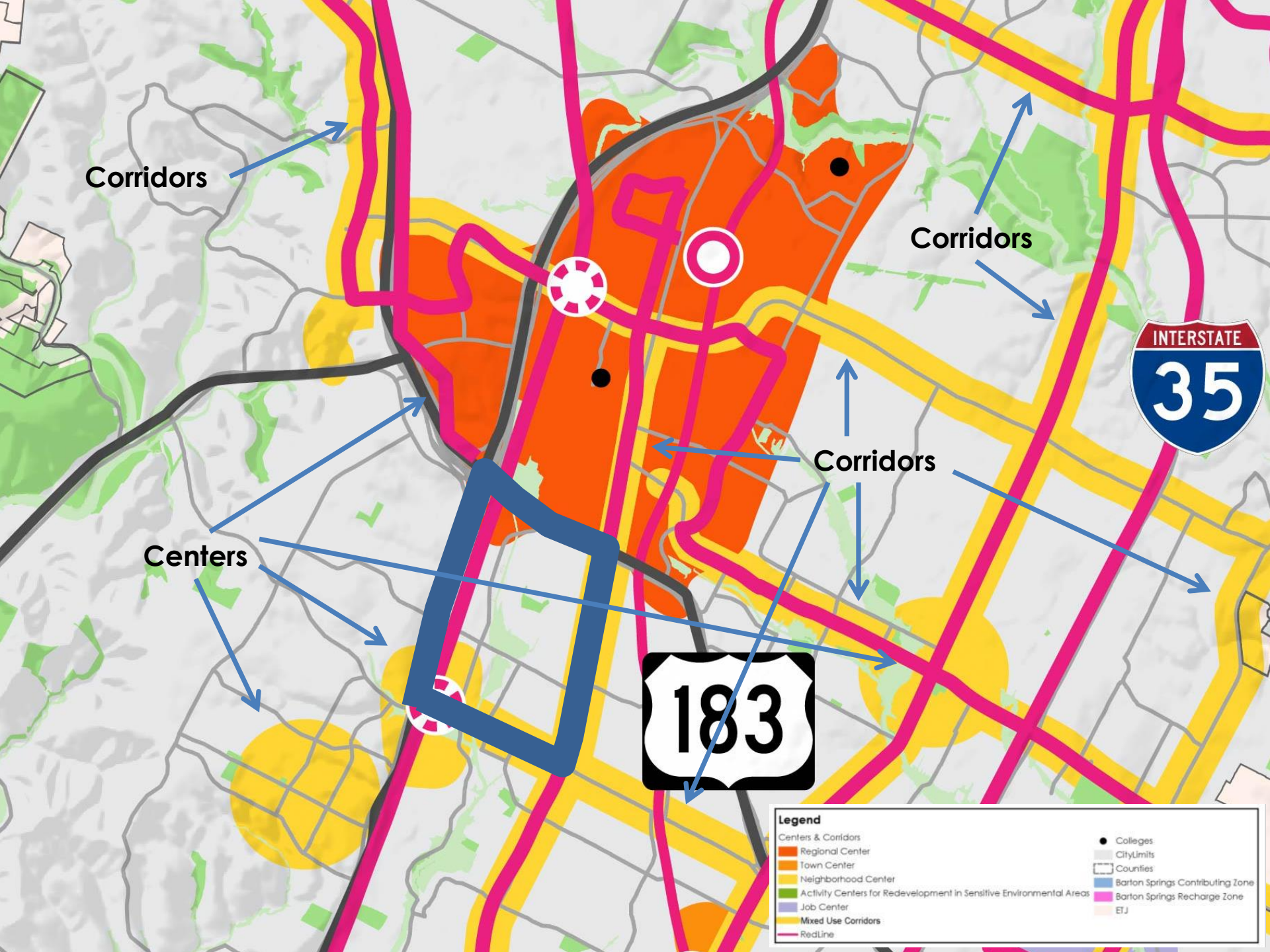
North Shoal Creek NPA

**Legend**

Centers & Corridors	● Colleges
Regional Center	City Limits
Town Center	Counties
Neighborhood Center	■ Barton Springs Contributing Zone
Activity Centers for Redevelopment in Sensitive Environmental Areas	■ Barton Springs Recharge Zone
Job Center	■ ETJ
Mixed Use Corridors	
RedLine	

How will the North Shoal Creek Neighborhood Plan relate to Imagine Austin?





Corridors

Corridors

Corridors

Centers



Legend	
<b>Centers &amp; Corridors</b>	
<span style="display:inline-block; width:10px; height:10px; background-color:orange;"></span>	Regional Center
<span style="display:inline-block; width:10px; height:10px; background-color:yellow;"></span>	Town Center
<span style="display:inline-block; width:10px; height:10px; background-color:lightyellow;"></span>	Neighborhood Center
<span style="display:inline-block; width:10px; height:10px; background-color:lightgreen;"></span>	Activity Centers for Redevelopment in Sensitive Environmental Areas
<span style="display:inline-block; width:10px; height:10px; background-color:lightblue;"></span>	Job Center
<span style="display:inline-block; width:10px; height:10px; background-color:yellow;"></span>	Mixed Use Corridors
<span style="display:inline-block; width:10px; height:10px; background-color:lightpink;"></span>	RedLine
<span style="display:inline-block; width:10px; height:10px; border:1px solid black;"></span>	Colleges
<span style="display:inline-block; width:10px; height:10px; border:1px solid gray;"></span>	City Limits
<span style="display:inline-block; width:10px; height:10px; border:1px solid black;"></span>	Counties
<span style="display:inline-block; width:10px; height:10px; background-color:blue;"></span>	Barton Springs Contributing Zone
<span style="display:inline-block; width:10px; height:10px; background-color:lightpink;"></span>	Barton Springs Recharge Zone
<span style="display:inline-block; width:10px; height:10px; background-color:lightorange;"></span>	ETJ

# What is a neighborhood plan?

- A small area plan for a part of Austin
- An amendment to *Imagine Austin*
- A guide to manage change

# What is a neighborhood plan?

- Represents all community interests
  - Businesses
  - Homeowners
  - Renters
  - Investors
  - Intuitions
  - The City of Austin
  - Other agencies
  - Other stakeholders

# What is a neighborhood plan?

- Establishes a vision based on common ground
- Tool to inform land use decisions
- A “to-do” list

# A neighborhood plan is not . . .

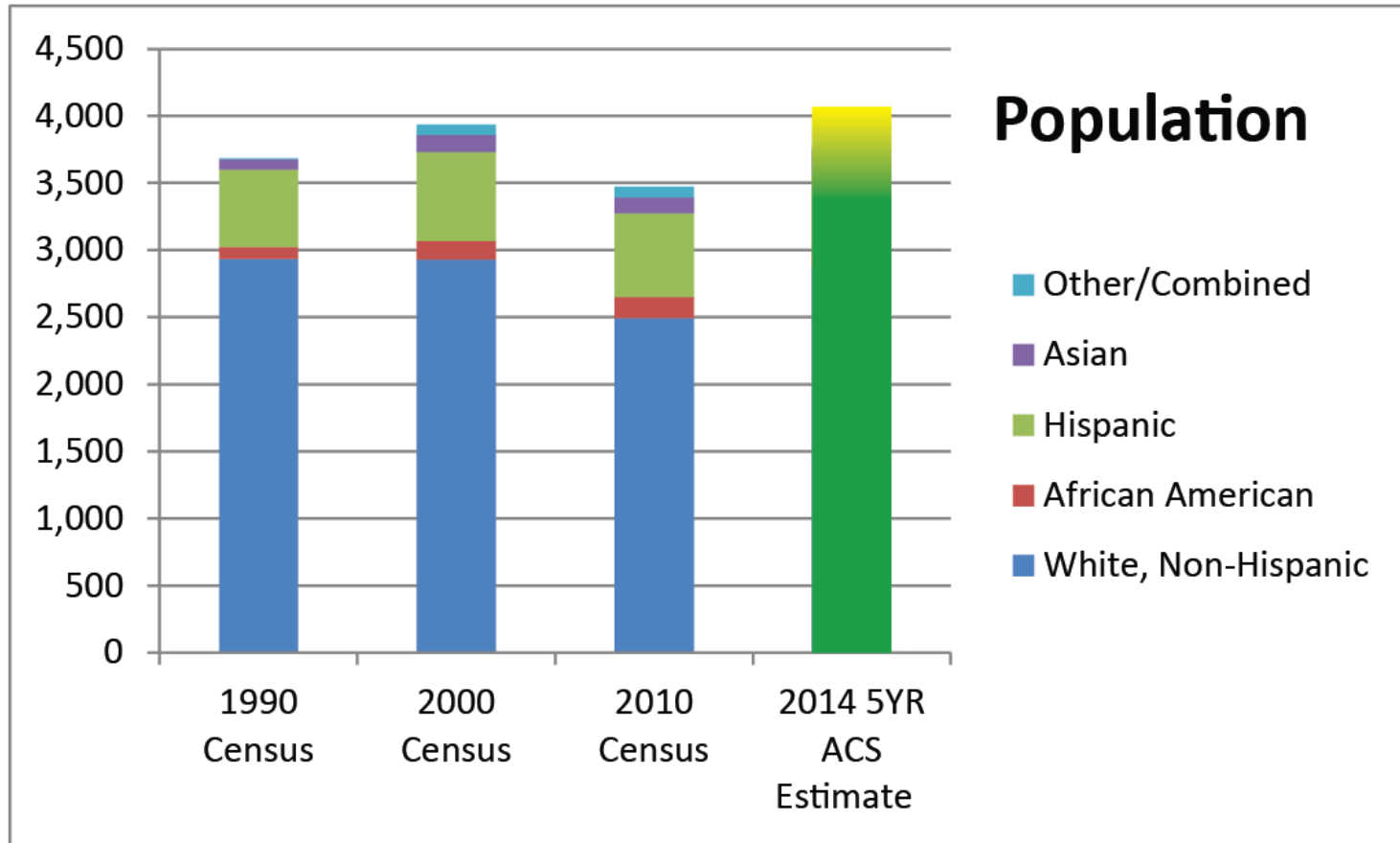
- Set in stone, it can be amended / changed
- A means to stop change
- A cure-all—it won't address every community issue

The background features a red book with a white seal on the cover. The seal depicts a figure holding a staff and a shield, with a banner below it. Text on the book cover includes "THE CITY OF" and "THE CITY OF".

# What will be the plan's relationship to CodeNEXT?

- The plan will inform the mapping of the new code to the North Shoal Creek Neighborhood Planning Area

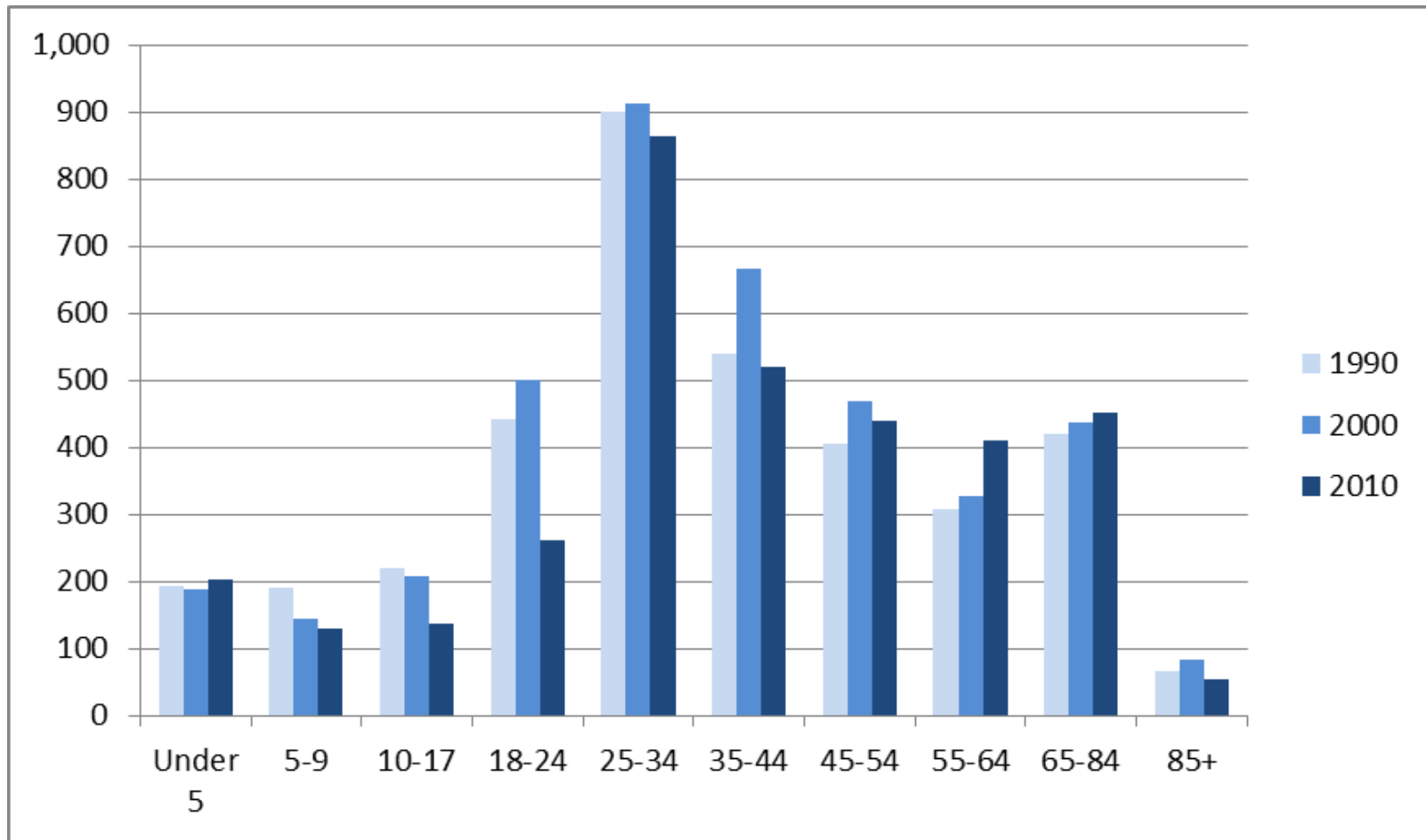
# North Shoal Creek Overview



2014 Population Estimate: 3,761

# North Shoal Creek Overview

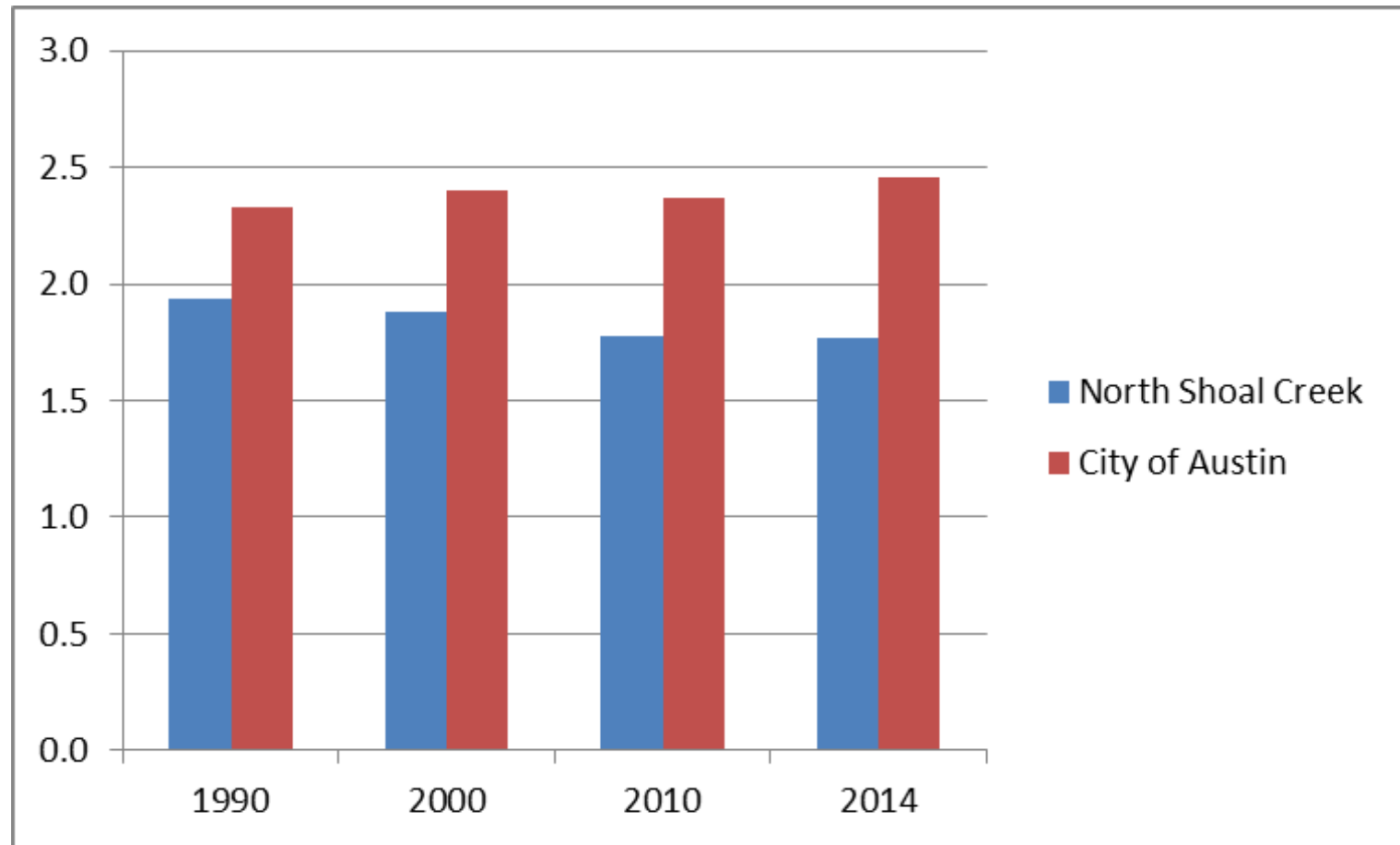
Age Group Change by Decade





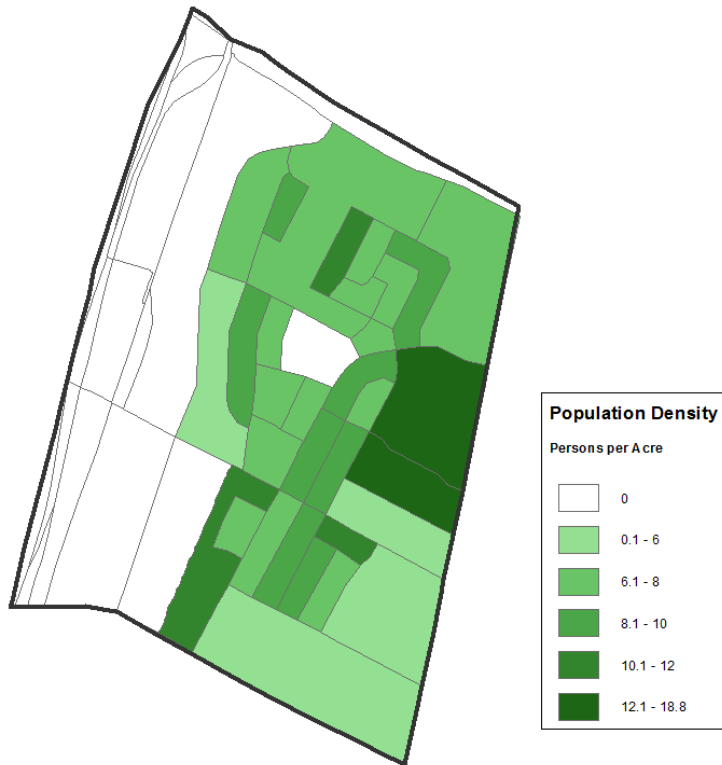
# North Shoal Creek Overview

Average Household Size by Decade

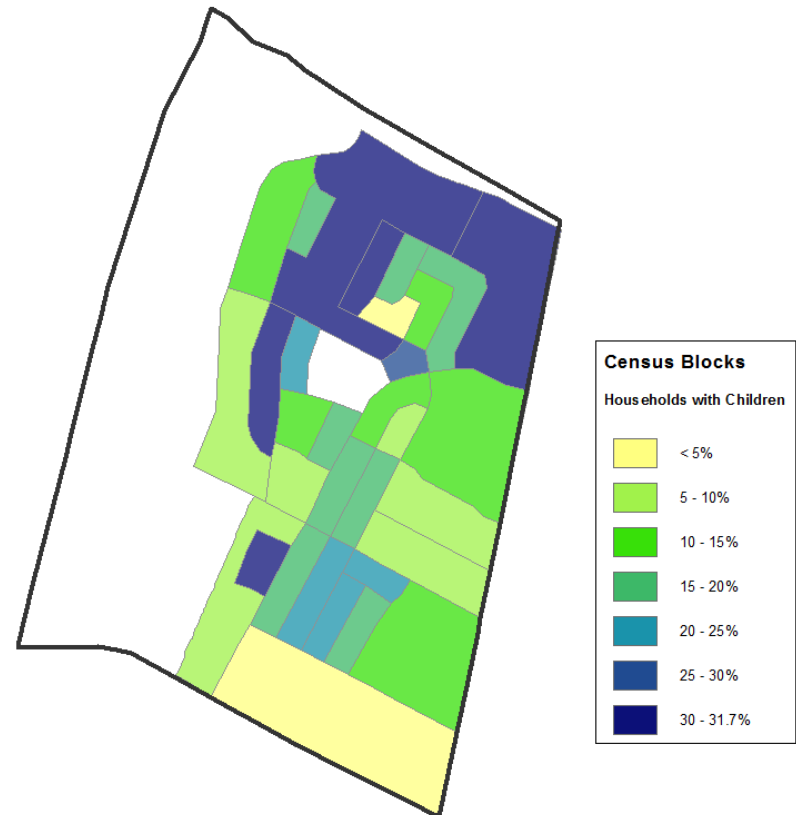


# North Shoal Creek Overview

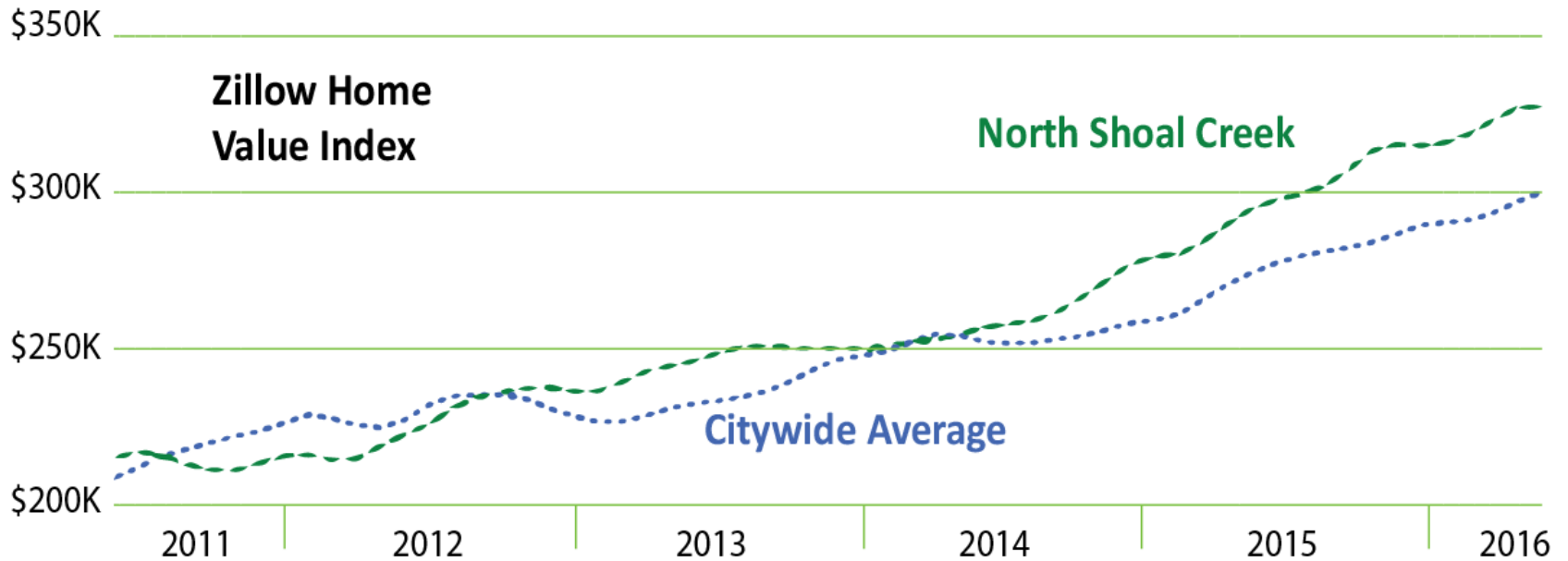
Population Density



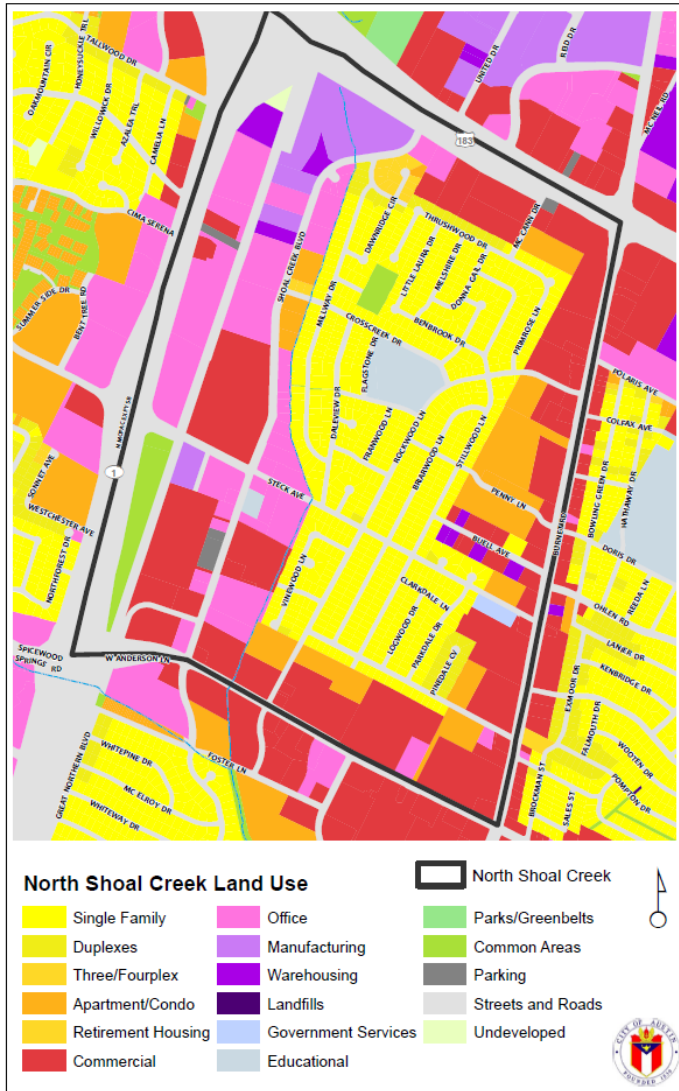
Percent of Households with Children



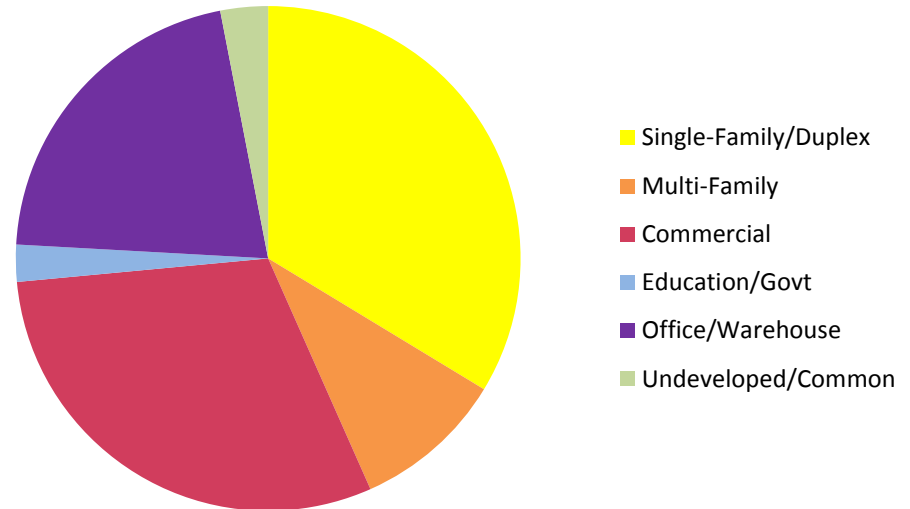
# North Shoal Creek Overview



# North Shoal Creek Overview



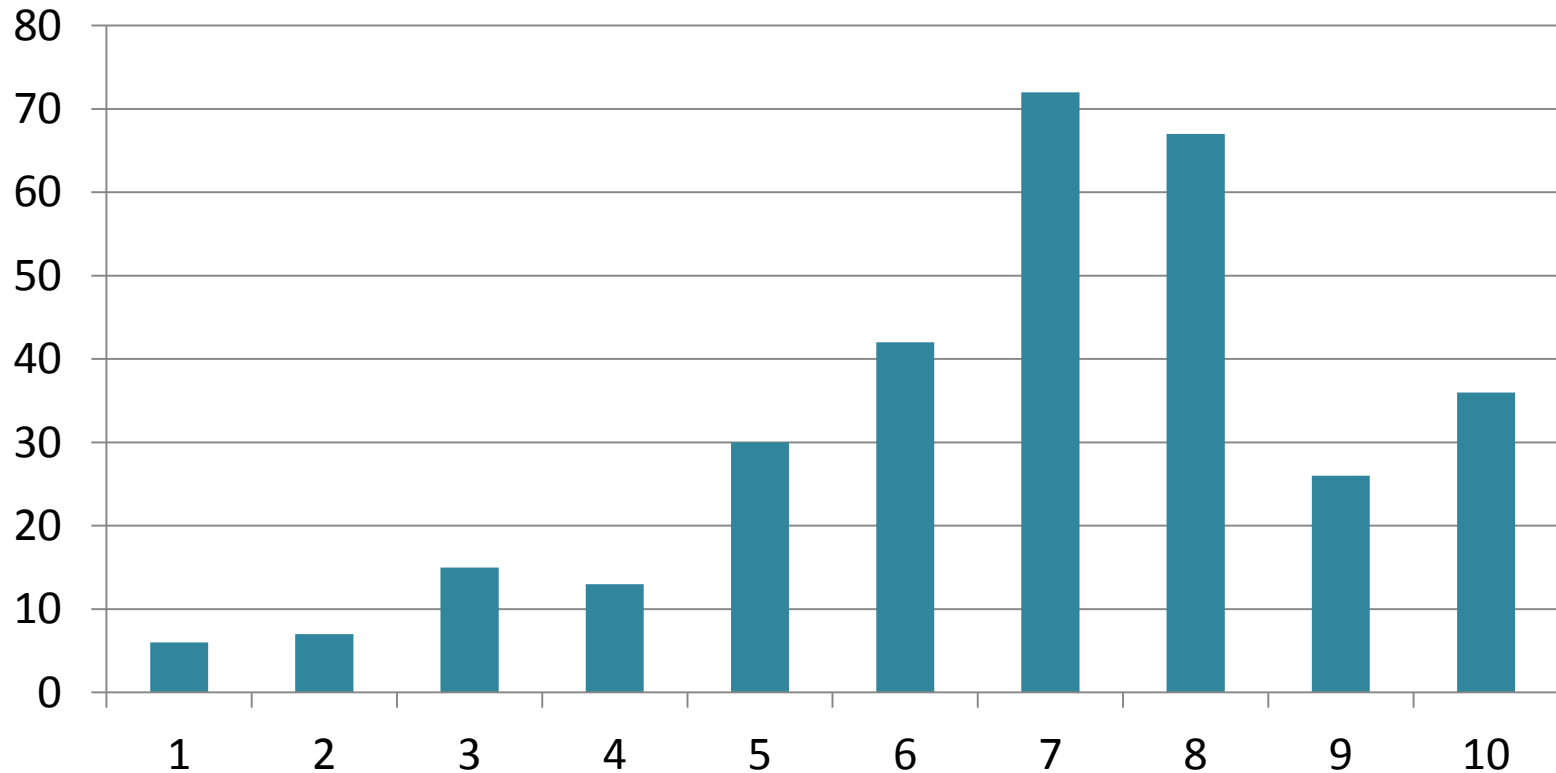
Land Area by Use Category



# Pilot Survey Results

## How complete is your Neighborhood?

- Average Response: 6.86 / 10



# Pilot Survey Results

---



## What would make your Neighborhood more complete?

- A complete sidewalk network that links people's homes to nearby goods and services (8.4/10)
- Better access to open space and parks (7.8/10)
- Better access to healthy foods and local produce (7.5/10)

# Pilot Survey Results

---

## What do you like best about your neighborhood?

- Mature Trees (9.2/10)
- Close to major roads (8.6/10)
- Convenient Shopping and Dining (8.2/10)
- Character/Layout of Buildings (8.0/10)
- Ease of travel within neighborhood (8.0/10)



**If you have not done so already,  
please complete the survey by**

**OCTOBER 7<sup>th</sup>**

**Online at [https://www.austintexas.gov/  
northshoalcreek](https://www.austintexas.gov/northshoalcreek)**

**Hardcopies available at  
The North Village Branch Library  
2505 Steck Avenue**



# Creating Our Ground Rules

---

## Group Discussion

# North Shoal Creek Neighborhood Planning Area

Meeting # 1 Exercises

# Today's Exercises

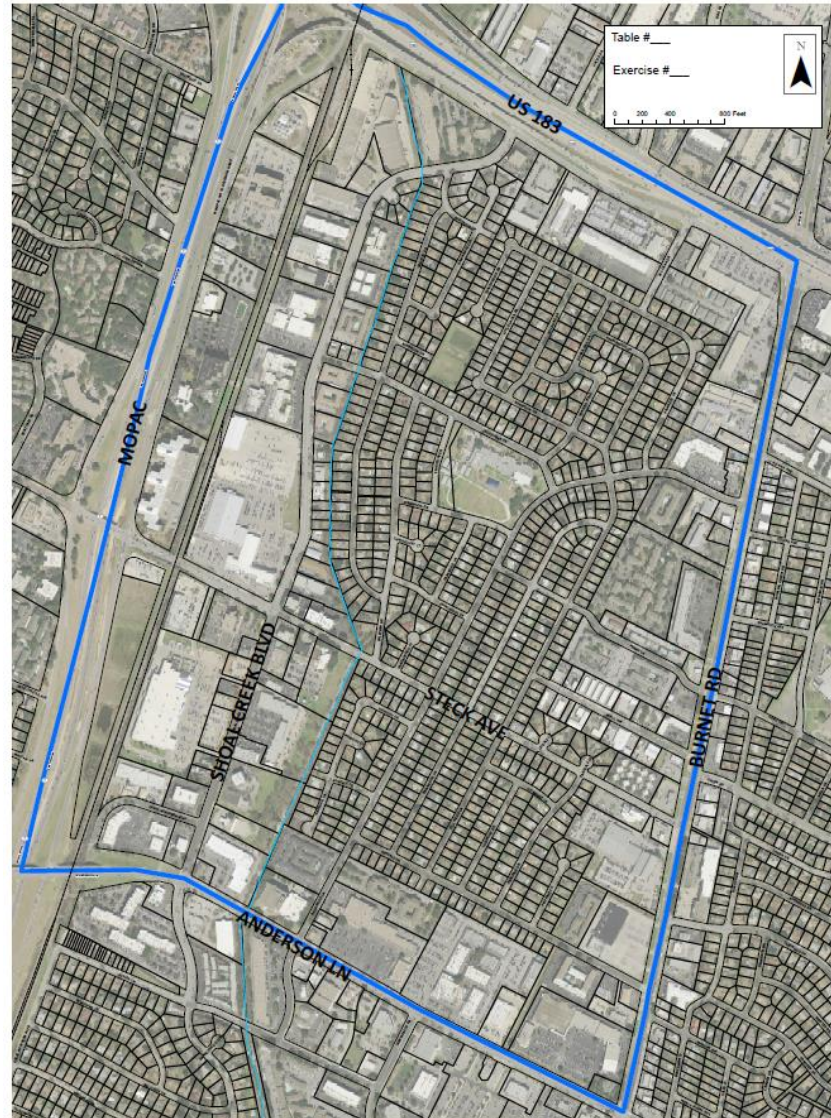
---

**EXERCISE #1:** How Complete Is Your Community?

**EXERCISE #2:** Mapping the Planning Area's Existing Conditions

**EXERCISE #3:** Mapping the Susceptibility to Change

# Today's Workshop Map



# EXERCISE #1

## *How Complete Is Your Community?*

Residences



Employment



Shopping



Learning



Open Space



Recreation



Services



Amenities



# EXERCISE #1

---

## *How Complete Is Your Community?*

### **Step #1:**

Discuss what complete community means—what characteristics are the most important to you?

# EXERCISE #1

---

## *How Complete Is Your Community?*

### Step #2:

Considering the description of a complete community, discuss what is **missing or needed**.

What's **already there**?

# EXERCISE #1

---

## *How Complete Is Your Community?*

### **Step #3:**

- Draw a black **DOT** on or near where you live, own a business, or own property
- Indicate on the map in **RED** where missing or needed elements should be located and label them
- Indicate on the map in **GREEN** where existing elements are presently located and label them



# Exercise #2 Existing Conditions

---

## Task 1

Using a BLACK marker, draw a **LINE** where there is excessive speeding and noise.

# Exercise #2 Existing Conditions

---

## Task 2

Using a **RED** marker, draw a **CIRCLE** around intersections that are a problem for drivers.

# Exercise #2 Existing Conditions

---

## Task 3

Using a BROWN marker, draw a **SQUARE** where there are pedestrian / vehicular conflicts.

# Exercise #2 Existing Conditions

---

## Task 4

Using a PURPLE marker, draw an 'X' where there is a perception or reality of crime.

# Exercise #2 Existing Conditions

---

## Task 5

Using an GREEN marker, draw an “X” where code violations are occurring.

# Exercise #2 Existing Conditions

---

## Task 6

Using an ORANGE marker, draw a STAR where current neighborhood centers are located.

# Exercise #2 Existing Conditions

---

## Task 7

Using a **BLUE** marker, draw a **DOT** where there are current flooding problems in the area.

# Exercise #3 Potential for Change

---

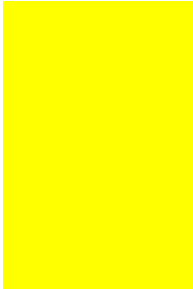
- Establish **POTENTIAL FOR CHANGE** on sites throughout the study area using the required colors.
- Please evaluate the potential for change for all **PARCELS AND BUILDINGS** based on their condition and a realistic consideration of the potential for redevelopment.



# Exercise #3 Example of a Potential for Change Map



Buildings and areas with no change expected



Areas where small changes and upgrades are possible



Areas where change is probable



# Reporting Out

---

- 1. What is one thing you learned that you didn't know before this meeting?**
- 2. What was your table's most important issue?**
- 3. What would you like to get out of this process?**

# Next Steps

---

- 1. Staff will compile, analyze, and summarize workshop and survey results**
- 2. Post results to project web site**
- 3. Coordinate with City departments on community input**

# Upcoming Meetings

---

- **November 12<sup>th</sup> — Transportation and Mobility**
- **December 3<sup>rd</sup> — Community Character and Land Use**
- **January 21<sup>st</sup>, 2017 — Tentative topics: Land Use, Community Character, CodeNEXT, and other issues**