

## Project Service Area Detail

The Project Service Area is defined by the locations of the sewershed that is treated at the SAR WWTP. Since the facility serves approximately half of Austin, the benefits of the project will extend beyond just single-family residences to businesses that provide income for the LMI residents, services industries, schools, healthcare and government agencies that support LMI persons. Also, keeping the SHEC in operation provides health benefits, improves safety, and literally powers the economy that provides opportunities for LMI households.

The following map shows the boundaries of the Project Area by Census Block Group, shown here as color coded polygons to indicate LMI percentages. Of the total population in the Project Area, 51.56% meet the criteria for Low- and Moderate-Income benefit.

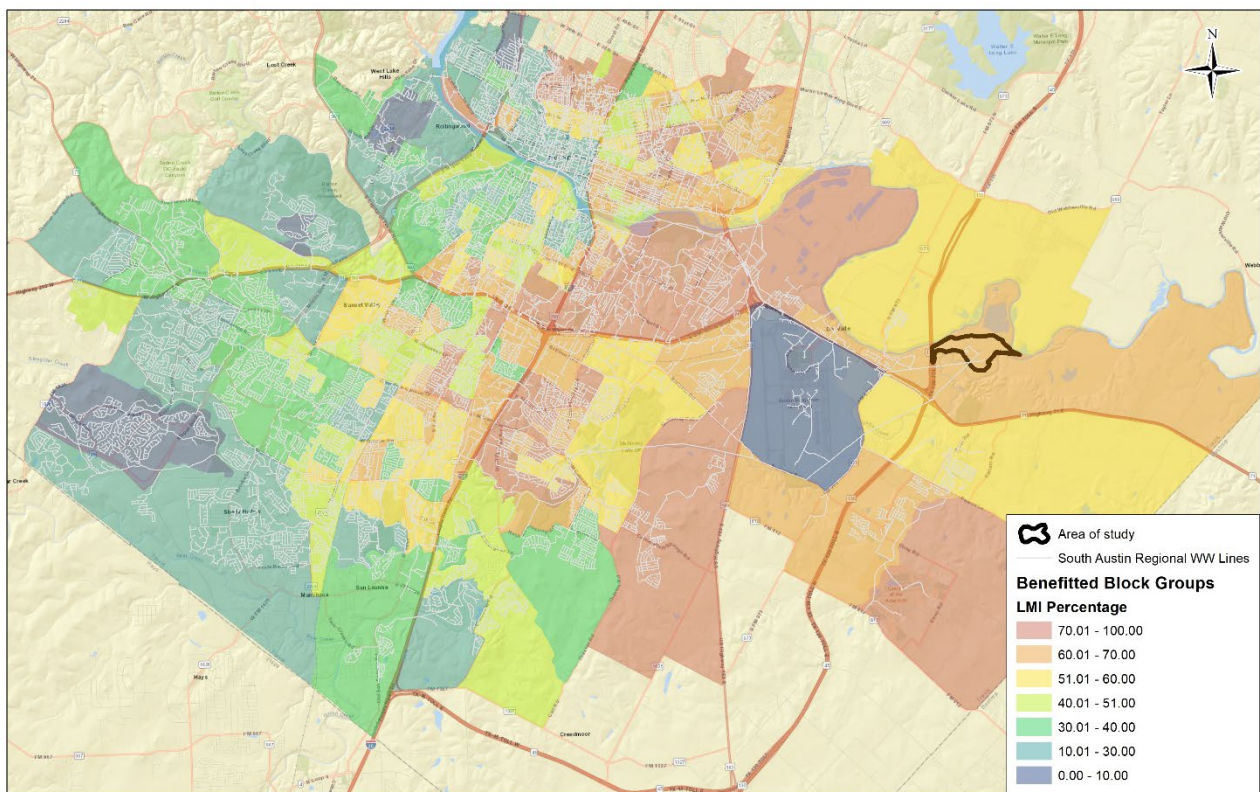


Figure 9: Project Service Area

The criteria for definition of the Project Area is as follows:

- Benefit to Census Blocks with Low-and-Moderate Income populations
- Proximity to major population centers
- Local critical infrastructure and at-risk populations.

The project service area is bounded by the Census Geographic Areas (CGA) as outlined in Table 2 below.

Table 2: Summary of Project Service Areas Census Geographic Areas

Block Group	Census Tract	Population	LMI Percentage	LMI Population	Block Group	Census Tract	Population	LMI Percentage	LMI Population
1	4.01	1700	35%	591	2	17.75	811	16%	126

Block Group	Census Tract	Population	LMI Percentage	LMI Population	Block Group	Census Tract	Population	LMI Percentage	LMI Population
2	4.01	3031	85%	2581	1	17.76	1673	50%	829
1	4.02	1563	53%	829	2	17.76	1269	33%	412
2	4.02	770	67%	517	1	17.77	3761	33%	1229
3	4.02	1026	45%	460	2	17.77	2130	31%	662
1	5	1111	95%	1050	1	19.01	1589	33%	528
3	5	951	46%	435	2	19.01	2263	39%	891
1	6.01	1383	85%	1182	3	19.01	1831	20%	366
2	6.01	7918	89%	7038	2	19.08	6476	38%	2447
1	6.03	2077	96%	1992	1	19.1	958	18%	174
2	6.03	2028	99%	2012	2	19.1	1423	28%	403
3	6.03	2001	98%	1967	3	19.1	1551	18%	279
4	6.03	821	88%	724	4	19.1	1130	30%	340
5	6.03	2733	99%	2717	1	19.11	1639	44%	727
1	6.04	1410	96%	1348	2	19.11	1239	32%	391
2	6.04	2573	100%	2573	1	19.14	3992	10%	403
3	6.04	3337	100%	3337	2	19.14	996	2%	22
1	7	1553	53%	824	3	19.14	2387	25%	591
1	8.01	1793	56%	1006	1	19.15	4134	42%	1754
1	8.02	1357	51%	686	2	19.18	819	32%	258
2	8.02	811	77%	628	1	19.19	1496	15%	217
3	8.02	1273	88%	1114	2	19.19	1665	6%	97
1	8.03	1912	68%	1307	3	19.19	613	7%	41
2	8.03	914	59%	541	1	20.02	1858	32%	589
3	8.03	719	48%	344	2	20.02	1195	65%	778
1	8.04	1318	74%	978	1	20.03	1816	49%	899
2	8.04	1301	54%	702	2	20.03	2759	73%	2001
1	9.01	957	57%	548	1	20.04	2847	70%	1993
2	9.01	2129	49%	1053	2	20.04	671	72%	480
1	9.02	2031	84%	1712	1	20.05	2491	55%	1373
2	9.02	2361	66%	1565	2	20.05	1430	67%	959
3	9.02	1677	75%	1250	3	20.05	1954	73%	1420
4	9.02	4234	61%	2582	1	21.07	1046	76%	791
1	10	612	65%	399	1	21.09	1033	58%	597
2	10	772	48%	367	2	21.09	1797	63%	1128
3	10	961	65%	623	3	21.09	1561	81%	1269
4	10	622	49%	304	1	21.1	3128	68%	2118
5	10	930	60%	561	2	21.1	1568	68%	1067
1	11	6227	14%	885	1	21.11	2308	81%	1868
2	11	2721	27%	723	2	21.11	1533	63%	967
1	12	1335	60%	806	3	21.11	2280	57%	1309
2	12	4275	21%	916	2	22.07	10009	57%	5718
3	12	898	20%	182	1	23.04	2430	84%	2047
1	13.03	1710	36%	609	2	23.04	3204	53%	1690
2	13.03	4125	36%	1502	3	23.04	1829	91%	1659
3	13.03	706	17%	119	1	23.07	1681	74%	1250
1	13.04	1699	40%	676	2	23.07	2464	77%	1904
2	13.04	932	33%	311	3	23.07	968	93%	896
3	13.04	692	43%	297	4	23.07	1544	71%	1100

Block Group	Census Tract	Population	LMI Percentage	LMI Population	Block Group	Census Tract	Population	LMI Percentage	LMI Population
4	13.04	915	37%	342	1	23.08	1064	61%	647
1	13.05	1897	59%	1125	2	23.08	1145	59%	681
2	13.05	1686	55%	934	3	23.08	2357	82%	1931
3	13.05	1943	49%	954	4	23.08	2688	74%	2001
4	13.05	1439	24%	345	1	23.1	825	63%	516
1	13.07	1142	65%	748	2	23.1	2798	80%	2252
2	13.07	664	48%	322	1	23.12	1767	78%	1379
3	13.07	2228	52%	1155	2	23.12	3429	81%	2779
1	13.08	550	43%	239	3	23.12	3535	86%	3036
2	13.08	606	44%	265	1	23.13	2138	75%	1606
3	13.08	1914	69%	1323	2	23.13	2903	92%	2674
4	13.08	637	51%	324	1	23.14	706	100%	706
1	14.01	2364	47%	1111	2	23.14	2773	75%	2091
2	14.01	1147	26%	301	3	23.14	832	87%	726
1	14.02	910	25%	226	4	23.14	1401	97%	1359
2	14.02	751	40%	299	1	23.15	1442	69%	998
3	14.02	1171	65%	756	2	23.15	1918	89%	1703
1	14.03	793	80%	636	1	23.16	2081	82%	1699
2	14.03	953	60%	574	2	23.16	1622	80%	1301
1	16.02	1152	29%	331	3	23.16	1786	91%	1620
2	16.02	1172	24%	282	1	23.17	4530	87%	3921
3	16.02	1223	90%	1103	2	23.17	1595	100%	1595
2	16.03	767	11%	87	1	23.18	3760	87%	3256
3	16.03	716	12%	86	2	23.18	2991	89%	2660
4	16.03	829	18%	150	1	23.19	1928	0%	0
5	16.03	1592	9%	138	1	24.02	1077	46%	497
1	16.04	1239	17%	208	2	24.02	2866	50%	1425
3	16.04	1023	11%	112	3	24.02	965	80%	769
4	16.04	939	20%	186	4	24.02	4051	65%	2627
1	16.05	1496	36%	537	1	24.03	1855	65%	1213
2	16.05	977	13%	124	2	24.03	1400	35%	489
3	16.05	639	15%	96	1	24.07	7873	37%	2927
4	16.05	939	37%	350	2	24.07	2498	37%	921
1	16.06	380	0%	0	1	24.09	1273	44%	557
1	17.12	1281	38%	493	2	24.09	1234	53%	651
2	17.12	1941	65%	1263	3	24.09	1105	68%	753
3	17.12	887	59%	521	1	24.1	2173	73%	1585
1	17.13	2238	52%	1155	2	24.1	1932	78%	1505
2	17.13	735	41%	300	1	24.11	2210	67%	1481
3	17.13	1813	43%	772	2	24.11	2317	80%	1848
1	17.28	1027	31%	314	3	24.11	2099	83%	1749
2	17.28	1388	58%	810	1	24.12	1439	67%	961
3	17.28	1245	18%	228	2	24.12	1687	67%	1122
4	17.28	2743	29%	788	3	24.12	2807	76%	2128
5	17.28	1495	37%	554	1	24.13	1427	100%	1427
1	17.29	1750	30%	530	2	24.13	2084	82%	1707
2	17.29	1031	43%	438	3	24.13	1077	61%	662
3	17.29	2201	38%	845	1	24.19	2466	79%	1951

Block Group	Census Tract	Population	LMI Percentage	LMI Population	Block Group	Census Tract	Population	LMI Percentage	LMI Population
2	17.33	1397	46%	636	2	24.19	1869	79%	1473
1	17.37	1411	35%	488	1	24.21	6268	57%	3602
2	17.37	5212	15%	779	2	24.21	2992	19%	574
3	17.37	4370	13%	567	3	24.21	1511	32%	481
1	17.38	997	18%	177	1	24.22	2174	54%	1178
2	17.38	939	37%	343	2	24.22	2543	66%	1688
3	17.38	1329	16%	217	3	24.22	2160	54%	1168
4	17.38	2542	16%	399	1	24.23	1720	39%	679
5	17.38	1053	35%	372	2	24.23	2400	65%	1549
1	17.4	2389	33%	777	3	24.23	2647	60%	1586
2	17.4	2886	21%	599	1	24.24	958	52%	498
1	17.46	2940	32%	930	2	24.24	2896	65%	1882
2	17.46	1562	49%	762	1	24.25	3416	49%	1684
1	17.47	2981	58%	1725	2	24.25	2011	31%	626
2	17.47	782	36%	284	1	24.26	9085	35%	3205
3	17.47	1844	40%	742	2	24.26	1229	60%	739
1	17.48	2262	16%	359	1	24.27	1870	79%	1473
2	17.48	4467	42%	1882	2	24.27	2106	56%	1175
1	17.49	1300	31%	398	3	24.27	3279	75%	2468
2	17.49	1051	35%	363	4	24.27	2436	68%	1650
3	17.49	2159	22%	479	1	24.28	1599	20%	327
4	17.49	1674	25%	415	2	24.28	6916	50%	3477
1	17.5	1490	21%	313	1	24.29	2901	40%	1164
2	17.5	1935	55%	1064	1	24.3	669	51%	344
3	17.5	2053	41%	841	2	24.3	663	84%	556
1	17.69	3009	34%	1010	3	24.3	2040	77%	1561
2	17.69	5223	16%	827	1	24.31	2712	60%	1627
1	17.7	7732	9%	707	2	24.31	3524	61%	2165
2	17.7	2348	9%	207	3	24.31	5014	59%	2970
3	17.7	2358	8%	181	1	24.32	3145	76%	2405
1	17.72	2349	29%	686	1	24.33	2110	67%	1405
2	17.72	2420	46%	1104	2	24.33	5689	51%	2905
1	17.74	1111	29%	321	1	24.35	3109	80%	2492
2	17.74	5669	17%	967	2	24.35	6591	64%	4241
3	17.74	2171	14%	293	1	9800	1	0%	0
1	17.75	8403	11%	944					
Total Population Benefitted = 557,807									
Total LMI Population Benefitted = 287,579									

### Added Resiliency Measures

The City and its partners have committed approximately 56% of the proposed budget for this project. The City is proactively seeking solutions to further protect these facilities with its partners including FEMA and TCEQ. The City has spent significant funding to study the area and maximize the effectiveness of the proposed solutions while seeking additional local funding sources that will be used to increase the level of protection in the future by further reducing the flood risk from Onion Creek and reducing the impact of local severe rainfall events.