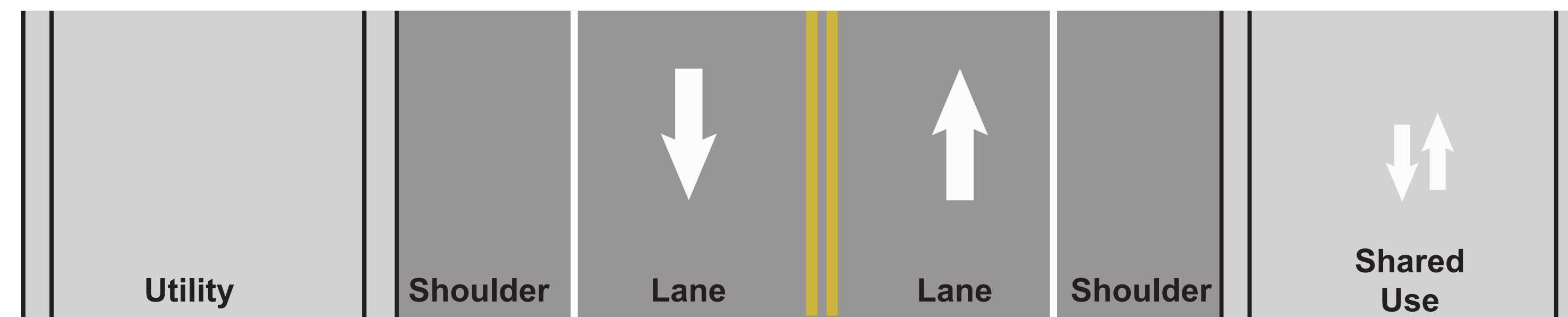
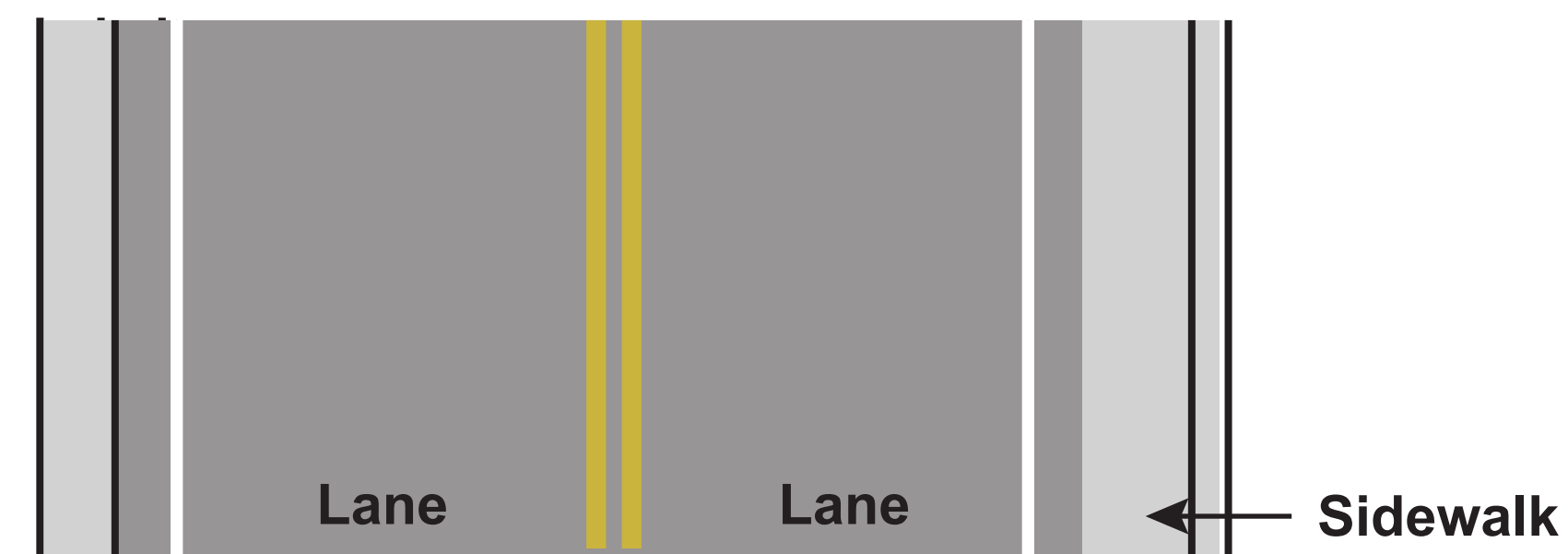
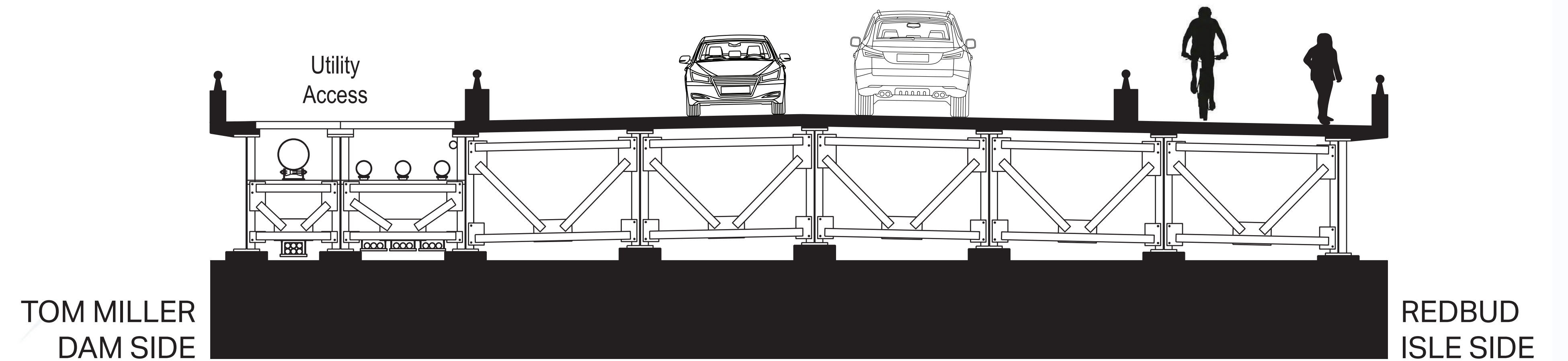
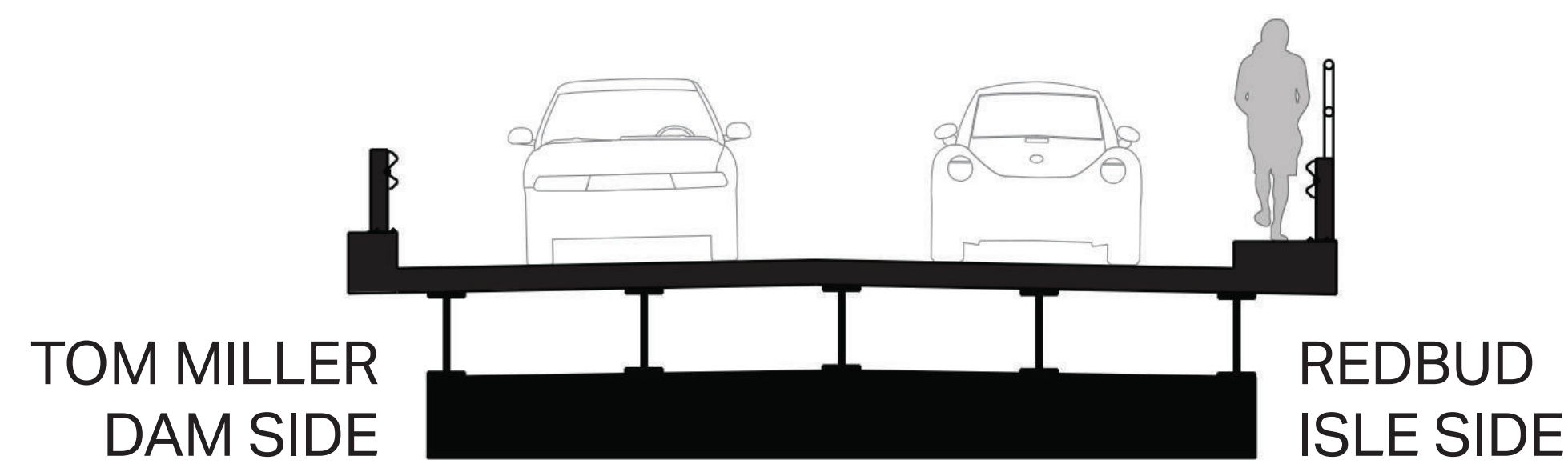




# Redbud Trail Bridge Project

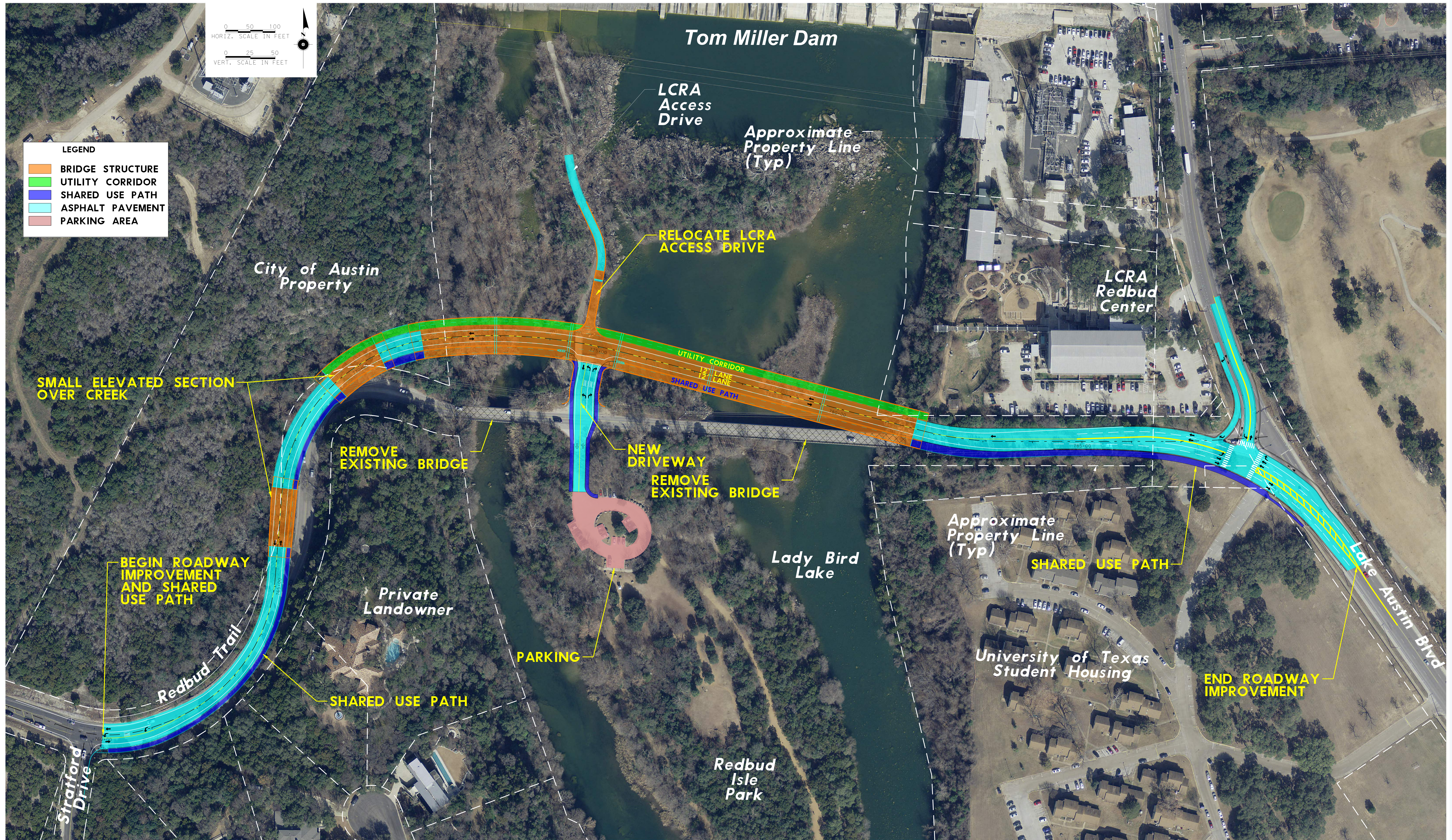
## Cross Sections: Before and After







# Redbud Trail Bridge Project







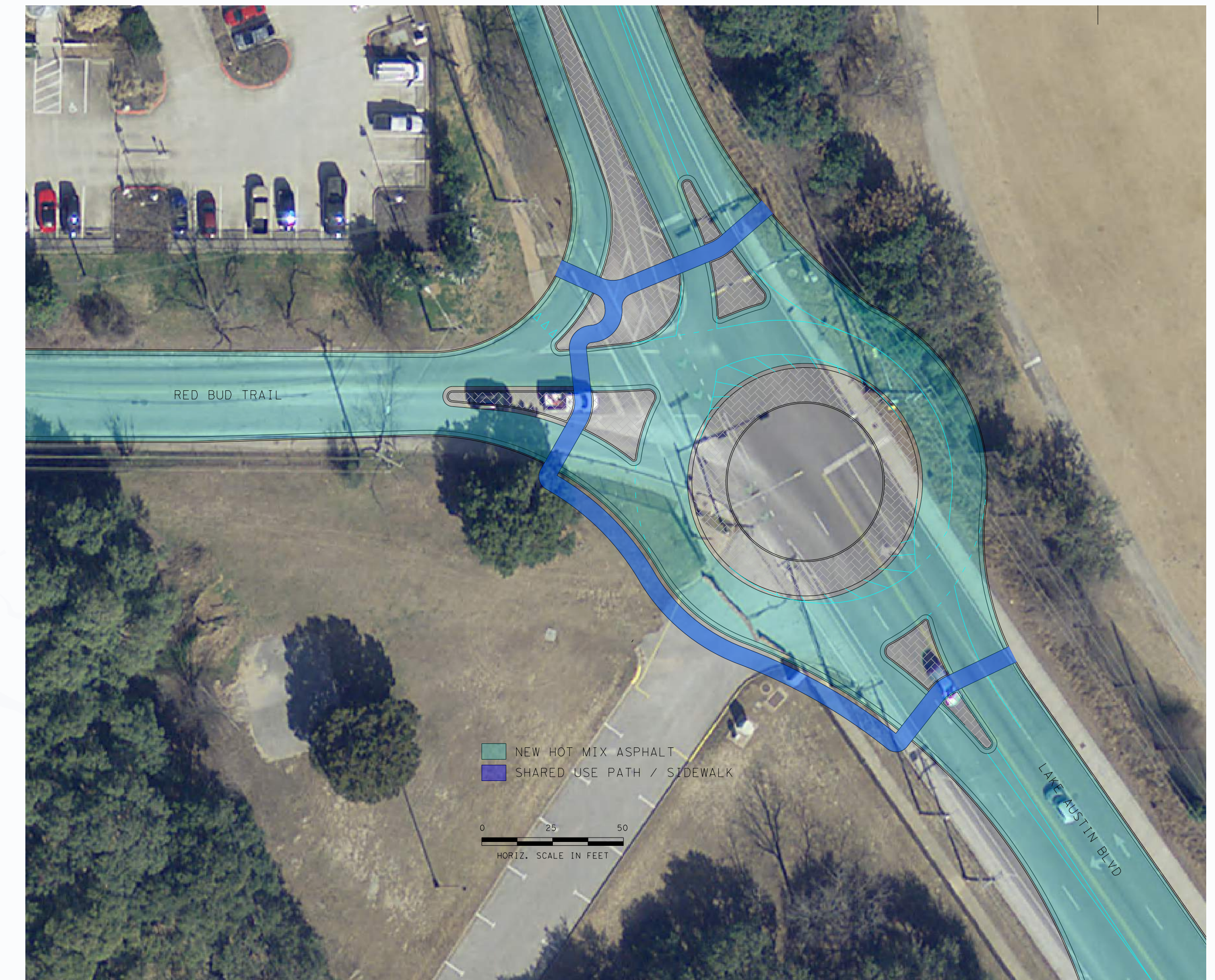
# Redbud Trail Bridge Project

## Lake Austin Blvd. / Redbud Trail Intersection Alternatives Evaluation



### ***Preferred Alternative: Roadway Realignment***

- Provides best reduction in delays, especially at high demand times such as the PM rush hour.
- Allows more traffic through the intersection between Lake Austin Blvd and Redbud Trail.



### ***Alternative Not Selected: Roundabout***

- Worsens southbound delays in the PM rush hour and presents additional ROW and operational constraints