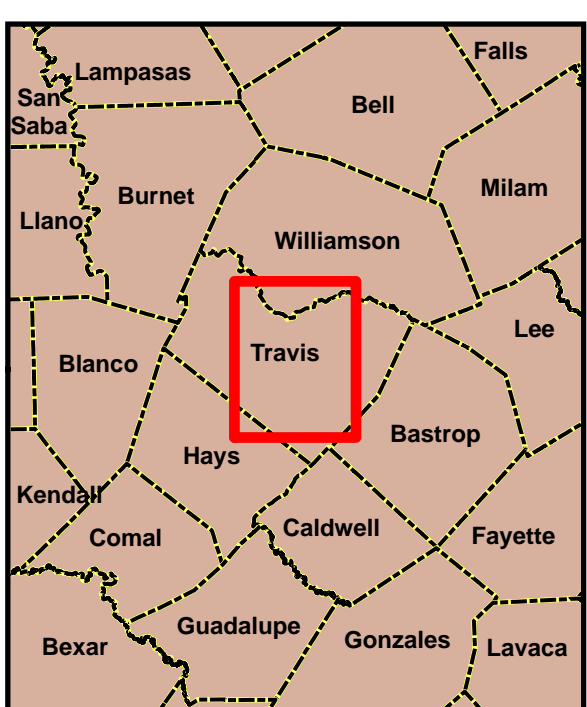
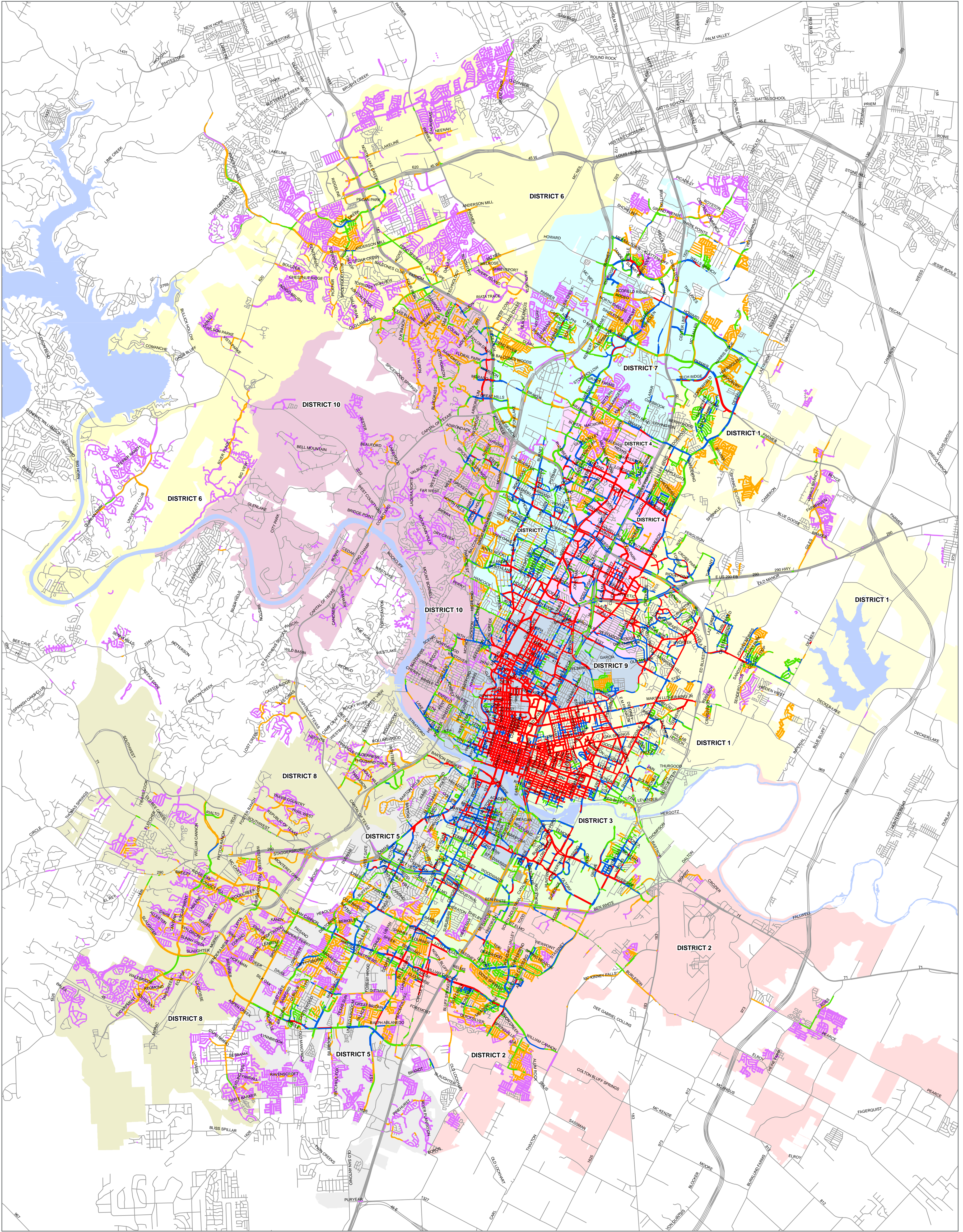
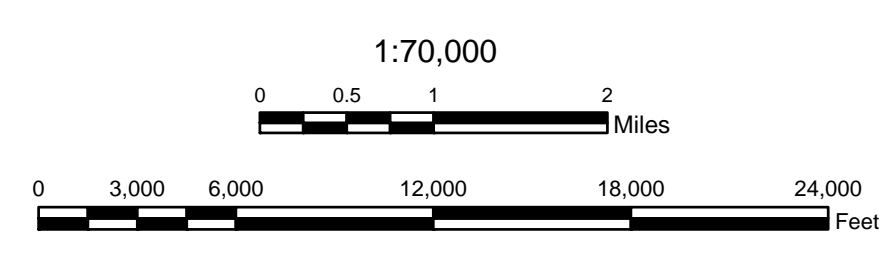


City of Austin Sidewalk Plan Existing Sidewalk Scoring Results July 2016

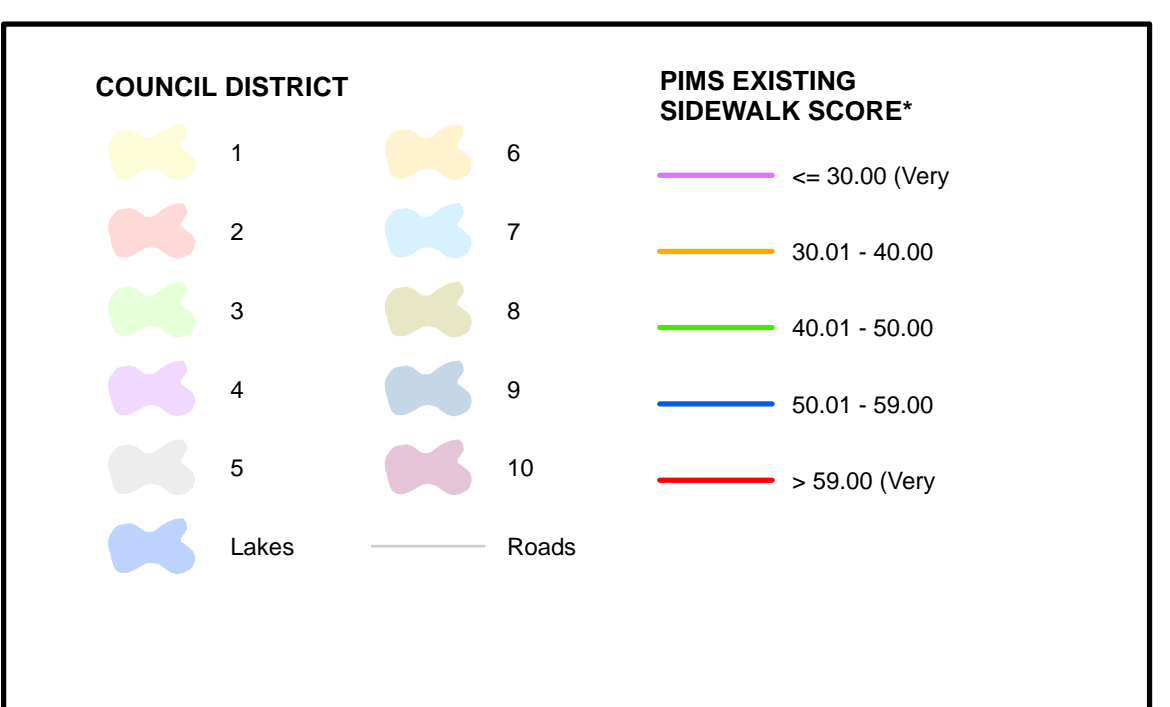


N

HDR makes no representations or warranties regarding accuracy or completeness of the information depicted on this map or data from which it was produced. This map is NOT suitable for survey purposes and does not purport to depict or establish boundaries between land owners or locations of utility infrastructure where survey data is available and field locations have been established.



PRIORITIZATION RANKINGS ARE INTENDED AS A TOOL TO ALLOCATE LIMITED CITY OF AUSTIN SIDEWALK RESOURCES. JUST BECAUSE A PARTICULAR SECTION OF SIDEWALK IS RANKED AS A LOWER PRIORITY DOES NOT MEAN IT IS NOT A NECESSARY COMPONENT OF A COMPLETE PEDESTRIAN NETWORK. CONSISTENT WITH CITY OF AUSTIN COMPLETE STREETS POLICIES ALL PRIVATE AND PUBLIC DEVELOPMENT, REDEVELOPMENT, AND CAPITAL IMPROVEMENT PROJECTS SHOULD INCLUDE ADA COMPLIANT SIDEWALKS (OR URBAN TRAILS WHERE APPROPRIATE) ALONG THE FULL LENGTH OF EVERY ROAD FRONTAGE (UNLESS ALTERNATIVE COMPLIANCE IS SPECIFICALLY AUTHORIZED BY CITY CODES).



* Driveways are not included in the Scoring shown on this map.