

Greys Paper Recycling Industries LP

# INVESTOR'S PRESENTATION





# AGENDA

CONCEPT



What is “Closed Loop Recycling...?”

“Closed Loop” recycling allows for the recycling of waste products with little to no loss of materials. Currently, paper can only be recycled 6 to 7 times.

With Greys method, paper can be recycled endlessly, without the significant loss of material and no use of chemicals. Thus, there is a drastic reduction in negative environmental damage.

Advantages of “Closed Loop” Recycling...

It takes 24 full grown trees to produce one ton of office paper, and each year thousands of tons of paper are produced in Alberta alone. By recycling office waste paper, it is possible to vastly reduce the negative environmental impact.

Additionally, Greys recycling method uses no toxic chemicals, creates no harmful byproducts and is stronger than regular paper.



## How do we recycle paper...?

Greys collects paper from local offices and white linens from hotels and combines them to make %100 recycled photo copy paper. The best part is - no harsh chemicals are used! Fibers in linens help whiten the paper and strengthen it's structural integrity. After waste paper is processed into pulp, it becomes light grey in appearance – which gives Greys it's name! We do not de-ink the paper, our process for this is completely mechanical. This process is similar to how things were done a thousand years ago, but Greys will be using a process that is entirely eco-friendly.



FACILITY

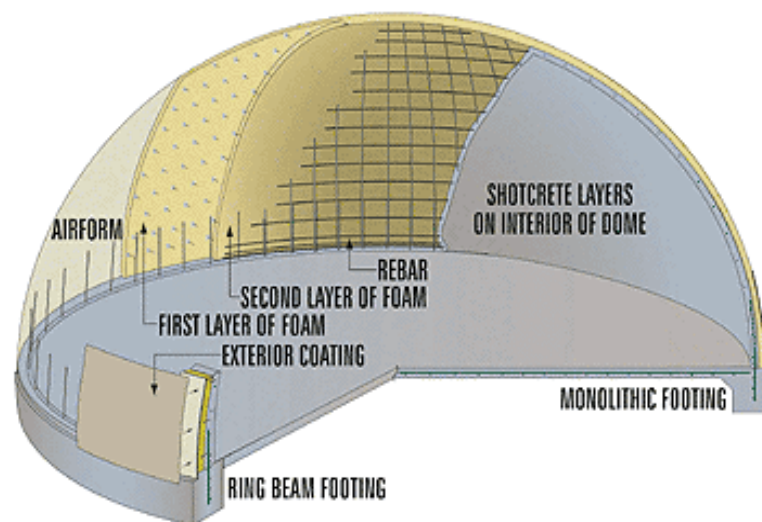




## Our facility: The Monolithic Dome

- Durable
- Economic
- Energy Efficient

The dome can withstand natural and man-made disasters; impervious to forces such as earthquakes. In keeping with the vision of Greys Recycling we have chosen a unique structure to house our paper facility. The Monolithic Dome has high thermal properties that will support our efforts to conserve energy. An added feature – it is eye catching and memorable marketing as we continue to be the hot spot for tours at Edmonton Waste Management.



## The Facility

- Land Area- 27,000 sq. Meters.
- Size of the Main Dome – 50,000 sq. ft.
- Diameter of the Dome- 252 ft.
- Height of the Dome- 84 ft.
- Size of the second Dome for Utility Products.
  - Diameter 112 ft.
  - Size of the dome 10,000 sq. ft.
  - Height 38 ft.



Greys facility is the largest industrial dome in the world, and one of the most eco-friendly buildings on the earth today. It took 8 weeks to build the large dome and only four-and-a-half hours to inflate.



## Support of the Local Government...

*The City of Edmonton's Contributions.*

Long Lease of 7 + acres of land at the World Class Edmonton Waste Management Centre.



Waste Paper & Waste Glass from the City's Collection Process.

Liaison with Local Businesses and other nearby communities to contribute waste paper and used cotton clothes and waste glass.

5 million dollar contribution from the City of Edmonton.

COMMUNITY



## Local Businesses...

### *Joining the loop!*



Many businesses have joined the loop to help Greys achieve it's vision: locally made, locally used, and locally recycled. By using Greys method, cities all over the world will be able to have their own outlet where they can bring in their own waste, and walk out with %100 new post-consumer product.

In Edmonton, businesses such as IKEA, Best Western, Costco Wholesale, and Kal Tire have already signed up to provide Greys with their waste materials.

# ECONOMICS

## ECONOMICS?



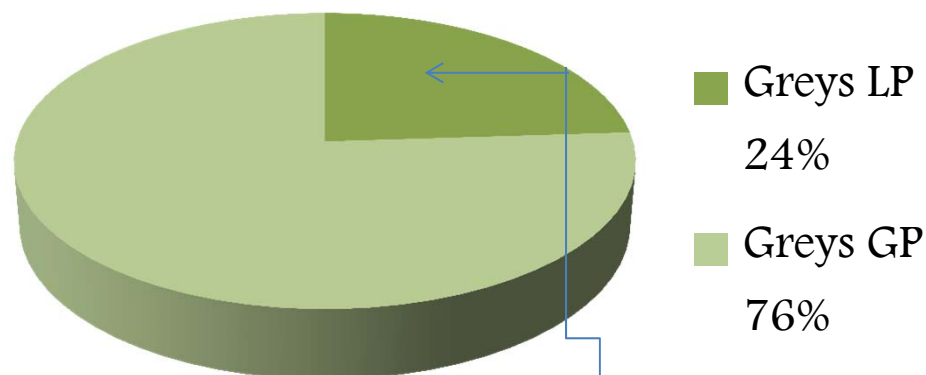


## Market share of Greys...

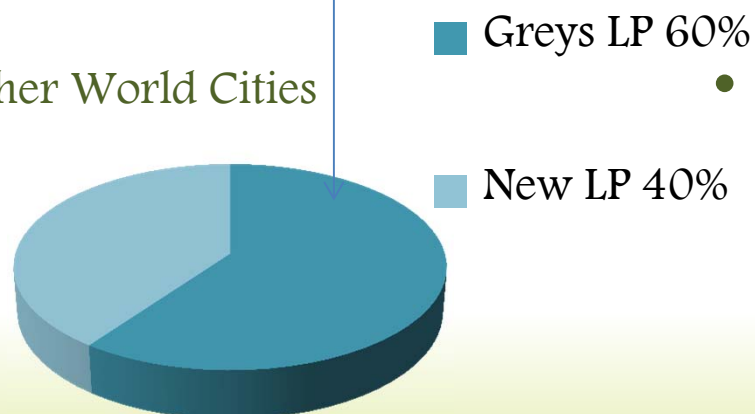
- Greys plan to target initially just 10% of office stationeries in any particular city.
- Per capita consumption of paper in Canada is 243 Kgs
- Every city employee uses 1.5 Lbs. of paper product daily.



## Edmonton



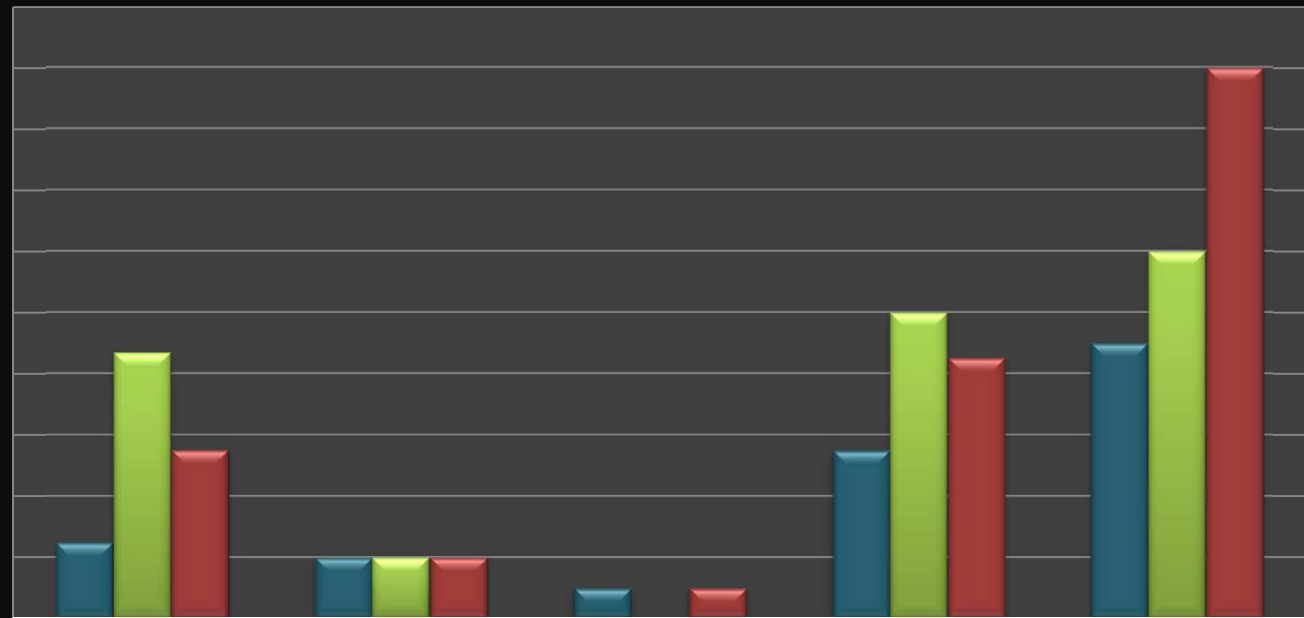
## U.S. Cities & Other World Cities



- The project to be licensed will be duplicated in practically every city in North America and then around the world! That means no matter how far Greys expands, even across the globe, you will make profits from every facility!
- LP Unit Holders will also have the first right for refusal for any new licensing, and profit of licensing shall be shared with our present LP Unit Holders.

## Competitors VS Greys

\$2,000  
\$1,800  
\$1,600  
\$1,400  
\$1,200  
\$1,000  
\$800  
\$600  
\$400  
\$200  
\$0



	Raw Materials	Conversion	Miscellenous Cost	Total Cost	Selling Price
Greys Paper	\$250	\$200	\$100	\$550	\$900
Wood Pulp Paper	\$870	\$200	\$0	\$1,000	\$1,200
%100 Post-Consumer Paper	\$552	\$200	\$100	\$852	\$1,800

%100 Post-Consumer Recycled Paper sold in retail stores is factually composed of %45 paper waste, added to %55 virgin wood pulp. With Greys method, utterly no trees are cut and no virgin pulp is used.

## Join the Loop!

*Do you want to become a part of the exciting  
venture?*

- Limited Partnership units are offered at Minimum investment of **\$ 10,000** per Unit.
- Return on Investment to the tune of **22 to 24 %**
- Lower gestation period – less than **12 months**
- Additional revenue generated through
- Licencing, Carbon Credits (Million Plus per Year ) will be shared with LP Holders in same ratio.
- 100% Losses to the LP Holders
- Profits to be distributed to LP Holders first.

# CONCLUSION

Greys Paper Recycling provides a high-growth, local, environmentally-friendly, and sustainable investment opportunity.

Thank you for coming out to learn about this exciting investment opportunity. We look forward to working with you!

