

Non-Radioactive Hazardous Materials Route Designation Study



▶ Purpose of the study is to:

- **Designate** roadways for through-routing of NRHM in Austin without unduly burdening commerce
- **Minimize** potential for vehicular incidents involving NRHM
- **Minimize** consequences to all Austin residents should an NRHM incident occur
- **Maximize** public safety in relation to NRHM transport



Non-Radioactive Hazardous Materials Route Designation Study



▶ Process guided by stakeholders and public involvement:

- Steering Committee



- Stakeholder Working Group

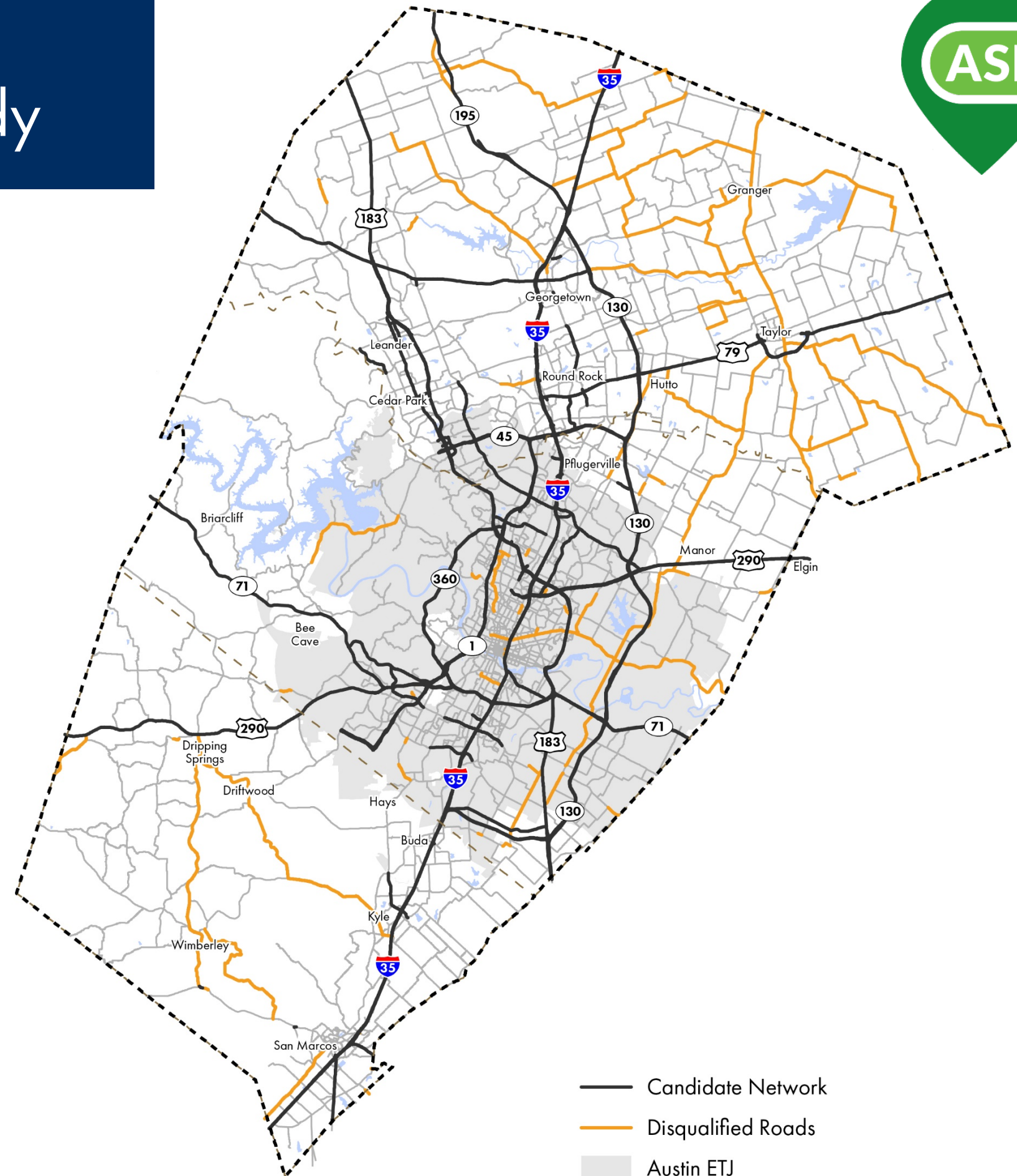


- Outreach to City Council and City of Austin Boards and Commissions
- Presentations to Local Emergency Planning Committees
- Series of Public Open Houses throughout the study

Non-Radioactive Hazardous Materials Route Designation Study



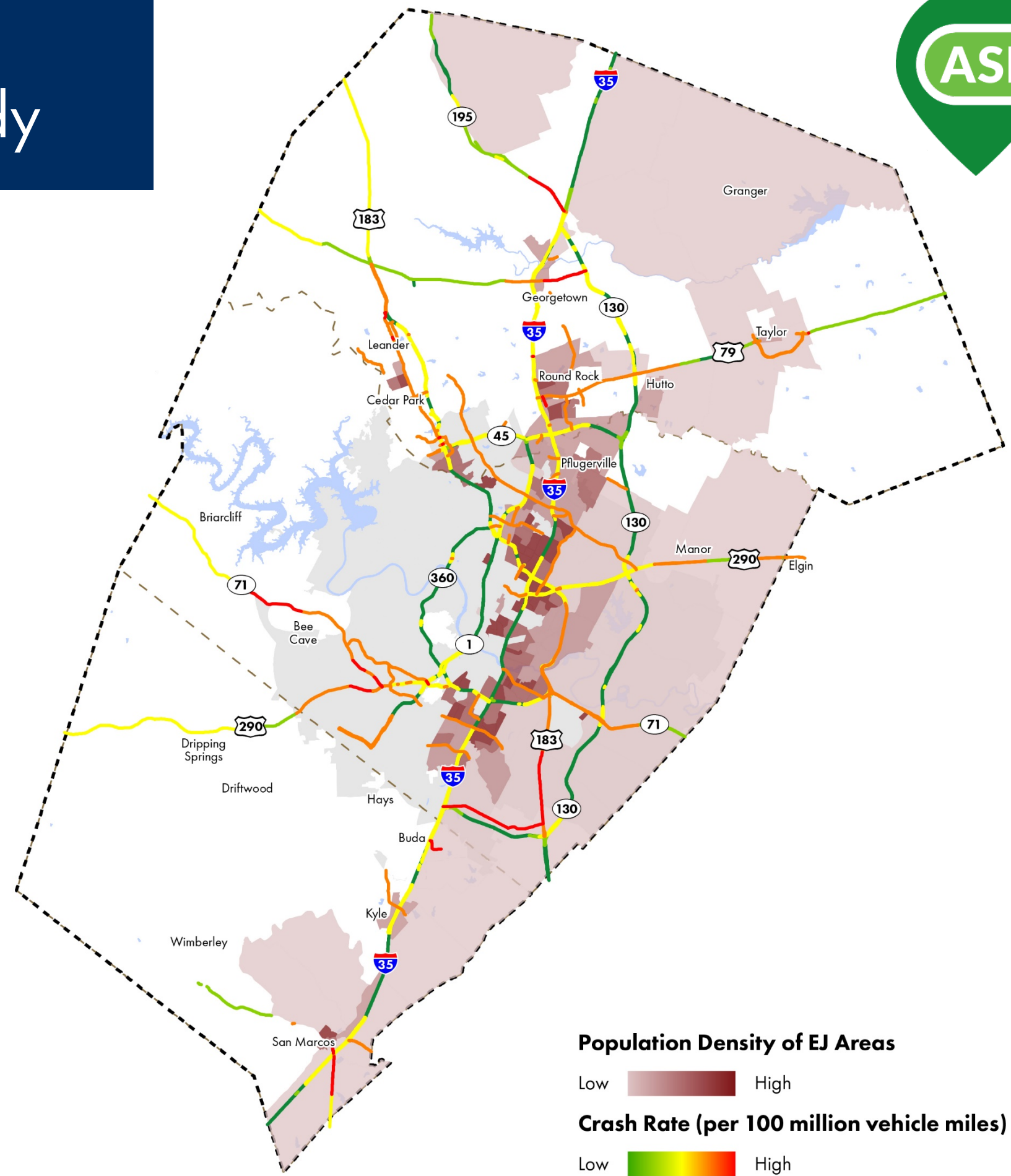
- ▶ Process of designating an NRHM includes:
 1. Identifying a candidate roadway network



Non-Radioactive Hazardous Materials Route Designation Study



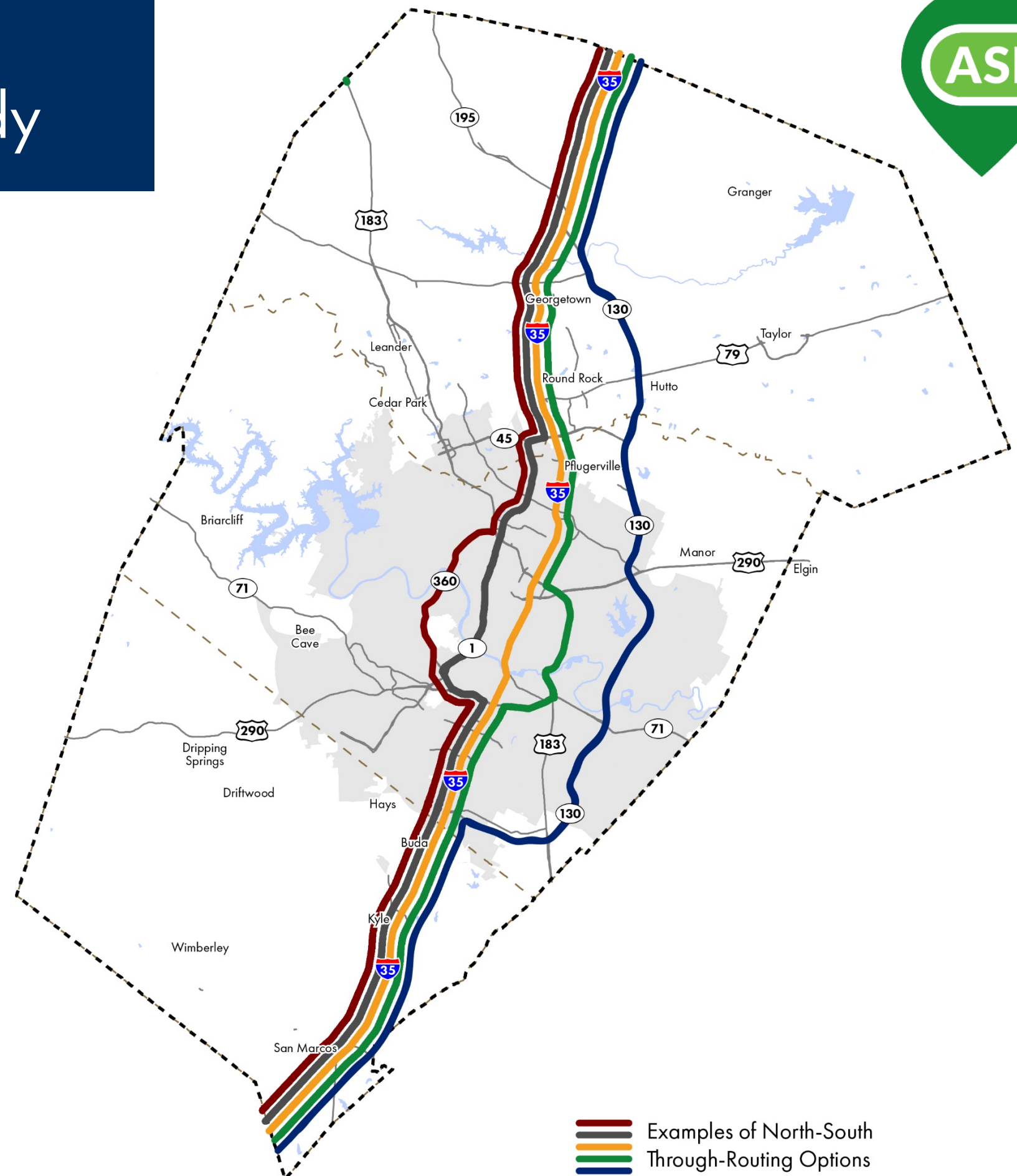
- ▶ Process of designating an NRHM includes:
 1. Identifying a candidate roadway network
 2. Calculating crash probability and potential exposure along the network



Non-Radioactive Hazardous Materials Route Designation Study



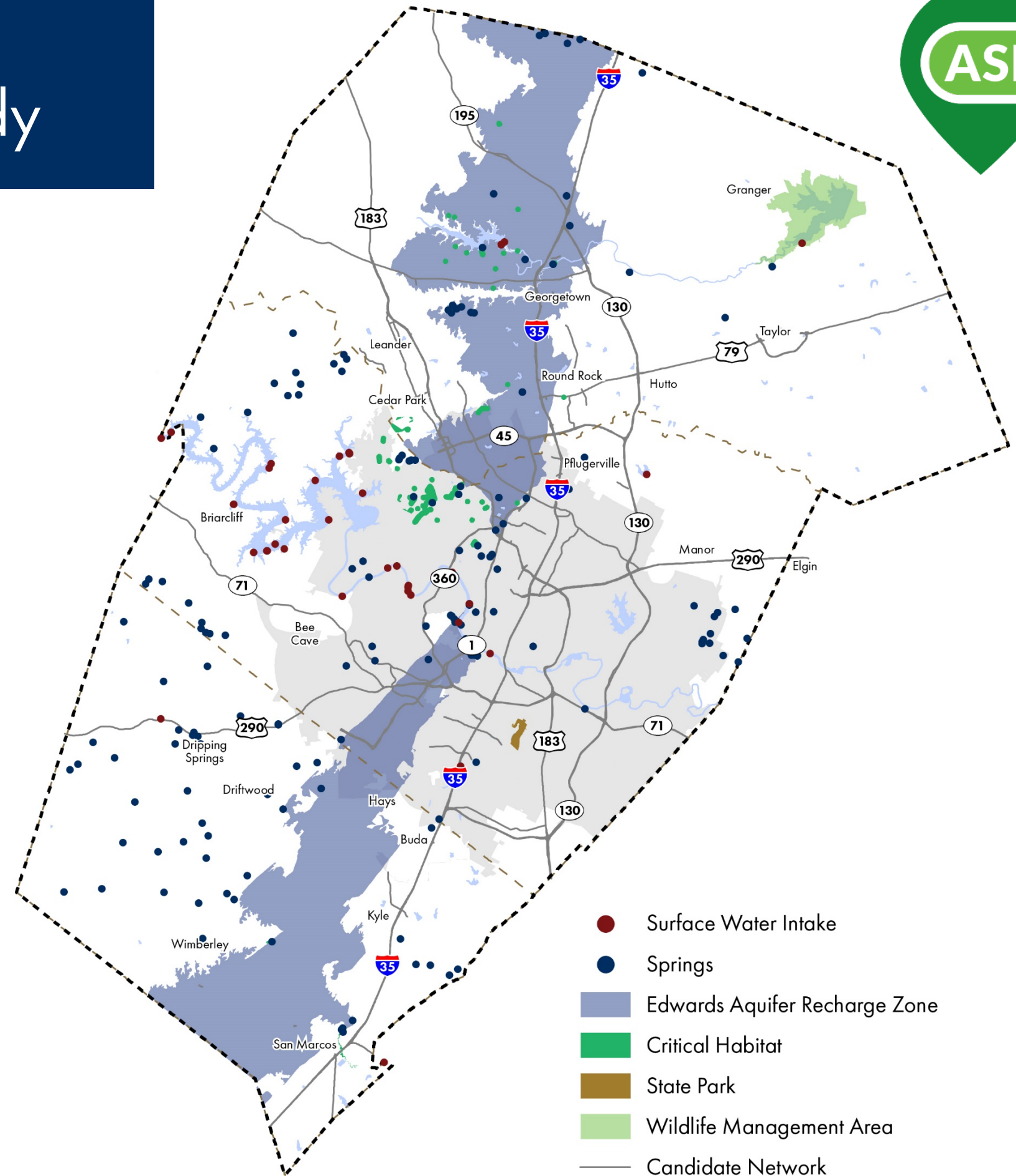
- ▶ Process of designating an NRHM includes:
 1. Identifying a candidate roadway network
 2. Calculating crash probability and potential exposure along the network
 3. Identifying a route that minimizes the crash probability and potential exposure



Non-Radioactive Hazardous Materials Route Designation Study



- ▶ Process of designating an NRHM includes:
 1. Identifying a candidate roadway network
 2. Calculating crash probability and potential exposure along the network
 3. Identifying a route that minimizes the crash probability and potential exposure
 4. Analyzing additional factors such as potential environmental impacts and emergency response capabilities



Non-Radioactive Hazardous Materials Route Designation Study



- ▶ Process of designating an NRHM includes:
 1. Identifying a candidate roadway network
 2. Calculating crash probability and potential exposure along the network
 3. Identifying a route that minimizes the crash probability and potential exposure
 4. Analyzing additional factors such as potential environmental impacts and emergency response capabilities
 5. Choosing a proposed route and submitting to TxDOT for public hearing and approval
 6. Adopting an ordinance to enforce the route and putting signage in place

