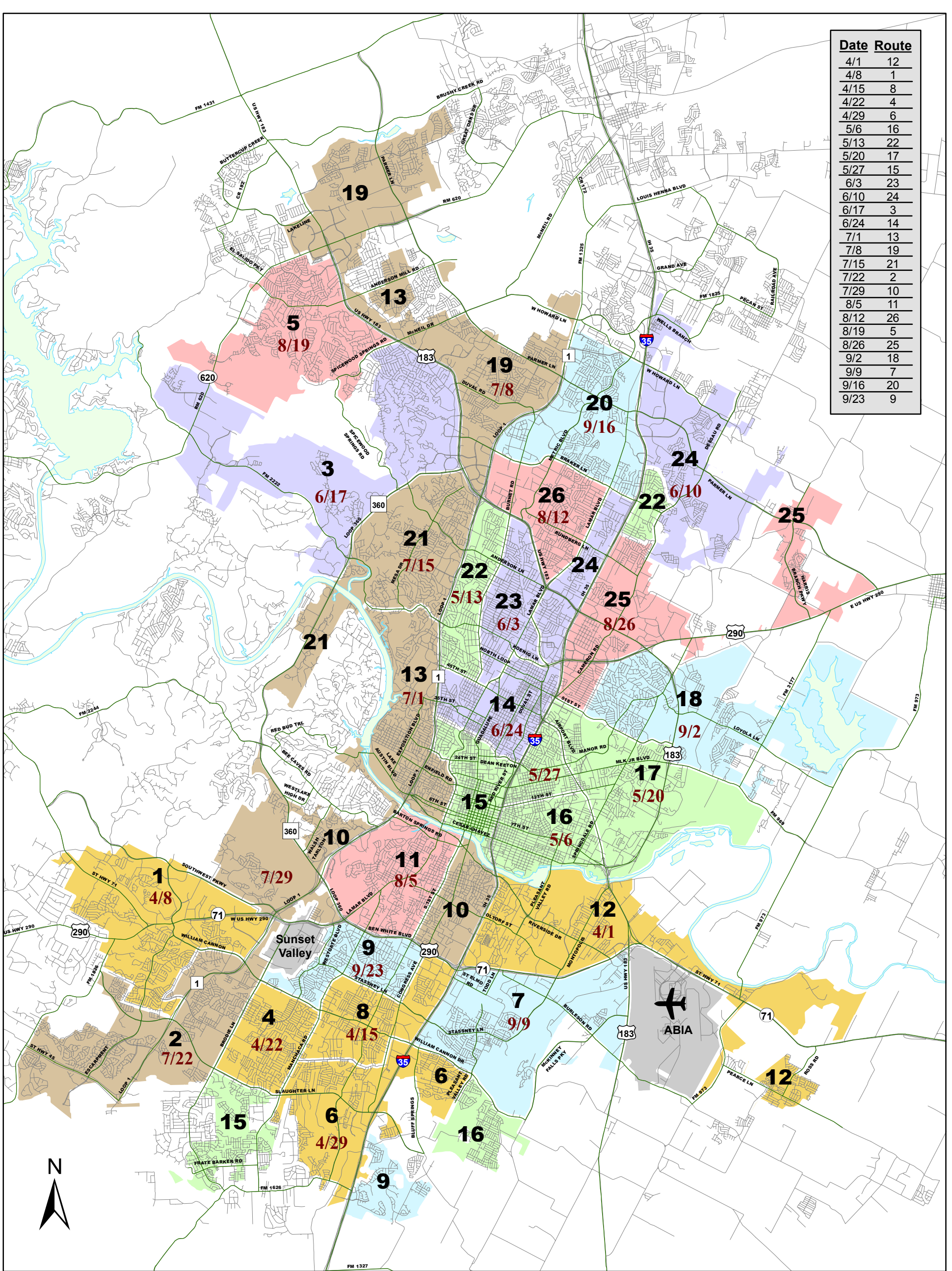


Date	Route
4/1	12
4/8	1
4/15	8
4/22	4
4/29	6
5/6	16
5/13	22
5/20	17
5/27	15
6/3	23
6/10	24
6/17	3
6/24	14
7/1	13
7/8	19
7/15	21
7/22	2
7/29	10
8/5	11
8/12	26
8/19	5
8/26	25
9/2	18
9/9	7
9/16	20
9/23	9



Route Svc Month
April
May
June
July
August
September
Unserviced Areas



This product is for informational purposes and may not have been prepared for or be suitable for legal, engineering, or surveying purposes. It does not represent an on-the-ground survey and represents only the approximate relative location of property boundaries. This product has been produced by Austin Resource Recovery for the sole purpose of geographic reference. No warranty is made by the City of Austin regarding specific accuracy or completeness.

# Brush Routes

(Effective April 1, 2013 - September 27, 2013)

G:\Routing\Projects\WallMaps\ArcGIS\Brush Bulky\Brush\_April-Oct\_11x17.mxd  
Size: 11x17 02/06/2013