

The documents outlined below are what the inspector or crew leader submits to Infrastructure Records after final inspection. These documents contain the inspector's notations reflecting as-built conditions and is used to complete the mapping and project close out process.

GENERAL REQUIREMENTS

Taps

- Final cost and quantities
- Inspection summary
- See Taps review and acceptance workflow, **page 2**

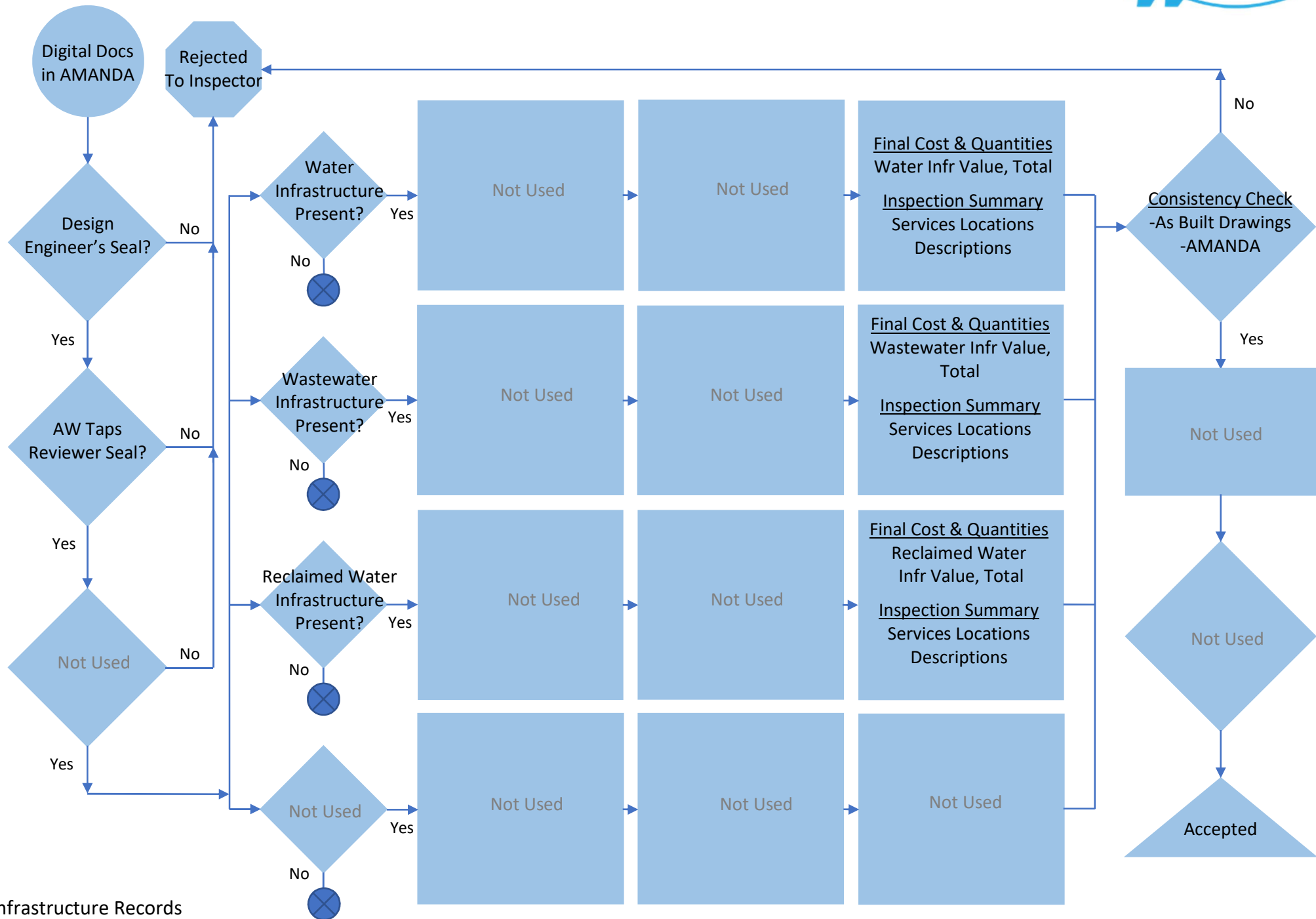
Site and Subdivision

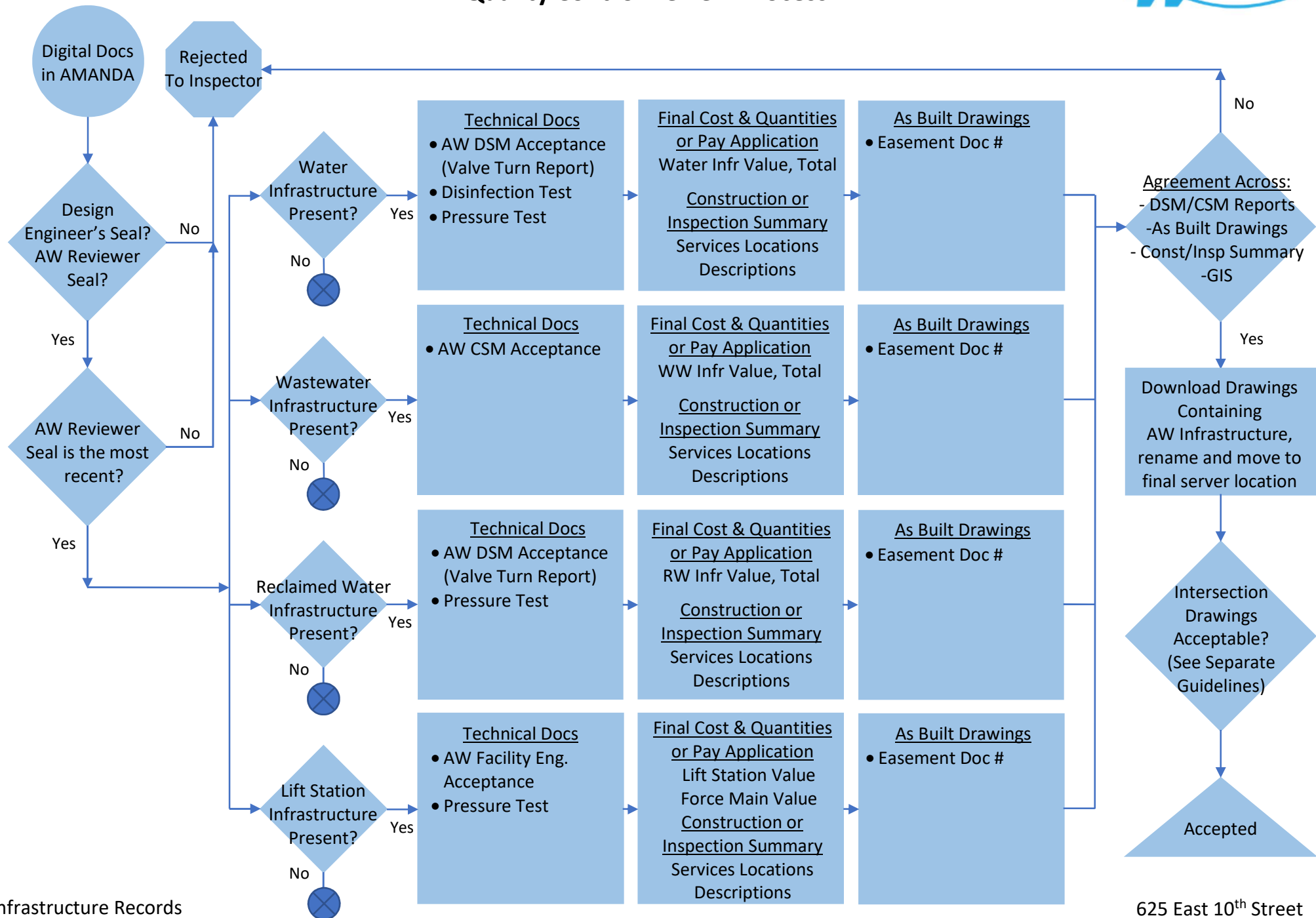
- Technical documents
- Final cost and quantities
- Construction or inspection summary
- As-built plans and drawing – drawings must comply with standards and requirements, **pages 5 – 8**
- See Site and Subdivision review and acceptance workflow, **page 3**

CIP

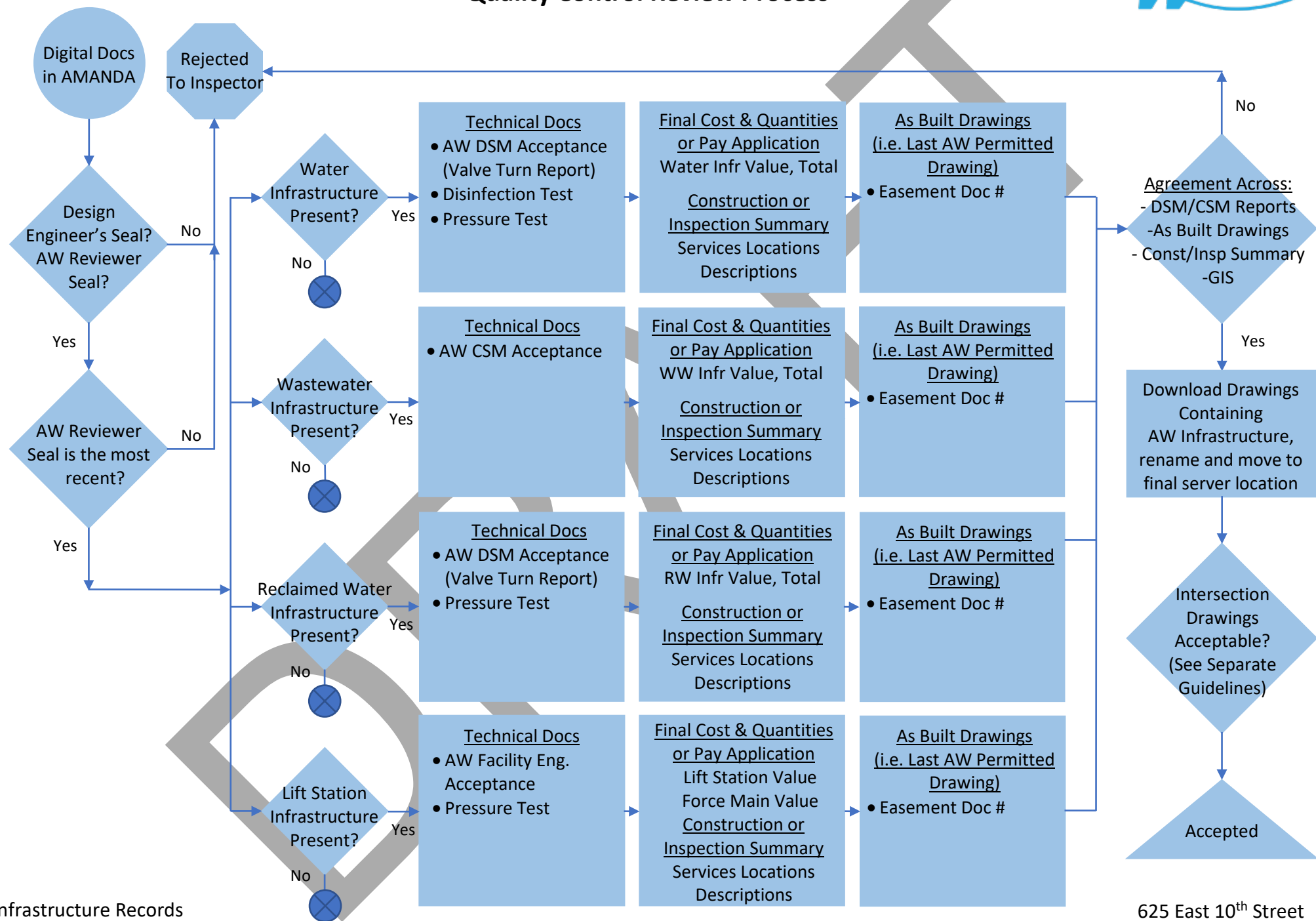
- Technical documents
- Final cost and quantities, or pay application
- Construction or inspection summary
- As-built plans and drawing – drawings must comply with standards and requirements, **pages 5 – 8**
- See CIP review and acceptance workflow, **page 4**

Taps Project Records Quality Control Review Process





Capital Improvement Projects Quality Control Review Process



Austin Water Intersection Drawings serve to provide field staff with quick reference information for locating, operating, and maintaining potable and reclaimed water network infrastructure. This document provides guidance to the engineering and development community in the preparation of electronic Intersection Drawings per the COA Utilities Criteria Manual Section 2.6.3.

Intersection Drawings shall include the following:

- a. AW project identification number (MaRS ID) and COA Inspector's name.
- b. Pipe diameter & material labels.
- c. Valve & Fire Hydrant AW geodatabase identification numbers (WWW_ID).
- d. Street Names
- e. Right of Way, Easement, and Property boundaries location and widths.
- f. Distance from Pipe centerlines to Right of way, Easement, and Property boundaries.
- g. Diameter and deflection of all fittings (Tees, bends, etc.)
- h. Distance along the pipeline between centroids of all fittings for new and existing infrastructure.
- i. AW standard title block, North Arrow and scale
- j. Intersection Drawings Revised from COA original files shall include the following note:
"THIS MAP HAS BEEN PRODUCED BY THE CITY OF AUSTIN FOR INTERNAL USE. NO WARRANTY IS MADE BY THE C.O.A. AS TO IT'S ACCURACY OR COMPLETENESS."
- k. Drawing scale shall be either 1 inch = 20 feet, 1 inch = 30 feet (preferred), or 1 inch = 40 feet.
- l. Electronic CAD files (.dwg format) shall be submitted to the COA Inspector after final acceptance.

All information included on the intersection drawings including but not limited to infrastructure shall be depicted accurately and be consistent with the as-built record drawings certified by an Engineer licensed in the State of Texas.

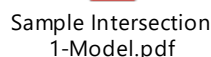
Any questions or concerns should be directed to AW Infrastructure Records at 512-972-0270 or email to AWRECORDS@austintexas.gov.

Additional Notes:

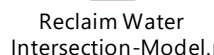
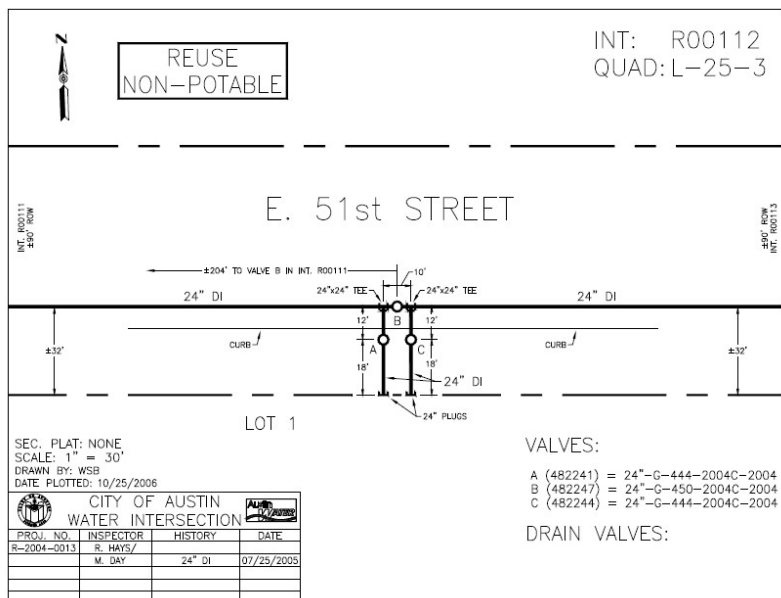
All new intersections can be assigned a temporary number by the drafter, which will be subsequently reassigned by Austin Water after receipt of the complete drawings set. Digital copies of existing intersection drawings may be available upon request.

See the attached appendix for templates and examples of acceptable intersection drawings.

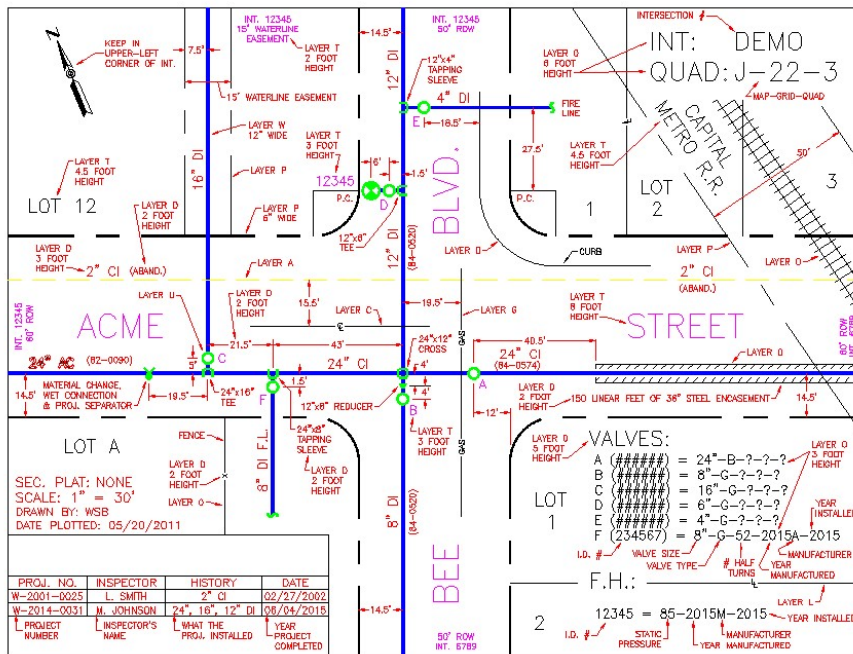
[CLICK HERE FOR LINK TO CURRENT CAD TEMPLATES & SYMBOL BLOCKS FOLDER ON THE COA WEBSITE](#)



ALL RECLAIMED INTERSECTIONS ARE DRAWN USING REGULAR BLOCKS AND TEMPLATES. THE MOST IMPORTANT DIFFERENCE IS THE "REUSE NON-POTABLE" NOTE SEEN ON THIS DRAWING AND THE "R" DESIGNATION IN THE DRAWING NAME.



SYMBOLS & LINETYPES.DWG



Symbols &
Linetypes-Model.pdf

LAYER TABLE.DWG

LAYER TABLE

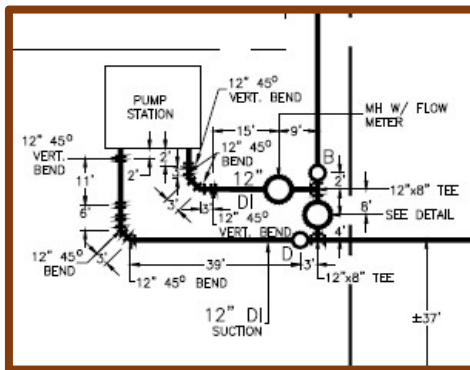
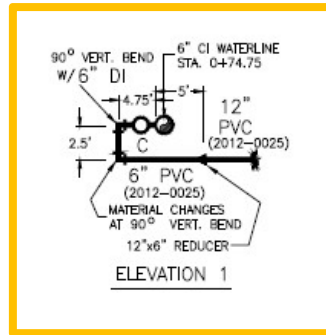
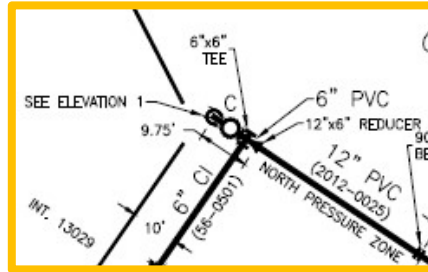
ITEM NAME	DISPLAY	SCALE	FONT	LAYER	WIDTH	HEIGHT	COLOR	STYLE
ABANDONED WATER MAINS				A			YELLOW	LINE
ADJACENT INT. #/ROW WIDTHS		INT. 245+ 50' ROW		T	.9	2'	MAGENTA	TEXT
DIMENSIONS ANNO./LINES		12'-0"		D			RED	TEXT
EASEMENT LINES				E			WHITE	LINE
ENCASEMENT BORDER				O	0'		WHITE	PLINE
ENCASEMENT HATCH LINES		360		D			RED	HATCH
GENERAL NOTES		90' TO 6"		D		2'	RED	MTEXT
INTERSECTION #, GRID, QUAD		F-11		O	1.0	6'	WHITE	TEXT
LOT NUMBERS		LOT 1		T	.9	4' 6"	MAGENTA	TEXT
MAIN SIZE & MATERIAL		12" CI		D	0	3'	RED	TEXT
PROJECT LEGEND ANNO.		W-87-0520		D	.9	2' 4"	RED	TEXT
R.O.W. LINE				P	6"		WHITE	PLINE
STREET NAMES		DR.		T		8'	MAGENTA	TEXT
VALVE INFORMATION		F.H.:		O	1'	5'	WHITE	TEXT
VALVE LEGEND		6"-G-42-		O	.9	3'	WHITE	TEXT
VALVE LETTER/F.H. #		B		T	.9	3'	MAGENTA	TEXT
WATER MAIN				W		1'	BLUE	PLINE
NORTH ARROW (SCALED DOWN)				O	1		WHITE	BLOCK
APPURTENANCES/FITTINGS				U	1		GREEN	BLOCK
METER VAULT BOX				O	0'		WHITE	PLINE



LAYER
TABLE-Model.pdf

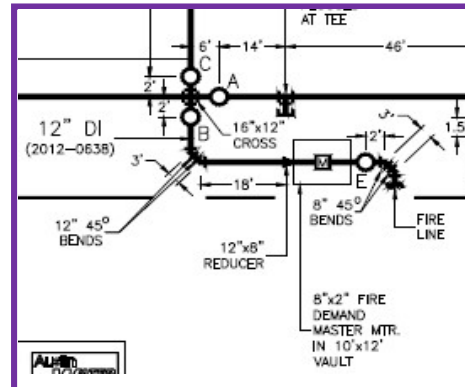
SPECIAL EXHIBIT.DWG

**EXHIBIT A
ELEVATION
SAMPLE**



**EXHIBIT B
PUMP STATION
SAMPLE**

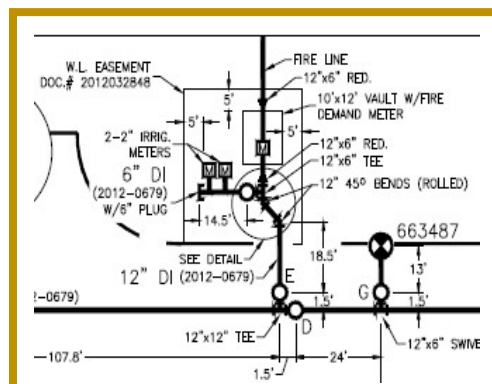
**EXHIBIT C
METER VAULT
SAMPLE**



Materials abbreviations:



APPENDIX
ONE-Materials Abbr



**EXHIBIT D
EASEMENT
SAMPLE**