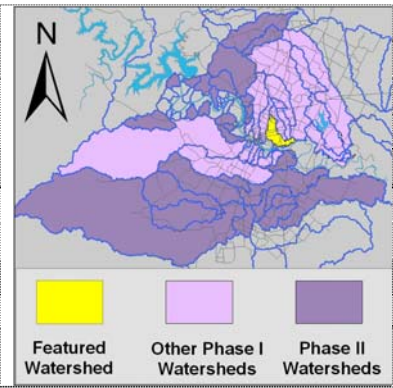


Boggy Creek (North) Watershed

Summary Sheet

Catchment	Total area	6 square miles				
	Area in recharge	none				
	Creek length	8 miles				
Demographics	Receiving water	Colorado River				
	2000 population	23,372				
	2030 projected population	35,728				
	30 year projected % increase	53 %				
Land Use	Impervious cover (2003 estimate)	42.36 %				
Overall EII Scores	2000	2003	2006	2009	2011	
	56	58	57	61	56	



Flow Regime* for Sample Sites on Boggy Creek Upstream to Downstream

Site #	Site Name	2003						2006					2009				2010	2011					
		Feb WQ	Mar WQ	Mar Bio	May WQ	Sep WQ	Dec WQ	Feb WQ	May WQ	Jul Bio	Aug WQ	Nov WQ	Feb WQ	May WQ	May-Jun Bio	Oct WQ	Dec WQ	Dec WQ	Mar WQ	Jun WQ	Jun Bio	Sep WQ	
2754	Manor Rd	B	B	B	B	B	B	B	B	B	n	B	B	B		B	B	B	B	B	B	B	B
837	Nile Rd	B	B	B	B	B	B	B	B	B	n	B	B	B		B	B	B	B	B	B	B	B
493	Delwau	B	B	B	B	B	n	n	n	B	n	n	B	B		B	B	n	B	n	n	n	n

* B = baseflow n = no flow S = storm flow blue = Samples were taken grey = Samples were not taken blank = not visited

Summary of 2011 Data for Boggy Creek (North)

Summary	Parameter	Mean	Max	Min	Discussion
Physicochemical	D.O. mg/l	7.8	14.9	3.3	Wide range: high values downstream, low values at upstream site 2754.
	pH st.units	7.83	8.64	7.29	Wide range: high values downstream, low values at site 2754.
	Cond uS/cm	659	805	532	Within normal range.
Nutrients	NH ₃ mg/l	0.019	0.031	0.008	Within normal range.
	NO ₃ mg/l	0.032	0.089	0.008	Within normal range.
	Ortho P mg/l	0.136	0.180	0.080	Generally above average, but within normal range.
Sediment Load	TSS mg/l	1.9	6.3	0.3	Within normal range.
	Turbidity ntu	3.951	10.66	0.81	Wide range, but within normal range.
Biology	E.Coli /100ml	1554	2420	155	Generally above average concentrations, increasing downstream.
	Benthic Macroinvertebrates and Diatoms: evaluations are provided in the introduction of this report				

Index scores* for Boggy Creek (North) Sites by Year

Reach	Site	Site Name	Year	Water Quality	Sediment**	Contact Rec.	Non-Contact Rec.	Physical Integrity	Aquatic Life	Benthic subindex	Diatom subindex	Total EII Score
BOG1	493	North Boggy Creek @ Delwau Lane	2000	67	88	82	79	23	30	29	31	62
BOG2	837	North Boggy Creek @ Nile Street	2000	62	88	78	62	20	23	33	13	56
BOG3	784	North Boggy Creek @ Crestwood	2000	39	88	64	73	41	19	29	9	54
BOG3	853	Unnamed Trib of N Boggy Creek @ Banton Rd	2000		88		48	24	23	33	13	46
BOG1	493	North Boggy Creek @ Delwau Lane	2003	67	88	82	58	47	37	42	31	63
BOG2	837	North Boggy Creek @ Nile Street	2003	52	88	62	75	47	26	30	22	58
BOG3	2754	North Boggy Creek @ Manor Rd	2003	51	88	45	56	54	26	23	28	53
BOG1	493	North Boggy Creek @ Delwau Lane	2006		85		71	36	50	37	62	61
BOG2	837	North Boggy Creek @ Nile Street	2006	57	85	65	66	51	52	43	61	63
BOG3	2754	North Boggy Creek @ Manor Rd	2006	52	85	25	63	48	38	25	51	52
BOG1	493	North Boggy Creek @ Delwau Lane	2009	71	87	41	79	39	75	53	96	65
BOG2	837	North Boggy Creek @ Nile Street	2009	61	87	30	47	49	65	46	84	57
BOG3	2754	North Boggy Creek @ Manor Rd	2009	64	87	25	67	57	65	49	80	61
BOG1	493	North Boggy Creek @ Delwau Lane	2011	62	81	65	60	43				52
BOG2	837	North Boggy Creek @ Nile Street	2011	66	81	34	58	50	62	68	55	59
BOG3	2754	North Boggy Creek @ Manor Rd	2011	60	81	32	65	56	46	27	65	57

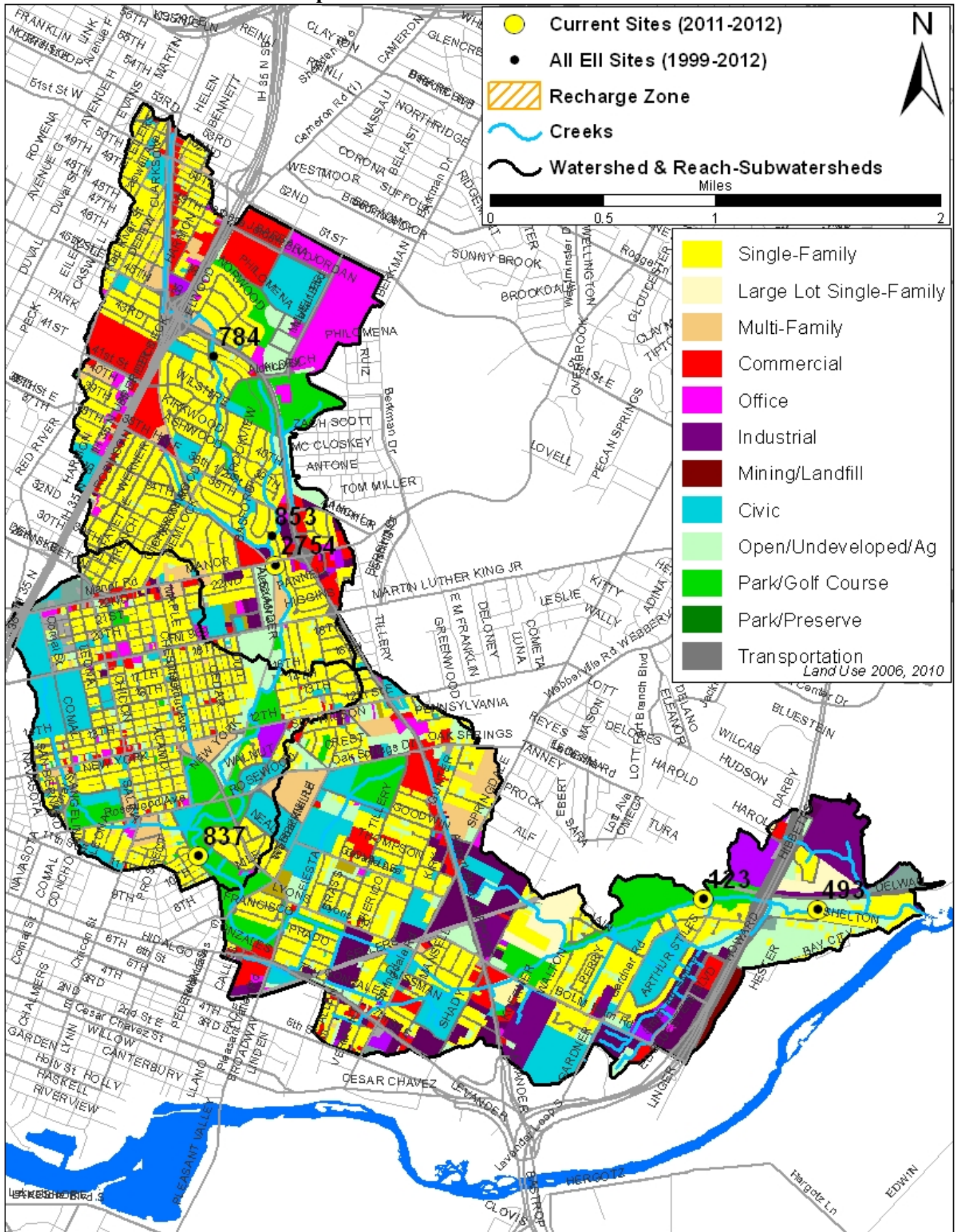
* blank cells indicate parameter was not collected, blank row indicate site was dropped

**sediment samples only collected at the downstream site

100-87.5 Excellent 87.5-75 V. Good 75-62.5 Good 62.5-50 Fair 50-37.5 Marginal 37.5-25 Poor 25-12.5 Bad 12.5-0 V. Bad

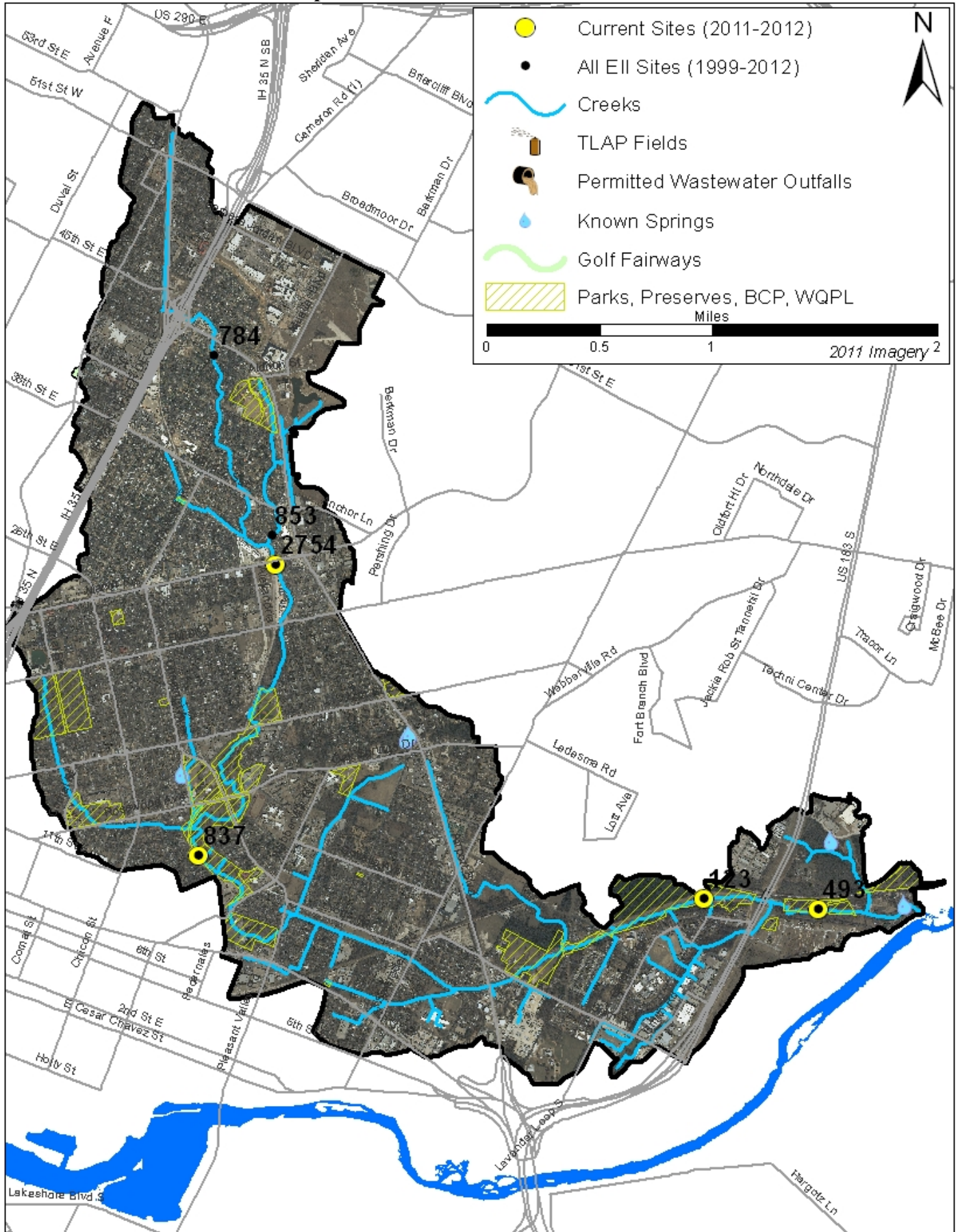
Boggy Creek (North) Watershed

Land Use Map



Boggy Creek (North) Watershed

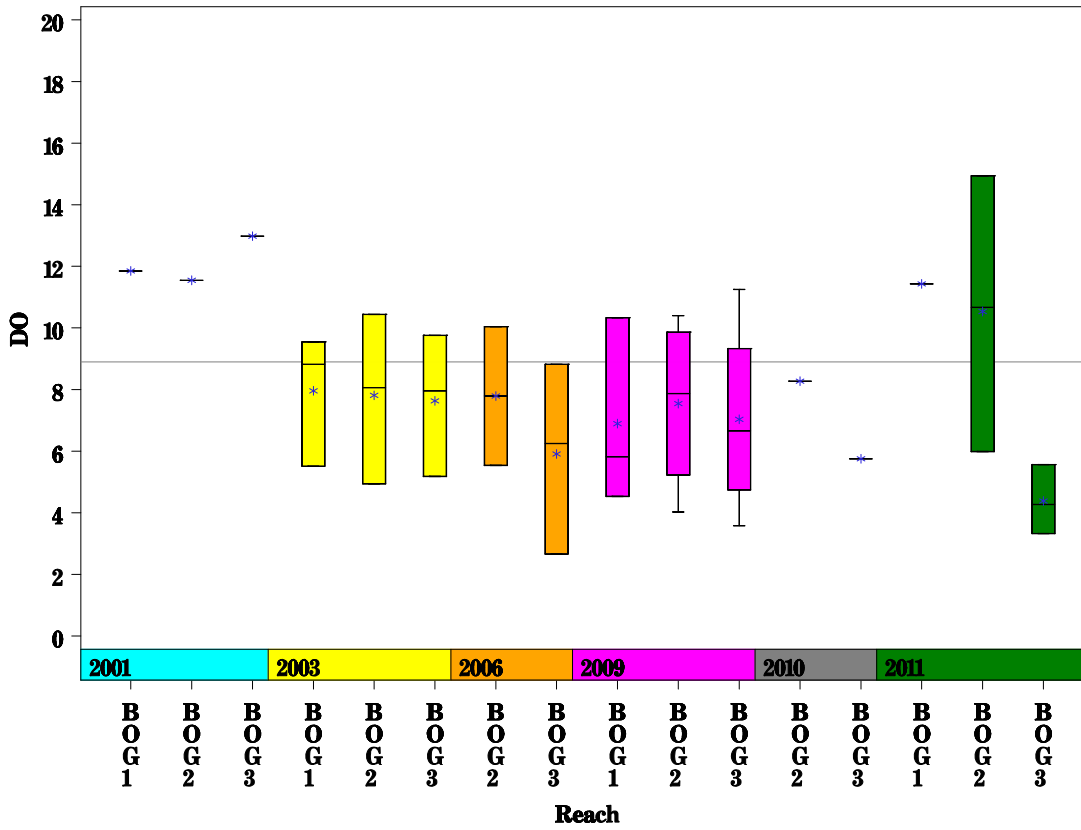
Aerial Map



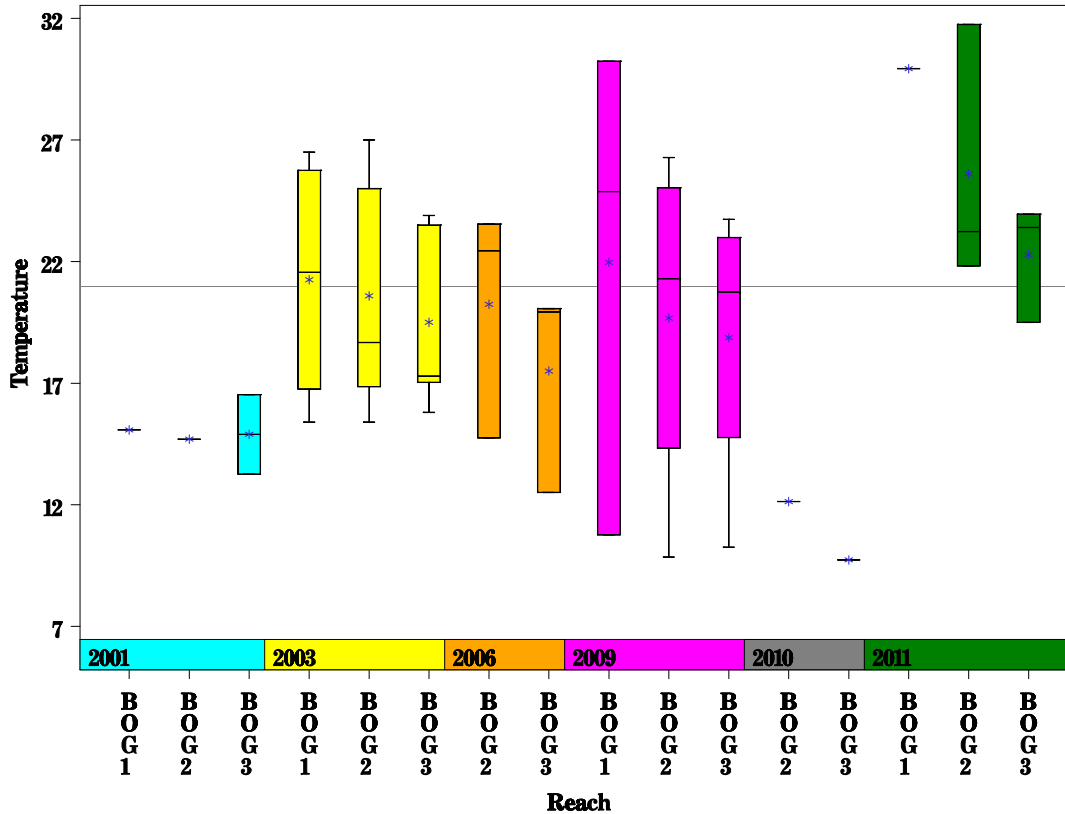
Boggy Creek (North) Watershed

Data Summary Graphs – Dissolved Oxygen and Temperature (Downstream to Upstream by Year)

Parameter = DISSOLVED OXYGEN Unit = MG/L Watershed = Boggy Creek



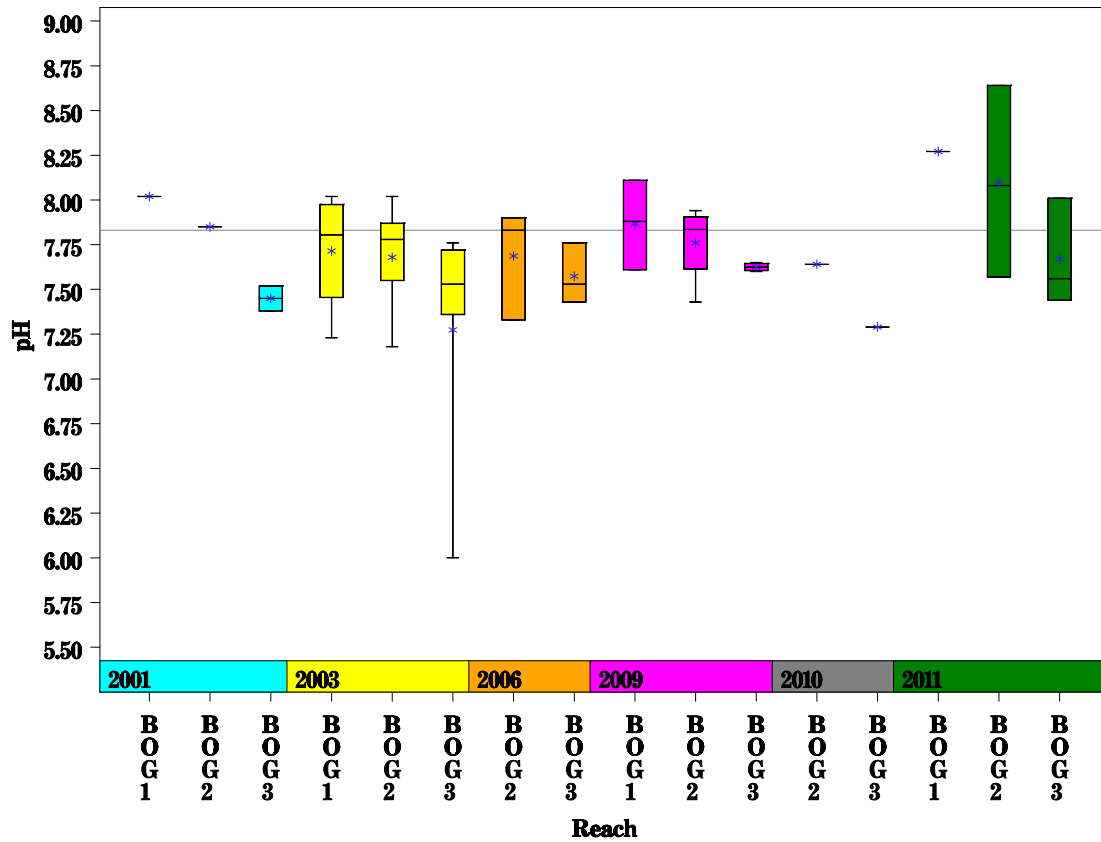
Parameter = WATER TEMPERATURE Unit = Deg. Celsius Watershed = Boggy Creek



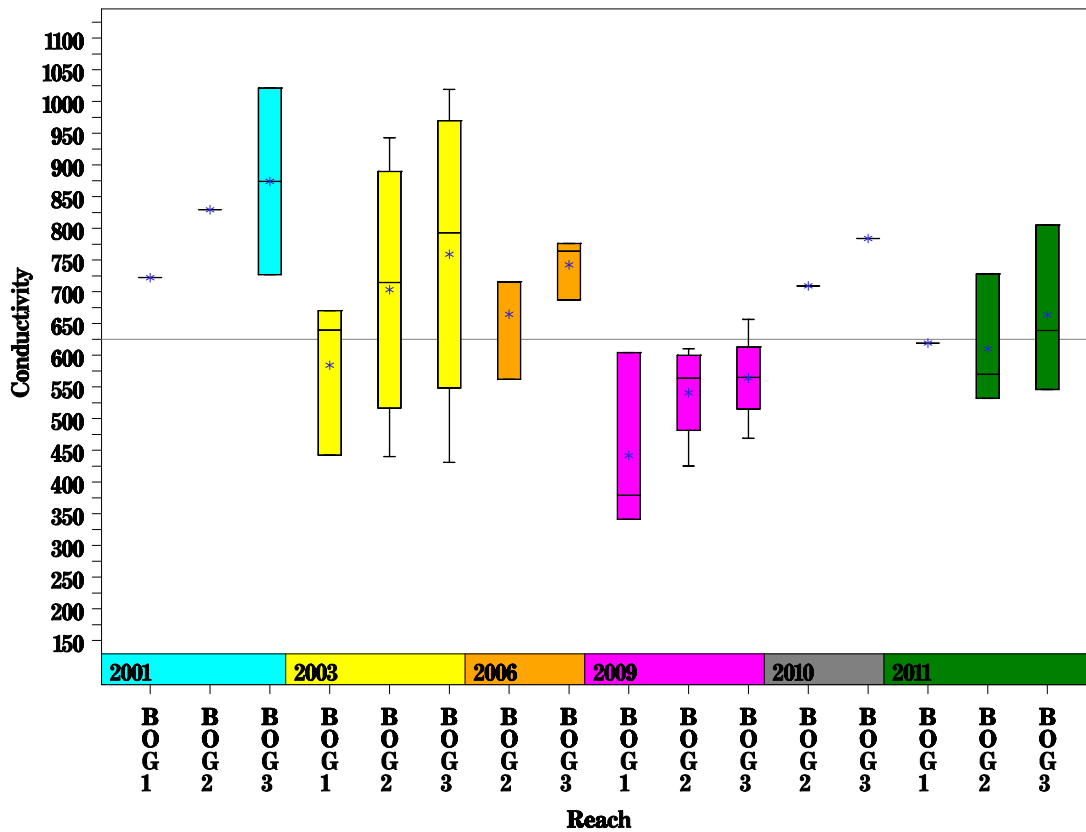
Boggy Creek (North) Watershed

Data Summary Graphs – pH and Conductivity (Downstream to Upstream by Year)

Parameter=PH Unit=Standard units Watershed=Boggy Creek



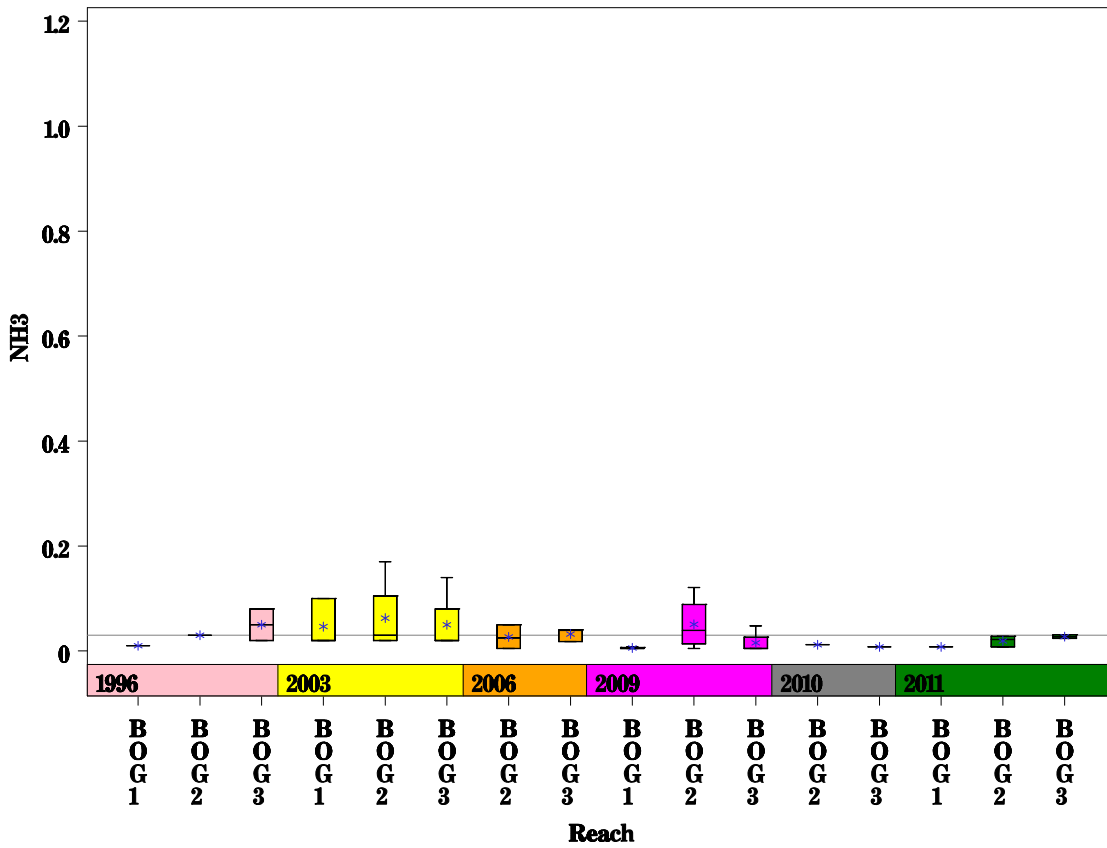
Parameter=CONDUCTIVITY Unit=uS/cm Watershed=Boggy Creek



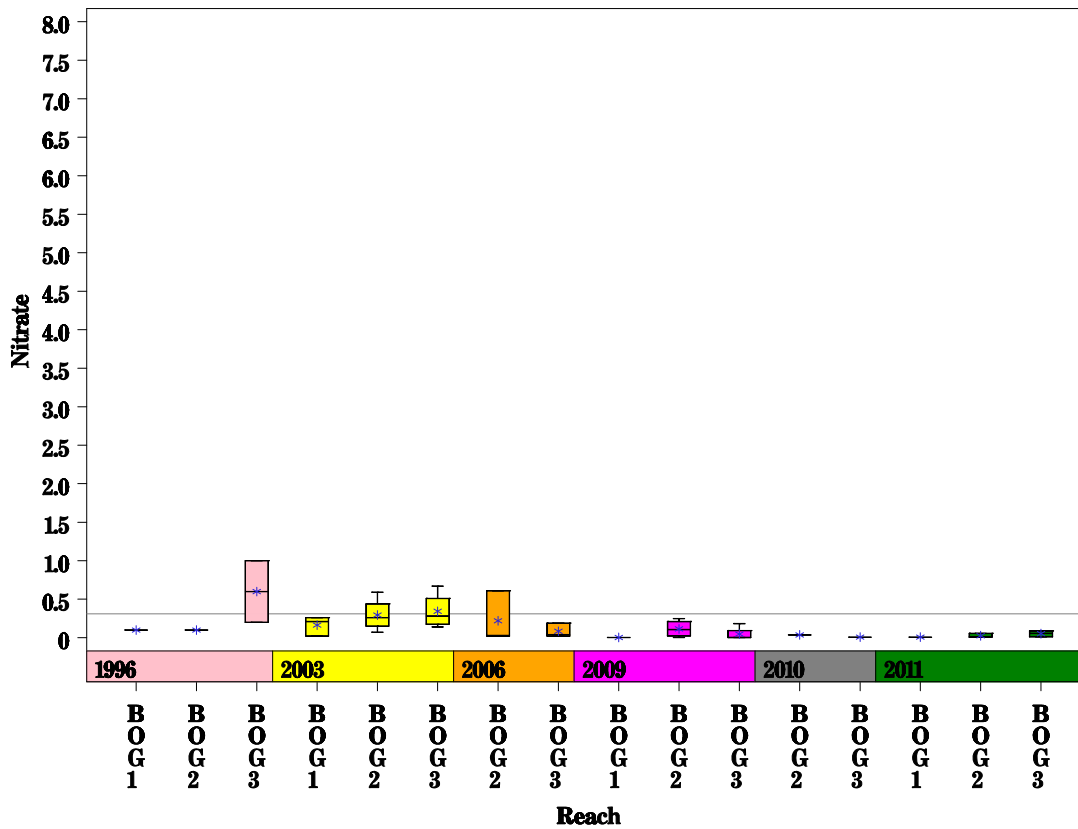
Boggy Creek (North) Watershed

Data Summary Graphs – Ammonia and Nitrate/Nitrite (Downstream to Upstream by Year)

Parameter = AMMONIA AS N Unit = MG/L Watershed = Boggy Creek



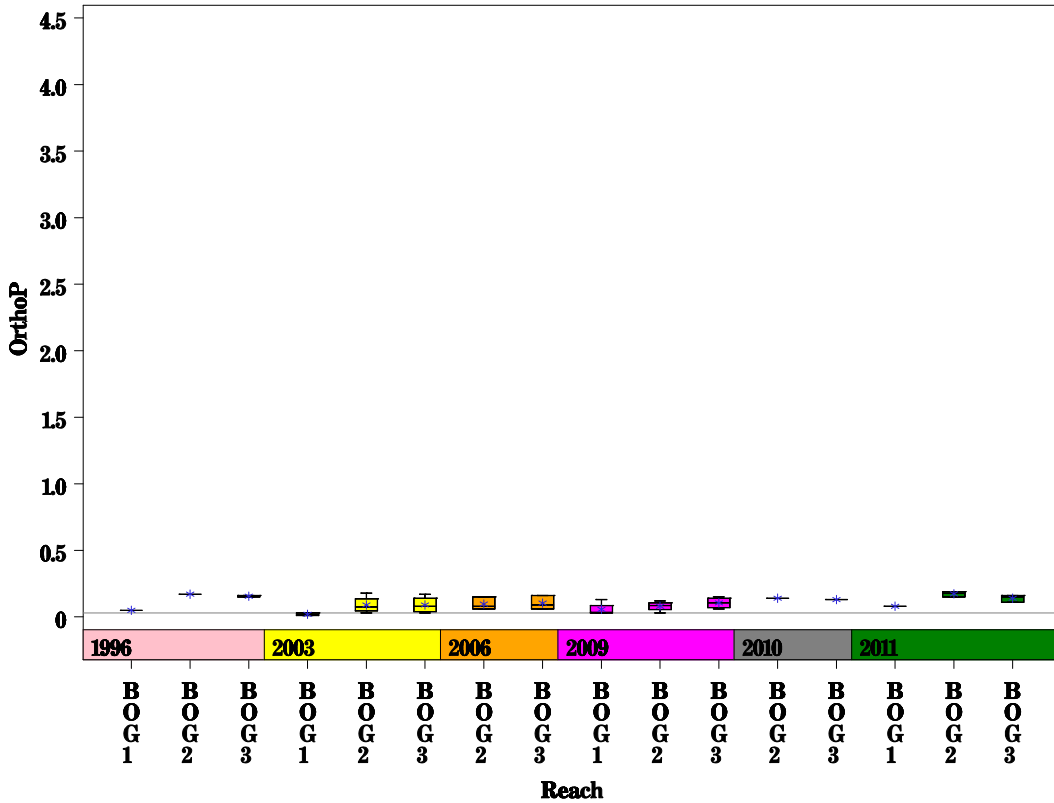
Parameter = NITRATE AS N Unit = MG/L Watershed = Boggy Creek



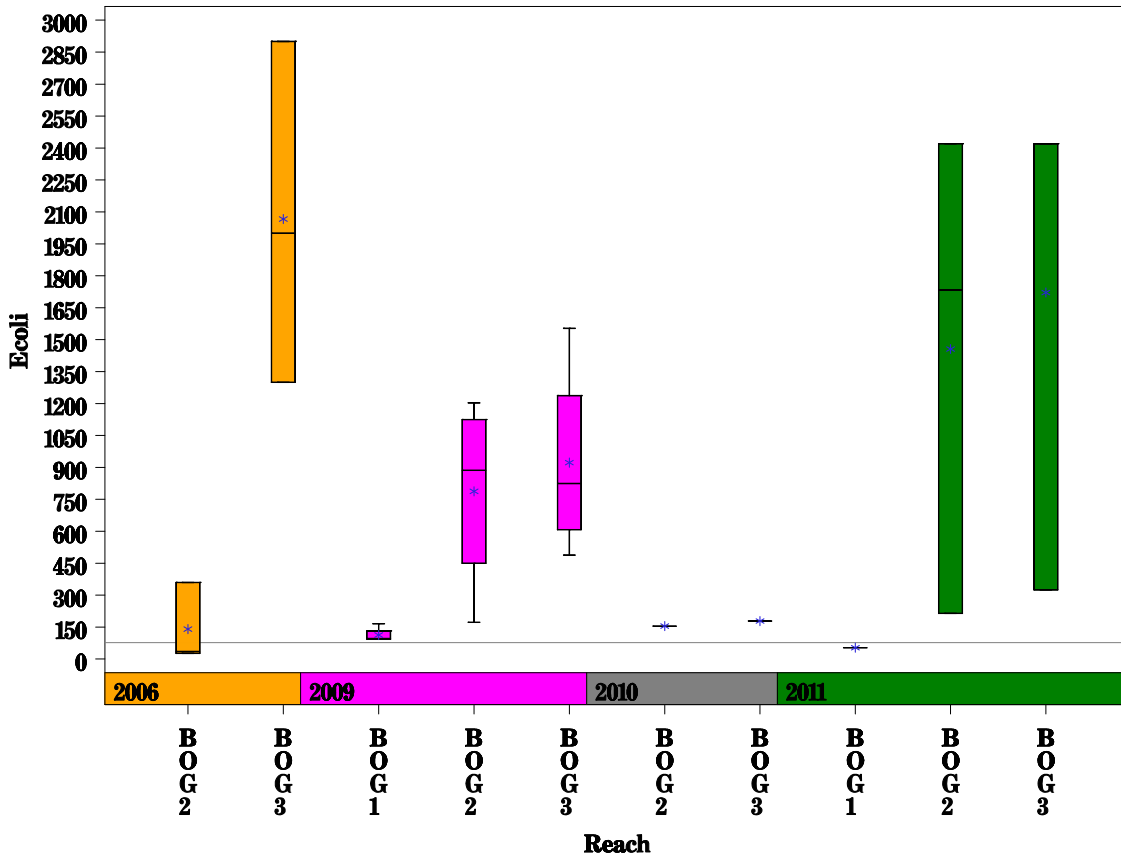
Boggy Creek (North) Watershed

Data Summary Graphs – Orthophosphate and E.coli (Downstream to Upstream by Year)

Parameter = ORTHOPHOSPHORUS AS P Unit = MG/L Watershed = Boggy Creek



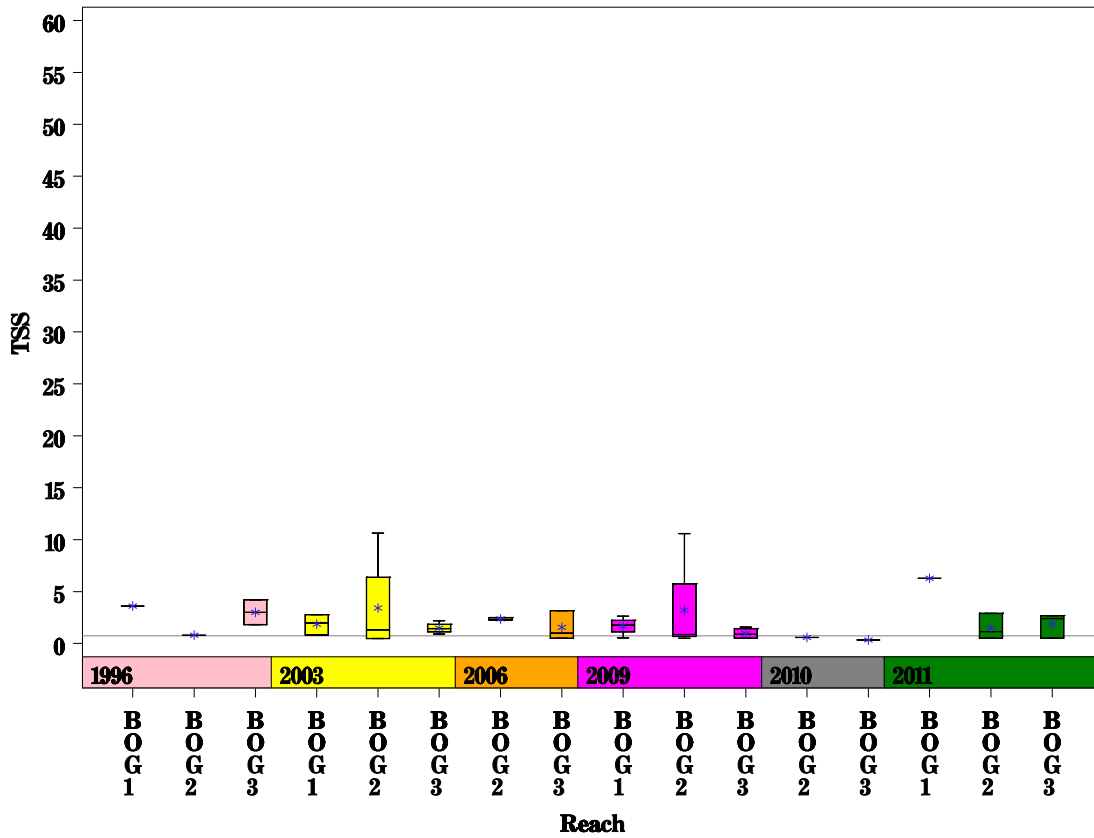
Parameter = E COLI BACTERIA Unit = MPN/100ML Watershed = Boggy Creek



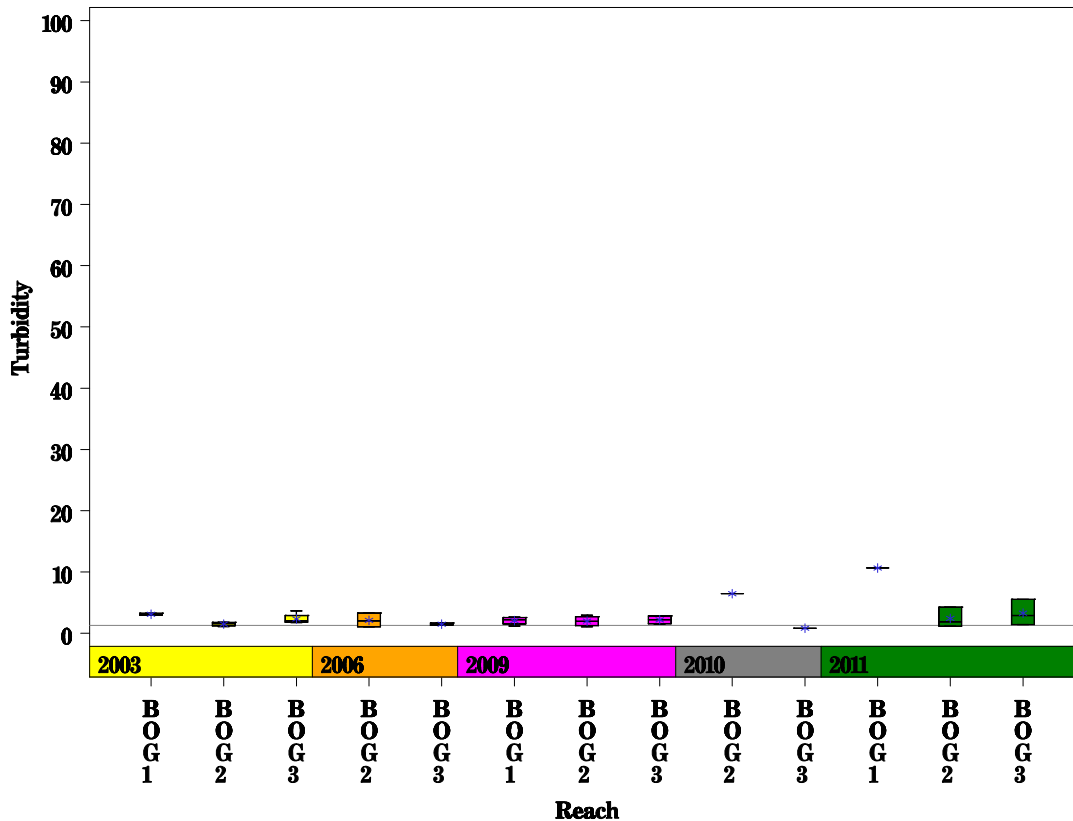
Boggy Creek (North) Watershed

Data Summary Graphs – Total Suspended Solids and Turbidity (Downstream to Upstream by Year)

Parameter = TOTAL SUSPENDED SOLIDS Unit = MG/L Watershed = Boggy Creek

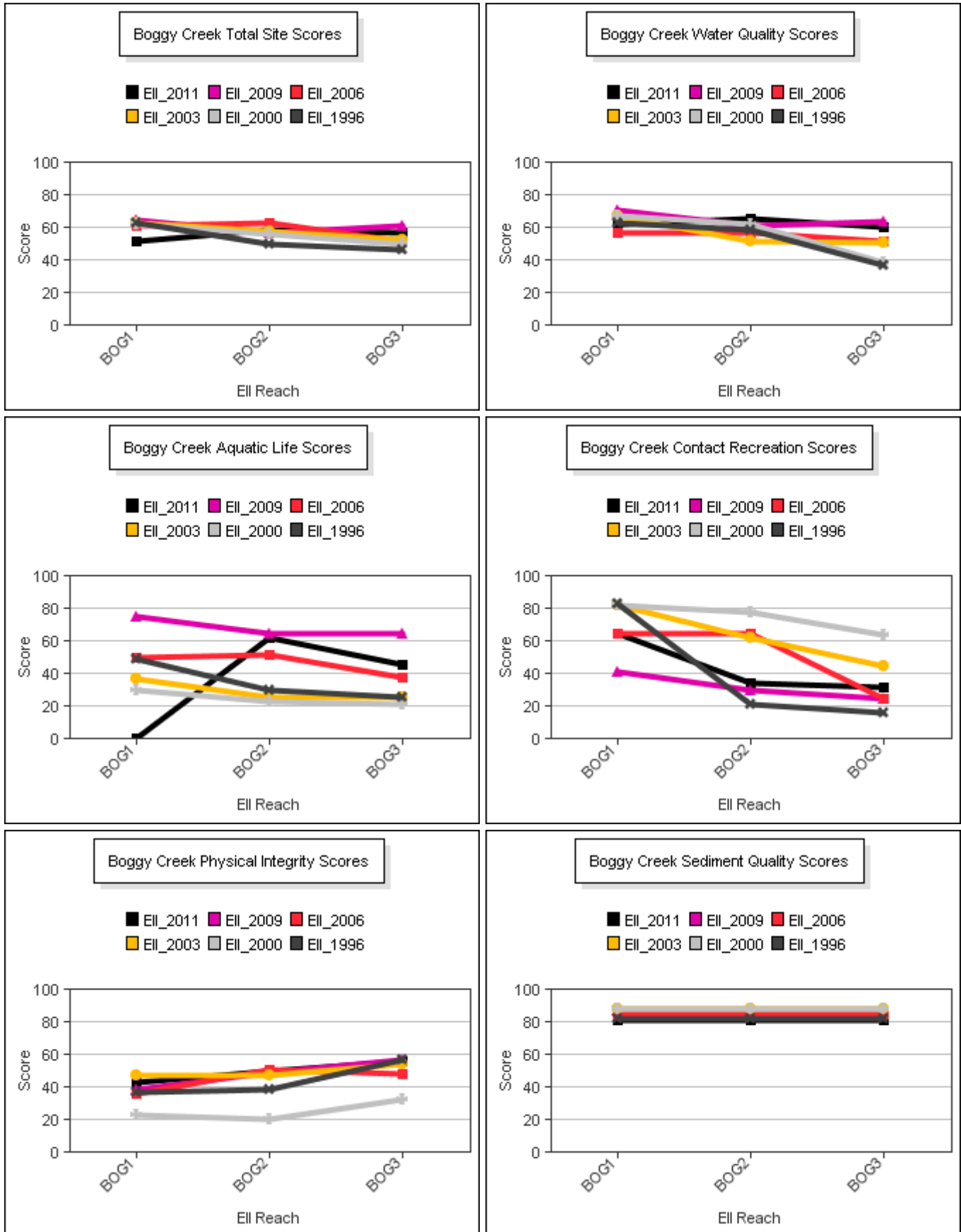


Parameter = TURBIDITY Unit = NTU Watershed = Boggy Creek



Boggy Creek (North) Watershed

Score Summary – Reach scores for each sample year



Boggy Creek (North) Watershed

Site Photographs



493_t00-ds-02_13_2001



493-t00-ds-05-29-2009



784_t00-ds-02_13_2001



784_t00-us-02_13_2001



837_t00-ds-02_13_2001



837_t00-ds-07_06_2006

Boggy Creek (North) Watershed

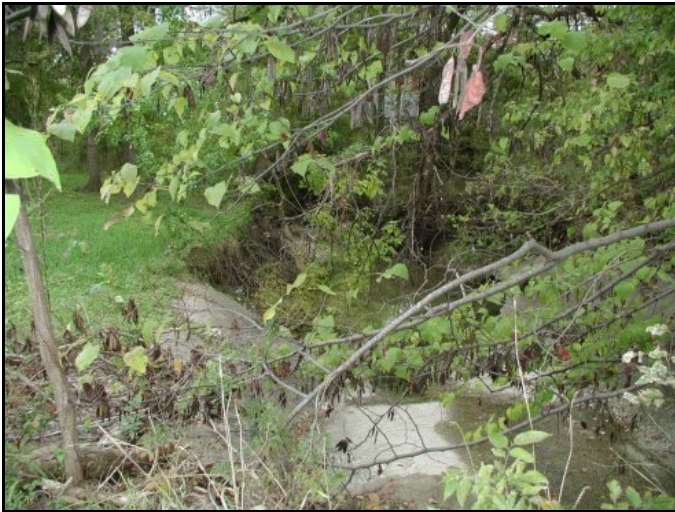
Site Photographs



837_t00-us1-07_06_2006



837-t00-ur-06-02-2009



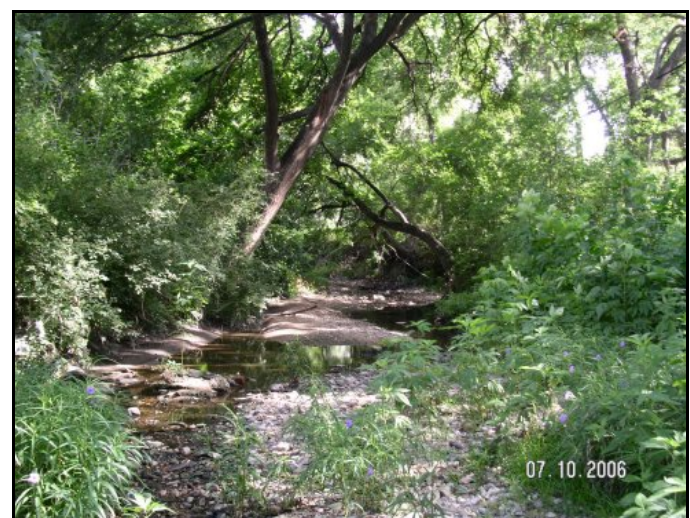
853_t00-ds-02_13_2001



853_t00-us-02_13_2001



2754_t00-us-03_14_2003



2754_t00-us1-07_10_2006

This page left intentionally blank