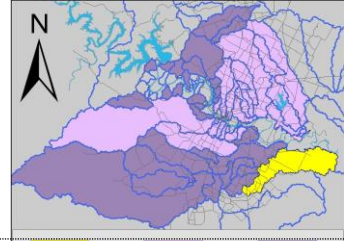


Dry Creek (East) Watershed

Summary Sheet

Catchment	Total area	41.8 sq. miles				
	Area in recharge	0				
	Creek length	24.8 miles				
Demographics	Receiving water	Colorado River				
	2000 population	unknown				
	2030 projected population	unknown				
Land Use	30 year projected % increase	unknown				
	Impervious cover (2003 estimate)	4 %				
Overall EII Scores	1999	2002	2005	2008	2010	2012
	56	55	60	55	60	61



Flow Regime* for Sample Sites on Dry Creek (East)

Site #	Site Name	2002					2005					2008					2010				2011-2012				
		Feb WQ	Feb Bio	May WQ	Aug WQ	Nov WQ	Mar WQ	Jun WQ	Jun Bio	Sep WQ	Dec WQ	Feb WQ	May WQ	Jun Bio	Sep WQ	Dec WQ	Mar WQ	May WQ	May Bio	Oct WQ	Dec WQ	Mar WQ	Apr Bio	Jul WQ	
1208	FM812	n		n	n	B																			
1209	Elroy	n		n	n	B																			
1211	Pearce	B		B		B	n	B	B	B	n	n	B	n	B	B	S	B	B	B	B	B	B	n	
1210	Wolf	B	B	n	B	B	B	B	n	B	B	n	n	n	B	n	S	n	B	B	B	B	B	n	
1212	River	B		n	B	B	B	n	n	n															

* B = baseflow n = no flow storm = storm flow blue = Samples were taken grey = Samples were not taken blank = site not visited

Summary of 2012 Data for Dry Creek (East)

Summary	Parameter	Mean	Max	Min	Discussion
Physicochemical	D.O. mg/l	7.8	11.4	4.1	Wide range: some high values downstream, some low values upstream.
	pH st.units	8.05	8.24	7.75	Generally within normal range, some high values.
	Cond uS/cm	749	1103	8	Generally above average readings with some high values.
Nutrients	NH ₃ mg/l	0.024	0.094	0.008	Mostly within normal range, with some high values at site 1211.
	NO ₃ mg/l	0.201	0.700	0.008	Within normal range, higher concentrations during December 2011.
	Ortho P mg/l	0.025	0.056	0.004	Within normal range.
Sediment Load	TSS mg/l	21.9	40.3	7.6	Generally high concentrations.
	Turbidity ntu	21.47	42.00	10.30	Generally high concentrations.
Biology	E.Coli /100ml	630	1553	47	Some high concentrations at site 1210.
	Benthic Macroinvertebrates and Diatoms: evaluations are provided in the introduction of this report				

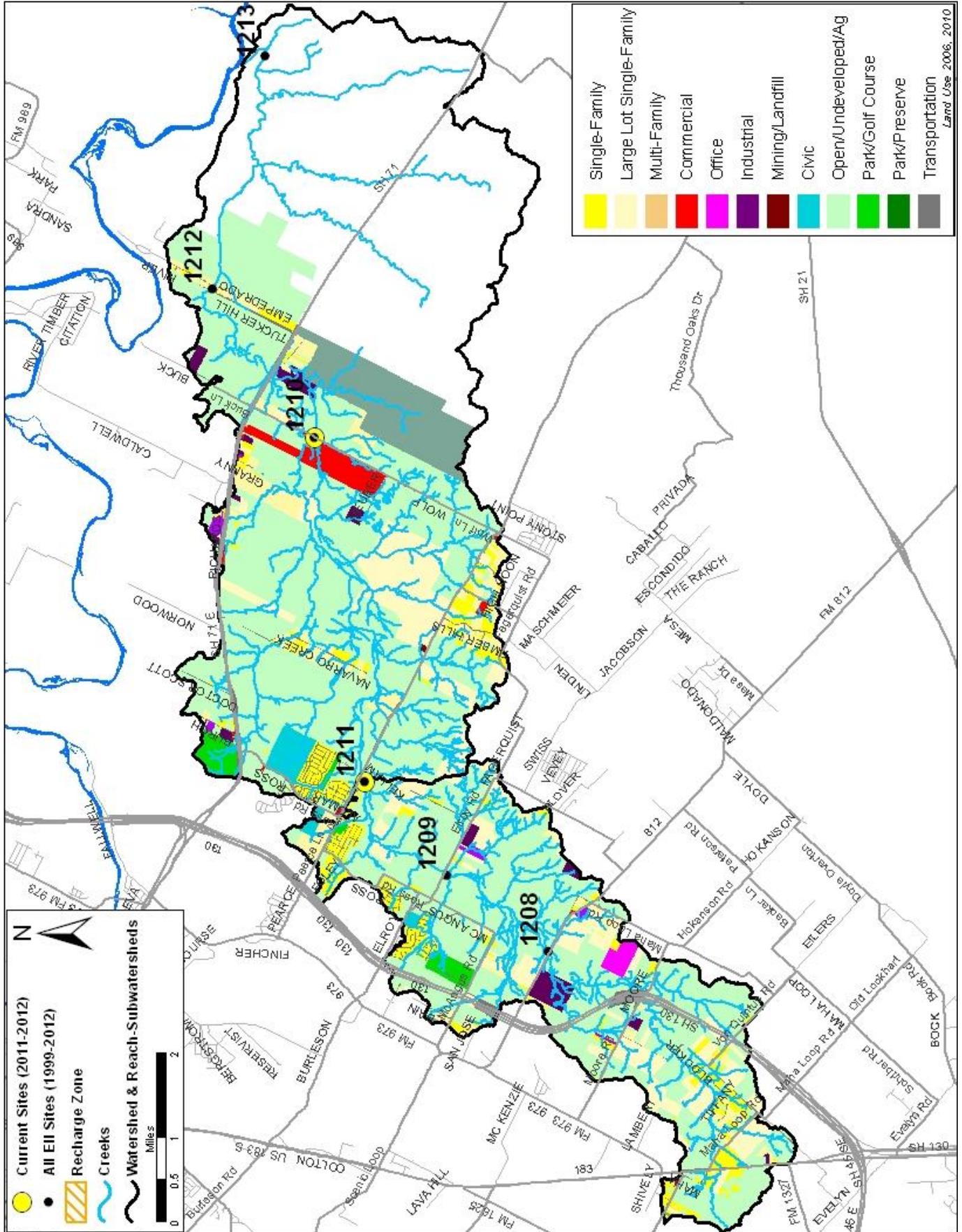
Index scores* for Dry Creek (East) Sites by Year

Reach	Site	Site Name	Year	Water Quality	Sediment**	Contact Rec.	Non-Contact Rec.	Physical Integrity	Aquatic Life	Benthic subindex	Diatom subindex	Total EII Score
DRE1	1210	Dry Creek @ Wolf Lane	1999	46	84	90	35	42				50
DRE1	1212	Dry Creek @ River Road	1999	42	84	87	39	68				53
DRE1	1213	Dry Creek @ Colorado Dr	1999	49	84	97	65	72				61
DRE2	1208	Dry Creek @ FM 812	1999	76	84	100	88	64				69
DRE2	1209	Dry Creek @ Elroy Road	1999	65	84	97	48	31				54
DRE2	1211	Dry Creek @ Pearce Road	1999	49	84	83	42	33				49
DRE1	1210	Dry Creek @ Wolf Lane	2002	47	86	76	63	32	27	34	20	55
DRE1	1212	Dry Creek @ River Road	2002	48	86	85	37	48				51
DRE2	1208	Dry Creek @ FM 812	2002	61	86	94	50	26				53
DRE2	1209	Dry Creek @ Elroy Road	2002	58	86	95	72	31				57
DRE2	1211	Dry Creek @ Pearce Road	2002	59	86	96	65	48				59
DRE1	1210	Dry Creek @ Wolf Lane	2005	42	83	64	57	39	56	64	48	57
DRE1	1212	Dry Creek @ River Road	2005	54	83	67	32	48	71		71	59
DRE2	1211	Dry Creek @ Pearce Road	2005	54	83	76	50	44	77	77		64
DRE1	1210	Dry Creek @ Wolf Lane	2008	60	80	87	22	49				50
DRE2	1211	Dry Creek @ Pearce Road	2008	48	80	61	62	49	59	59		60
DRE1	1210	Dry Creek @ Wolf Lane	2010	59	83	45	56	38	57	53	60	56
DRE2	1211	Dry Creek @ Pearce Road	2010	49	83	55	70	58	60	53	66	63
DRE1	1210	Dry Creek @ Wolf Lane	2012	48	82	28	51	59	80	77	83	58
DRE2	1211	Dry Creek @ Pearce Road	2012	58	82	56	62	69	49	55	42	63

* blank cells indicate parameter was not collected, blank row indicate site was dropped **sediment samples only collected at the downstream site
 100-87.5 Excellent 87.5-75 V. Good 75-62.5 Good 62.5-50 Fair 50-37.5 Marginal 37.5-25 Poor 25-12.5 Bad 12.5-0 V. Bad

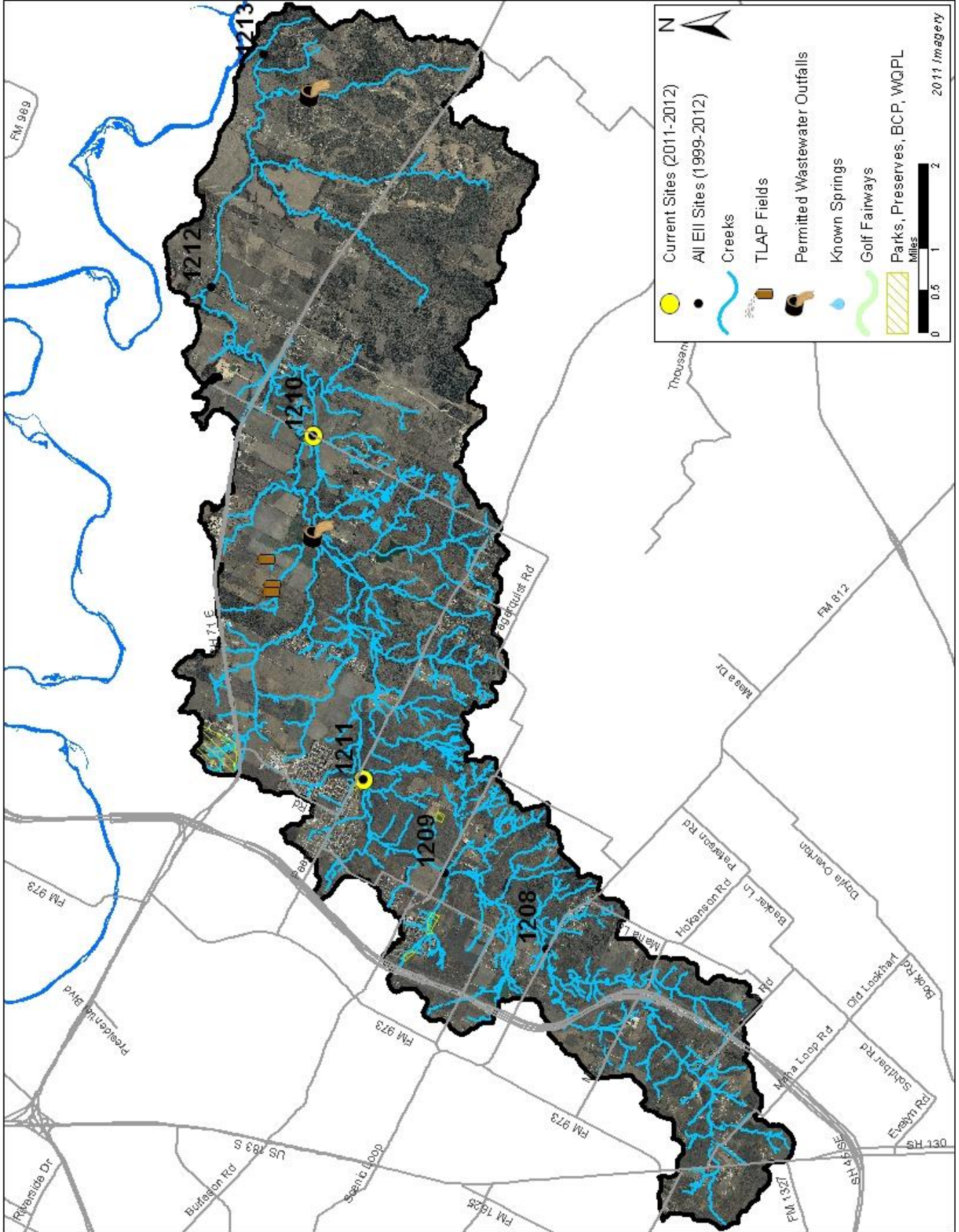
Dry Creek Watershed

Land Use Map



Dry Creek (East) Watershed

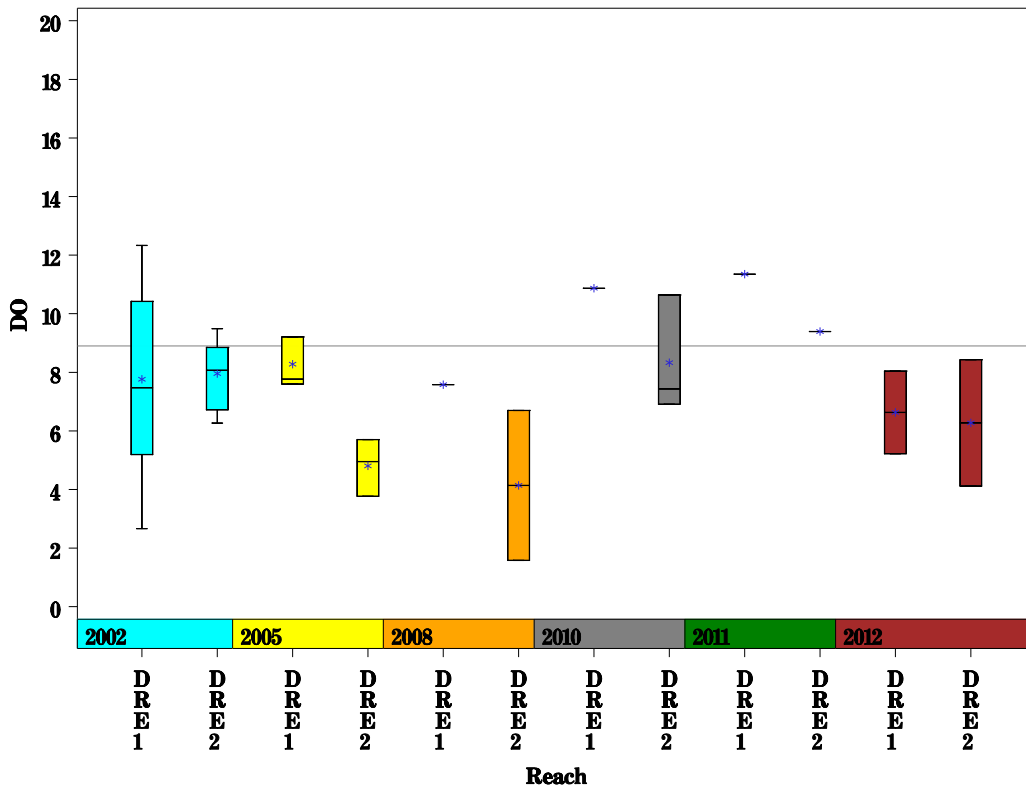
Aerial Map



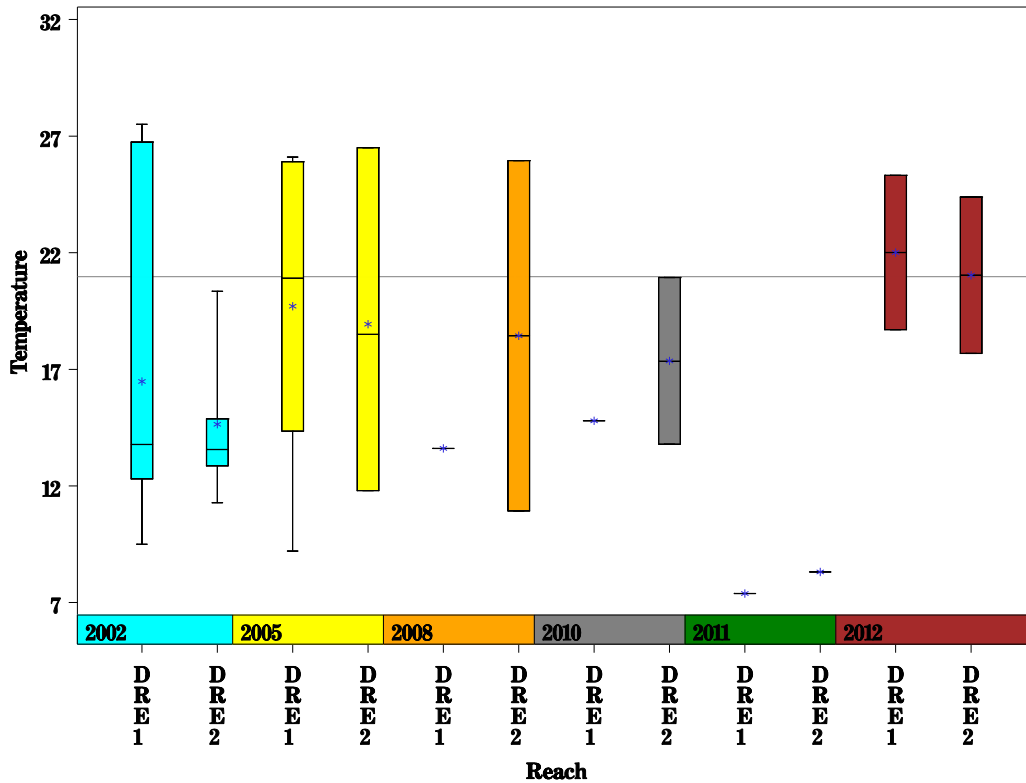
Dry Creek (East) Watershed

Data Summary Graphs – Dissolved Oxygen and Temperature (Downstream to Upstream by Year)

Parameter=DISSOLVED OXYGEN Unit=MG/L Watershed=Dry Creek East



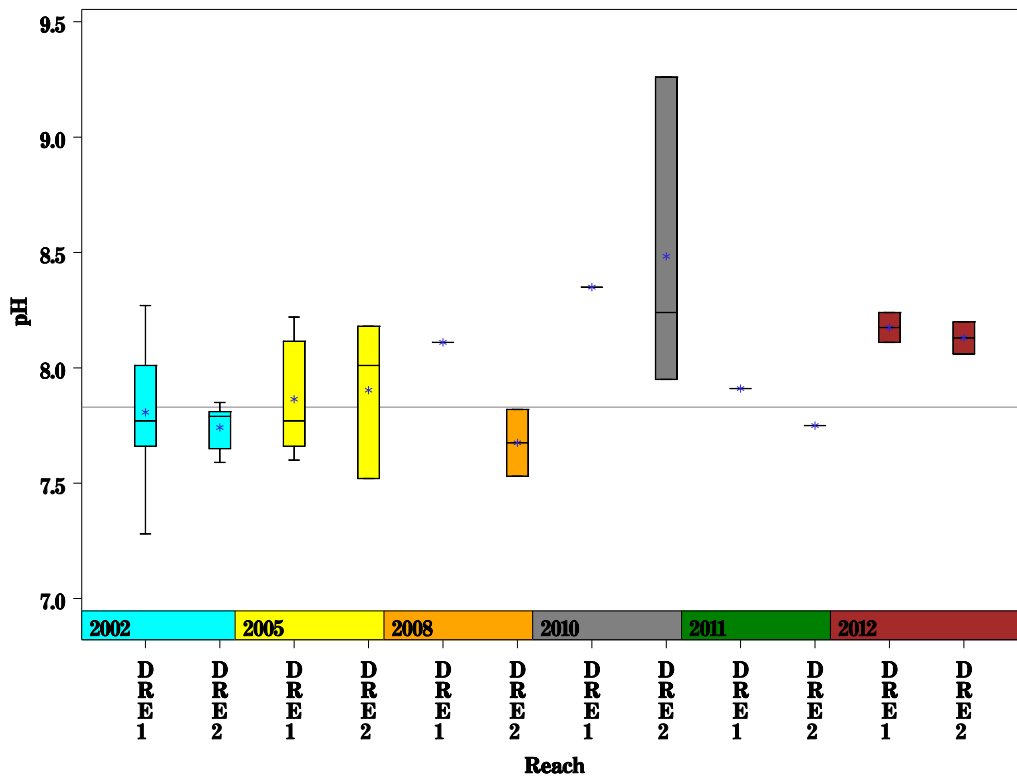
Parameter=WATER TEMPERATURE Unit=Deg. Celsius Watershed=Dry Creek East



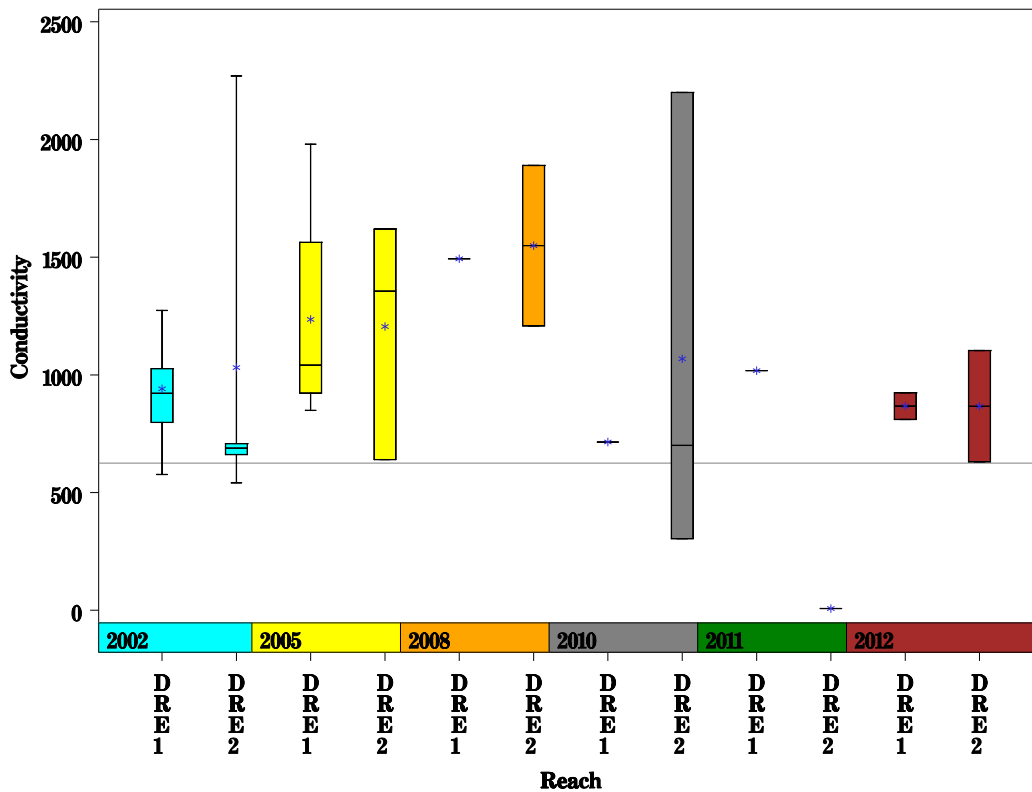
Dry Creek (East) Watershed

Data Summary Graphs – pH and Conductivity (Downstream to Upstream by Year)

Parameter=PH Unit=Standard units Watershed=Dry Creek East



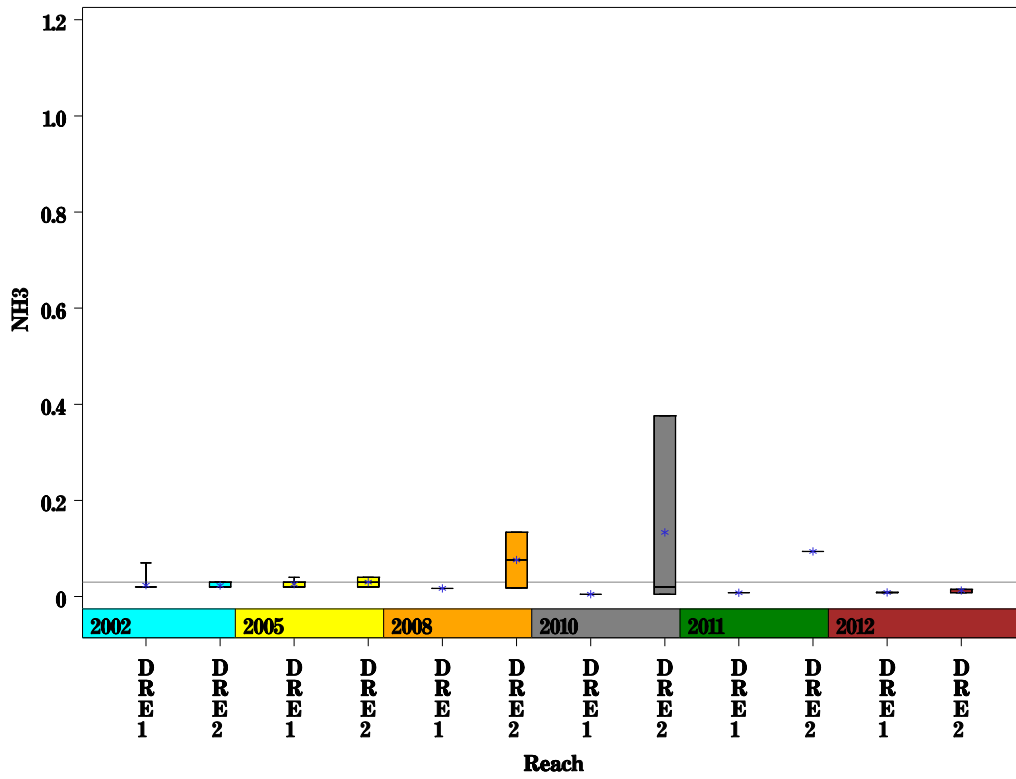
Parameter=CONDUCTIVITY Unit=uS/cm Watershed=Dry Creek East



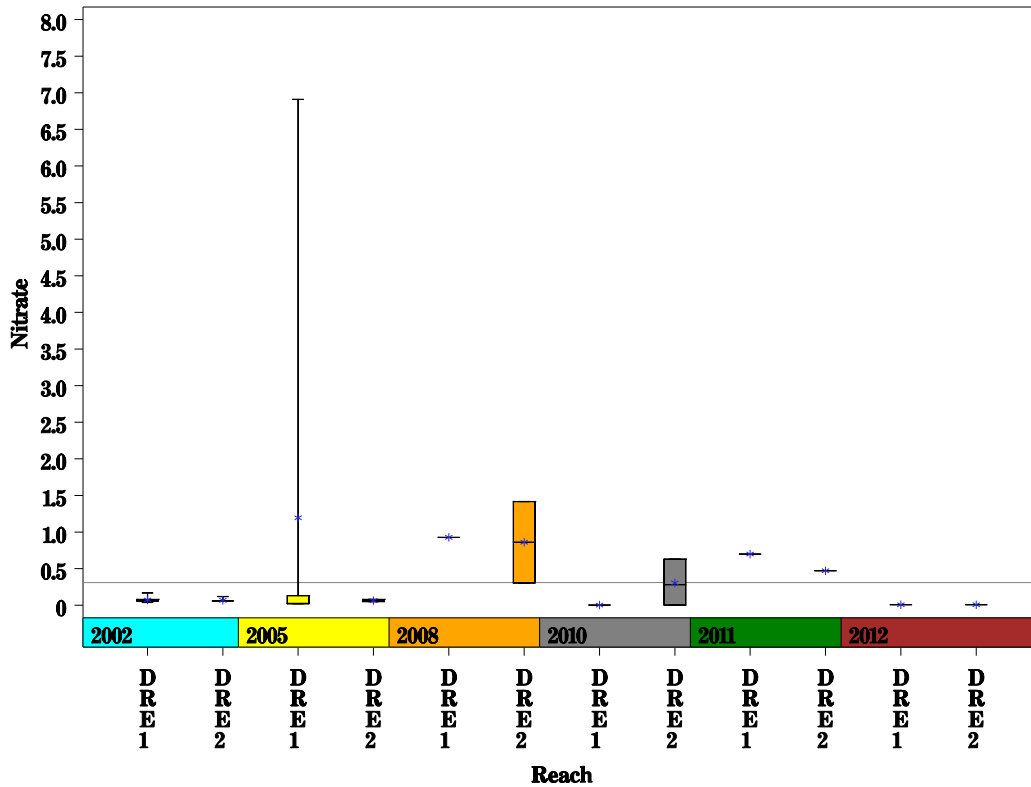
Dry Creek (East) Watershed

Data Summary Graphs – Ammonia and Nitrate/Nitrite (Downstream to Upstream by Year)

Parameter = AMMONIA AS N Unit = MG/L Watershed = Dry Creek East



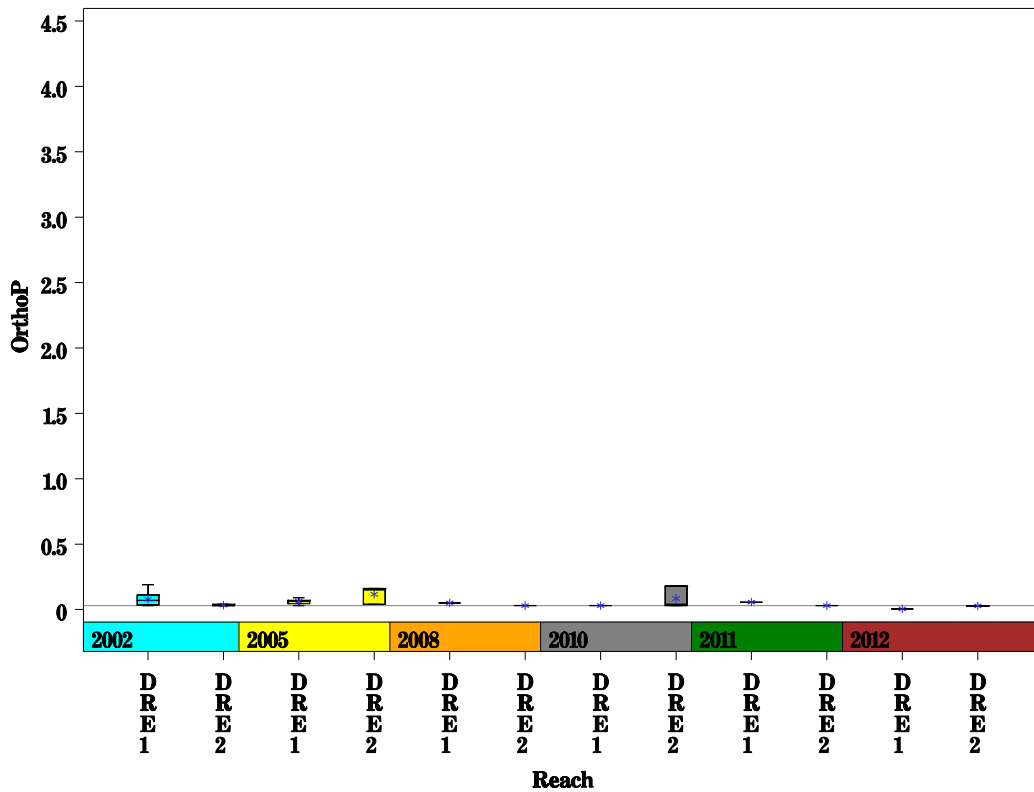
Parameter = NITRATE AS N Unit = MG/L Watershed = Dry Creek East



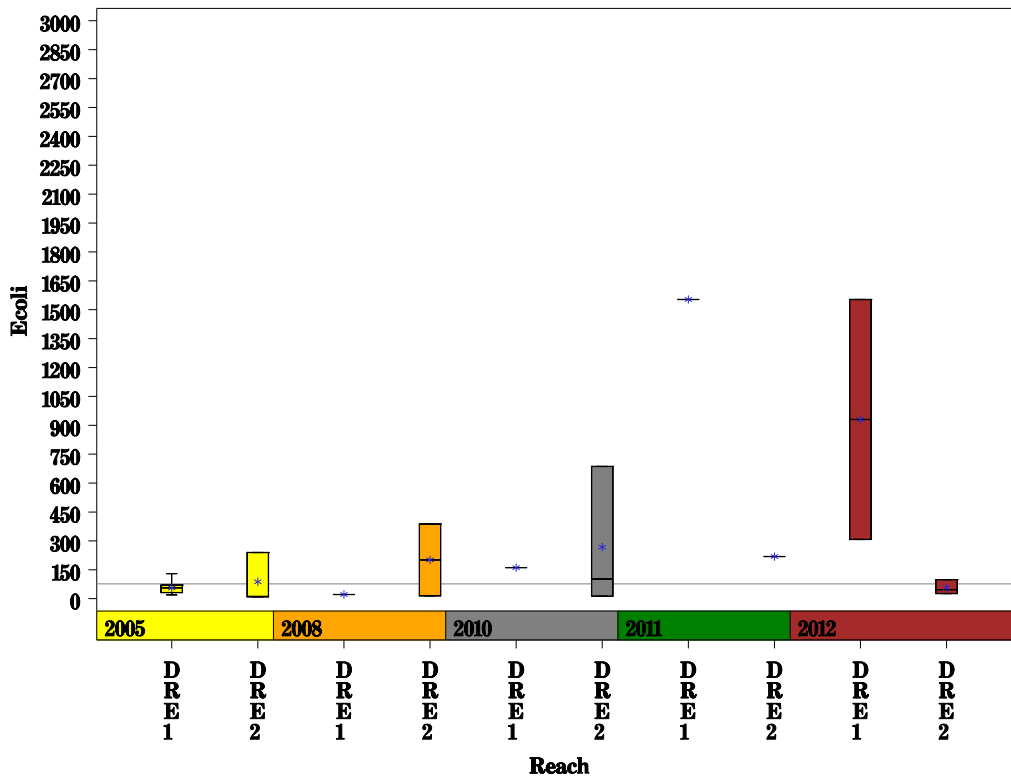
Dry Creek (East) Watershed

Data Summary Graphs – Orthophosphate and E.coli (Downstream to Upstream by Year)

Parameter = ORTHOPHOSPHORUS AS P Unit = MG/L Watershed = Dry Creek East



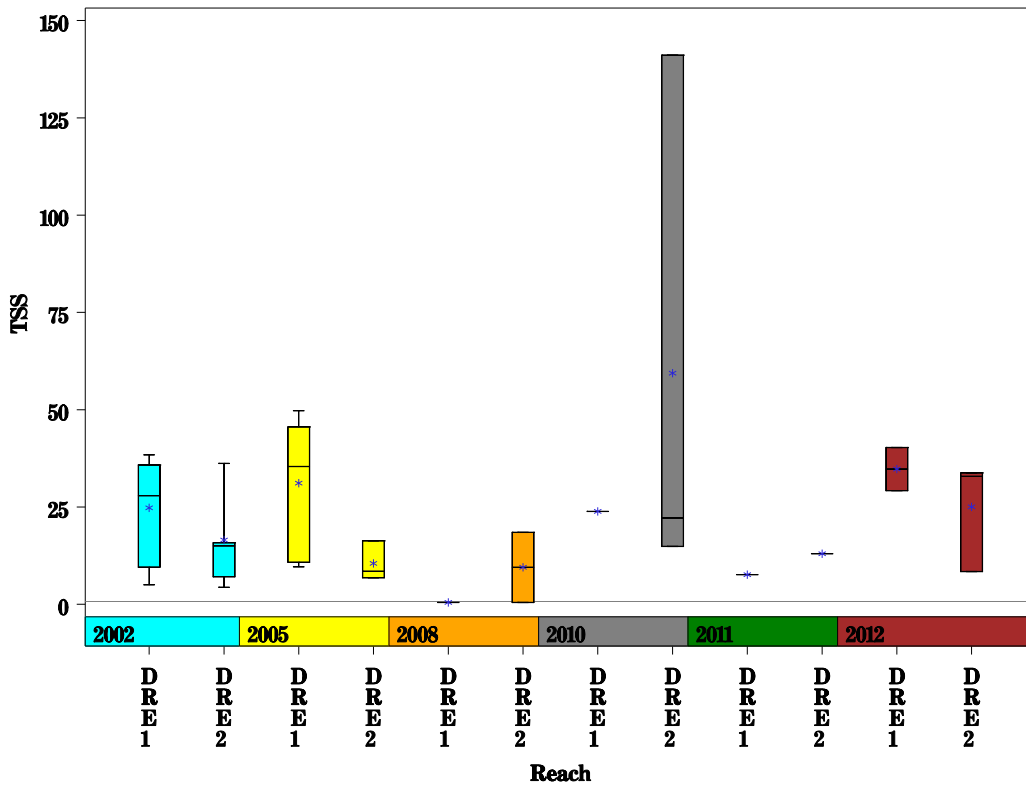
Parameter = E COLI BACTERIA Unit = MPN/100ML Watershed = Dry Creek East



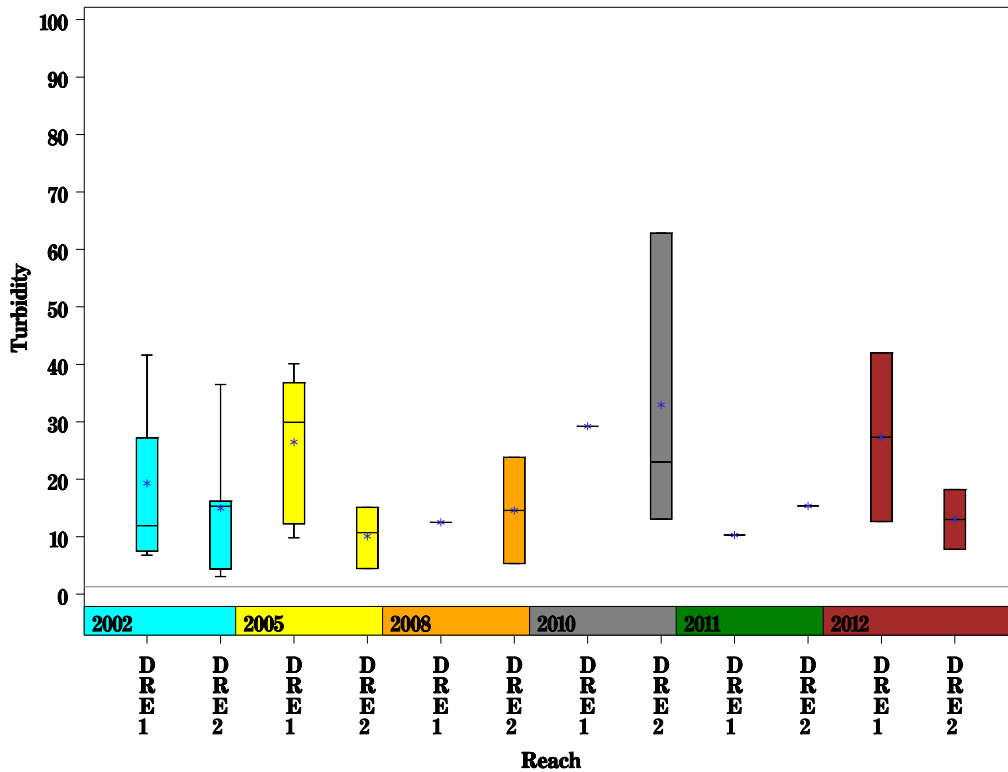
Dry Creek (East) Watershed

Data Summary Graphs – Total Suspended Solids and Turbidity (Downstream to Upstream by Year)

Parameter=TOTAL SUSPENDEED SOLIDS Unit=MG/L Watershed=Dry Creek East

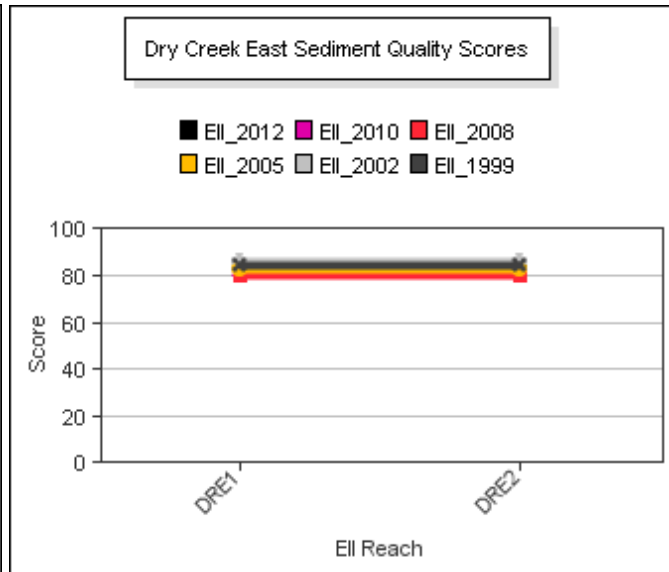
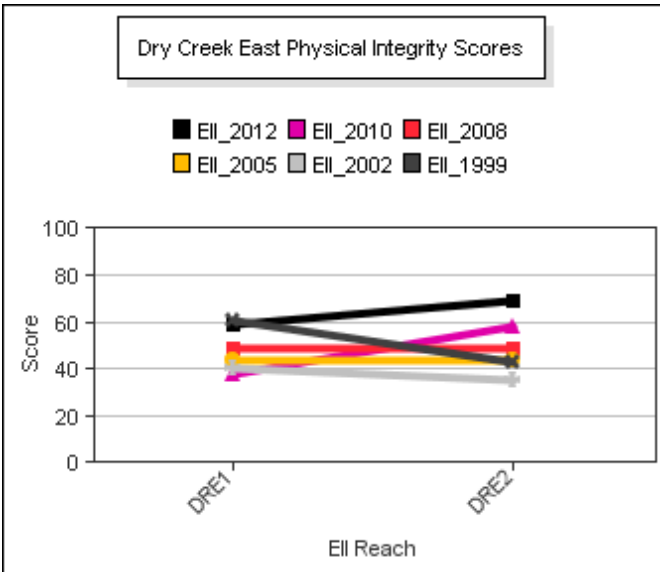
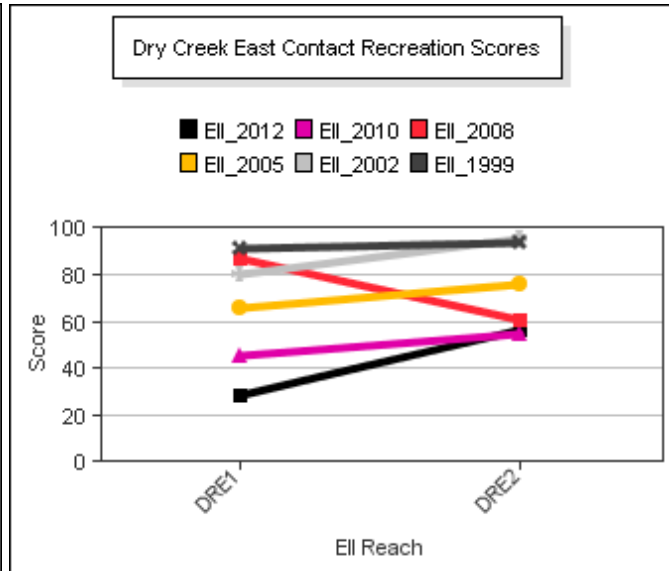
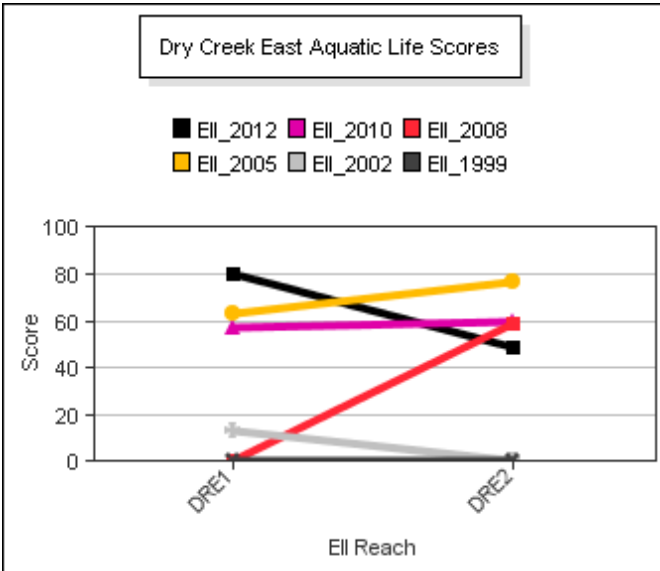
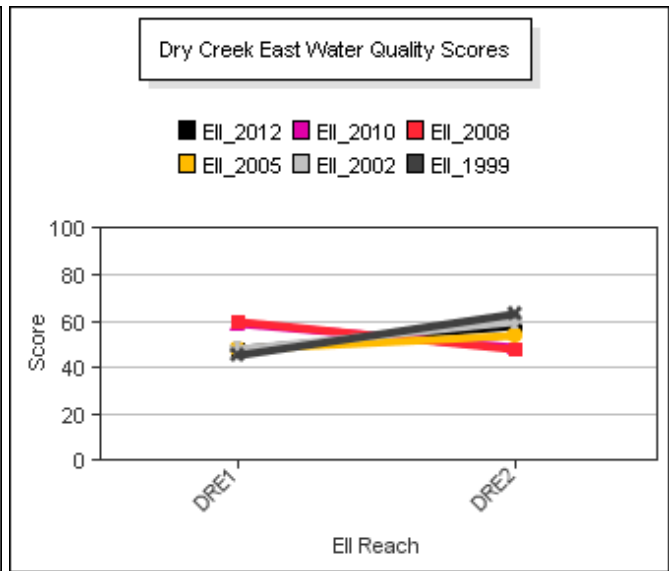
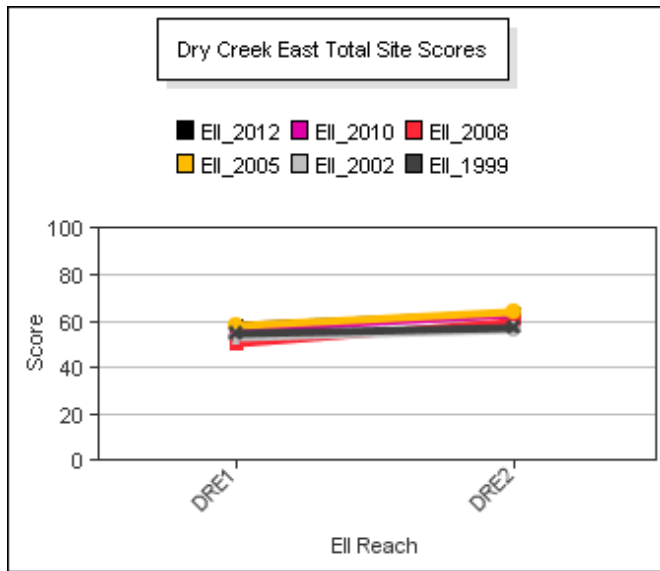


Parameter=TURBIDITY Unit=NTU Watershed=Dry Creek East



Dry Creek (East) Watershed

Score Summary – Reach scores for each sample year



Dry Creek (East) Watershed

Site Photographs



1208_t00-us-02_27_2002



1208_t00-ds-02_27_2002



1209_t00-us-02_27_2002



1209_t00-ds-02_27_2002



1211_00-ur-05_18_2010



1211_00-us-05_18_2010

Dry Creek (East) Watershed

Site Photographs



1210_t00-ur-06_16_2005



1210_t00-ur-02_27_2002



1210_00-us-05_18_2010



1210_00-ds-05_18_2010



1212_t00-us-02_27_2002



1212_t00-ds-06_16_2005

This page left intentionally blank