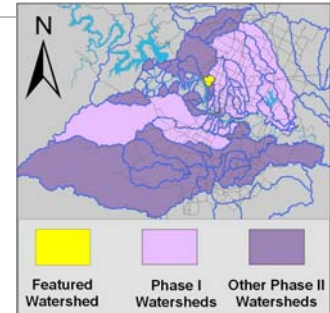


Dry Creek (north) Watershed

Summary Sheet

Catchment	Total area	2.1 sq. miles				
	Area in recharge	0.3 sq. miles				
	Creek length	2.4 miles				
	Receiving water	Lake Austin				
Demographics	2000 population	unknown				
	2030 projected population	unknown				
	30 year projected % increase	unknown				
Land Use	Impervious cover (2003 estimate)	22.1 %				
Overall EII Scores	2001	2004	2007	2010	2012	
	69	64	63	68	72	



Flow Regime* for Sample Sites on Dry Creek (North)

Site #	Site Name	2004						2007					2010				2011	2012		
		Mar	May	May	Jun	Oct	Dec	Feb	May	Jun	Sep	Dec	Mar	May	May	Oct	Dec	Mar	Apr	
		WQ	WQ	Bio	WQ	WQ	WQ	WQ	WQ	Bio	WQ	WQ	WQ	WQ	Bio	WQ	WQ	WQ	Bio	
1109	FM 2222	B	B	B	B	B	B	B	B	S	B	B	B	B	B	B	B	B	B	B
1110	Highland Pass	B	B	B	B	B	B													
1108	Mt Bonnel Rd	B	B	B	B	B	B	B	B	S	B	B	B	B	B	B	B	B	B	B

* B = baseflow n = no flow storm = storm flow blue = Samples were taken grey = Samples were not taken blank = not visited

Summary of 2012 Data for Dry Creek (North)

Summary	Parameter	Mean	Max	Min	Discussion
Physicochemical	D.O. mg/l	8.6	9.5	7.9	Within normal range, generally above average.
	pH st.units	8.14	8.3	8.0	Mostly within normal range, some high values.
	Cond uS/cm	639	722	528	Within normal range, generally higher downstream.
Nutrients	NH ₃ mg/l	0.009	0.015	0.008	Generally low.
	NO ₃ mg/l	0.742	1.500	0.020	Within normal range.
	Ortho P mg/l	0.008	0.016	0.004	Within normal range, generally higher upstream.
Sediment Load	TSS mg/l	1.3	2.3	1.0	Within normal range.
	Turbidity ntu	0.78	1.39	0.14	Within normal range.
Biology	E.Coli /100ml	81	112	63	Generally low.

Benthic Macroinvertebrates and Diatoms: evaluations are provided in the introduction of this report

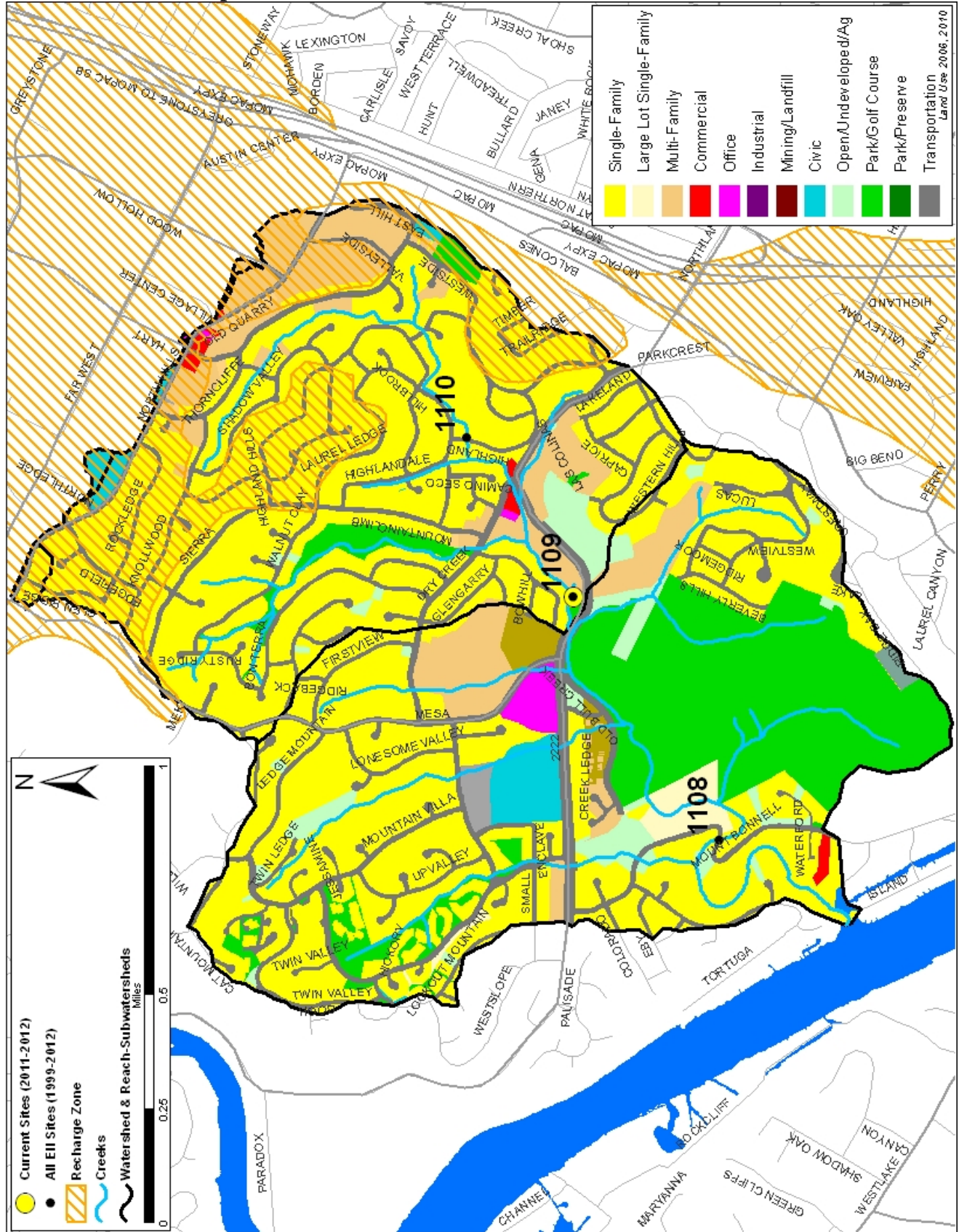
Index scores* for Dry Creek (North) Sites by Year

Reach	Site	Site Name	Year	Water Quality	Sediment**	Contact Rec.	Non-Contact Rec.	Physical Integrity	Aquatic Life	Benthic subindex	Diatom subindex	Total EII Score
DRN1	1108	Dry Creek (North) @ Mt Bonnel Rd	1998	47	60	70	88	71	62	51	72	66
DRN2	1109	Dry Creek (North) @ FM 2222	1998	55	60	86	58	49	55	51	58	61
DRN2	1110	Dry Creek (North) @ Highland Pass	1998	46	60	64	68	59	56	44	68	59
DRN1	1108	Dry Creek (North) @ Mt Bonnel Rd	2001	47	90	73	88	77	49	33	64	67
DRN2	1109	Dry Creek (North) @ FM 2222	2001	54	90	80	76	61	37	25	49	63
DRN2	1110	Dry Creek (North) @ Highland Pass	2001	49	90	83	81	72	49	39	58	67
DRN1	1108	Dry Creek (North) @ Mt Bonnel Rd	2004	62	72	40	77	69	68	67	69	65
DRN2	1109	Dry Creek (North) @ FM 2222	2004	58	72	42	75	64	57	56	57	61
DRN2	1110	Dry Creek (North) @ Highland Pass	2004	49	72	41	98	72	62	53	70	66
DRN1	1108	Dry Creek (North) @ Mt Bonnel Rd	2007	60	60	45	86	71	86	77	95	68
DRN2	1109	Dry Creek (North) @ FM 2222	2007	58	60	40	82	60	49	27	70	58
DRN1	1108	Dry Creek (North) @ Mt Bonnel Rd	2010	58	66	46	84	74	80	74	85	68
DRN2	1109	Dry Creek (North) @ FM 2222	2010	59	66	36	93	71	74	73	75	67
DRN1	1108	Dry Creek (North) @ Mt Bonnel Rd	2012	64	63	49	98	79	88	93	83	74
DRN2	1109	Dry Creek (North) @ FM 2222	2012	61	63	54	82	71	87	100	74	70

* blank cells indicate parameter was not collected, blank row indicate site was dropped **sediment samples only collected at the downstream site
 100-87.5 Excellent 87.5-75 V. Good 75-62.5 Good 62.5-50 Fair 50-37.5 Marginal 37.5-25 Poor 25-12.5 Bad 12.5-0 V. Bad

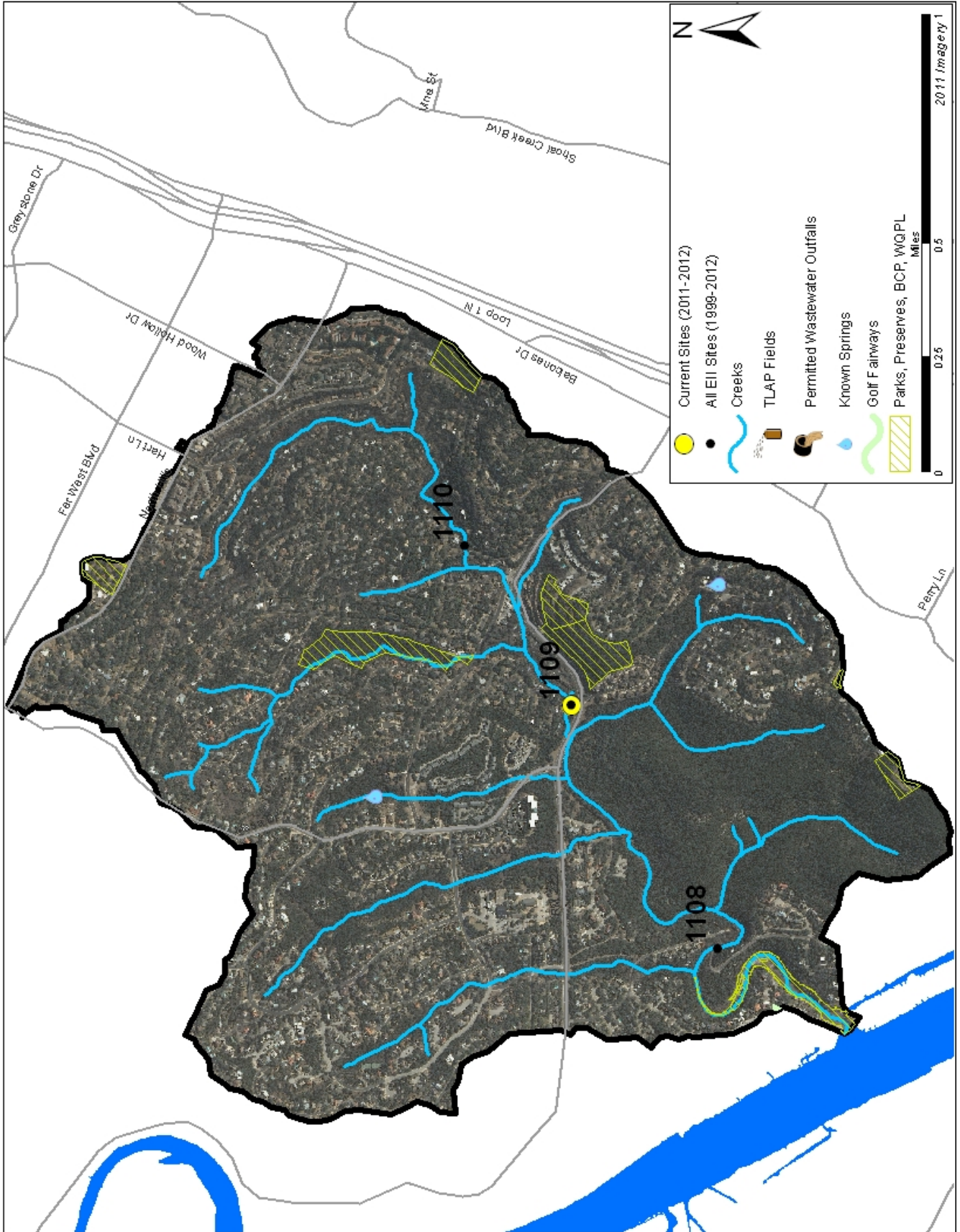
Dry Creek Watershed

Land Use Map



Dry Creek Watershed

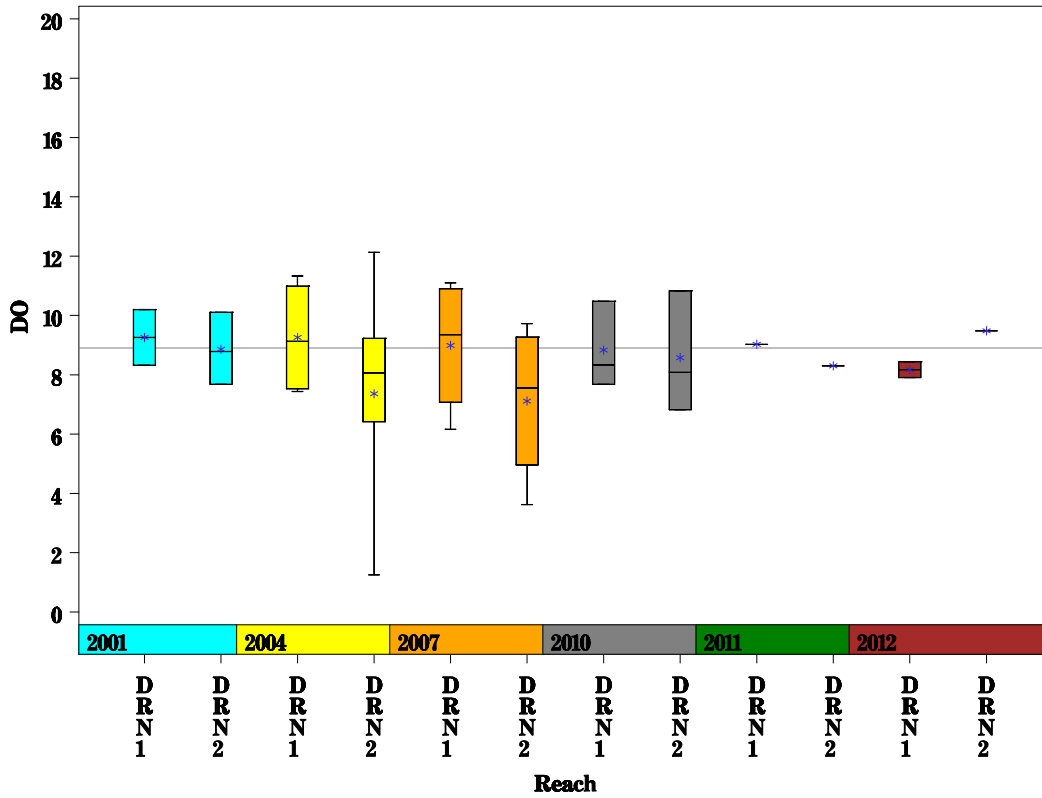
Aerial Map



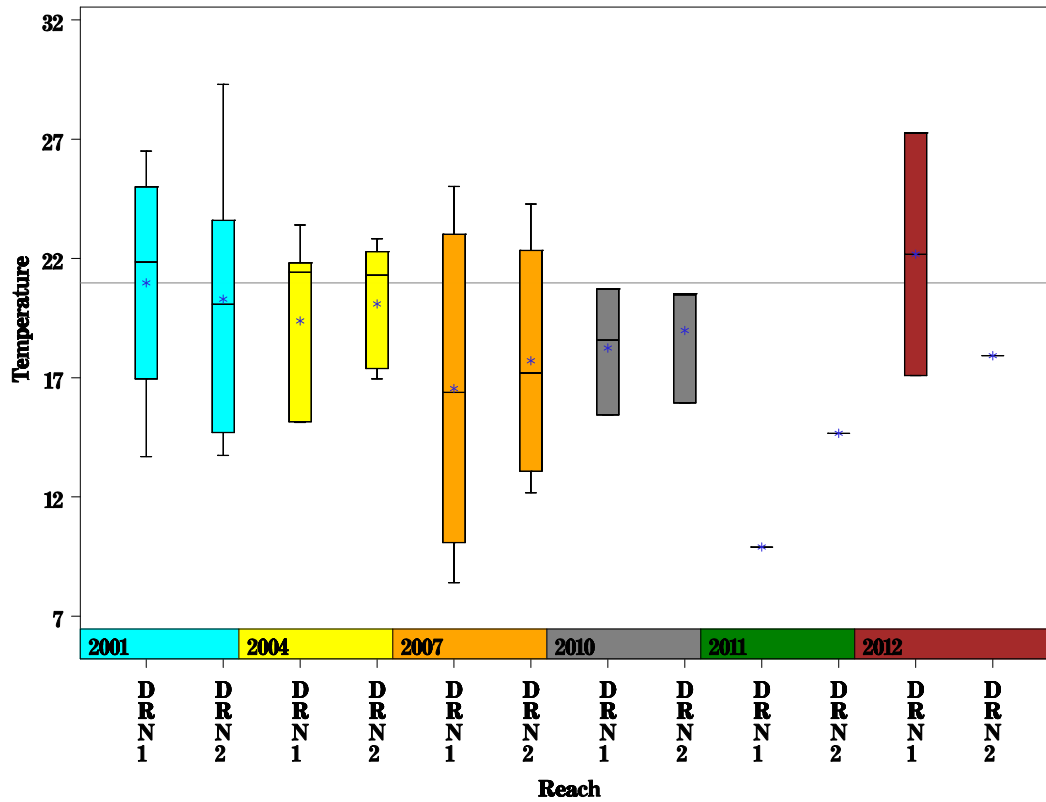
Dry Creek Watershed

Data Summary Graphs – Dissolved Oxygen and Temperature (Downstream to Upstream by Year)

Parameter = DISSOLVED OXYGEN Unit = MG/L Watershed = Dry Creek North

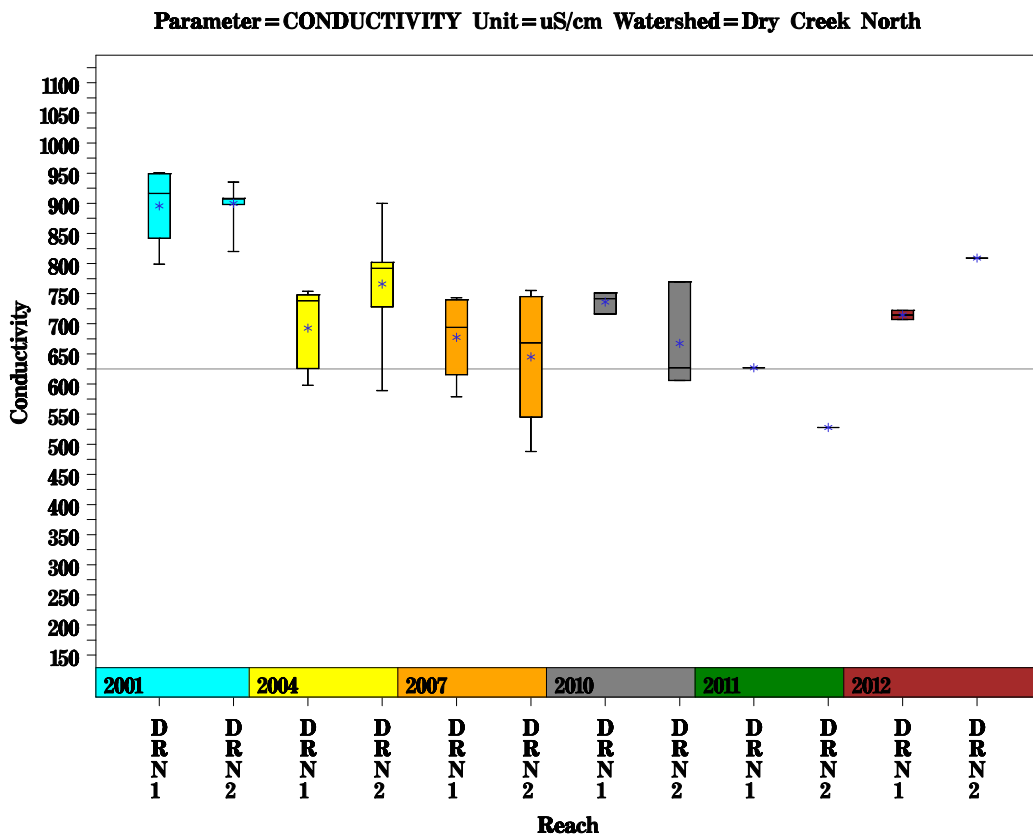
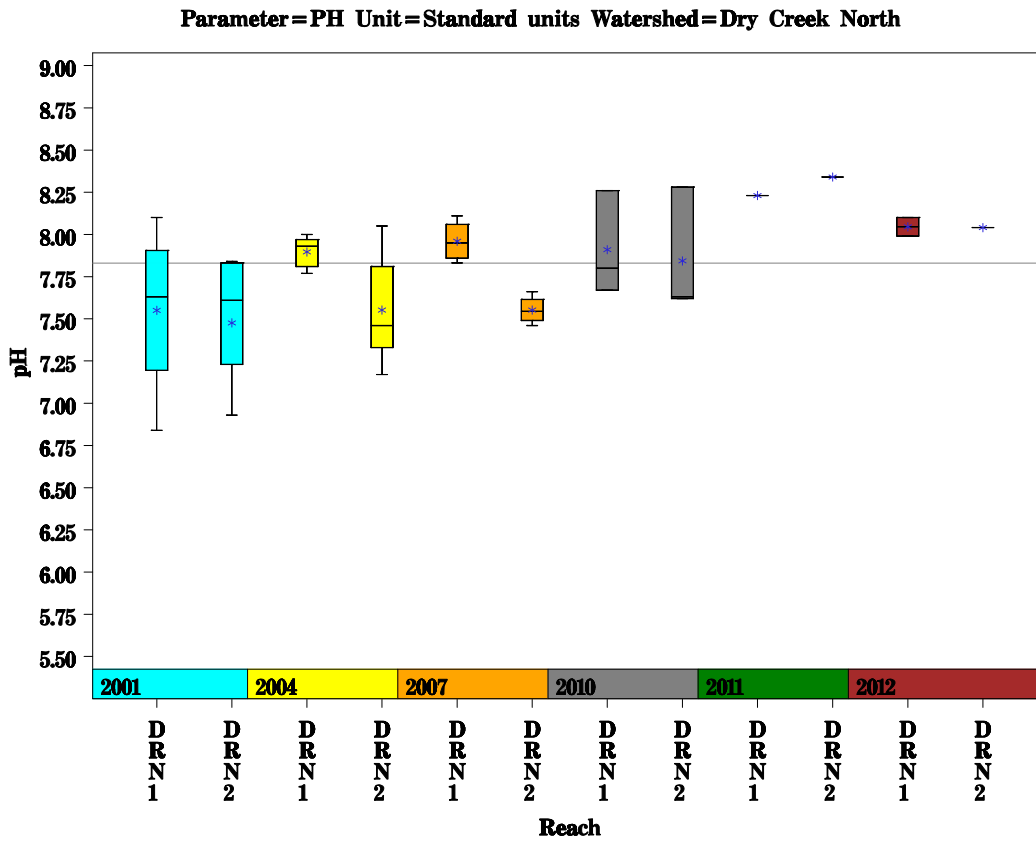


Parameter = WATER TEMPERATURE Unit = Deg. Celsius Watershed = Dry Creek North



Dry Creek Watershed

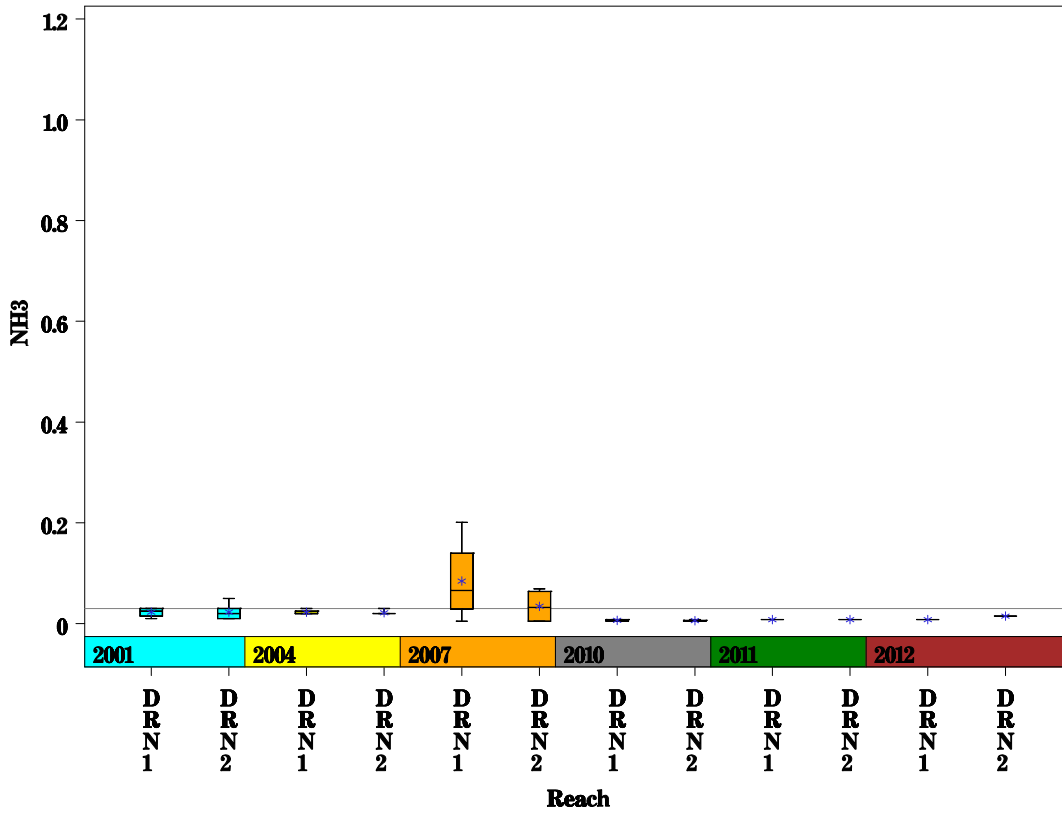
Data Summary Graphs – pH and Conductivity (Downstream to Upstream by Year)



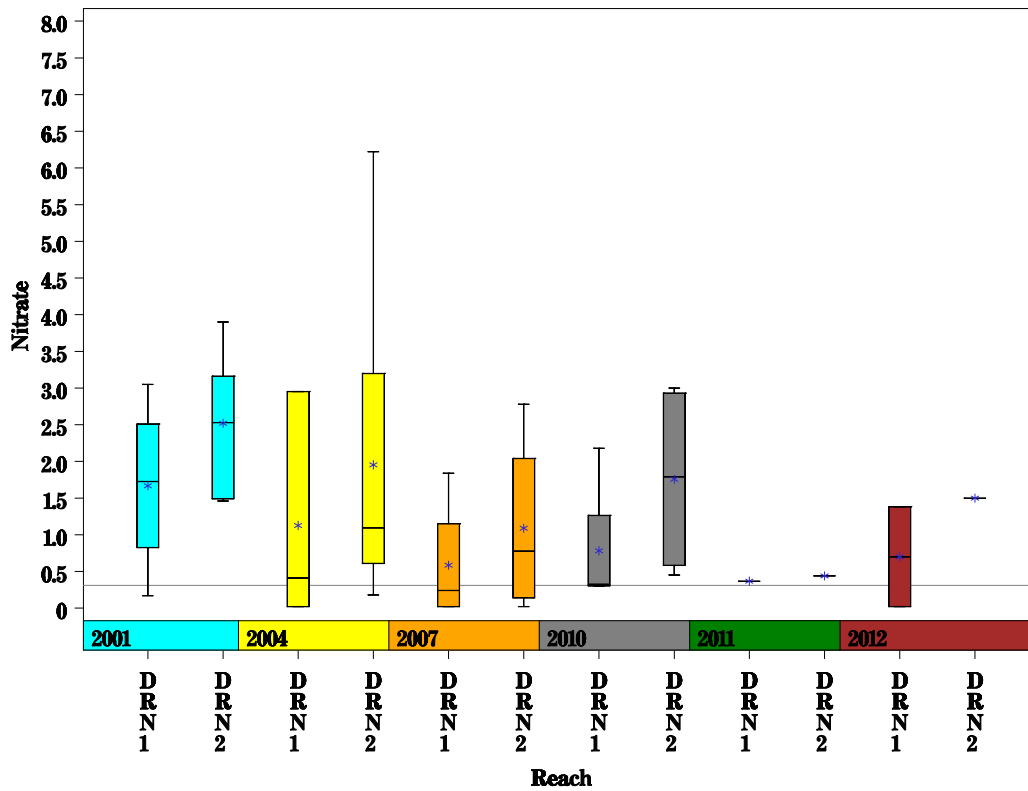
Dry Creek Watershed

Data Summary Graphs – Ammonia and Nitrate/Nitrite (Downstream to Upstream by Year)

Parameter=AMMONIA AS N Unit=MG/L Watershed=Dry Creek North

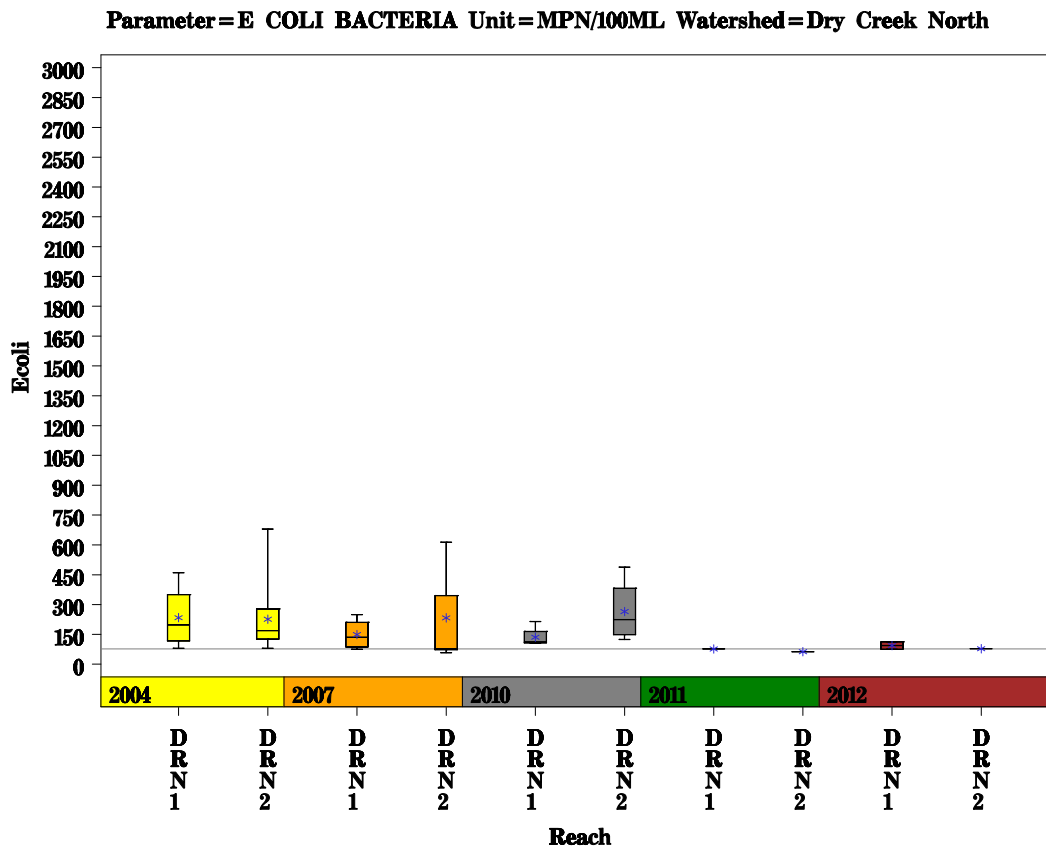
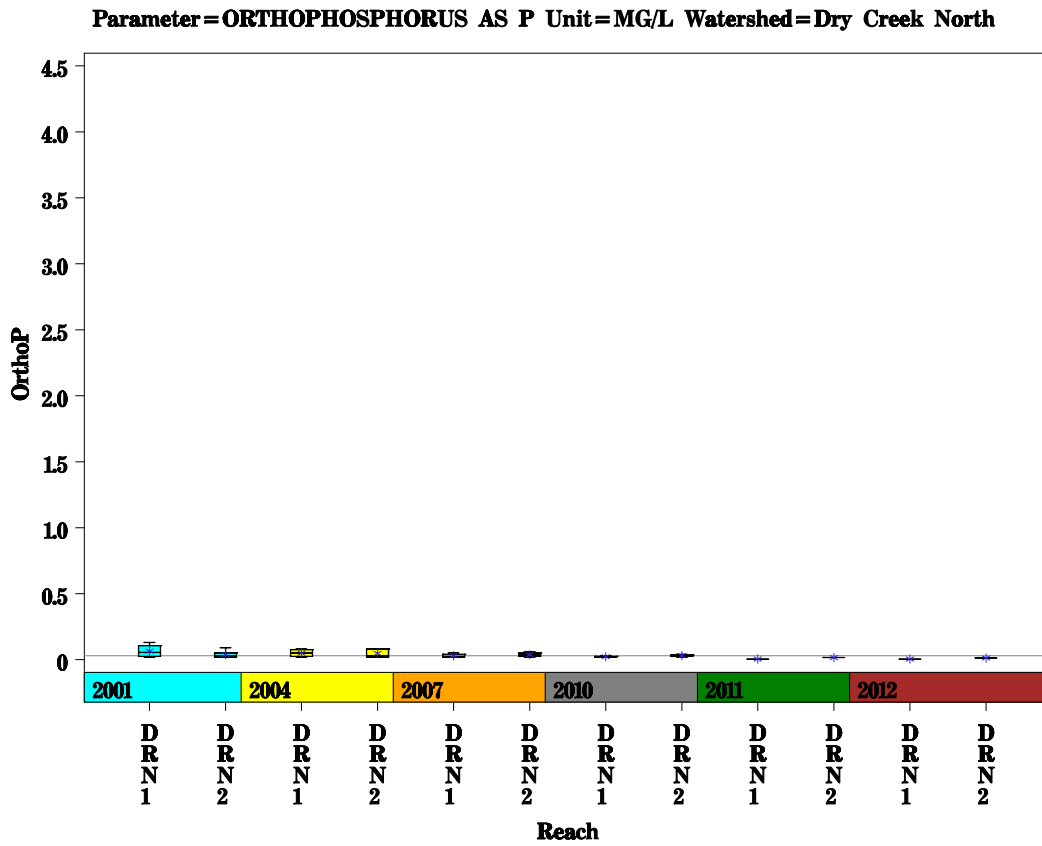


Parameter=NITRATE AS N Unit=MG/L Watershed=Dry Creek North



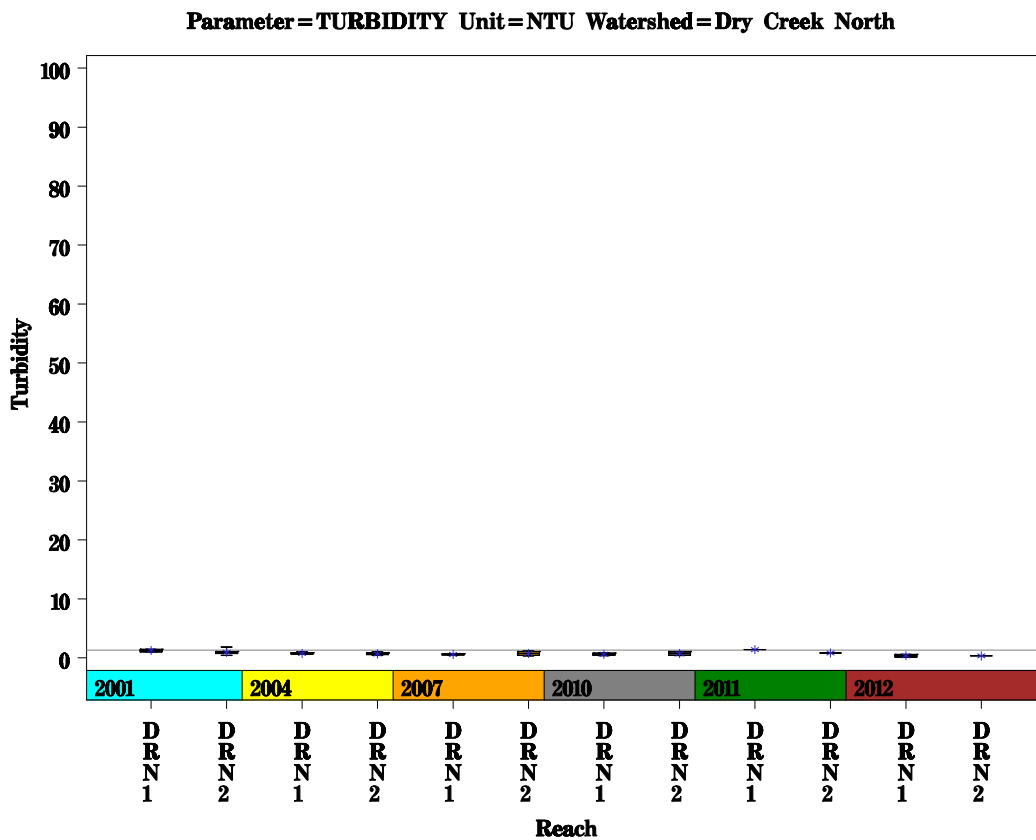
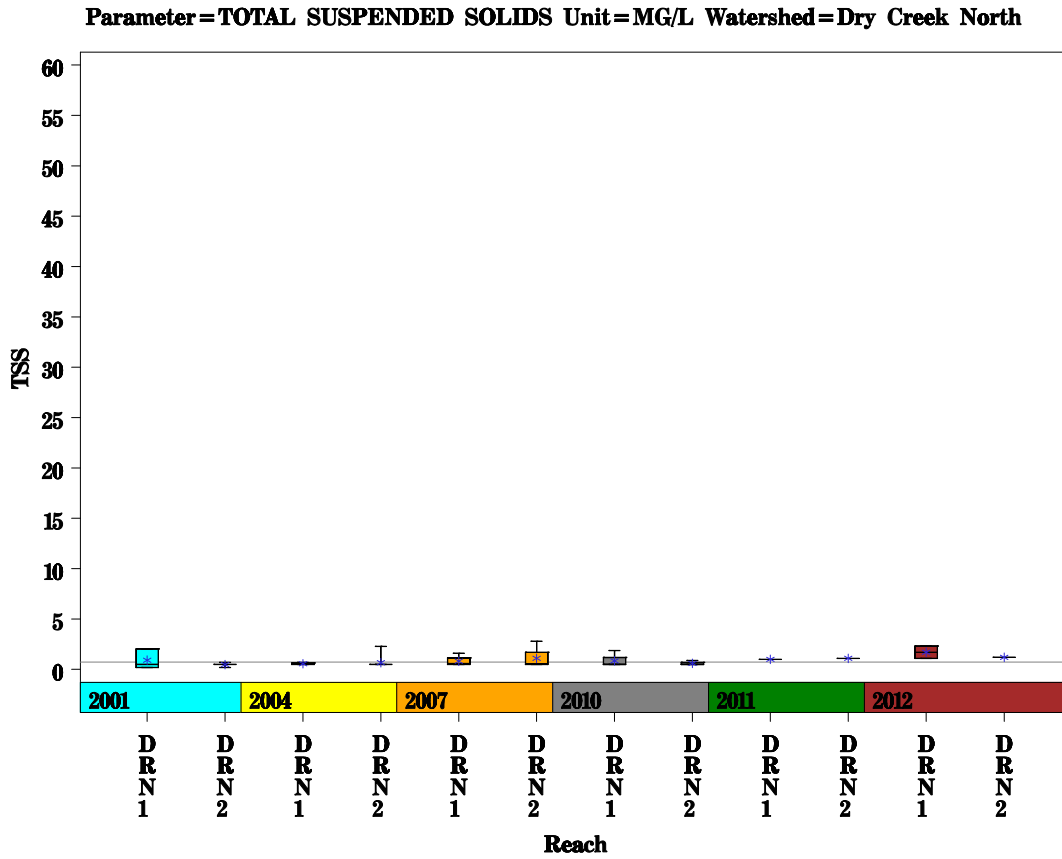
Dry Creek Watershed

Data Summary Graphs – Orthophosphate and E.coli (Downstream to Upstream by Year)



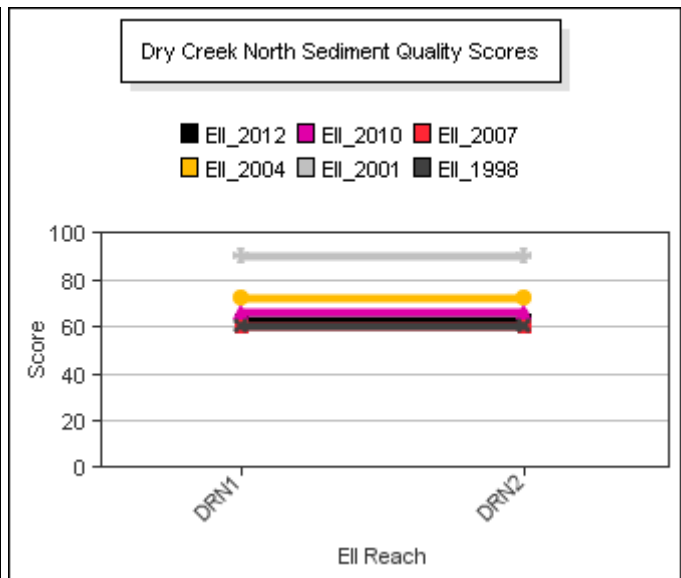
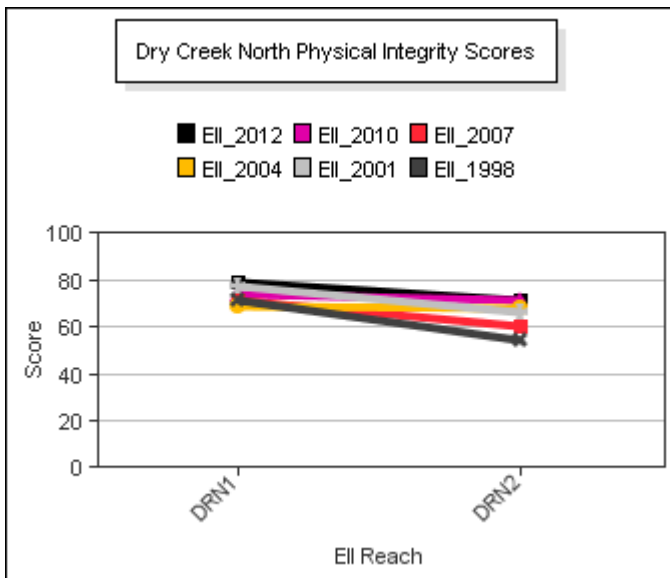
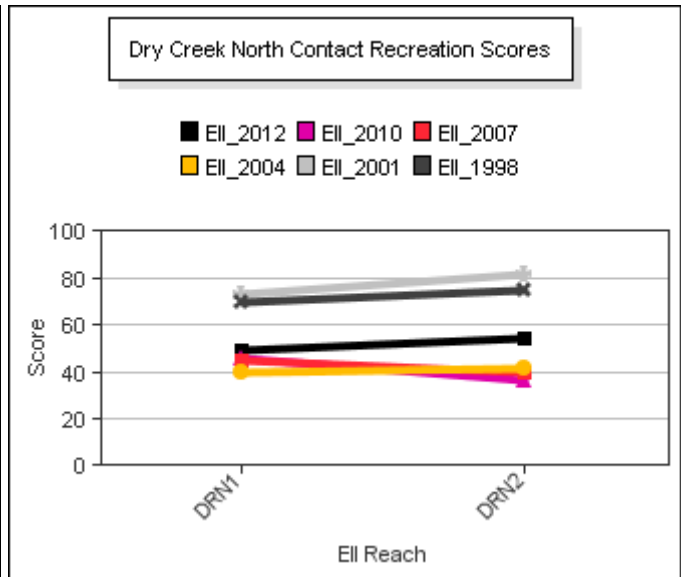
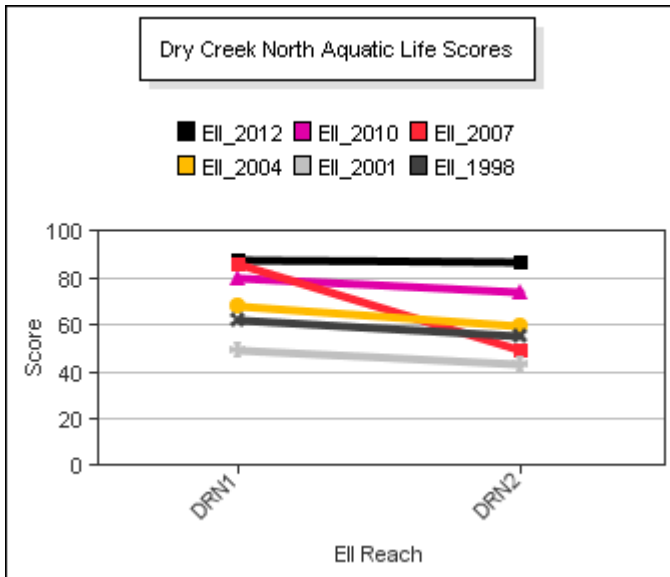
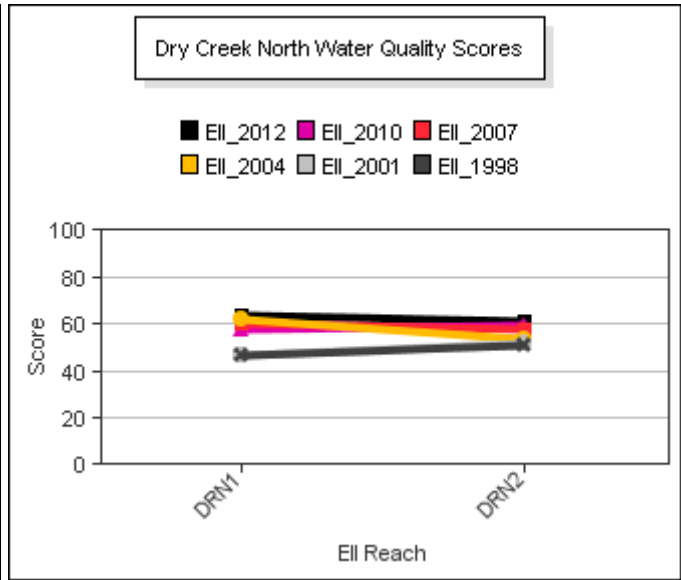
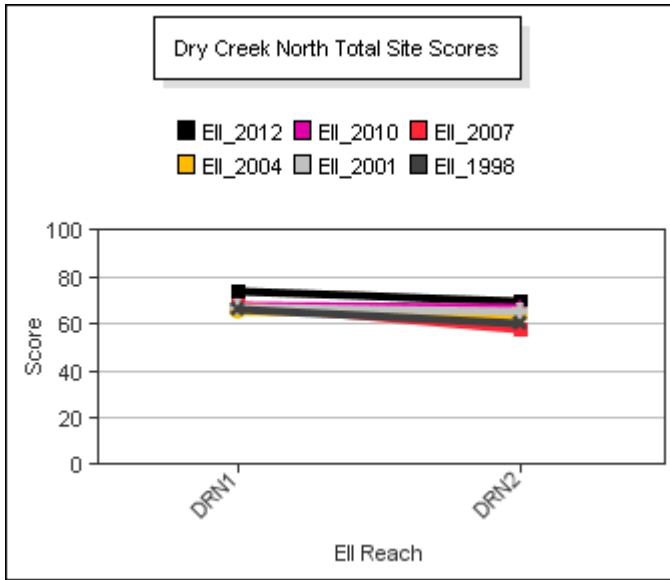
Dry Creek Watershed

Data Summary Graphs – Total Suspended Solids and Turbidity (Downstream to Upstream by Year)



Dry Creek Watershed

Score Summary – Reach scores for each sample year



Dry Creek Watershed

Site Photographs



1110_t00-us-05_17_2004



1110_t00-ds-05_17_2004



1109_t00-us-05_17_2004



1109_t00-ds-05_17_2004



1109_ur_06_18_2007



1109_ds_06_18_2007

Dry Creek Watershed

Site Photographs



1108_t00-ds-05_17_2004



1108_t00-us-05_17_2004



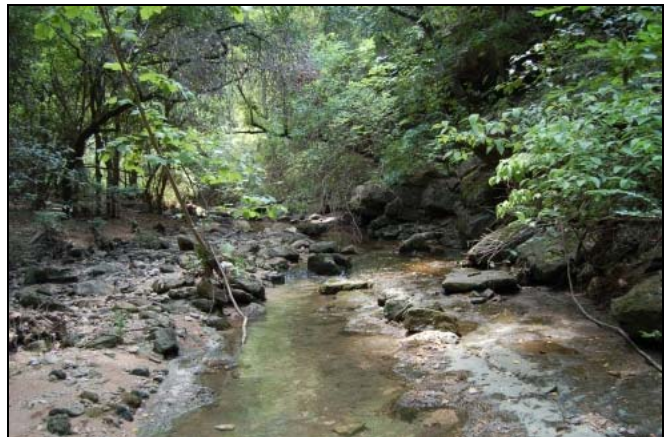
1108_ds_06_18_2007



1108_ur_06_18_2007



1108_00-ds-05_17_2010



1108_00-us-05_17_2010

This page left intentionally blank