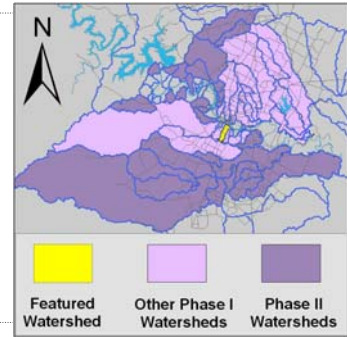


East Bouldin Creek Watershed

Summary Sheet

Catchment	Total area	2 square miles			
	Area in recharge	none			
	Creek length	4 miles			
	Receiving water	Town Lake			
Demographics	2000 population	10,455			
	2030 projected population	12,490			
	30 year projected % increase	19 %			
Land Use	Impervious cover (2003 estimate)	46.42 %			
Overall EII Scores	2000	2003	2006	2009	2011
	50	55	53	47	37



Flow Regime* for Sample Sites on East Bouldin Creek

Site #	Site Name	2003						2006					2009					2010	2011			
		Feb	Mar	Mar	May	Sep	Dec	Feb	May	Jul	Aug	Nov	Feb	May	Jun	Oct	Dec	Dec	Mar	Jun	Jun	Sep
		WQ	WQ	Bio	WQ	WQ	WQ	WQ	WQ	Bio	WQ	WQ	WQ	WQ	Bio	WQ	WQ	WQ	WQ	WQ	Bio	WQ
121	Alpine	B	B	B	B	n	n	B	B	B	n	n	n	n	n	B	B	n	n	n	n	n
119	Elizabeth	B	B	B	B	B	B	B	B	B	n	B	n	B	B	B	B	B	B	B	B	B
120	S Austin Center	B	B	B	B	B	n															
115	Riverside	B	B	B	B	B	n															
1338	Post Oak							B	B	B	n	n	n	n	n	B	B	B	B	B	B	n

* B = baseflow n = no flow S = storm flow blue = Samples were taken grey = Samples were not taken blank = not visited

Summary of 2011 Data for East Bouldin Creek

Summary	Parameter	Mean	Max	Min	Discussion
Physicochemical	D.O. mg/l	3.9	6.8	1.0	Below average to low concentrations.
	pH st.units	7.56	7.84	7.28	Low values at site 1338.
	Cond uS/cm	783	889	585	Within normal range.
Nutrients	NH ₃ mg/l	0.114	0.320	0.011	Above average to high values at both sites.
	NO ₃ mg/l	0.014	0.040	0.008	Within normal range, generally low.
	Ortho P mg/l	0.156	0.280	0.100	Mostly within normal range with some high values.
Sediment Load	TSS mg/l	3.6	6.1	1.8	Some above average values, but within normal range.
	Turbidity ntu	3.99	7.09	1.55	Some above average values, but within normal range.
Biology	E.Coli /100ml	965	2420	41	Wide range with some very high values at site 119.
	Benthic Macroinvertebrates and Diatoms: evaluations are provided in the introduction of this report				

Index scores* for East Bouldin Creek Sites by Year

Reach	Site	Site Name	Year	Water Quality	Sediment**	Contact Recreation	Non-Contact Rec.	Physical Integrity	Aquatic Life	Benthic subindex	Diatom subindex	Total EII Score
EBO1	115	East Bouldin Creek @ Riverside Dr	2000	39	62	53	49	30	29	35	23	44
EBO2	119	East Bouldin Creek @ Elizabeth St	2000	51	62	57	56	88	29	27	30	57
EBO2	120	East Bouldin Creek @ South Austin Center	2000	55	62	59	67	31	26	27	25	50
EBO3	121	East Bouldin Creek Downstream of W. Alpine Rd	2000	61	62	76	49	22	29	33	25	50
EBO1	115	East Bouldin Creek @ Riverside Dr	2003	35	68	40	46	57	35	52	18	47
EBO2	119	East Bouldin Creek @ Elizabeth St	2003	43	68	52	88	69	22	16	28	57
EBO2	120	East Bouldin Creek @ South Austin Center	2003	54	68	49	71	46	26	26	25	52
EBO3	121	East Bouldin Creek Downstream of W. Alpine Rd	2003	56	68	83	83	46	34	26	42	62
EBO1	1338	East Bouldin Creek @ Post Oak	2006	59	42	34	83	57	57	47	66	55
EBO2	119	East Bouldin Creek @ Elizabeth St	2006	55	42	52	77	60	58	57	58	57
EBO3	121	East Bouldin Creek Downstream of W. Alpine Rd	2006	51	42	43	58	47	26	27	25	45
EBO1	1338	East Bouldin Creek @ Post Oak	2009	59	61	33	57	57				45
EBO2	119	East Bouldin Creek @ Elizabeth St	2009	50	61	57	52	52	51	32	70	51
EBO3	121	East Bouldin Creek Downstream of W. Alpine Rd	2009	68	61	38	20	45	47	47		47
EBO1	1338	East Bouldin Creek @ Post Oak	2011	50		27	40	48				33
EBO2	119	East Bouldin Creek @ Elizabeth St	2011	50		46	42	40	56	25	87	47
EBO3	121	East Bouldin Creek Downstream of W. Alpine Rd	2011				42	30				24

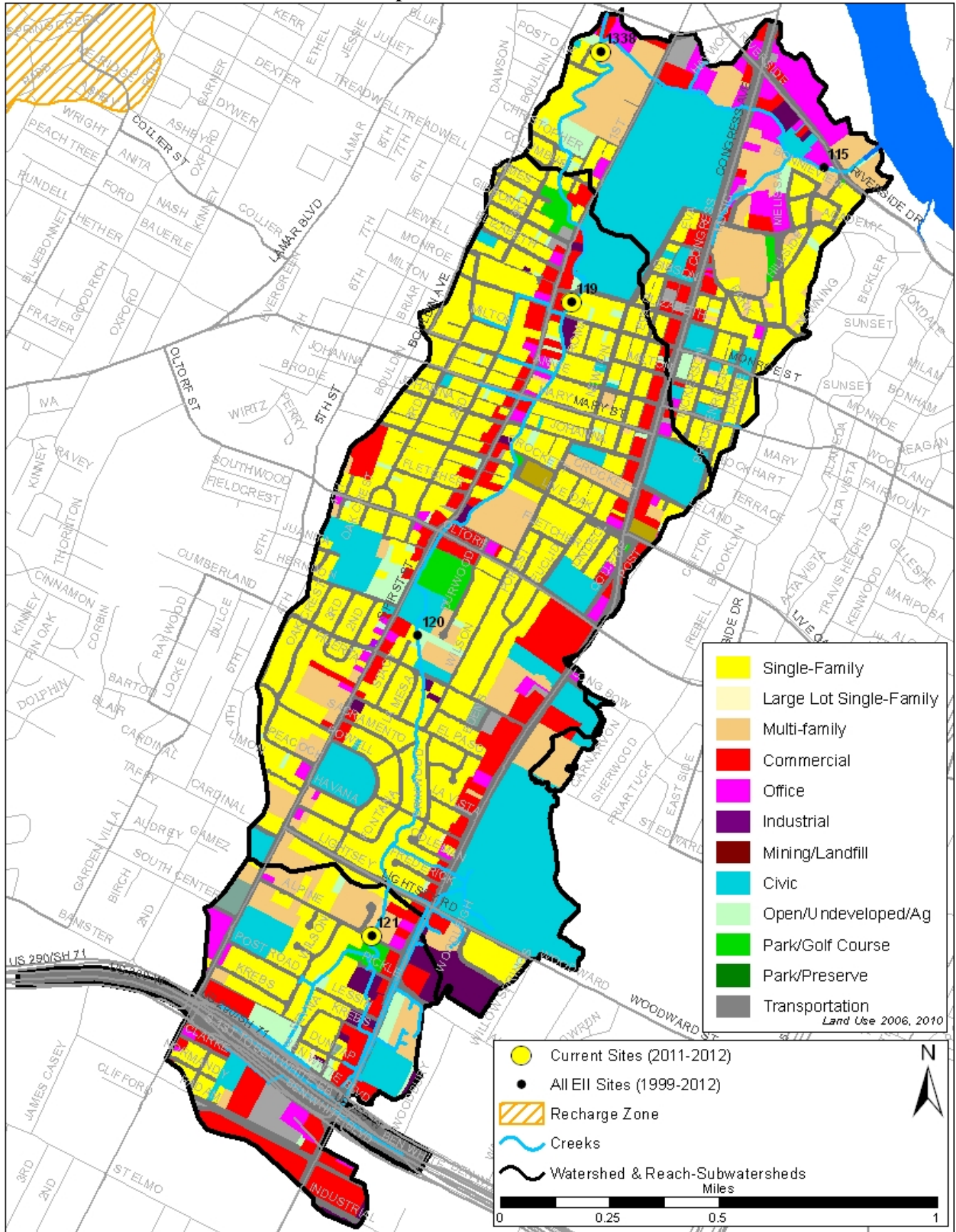
* blank cells indicate parameter was not collected, blank row indicate site was dropped

**sediment samples only collected at the downstream site

100-87.5 Excellent 87.5-75 V. Good 75-62.5 Good 62.5-50 Fair 50-37.5 Marginal 37.5-25 Poor 25-12.5 Bad 12.5-0 V. Bad

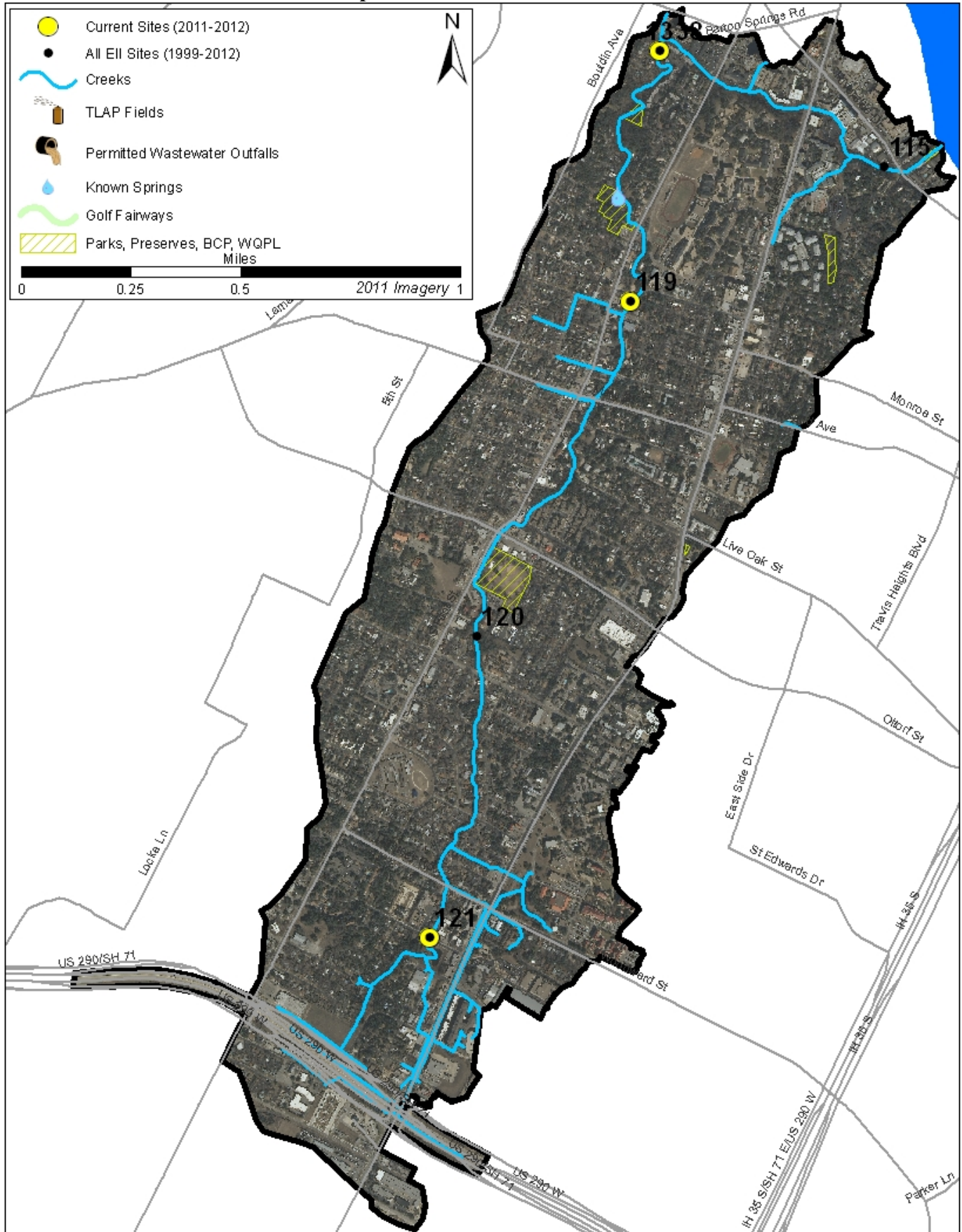
East Bouldin Creek Watershed

Land Use Map



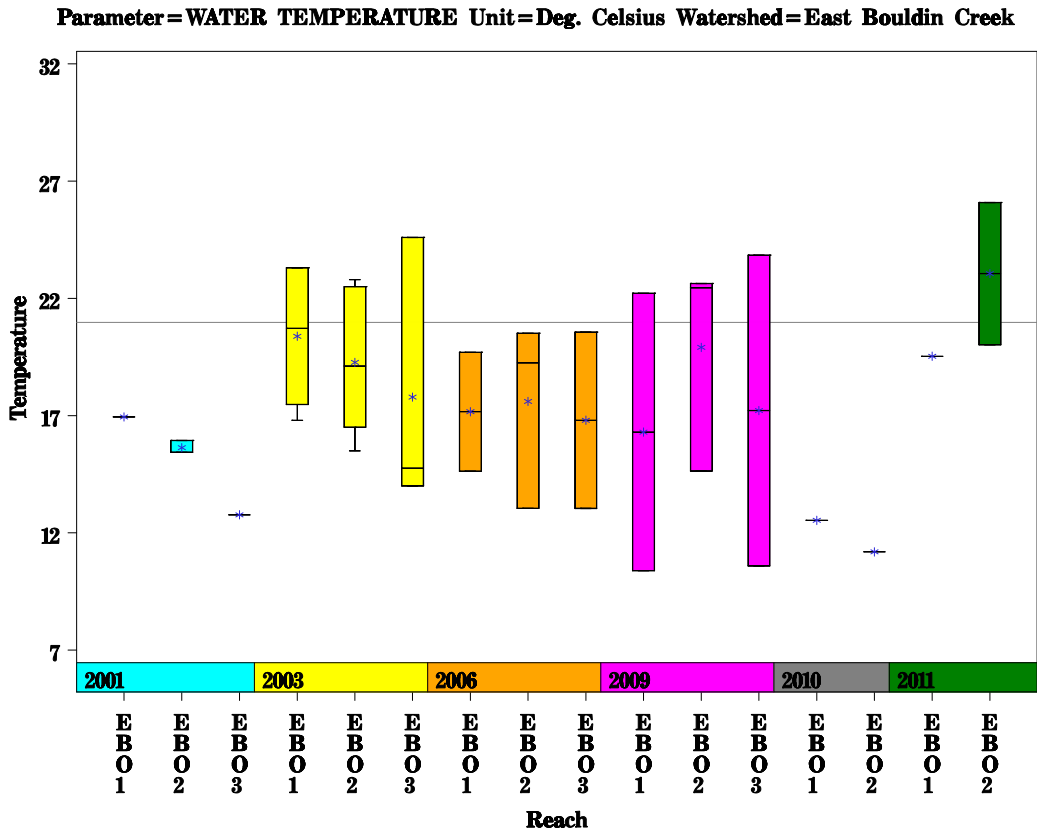
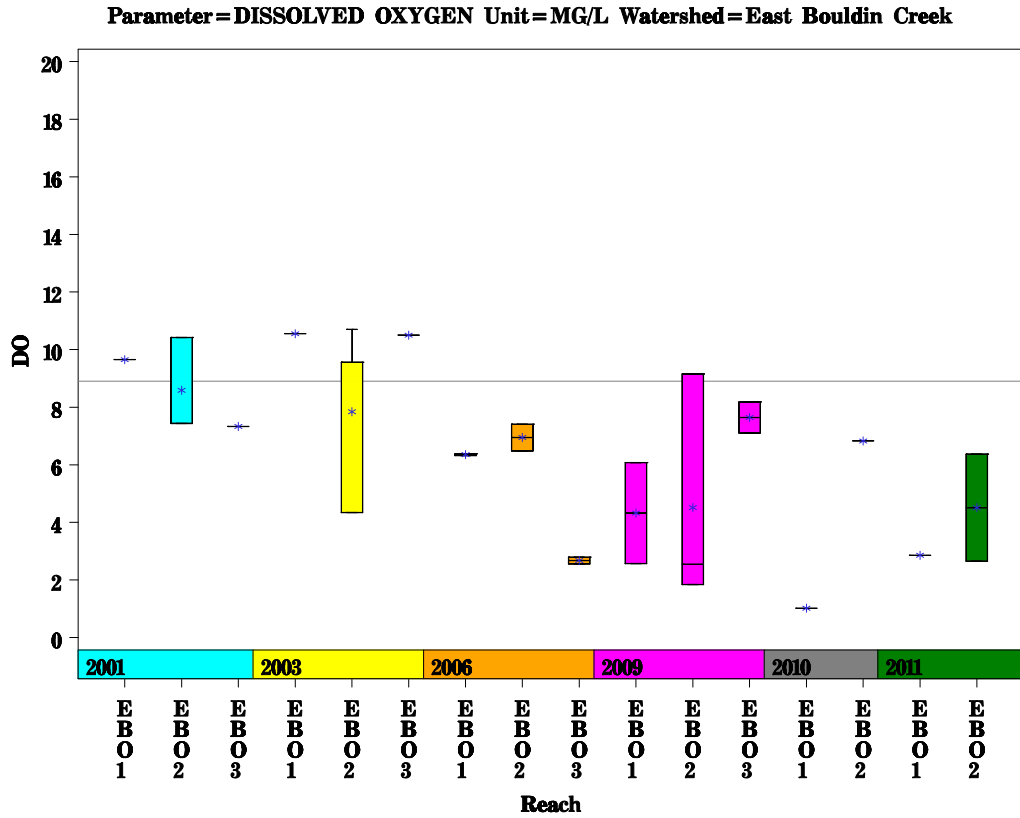
East Bouldin Creek Watershed

Aerial Map



East Bouldin Creek Watershed

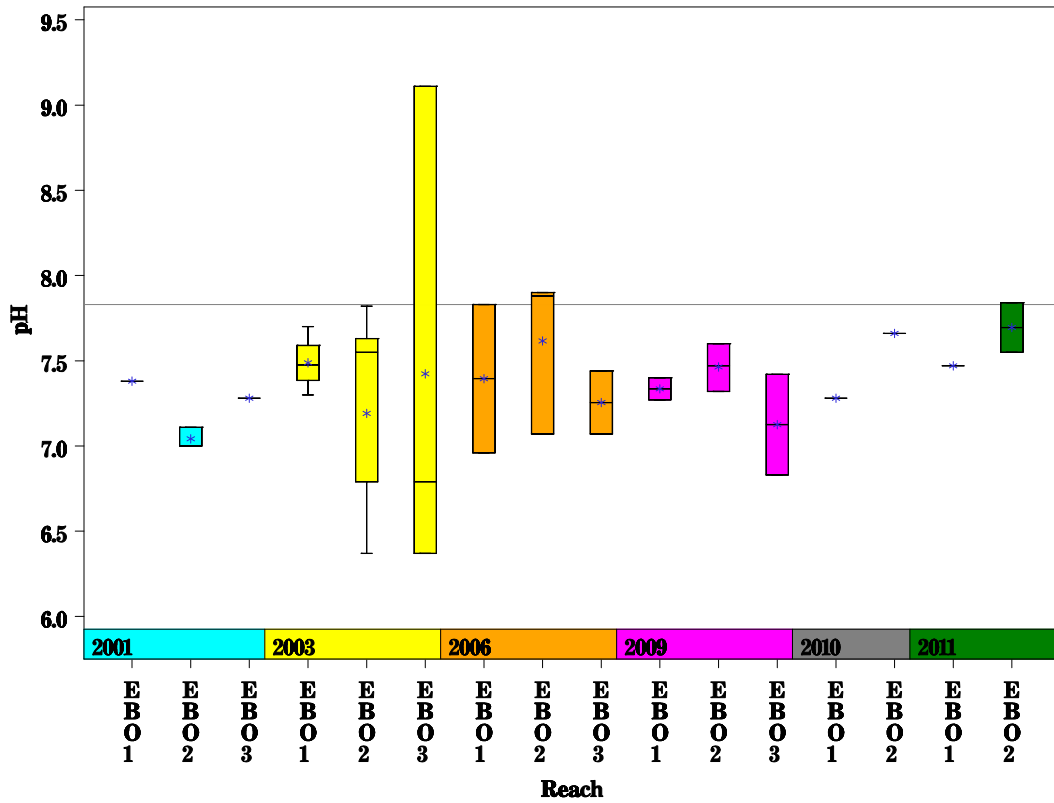
Data Summary Graphs – Dissolved Oxygen and Temperature (Downstream to Upstream by Year)



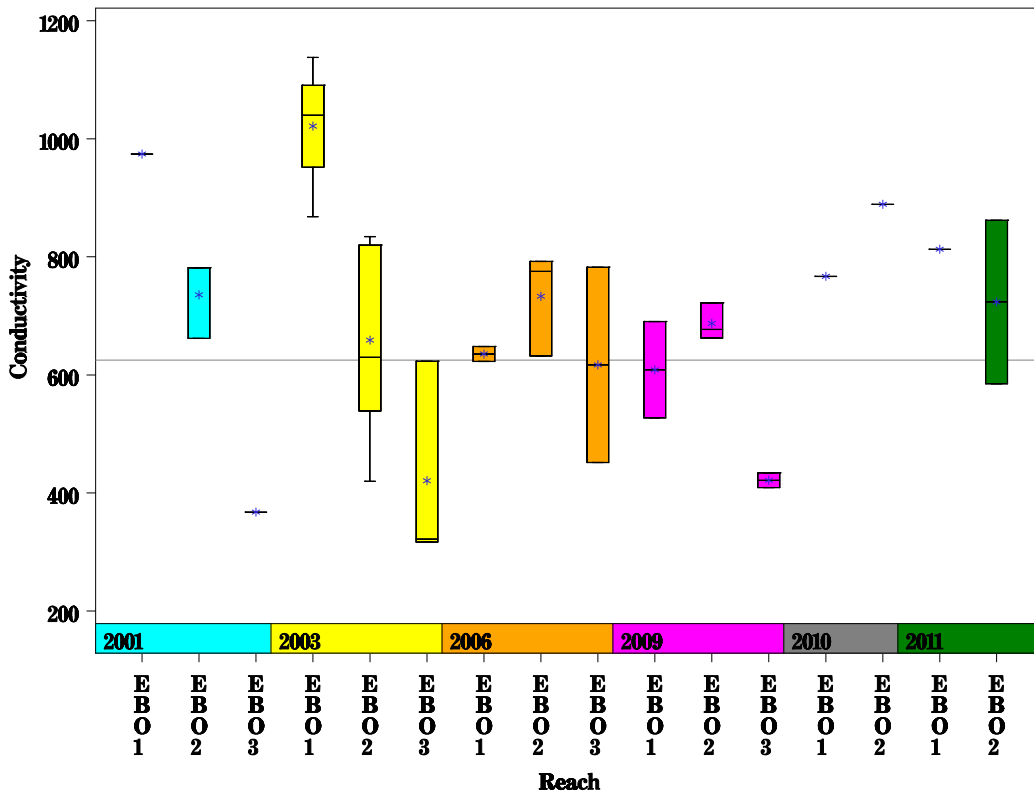
East Bouldin Creek Watershed

Data Summary Graphs – pH and Conductivity (Downstream to Upstream by Year)

Parameter=PH Unit=Standard units Watershed=East Bouldin Creek



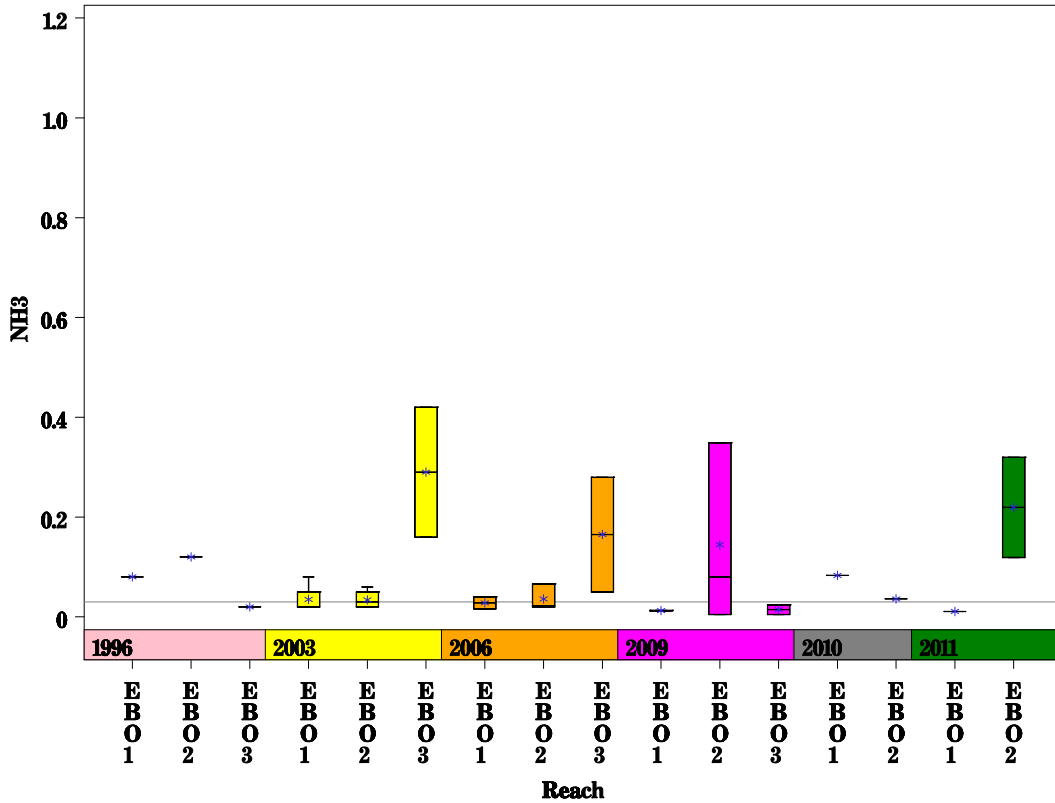
Parameter=CONDUCTIVITY Unit=uS/cm Watershed=East Bouldin Creek



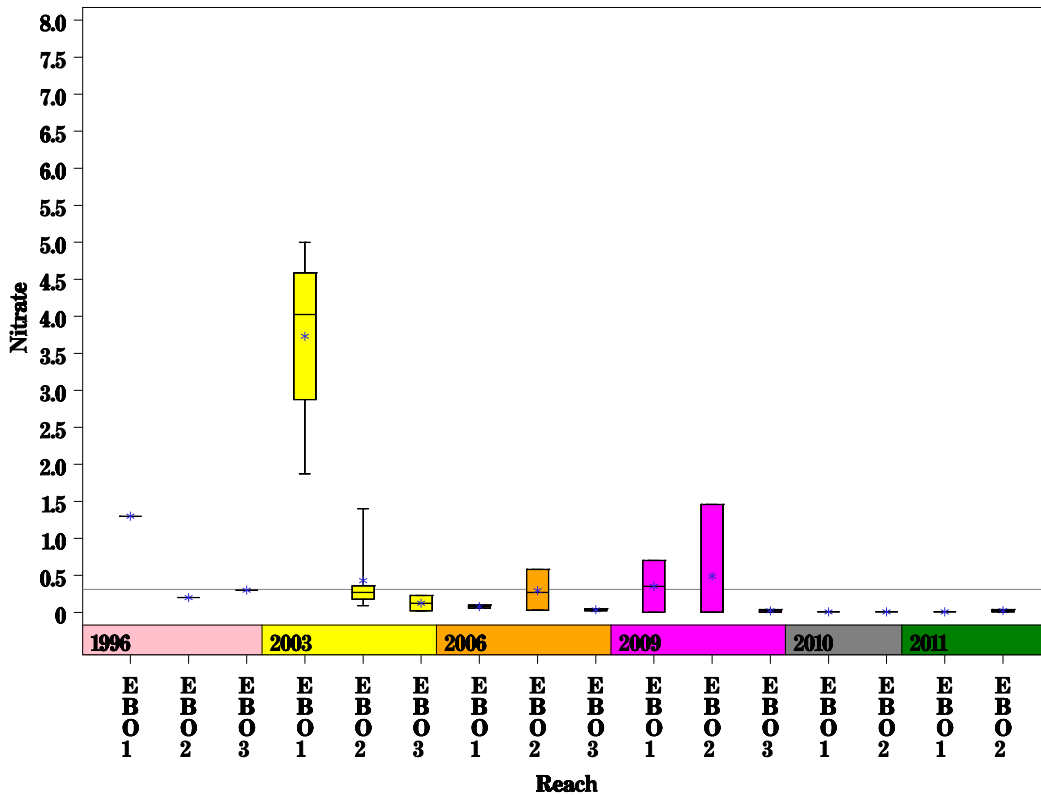
East Bouldin Creek Watershed

Data Summary Graphs – Ammonia and Nitrate/Nitrite (Downstream to Upstream by Year)

Parameter=AMMONIA AS N Unit=MG/L Watershed=East Bouldin Creek



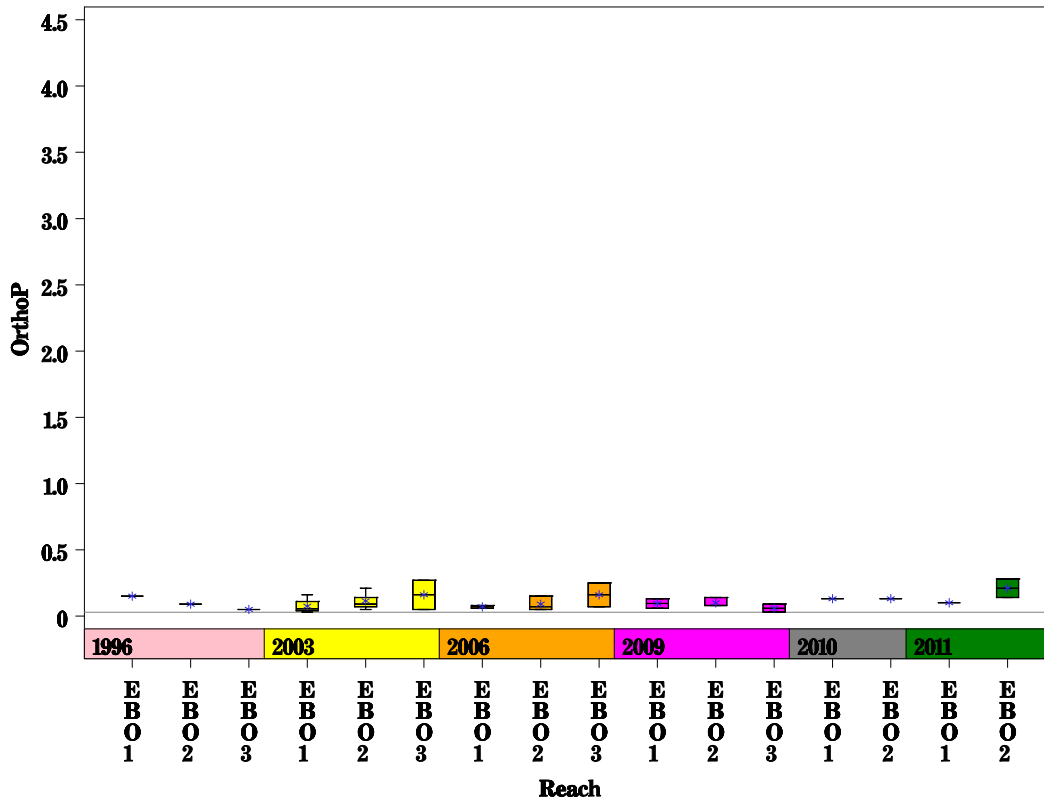
Parameter=NITRATE AS N Unit=MG/L Watershed=East Bouldin Creek



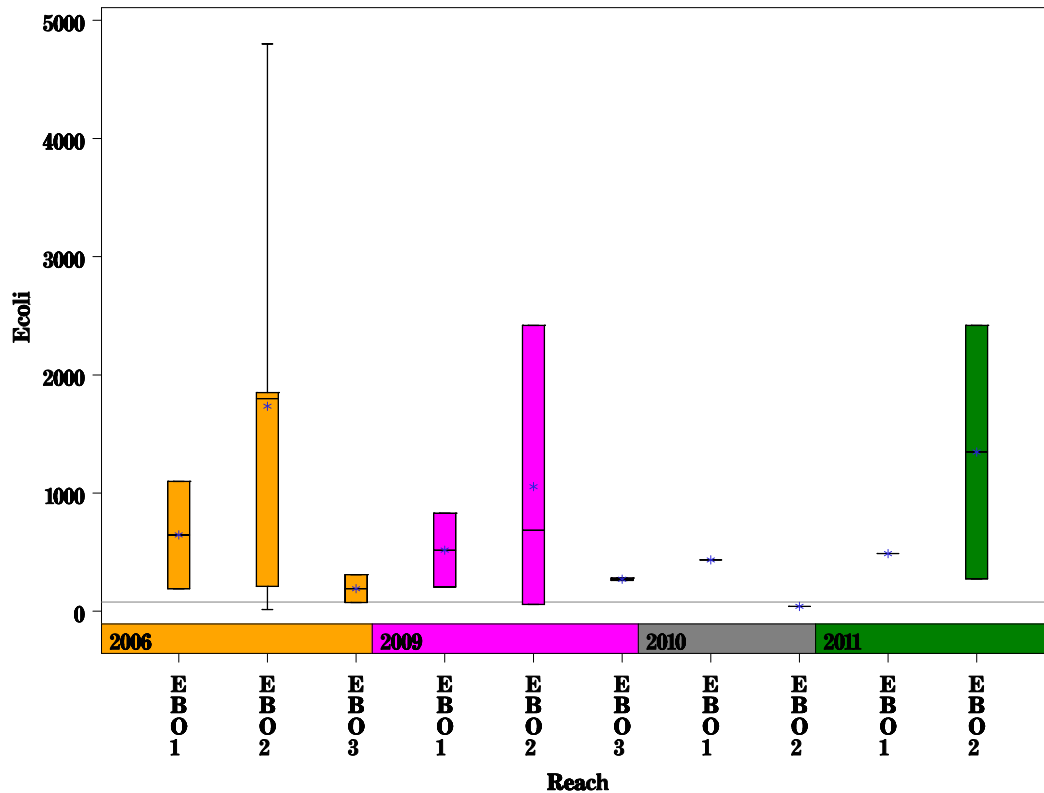
East Bouldin Creek Watershed

Data Summary Graphs – Orthophosphate and E.coli (Downstream to Upstream by Year)

Parameter = ORTHOPHOSPHORUS AS P Unit = MG/L Watershed = East Bouldin Creek



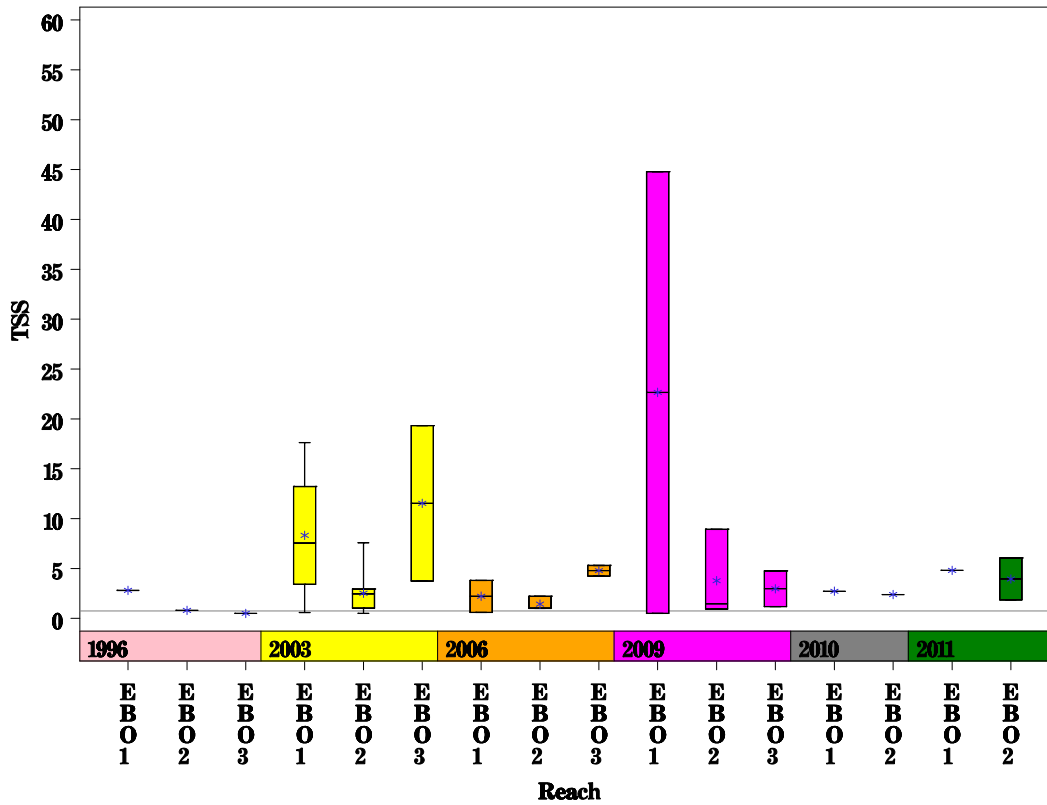
Parameter = E COLI BACTERIA Unit = MPN/100ML Watershed = East Bouldin Creek



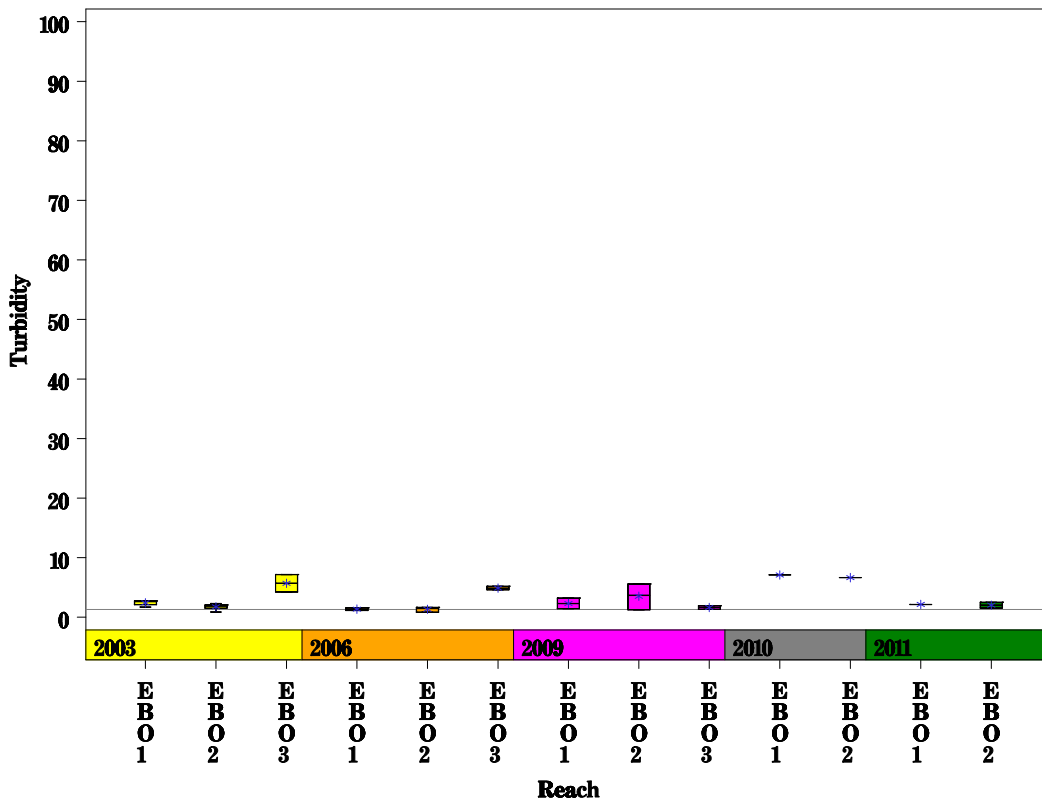
East Bouldin Creek Watershed

Data Summary Graphs – Total Suspended Solids and Turbidity (Downstream to Upstream by Year)

Parameter=TOTAL SUSPENDED SOLIDS Unit=MG/L Watershed=East Bouldin Creek

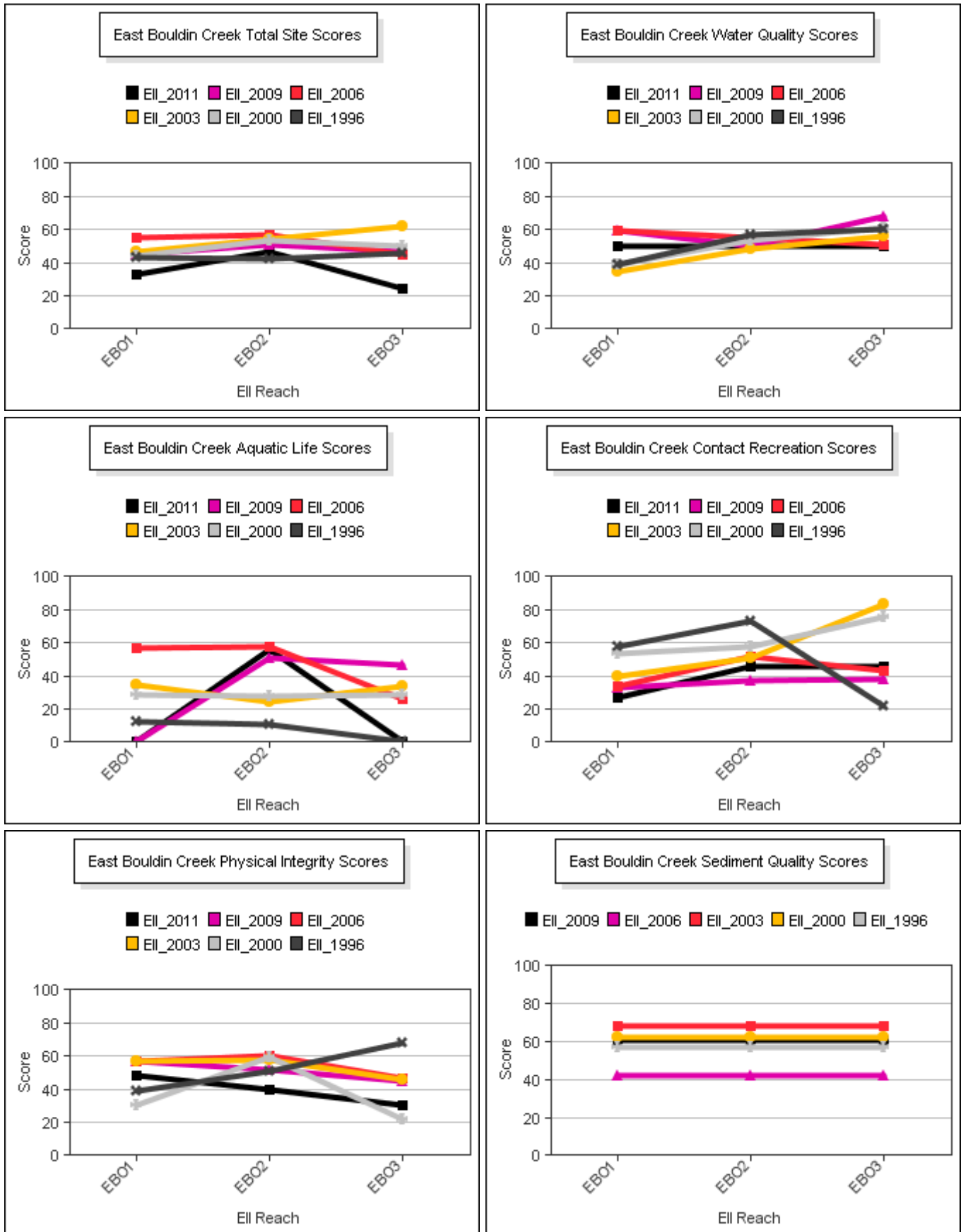


Parameter=TURBIDITY Unit=NTU Watershed=East Bouldin Creek



East Bouldin Creek Watershed

Score Summary – Reach scores for each sample year



East Bouldin Creek Watershed

Site Photographs



115_t00-us-02_13_2001



115_t00-us-03_11_2003



119_t00-us-07_05_2006



119-t00-ds-06-01-2009



120_t00-ds-02_13_2001



120_t00-ur-03_10_2003

East Bouldin Creek Watershed

Site Photographs



120_t00-us-02_13_2001



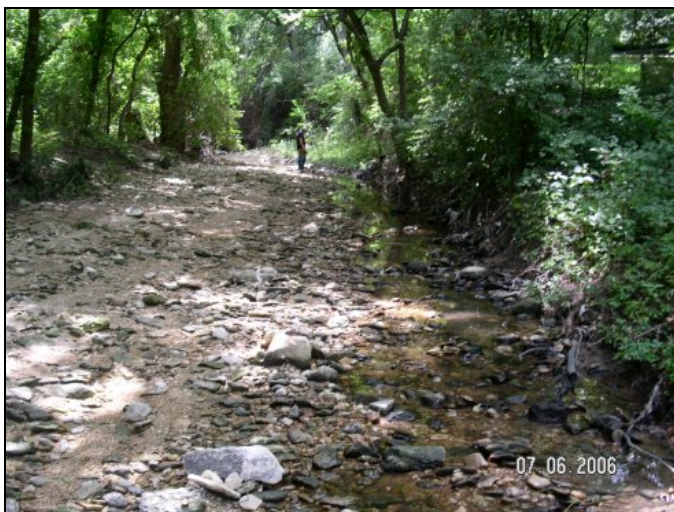
121_t00-ds-02_12_2001



121_t00-us-07_05_2006



121_t00-ds-06_03_2009



1338_t00-us1-07_06_2006



1338_t00-ds-06_03_2009

This page left intentionally blank