

Little Bee Creek Watershed

Summary Sheet

Catchment	Total area	1.2 sq. miles				
	Area in recharge	0.42 sq. miles				
	Creek length	2 miles				
	Receiving water	Town Lake				
Demographics	2000 population	665				
	2030 projected population	2,941				
	30 year projected % increase	342 %				
Land Use	Impervious cover (2003 estimate)	18.08 %				
Overall EII Scores	2001	2004	2007	2010	2012	
	64	47	48	51		

Featured Watershed
 Phase I Watersheds
 Other Phase II Watersheds

Flow Regime* for Sample Sites on Little Bee Creek

Site #	Site Name	2001				2004					2007					2010			
		Mar WQ	Mar Bio	Jun WQ	Sep WQ	Mar WQ	May WQ	Jun WQ	Oct WQ	Dec WQ	Feb WQ	May WQ	Jun Bio	Sep WQ	Dec WQ	Mar WQ	May WQ	May Bio	Oct WQ
272	Laurel Valley	B	B	n	B														
1105	Red Bud Trl	B	B	B	n	B	n	n	n	B	B	n	n	n	n	n	n	n	n

* B = baseflow n = no flow storm = storm flow blue = Samples were taken grey = Samples were not taken blank = not visited

Summary of 2010 Data for Little Bee Creek

Summary	Parameter	Mean	Max	Min	Discussion
Physicochemical	D.O. mg/l				No WQ data in 2012 (Little Bee watershed was dropped from EII sampling due to inadequate baseflow)
	pH st.units				
	Cond uS/cm				
Nutrients	NH ₃ mg/l				
	NO ₃ mg/l				
	Ortho P mg/l				
Sediment Load	TSS mg/l				
	Turbidity ntu				
Biology	E.Coli /100ml				
	Benthic Macs				
	Diatom				

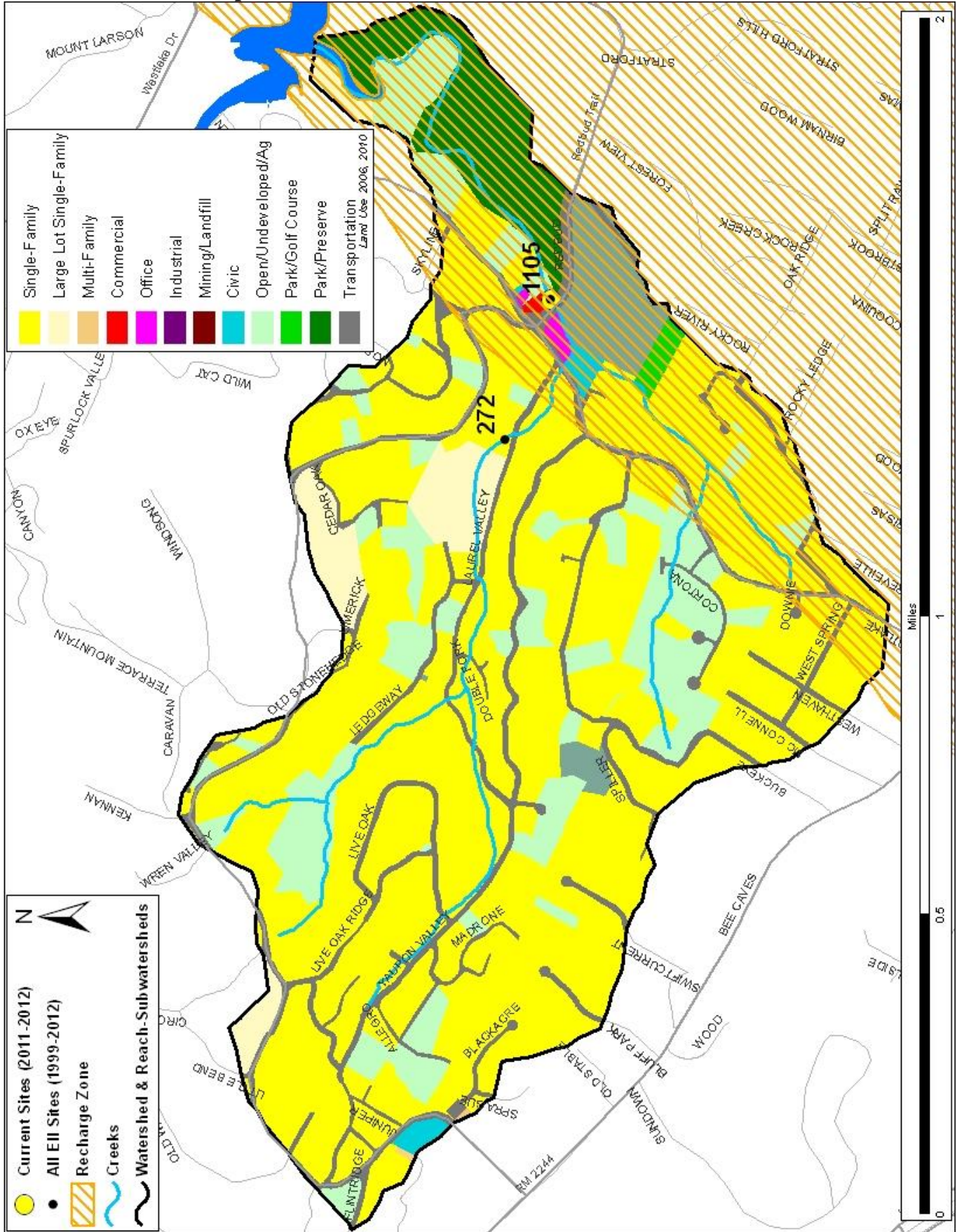
Index scores* for Little Bee Creek by Year

Reach	Site	Site Name	Year	Water Quality	Sediment**	Contact Rec.	Non-Contact Rec.	Physical Integrity	Aquatic Life	Benthic subindex	Diatom subindex	Total EII Score
LBE1	272	Little Bee Creek @ Laurel Valley Rd (LVT)	1998	54	93	88	72	55	34	28	40	66
LBE1	1105	Little Bee Creek @ Red Bud Trail	1998	46	93	95	53	53				57
LBE1	272	Little Bee Creek @ Laurel Valley Rd (LVT)	2001	48	70	73	80	70	56	43	68	64
LBE1	1105	Little Bee Creek @ Red Bud Trail	2001	44	70	84	88	46	41	31	51	61
LBE1	1105	Little Bee Creek @ Red Bud Trail	2004	47	73	58	45	61				47
LBE1	1105	Little Bee Creek @ Red Bud Trail	2007	36	75	71	53	53				48
LBE1	1105	Little Bee Creek @ Red Bud Trail	2010		53		88	63				51

* blank cells indicate parameter was not collected, blank row indicate site was dropped **sediment samples only collected at the downstream site
 100-87.5 Excellent 87.5-75 V. Good 75-62.5 Good 62.5-50 Fair 50-37.5 Marginal 37.5-25 Poor 25-12.5 Bad 12.5-0 V. Bad

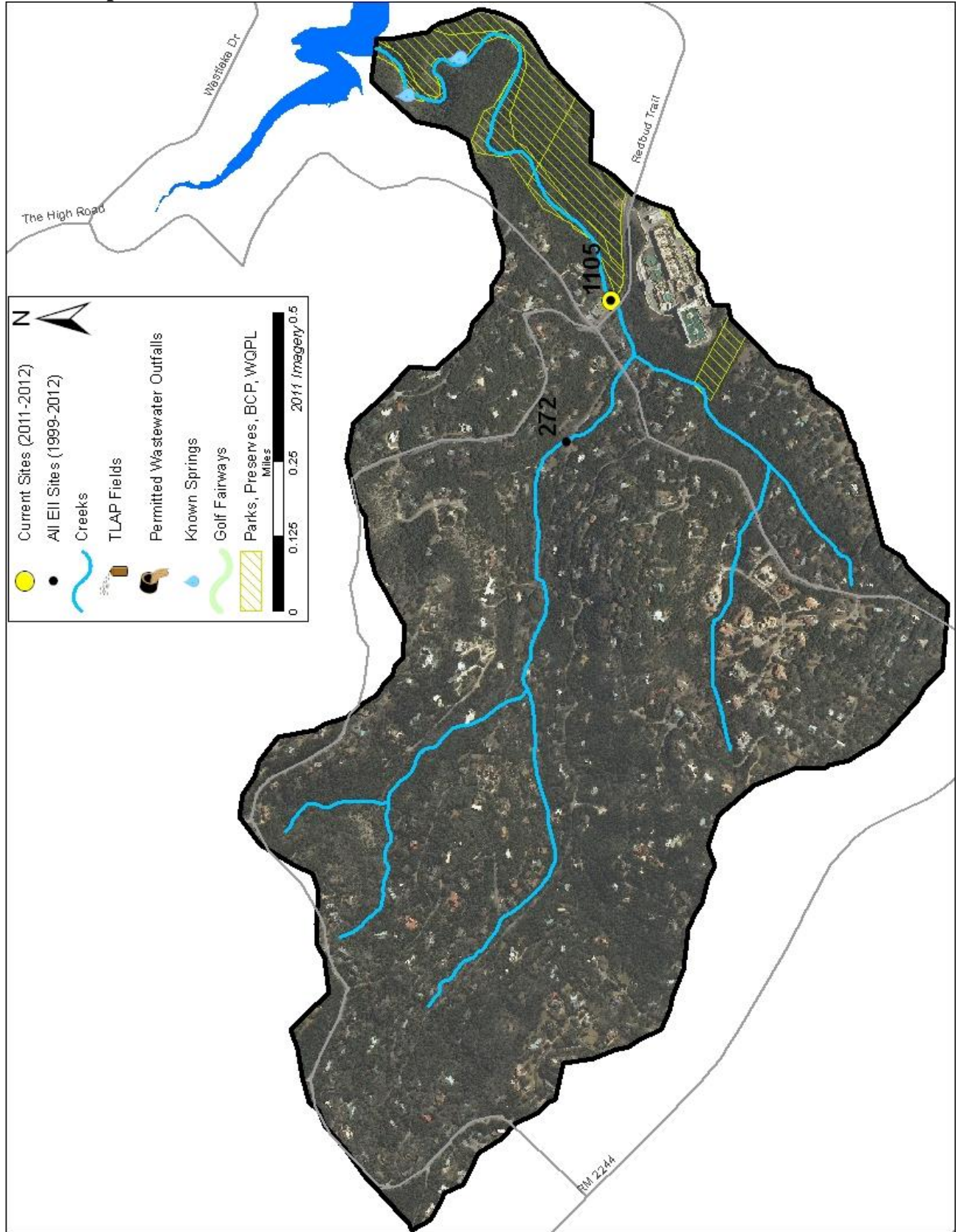
Little Bee Creek Watershed

Land Use Map



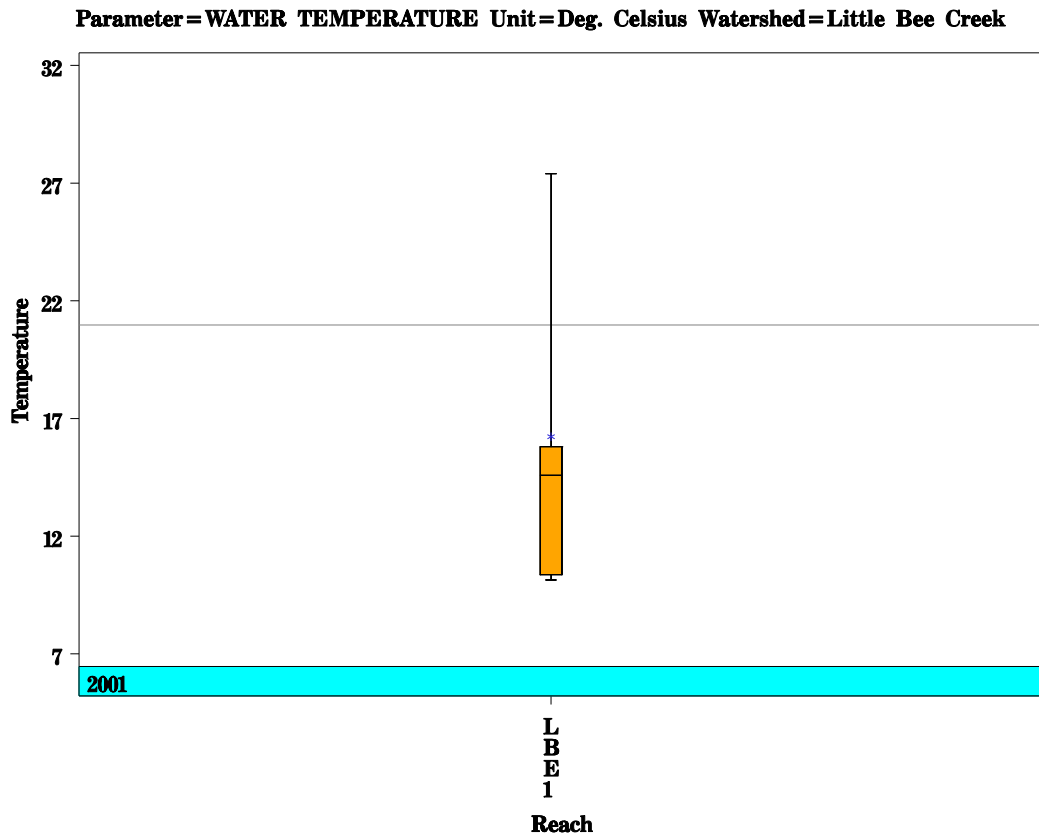
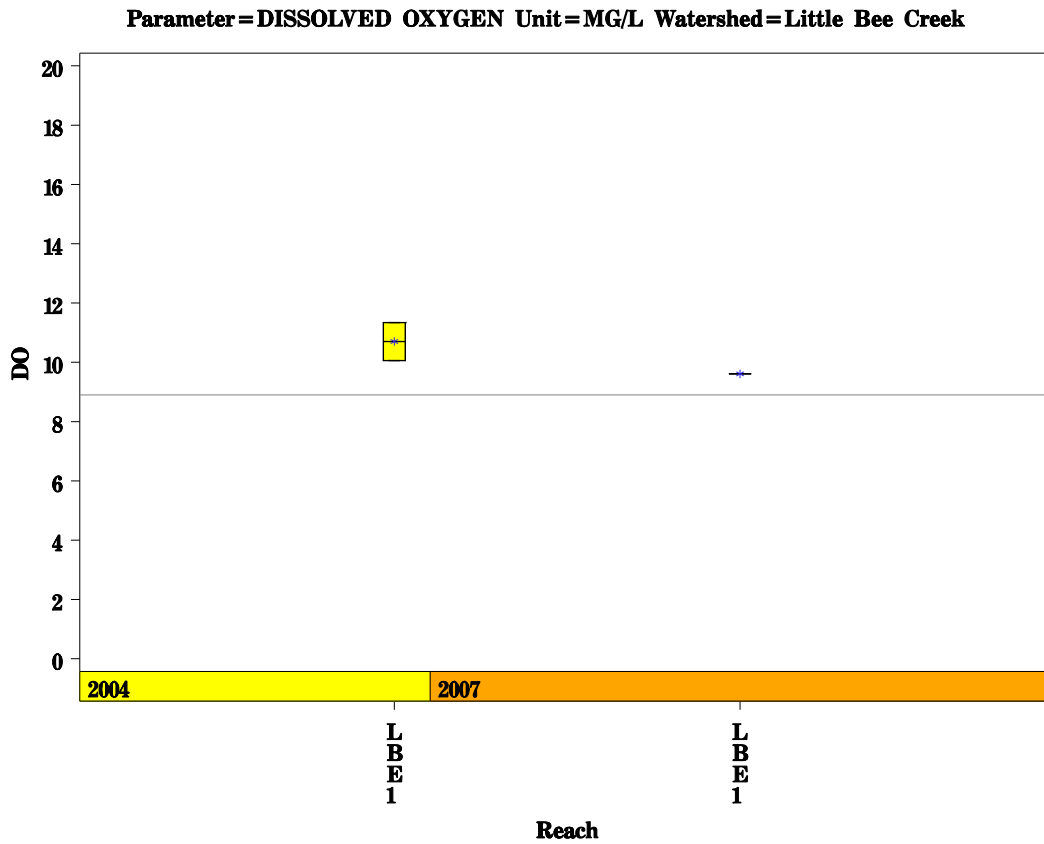
Little Bee Creek Watershed

Aerial Map



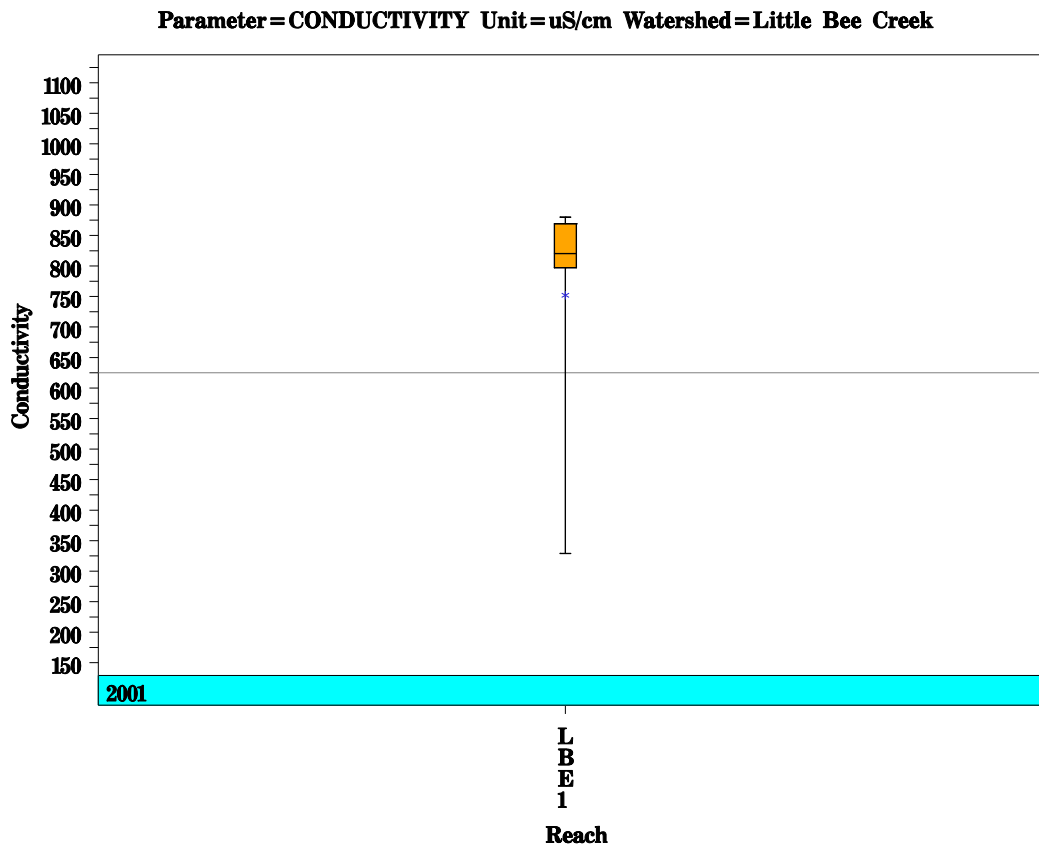
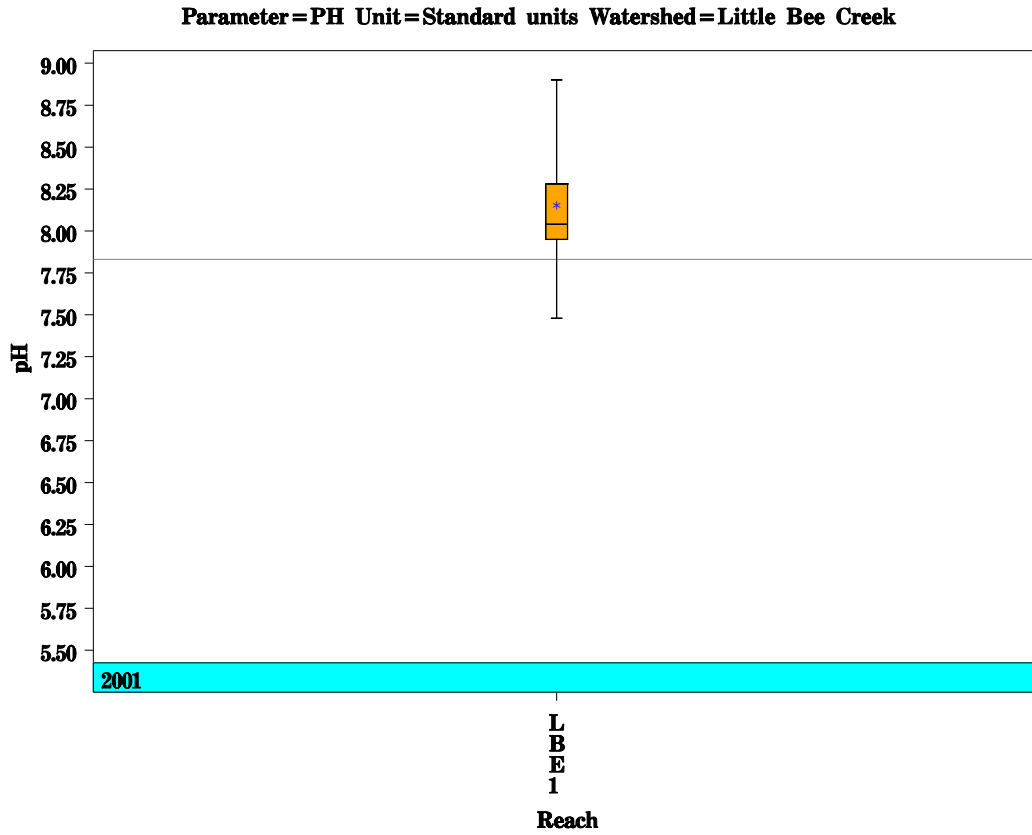
Little Bee Creek Watershed

Data Summary Graphs – Dissolved Oxygen and Temperature (Downstream to Upstream by Year)



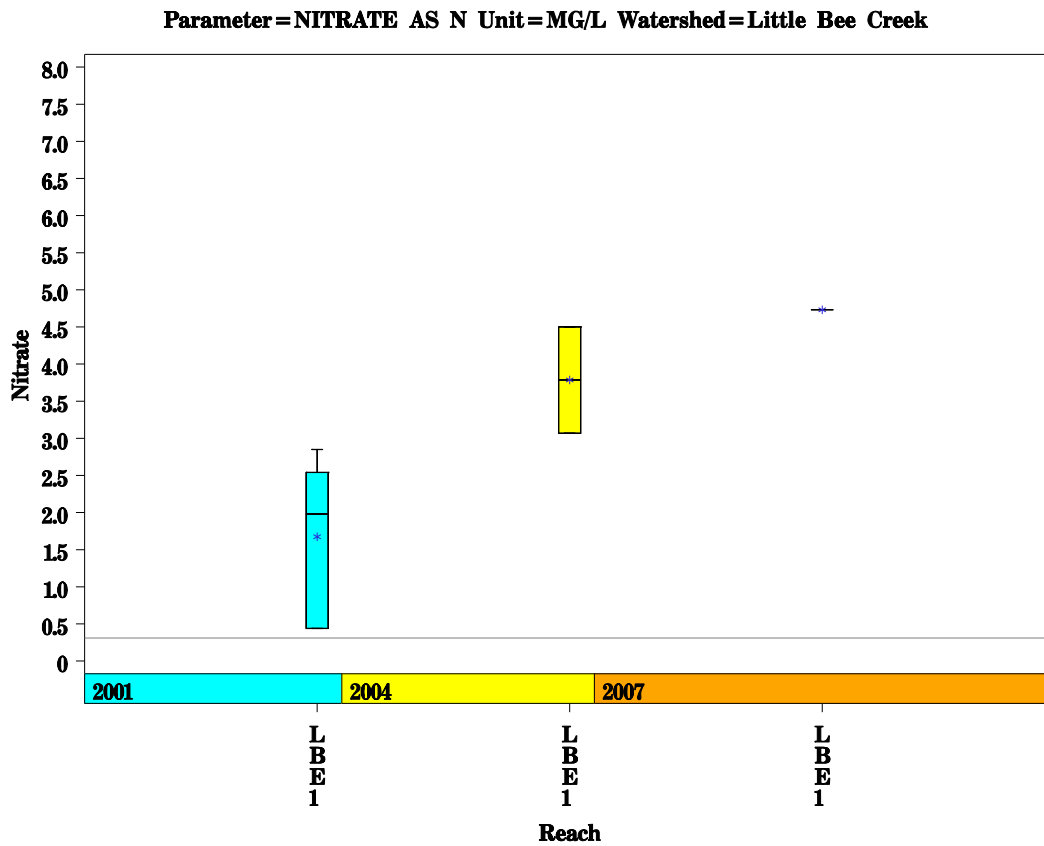
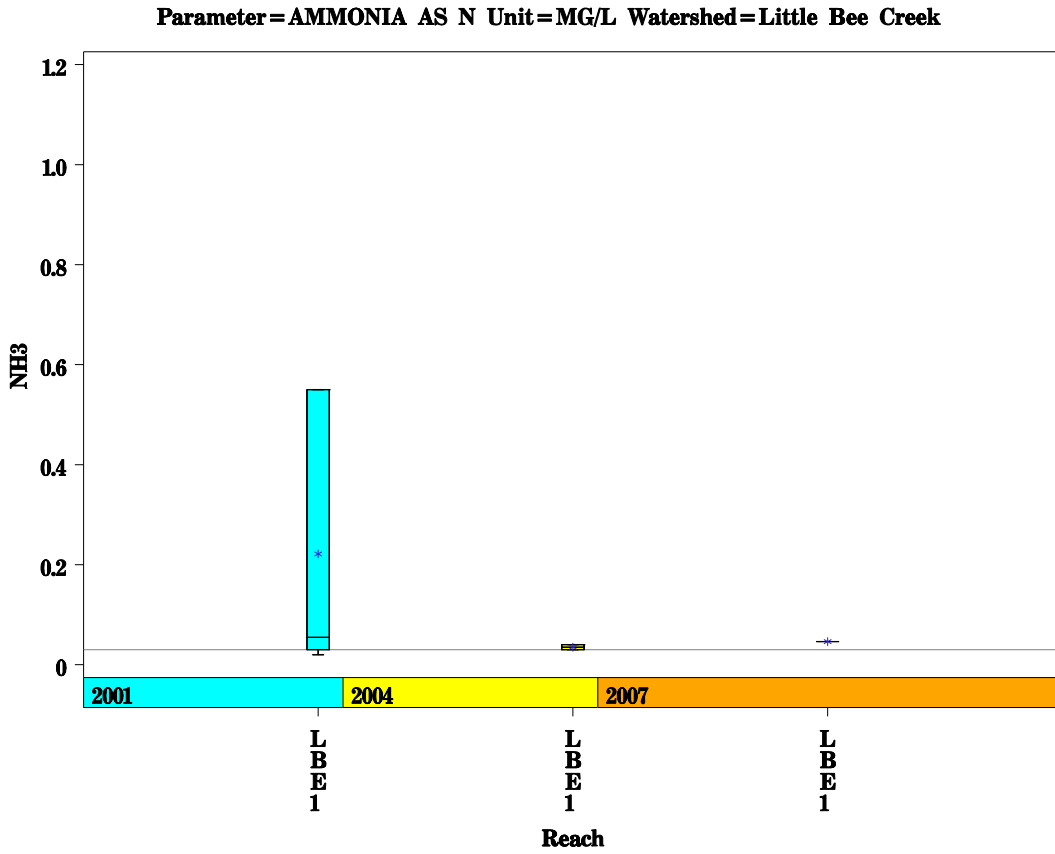
Little Bee Creek Watershed

Data Summary Graphs – pH and Conductivity (Downstream to Upstream by Year)



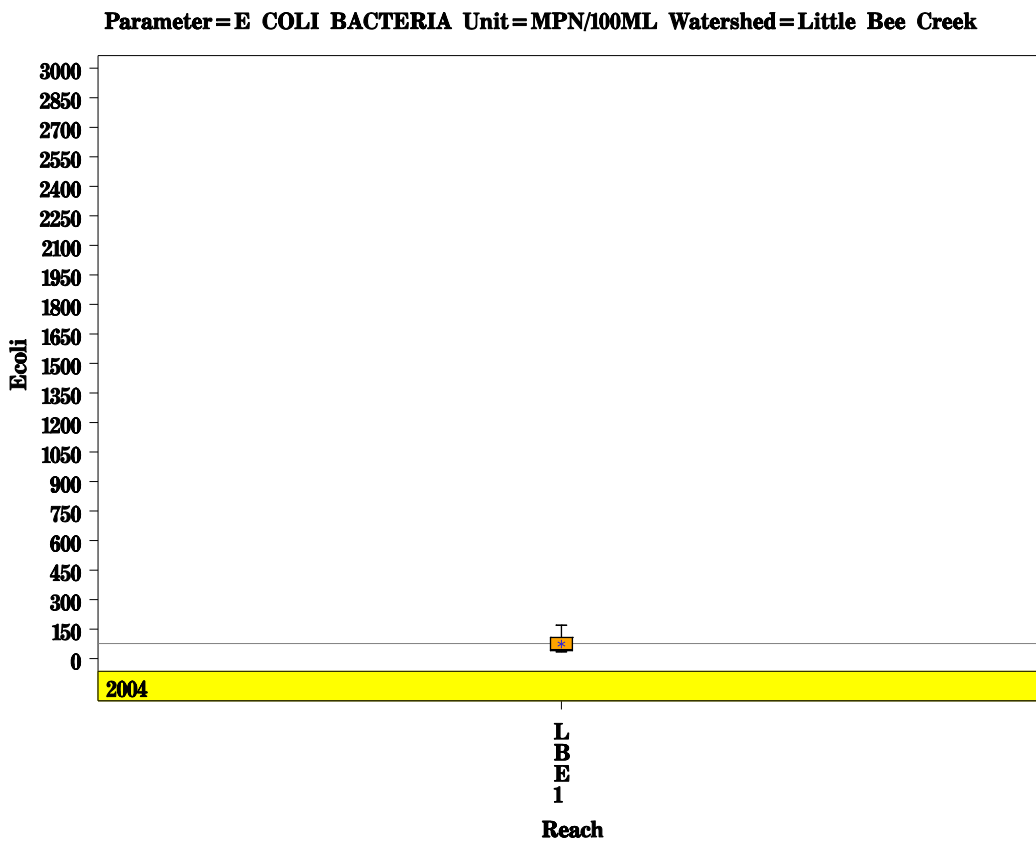
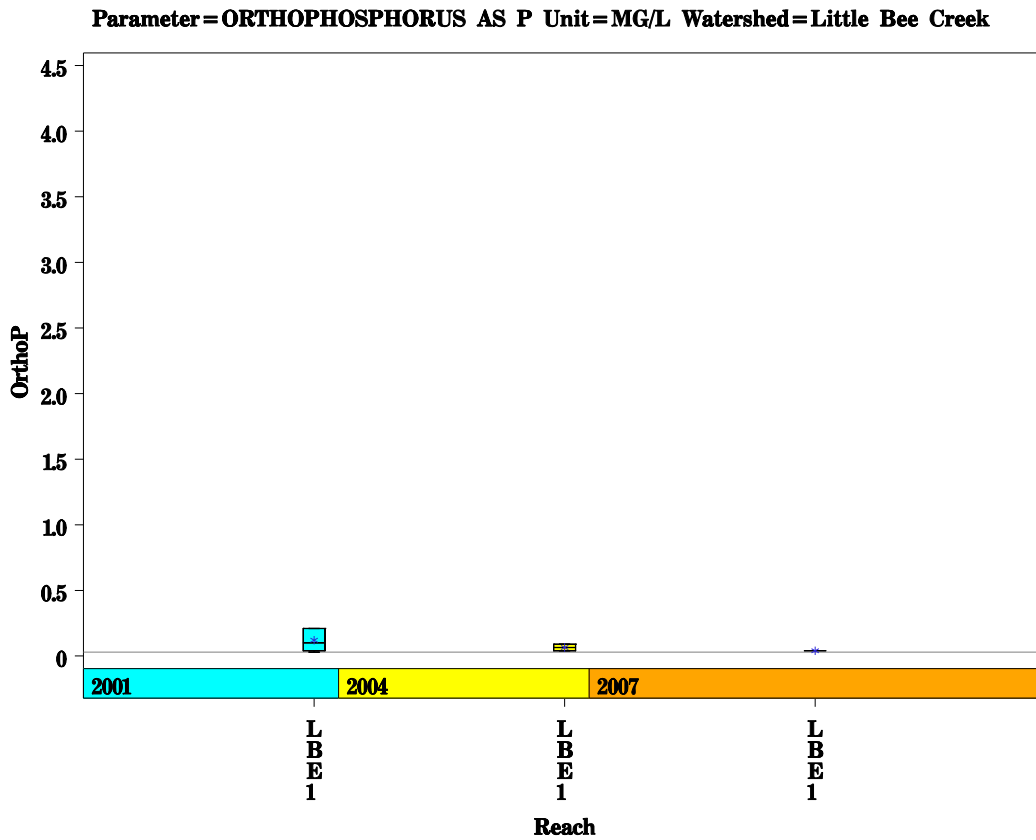
Little Bee Creek Watershed

Data Summary Graphs – Ammonia and Nitrate/Nitrite (Downstream to Upstream by Year)



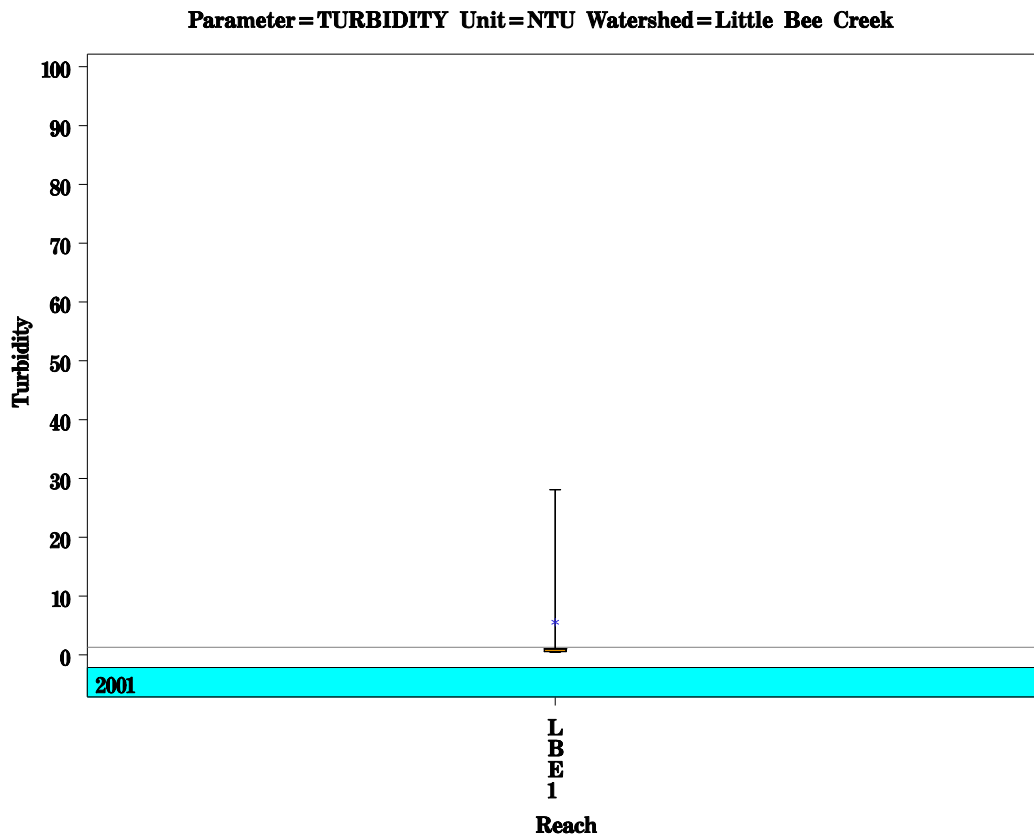
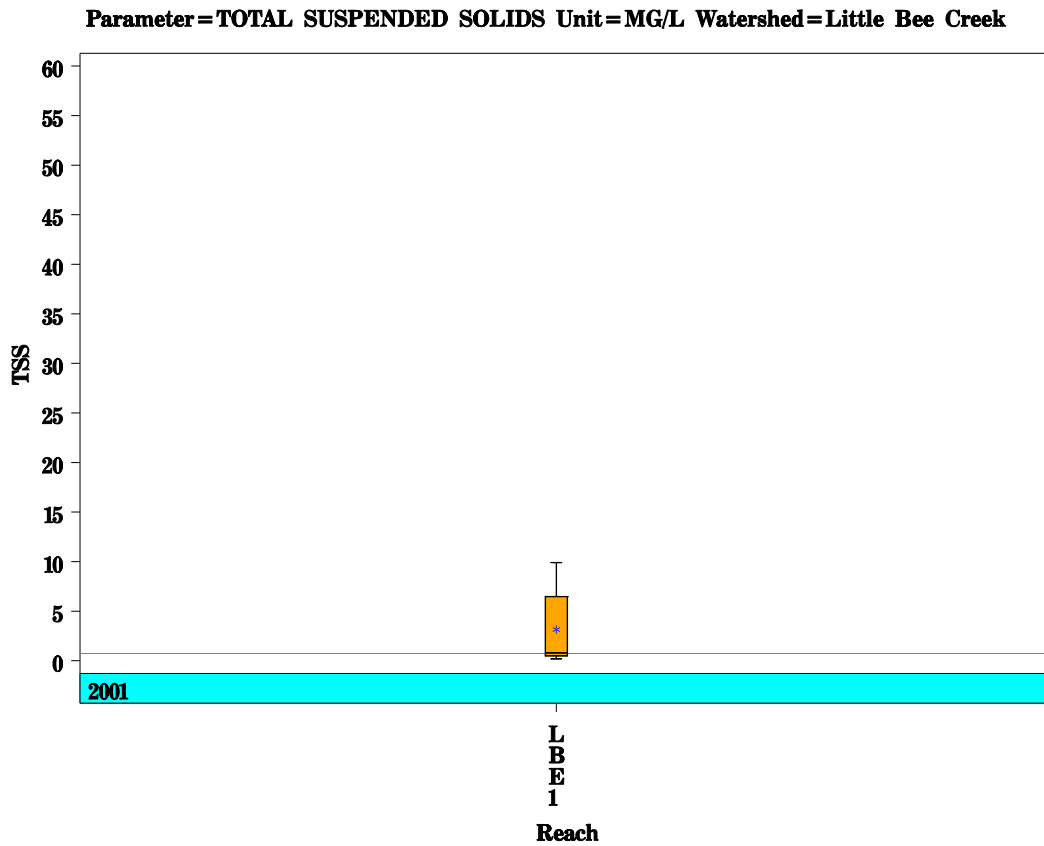
Little Bee Creek Watershed

Data Summary Graphs – Orthophosphate and E.coli (Downstream to Upstream by Year)



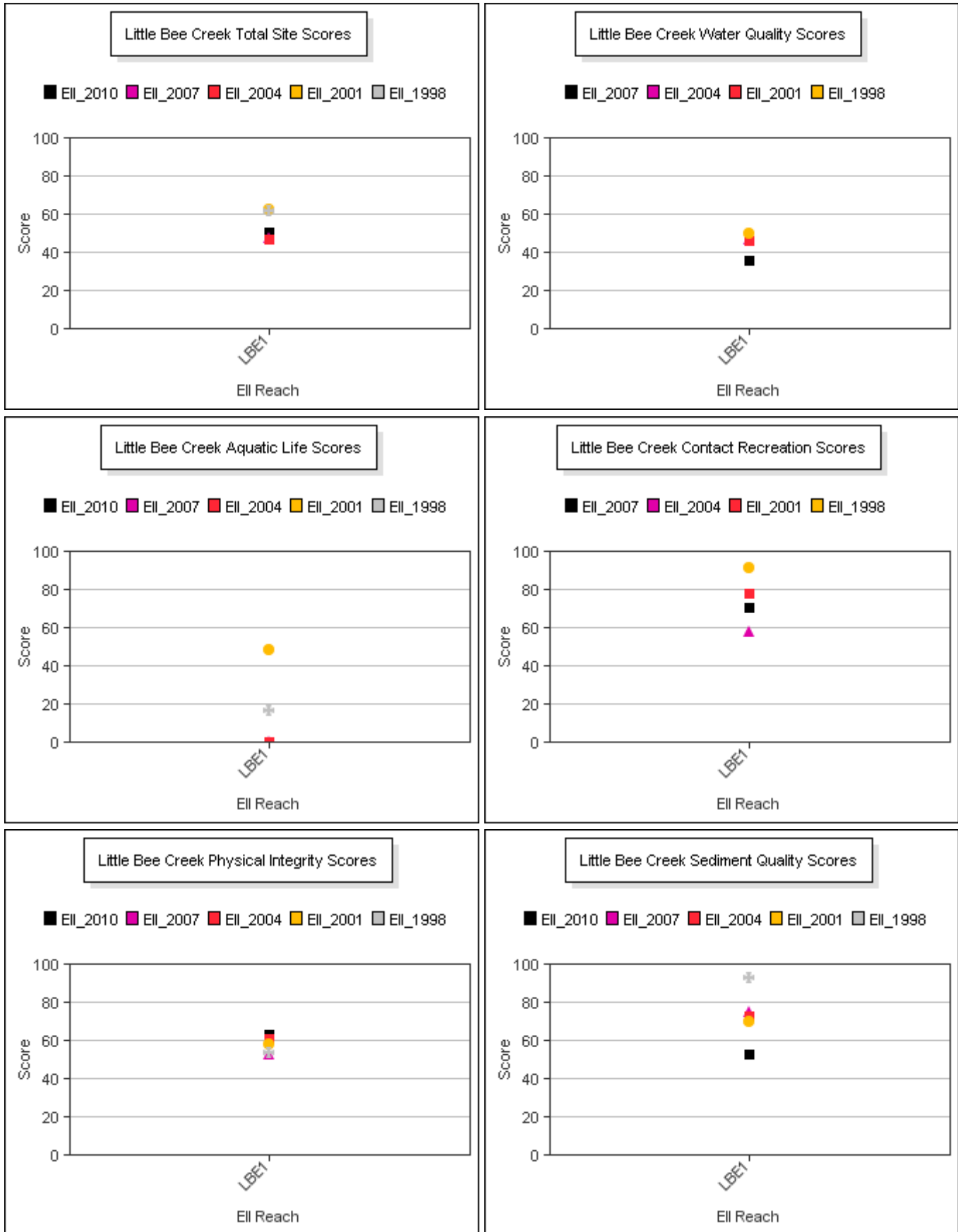
Little Bee Creek Watershed

Data Summary Graphs – Total Suspended Solids and Turbidity (Downstream to Upstream by Year)



Little Bee Creek Watershed

Score Summary – Reach scores for each sample year



Little Bee Creek Watershed

Site Photographs



1105_us_06_18_2007



1105_ur_06_18_2007



1105_ds_06_18_2007

Little Bee Creek Watershed

Site Photographs



1105_00-us-05_17_2010



1105_00-ur-05_17_2010



1105-dt-03_04_2010

This page left intentionally blank