

North Fork Dry Creek Watershed

Summary Sheet

Catchment	Total area	4 sq. miles				
	Area in recharge	0				
	Creek length	9 miles				
	Receiving water	Dry Creek				
Demographics	2000 population	590				
	2030 projected population	3,058				
	30 year projected % increase	418 %				
Land Use	Impervious cover (2003 estimate)	6.49 %				
Overall EII Scores	1999	2002	2005	2008	2010	2012
	54	62	44	54	61	73

Featured Watershed
 Phase I Watersheds
 Other Phase II Watersheds

Flow Regime* for Sample Sites on North Fork Dry Creek

Site #	Site Name	2002					2005					2008					2010				2011	2012	
		Feb	Feb	May	Aug	Nov	Mar	Jun	Jun	Sep	Dec	Feb	May	Jun	Sep	Dec	Mar	May	May	Oct	Dec	Mar	May
		WQ	Bio	WQ	WQ	WQ	WQ	WQ	Bio	WQ	WQ	WQ	WQ	Bio	WQ	WQ	WQ	WQ	Bio	WQ	WQ	WQ	Bio
1217	FM 812	B	B	n	n	B	B	n	n	n	n	B	n	n	n	n	B	B	B	n	n	B	n
1218	US183	B		n	n	B																	

* B = baseflow n = no flow storm = storm flow blue = Samples were taken grey = Samples were not taken blank = not visited

Summary of 2012 Data for North Fork Creek

Summary	Parameter	Mean	Max	Min	Discussion
Physicochemical	D.O. mg/l	8.4	8.4	8.4	Within normal range.
	pH st.units	8.27	8.27	8.27	High value at site 1217.
	Cond uS/cm	680	680	680	Within normal range.
Nutrients	NH ₃ mg/l	0.018	0.018	0.018	Within normal range.
	NO ₃ mg/l	0.008	0.008	0.008	Generally low.
	Ortho P mg/l	0.004	0.004	0.004	Generally low.
Sediment Load	TSS mg/l	12.6	12.6	12.6	High value at site 1217.
	Turbidity ntu	-	-	-	Only measurement rejected
Biology	E.Coli /100ml	4	4	4	Generally low.
	Benthic Macroinvertebrates and Diatoms: evaluations are provided in the introduction of this report				

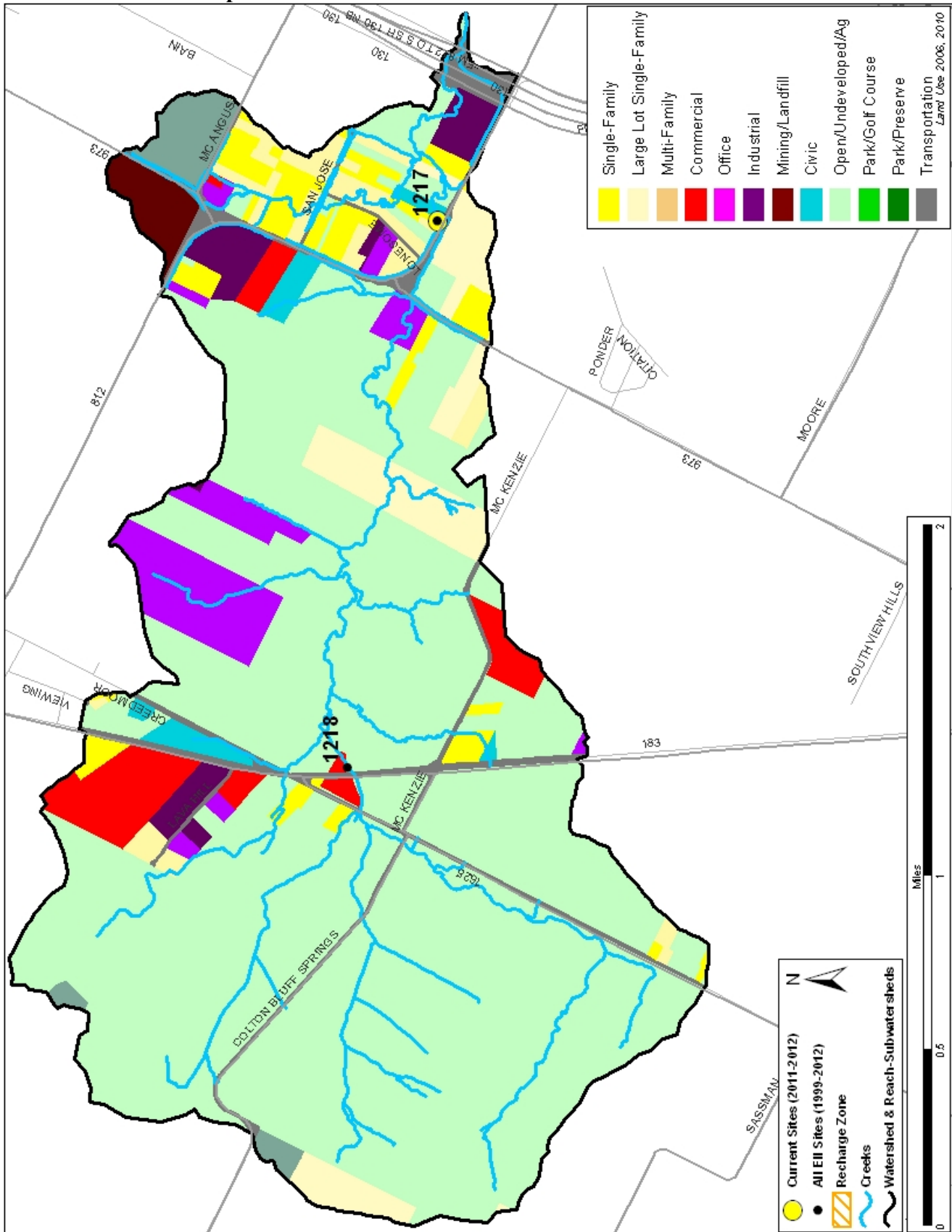
Index Scores* for North Fork Dry Creek Sites by Year

Reach	Site	Site Name	Year	Water Quality	Sediment**	Contact Rec.	Non-Contact Rec.	Physical Integrity	Aquatic Life	Benthic subindex	Diatom subindex	Total EII Score
NFD1	1217	North Fork Dry Creek @ FM812	1999	54	77	97	58	43				55
NFD1	1218	North Fork Dry Creek @ US183	1999	55	77	86	51	40				52
NFD1	1217	North Fork Dry Creek @ FM812	2002	58	83	99	77	52	48	36	60	70
NFD1	1218	North Fork Dry Creek @ US183	2002	48	83	85	65	41				54
NFD1	1217	North Fork Dry Creek @ FM812	2005	57	81	35	56	42				44
NFD1	1217	North Fork Dry Creek @ FM812	2008	58	79	51	43	35	60	60		54
NFD1	1217	North Fork Dry Creek @ FM812	2010	59	80	71	70	47	41	33	49	61
NFD1	1217	North Fork Dry Creek @ FM812	2012	74	83	98	54	48	79	77	80	73

* blank cells indicate parameter was not collected, blank row indicate site was dropped **sediment samples only collected at the downstream site
 100-87.5 Excellent 87.5-75 V. Good 75-62.5 Good 62.5-50 Fair 50-37.5 Marginal 37.5-25 Poor 25-12.5 Bad 12.5-0 V. Bad

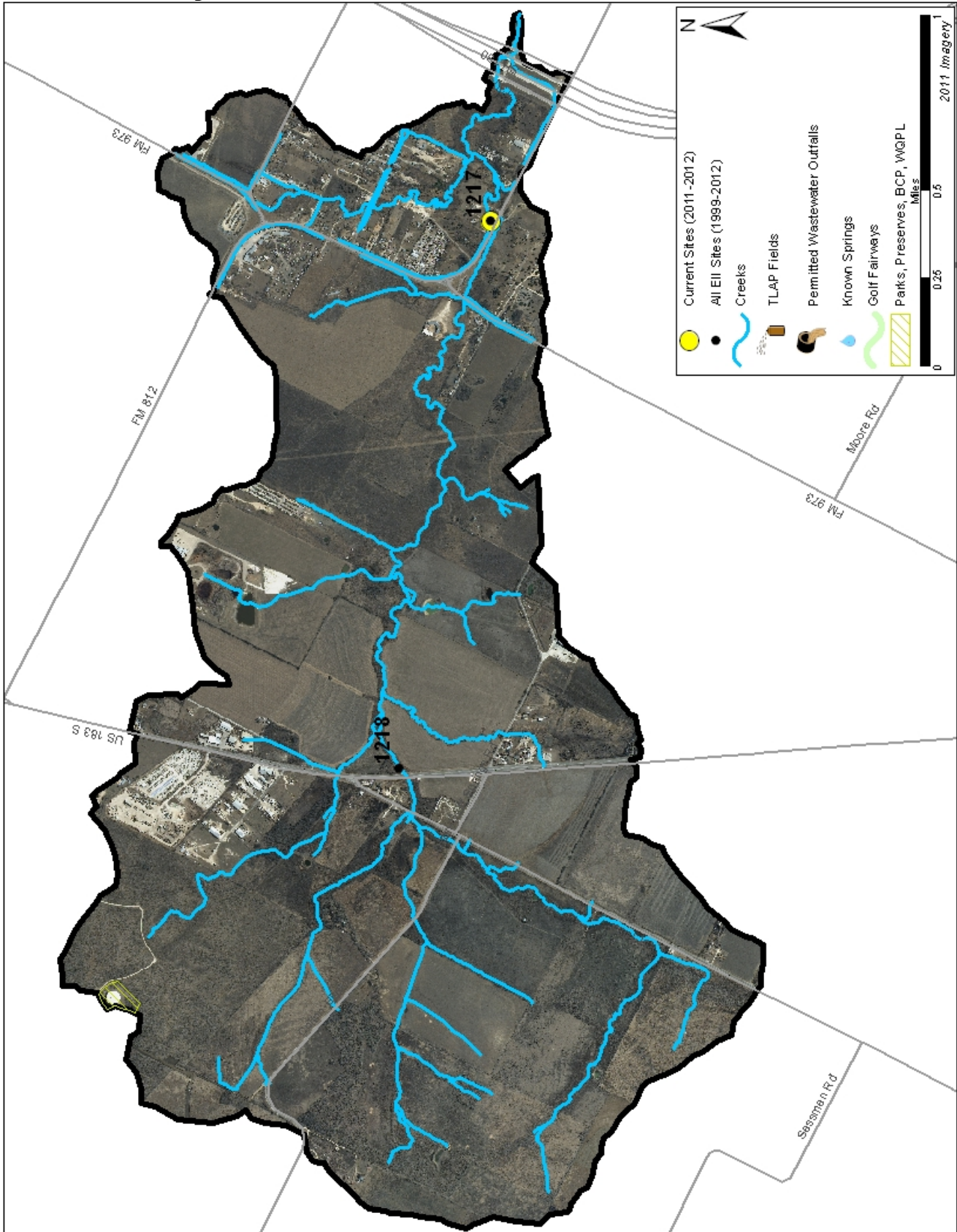
North Fork Dry Creek Watershed

Land Use Map



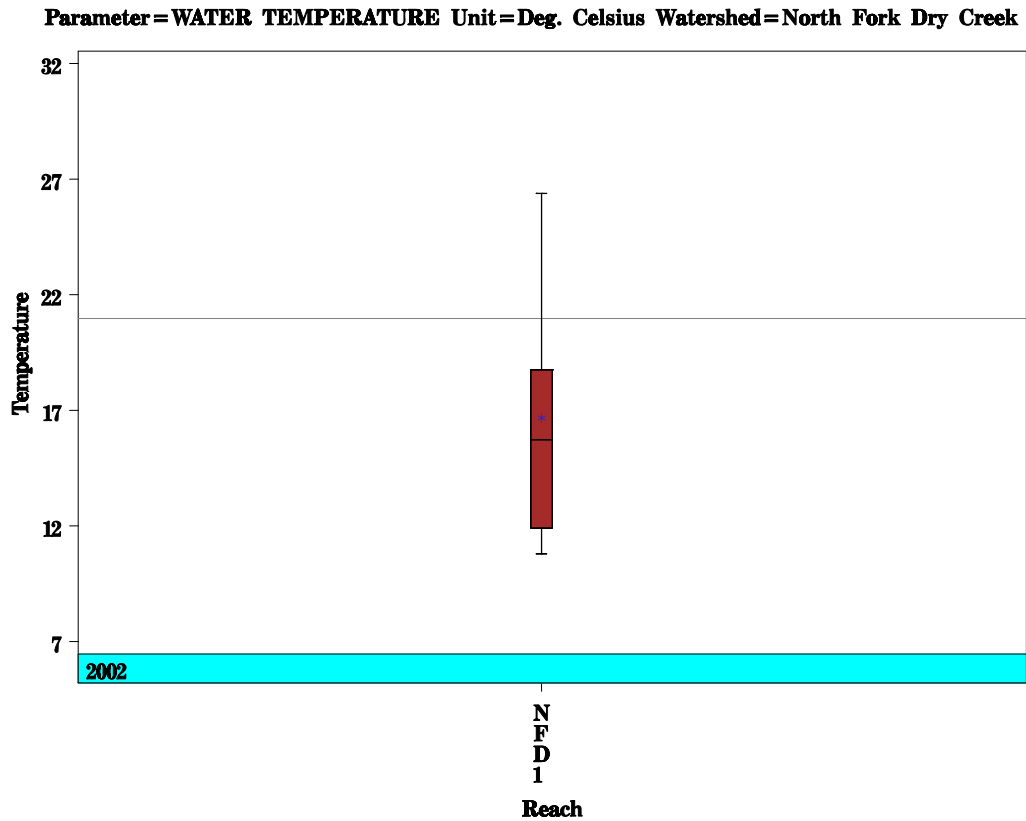
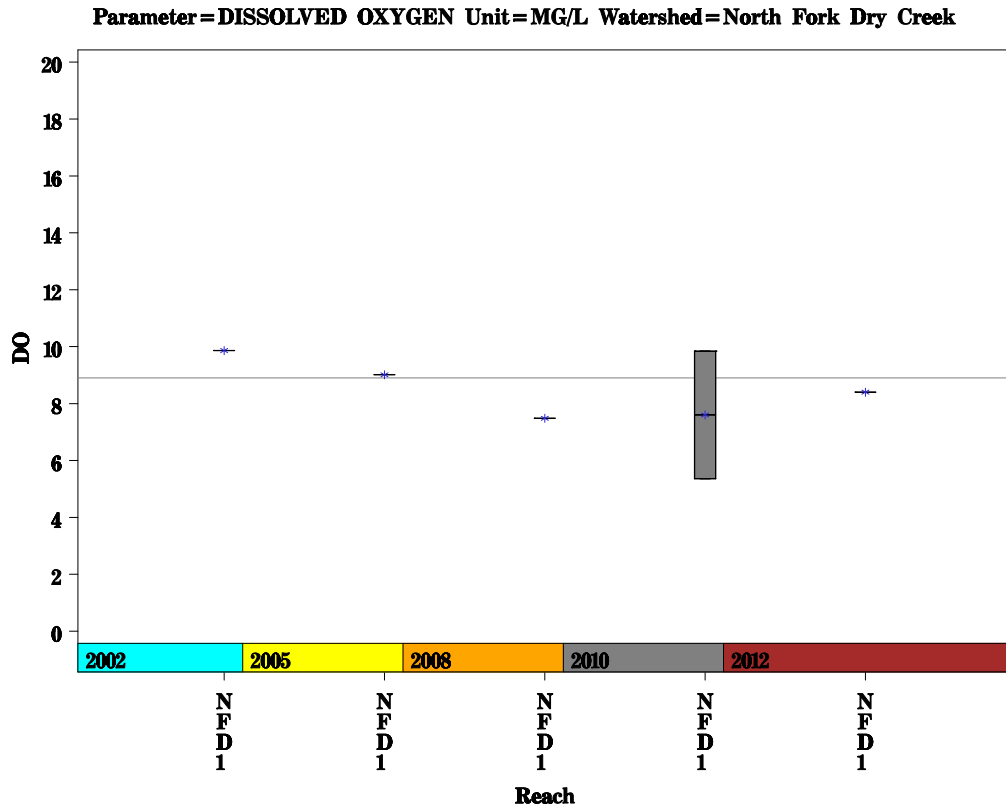
North Fork Dry Creek Watershed

Aerial Map



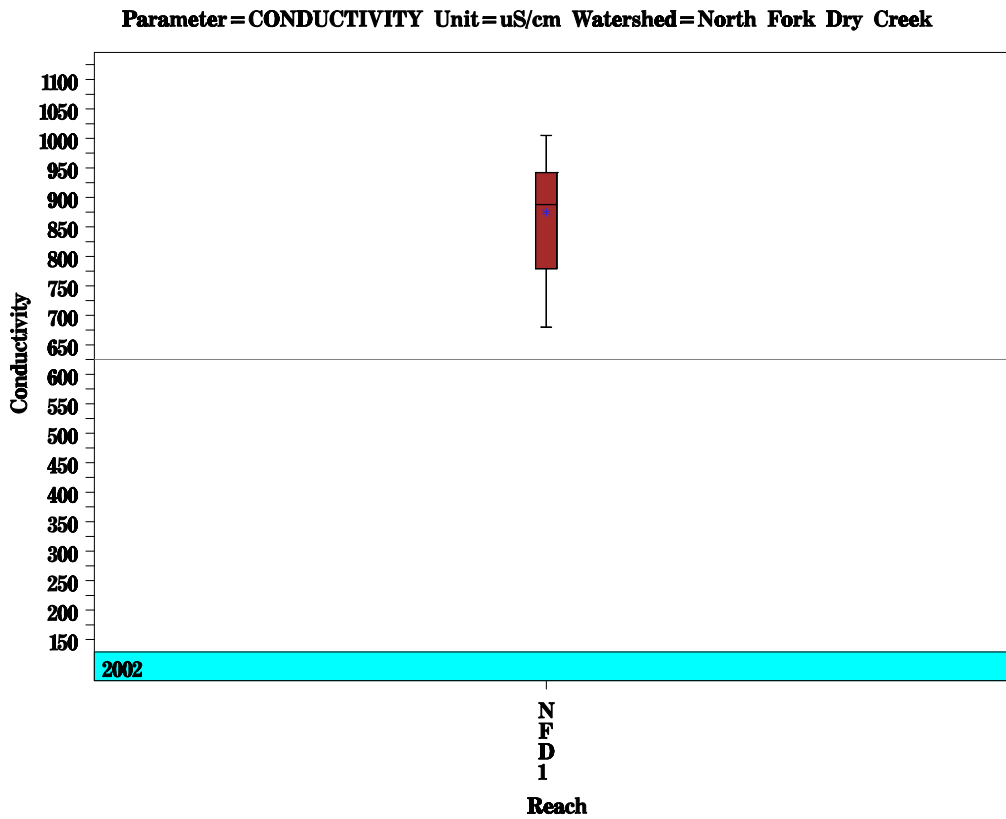
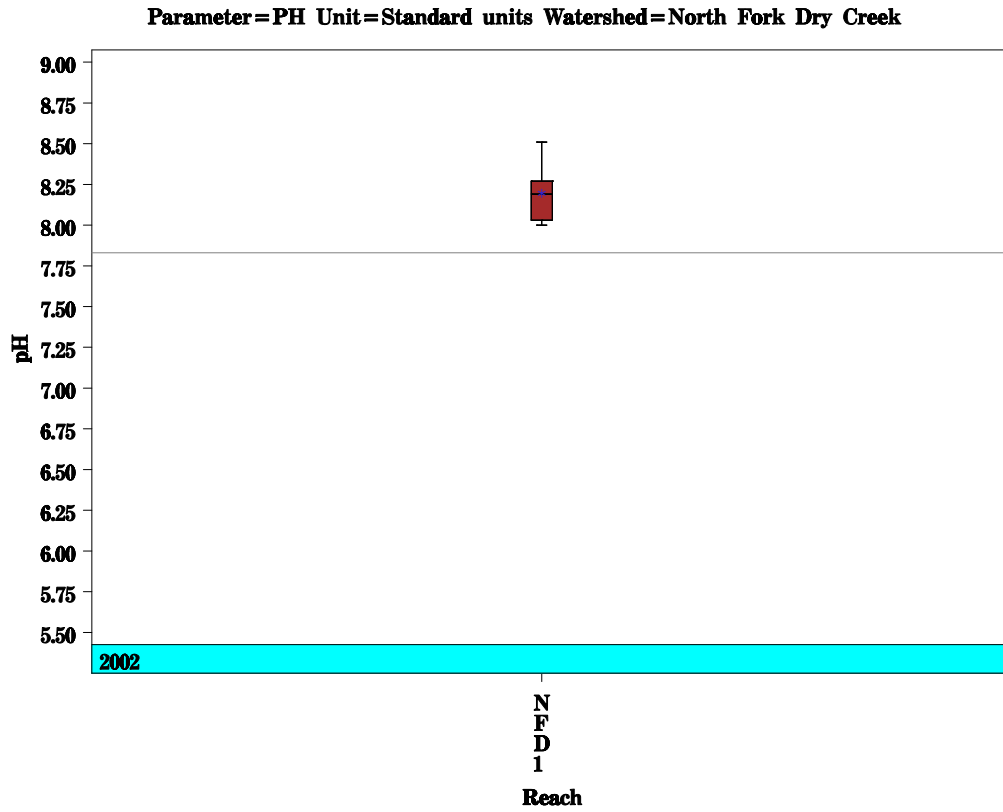
North Fork Dry Creek Watershed

Data Summary Graphs – Dissolved Oxygen and Temperature (Downstream to Upstream by Year)



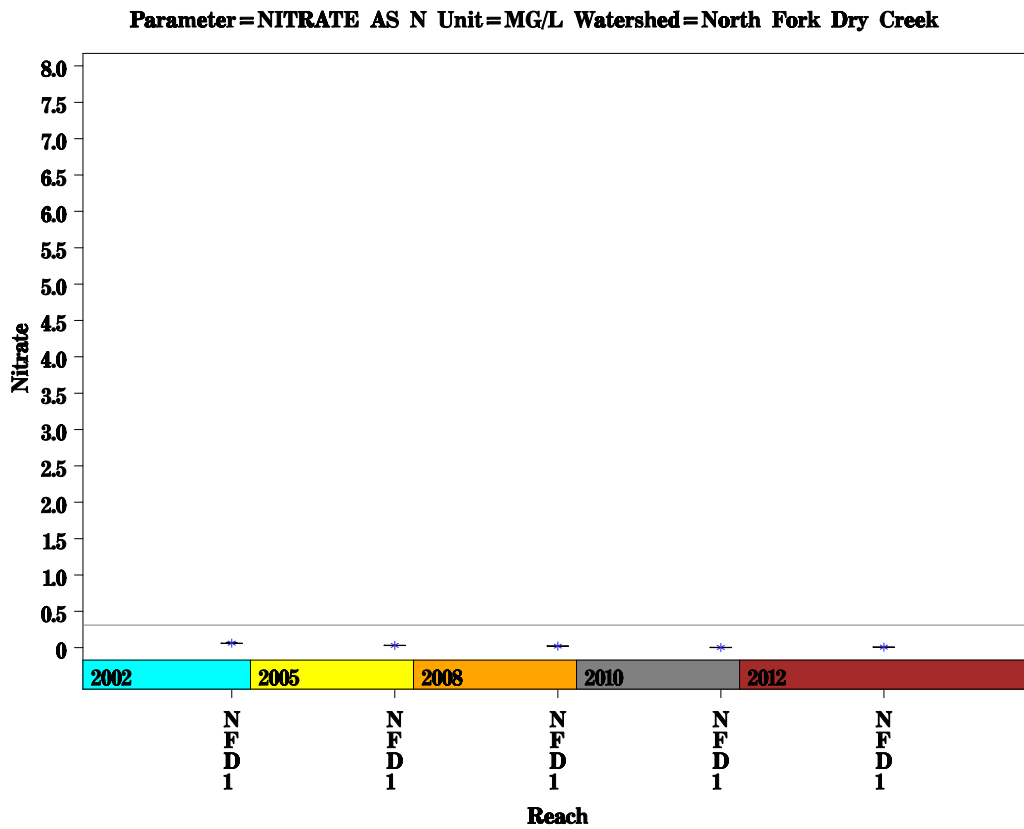
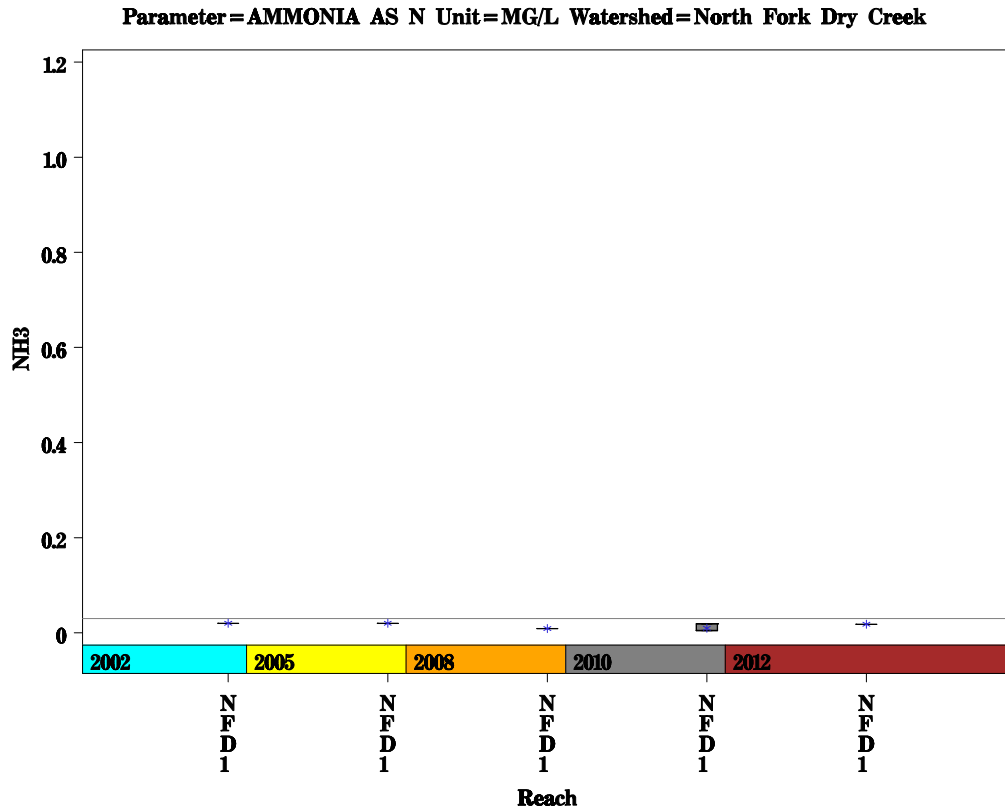
North Fork Dry Creek Watershed

Data Summary Graphs – pH and Conductivity (Downstream to Upstream by Year)



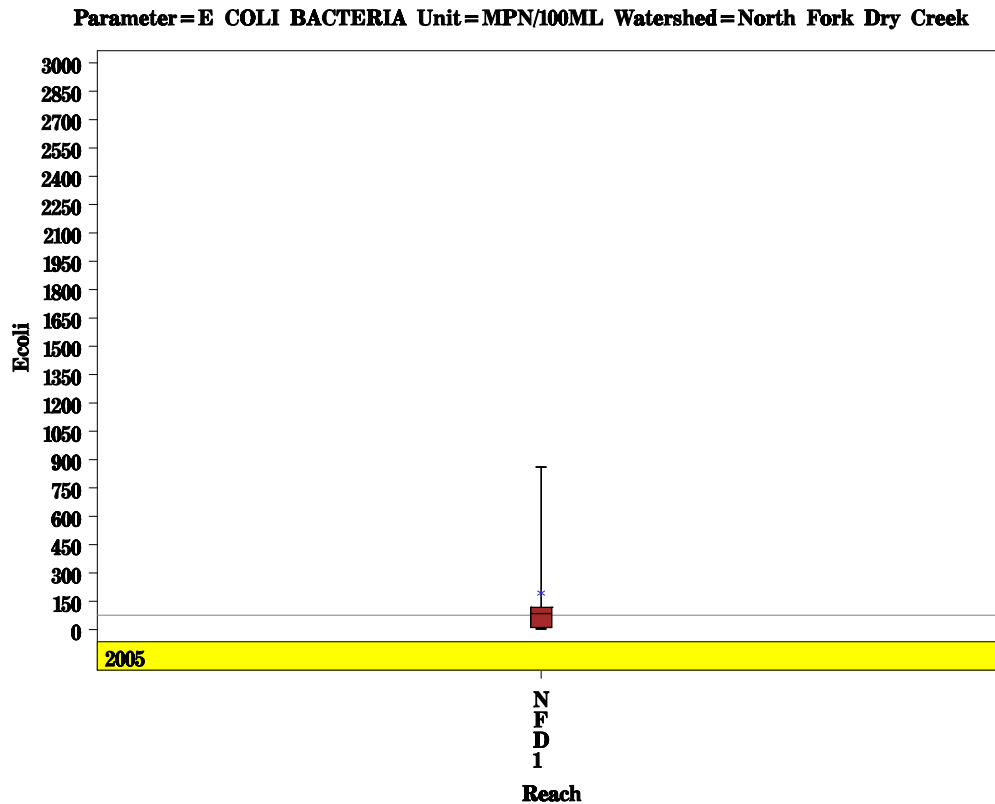
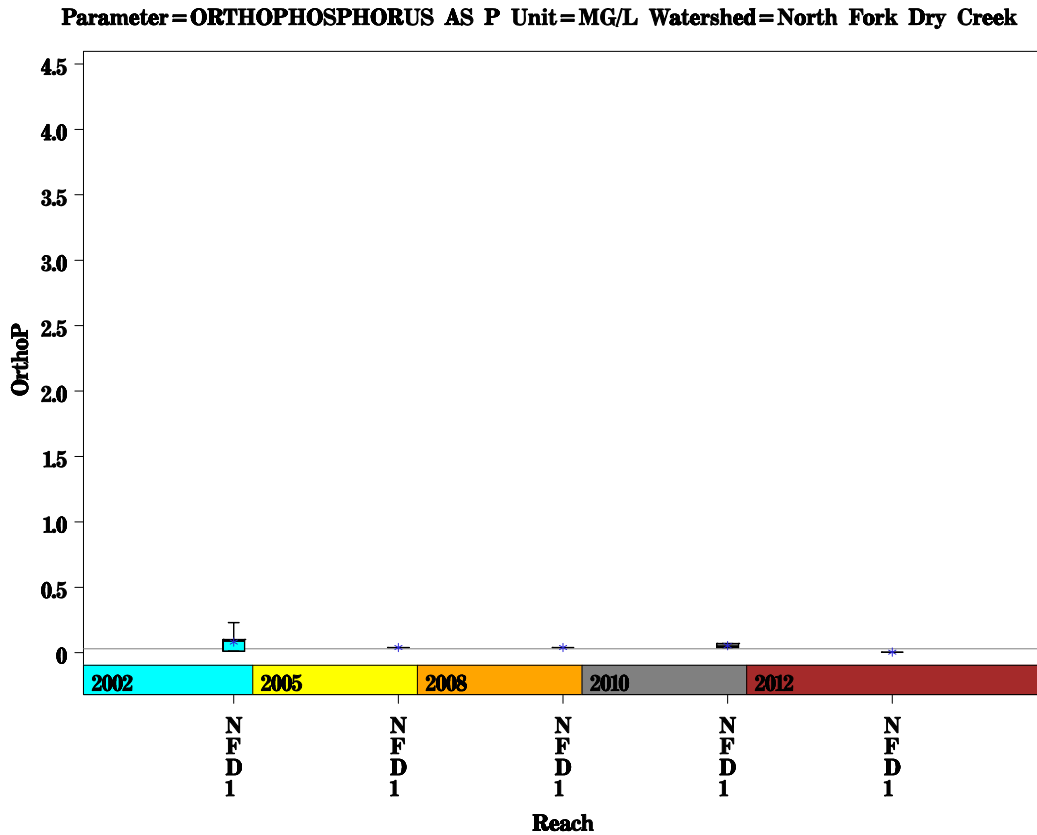
North Fork Dry Creek Watershed

Data Summary Graphs – Ammonia and Nitrate/Nitrite (Downstream to Upstream by Year)



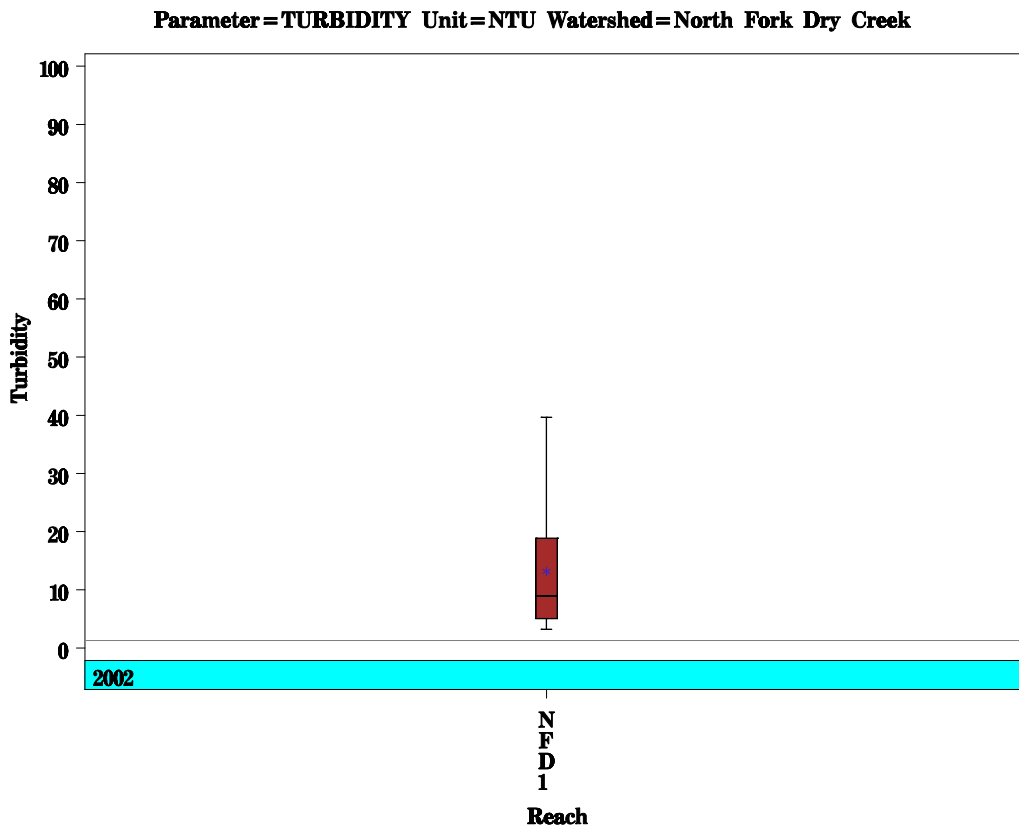
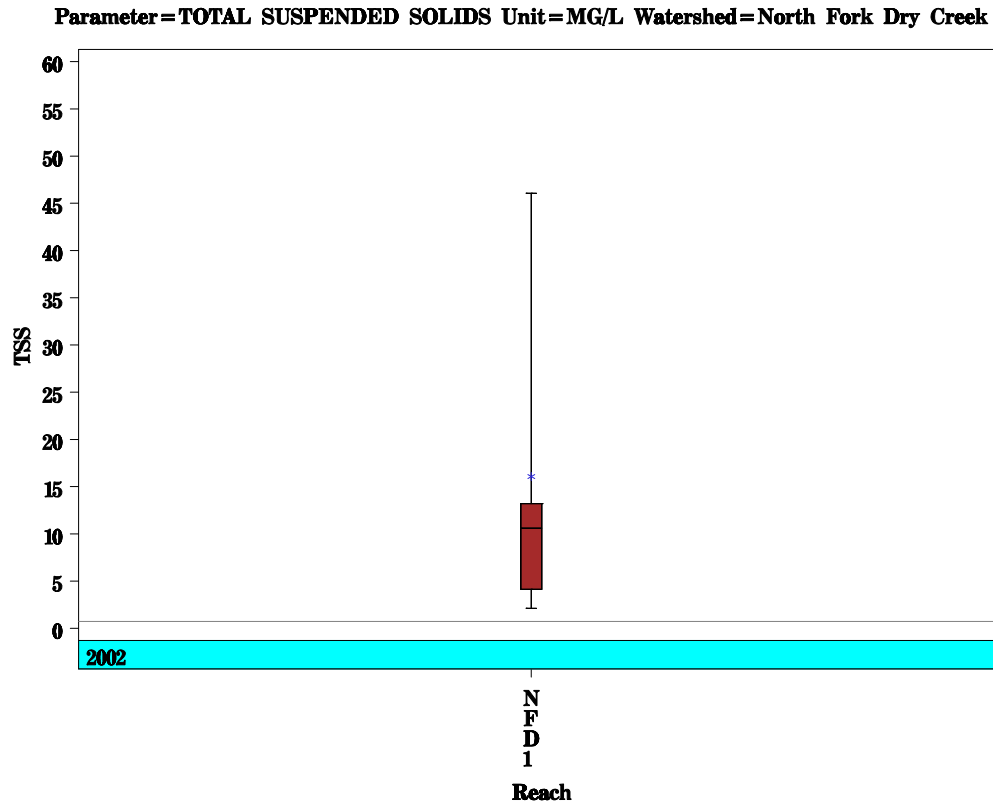
North Fork Dry Creek Watershed

Data Summary Graphs – Orthophosphate and E.coli (Downstream to Upstream by Year)



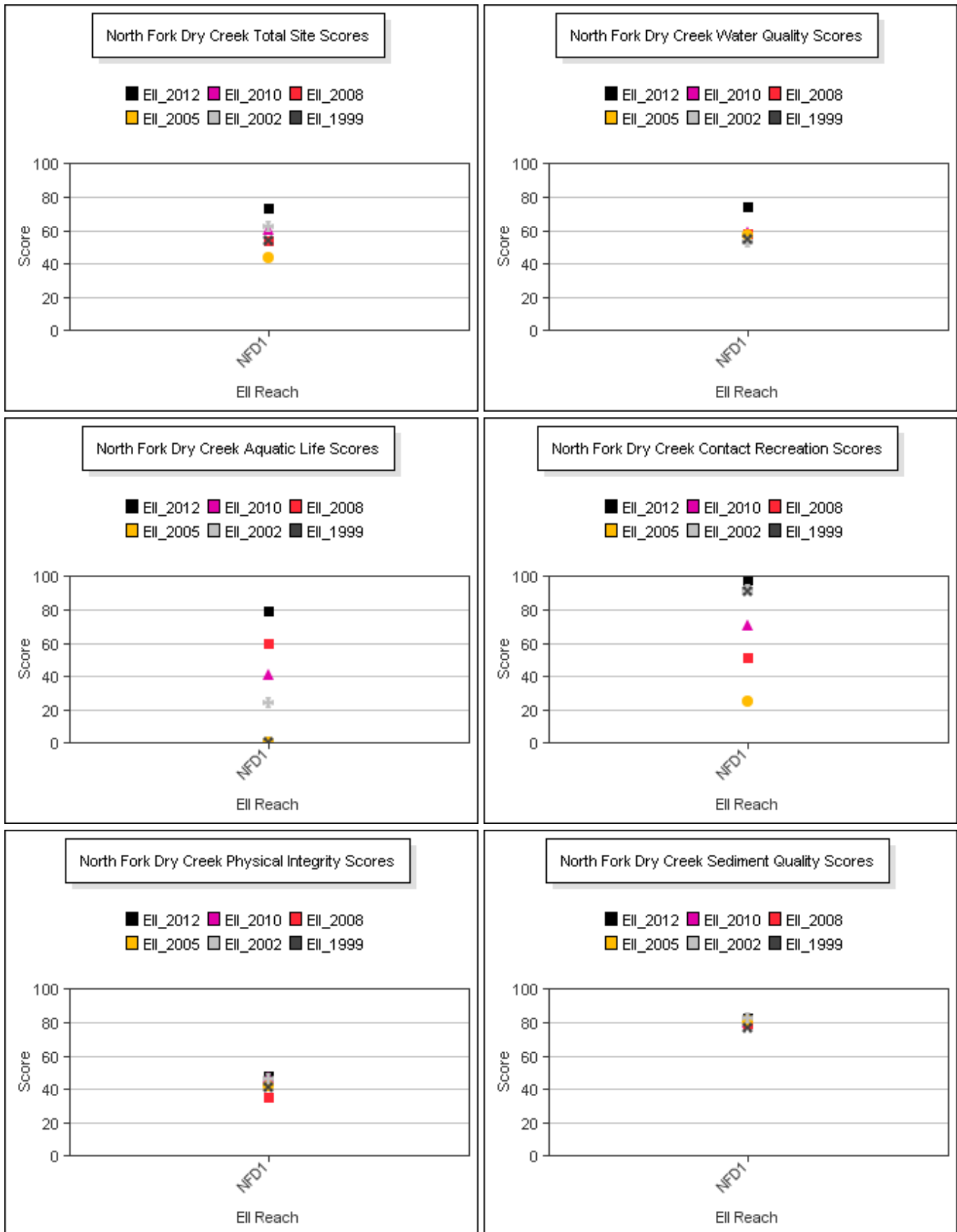
North Fork Dry Creek Watershed

Data Summary Graphs – Total Suspended Solids and Turbidity (Downstream to Upstream by Year)



North Fork Dry Creek Watershed

Score Summary – Reach scores for each sample year



North Fork Dry Creek Watershed

Site Photographs



1217_t00-us-03_28_2002



1217_t00-ds-03_28_2002



1217_t00-ds-06_16_2005



1217_t0-ds-06_27_2008



1217_00-us-05_18_2010



1217_00-ds-05_18_2010

North Fork Dry Creek Watershed

Site Photographs



1218_t00-us-06_21_2000



1218_t00-ds-06_21_2000



1218_t00-us-03_28_2002



1218_t00-ds-03_28_2002



1218_t00-ur-03_28_2002

This page left intentionally blank