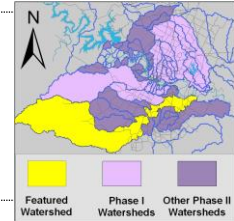


# Onion Creek Watershed

Catchment	Total area	211 sq. miles				
	Area in recharge	24.6 sq. miles				
	Creek length	79 miles				
	Receiving water	Colorado River				
Demographics	2000 population	32,955				
Land Use	Impervious cover (2003 estimate)	3.28 %				
Overall EII Scores	2001	2004	2007	2010	2012	
	82	80	79	86	80	



## Flow Regime\* for Sample Sites on Onion Creek

Site #	Site Name	2004						2007						2010				2011-2012				
		Mar WQ	May WQ	May Bio	Jun WQ	Oct WQ	Dec WQ	Feb WQ	May WQ	Jun Bio	Jul Bio	Aug Bio	Sep WQ	Dec WQ	Mar WQ	May WQ	May Bio	Oct WQ	Dec WQ	Mar WQ	Apr Bio	May Bio
1365	Pfulman	B	B	B	B	B	B	B	B	B				B	B							
4595	Hudson															B	B	B	B	n	B	B
612	nr Driftwood	B	B	B	B	B	B	B	B	S				B	B	B	B	B	B	n	B	B
236	Twin Cks	B	B	B	B	B	B	B	B	B				B	B	B	B	B	B	B	B	B
610	Buda	B	B	B	B	B	B															
241	Us Footbridge							B	B	B				B	B	B	B	B	B	B	B	B
255	McKinney Lwr Falls	B	B	B	B	B	B	B	B	S				B	B	B	B	B	B	B	B	B
1366	SAR	B	B	B	B	B	B	B	B		S	B	B	B	B	B	B	B	B	B	B	B

\* B = baseflow n = no flow storm = storm flow blue = Samples were taken grey = Samples were not taken blank = not visited

## Summary of 2012 Data for Onion Creek

Summary	Parameter	Mean	Max	Min	Discussion
Physicochemical	D.O. mg/l	7.8	11.3	4.5	Mostly within normal range, high and low values taken at site 255.
	pH st.units	7.97	8.430	7.34	Mostly within normal range, a few high and low values.
	Cond uS/cm	565	740	391	Within normal range, consistently below average.
Nutrients	NH <sub>3</sub> mg/l	0.017	0.100	0.008	Mostly within normal range, some high values.
	NO <sub>3</sub> mg/l	0.804	2.670	0.008	Within normal range, some above average values.
	Ortho P mg/l	0.005	0.017	0.004	Generally low, within normal range.
Sediment Load	TSS mg/l	3.2	10.20	1.00	Some above average values, but within normal range.
	Turbidity ntu	3.48	23.44	0.22	Mostly within normal range, some extremely elevated values at mouth site.
Biology	E.Coli /100ml	161	517	8	Within normal range.

Benthic Macroinvertebrates and Diatoms: evaluations are provided in the introduction of this report

## Index Scores\* for North Fork Dry Creek Sites by Year

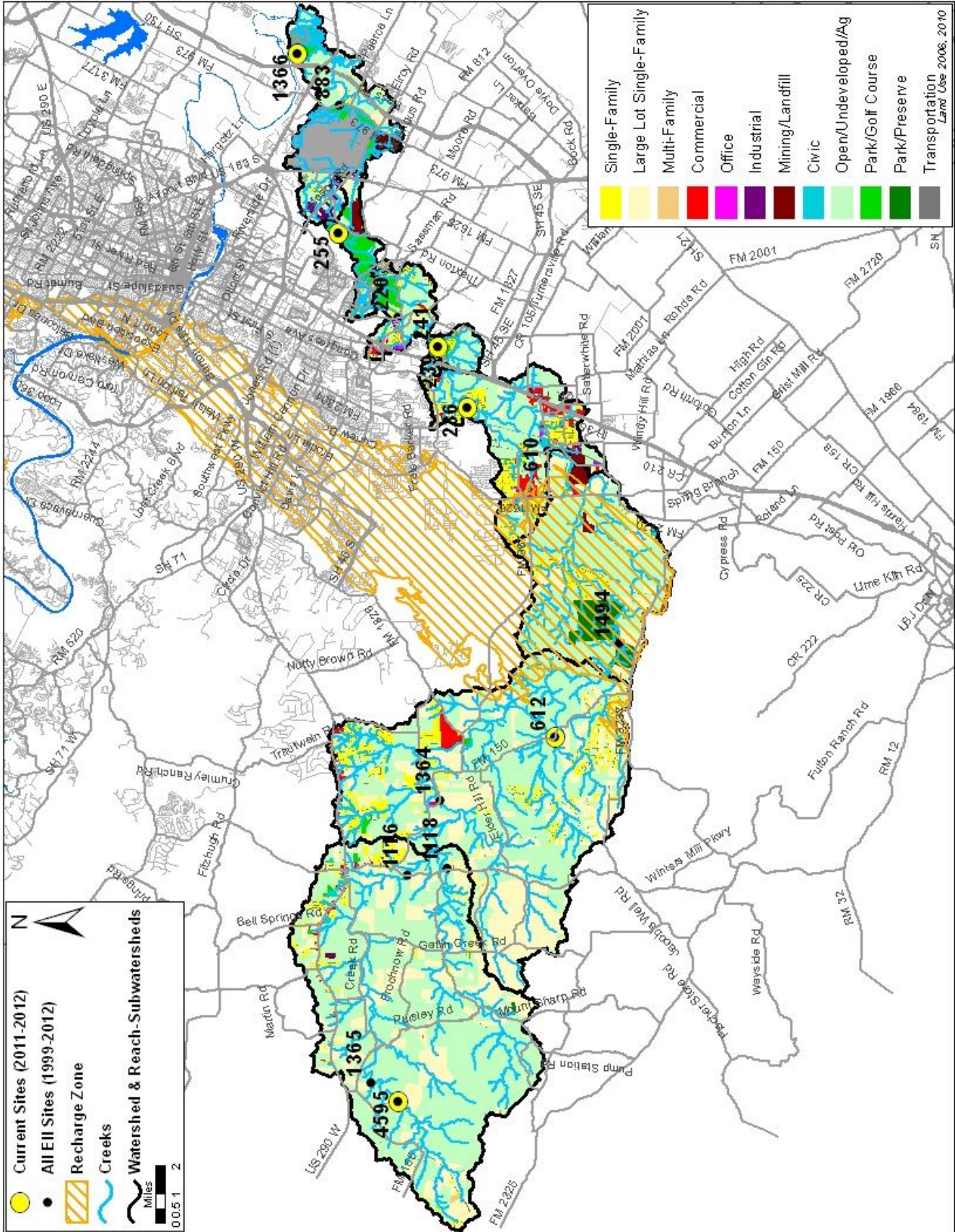
Reach	Site	Site Name	Year	Water Quality	Sediment **	Contact Rec.	Non-Contact Rec.	Physical Integrity	Aquatic Life	Benthic subindex	Diatom subindex	Total EII Score
ONI1	1366	Onion @ South Austin Regional WWTP	2001	46	88	84	88	82	68	91		72
ONI2	255	Onion @ McKinney Falls ds Lower Falls	2001	58	88	90	94	82	82	87	77	78
ONI3	220	Onion Creek @ Old Lockhart Hwy (ON4)	2001	60	88	86	84	87	66	61	70	74
ONI4	236	Onion @ Twin Creeks Road (OC1)	2001	65	88	88	93	84	72	60	83	78
ONI4	239	Onion Creek Upstream of IH35 (OC2)	2001	67	88	83	92	94	70	70	69	78
ONI5	1364	Onion @ Most US Hwy 150 Crossing	2001	71	88	89	100	86	73	70	76	81
ONI5	1494	Onion Creek @ Sky Ranch	2001	68	88	89	100	95	67	70	64	80
ONI6	1118	Onion Creek South Fork @ Hwy 12	2001	68	88	81	98	82	65	69	61	76
ONI6	1365	Onion Creek at Pfulman Ranch	2001	71	88	94	98	82	64	78	50	79
ONI1	1366	Onion @ South Austin Regional WWTP	2004	52	89	57	76	74	88	97	79	73
ONI2	255	Onion @ McKinney Falls DS Lower Falls	2004	59	89	58	85	82	89	94	83	77
ONI4	236	Onion @ Twin Creeks Road (OC1)	2004	77	89	66	87	84	80	74	85	81
ONI4	610	Onion Creek @ Buda (USGS)	2004	75	89	79	71	67	71	45	96	75
ONI5	612	Onion Creek near Driftwood (Hwy 150)	2004	77	89	60	100	92	97	100	93	86
ONI6	1365	Onion Creek at Pfulman Ranch	2004	85	89	72	99	97	88	99	77	88
ONI1	1366	Onion @ South Austin Regional WWTP	2007	52	82	59		89	75	100	50	71
ONI2	255	Onion @ McKinney Falls DS Lower Falls	2007	63	82	83	70	85	91	96	86	79
ONI3	241	Onion Creek US of Footbridge (OC3)	2007	62	82	70	83	69	91	100	81	76
ONI4	236	Onion @ Twin Creeks Road (OC1)	2007	70	82	63	89	78	95	96	94	80
ONI5	612	Onion Creek near Driftwood (Hwy 150)	2007	69	82	50	100	91	99	98	100	82
ONI6	1365	Onion Creek at Pfulman Ranch	2007	77	82	69	97	84	93	99	87	84
ONI1	1366	Onion @ South Austin Regional WWTP	2010	63	87	84	91	87	94	98	89	84
ONI2	255	Onion @ McKinney Falls DS Lower Falls	2010	72	87	87	91	89	95	95	95	87
ONI3	241	Onion Creek US of Footbridge (OC3)	2010	65	87	67	85	70	91	85	96	78
ONI4	236	Onion @ Twin Creeks Road (OC1)	2010	79	87	85	94	82	100	100	99	88
ONI5	612	Onion Creek near Driftwood (Hwy 150)	2010	80	87	83	97	97	96	92	100	90
ONI6	4595	Onion @ Hudson Tract	2010	82	87	93	100	89	89	91	87	90
ONI1	1366	Onion @ South Austin Regional WWTP	2012	54	86	60	93	91	90	100	80	79
ONI2	255	Onion @ McKinney Falls DS Lower Falls	2012	61	86	57	87	88	88	100	76	78
ONI3	241	Onion Creek US of Footbridge (OC3)	2012	55	86	35	97	74	98	100	95	74
ONI4	236	Onion @ Twin Creeks Road (OC1)	2012	64	86	42	81	89	96	97	95	76
ONI5	612	Onion Creek near Driftwood (Hwy 150)	2012	79	86	67	94	96	92	84	100	86
ONI6	4595	Onion @ Hudson Tract	2012	75	86	73	94	89	97	100	94	86

\* blank cells indicate parameter was not collected, blank row indicate site was dropped \*\*sediment samples only collected at the downstream site

100-87.5 Excellent 87.5-75 V. Good 75-62.5 Good 62.5-50 Fair 50-37.5 Marginal 37.5-25 Poor 25-12.5 Bad 12.5-0 V. Bad

# Onion Creek Watershed

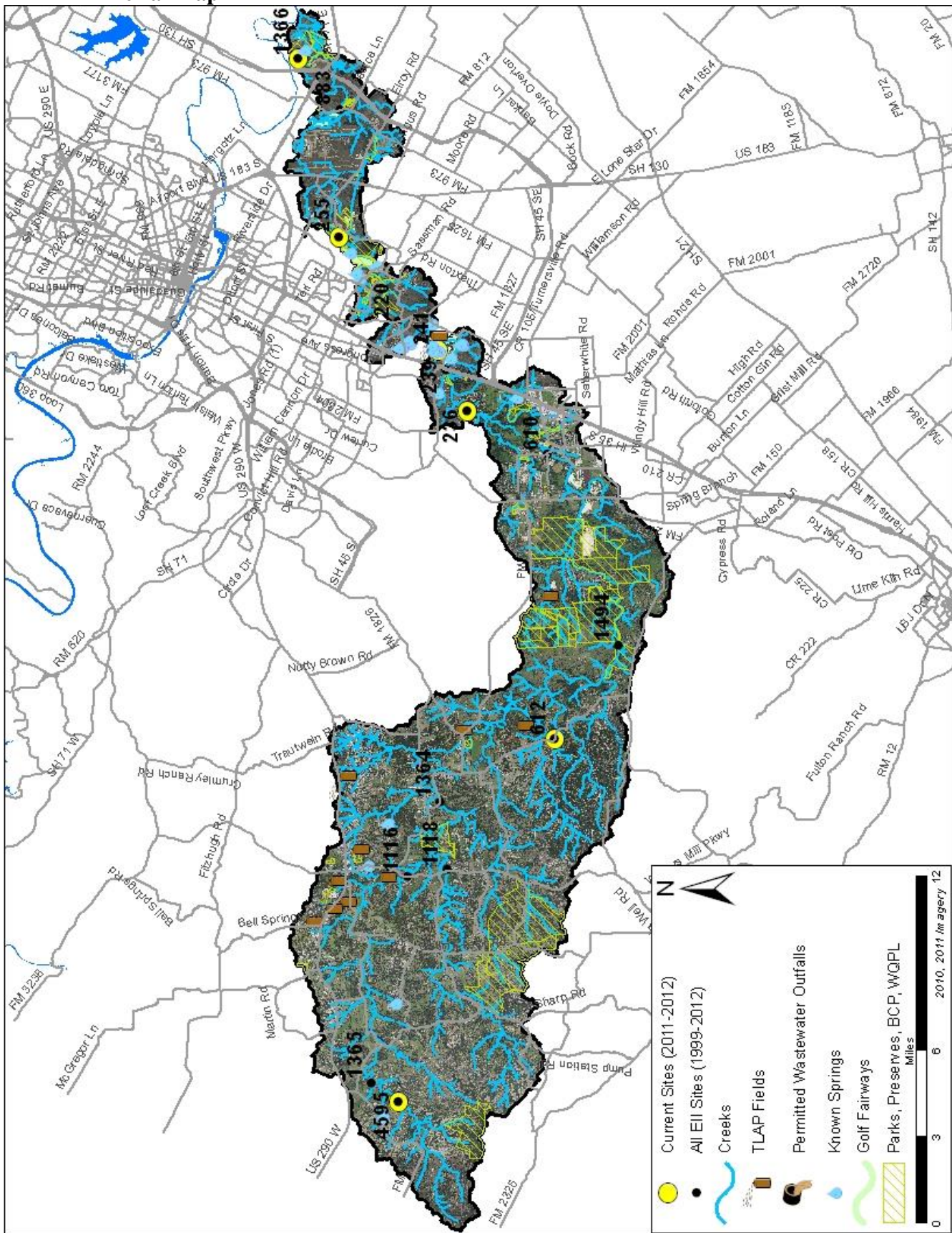
## Land Use Map





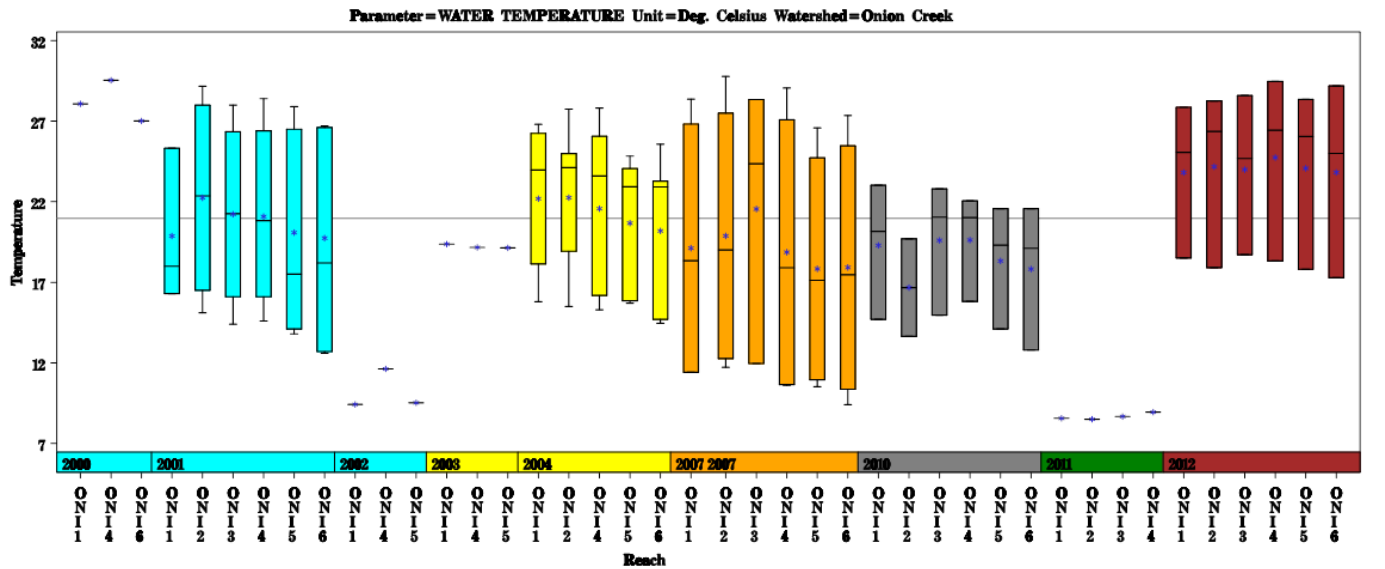
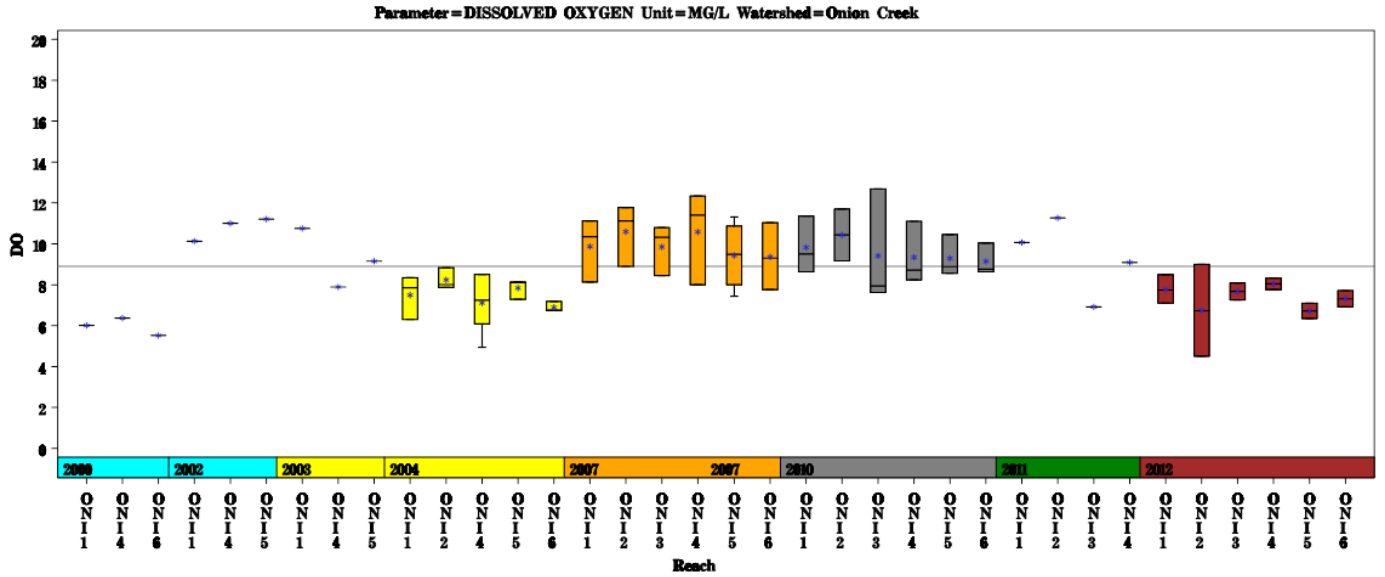
# Onion Creek Watershed

## Aerial Map



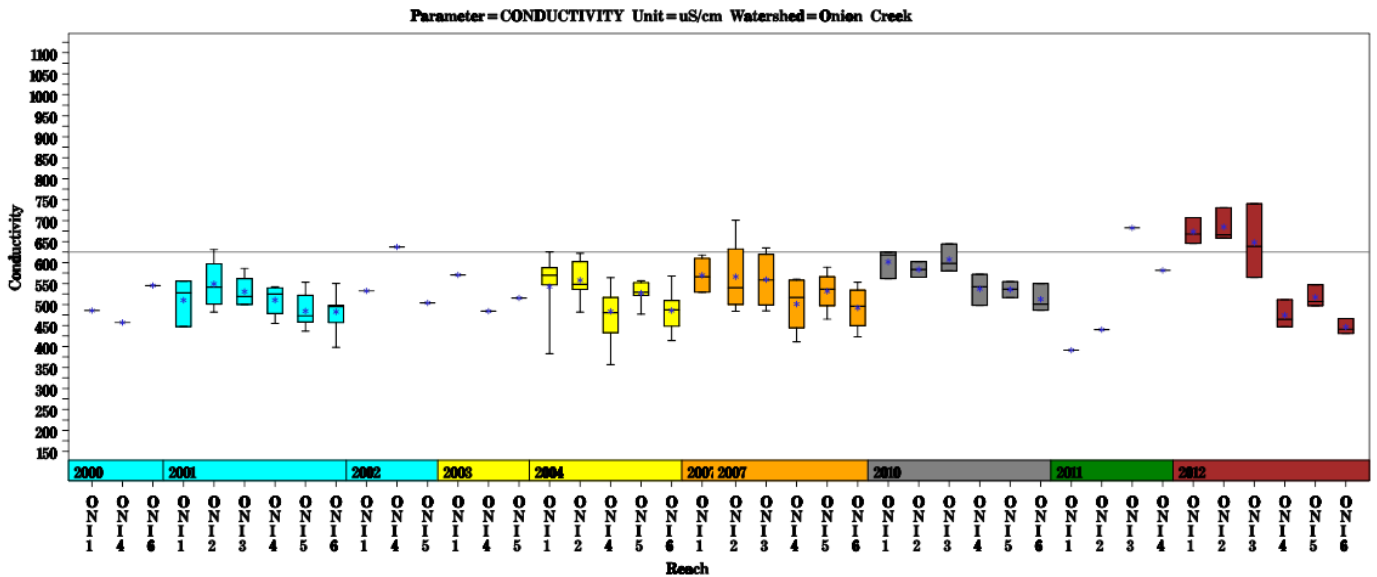
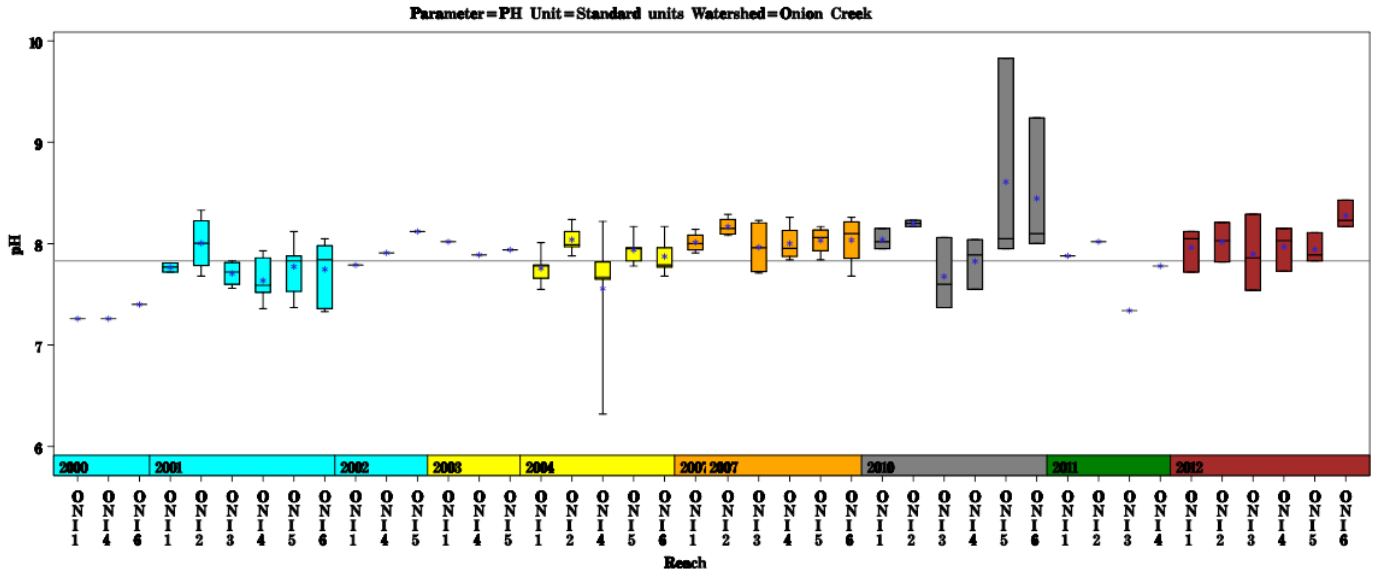
# Onion Creek Watershed

Data Summary Graphs – Dissolved Oxygen and Temperature (Downstream to Upstream by Year)



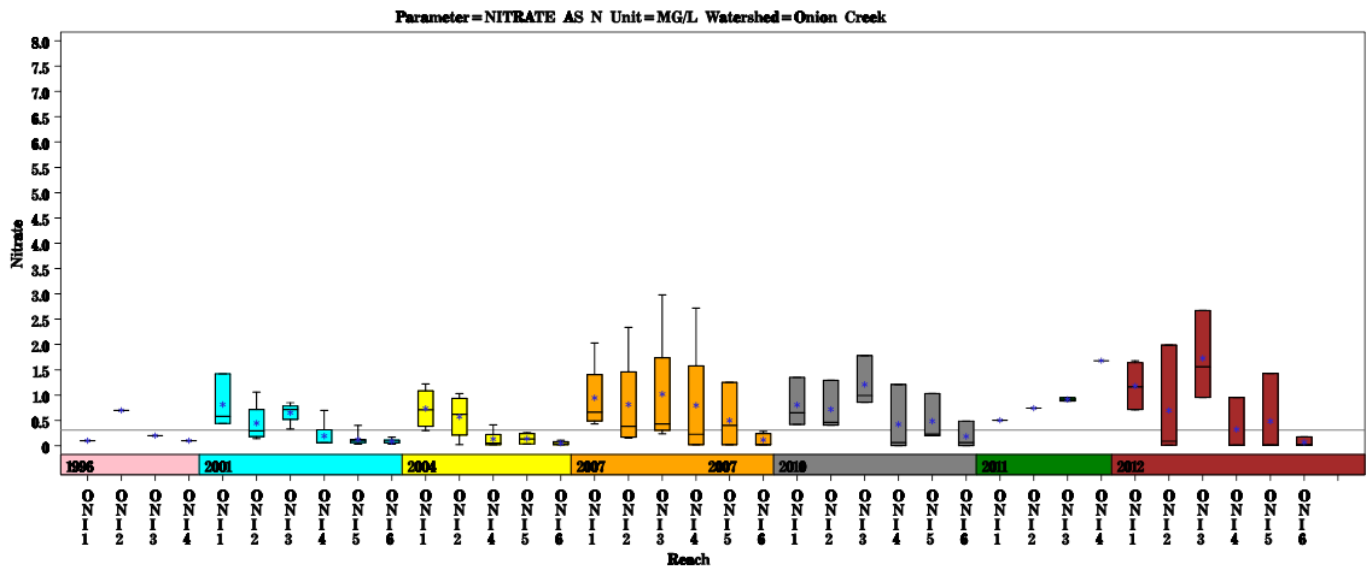
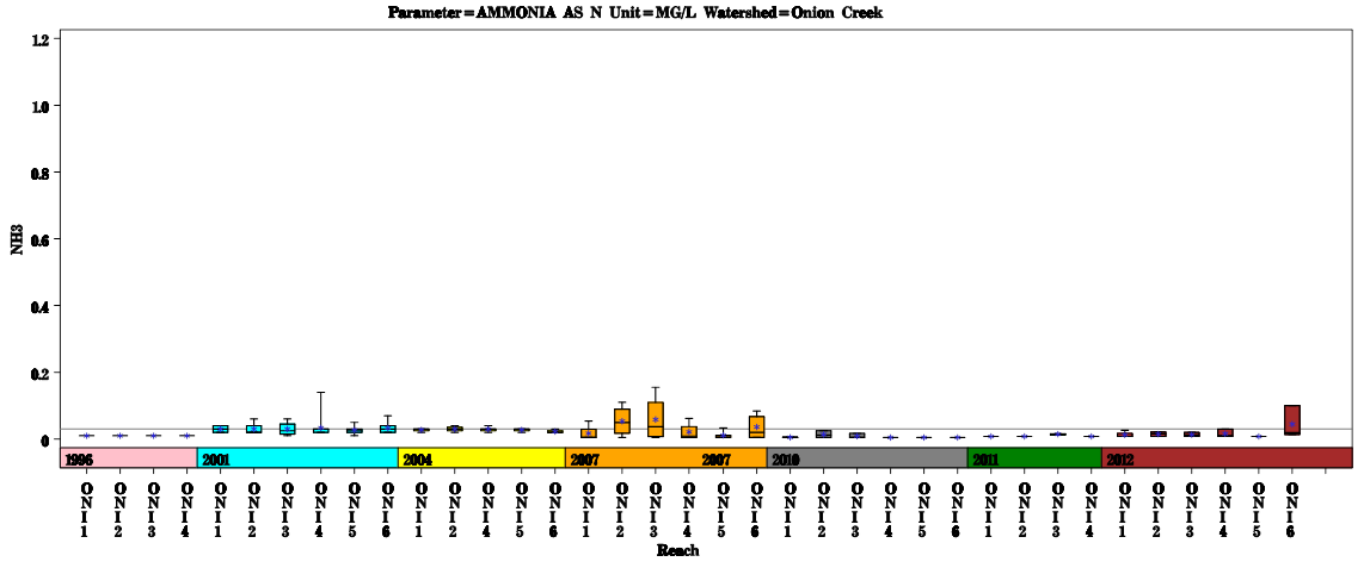
# Onion Creek Watershed

Data Summary Graphs – pH and Conductivity (Downstream to Upstream by Year)



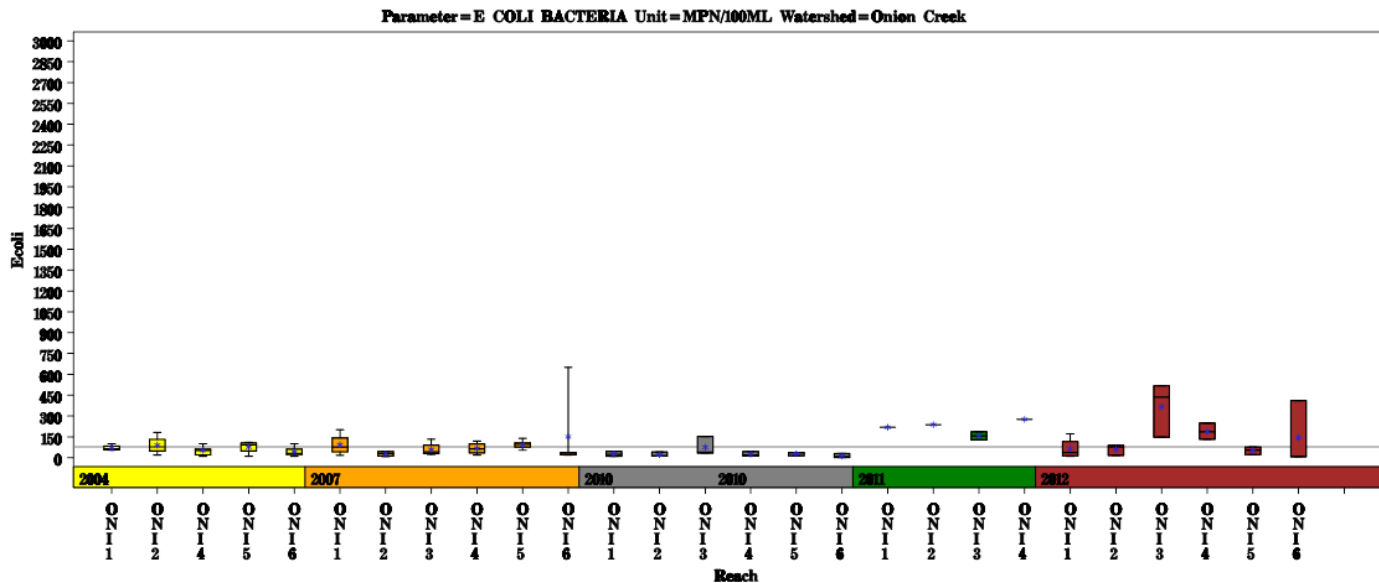
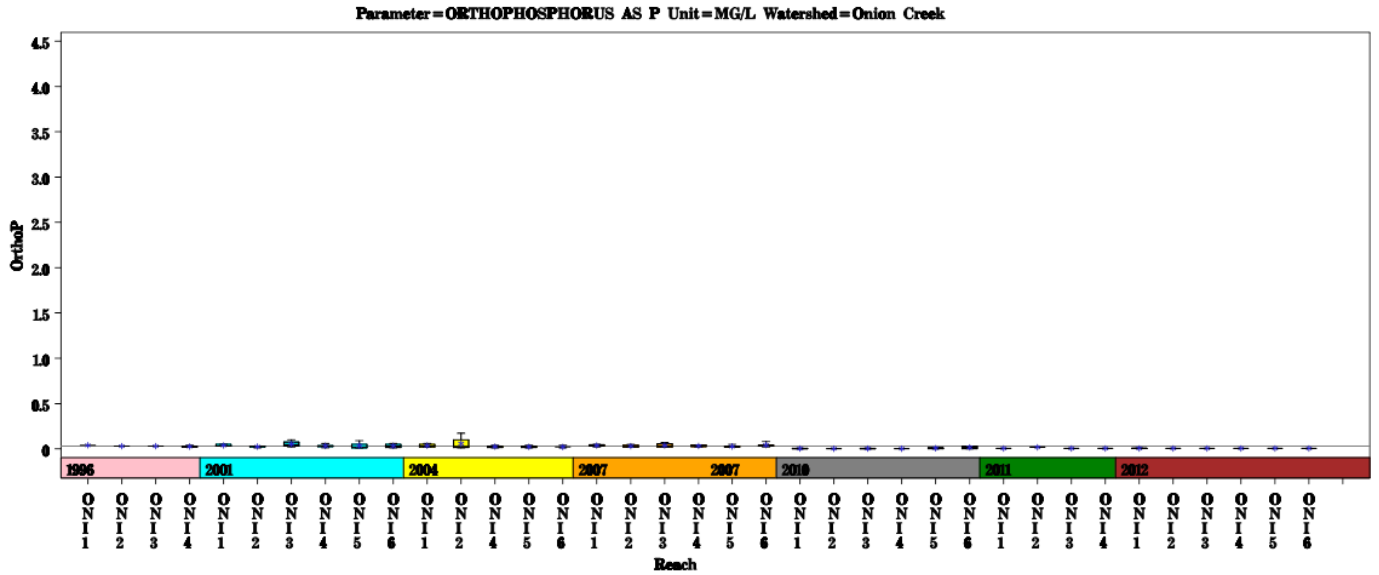
# Onion Creek Watershed

Data Summary Graphs – Ammonia and Nitrate/Nitrite (Downstream to Upstream by Year)



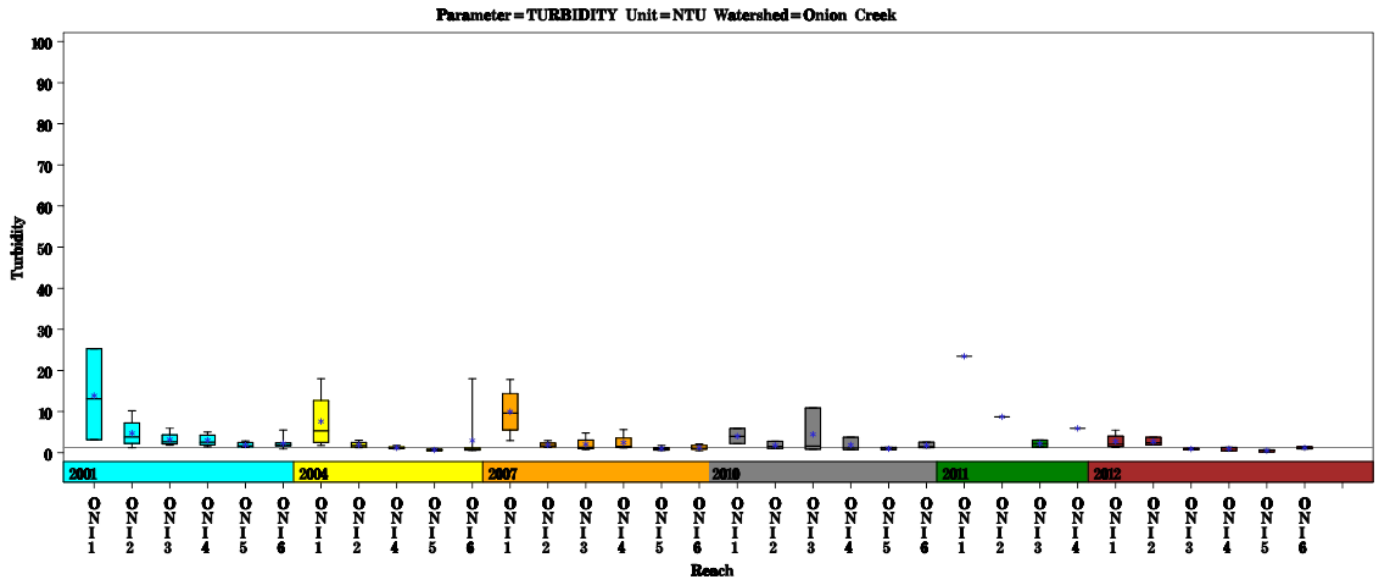
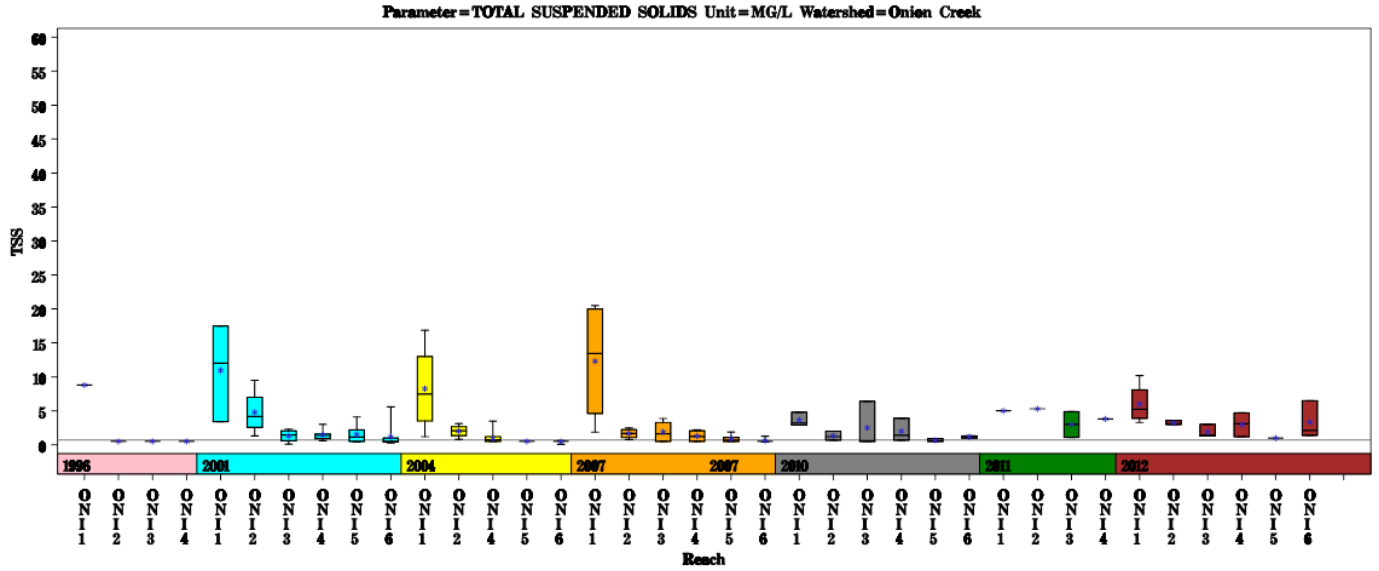
# Onion Creek Watershed

Data Summary Graphs – Orthophosphate and E.coli (Downstream to Upstream by Year)



# Onion Creek Watershed

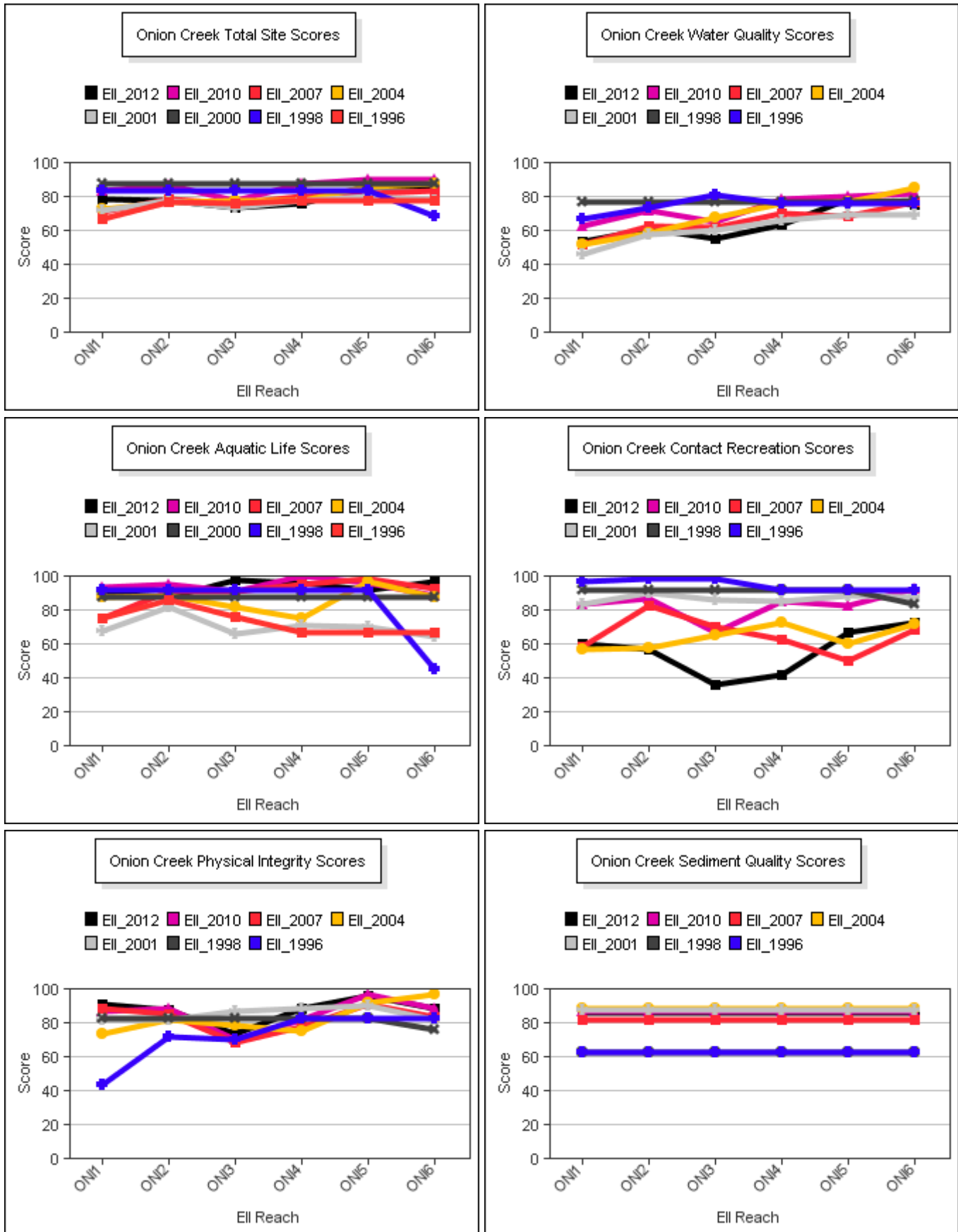
Data Summary Graphs – Total Suspended Solids and Turbidity (Downstream to Upstream by Year)





# Onion Creek Watershed

## Score Summary – Reach scores for each sample year



# Onion Creek Watershed

## Site Photographs



4595\_00-ds-05\_25\_2010



1365\_t3-us-08\_07\_2007



612\_00-ds-05\_25\_2010610



236\_00-ur-05\_25\_2010



239\_t00-ds-03\_06\_2002

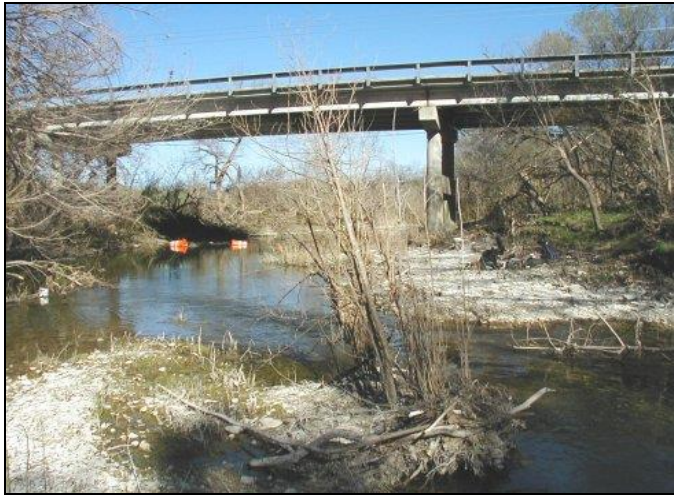


241\_00-us-05\_27\_2010



# Onion Creek Watershed

## Site Photographs



220\_t00-ds-03\_04\_2002



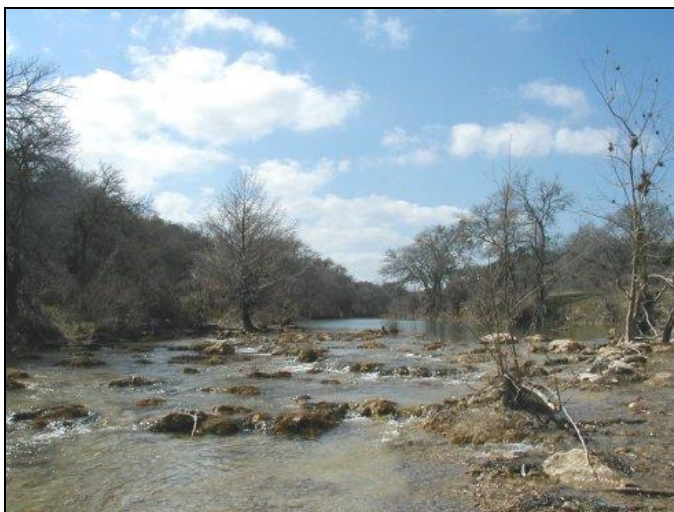
255\_00-us-05\_19\_2010611



1364\_t00-ds-03\_17\_2003



1366\_00-us-05\_28\_2010



1494\_t00-us-03\_06\_2002



610\_t00-us-05\_20\_2004

This page left intentionally blank