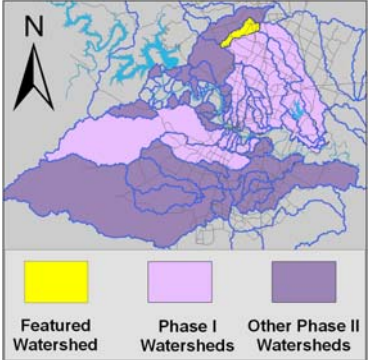


Rattan Creek Watershed

Summary Sheet

Catchment	Total area	7.2 sq. miles				
	Area in recharge	7 sq. miles				
	Creek length	8 miles				
	Receiving water	Lake Creek				
Demographics	2000 population	11,863				
	2030 projected population	33,506				
	30 year projected % increase	182				
Land Use	Impervious cover (2003 estimate)	10.06 %				
Overall EII Scores	2001	2004	2007	2010	2012	
	69	49	54	52	44	



Flow Regime* for Sample Sites on Rattan Creek

Site #	Site Name	2004					2007					2010				2011	2012		
		Mar	May	Jun	Oct	Dec	Feb	May	Jun	Sep	Dec	Mar	May	May	Oct	Dec	Mar	Apr	May
		WQ	WQ	WQ	WQ	WQ	WQ	WQ	Bio	WQ	WQ	WQ	WQ	Bio	WQ	WQ	WQ	Bio	Bio
1009	us Parmer	B	B	B	B	B	B	n	S	n	n	B	n	n	n	n	n		n
1097	Shadow brook	n	n	B	B	B	B	B	n	n	n	n	n	n	B	n	n	n	

* B = baseflow n = no flow storm = storm flow blue = Samples were taken grey = Samples were not taken blank = not visited

Summary of 2012 Data for Rattan Creek

Summary	Parameter	Mean	Max	Min	Discussion
Physicochemical	D.O. mg/l				No data for 2011-2012 due to lack of flow
	pH st.units				
	Cond uS/cm				
Nutrients	NH ₃ mg/l				
	NO ₃ mg/l				
	Ortho P mg/l				
Sediment Load	TSS mg/l				
	Turbidity ntu				
Biology	E.Coli /100ml				
	Benthic Macs				
	Diatoms				

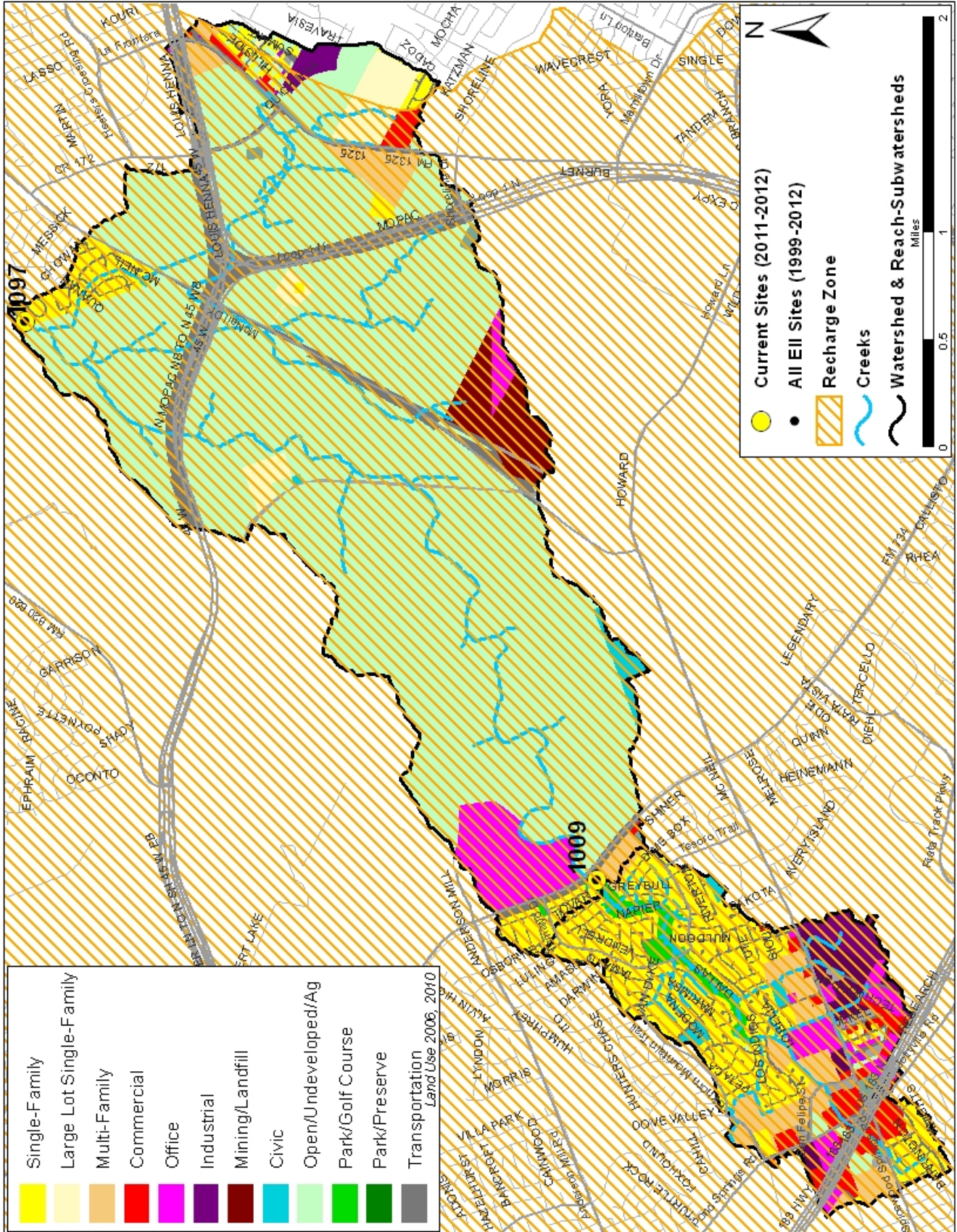
Index scores* for Rattan Creek Sites by Year

Reach	Site	Site Name	Year	Water Quality	Sediment**	Contact Rec.	Non-Contact Rec.	Physical Integrity	Aquatic Life	Benthic subindex	Diatom subindex	Total EII Score
RAT1	1097	Rattan Creek @ Shadowbrook Circle	1998	50	78	84	59	68	56	60	52	66
RAT2	1009	Rattan Creek US of Parmer Lane	1998	75	78	75	62	59				58
RAT1	1097	Rattan Creek @ Shadowbrook Circle	2001	50	90	74	73	63	59	60	58	65
RAT2	1009	Rattan Creek US of Parmer Lane	2001	51	90	84	73	46	69	75	63	67
RAT1	1097	Rattan Creek @ Shadowbrook Circle	2004	56	82	32	71	53				49
RAT2	1009	Rattan Creek US of Parmer Lane	2004	64	82	37	53	50				48
RAT1	1097	Rattan Creek @ Shadowbrook Circle	2007	69	76	74	51	30				50
RAT2	1009	Rattan Creek US of Parmer Lane	2007	49	76	50	62	41	61	61		57
RAT1	1097	Rattan Creek @ Shadowbrook Circle	2010	68		48	47	57				44
RAT2	1009	Rattan Creek US of Parmer Lane	2010	62		50	52	64	67	67		59
RAT1	1097	Rattan Creek @ Shadowbrook Circle	2012					48				16
RAT2	1009	Rattan Creek US of Parmer Lane	2012				65	74	78	63	92	72

* blank cells indicate parameter was not collected, blank row indicate site was dropped **sediment samples only collected at the downstream site
 100-87.5 Excellent 87.5-75 V. Good 75-62.5 Good 62.5-50 Fair 50-37.5 Marginal 37.5-25 Poor 25-12.5 Bad 12.5-0 V. Bad

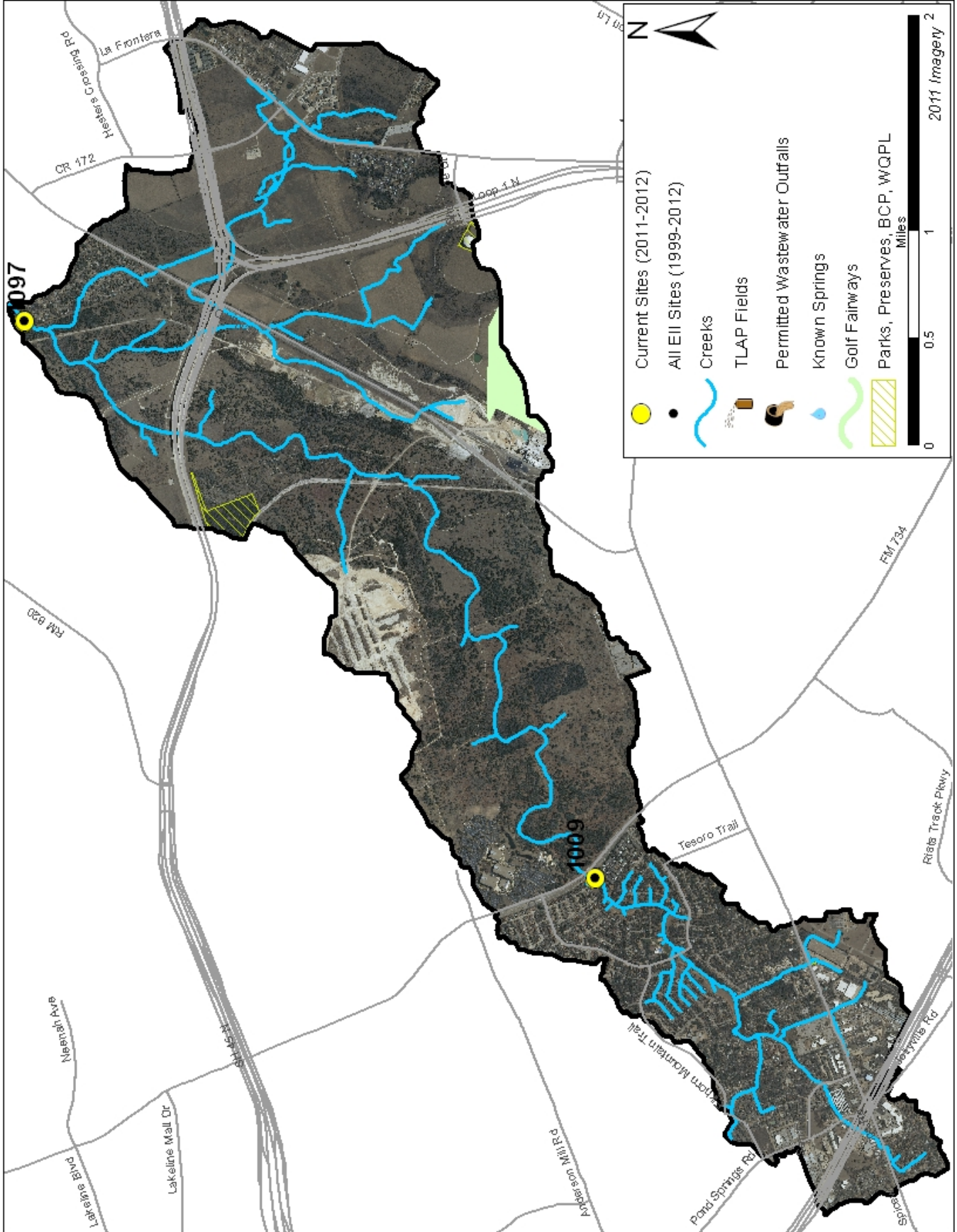
Rattan Creek Watershed

Land Use Map



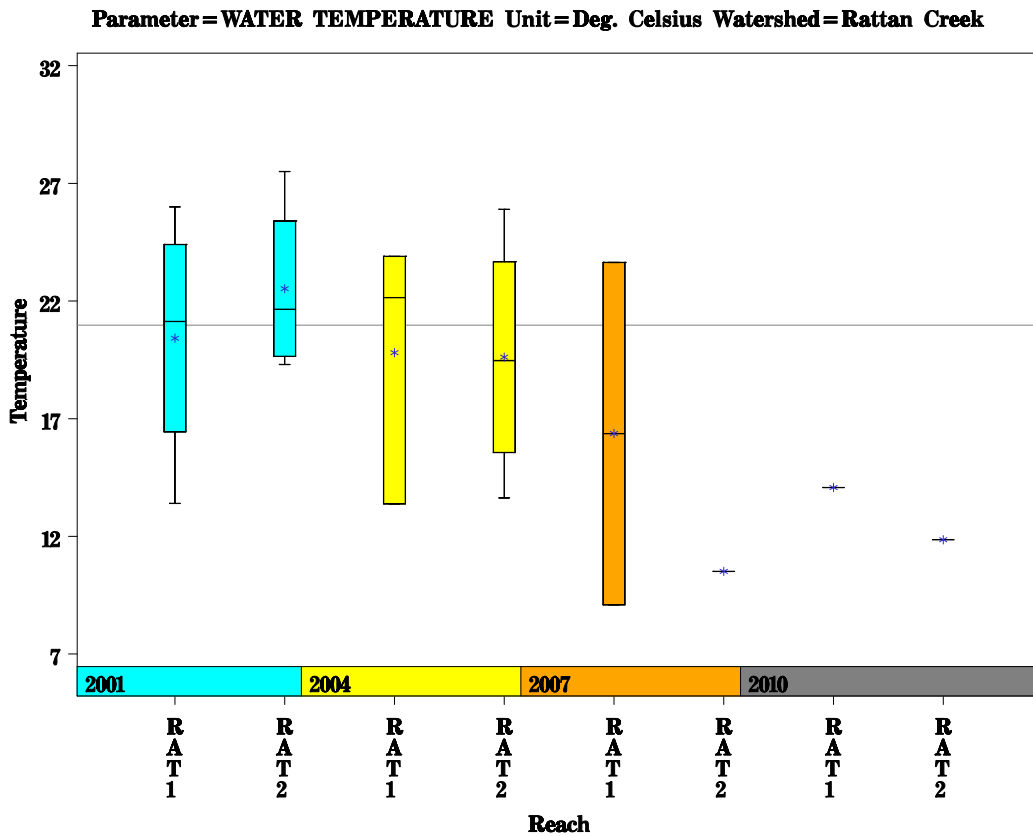
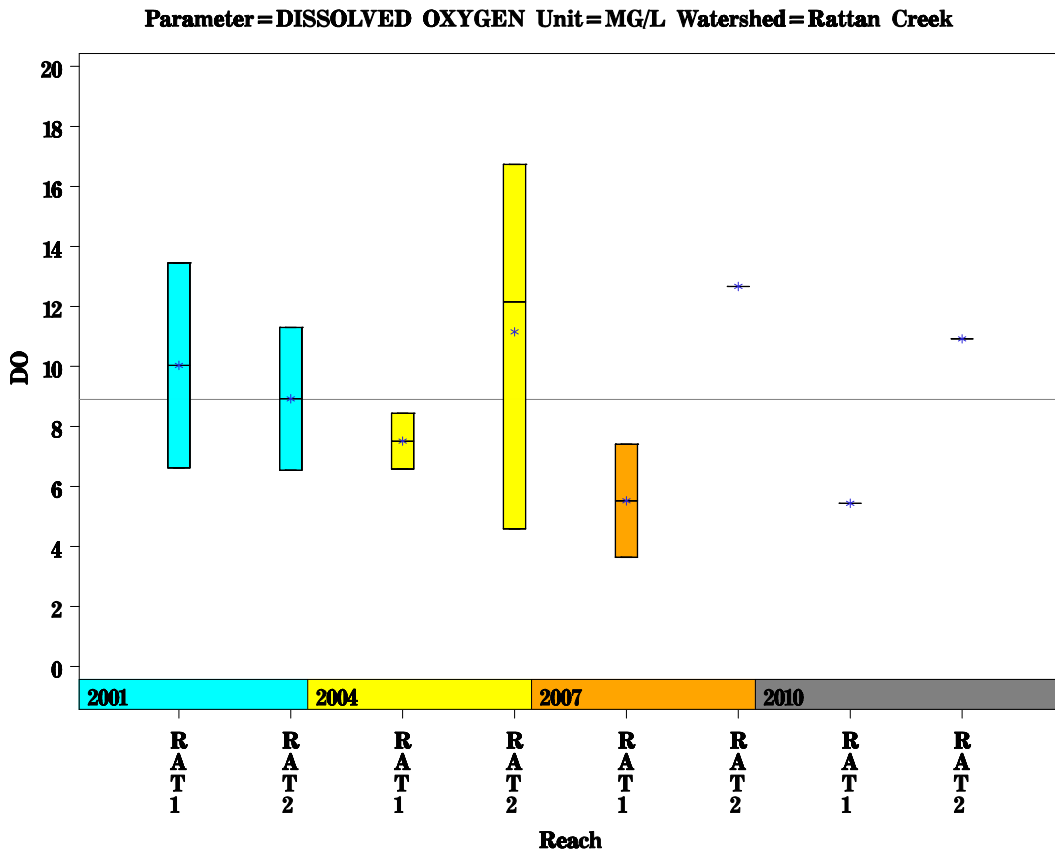
Rattan Creek Watershed

Aerial Map



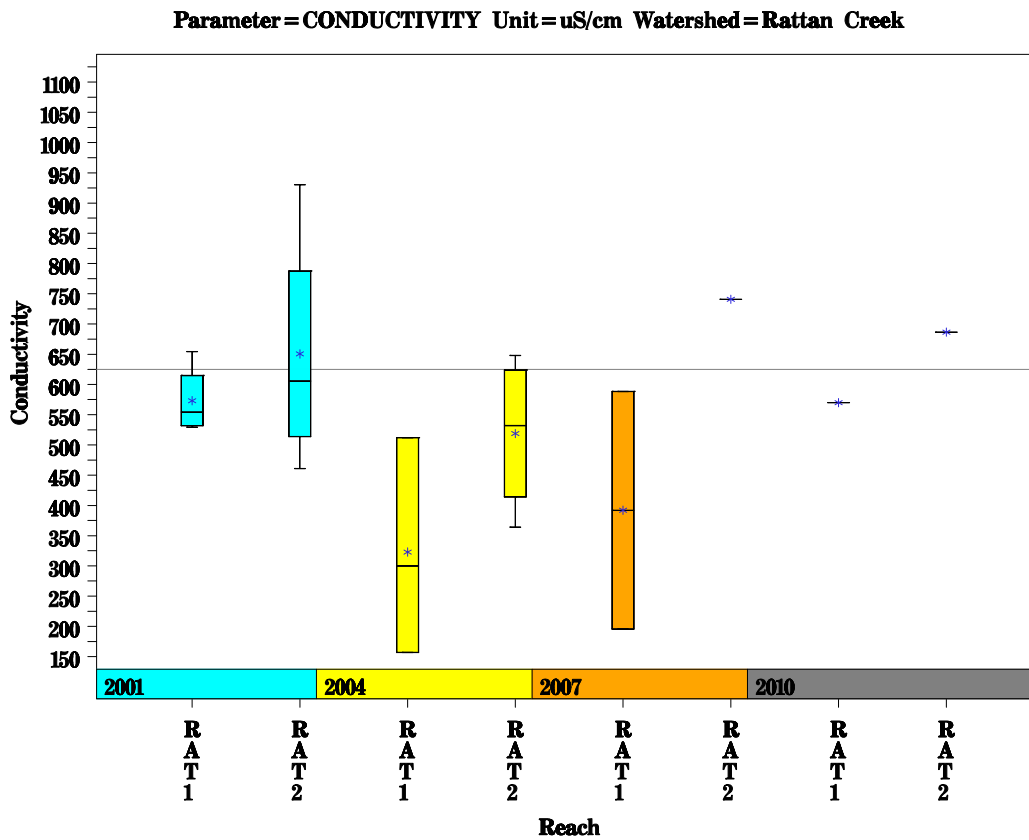
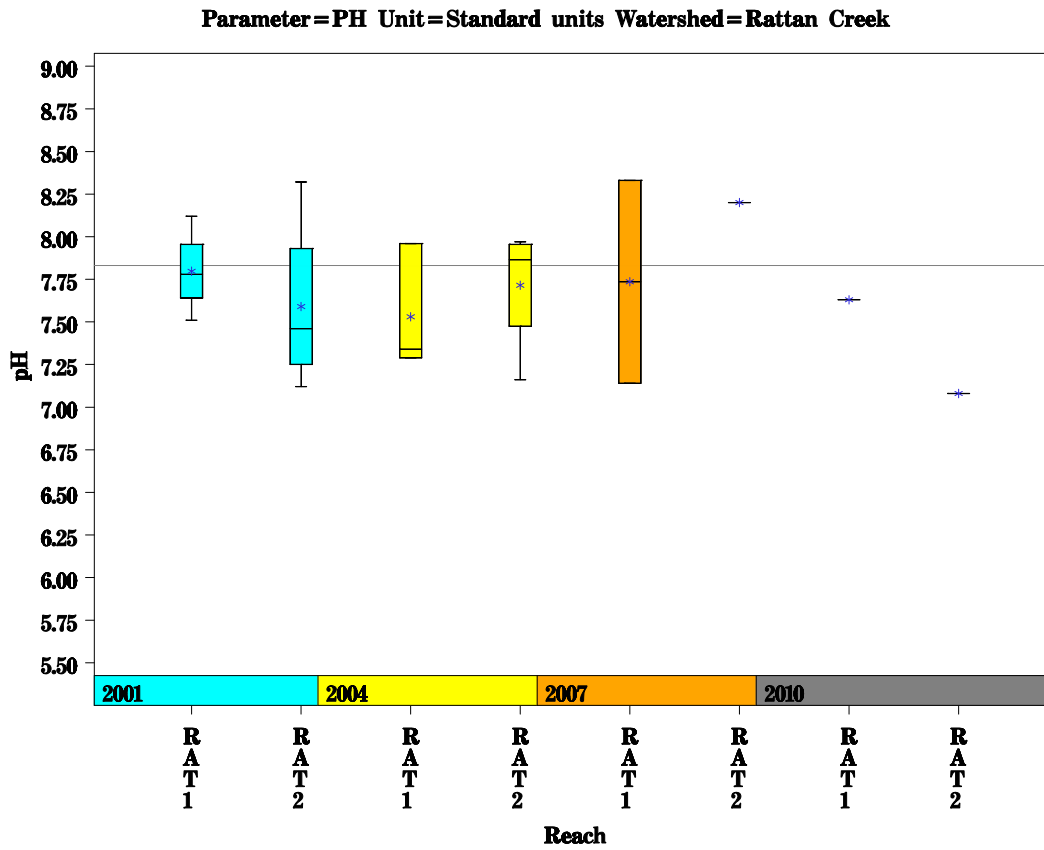
Rattan Creek Watershed

Data Summary Graphs – Dissolved Oxygen and Temperature (Downstream to Upstream by Year)



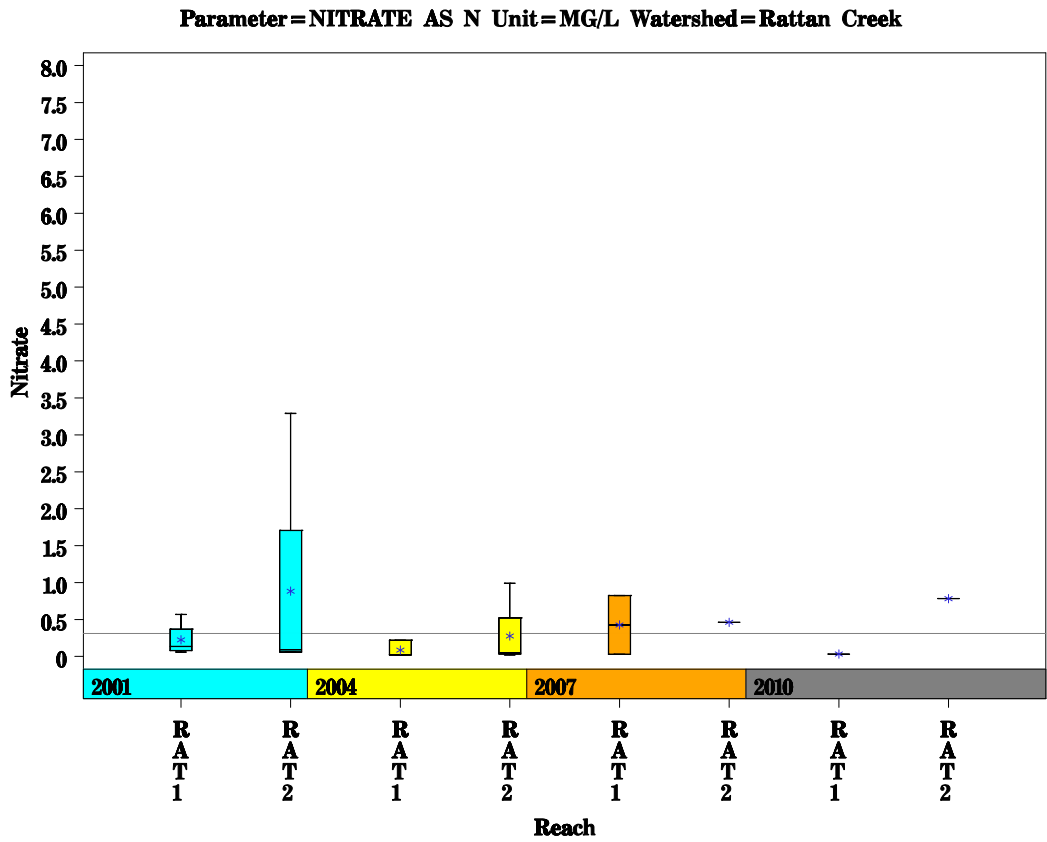
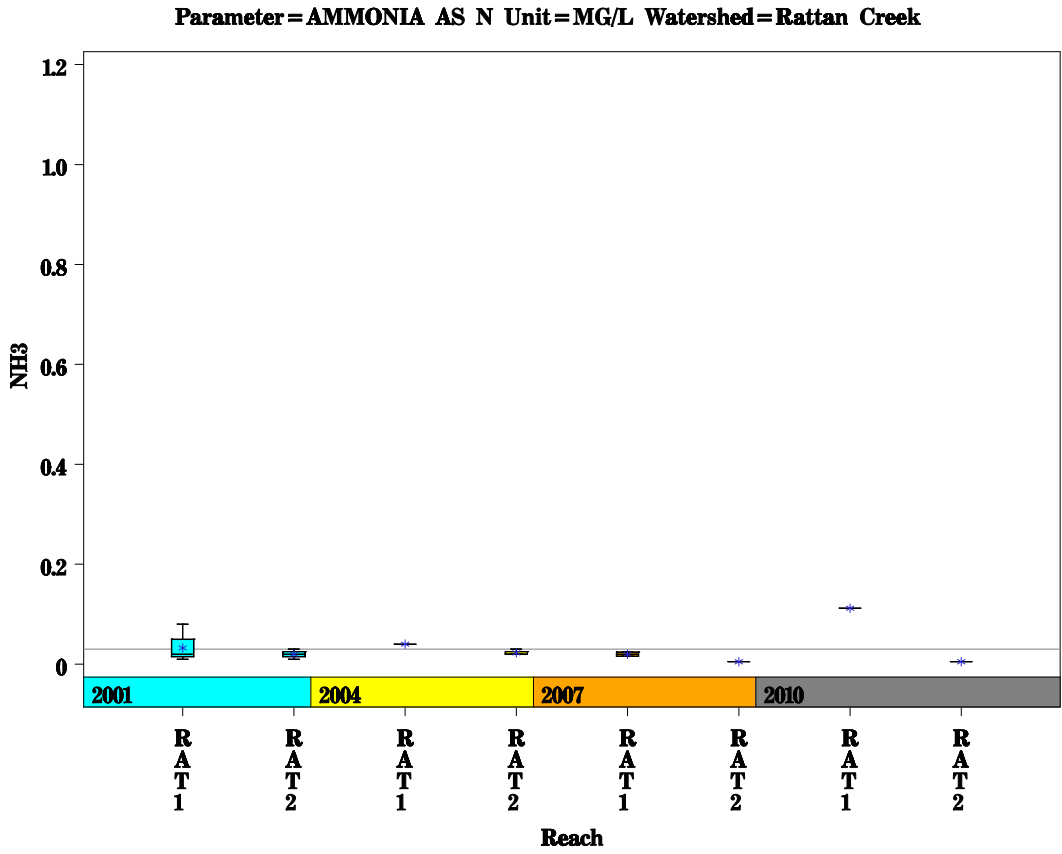
Rattan Creek Watershed

Data Summary Graphs – pH and Conductivity (Downstream to Upstream by Year)



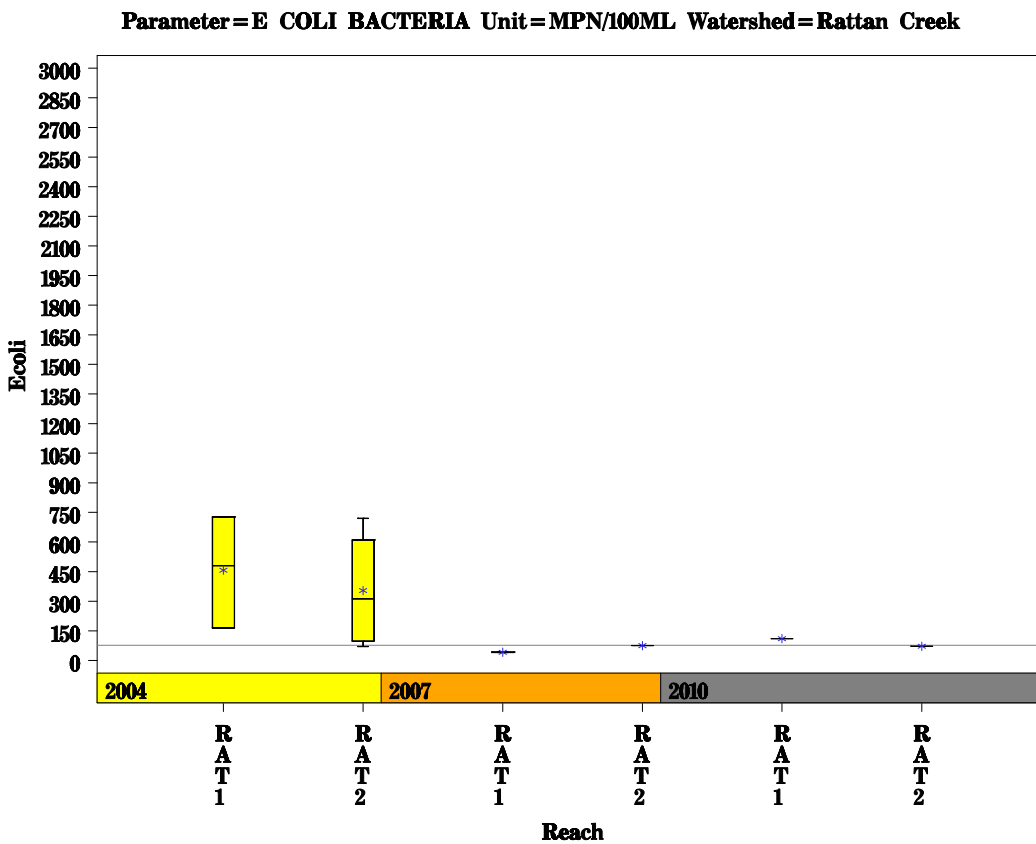
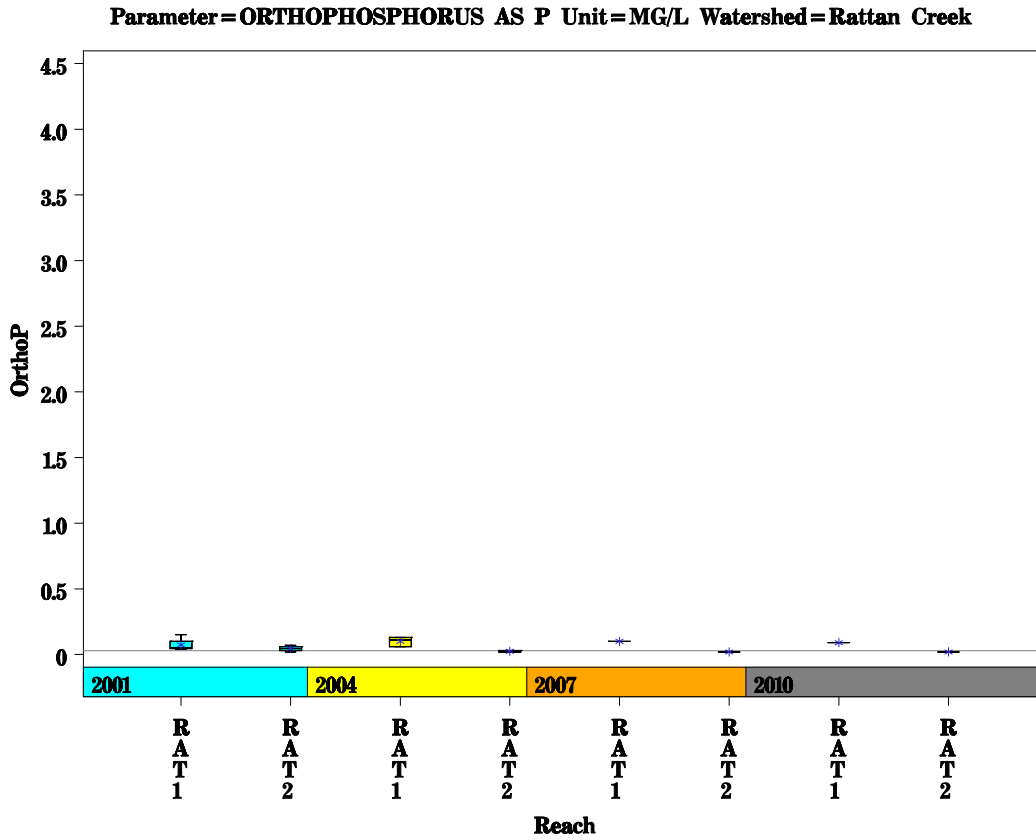
Rattan Creek Watershed

Data Summary Graphs – Ammonia and Nitrate/Nitrite (Downstream to Upstream by Year)



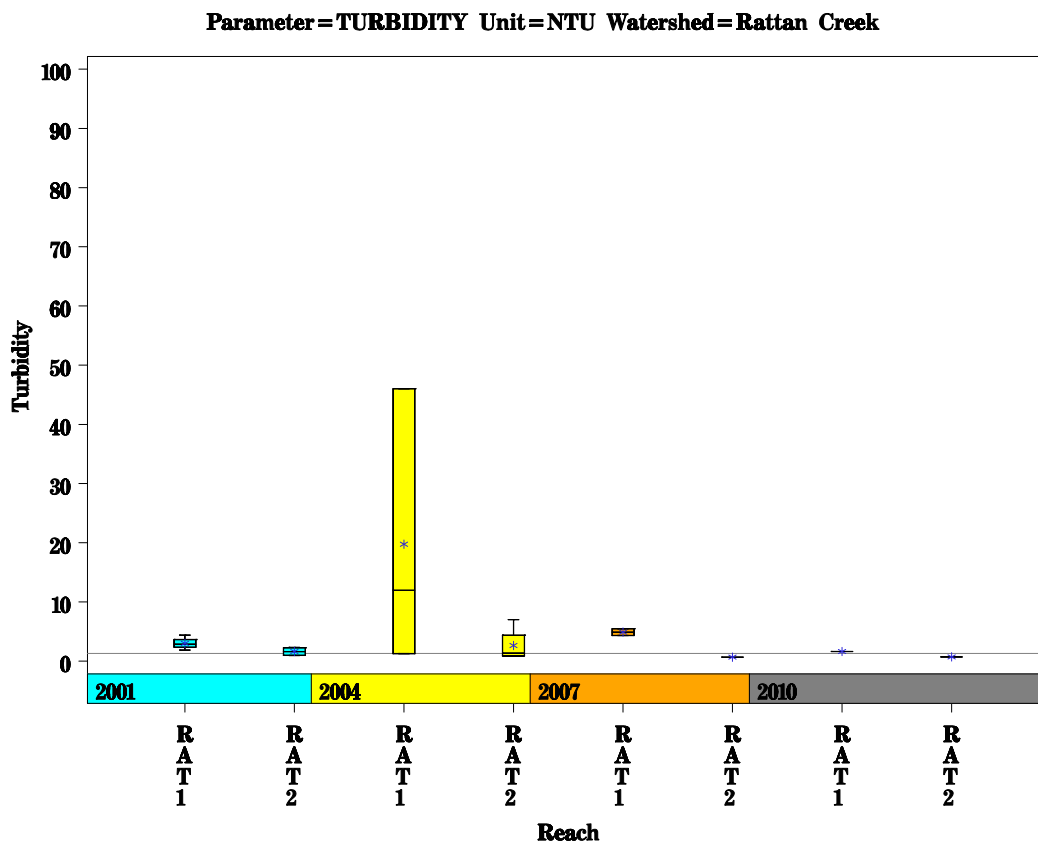
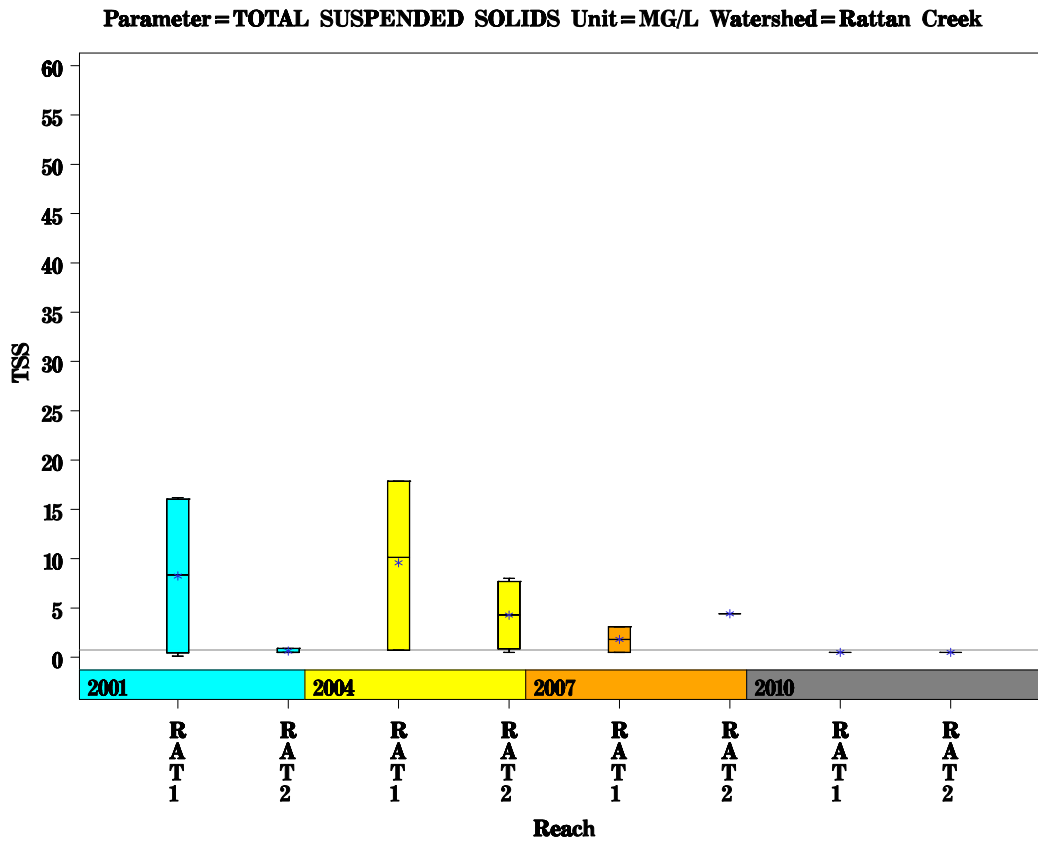
Rattan Creek Watershed

Data Summary Graphs – Orthophosphate and E.coli (Downstream to Upstream by Year)



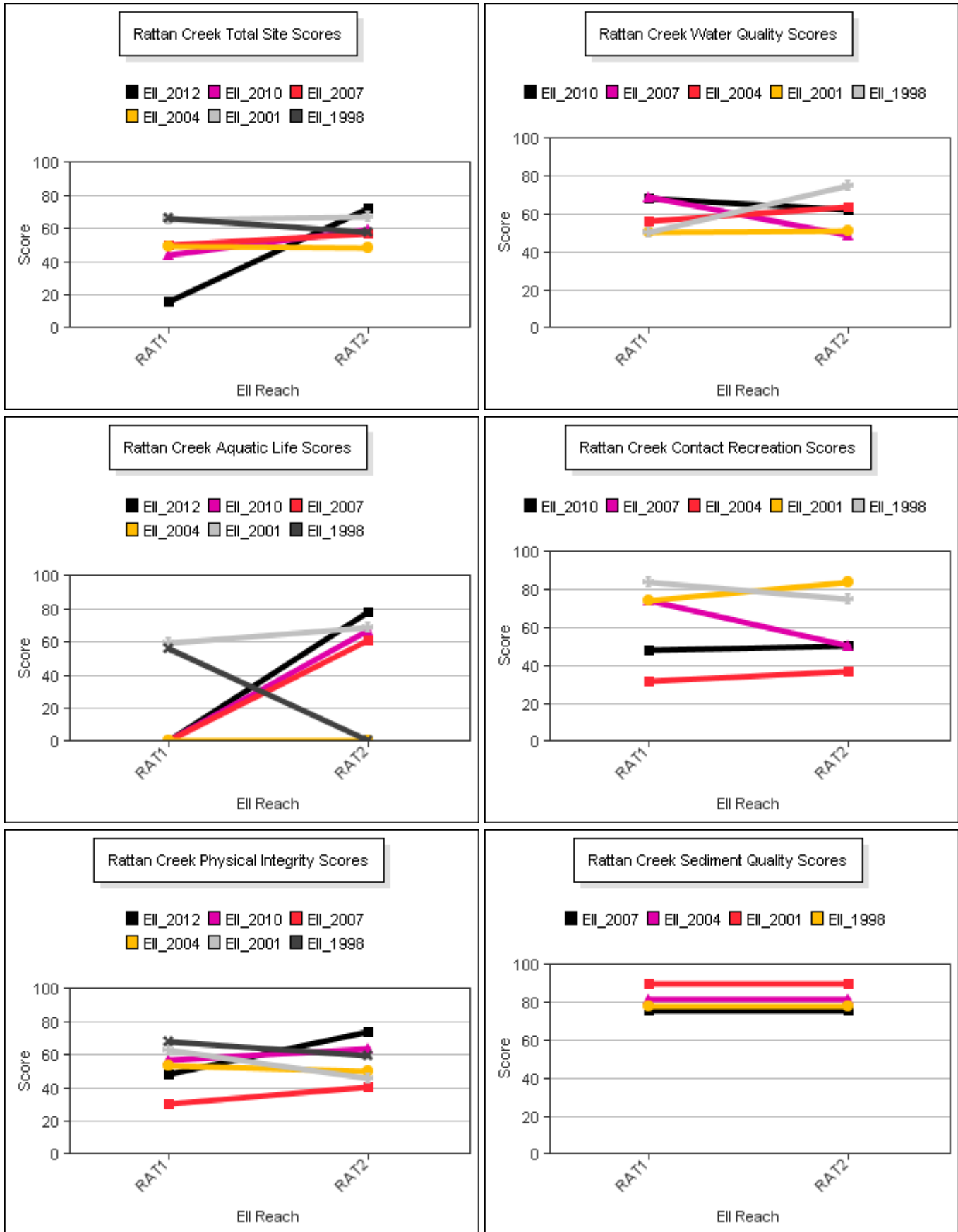
Rattan Creek Watershed

Data Summary Graphs – Total Suspended Solids and Turbidity (Downstream to Upstream by Year)



Rattan Creek Watershed

Score Summary – Reach scores for each sample year



Rattan Creek Watershed

Site Photographs



1009_us_06_19_2007



1009_ur_06_19_2007



1009_00-ds-05_24_2010



1009_00-ur-05_24_2010



1009_00-us-05_24_2010



1009_00-us-05_17_2010

Rattan Creek Watershed

Site Photographs



1097_us_06_19_2007



1097_ds_06_19_2007



1097_pool_06_19_2007



1097_ur_06_19_2007



1097_00-us-05_24_2010



1097_00-ds-05_24_2010

This page left intentionally blank