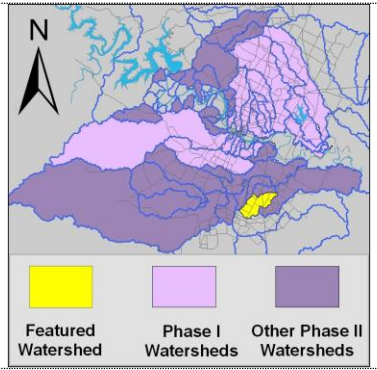


South Fork Dry Creek Watershed

Summary Sheet

Catchment	Total area	9 sq. miles				
	Area in recharge	0				
	Creek length	10 miles				
	Receiving water	Dry Creek				
Demographics	2000 population	1,276				
	2030 projected population	8,011				
	30 year projected % increase	628 %				
Land Use	Impervious cover (2003 estimate)	5.45 %				
Overall EII Scores	1999	2002	2005	2008	2010	2012
	51	59	50	58	66	59



Flow Regime* for Sample Sites on South Fork Dry Creek

* B = baseflow n = no flow storm = storm flow blue = Samples were taken grey = Samples were not taken blank = not visited

Site #	Site Name	2002					2005					2008					2010				2011		2012		
		Feb	Feb	May	Aug	Nov	Mar	Jun	Jun	Sep	Dec	Feb	May	Jun	Sep	Dec	Mar	May	May	Oct	Dec	Mar	May		
		WQ	Bio	WQ	WQ	WQ	WQ	WQ	Bio	WQ	WQ	WQ	WQ	Bio	WQ	WQ	WQ	WQ	Bio	WQ	WQ	WQ	WQ	Bio	
1214	Rodriguez	B	B	n	n	B																			
1215	US183	B	B	n	n	B	B	n	n	n	n	n	n	n	n	n	B	n	n	n	n	B	n		
1216	FM 812	B	B	n		B	B	B	n	n	B	B	B	n	B	B	B	B	S	B	B	B	B	B	

South Fork Dry Creek Watershed 2012 data summary table

Summary	Parameter	Mean	Max	Min	Discussion
Physicochemical	D.O. mg/l	7.5	8.8	5.4	Within normal range.
	pH st.units	8.09	8.49	7.67	Some elevated values at both sites.
	Cond uS/cm	620	761	445	Within normal range.
Nutrients	NH ₃ mg/l	0.016	0.025	0.008	Within normal range.
	NO ₃ mg/l	0.102	0.367	0.008	Within normal range.
	Ortho P mg/l	0.057	0.184	0.004	Within normal range.
Sediment Load	TSS mg/l	7.9	9.7	6.0	Above average, but within normal range.
	Turbidity ntu	4.51	5.21	3.80	Within normal range.
Biology	E.Coli /100ml	755	2420	44	High value at upstream site, downstream within normal range.
	Benthic Macroinvertebrates and Diatoms: evaluations are provided in the introduction of this report				

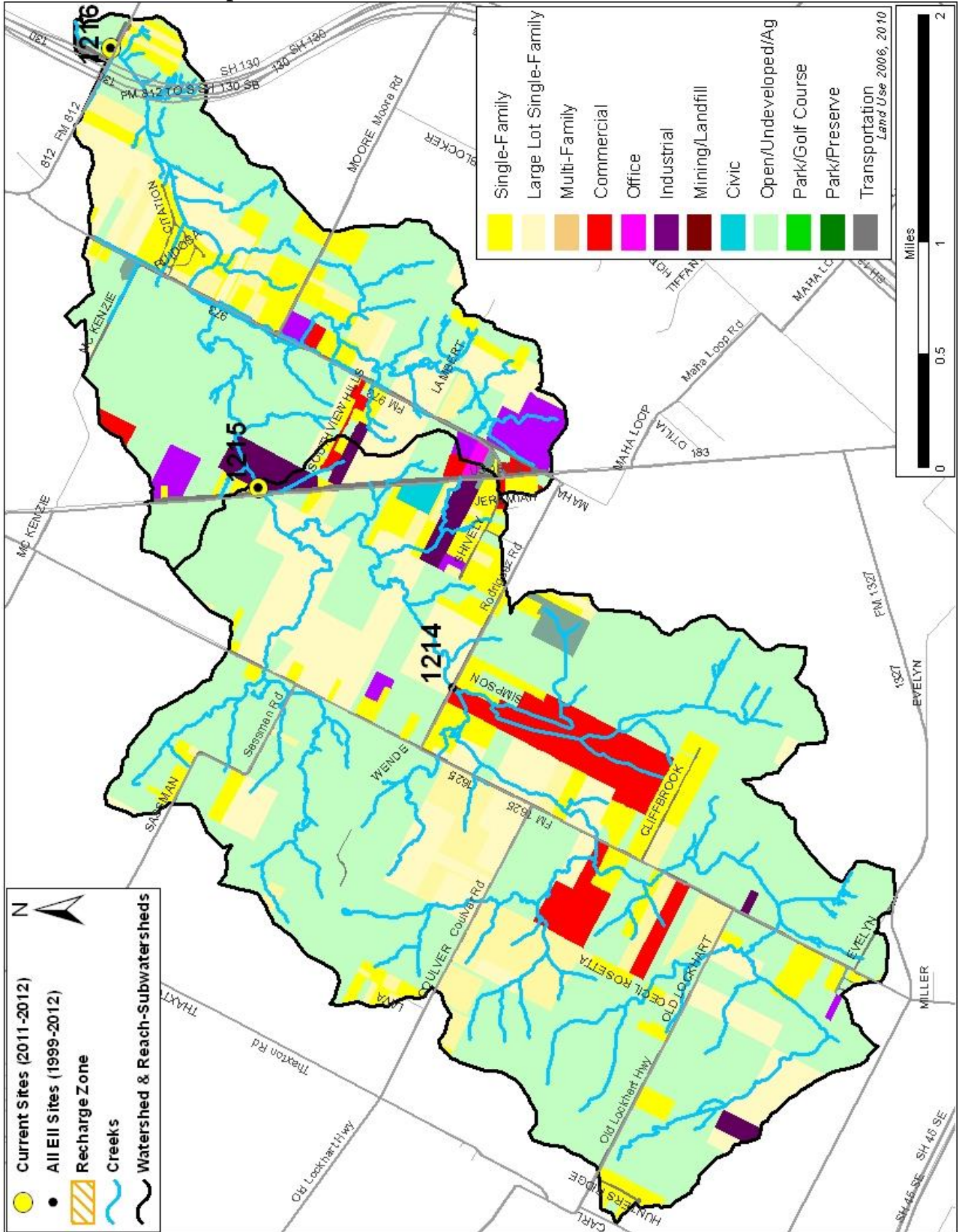
Index Scores* for South Fork Dry Creek Sites by Year

Reach	Site	Site Name	Year	Water Quality	Sediment**	Contact Rec.	Non-Contact Rec.	Physical Integrity	Aquatic Life	Benthic subindex	Diatom subindex	Total EII Score
SFD1	1216	South Fork Dry Creek @ FM812	1999	38	68	57	49	48				43
SFD2	1214	South Fork Dry Creek @ Rodriguez Rd	1999	69	68	98	43	55				56
SFD2	1215	South Fork Dry Creek @ US183	1999	60	68	96	54	45				54
SFD1	1216	South Fork Dry Creek @ FM812	2002	33	82	72	74	33	31	33	28	54
SFD2	1214	South Fork Dry Creek @ Rodriguez Rd	2002	64	82	96	73	29	19	37		60
SFD2	1215	South Fork Dry Creek @ US183	2002	61	82	86	67	28	53	49	57	63
SFD1	1216	South Fork Dry Creek @ FM812	2005	40	85	55	49	47				46
SFD2	1215	South Fork Dry Creek @ US183	2005	61	85	82	62	24				52
SFD1	1216	South Fork Dry Creek @ FM812	2008	53	78	53	49	53	63	63		58
SFD2	1215	South Fork Dry Creek @ US183	2008		78		48	55	57	57		60
SFD1	1216	South Fork Dry Creek @ FM812	2010	61	79	70	66	53	69	69		66
SFD2	1215	South Fork Dry Creek @ US183	2010	70	79	68	66	52	57	43	71	65
SFD1	1216	South Fork Dry Creek @ FM812	2012	56	79	49	51	44	73	85	60	59
SFD2	1215	South Fork Dry Creek @ US183	2012	66	79	24	58	51	76	65	86	59

* blank cells indicate parameter was not collected, blank row indicate site was dropped **sediment samples only collected at the downstream site
 100-87.5 Excellent 87.5-75 V. Good 75-62.5 Good 62.5-50 Fair 50-37.5 Marginal 37.5-25 Poor 25-12.5 Bad 12.5-0 V. Bad

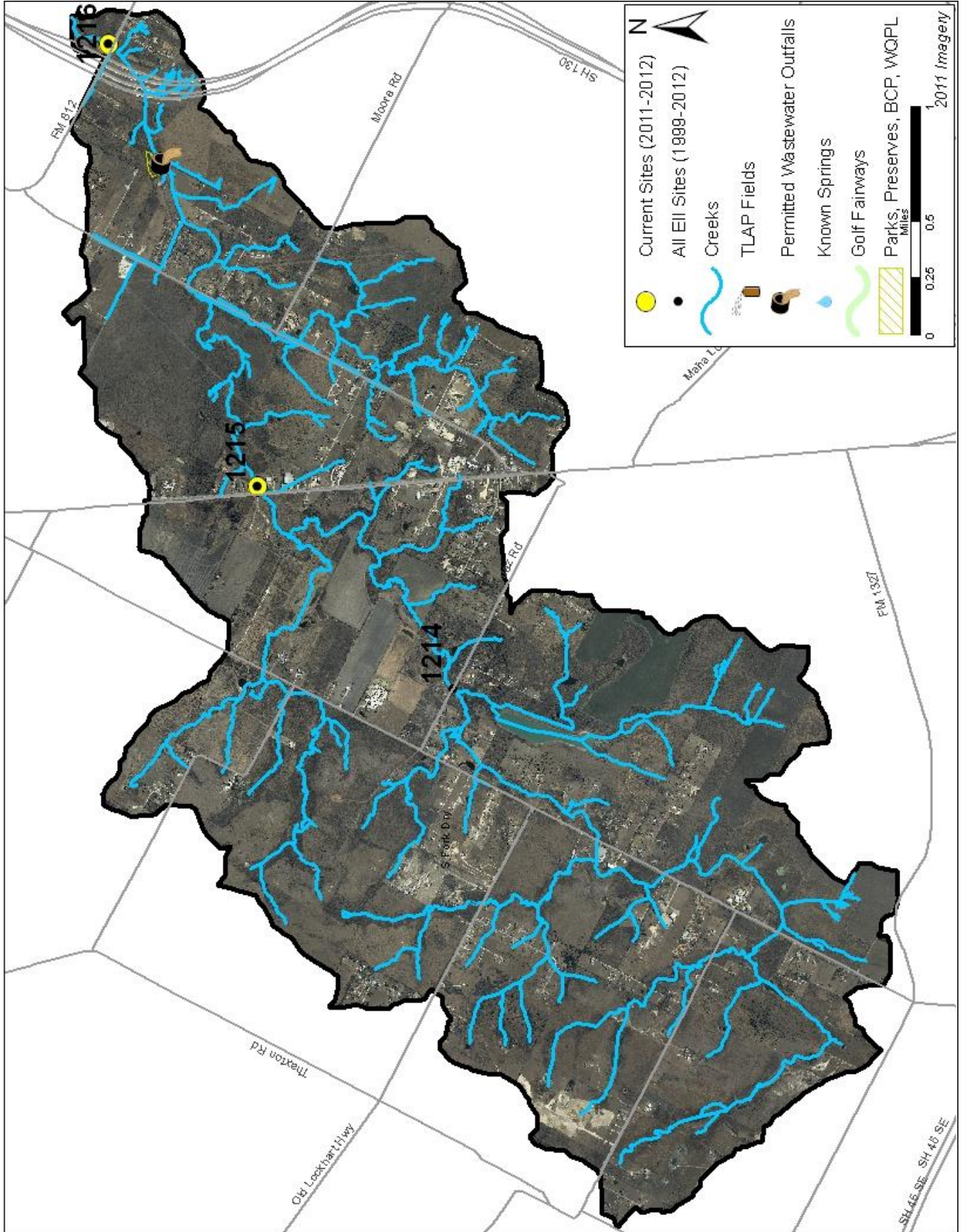
South Fork Dry Creek Watershed

Land Use Map



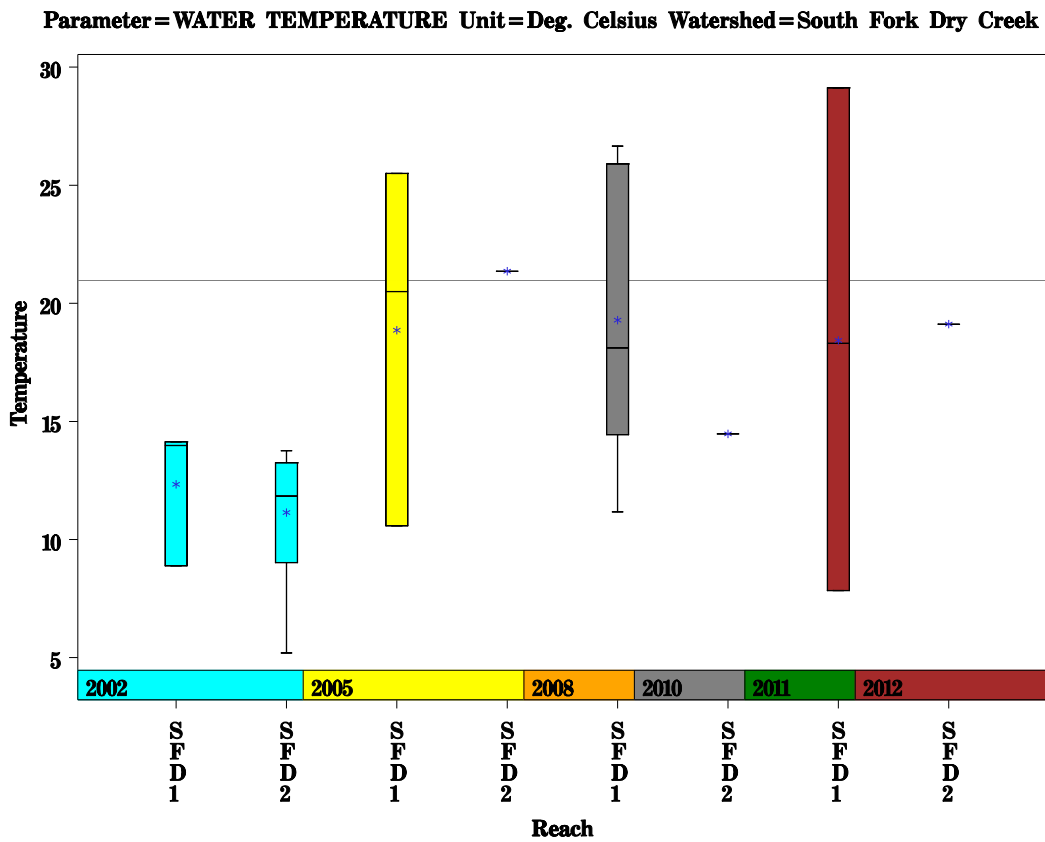
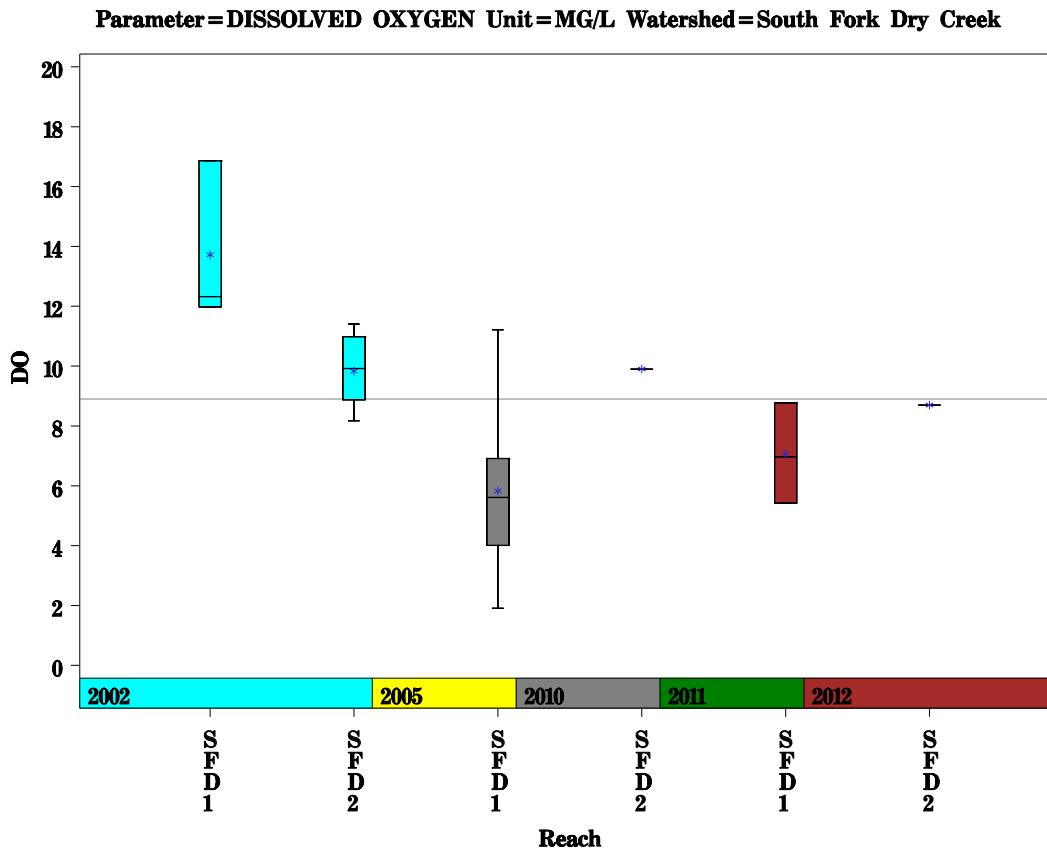
South Fork Dry Creek Watershed

Aerial Map



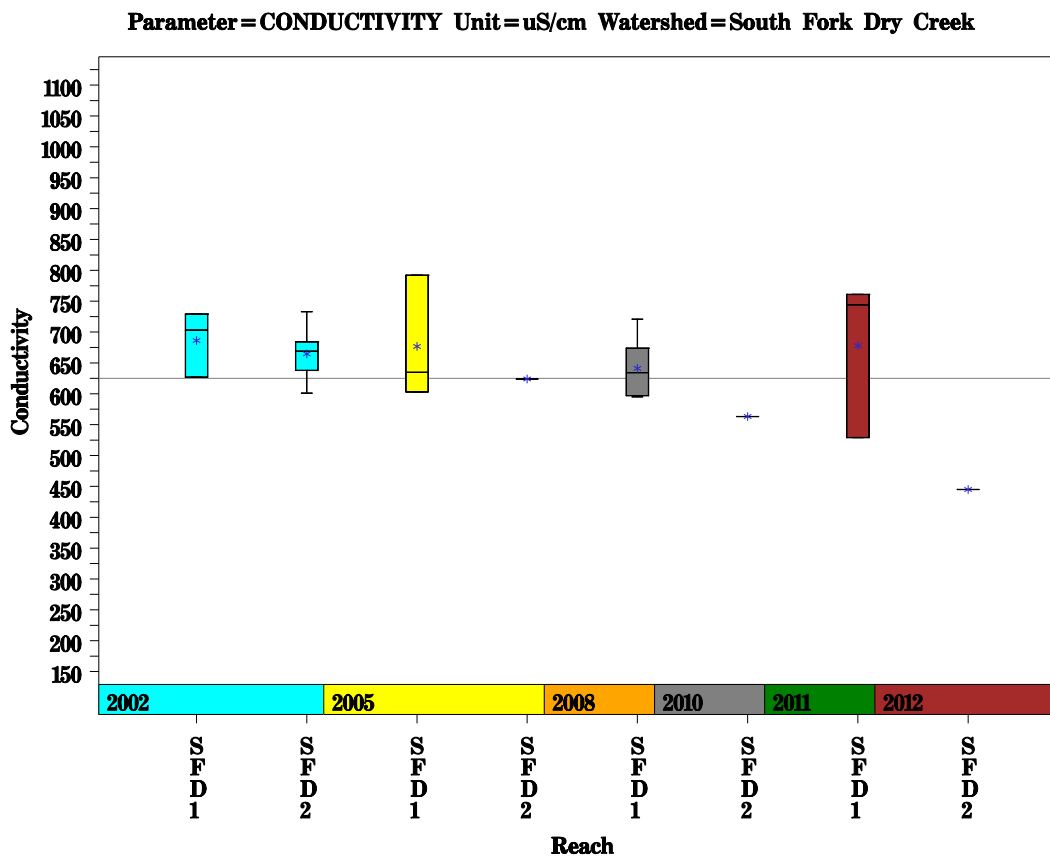
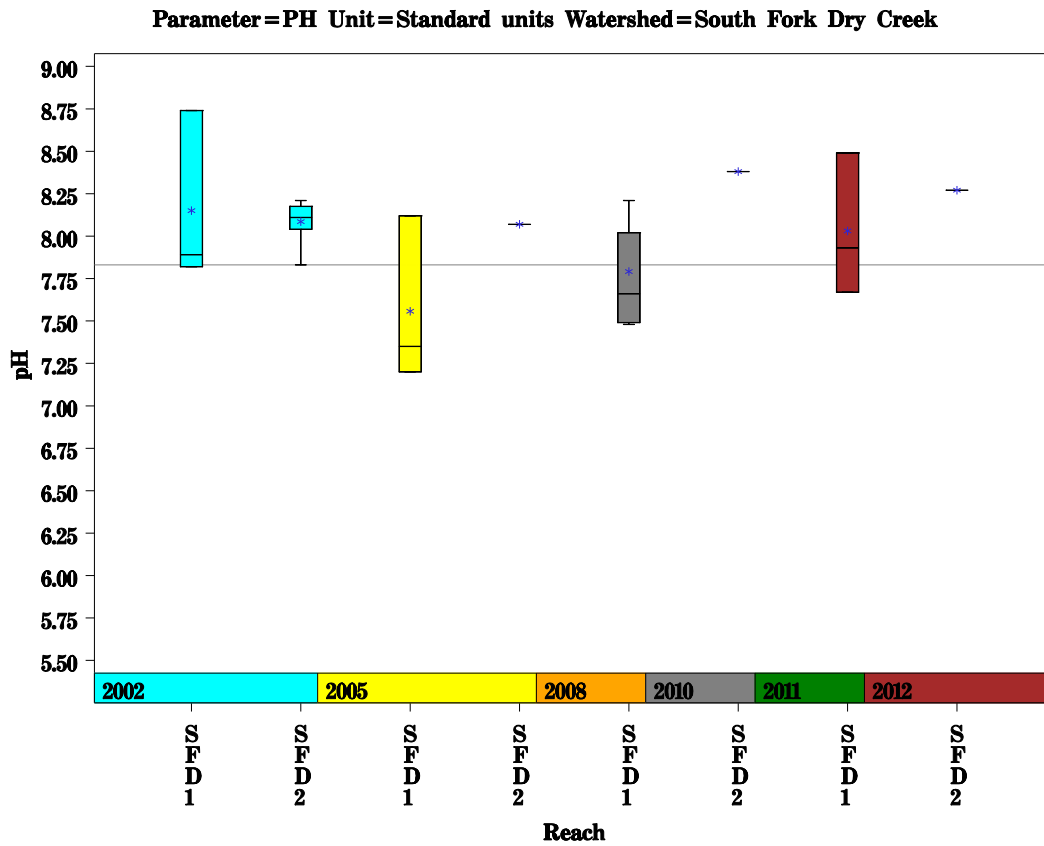
South Fork Dry Creek Watershed

Data Summary Graphs – Dissolved Oxygen and Temperature (Downstream to Upstream by Year)



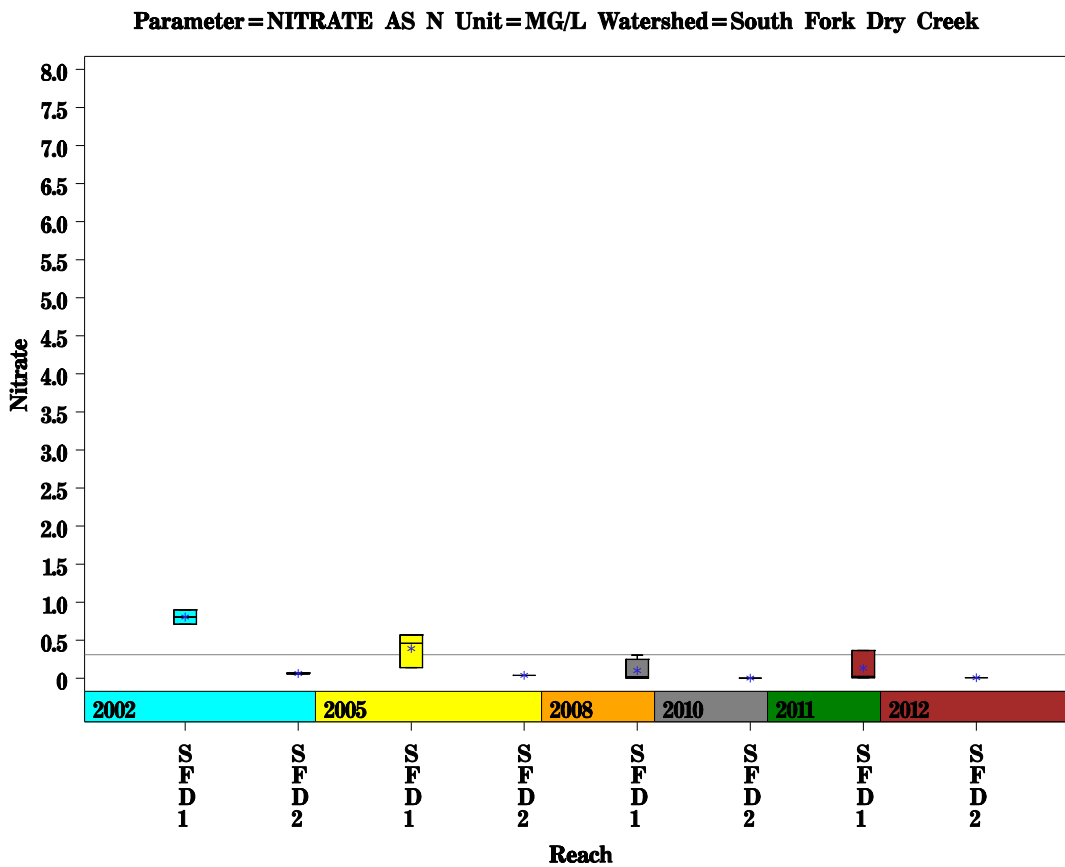
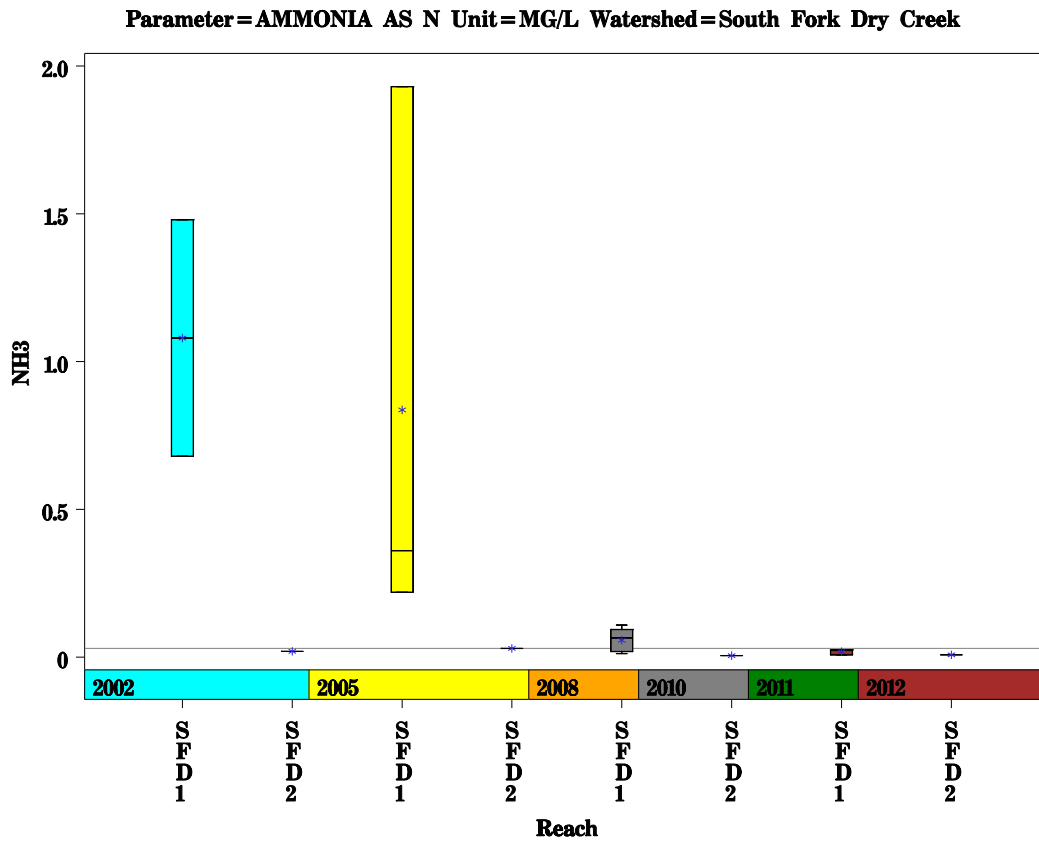
South Fork Dry Creek Watershed

Data Summary Graphs – pH and Conductivity (Downstream to Upstream by Year)



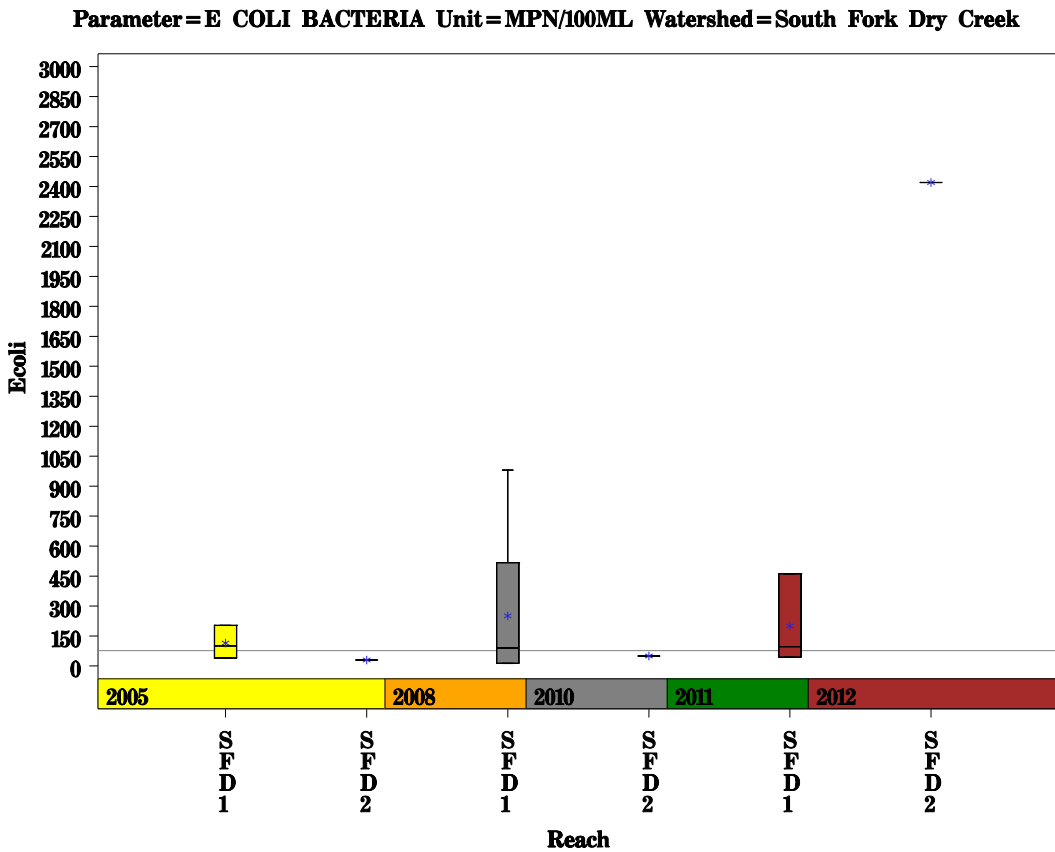
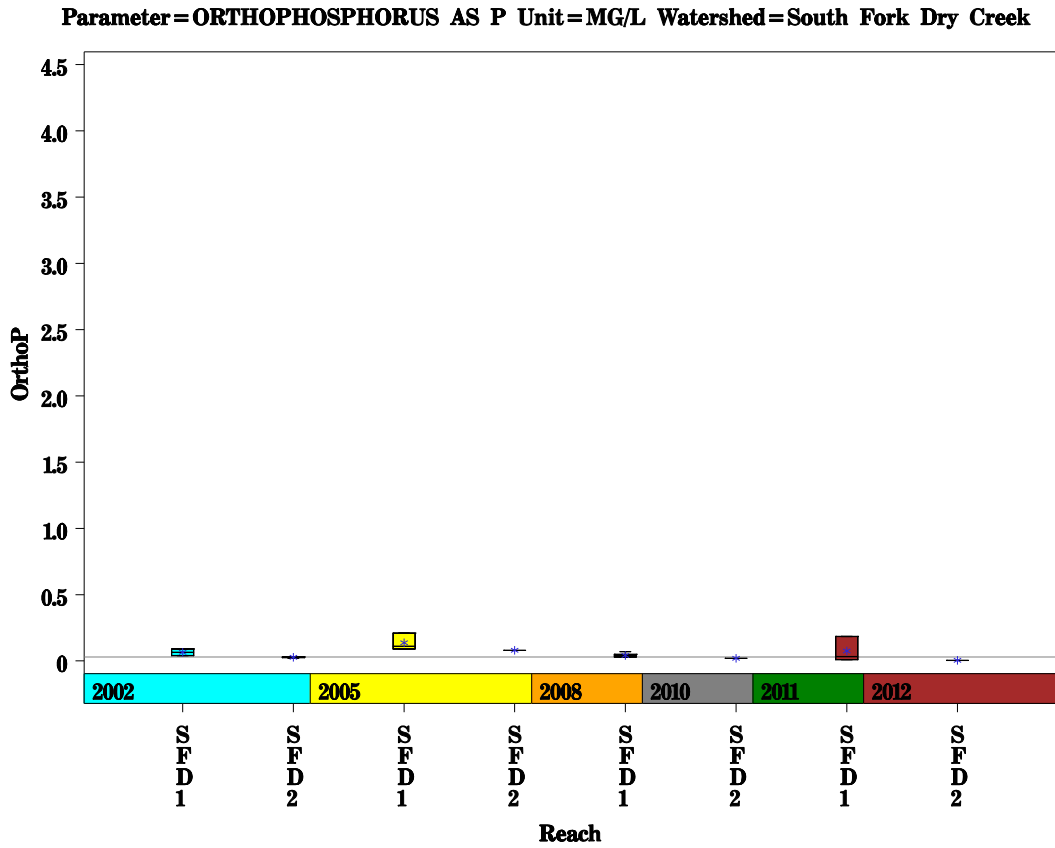
South Fork Dry Creek Watershed

Data Summary Graphs – Ammonia and Nitrate/Nitrite (Downstream to Upstream by Year)



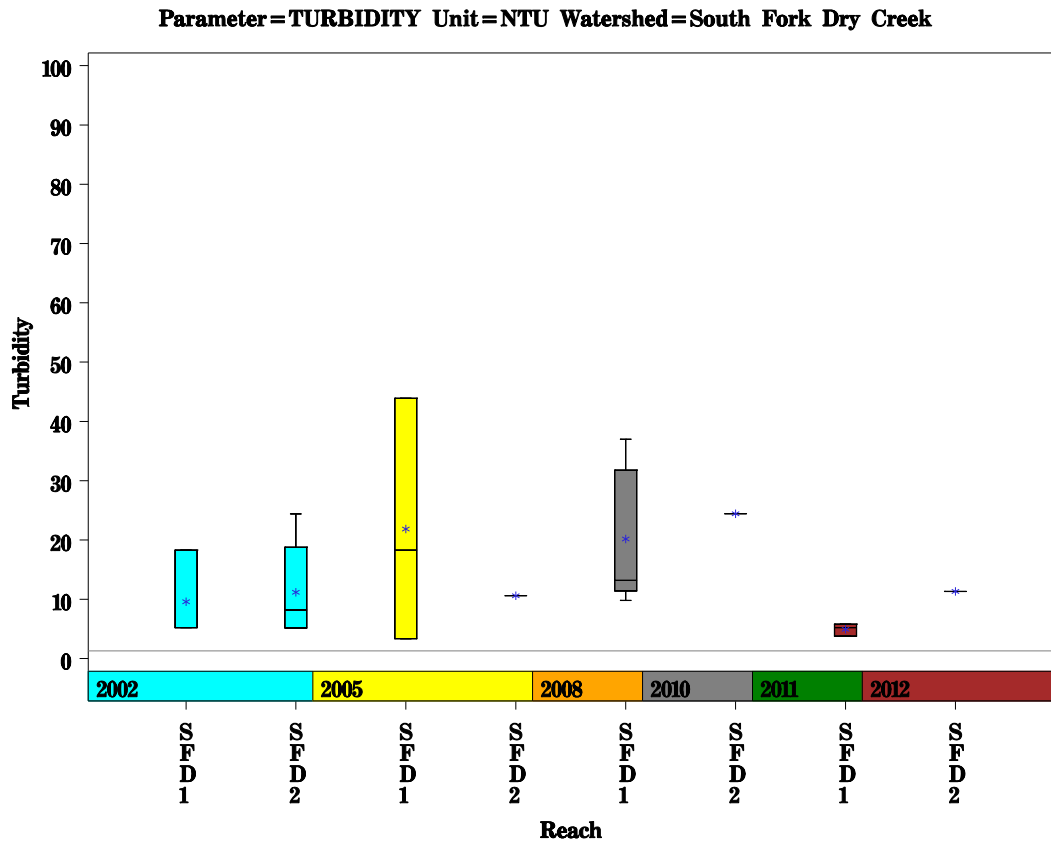
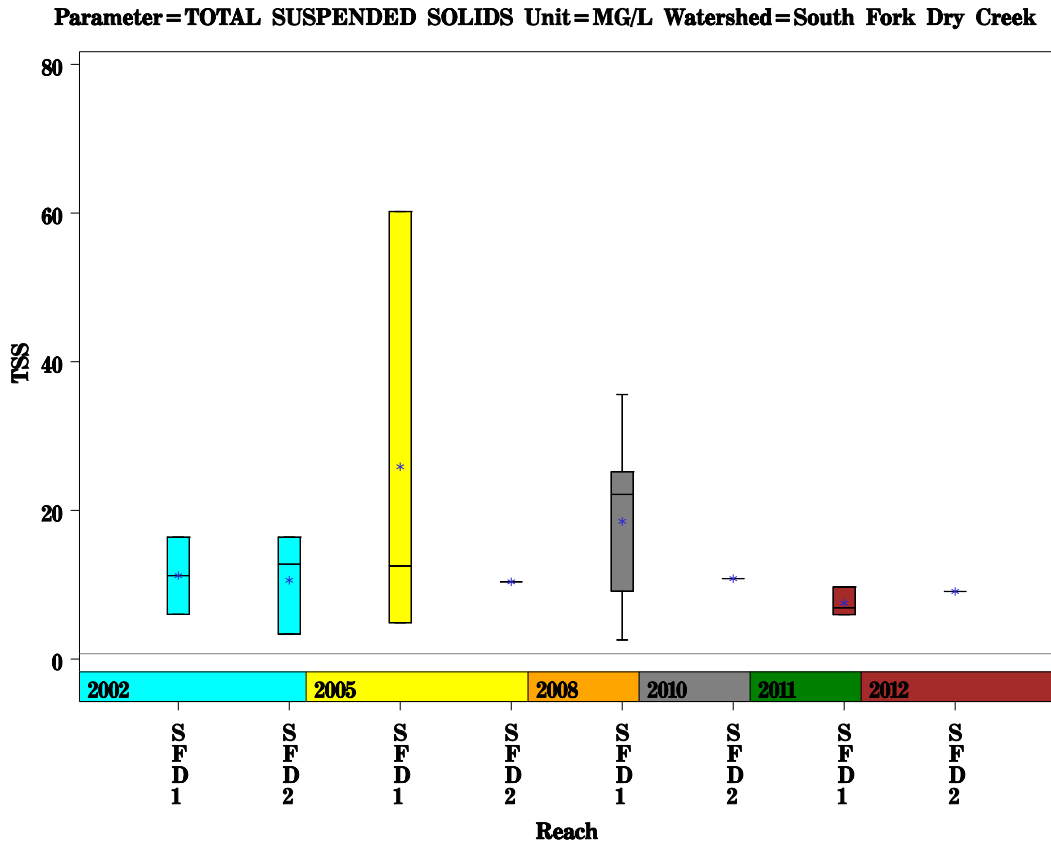
South Fork Dry Creek Watershed

Data Summary Graphs – Orthophosphate and E.coli (Downstream to Upstream by Year)



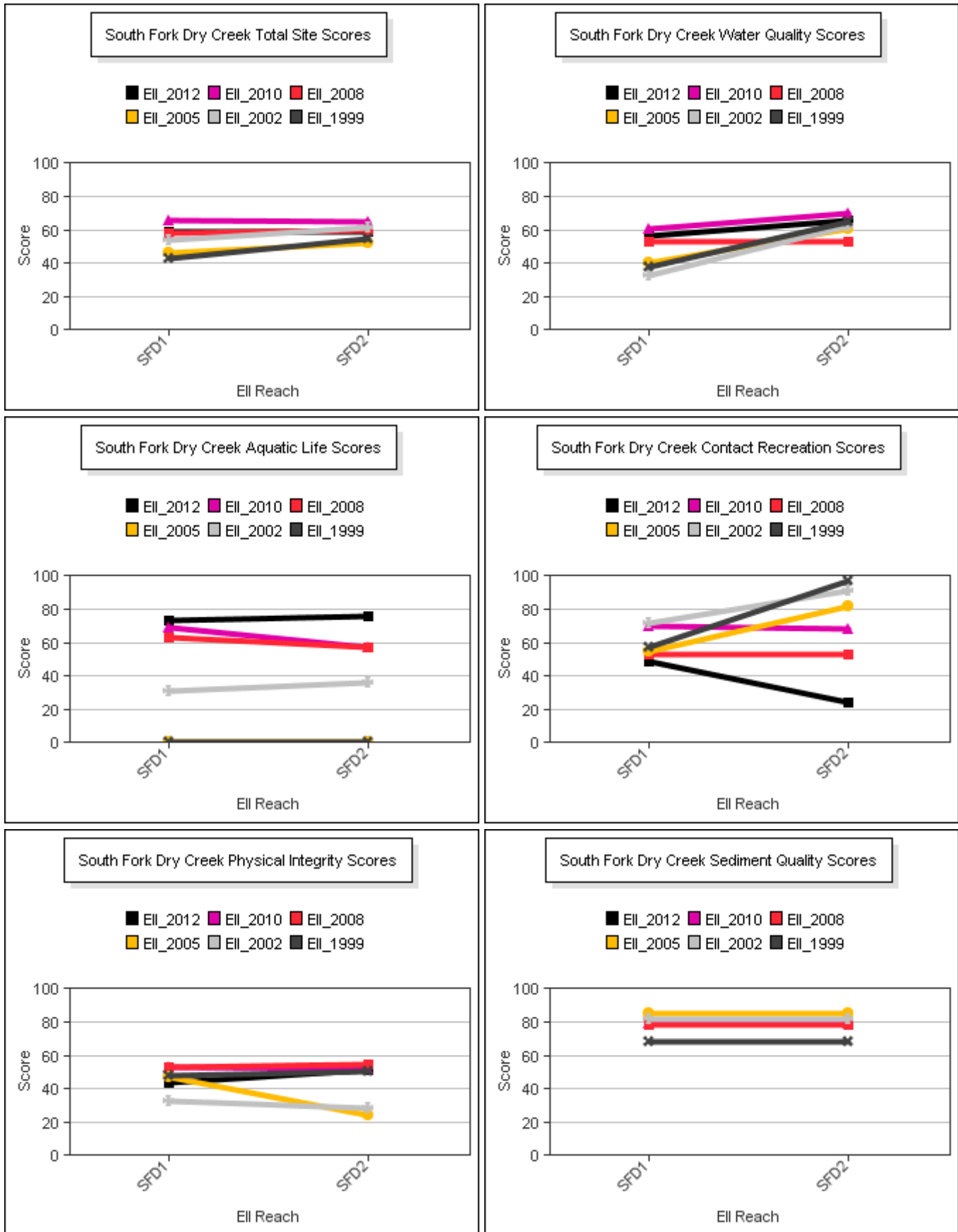
South Fork Dry Creek Watershed

Data Summary Graphs – Total Suspended Solids and Turbidity (Downstream to Upstream by Year)



South Fork Dry Creek Watershed

Score Summary – Reach scores for each sample year



South Fork Dry Creek Watershed

Site Photographs



1214_t00-us1-06_21_2000



1214_t00-us-02_27_2002



1215_t00-ur-02_27_2002



1215_t00-ur-06_15_2005



1215_t00-ds-06_15_2005



1215_00-ur-05_19_2010

South Fork Dry Creek Watershed

Site Photographs



1216_t00-ur-02_27_2002



1216_t00-us-02_27_2002



1216_t00-ds-06_16_2005



1216_t0-na-06_17_2008



1216_00-ds-05_18_2010



1216_00-us-05_18_2010

This page left intentionally blank