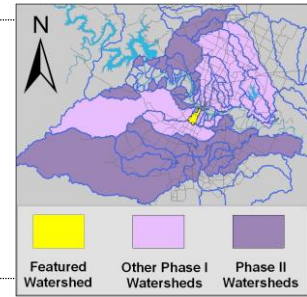


West Bouldin Creek Watershed

Summary Sheet

Catchment	Total area	3 square miles				
	Area in recharge	none				
	Creek length	4 miles				
	Receiving water	Town lake				
Demographics	2000 population	16,951				
	2030 projected population	19,337				
	30 year projected % increase	14 %				
Land Use	Impervious cover (2003 estimate)	45.85 %				
Overall EII Scores	2000	2003	2006	2009	2011	
	54	53	56	55	50	



Flow Regime* for Sample Sites on West Bouldin Creek Upstream to Downstream

Site #	Site Name	2003						2006					2009				2010	2011							
		Feb	Mar	Mar	May	Sep	Dec	Feb	May	Jul	Aug	Nov	Feb	May	Jun	Oct	Dec	Dec	Mar	Jun	Jun	Sep			
		WQ	WQ	Bio	WQ	WQ	WQ	WQ	WQ	Bio	WQ	WQ	WQ	WQ	Bio	WQ	WQ	WQ	WQ	WQ	Bio	WQ			
846	S Austin Pk	B	B	B	n	n	n																		
3856	Cardinal							B	B	B	n	n	B	B	B	B	B	B	B	n	n	n			
845	Guerrero Pk	B	B	B	n	n	n																		
878	Jewell	B	B	B	B	B	B																		
3854	Oltorf							B	B	B	B	B	B	B	B	S	B	B	B	B	B	B	B	B	B
2794	Post Oak	n	B	B	n	n	n	n	n	n	n	n	n	n	n	n	n	n	n	n	n	n	n	n	n

* B = baseflow n = no flow S = storm flow blue = Samples were taken grey = Samples were not taken blank = not visited

Summary of 2011 Data for West Bouldin Creek

Summary	Parameter	Mean	Max	Min	Discussion
Physicochemical	D.O. mg/l	9.4	12.9	4.2	Wide range, several elevated readings, some low readings.
	pH st.units	7.94	8.36	7.13	Mostly within normal range, some elevated and some low values.
	Cond uS/cm	610	820	386	Within normal range, higher upstream.
Nutrients	NH ₃ mg/l	0.040	0.112	0.008	Mostly within normal range with high reading at site 3854, increases downstream.
	NO ₃ mg/l	0.216	0.431	0.008	Within normal range, concentrations increase downstream.
	Ortho P mg/l	0.130	0.23	0.07	Within normal range, above average readings downstream.
Sediment Load	TSS mg/l	1.1	1.8	0.3	Within normal range.
	Turbidity ntu	5.44	12.26	1.54	Wide range, some elevated values at site 3854.
Biology	E.Coli /100ml	788	2420	11	Wide range, high reading at site 3854.
	Benthic Macroinvertebrates and Diatoms: evaluations are provided in the introduction of this report				

Index Scores* for West Bouldin Creek Sites by Year

Reach	Site	Site Name	Year	Water Quality	Sediment**	Contact Rec.	Non-Contact Rec.	Physical Integrity	Aquatic Life	Benthic Subindex	Diatom Subindex	Total EII Score
WBO1	486	West Bouldin Creek @ Riverside Dr	1996		53		55	42				38
WBO2	845	West Bouldin Creek @ Guerrero Park	1996		53		45	51				37
WBO2	878	West Bouldin Creek @ Jewell	1996	76	53	87	72	47	31	37	24	61
WBO3	846	West Bouldin Creek @ S. Austin Park	1996		53		63	64				45
WBO1	486	West Bouldin Creek @ Riverside Dr	2000		80		40	19				35
WBO2	845	West Bouldin Creek @ Guerrero Park	2000	75	80	95	52	30	26	25	26	60
WBO2	878	West Bouldin Creek @ Jewell	2000	67	80	73	38	34	28	29	26	53
WBO3	846	West Bouldin Creek @ S. Austin Park	2000	60	80	76	46	44	31	25	36	56
WBO1	2794	West Bouldin @ Post Oak	2003		57		73	74	28	26	29	58
WBO2	845	West Bouldin Creek @ Guerrero Park	2003	56	57	25	80	44	29	26	31	49
WBO2	878	West Bouldin Creek @ Jewell	2003	69	57	83	58	40	31	27	34	56
WBO3	846	West Bouldin Creek @ S. Austin Park	2003	38	57	54	66	52	24	18	29	49
WBO1	2794	West Bouldin @ Post Oak	2006		52		62	75				47
WBO2	3854	West Bouldin Creek @ Oltorf Street	2006	58	52	48	77	52	69	82	56	59
WBO3	3856	West Bouldin @ Cardinal	2006	55	52	54	76	55	55	35	74	58
WBO1	2794	West Bouldin @ Post Oak	2009		70		45	65				45
WBO2	3854	West Bouldin Creek @ Oltorf Street	2009	58	70	28	73	51	77	66	88	60
WBO3	3856	West Bouldin @ Cardinal	2009	59	70	40	73	56	61	22	99	60
WBO1	2794	West Bouldin @ Post Oak	2011				43	49				31
WBO2	3854	West Bouldin Creek @ Oltorf Street	2011	56		28	67	59	54	43	65	53
WBO3	3856	West Bouldin @ Cardinal	2011	65		86	57	57				53

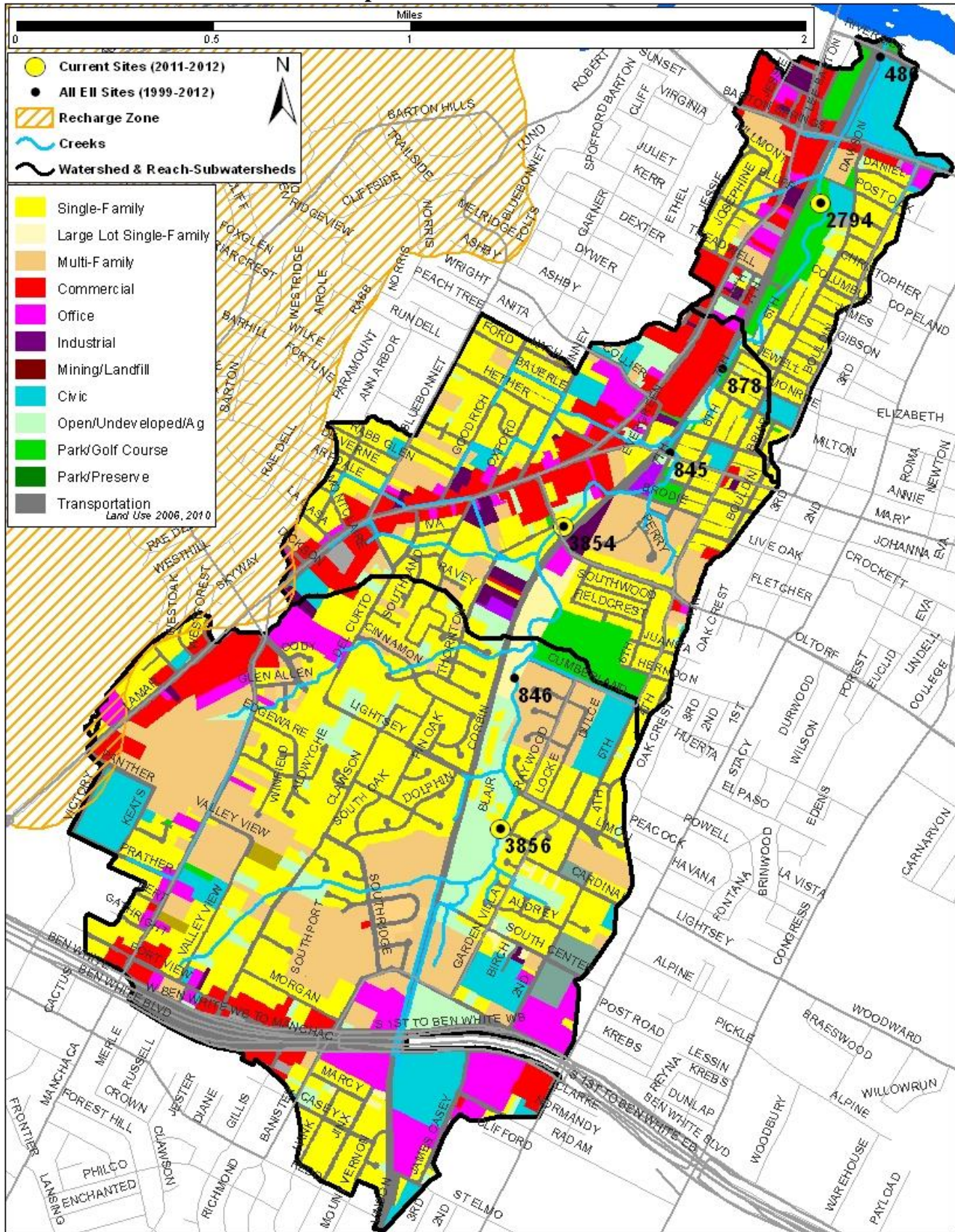
* blank cells indicate parameter was not collected, blank row indicate site was dropped

**sediment samples only collected at the downstream site

100-87.5 Excellent 87.5-75 V. Good 75-62.5 Good 62.5-50 Fair 50-37.5 Marginal 37.5-25 Poor 25-12.5 Bad 12.5-0 V. Bad

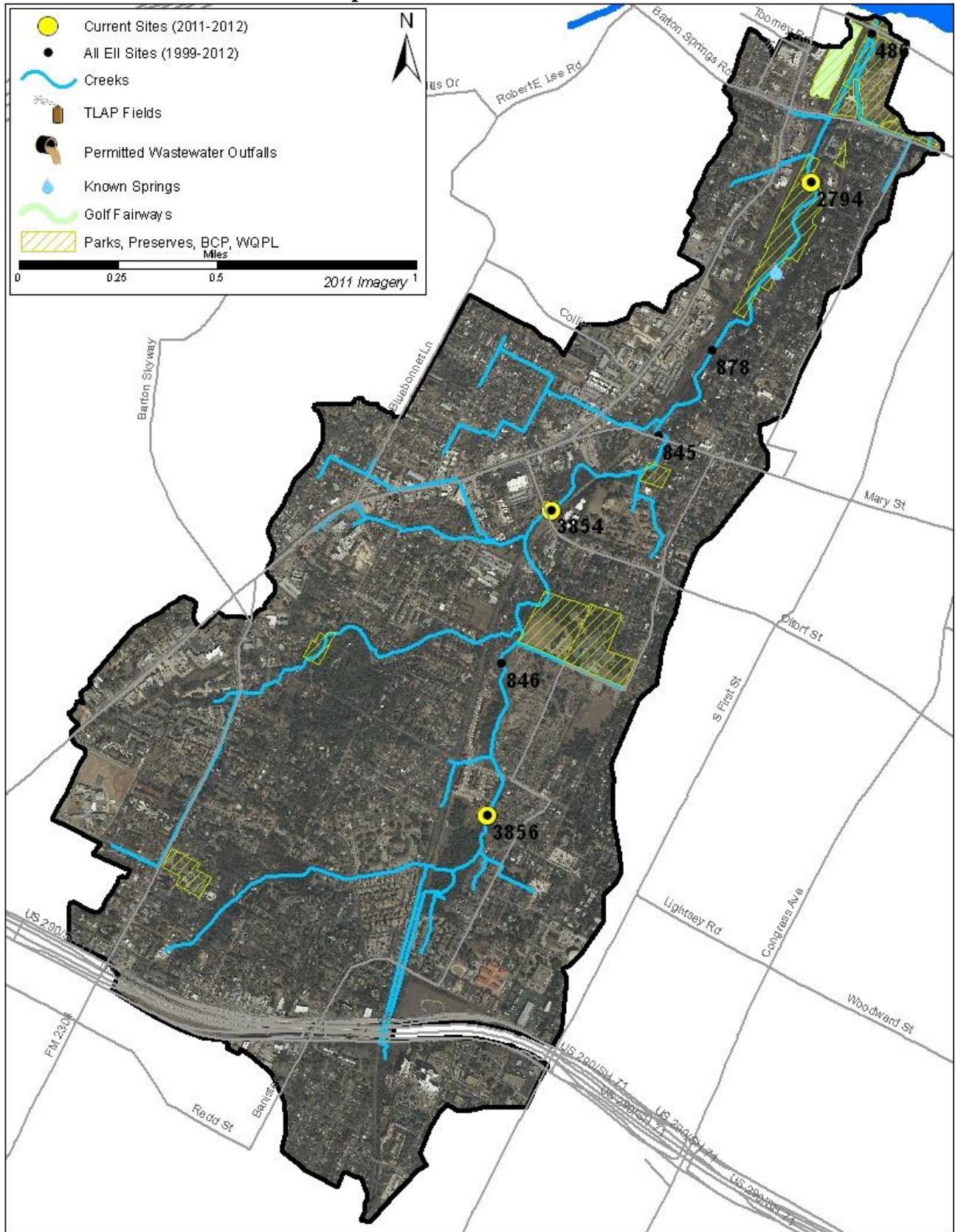
West Bouldin Creek Watershed

Land Use Map



West Bouldin Creek Watershed

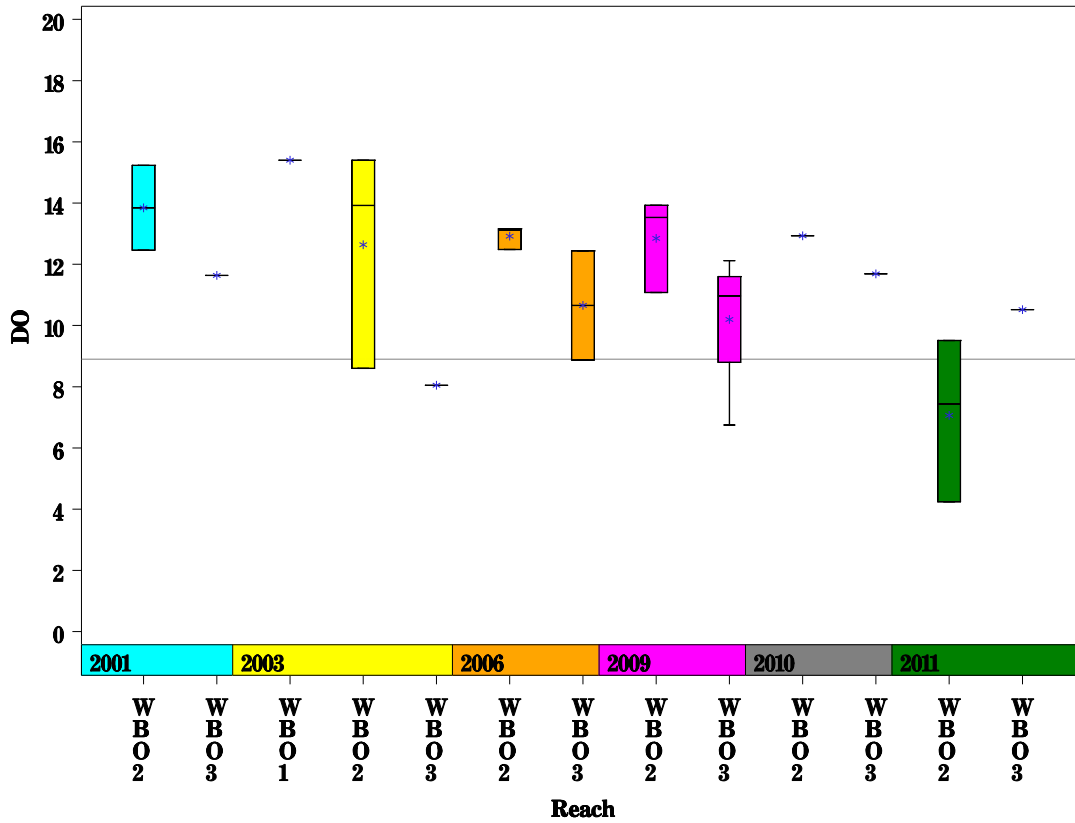
Aerial Map



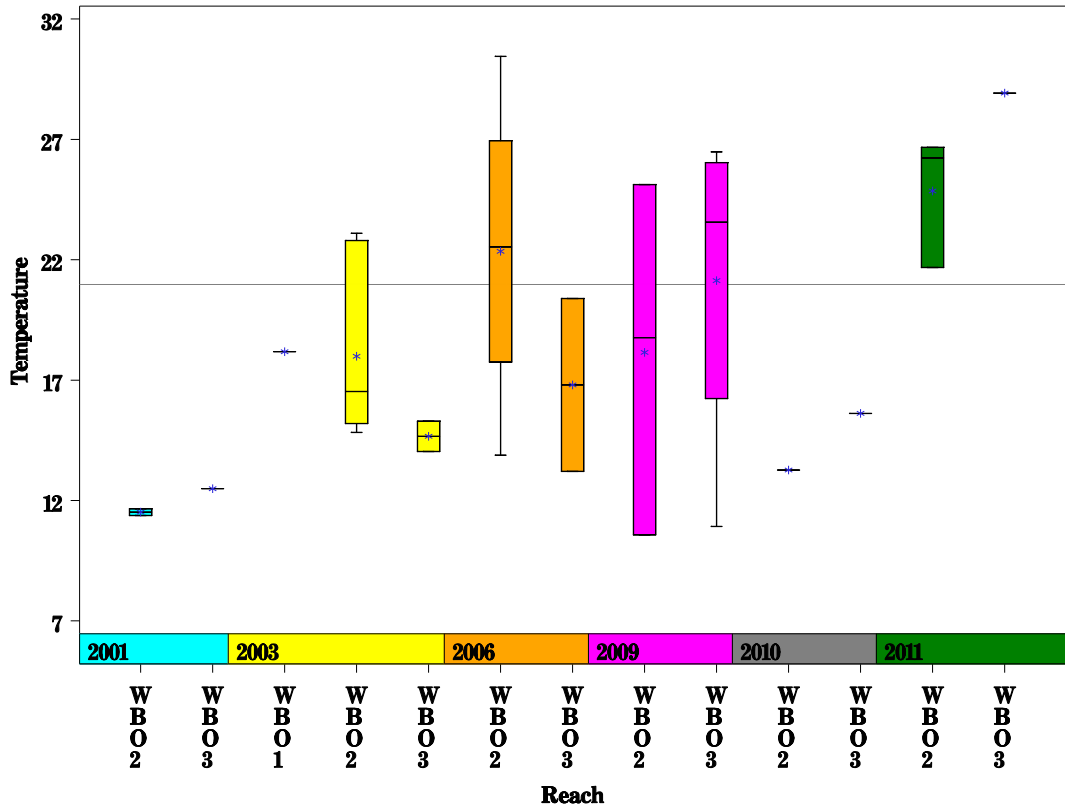
West Bouldin Creek Watershed

Data Summary Graphs – Dissolved Oxygen and Temperature (Downstream to Upstream by Year)

Parameter=DISSOLVED OXYGEN Unit=MG/L Watershed=West Bouldin Creek



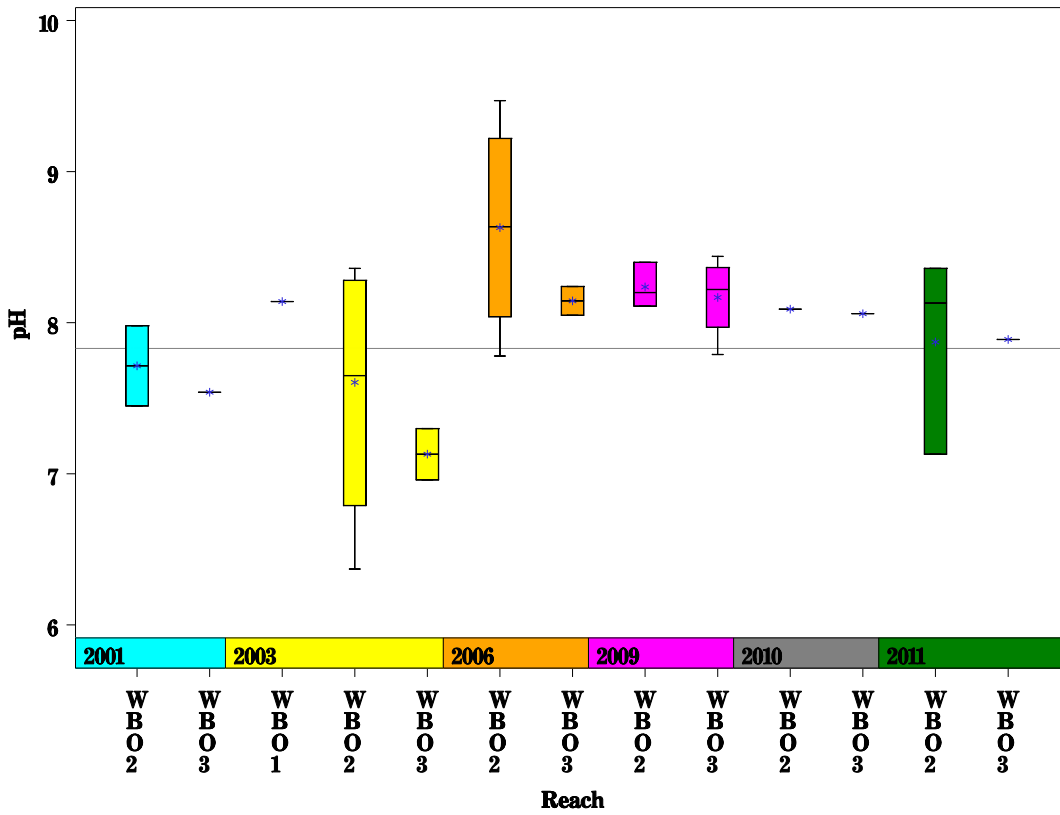
Parameter=WATER TEMPERATURE Unit=Deg. Celsius Watershed=West Bouldin Creek



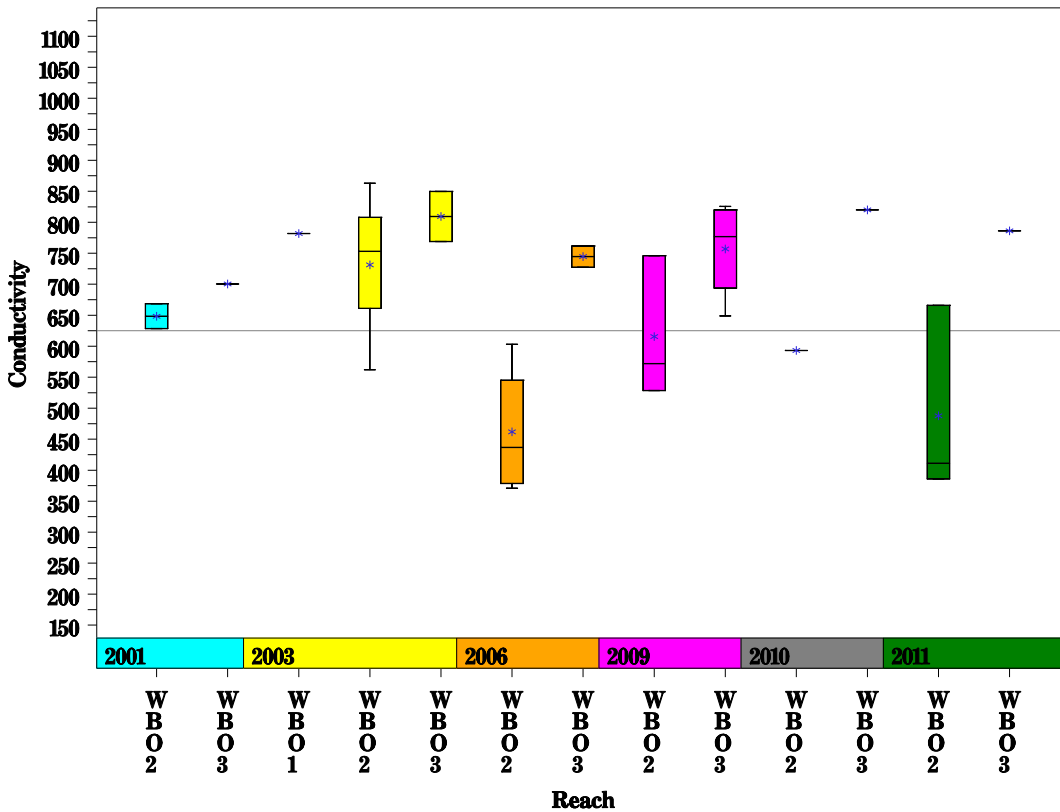
West Bouldin Creek Watershed

Data Summary Graphs – pH and Conductivity (Downstream to Upstream by Year)

Parameter=PH Unit=Standard units Watershed=West Bouldin Creek



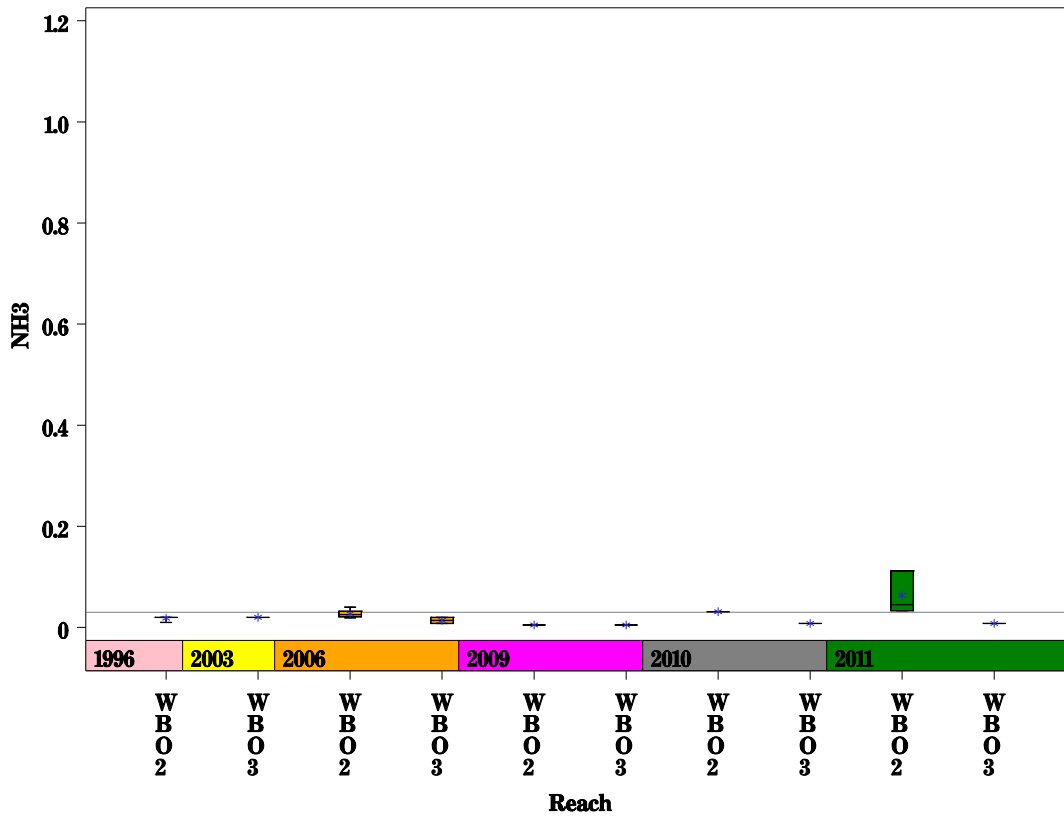
Parameter=CONDUCTIVITY Unit=uS/cm Watershed=West Bouldin Creek



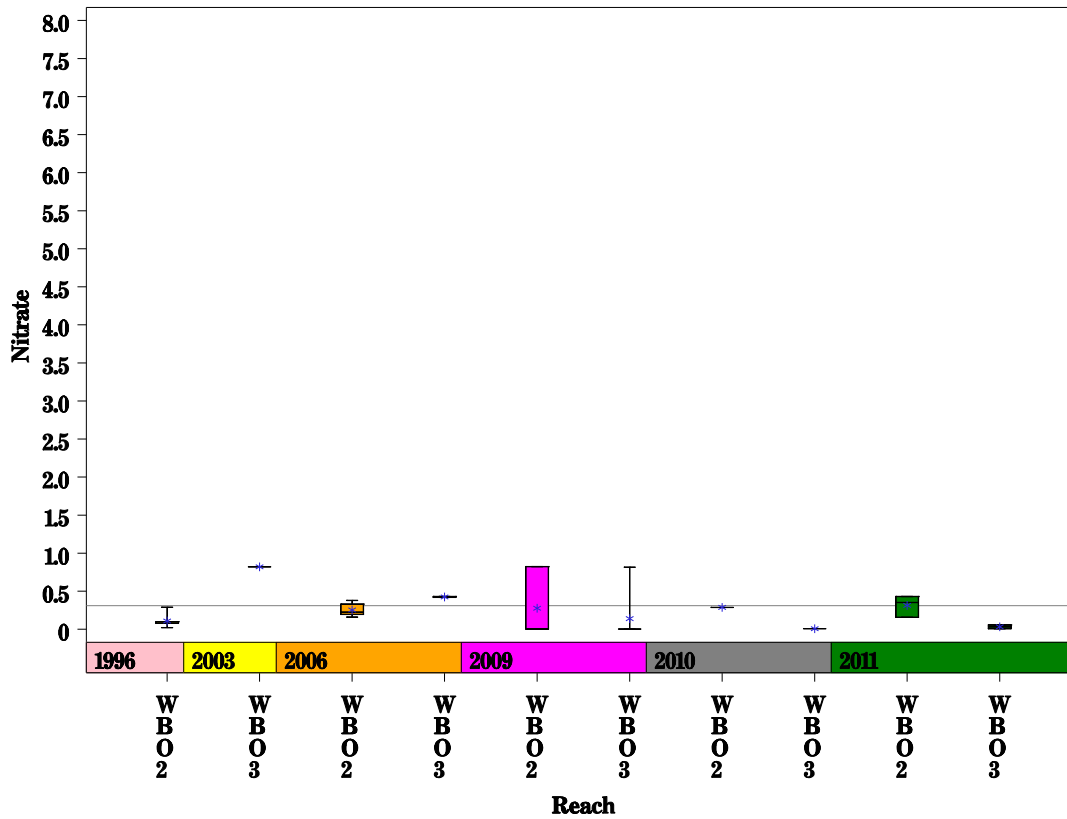
West Bouldin Creek Watershed

Data Summary Graphs – Ammonia and Nitrate/Nitrite (Downstream to Upstream by Year)

Parameter=AMMONIA AS N Unit=MG/L Watershed=West Bouldin Creek



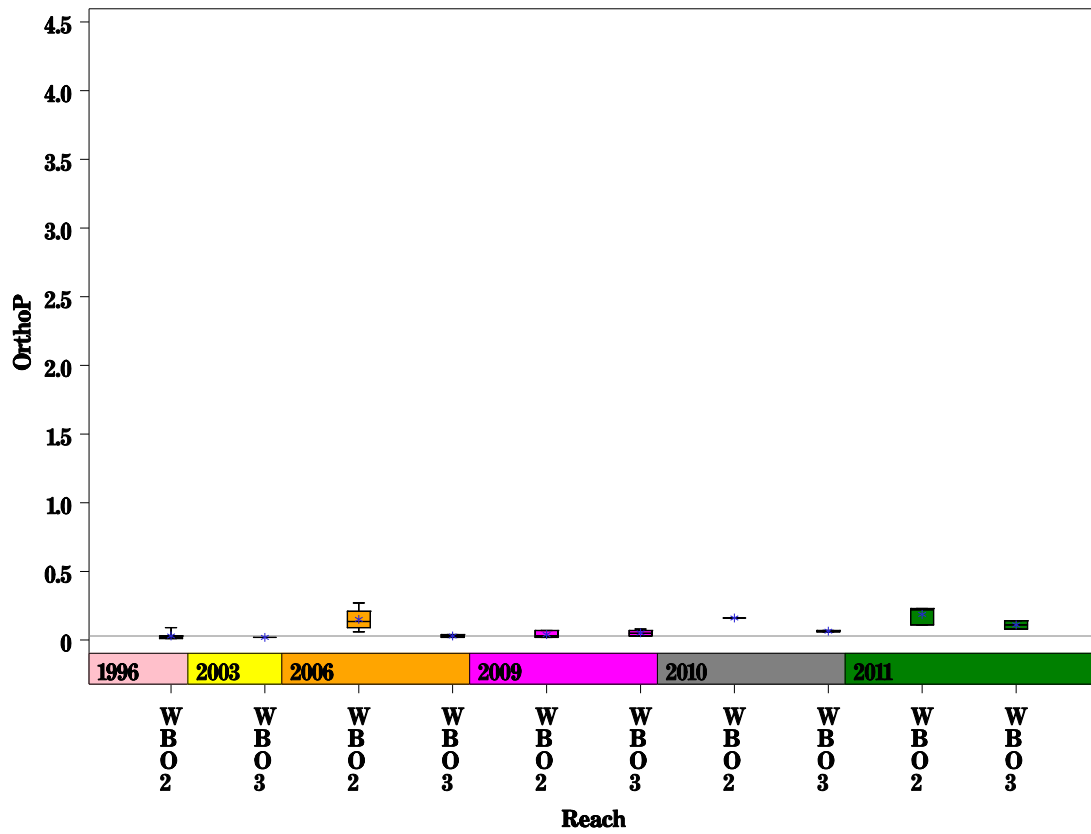
Parameter=NITRATE AS N Unit=MG/L Watershed=West Bouldin Creek



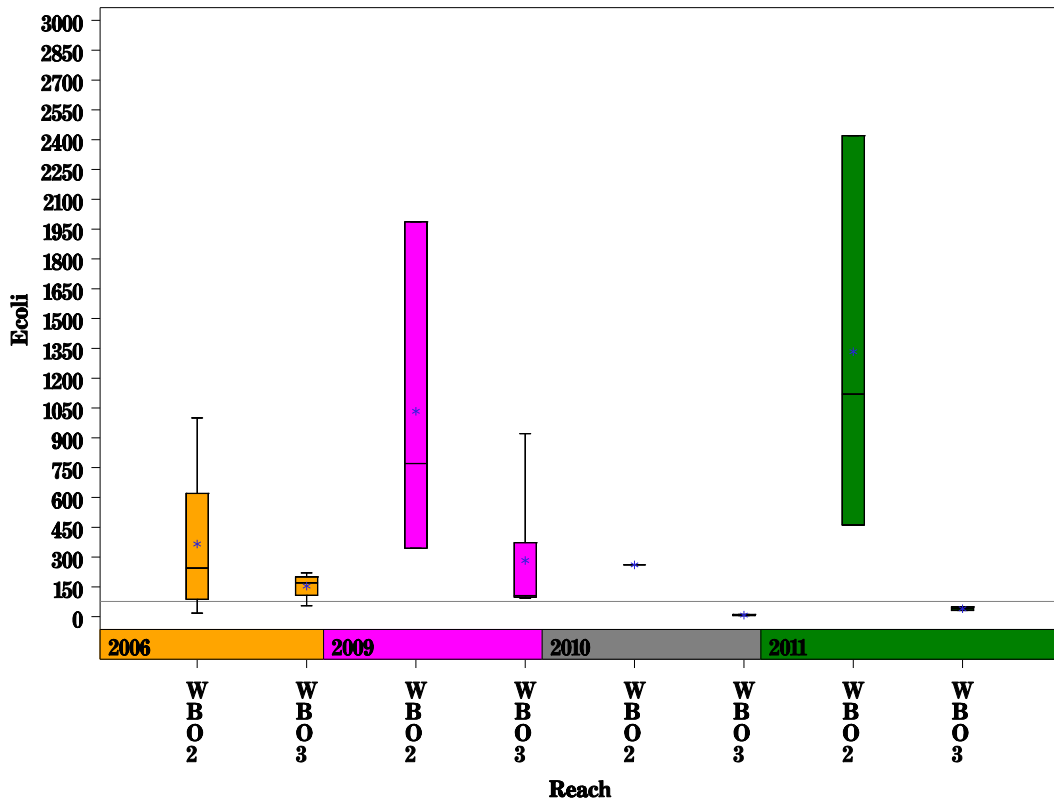
West Bouldin Creek Watershed

Data Summary Graphs – Orthophosphate and E.coli (Downstream to Upstream by Year)

Parameter = ORTHOPHOSPHORUS AS P Unit = MG/L Watershed = West Bouldin Creek



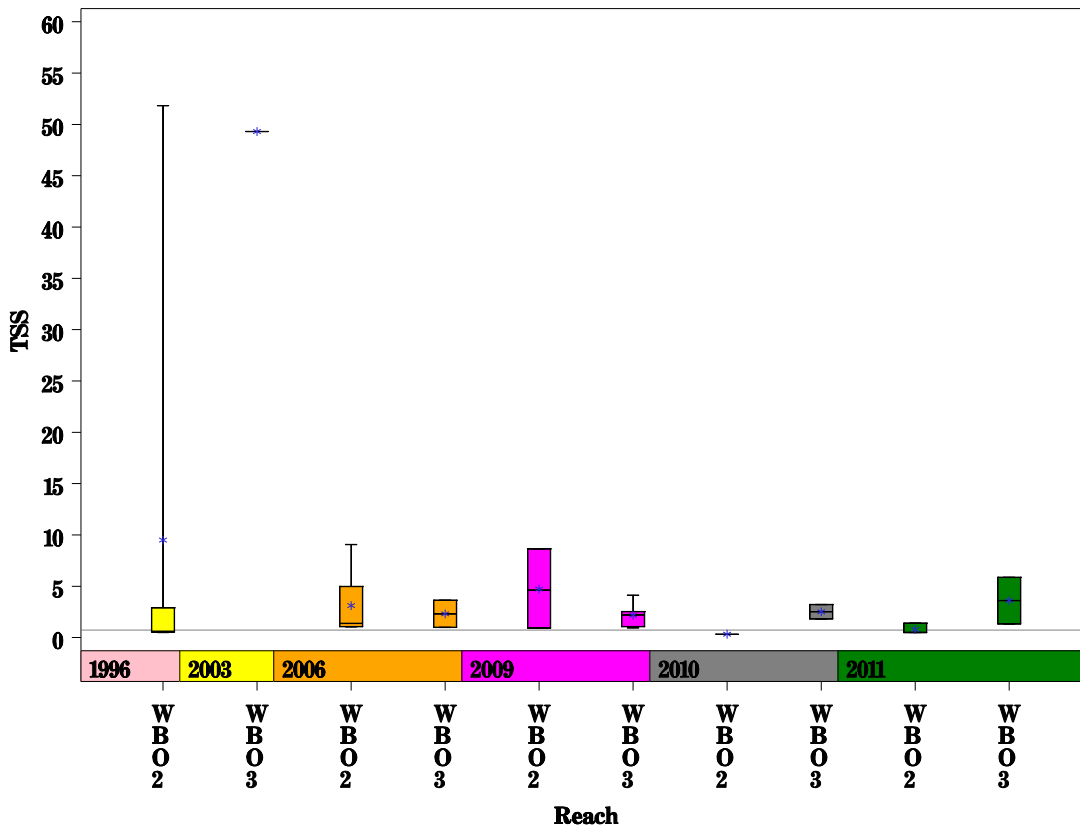
Parameter = E COLI BACTERIA Unit = MPN/100ML Watershed = West Bouldin Creek



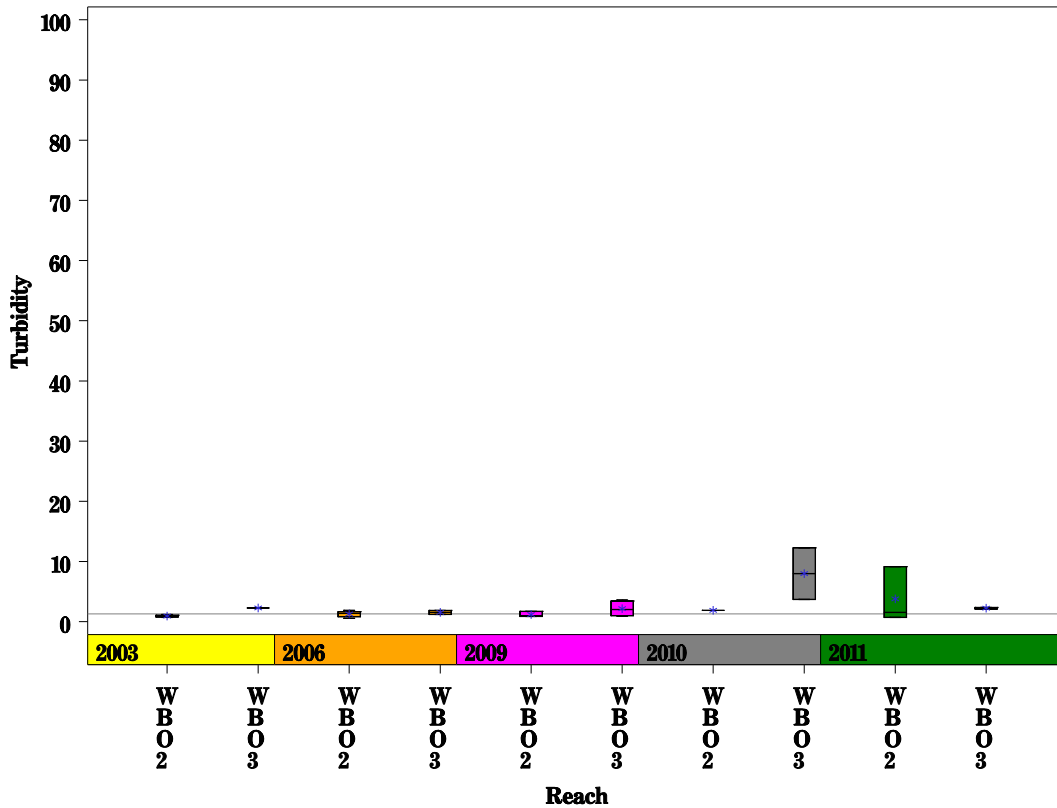
West Bouldin Creek Watershed

Data Summary Graphs – Total Suspended Solids and Turbidity (Downstream to Upstream by Year)

Parameter = TOTAL SUSPENDED SOLIDS Unit = MG/L Watershed = West Bouldin Creek

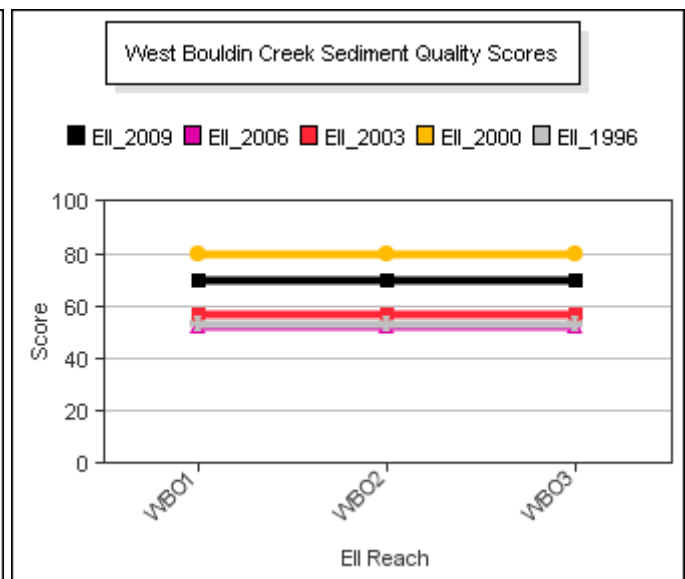
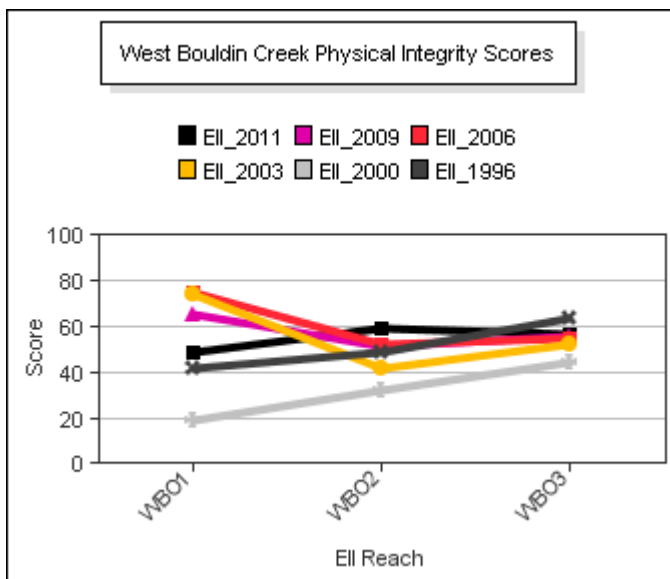
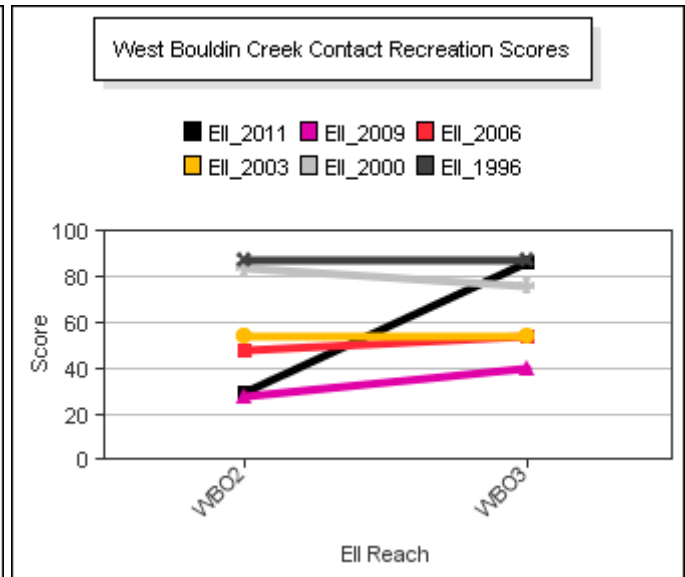
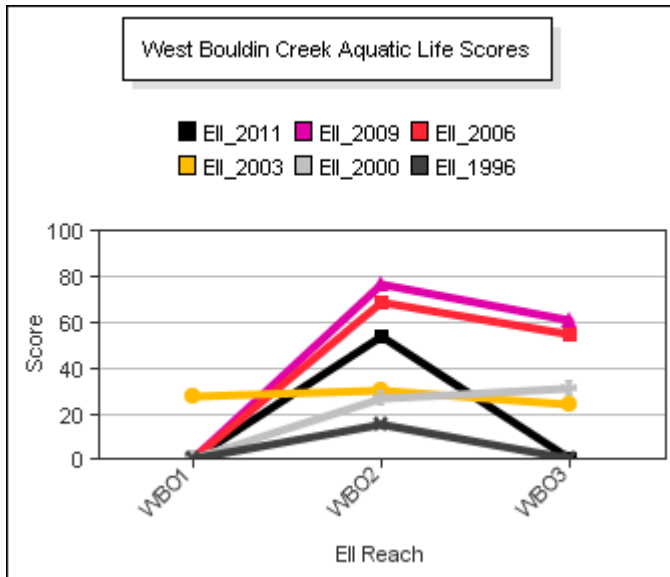
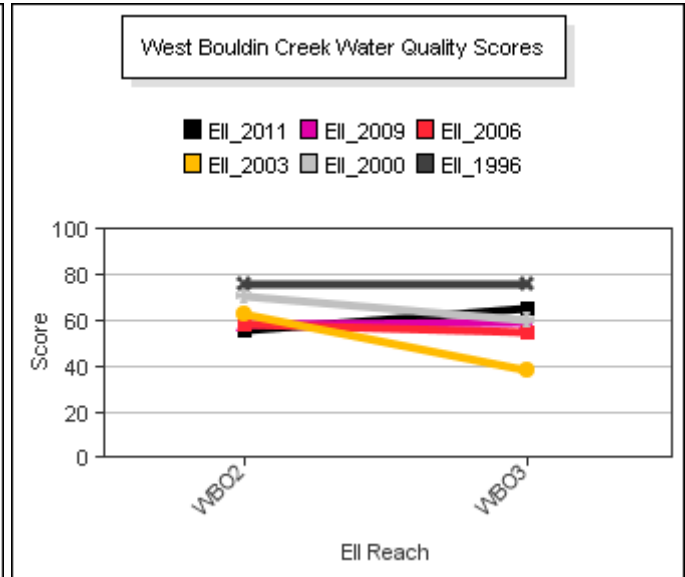
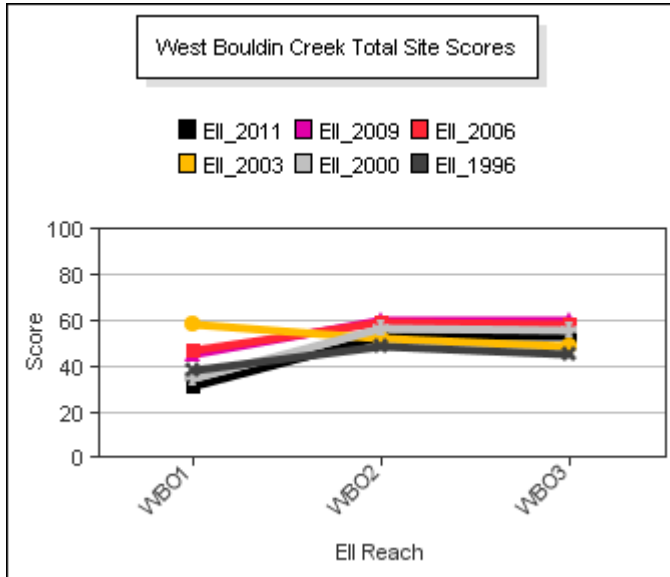


Parameter = TURBIDITY Unit = NTU Watershed = West Bouldin Creek



West Bouldin Creek Watershed

Score Summary – Reach scores for each sample year



West Bouldin Creek Watershed

Site Photographs



3856_t00-us-06_03_2009



3856_t00-ds-06_03_2009



846_t00-us-03_10_2003



846_t00-ds-03_10_2003



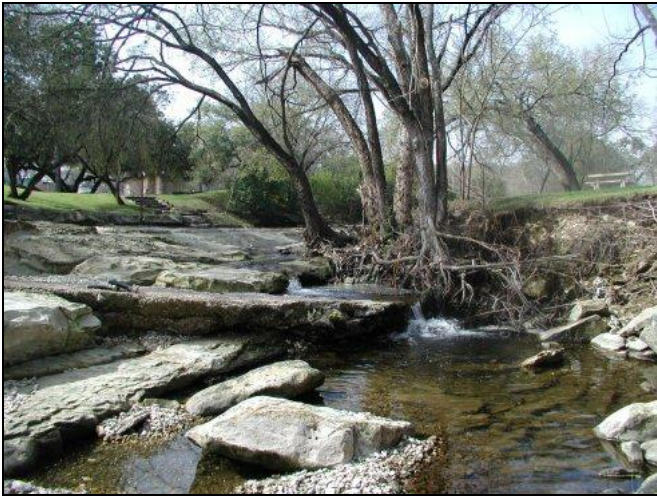
3856_t00-us1-07_05_2006



3854_t00-ds-07_11_2006

West Bouldin Creek Watershed

Site Photographs



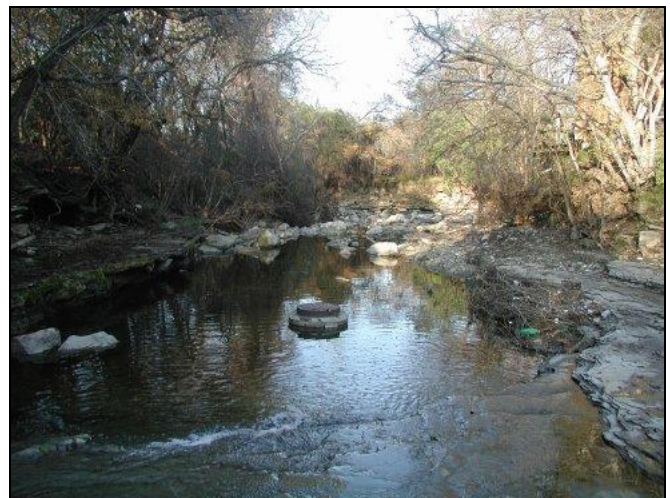
845_t00-us-03_10_2003



845_t00-ds-03_10_2003



878_t00-ur-02_12_2001



878_t00-ds-12_18_2000



2794_t00-us-06_03_2009



2794_t00-ds-07_11_2006

This page left intentionally blank