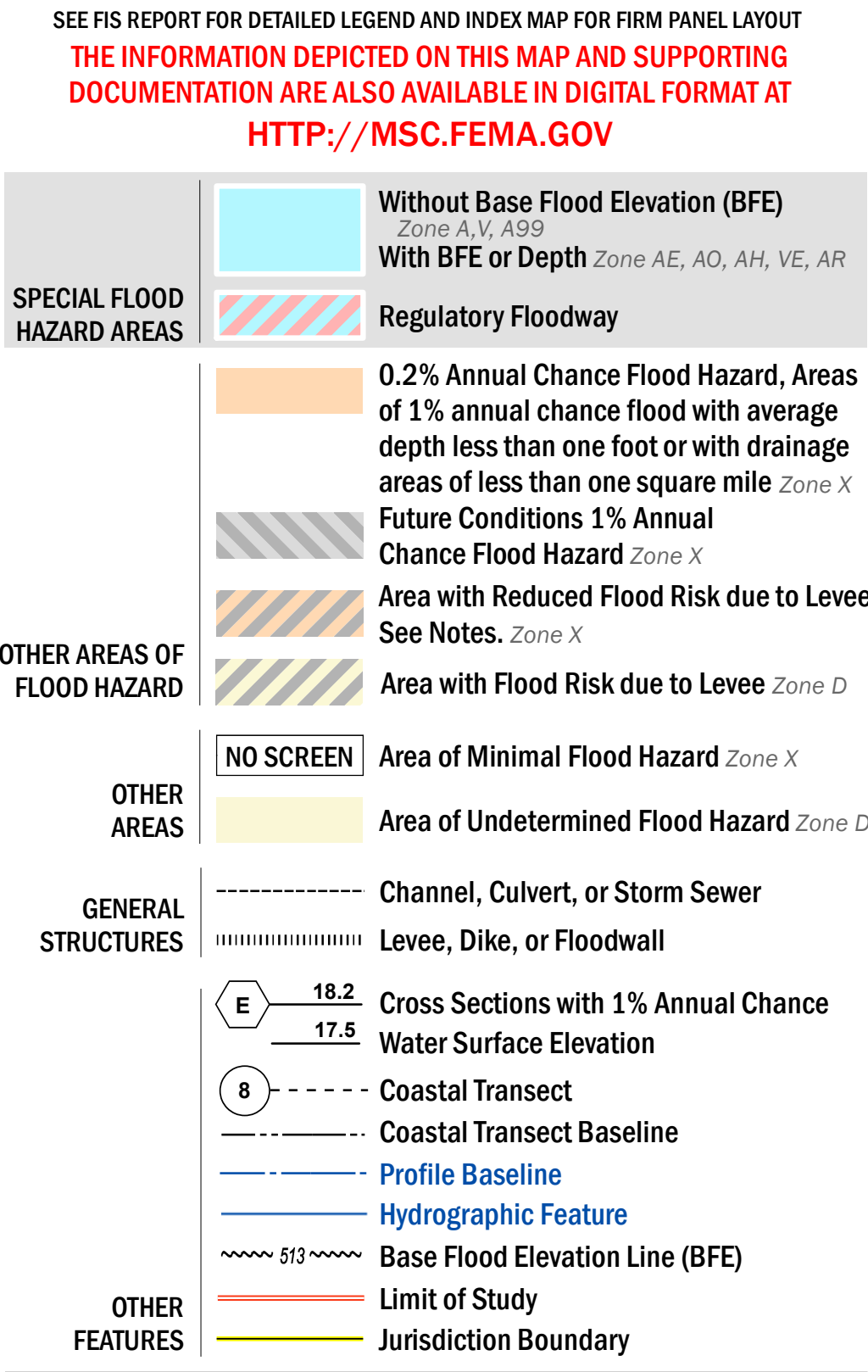


FLOOD HAZARD INFORMATION



NOTES TO USERS

For information and questions about this Flood Insurance Rate Map (FIRM), available products associated with this FIRM, including historic versions, the current map date for each FIRM panel, how to order products, or the National Flood Insurance Program (NFIP) in general, please call the FEMA Map Information eXchange at 1-877-FEMA-MAP (1-877-336-2627) or visit the FEMA Flood Map Service Center website at <http://mfc.fema.gov>. Available products may include previously issued Letters of Map Change, a Flood Insurance Study Report, and/or digital versions of this map. Many of these products can be ordered or obtained directly from the website.

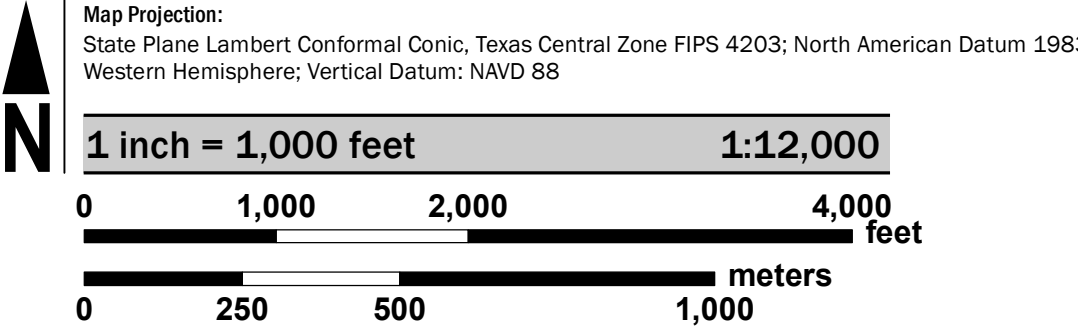
Communities annexing land on adjacent FIRM panels must obtain a current copy of the adjacent panel as well as the current FIRM Index. These may be ordered directly from the Flood Map Service Center at the number listed above.

For community and countywide map dates refer to the Flood Insurance Study Report for this jurisdiction.

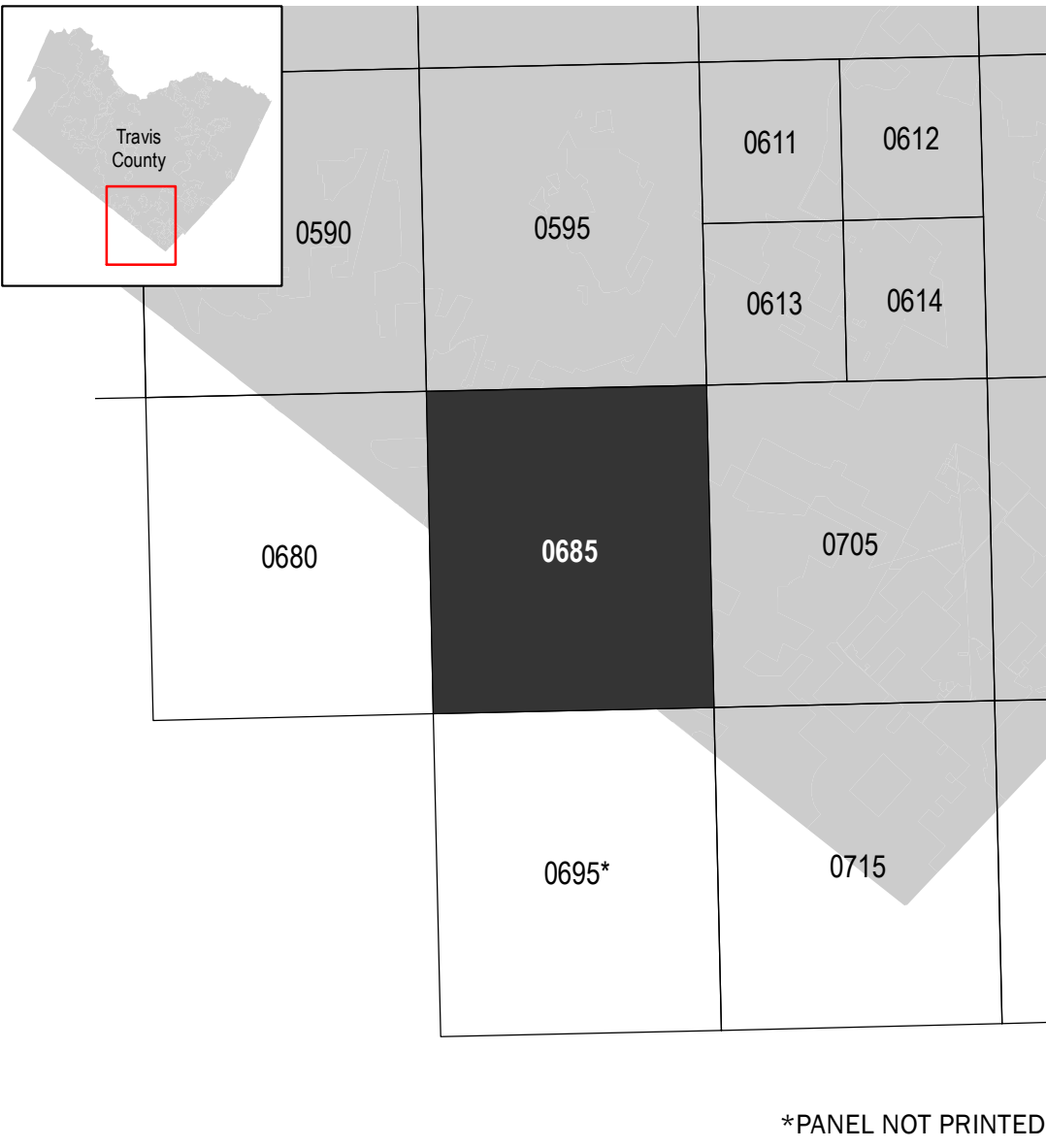
To determine if flood insurance is available in this community, contact your Insurance agent or call the National Flood Insurance Program at 1-800-638-6620.

Base map information shown on this FIRM was derived from digital data obtained from City of Austin dated 2016, NFHL dated 2014, and CAPCOG dated 2014 and 2016.

SCALE



PANEL LOCATOR



**National Flood Insurance Program**

**NATIONAL FLOOD INSURANCE PROGRAM**

**FLOOD INSURANCE RATE MAP**

**TRAVIS COUNTY, TEXAS**  
and Incorporated Areas

PANEL 685 OF 730

Panel Contains:

COMMUNITY	NUMBER	PANEL	SUFFIX
AUSTIN, CITY OF	480624	0685	J
CREEDMOOR, CITY OF	481697	0685	J
TRAVIS COUNTY	481026	0685	J

**PRELIMINARY**

**4/7/2017**

VERSION NUMBER  
2.3.3.3

MAP NUMBER  
48453C0685J

MAP REVISED

\*PANEL NOT PRINTED