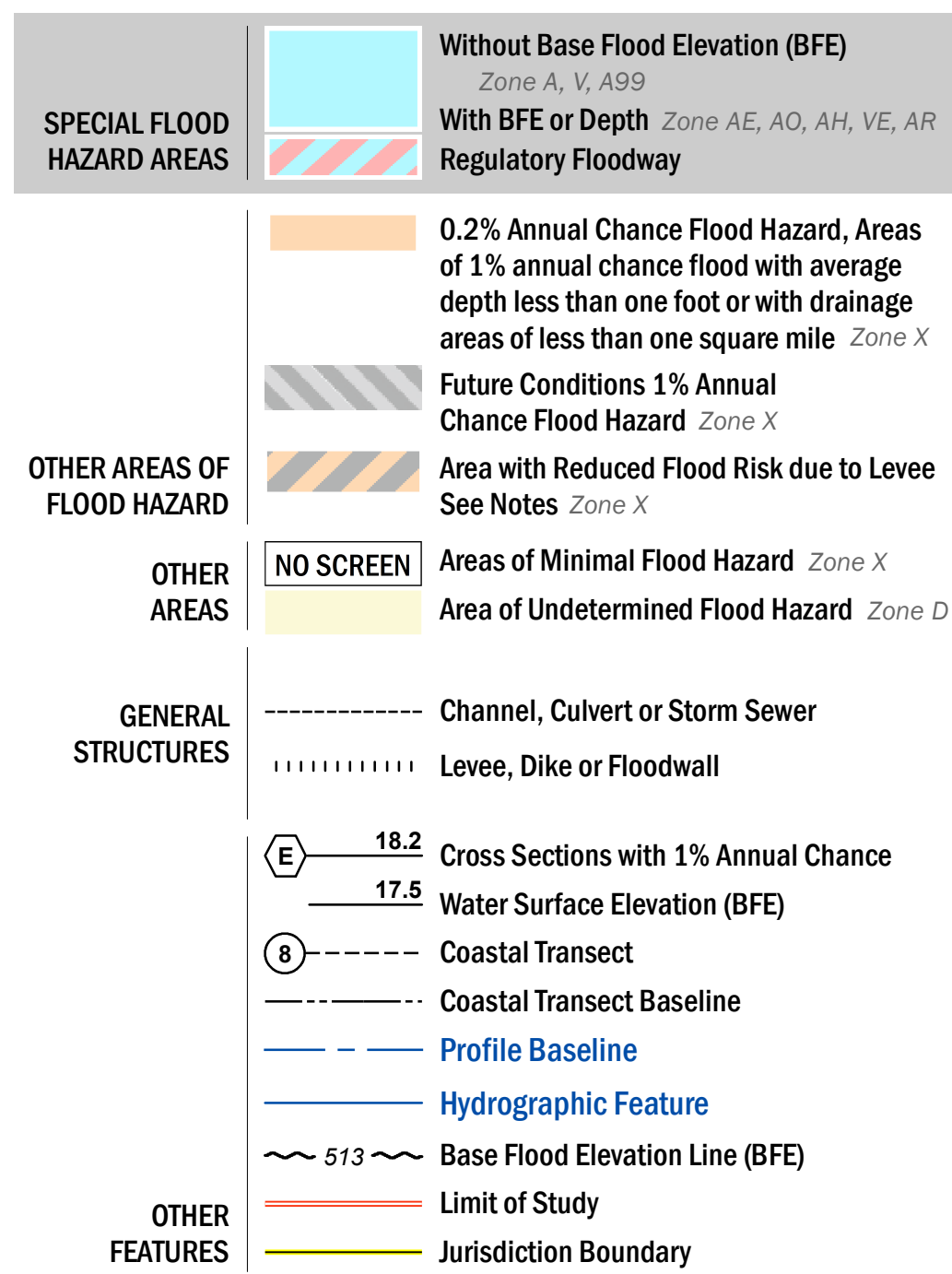


FLOOD HAZARD INFORMATION

SEE FIS REPORT FOR DETAILED LEGEND AND INDEX MAP FOR FIRM PANEL LAYOUT
THE INFORMATION DEPICTED ON THIS MAP AND SUPPORTING DOCUMENTATION ARE ALSO AVAILABLE IN DIGITAL FORMAT AT [HTTP://MSC.FEMA.GOV](http://MSC.FEMA.GOV)



NOTES TO USERS

For information and questions about this Flood Insurance Rate Map (FIRM), available products associated with this FIRM, including historic versions, the current map date for each FIRM panel, how to order products, or the National Flood Insurance Program (NFIP) in general, please call the FEMA Map Information eXchange at 1-877-FEMA-MAP (1-877-336-2627) or visit the FEMA Flood Map Service Center website at <http://msc.fema.gov>. Available products may include previously issued Letters of Map Change, a Flood Insurance Study Report, and/or digital versions of this map. Many of these products can be ordered or obtained directly from the website.

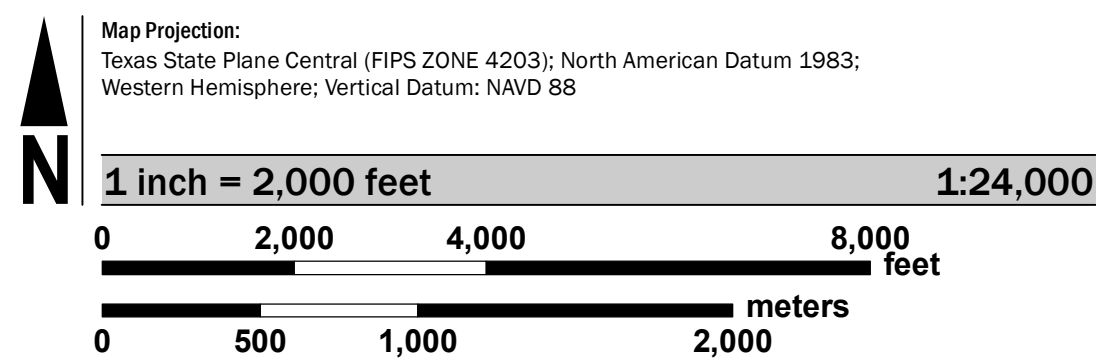
Communities annexing land on adjacent FIRM panels must obtain a current copy of the adjacent panel as well as the current FIRM Index. These may be ordered directly from the Map Service Center at the number listed above.

For community and countywide map dates refer to the Flood Insurance Study report for this jurisdiction.

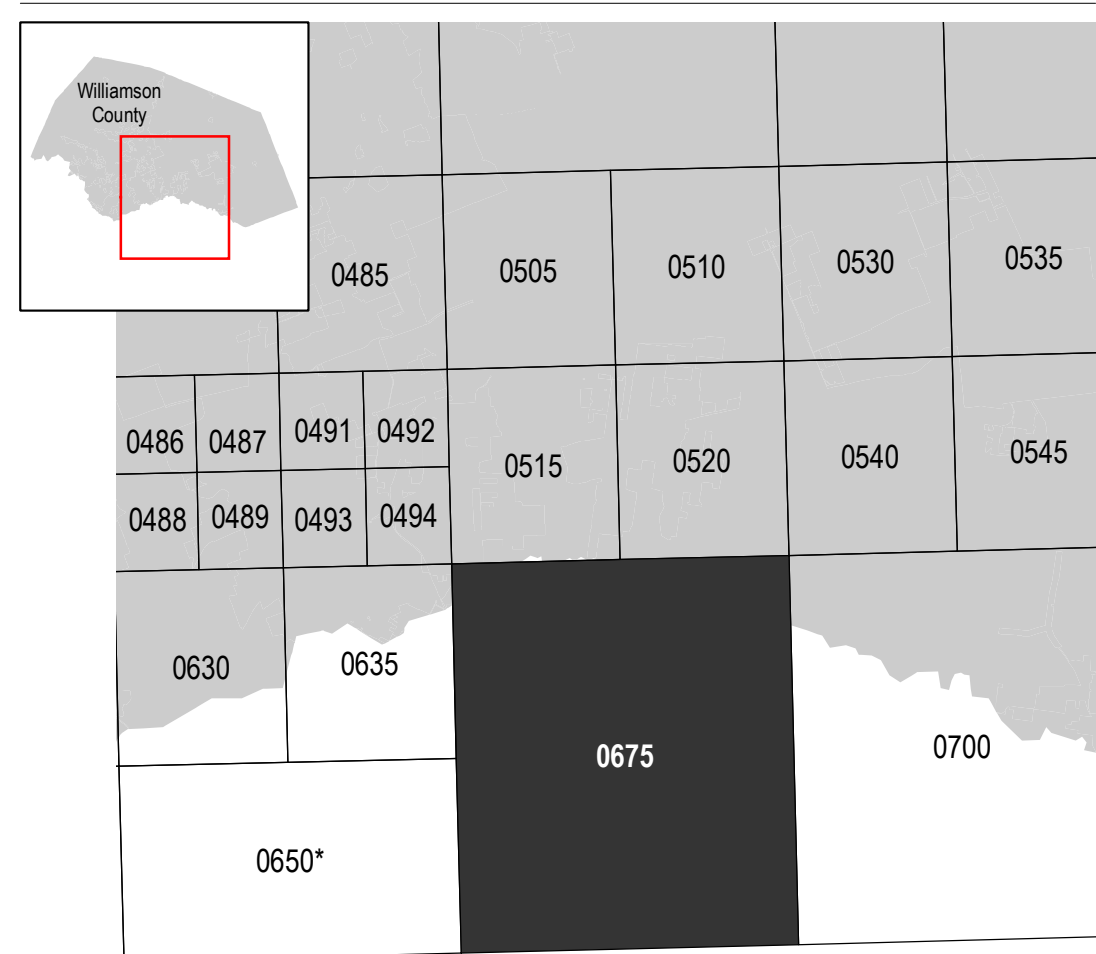
To determine if flood insurance is available in this community, contact your Insurance agent or call the National Flood Insurance Program at 1-800-638-6620.

Base map information shown on this FIRM was derived from digital data obtained from the Williamson County Geographic Information Systems (GIS) Department dated 2016.

SCALE



PANEL LOCATOR



*PANEL NOT PRINTED

NATIONAL FLOOD INSURANCE PROGRAM
 FLOOD INSURANCE RATE MAP

WILLIAMSON COUNTY, TEXAS
 and Incorporated Areas

PANEL 675 OF 750

Panel Contains:

COMMUNITY	NUMBER	PANEL	SUFFIX
PFLUGERVILLE, CITY OF	481028	0675	F
ROUND ROCK, CITY OF	481048	0675	F
WILLIAMSON COUNTY	481079	0675	F

PRELIMINARY
1/30/2017

VERSION NUMBER
 2.3.3.3

MAP NUMBER
 48491C0675F

MAP REVISED