

Floodplain Study: Bull and West Bull Creeks

Bull Creek, including West Bull Creek, is a suburban watershed with a drainage area of approximately 31 square miles and 49 miles of streams to be studied. The watershed is bordered roughly by the Colorado River on the south, R.R. 620 on the west, U.S. 183 on the north and the Shoal Creek Watershed to the east. The creek discharges into the Colorado River.

Reason for Study

The current flood insurance rate maps for Bull and West Bull Creeks are based on a study completed in 1977. The maps were updated in 2008 with the most recent topographic data. However, the modeling also needs to be updated. Significant development activity has occurred in portions of the Bull Creek watershed since the original modeling for the 1977 study. This study will update and extend the mapping based on new data.

Contact

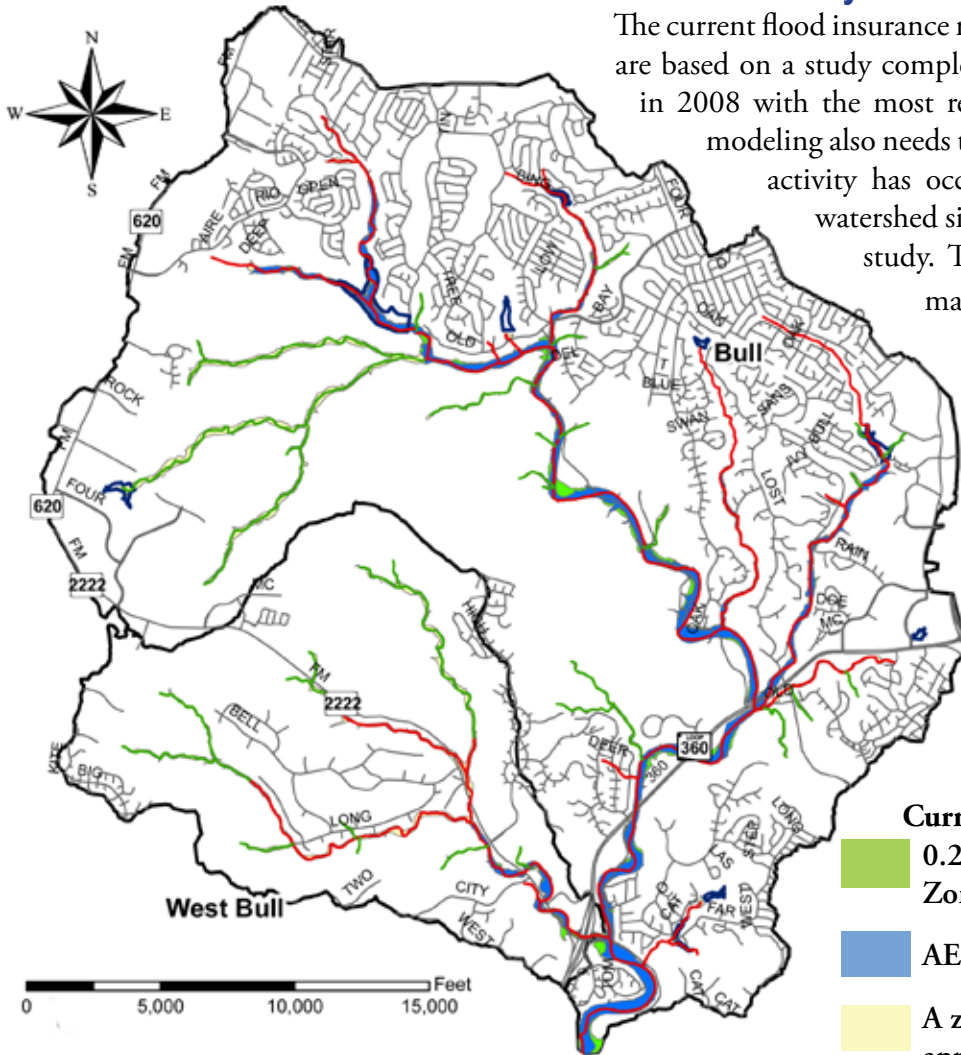
City of Austin Floodplain
 Information Hotline
 512-974-2843
floodinfo@ci.austin.tx.us

Map Legend

- Streams for detailed study (AE zone*)
- Streams for approximate study (A zone*)

Current Floodplains

- 0.2 % Annual Chance Flood Hazard Zone (500-year floodplain)
- AE zone* (100-year floodplain)
- A zone* (100-year floodplain, approximate study)



*For more information on FEMA flood zones, visit www.fema.gov.

Creek	Square Miles of Basin Area	Miles of Stream for Approximate Study	Miles of Stream for Detailed Study
Bull Creek	24.41	12.18	24.04
West Bull Creek	6.95	5.8	7.26
Total	31.36	17.98	31.30

www.cityofaustin.org/watershed/floodplain_studies.htm